



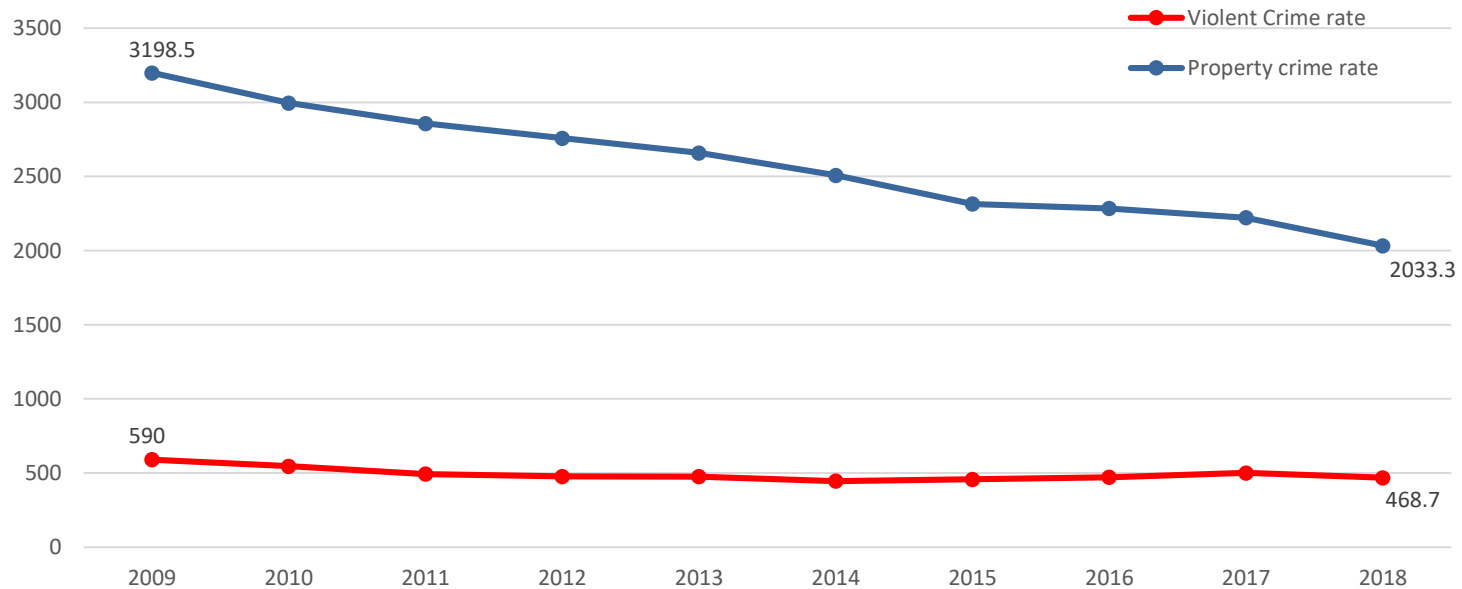
Metro Region Juvenile Services Long Term Trends: Counties of Montgomery and Prince George's

DJS Office of Research and Evaluation, February 2020

Statewide Crime Rates Show a Marked Decline

- Since 2009, per capita property crime rates declined 36.4% across Maryland.
- Per capita violent crime rates fell 20.6% during this period.
- Data are drawn from the FBI's Uniform Crime Reports, which document all crimes reported to law enforcement agencies. Data are not based on offender or age, and thus are not measures of juvenile crimes.

Per Capita Violent and Property Crime Rates for Maryland, 2009-2018

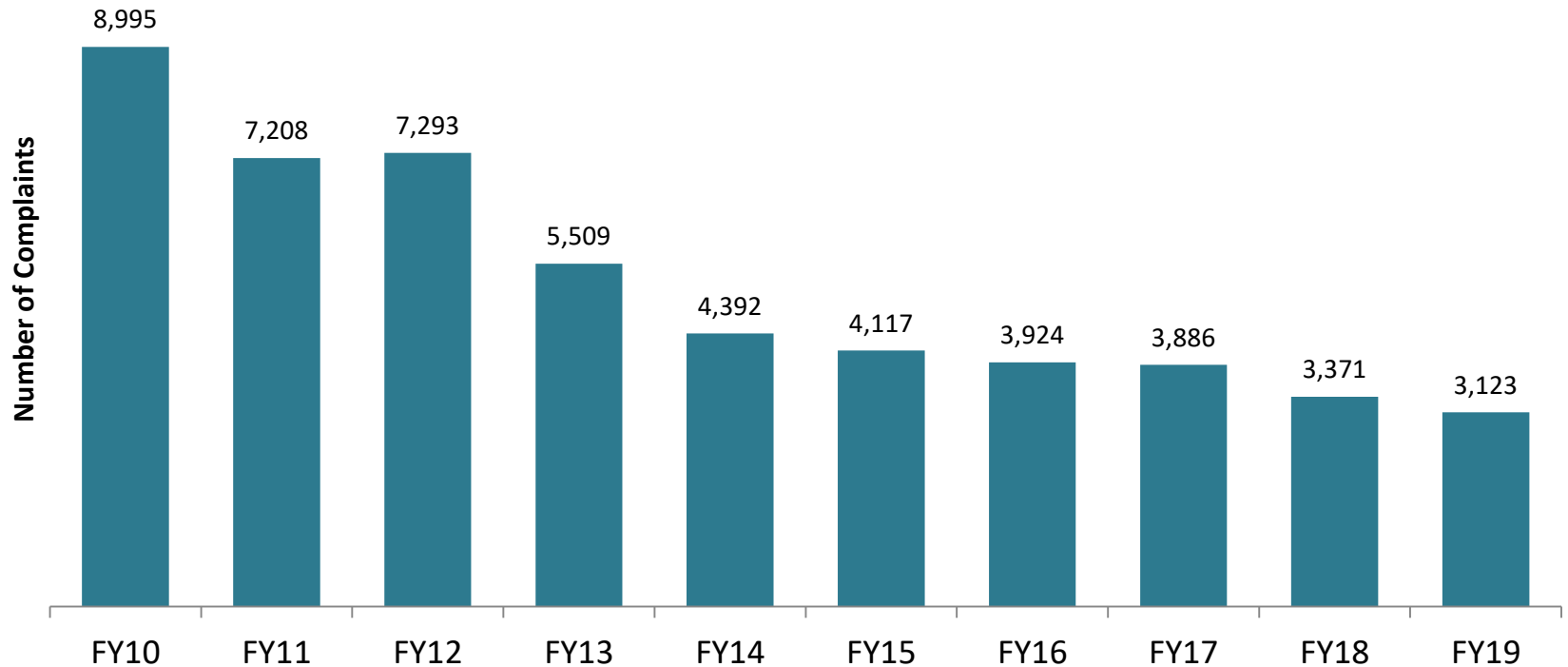


Prepared by: Office of Research and Evaluation
Data Source: FBI Uniform Crime Reports (UCR).

Note: Violent crime includes the following offense categories: Murder and non-negligent manslaughter, rape, robbery, and aggravated assault. Property crime includes burglary, larceny-theft, and motor vehicle theft.

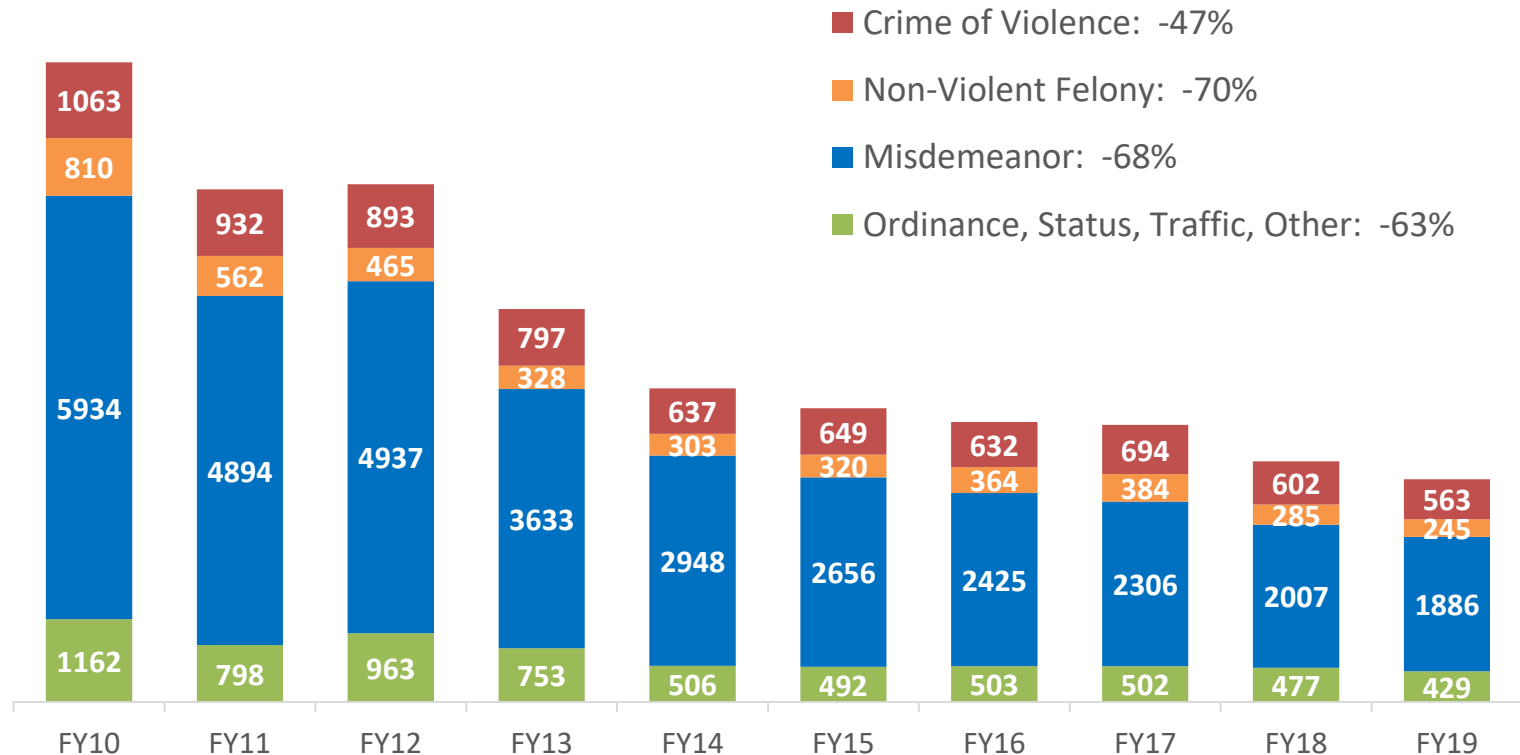
Metro Region Juvenile Complaints Have Declined Significantly

- Metro Region complaints referred to DJS Intake declined 65.3% in 10 years.
- Statewide complaints declined 53.5% over the same period.



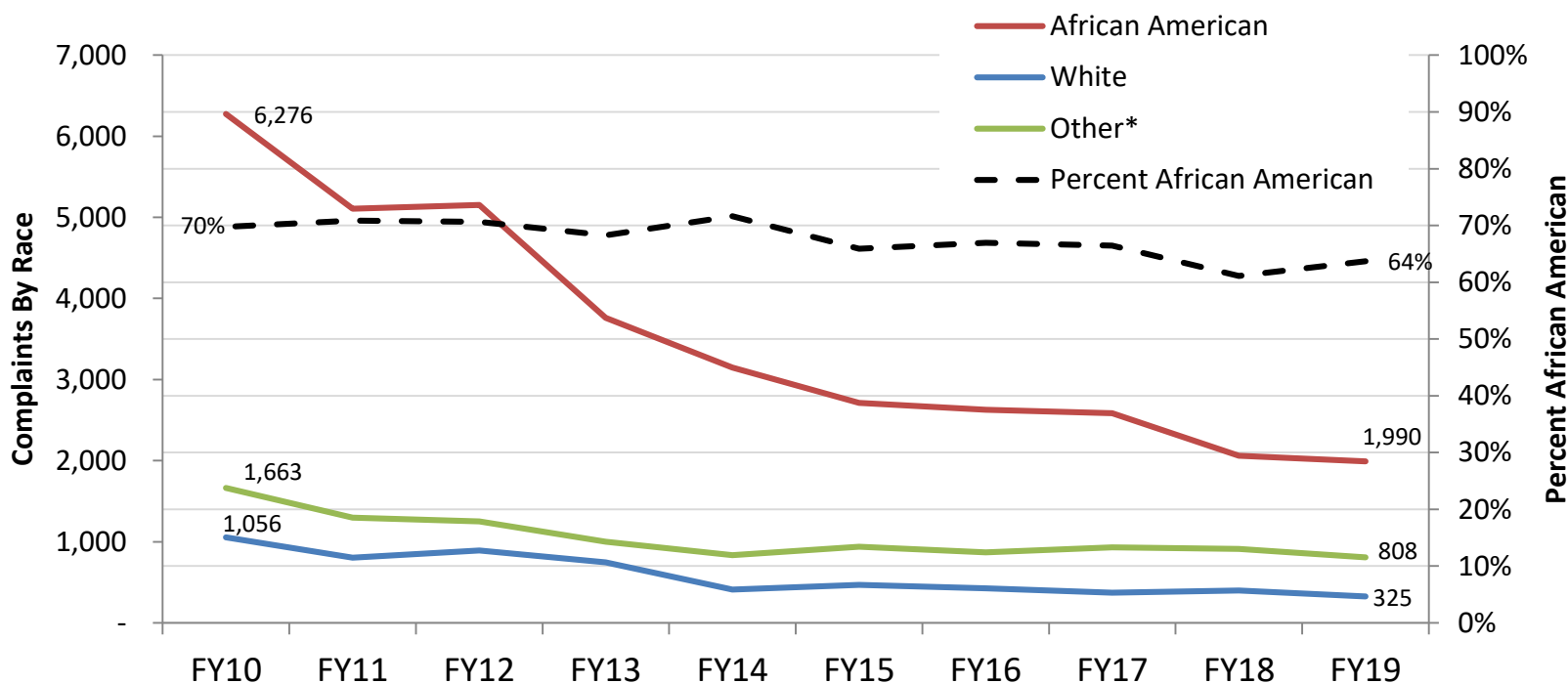
Metro Region Juvenile Complaints Have Declined In All Categories

- Metro Region complaints for crimes of violence declined 47% in 10 years.
- Misdemeanors decreased by 68%, and non-violent felonies decreased by 70% over 10 years.



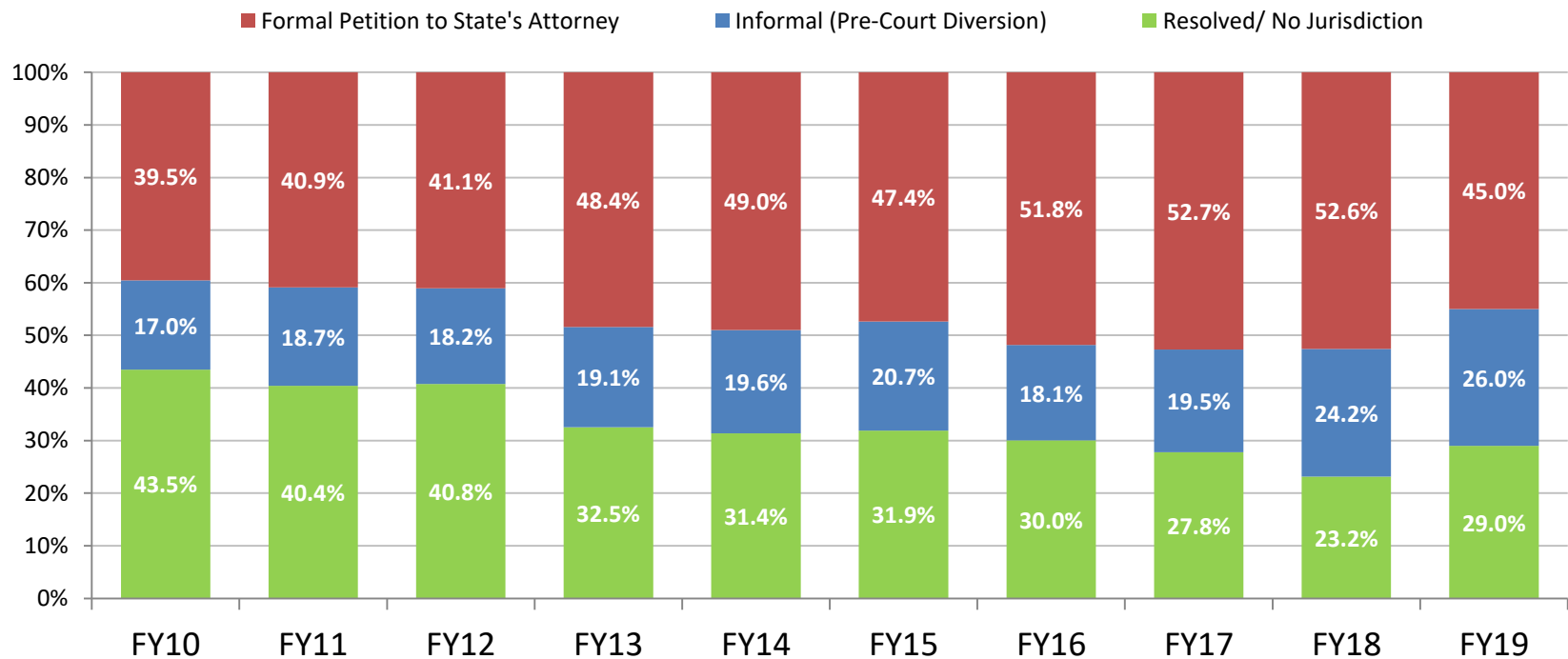
Juvenile Complaints in Metro Region Have Declined for All Races/Ethnicities

- Complaints for Metro Region African American youth declined 68.3% and declined 69.2% for white youth.
- African American youth comprised 64% of complaints in FY19, down 6 percentage points from FY10.
- African American youth comprised 37.1% of the population of youth ages 11-17 in 2018.



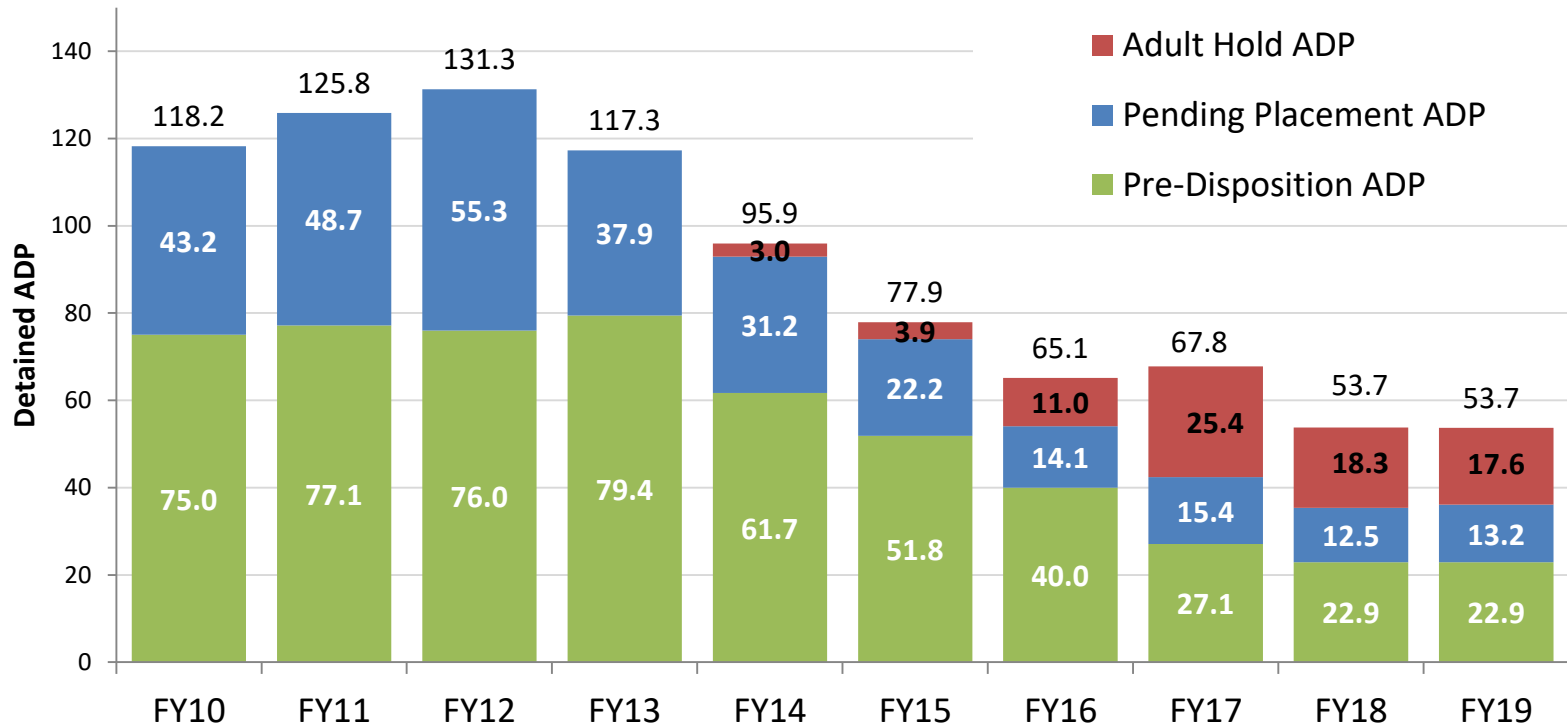
Percent of Cases Referred to Juvenile Court by Metro Region has Decreased

- 45.0% of Metro Region complaints were referred to court by DJS Intake in FY19, 5.5 percentage points more than in FY10. Statewide 38.9% were referred to court.
- 26.0% of Metro Region complaints were diverted to an informal DJS pre-court case. Statewide 15.9% were diverted.



Metro Region Detention Population Has Declined Significantly

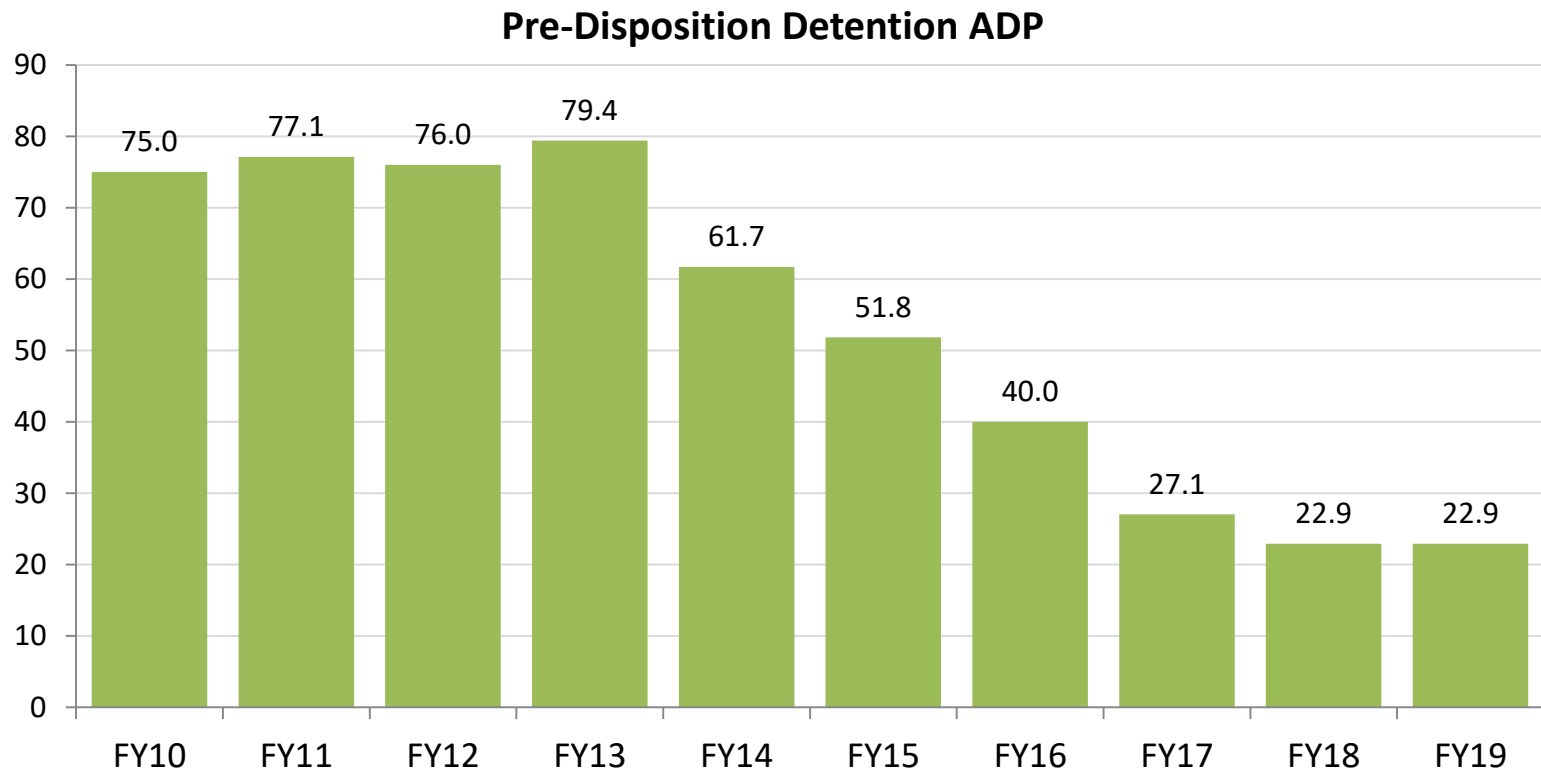
- Metro Region daily population in DJS detention declined 54.6% in 10 years, to 53.7 in FY19. The statewide detention population declined 37.7% over the same period.
- Cases detained for the Adult Court made up 17.6% of the DJS-detained population in Metro Region in FY19.



Metro Region Youth Population in Detention

Pre-Disposition Has Declined Significantly

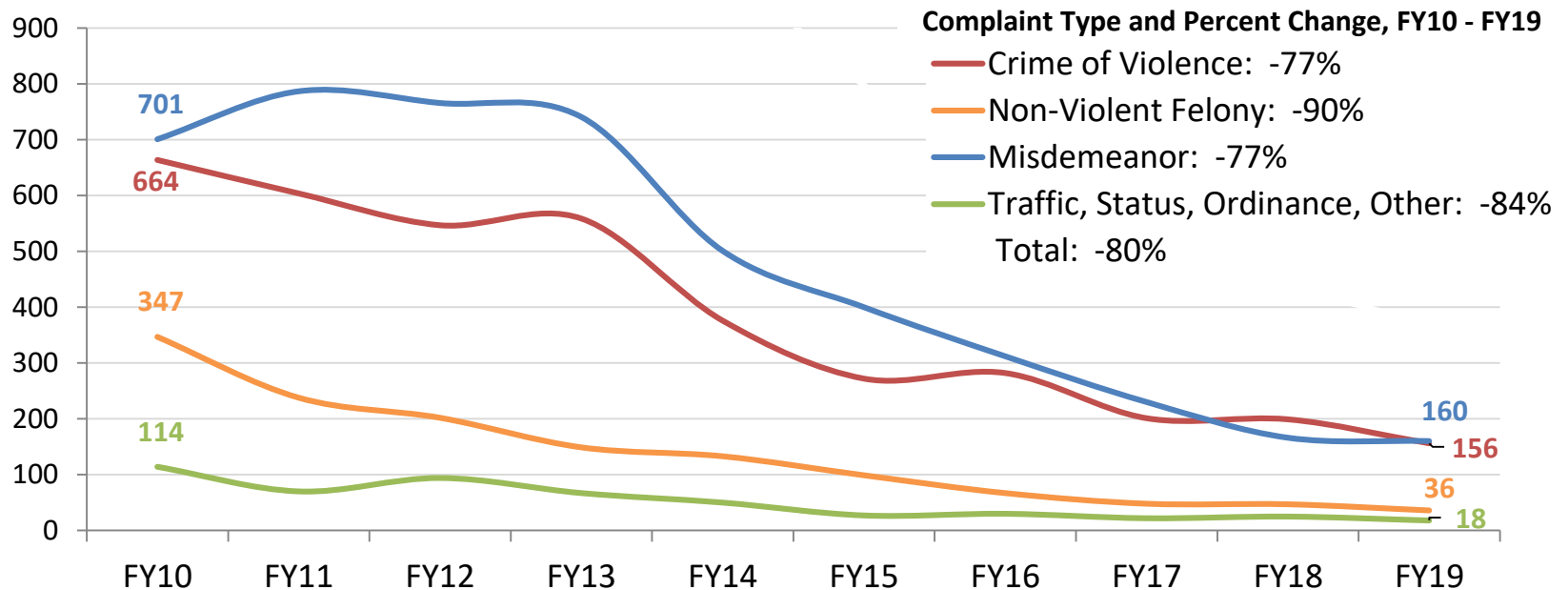
- The Metro Region juvenile pre-dispositional detained population declined 69.5% in 10 years to an average of 22.9 youth per day in FY19.



Metro Region Pre-Disposition Detention Admissions* Have Decreased for All Complaint Types

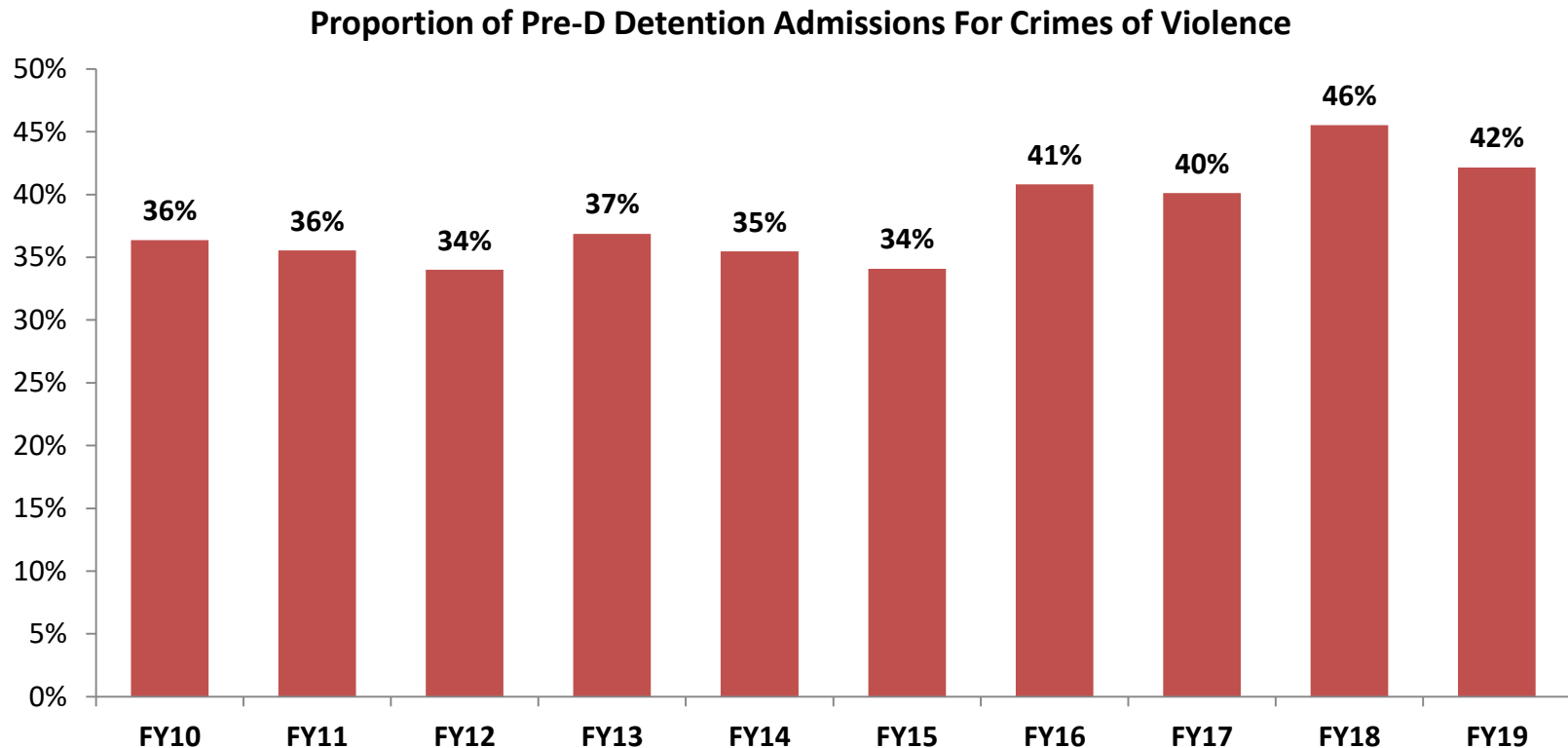
- Youth detained pending disposition for misdemeanors have decreased 77% over 10 years.
- Youth detained pending disposition for crimes of violence have also decreased 77% over 10 years.

Pre-D Detention Admissions by Complaint Type



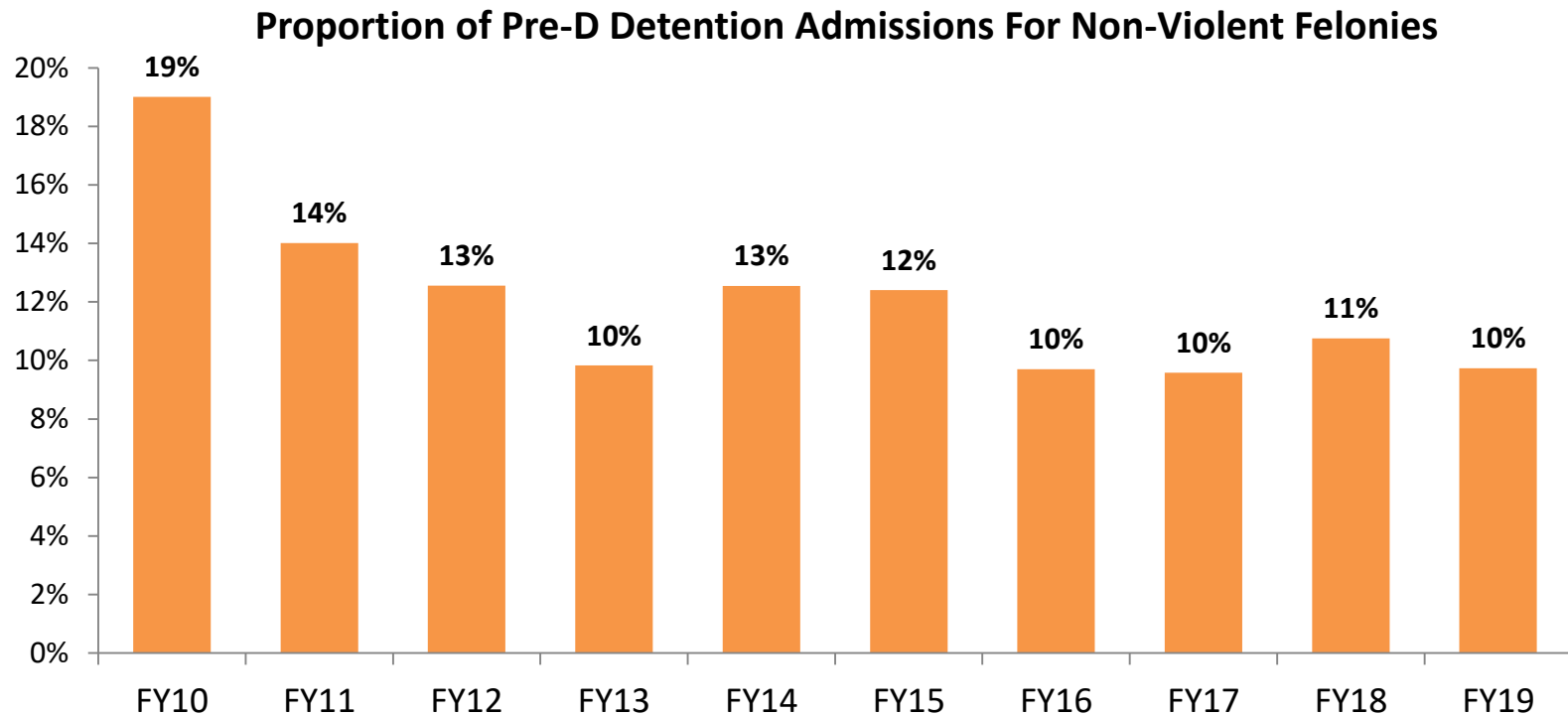
Crimes of Violence Make Up Slightly More of Detention Admissions*

- The proportion of youth detained pre-disposition for Crimes of Violence complaints has increased 6 percentage points over 10 years.



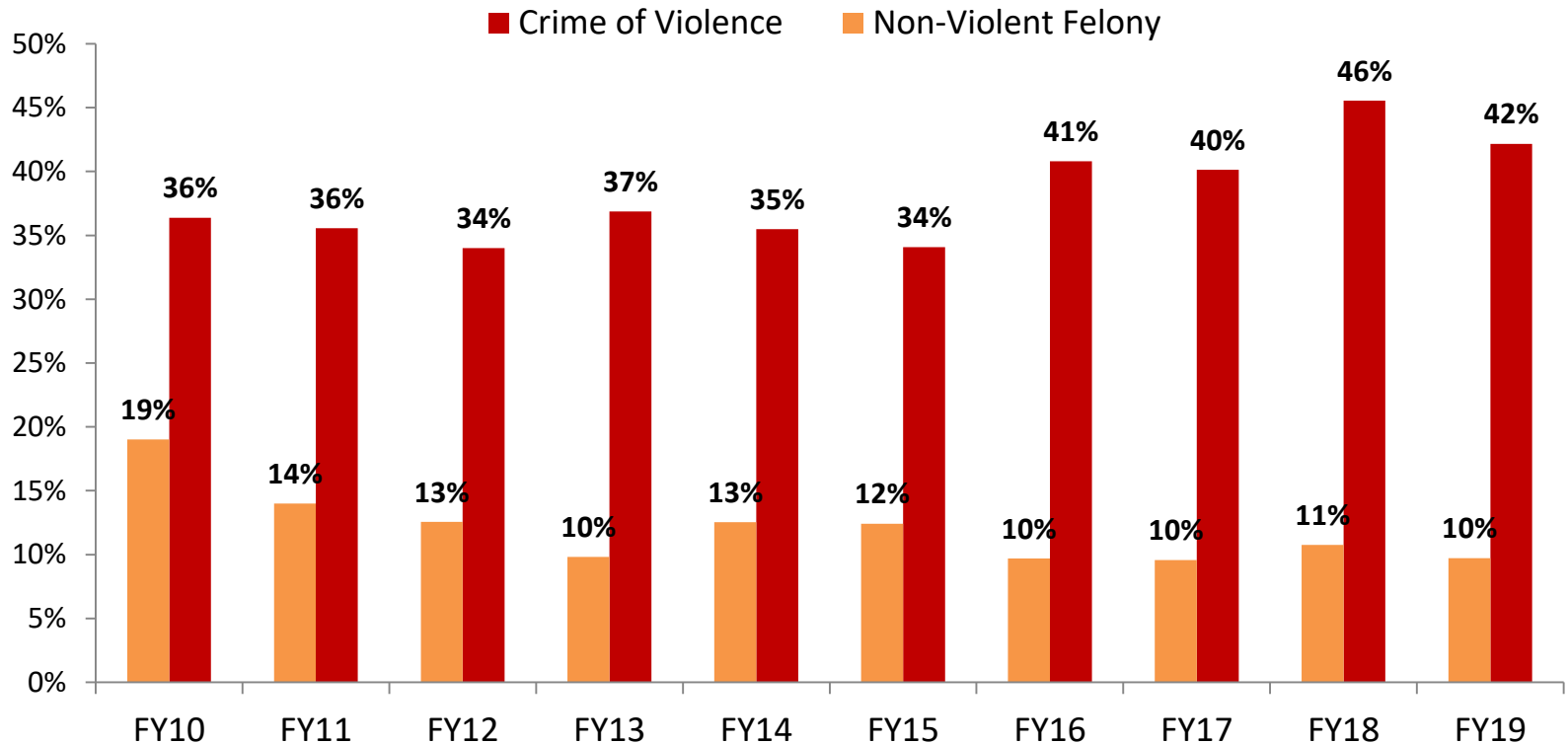
Non-Violent Felonies Make Up Fewer of Pre-Disposition Detention Admissions*

- The proportion of pre-disposition detentions that were for Non-Violent Felony complaints has decreased 9 percentage points over 10 years.



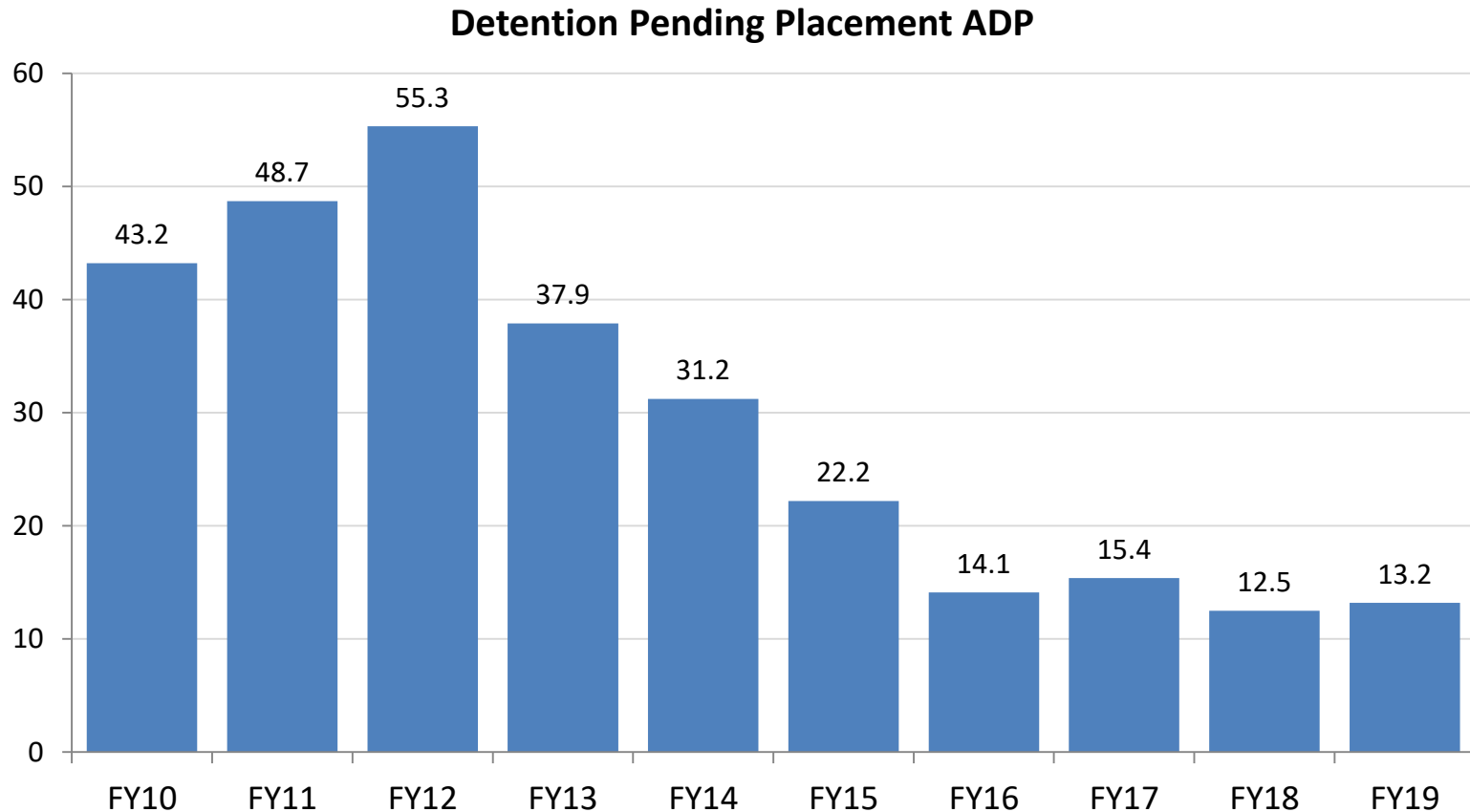
Metro Region Pre-D Detention Population*

- In the population of youth detained pre-disposition, there are now more youth with Crimes of Violence offenses relative to Non-Violent Felonies. 10 years ago, there was only a 17-point difference between the two numbers, but in FY19 the gap widened to 32 points.



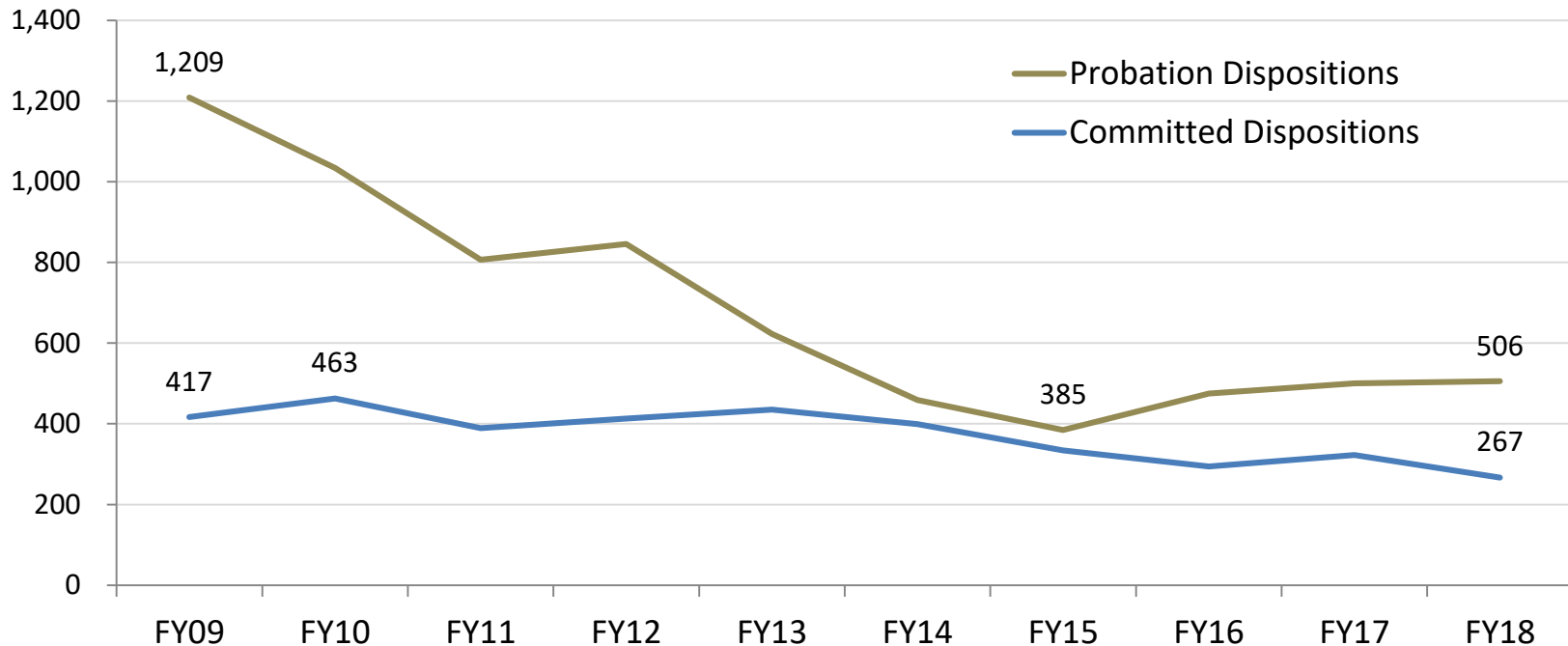
Metro Region Youth In Detention Pending a Committed Placement Has Declined Dramatically

- Juvenile detention pending placement average daily population has declined 69.4% since FY10 to 13.2 youth in FY19.



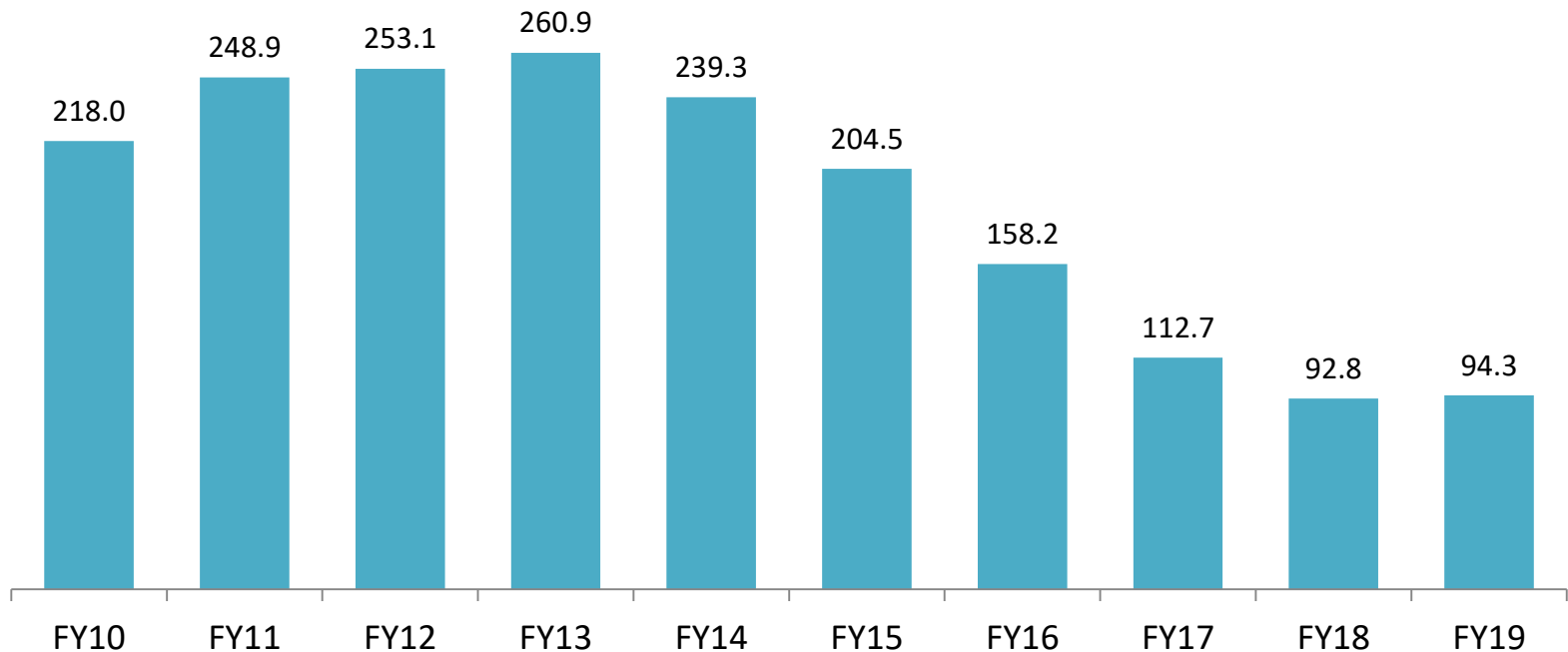
Juvenile Probation and Commitment Orders Have Declined

- Metro Region Juvenile probation orders declined 58.1% in 10 years. Statewide probation orders declined 57.1% over the same period.
- Metro Region juvenile commitments declined 36.0% in 10 years. Statewide commitments declined 46.7% over the same period.



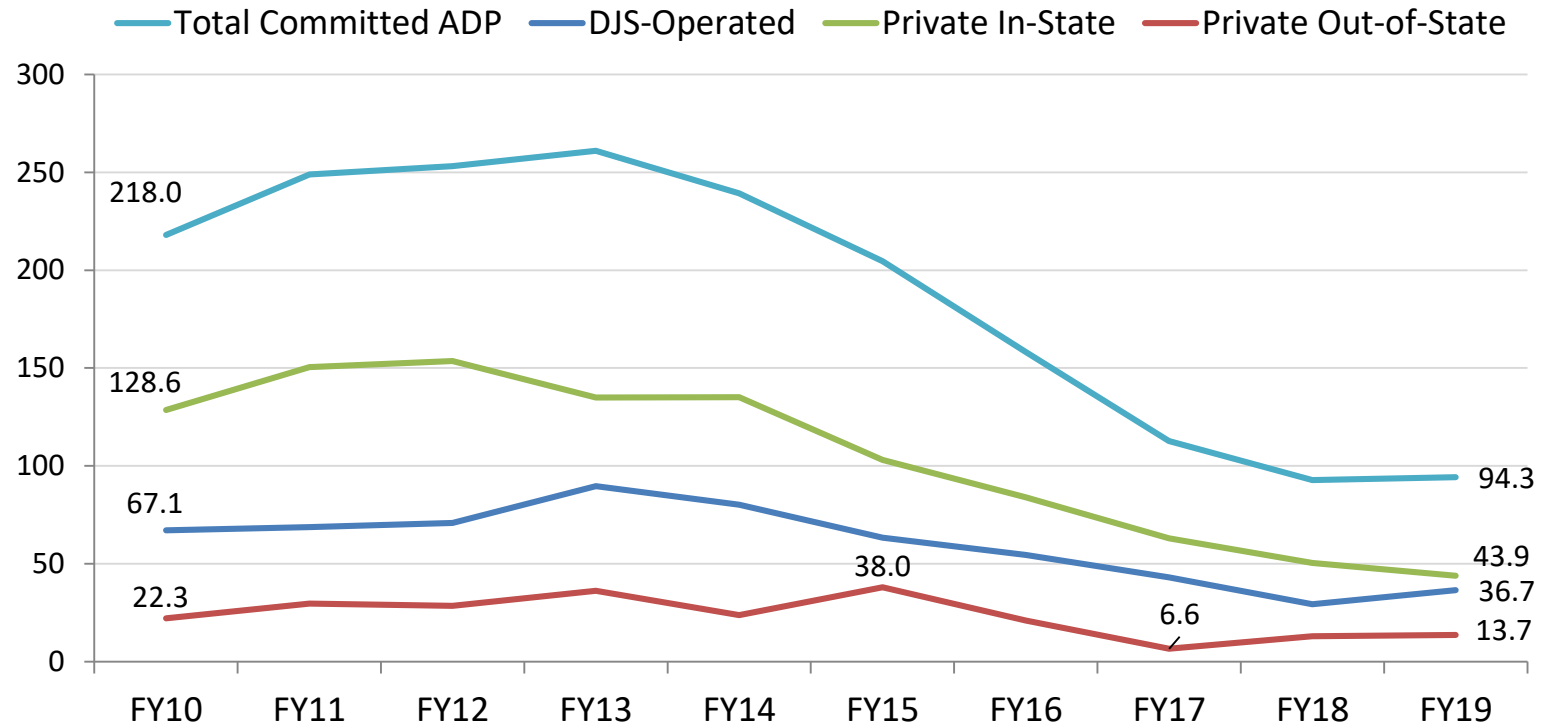
Average Committed Out-of-Home Population Has Declined Significantly in the Metro Region

- The average daily population of Metro Region youth committed by the juvenile court to out-of-home placement declined 56.7% over 10 years, from 218.0 in FY10 to 94.3 in FY19.
- Statewide average committed population declined 57.4% over the same period.



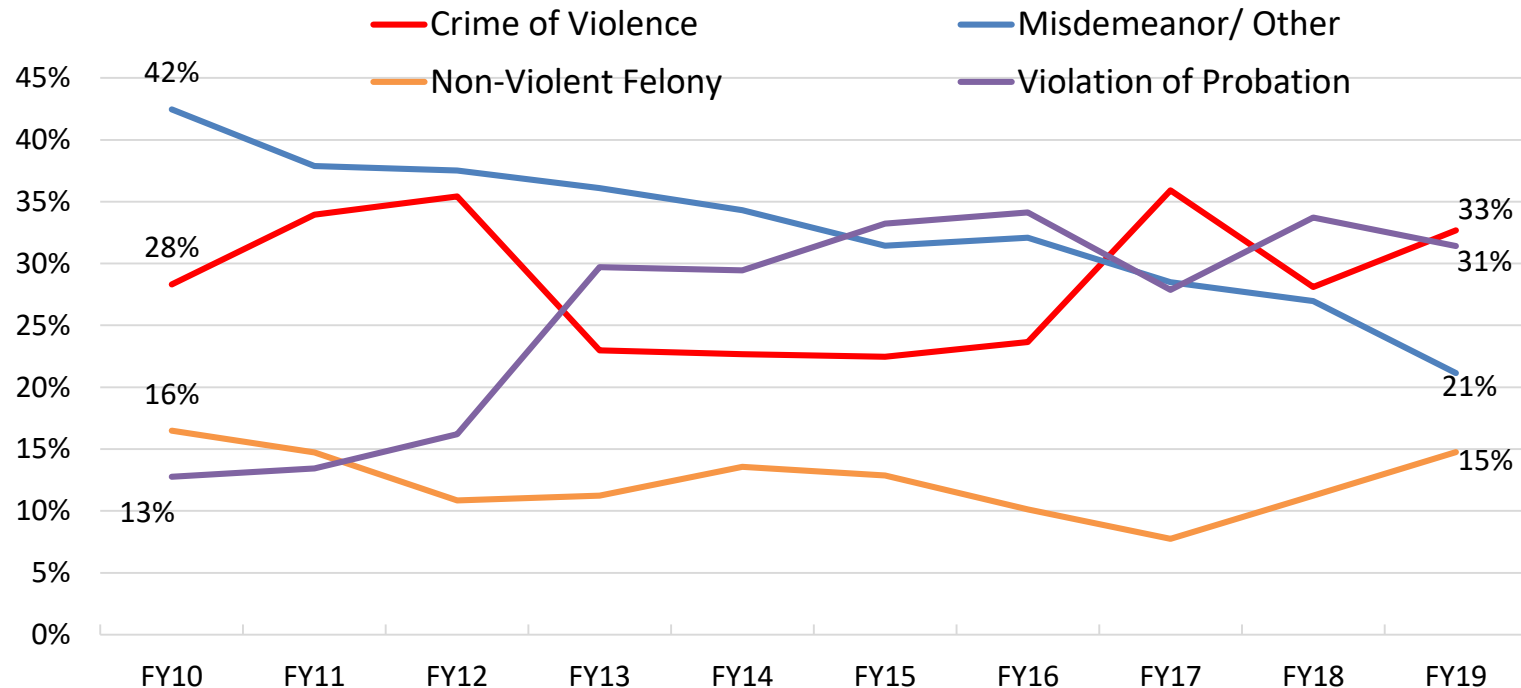
Metro Region Committed Youth Population Has Declined for All Facility Types

- Overall committed out-of-home population has declined 56.7% since FY10.
- DJS-Operated ADP decreased 45.4%, and Private In-State has declined 65.8%.
- Out-of-State committed average population declined from a high of 38 youth in FY15 to 13.7 in FY19.



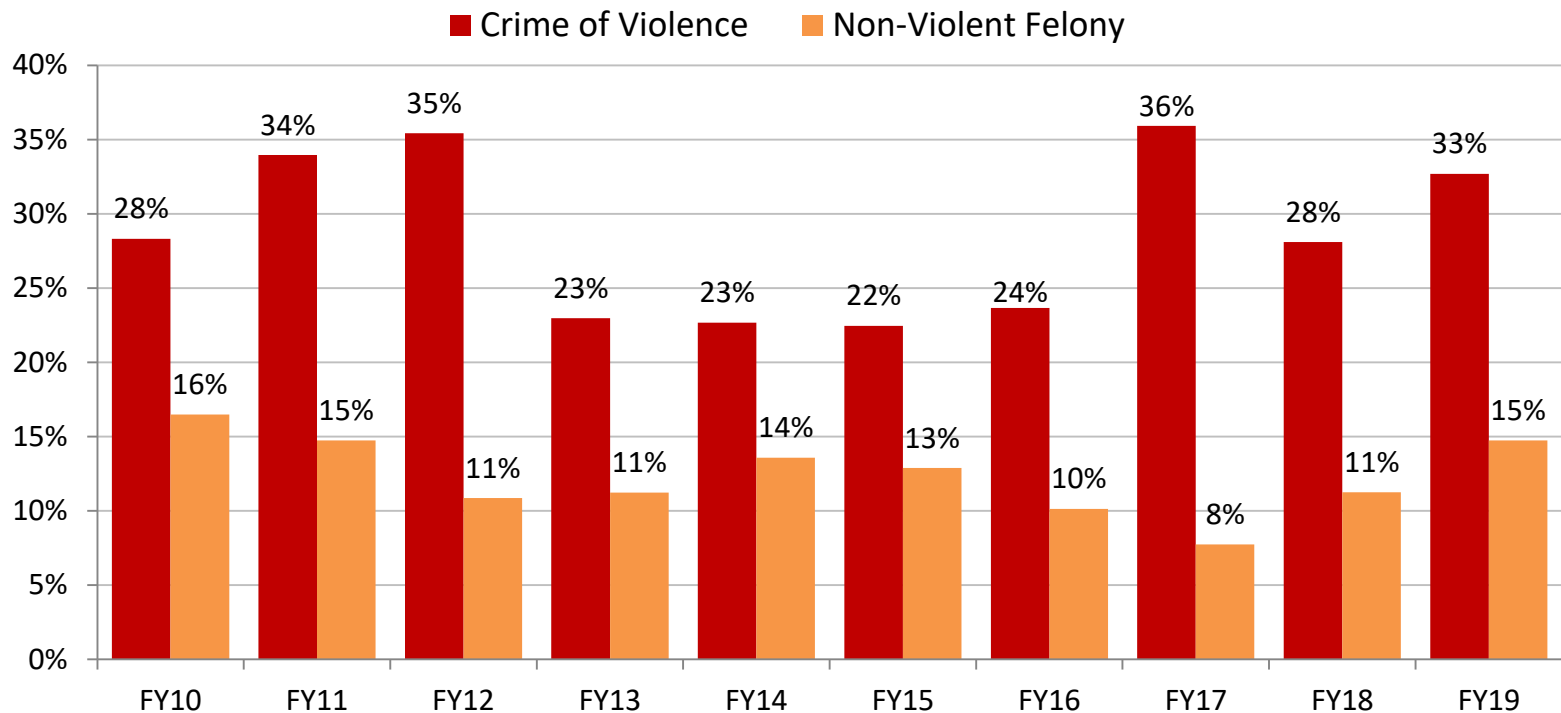
The Rate of Juveniles Committed for Low-Level Offenses Has Declined

- The proportion of new commitments that were for misdemeanor and other low-level offenses declined by 21 percentage points over 10 years.
- The proportion of new commitments that were for violations of probation has increased by 18 percentage points over 10 years.



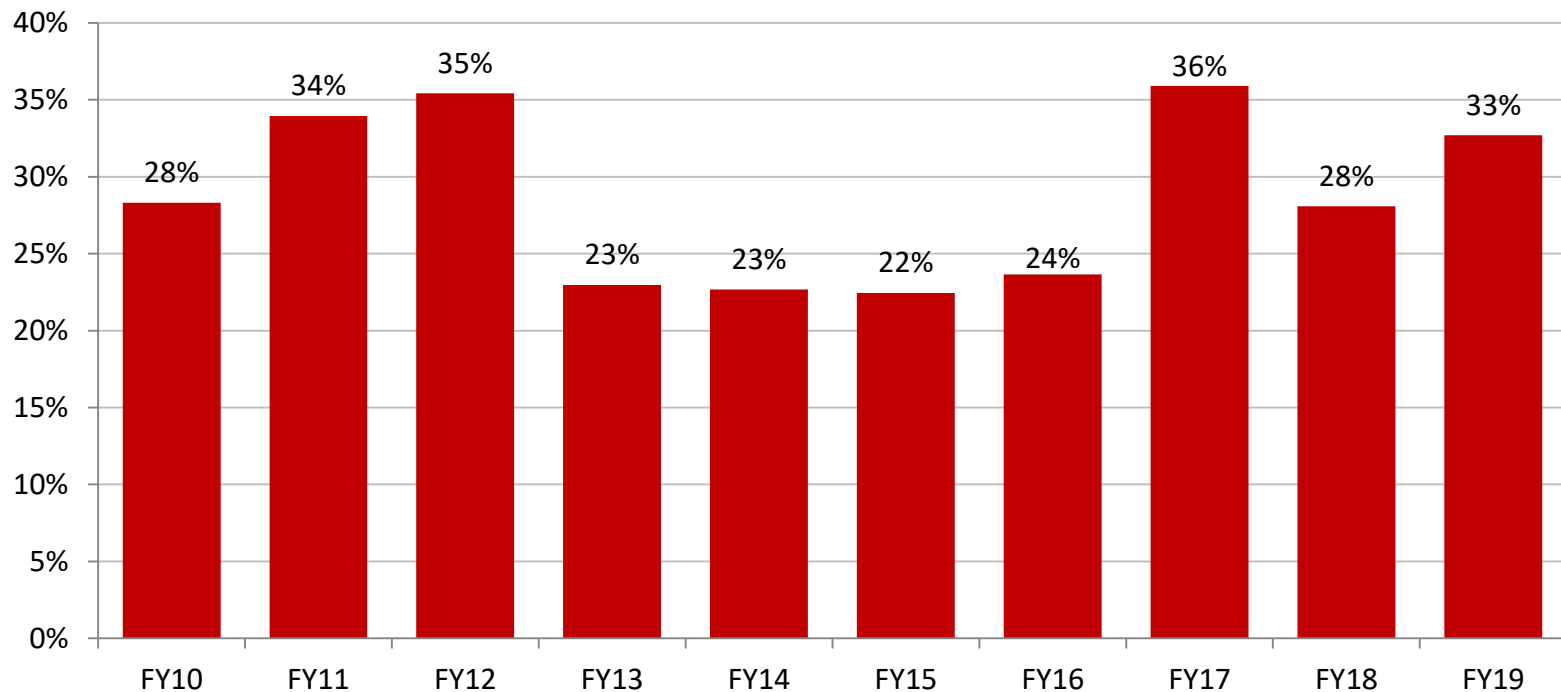
The Rate of Juveniles Committed for Crimes of Violence Is Up in the Metro Region

- Crimes of Violence made up a third (33%) of new commitments in FY 2019 in the Metro Region, 4.4 percentage points above the 10-year average of 28.6.
- Non-Violent Felonies have increased in the past two years as a proportion of new commitments, but the rate remains similar to a decade ago.



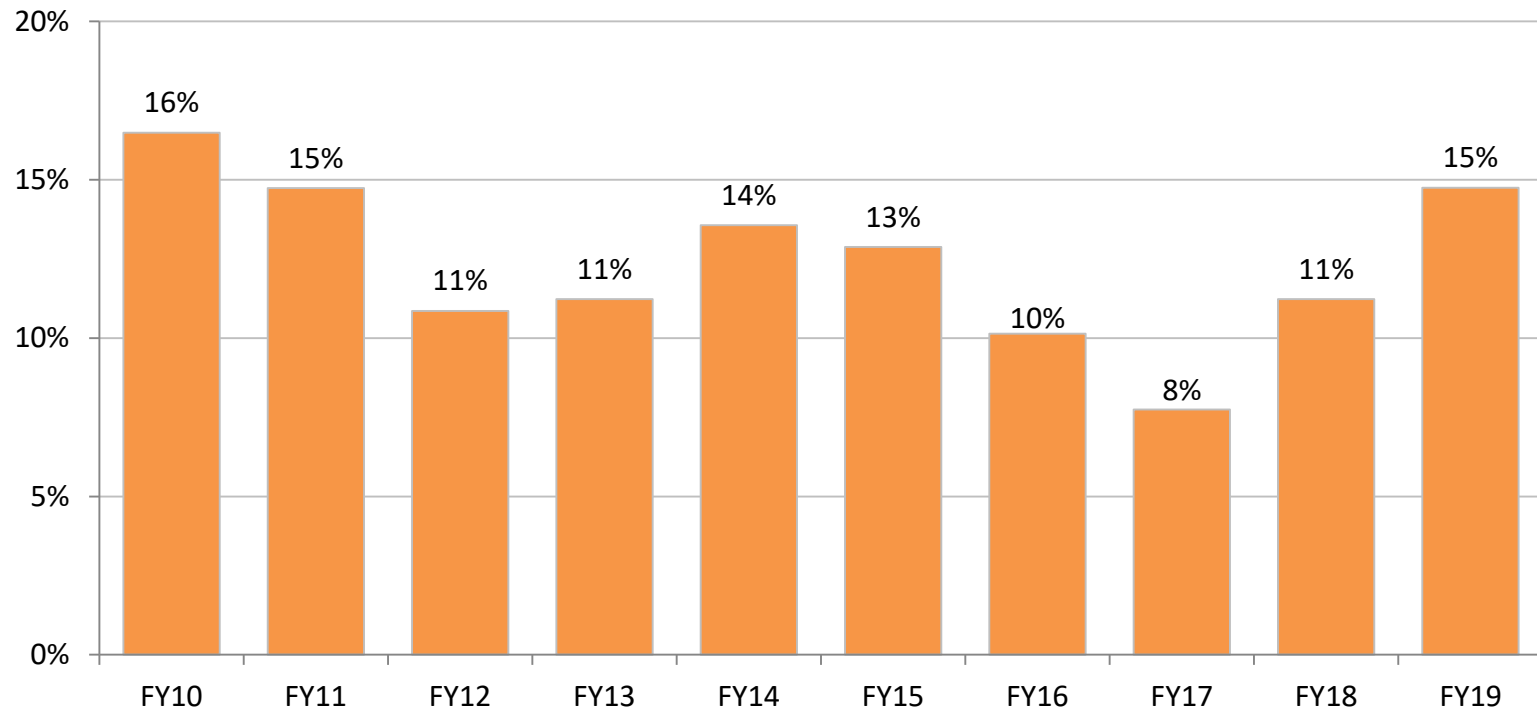
The Rate of Juveniles Committed for Crimes of Violence Is Up in the Metro Region

- Crimes of Violence make up a third (33%) of new commitments in FY 2019 in the Metro Region, an increase of 5 percentage points from FY10.



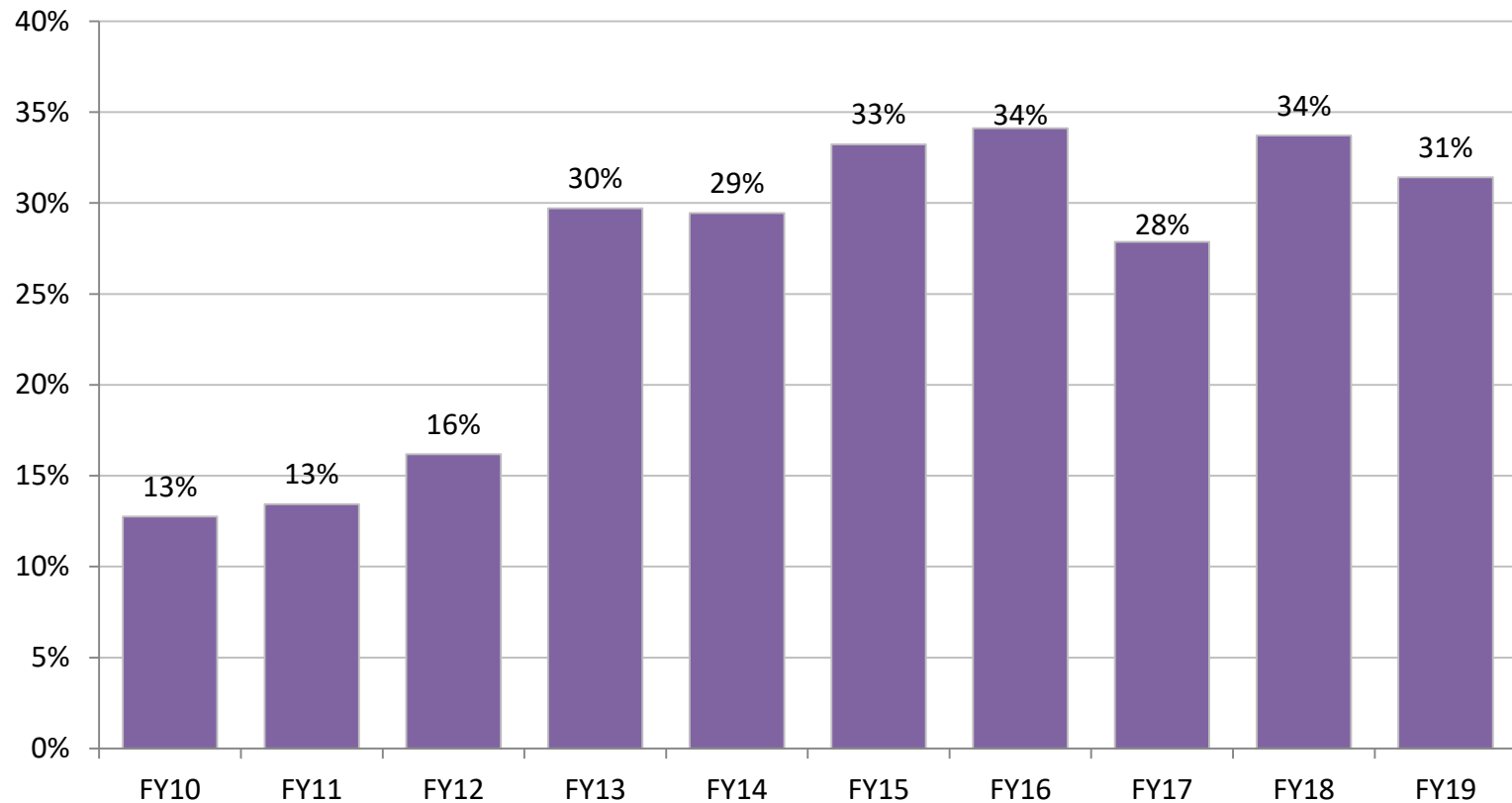
Rate of Juveniles Committed for Non-Violent Felonies Up for the Last Two Years

- The proportion of new commitments for non-violent felonies has increased by 7 percentage points since FY17.
- However, over 10 years, the rate of juveniles committed for non-violent felonies decreased by only 1 percentage point.



The Rate of Juveniles Committed for Violations of Probation Has Increased in the Metro Region

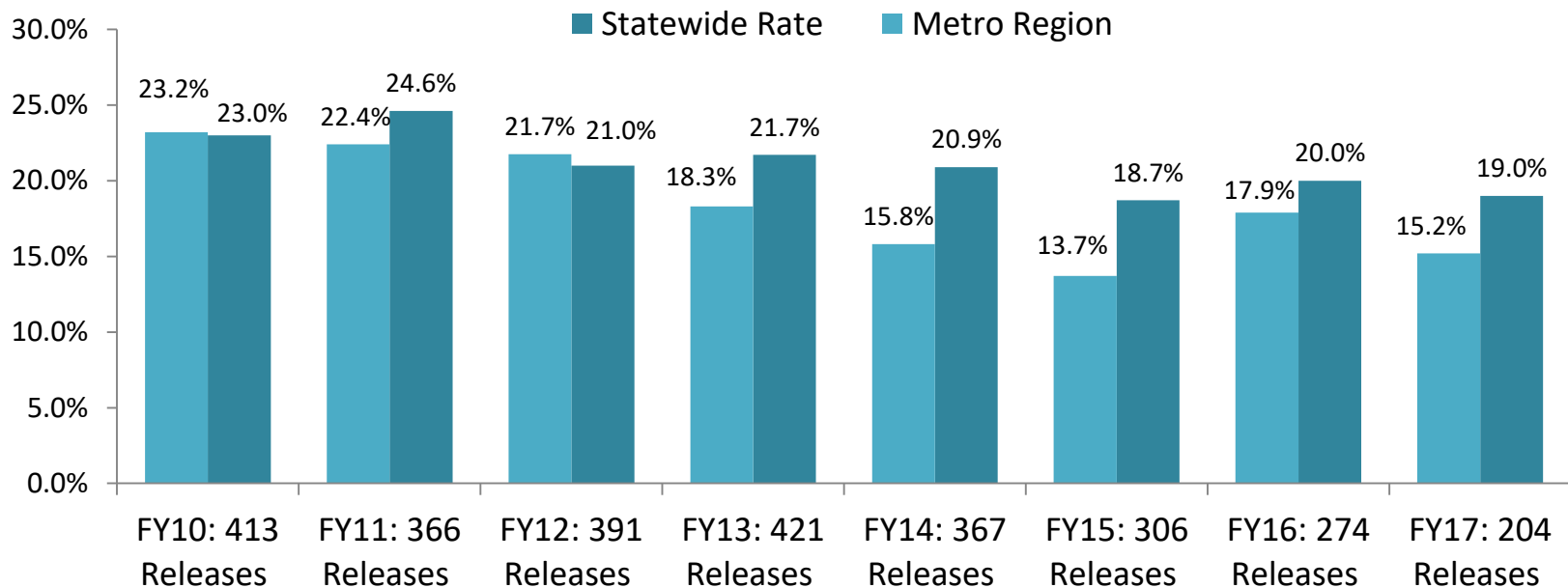
- The proportion of new commitments that were for Violations of Probation increased by 18 percentage points over 10 years.



Recidivism Rates for Metro Region DJS Committed Youth Decreased In The Last Year

- 15.2% of Metro Region youth released from committed placement in FY16 had a new offense within a year that resulted in a delinquent adjudication or criminal conviction, a decrease of 2.7 percentage points from FY16 and a decrease of 8.0 points since FY10.
- The Statewide rate was 19.0% for FY17, down 1.0 percentage points from FY16 and down 4.0 points since FY10.

One-Year Re-Adjudication/Conviction Rate for All Committed Programs



Recidivism Rates for Metro Region DJS Probation Youth Have Increased in the Past Year

- 19.5% of Metro Region youth placed on probation for the first time in FY17 had a new offense within a year that resulted in a delinquent adjudication or criminal conviction, an increase of 6.8 percentage points from FY16.
- The Statewide rate was 20.4% in FY17, up 1.0 percentage points from FY16.

