

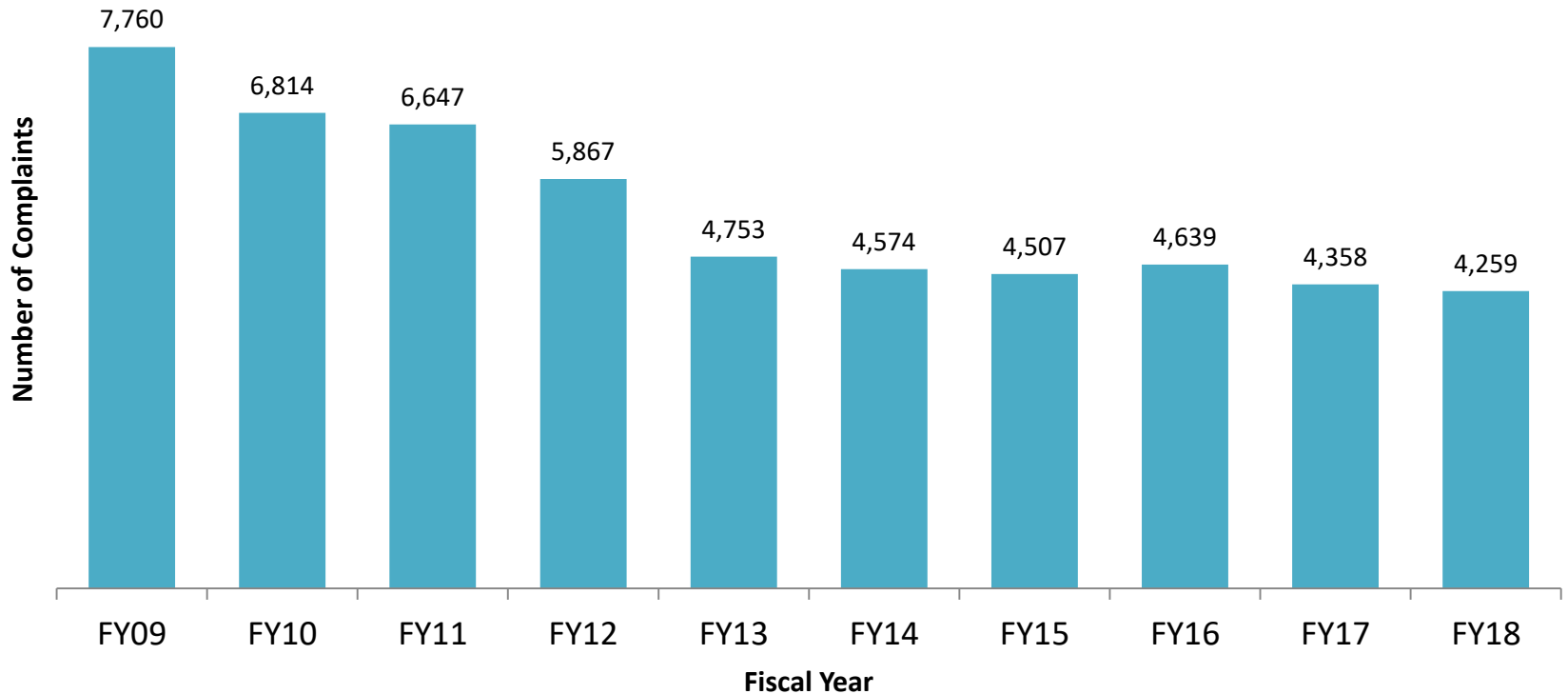


Southern Region Juvenile Services Long Term Trends: Counties of Anne Arundel, Calvert, Charles, and St. Mary's

DJS Office of Research and Evaluation, February 2019

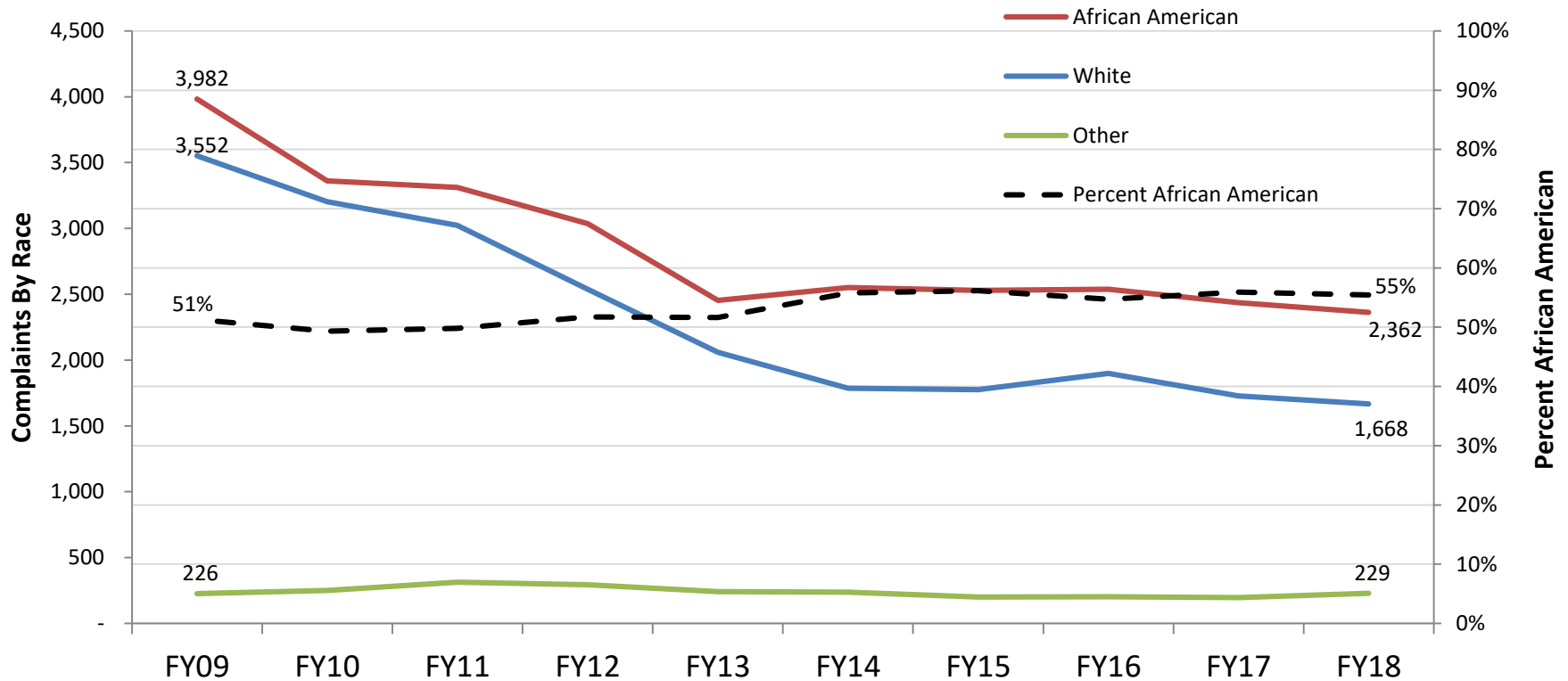
Southern Region Juvenile Complaints Have Declined Significantly

- Southern Region complaints referred to DJS Intake declined 45.1% in ten years.
- Statewide complaints declined 59.4% over the same period.



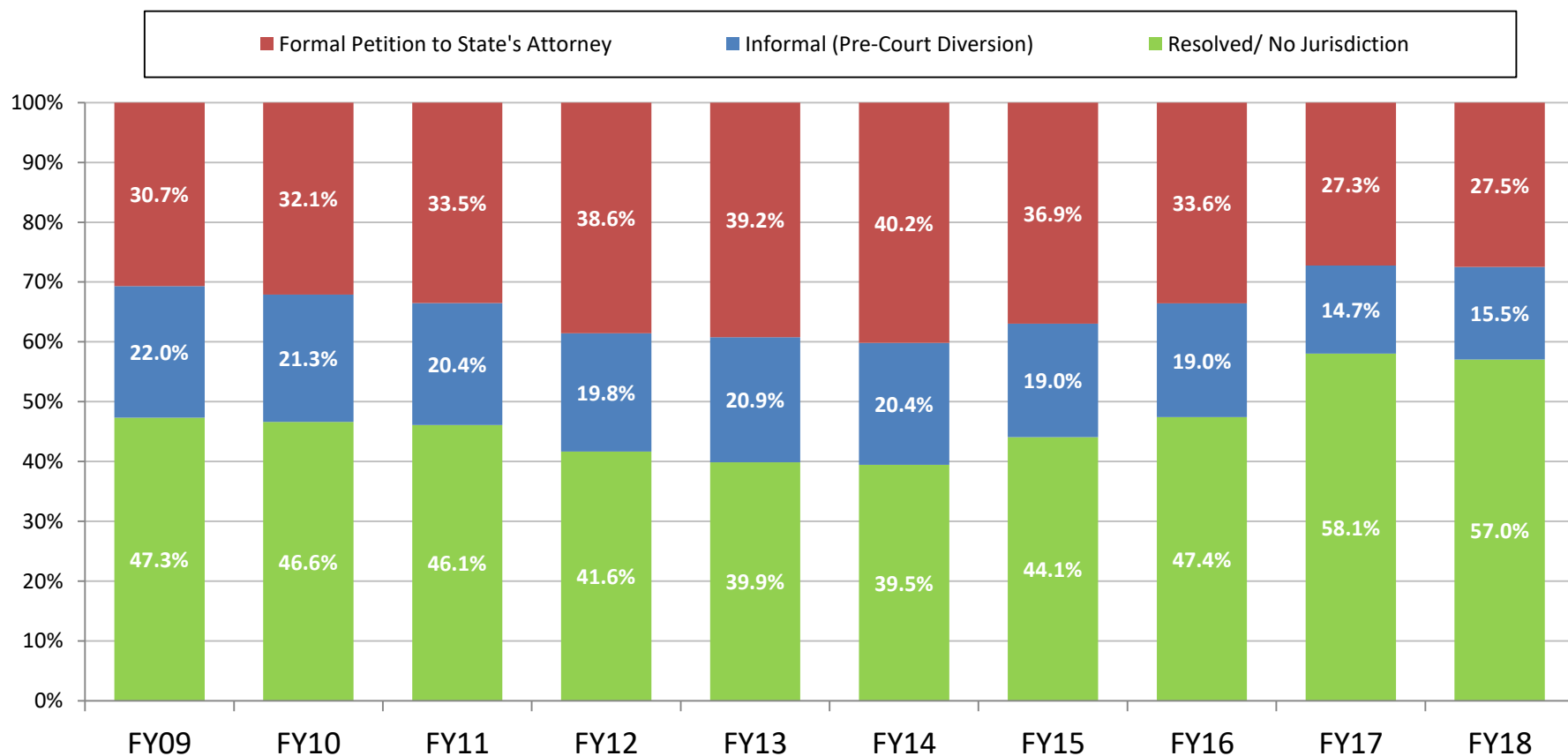
Juvenile Complaints in Southern Region Have Declined for Most Race/Ethnicities Since FY09

- Complaints for Southern Region African American youth declined 40.7%, and declined 53.0% for white youth.
- African American youth comprise 55.5% of complaints in FY 2018.
- African American youth comprise 23.6% of the general population.



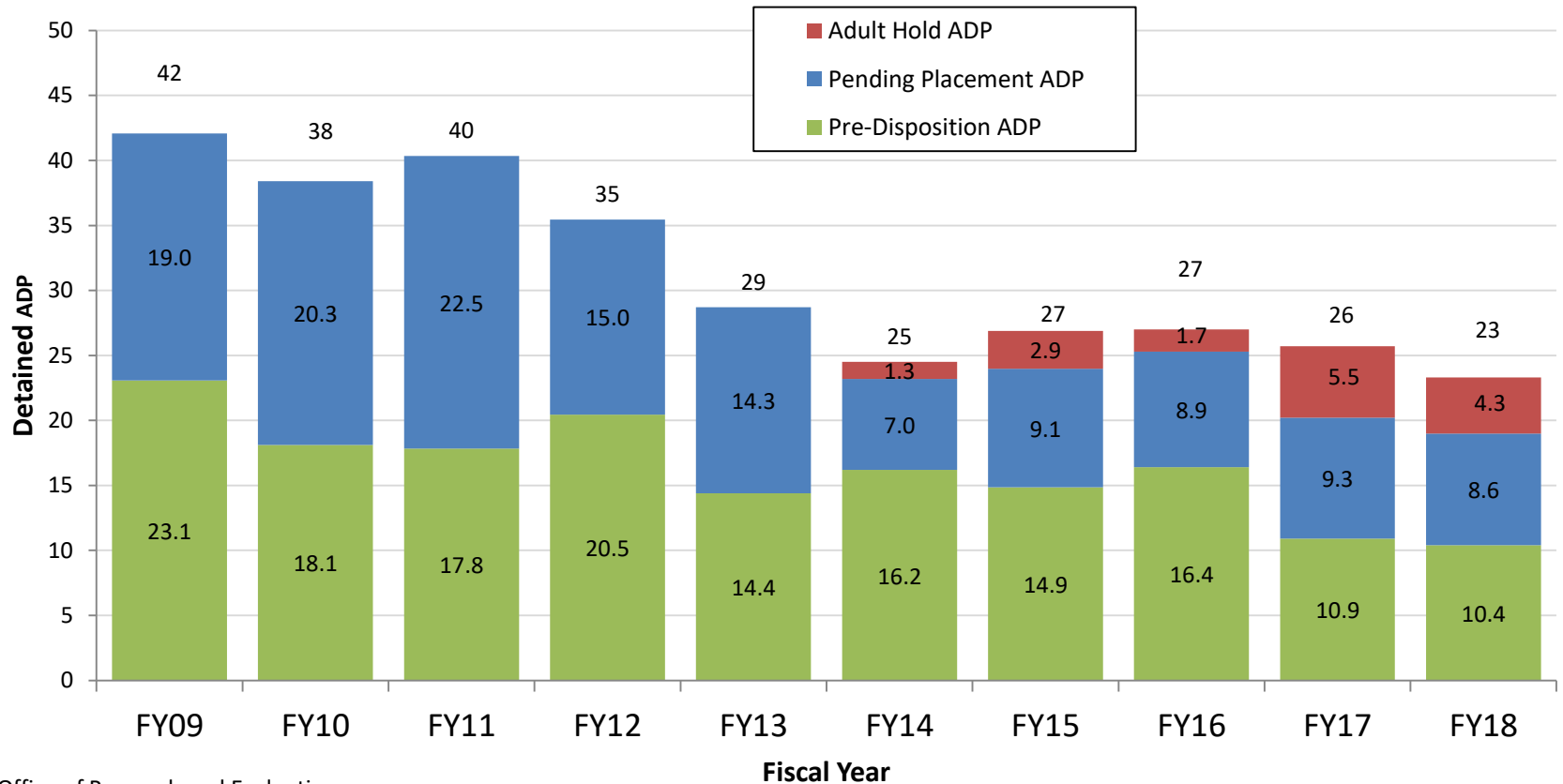
The Percent of Cases Referred to Juvenile Court by Southern Region has Remained Stable Over the Past Two Years

- 27.5% of Southern Region complaints were referred to court by DJS Intake in FY18, 3.2% less than in FY09. Statewide 45.0% were referred to court.
- 15.5% of Southern Region complaints were diverted to an informal DJS pre-court case. Statewide 15.2% were diverted.



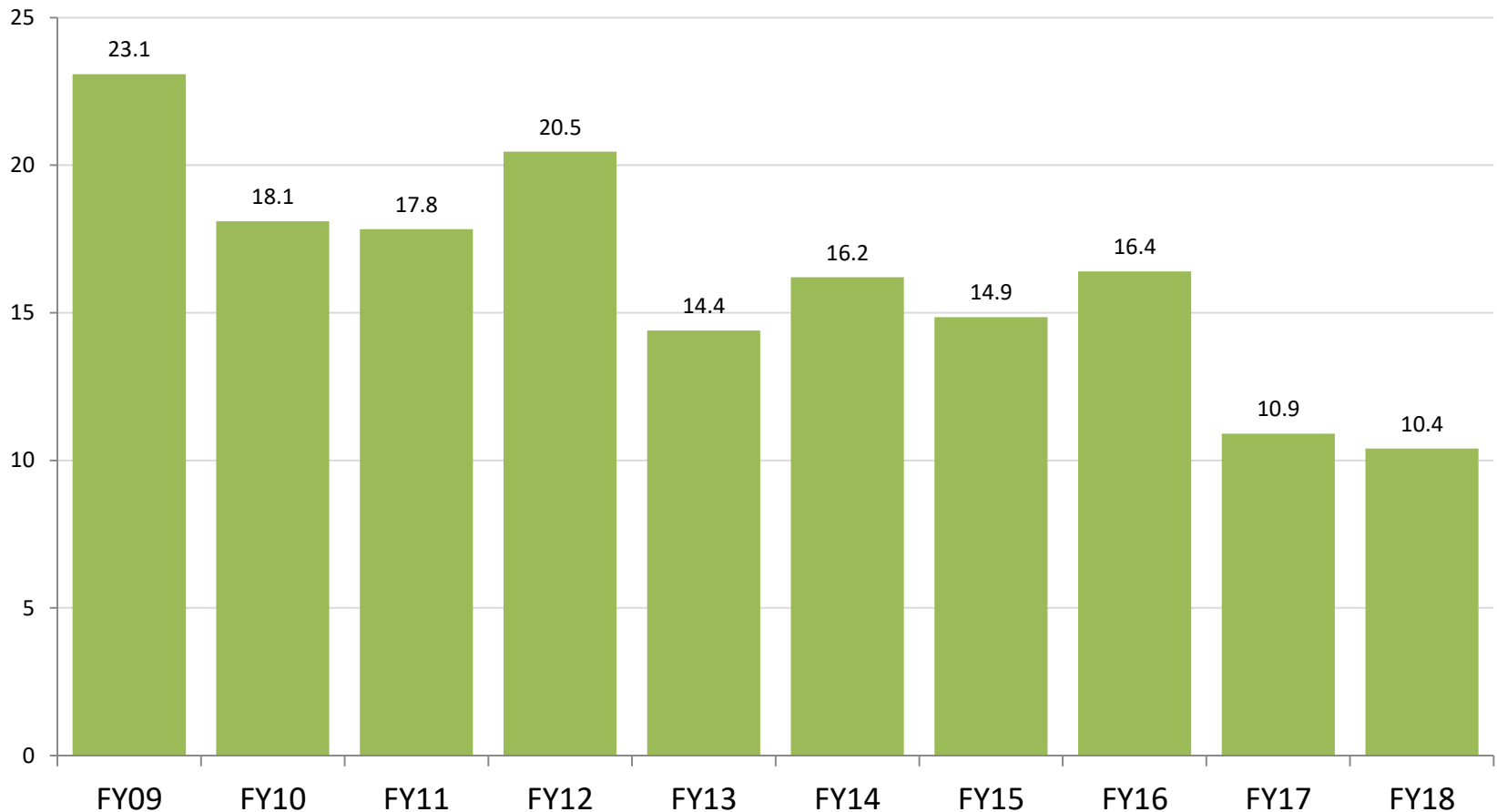
Southern Region Detention Population Has Declined Significantly

- Southern Region daily population in DJS detention declined 45.2% in ten years, to 23 in FY18. The statewide detention population declined 27.6% over the same period.
- Cases detained for the Adult Court now make up 18.7% of the DJS detained population in Southern Region.



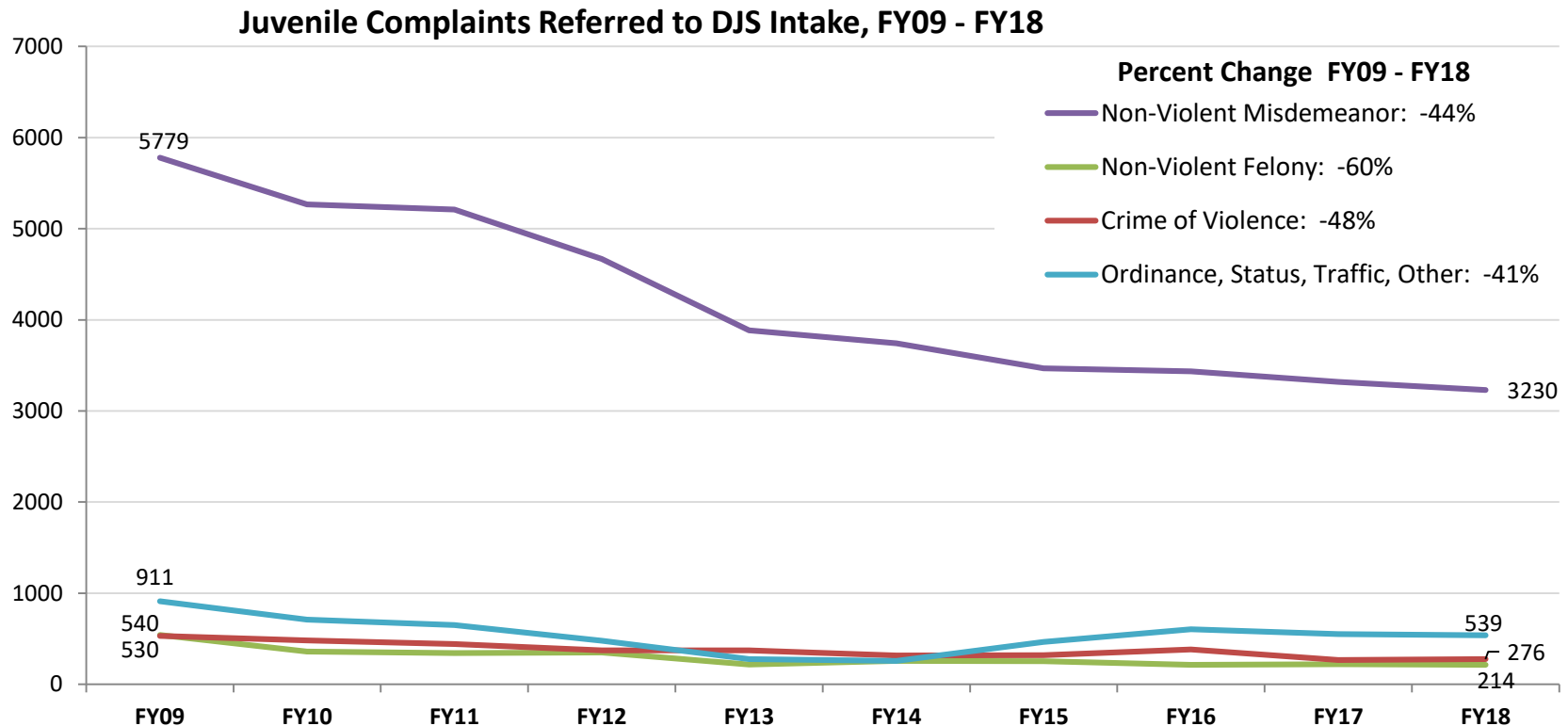
Southern Region Youth Population In Detention Pre-Disposition Has Declined Significantly

- The Southern Region juvenile pre-dispositional detained population declined 55.0% in 10 years to 10.4 in FY 2018.



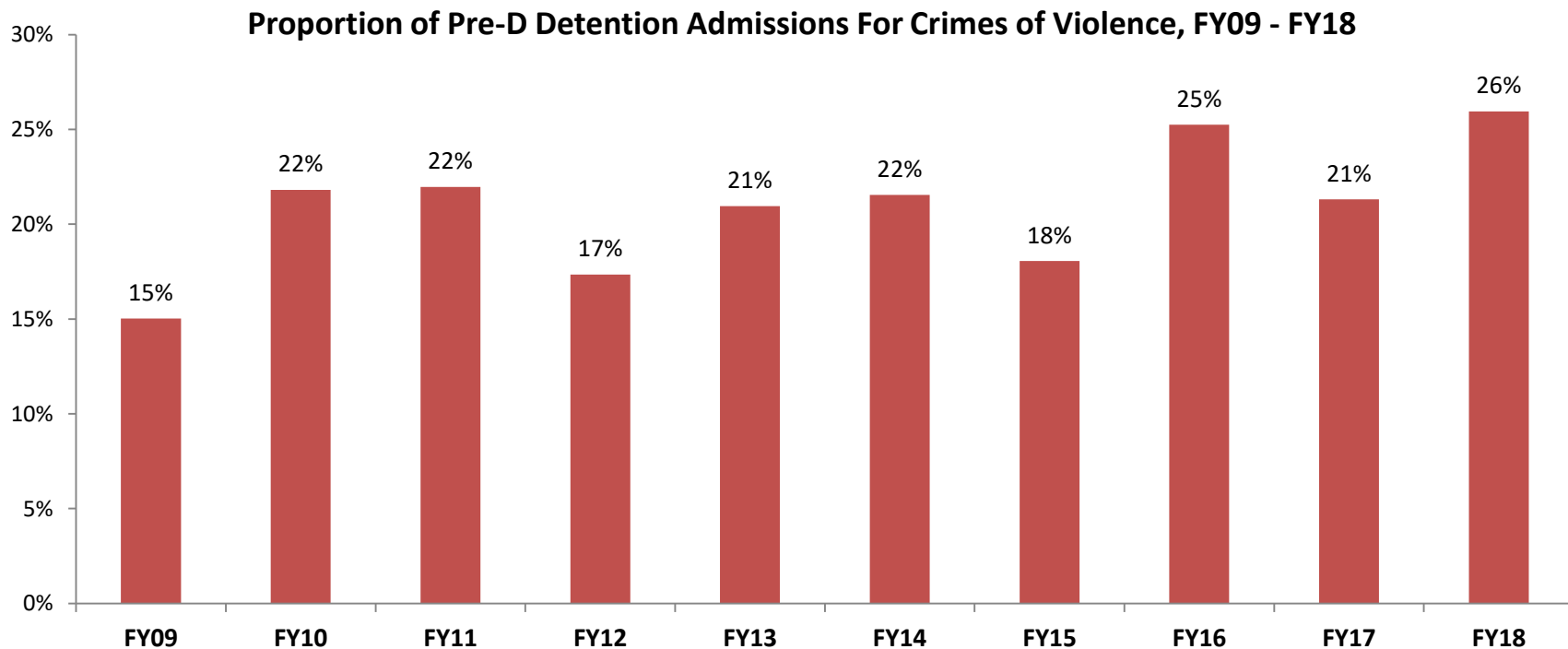
Southern Region Pre-Disposition Detention Placements Have Decreased for All Complaint Types

- Youth detained pending disposition for non-violent felony has decreased 60.4% over 10 years.
- Youth detained pending disposition for crimes of violence has decreased 47.9% over 10 years.



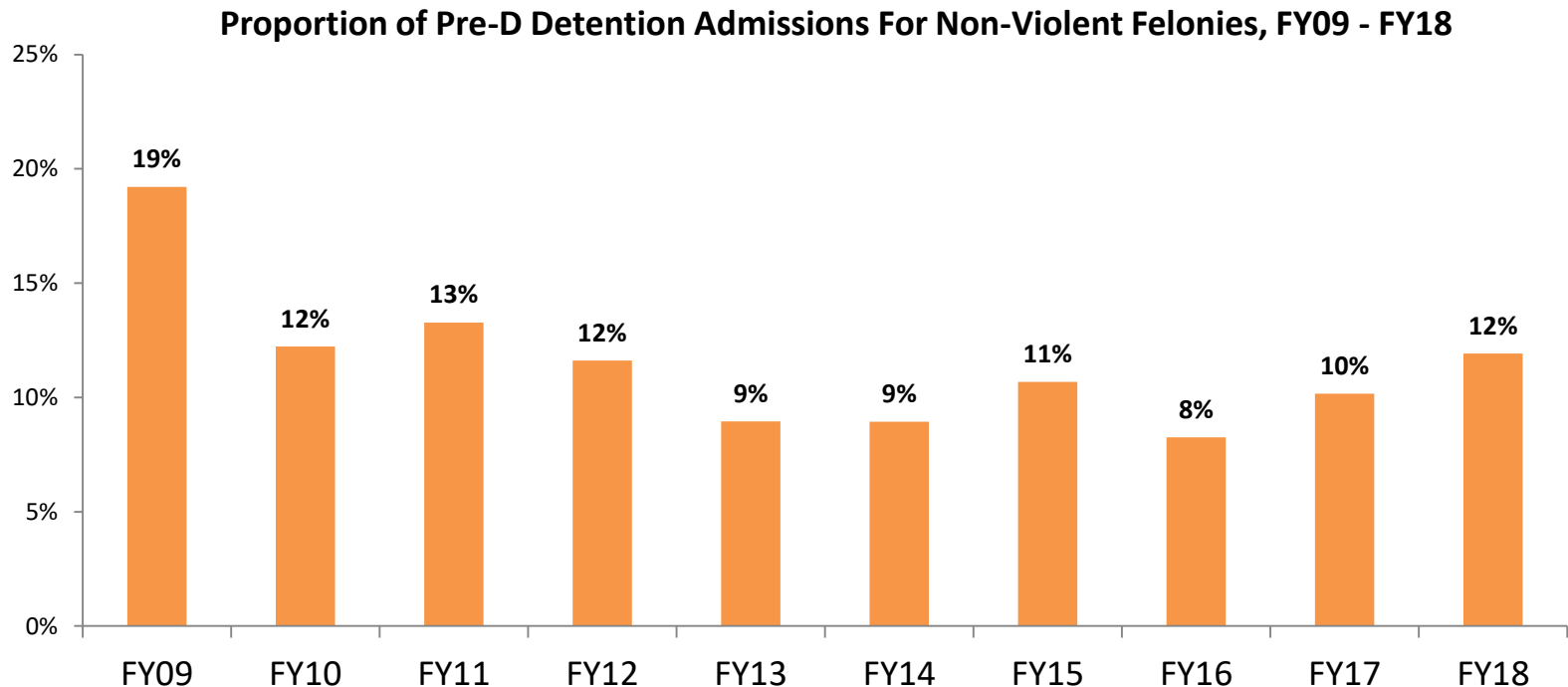
Crimes of Violence Make Up an Increasing Proportion of Detention Placement Offenses

- The detained population is increasingly comprised of youth with violent crimes complaints.
- The proportion of youth detained pre-disposition for Crimes of Violence complaints has increased 11 percentage points over ten years.



Detention Placements for Non-Violent Felonies Has Increased in Recent Years

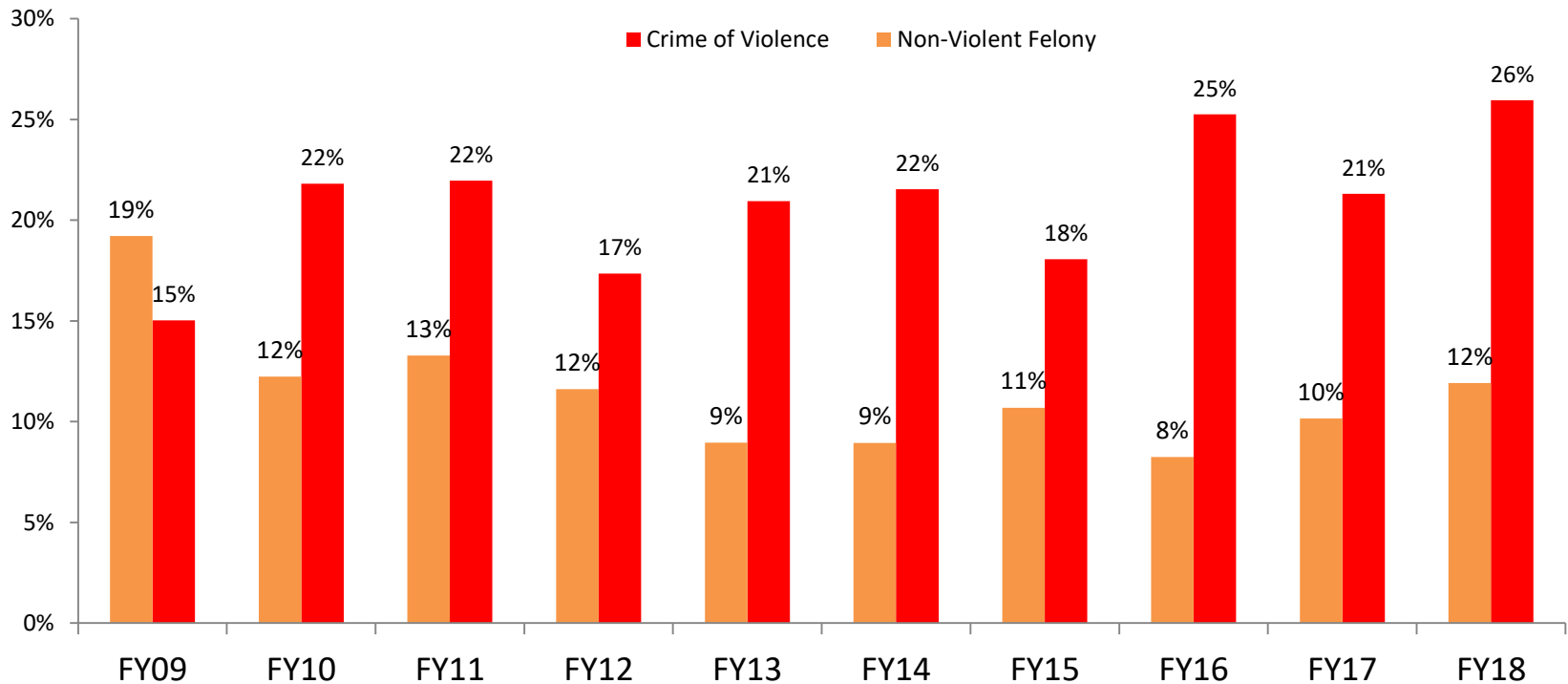
- The proportion of youth detained pre-disposition for non-violent felony complaints decreased 7 percentage points over ten years.
- The proportion of youth detained pre-disposition for non-violent felony complaints increased 4 percentage points between FY16 and FY18.



Southern Region Pre-D Detention Population

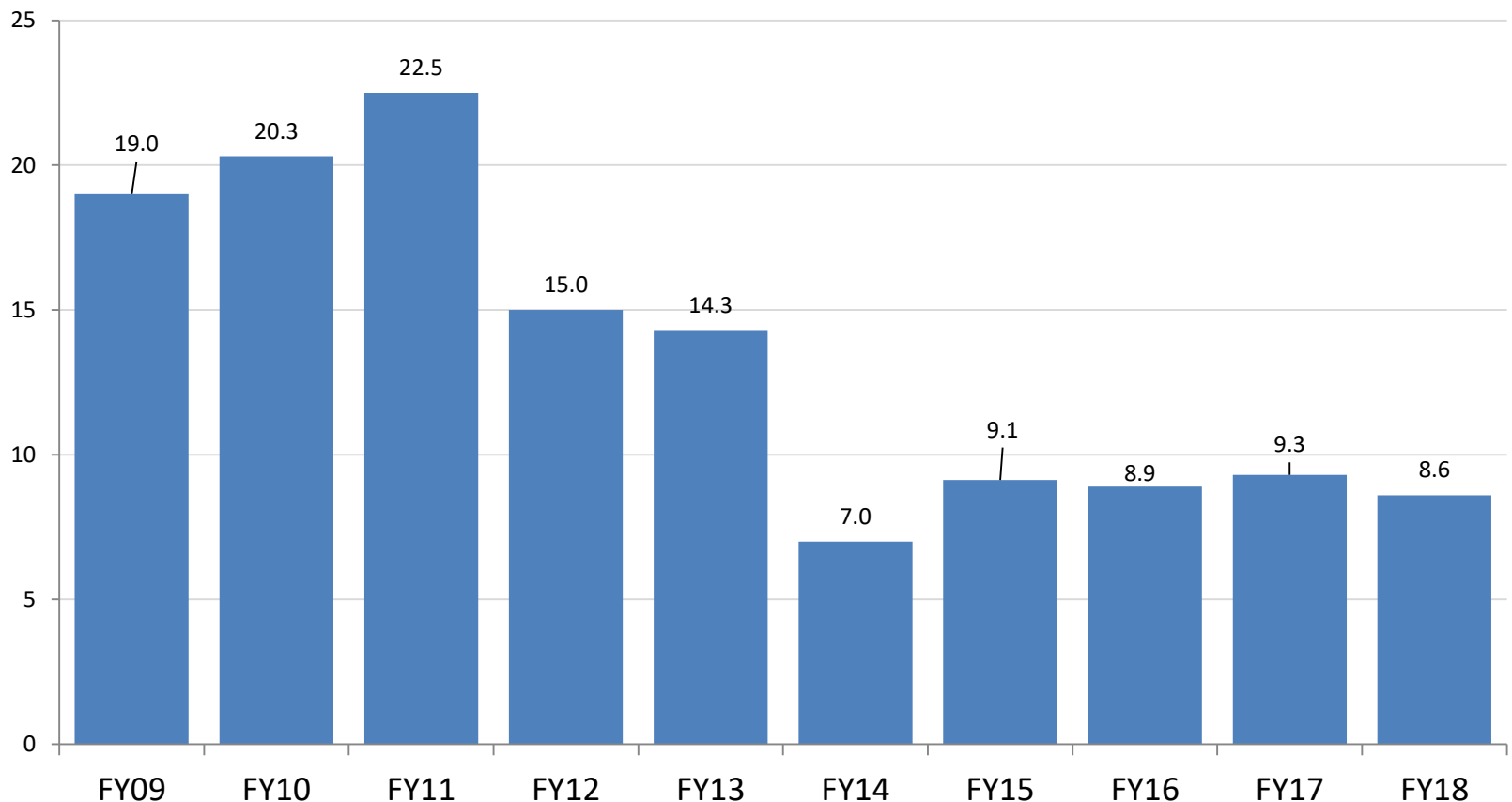
- Youth detained pre-disposition for crimes of violence increased 11 percentage points over 10 years.
- Pre-disposition for non-violent felonies decreased 7 percentage points over 10 years.

Proportion of Pre-D Detention Admissions For Non-Violent Felonies, FY09 - FY18



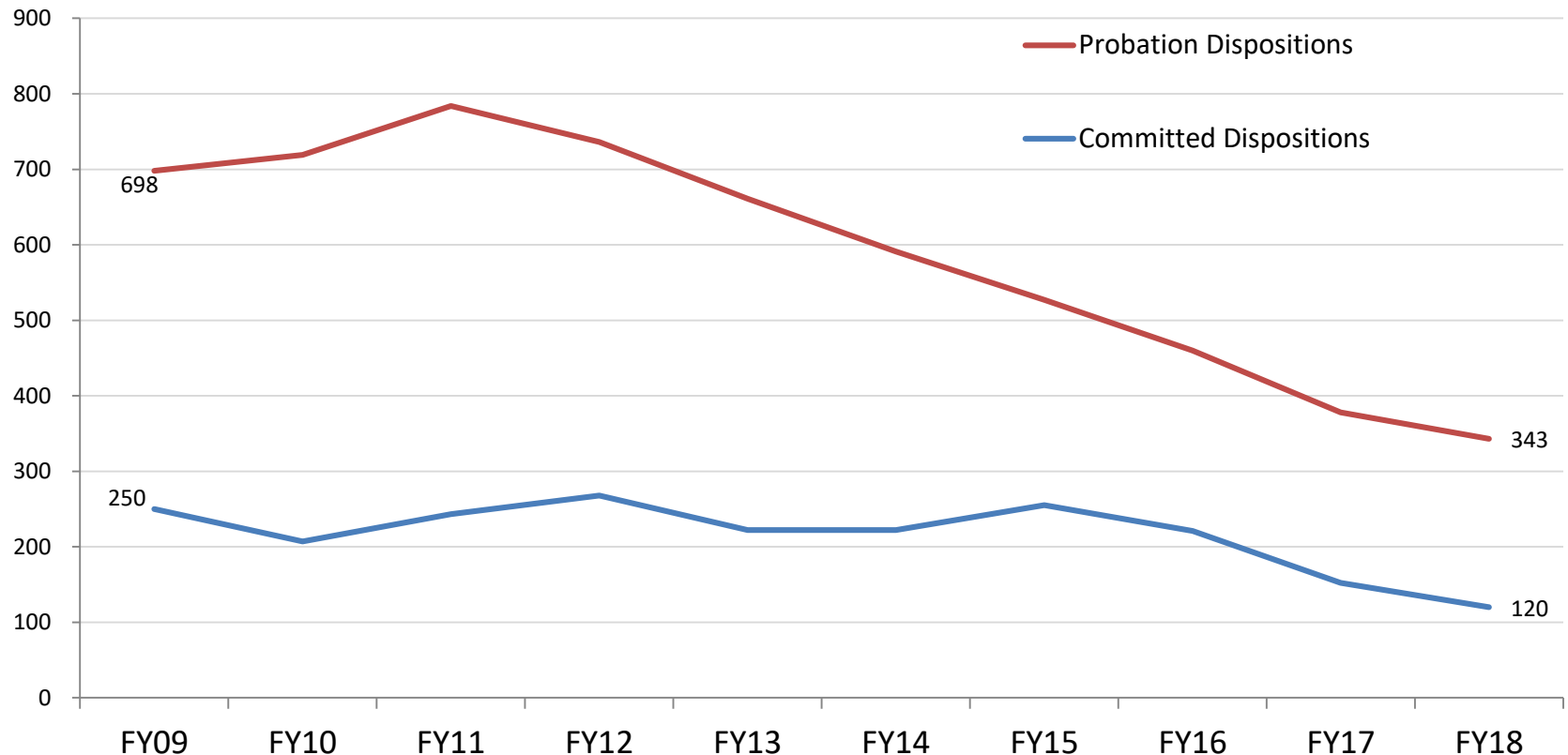
Southern Region Youth In Detention Pending a Committed Placement Has Declined Dramatically

- Juvenile court pending placement population declined 54.7% in ten years to 8.6 youth in FY 2018.



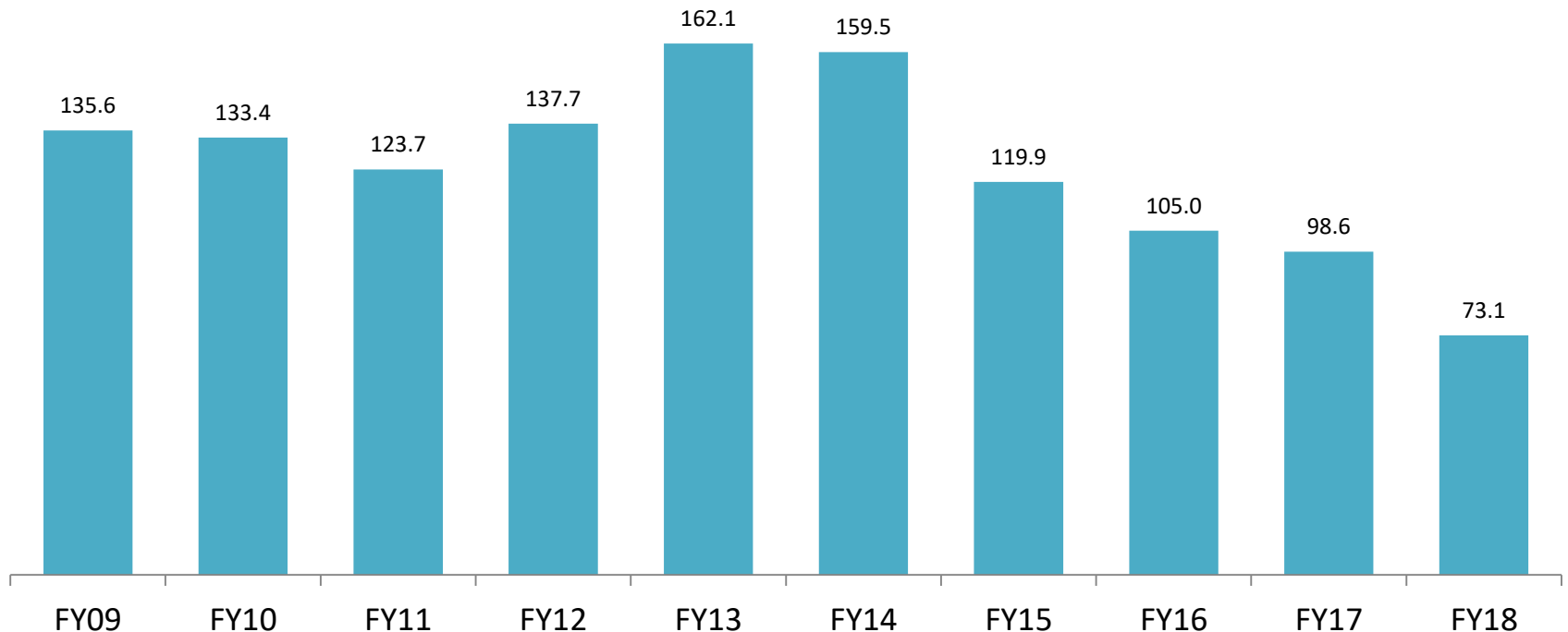
Juvenile Probation and Commitment Orders Have Declined

- Southern Region Juvenile probation orders declined 50.9% in 10 years. Statewide probation orders declined 58.6% over the same period.
- Southern Region juvenile commitments declined 52.0% in 10 years. Statewide commitments declined 52.8% over the same period.



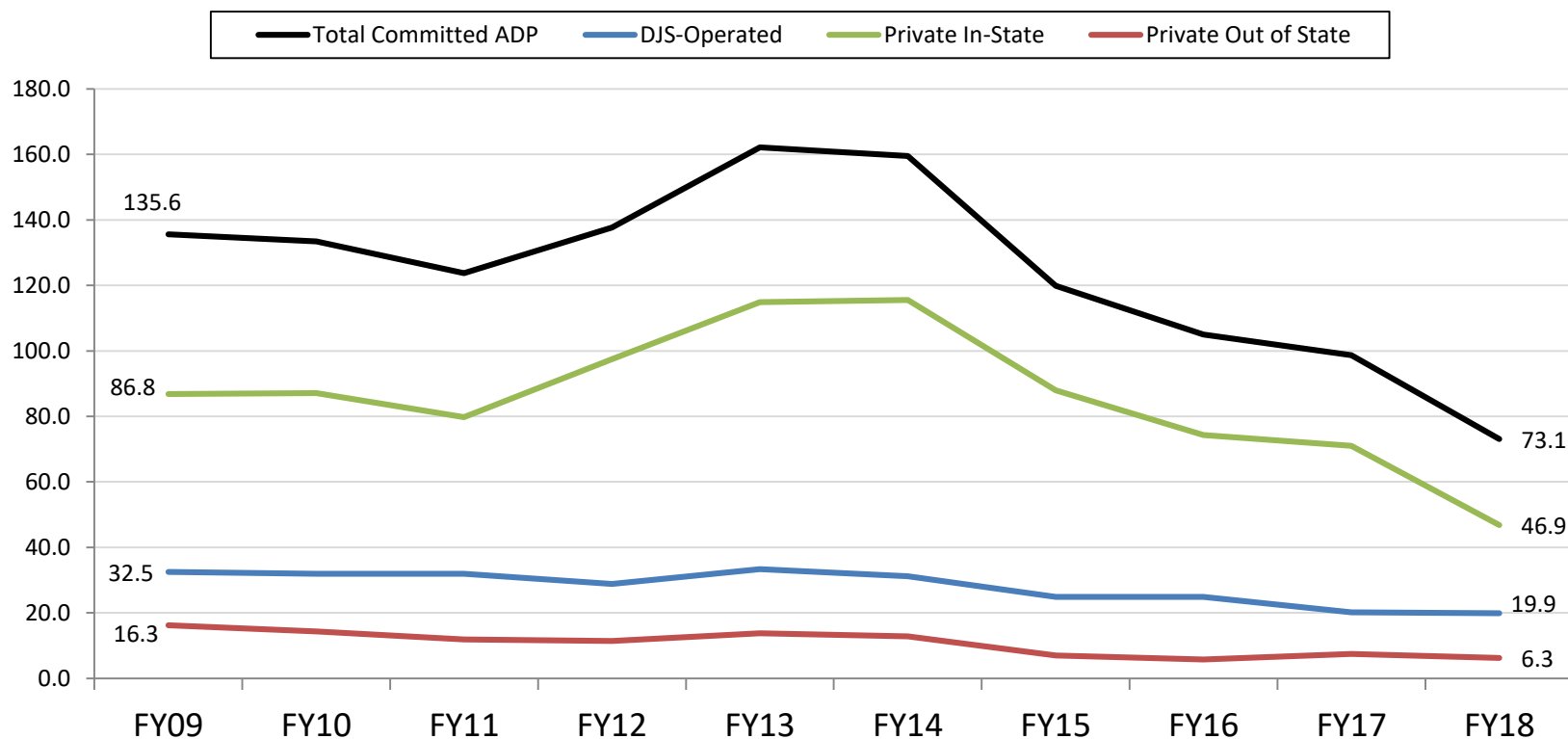
Average Committed Out of Home Population Has Declined Significantly in the Southern Region

- The overall daily population of Southern Region youth committed by the juvenile court to out of home placement declined 46.1% over ten years, from 135.6 in FY09 to 73.1 in FY18.
- Statewide average committed population declined 55.5% over the same period.



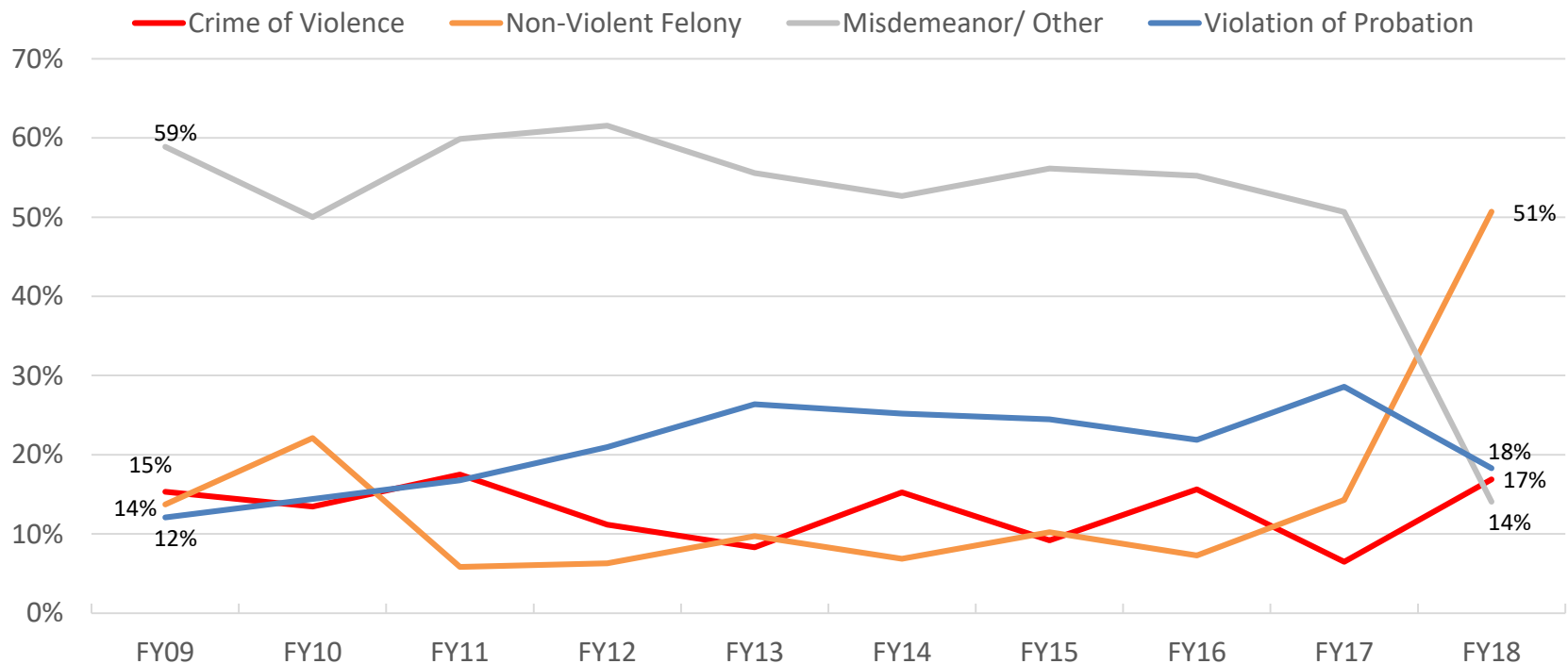
Southern Region Committed Youth Population Has Declined for All Facility Types

- Overall committed out-of-home population has declined 46.1% since FY09.
- DJS-Operated ADP decreased 38.8%, and Private In-State has declined 46.0% since FY09.
- Out of State committed average population declined from the high of 16.3 in FY09 to just 6.3 in FY18.



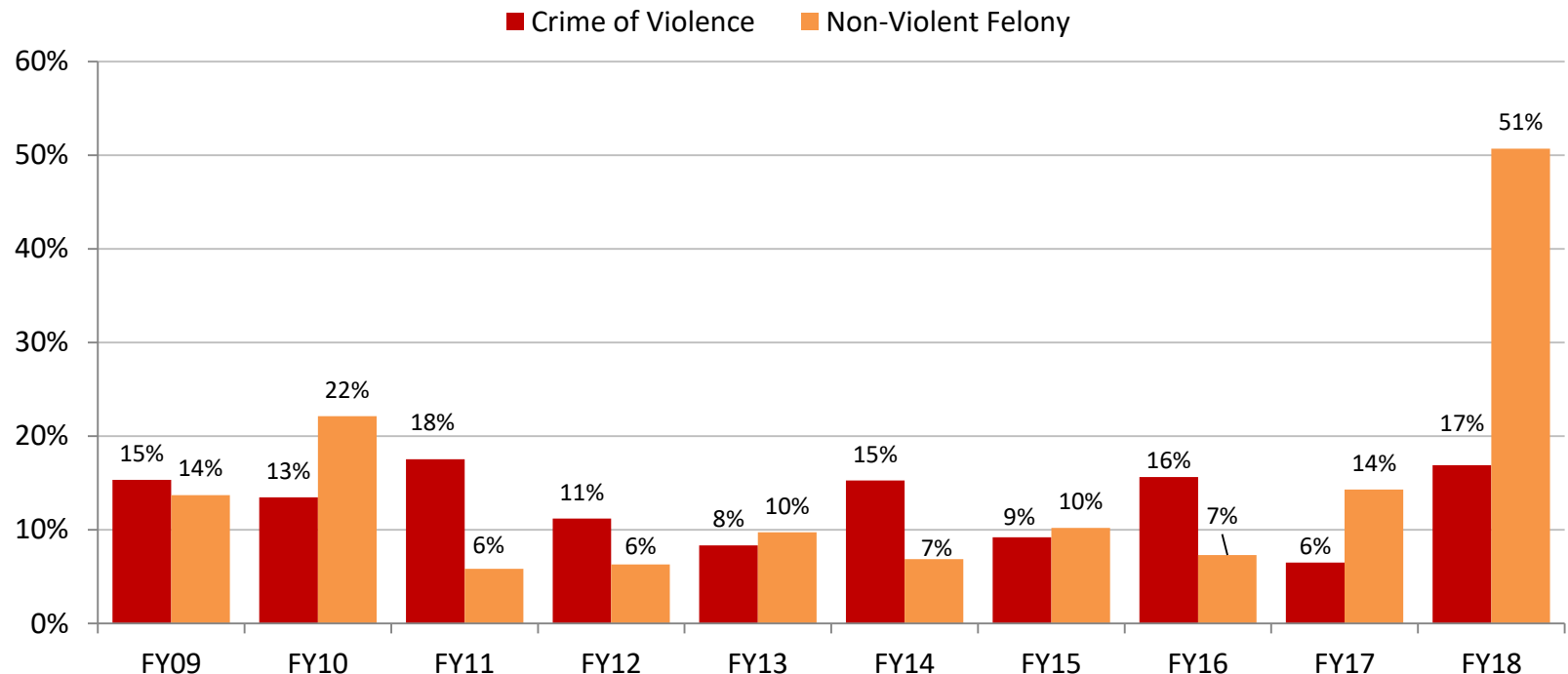
The Rate of Juveniles Committed for Low-Level Offenses Has Declined

- The proportion of new commitments for non-violent felonies increased by 37 percentage points in the last year.
- The proportion of new commitments for misdemeanor/other decreased by 45 percentage points in the last year.



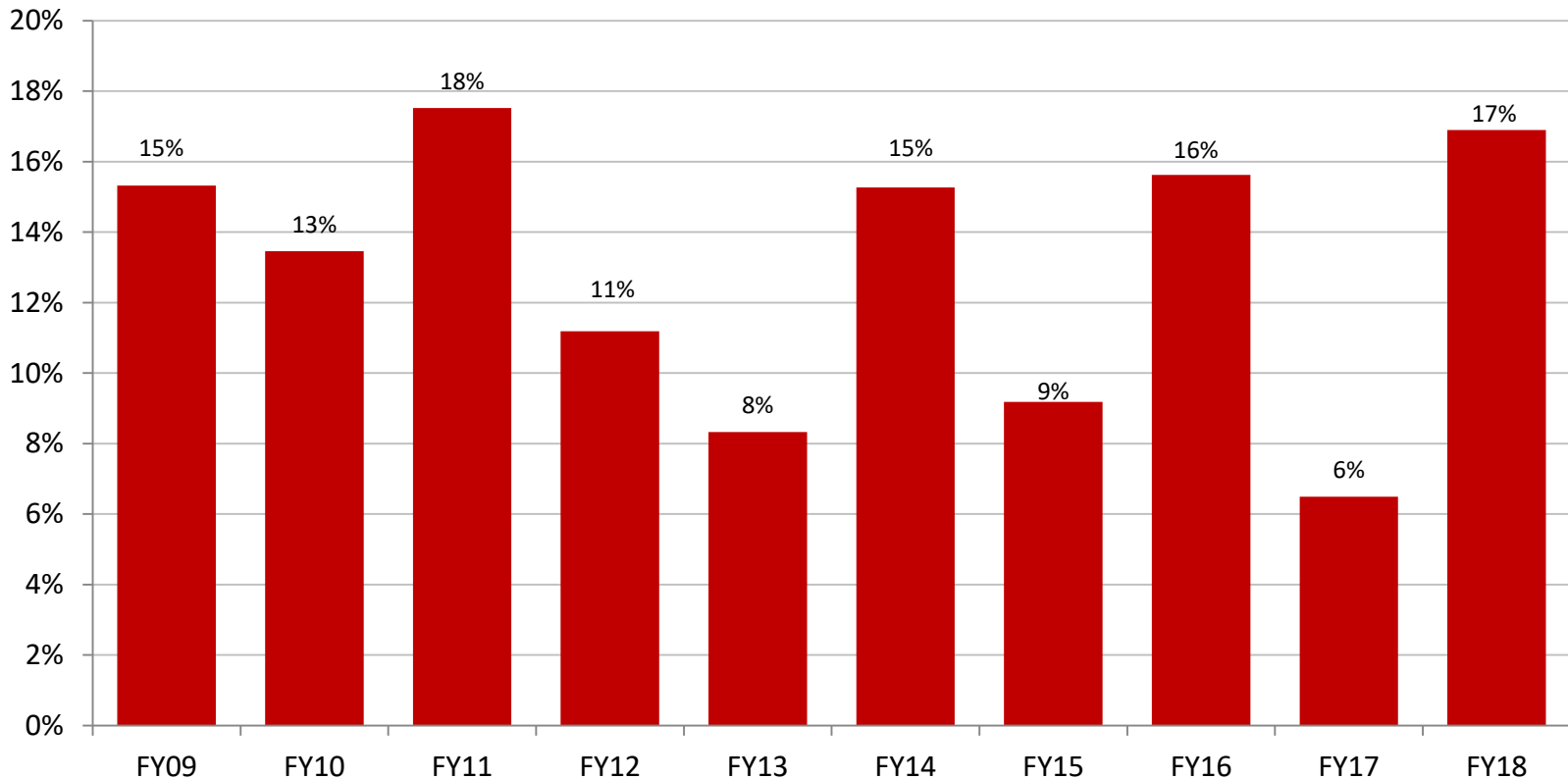
The Rate of Juveniles Committed for Non-Violent Felonies Has Increased in the Southern Region

- Crimes of Violence increased 11 percentage points in the last year.
- The rate of juveniles committed for non-violent felonies has increased by 37 percentage points since FY09.



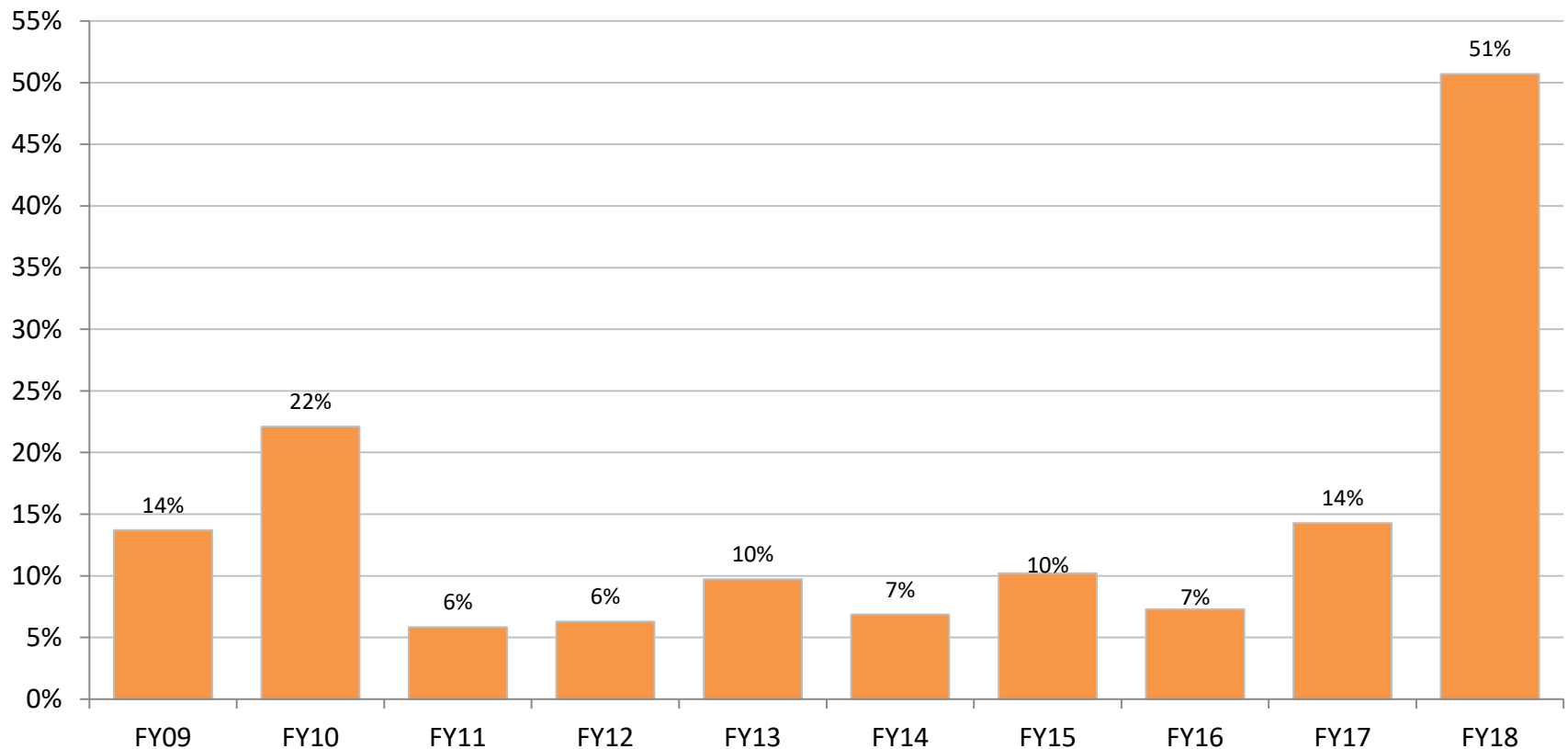
The Rate of Juveniles Committed for Crimes of Violence Has Increased in the Southern Region

- Crimes of Violence made up 17% of new commitments in FY 2018 in the Southern Region.



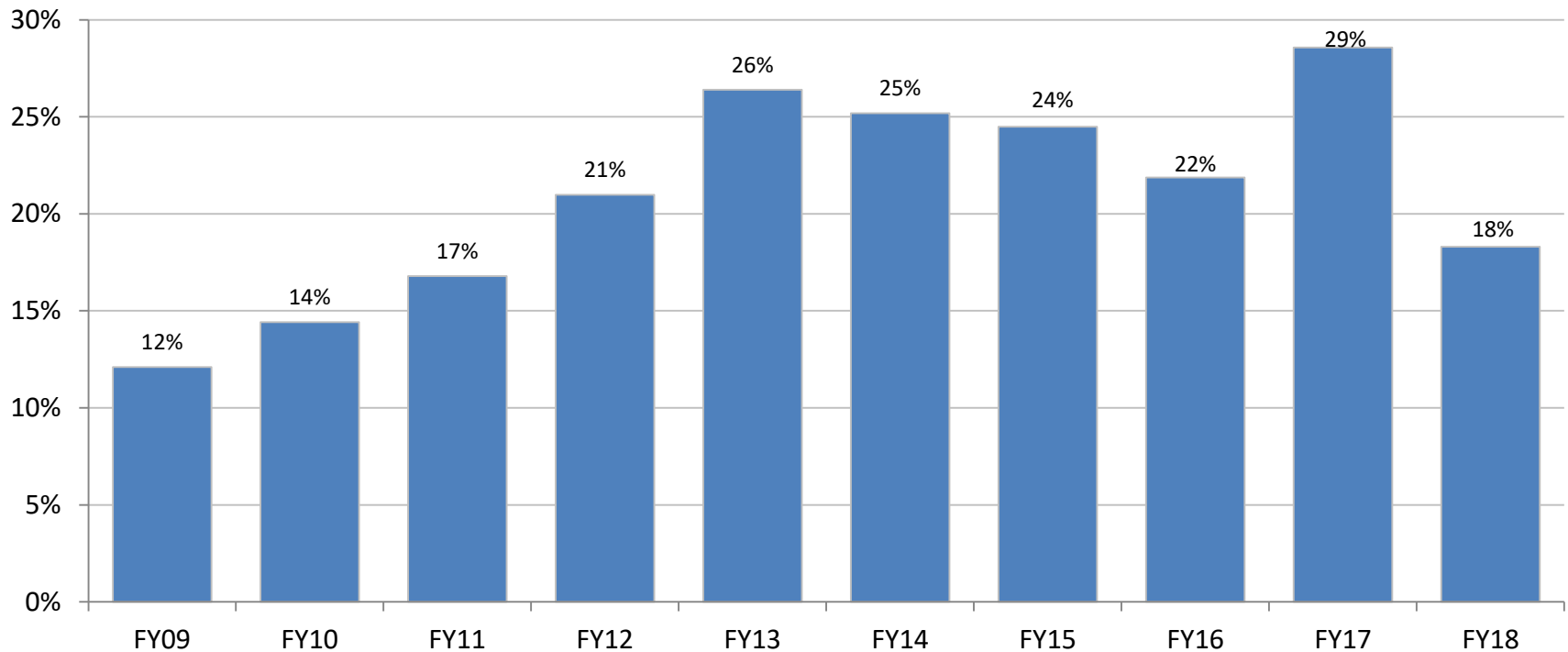
The Rate of Juveniles Committed for Non-Violent Felonies has Increased in Southern Region

- Non-Violent felony commitments increased 37 points over 10 years in the Southern Region.



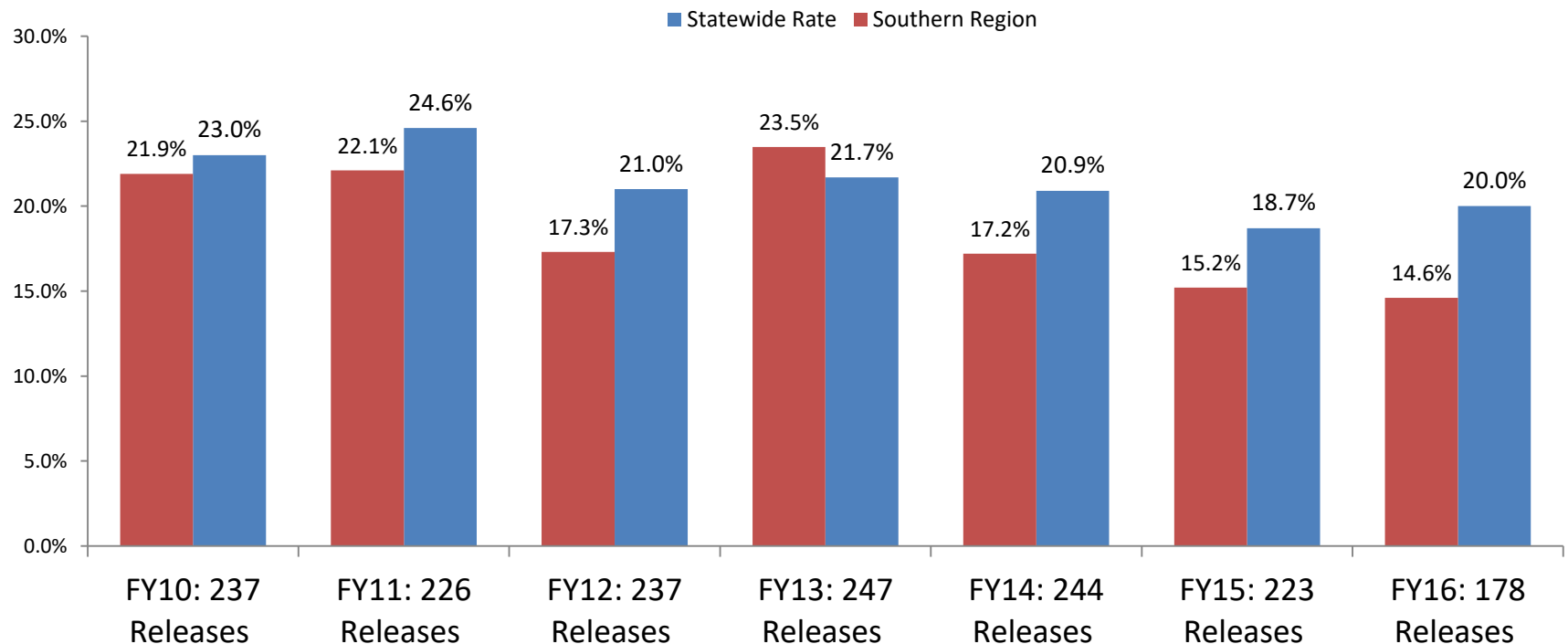
The Rate of Juveniles Committed for Violations of Probation has Declined in the Southern Region

- The rate of new commitments for Violations of Probation decreased 11 percentage points to 18% in the last year from 29% in FY 2017.



Recidivism Rates for Southern Region DJS Committed Youth Have Declined in Recent Years

- 14.6% of Southern Region youth released from committed placement in FY16 had a new offense within a year that resulted in a delinquent adjudication or criminal conviction, a slight decrease of 0.6 percentage points from FY15.
- The Statewide rate was 20.0% in FY16, an increase of 1.3 points from FY15.



Recidivism Rates for Southern Region DJS Probation Youth Have Decreased in The Past Year

- 13.4% of Southern Region youth placed on probation for the first time in FY16 had a new offense within a year that resulted in a delinquent adjudication or criminal conviction, a decrease of 4.6 points from FY15.
- The Statewide rate was 16.5% in FY16, down 1.7 points from FY15.

