

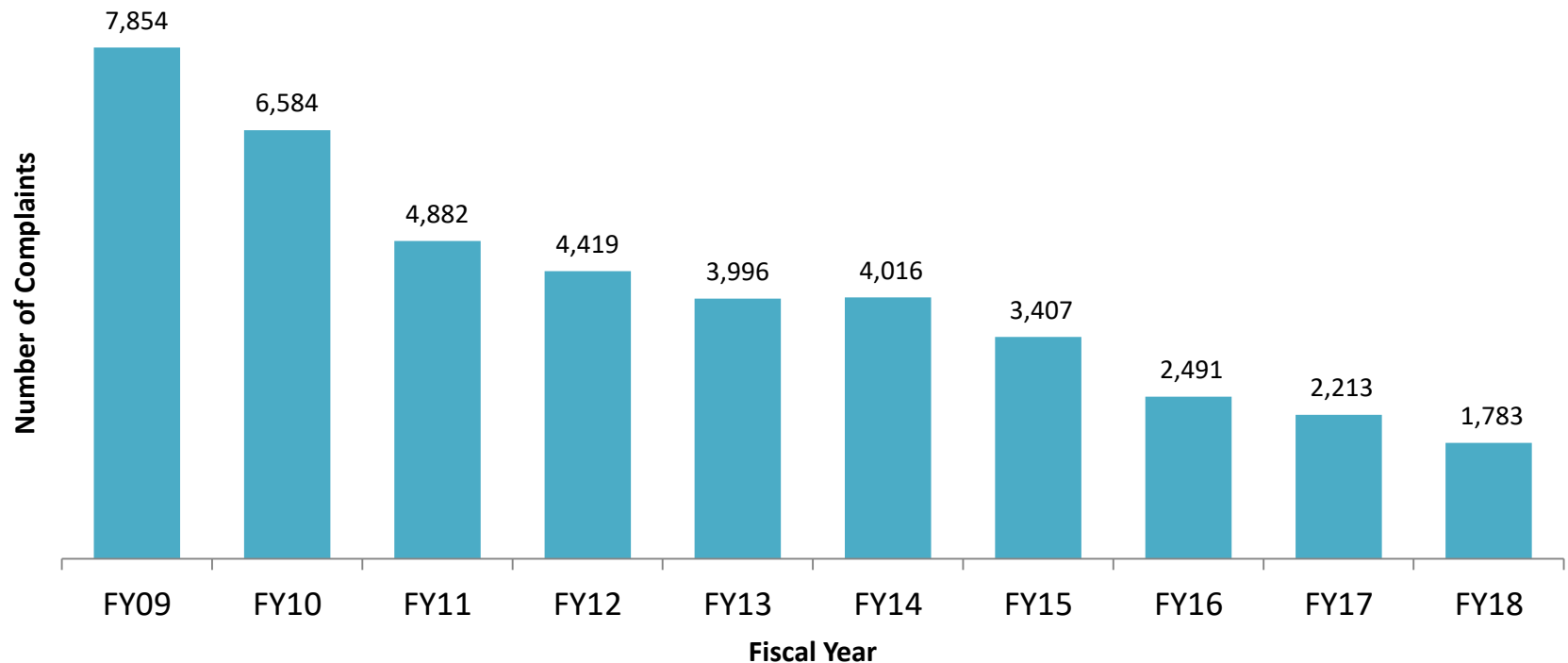


Baltimore City Juvenile Services Long Term Trends

DJS Office of Research and Evaluation, February 2019

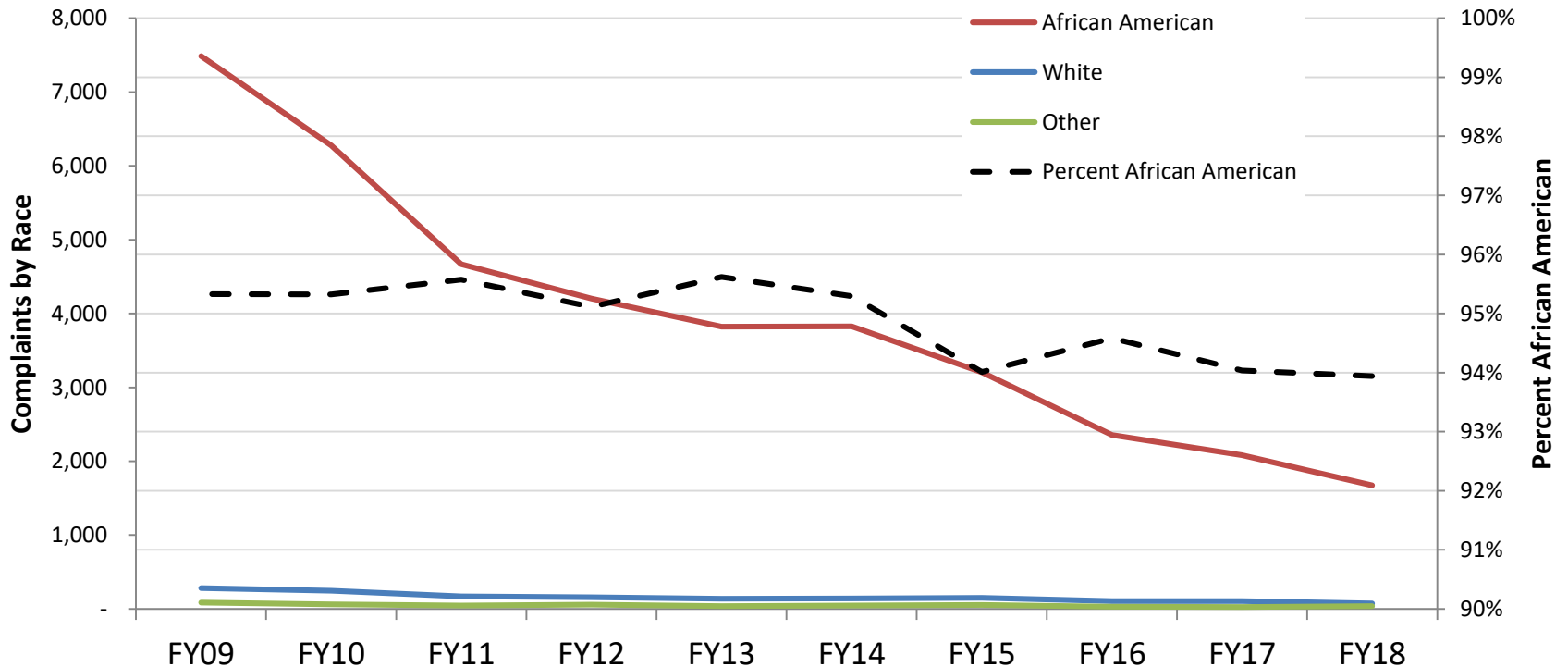
Baltimore City Juvenile Complaints Have Declined Significantly

- Baltimore City complaints referred to DJS Intake declined 77.3% in ten years.
- Statewide complaints declined 59.4% over the same period.



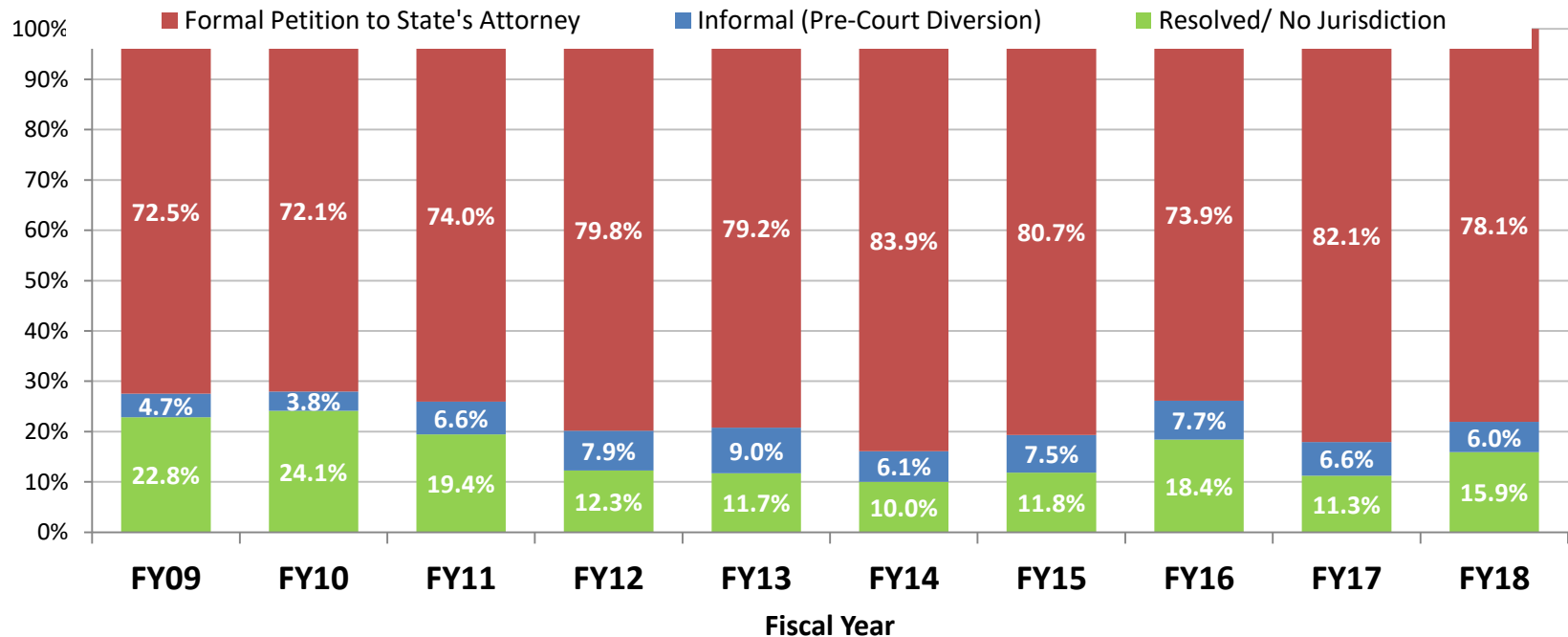
Juvenile Complaints in Baltimore City Have Declined for All Race/Ethnicities

- Complaints for Baltimore City African American youth declined 77.6%, and declined 74.5% for white youth.
- African American youth comprise 93.9% of complaints which is similar to FY09.
- African American youth comprise 71.4% of the general population.



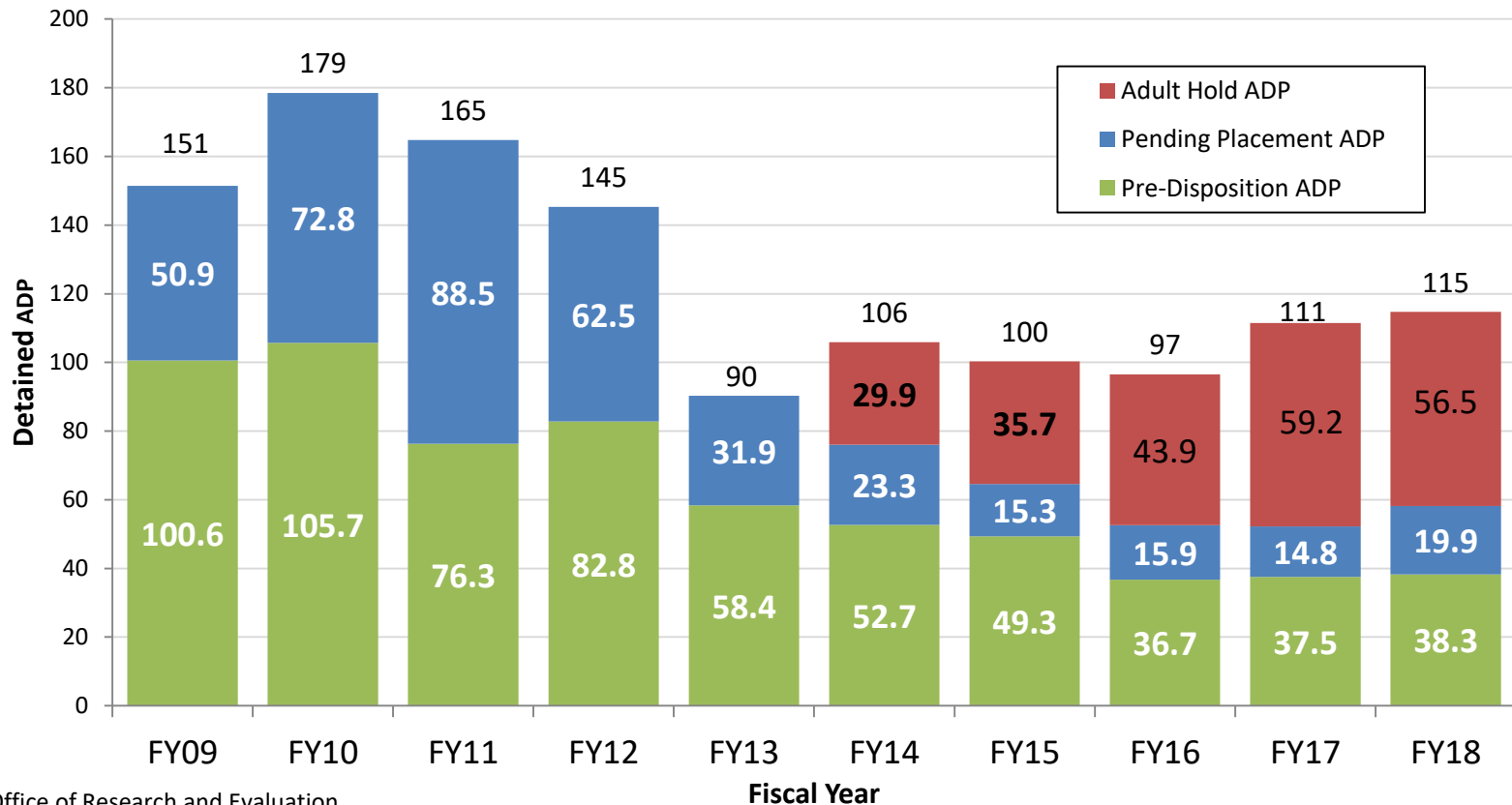
The Proportion of Baltimore City Complaints Referred to Court Decreased

- 78.1% of Baltimore City complaints were referred to court by DJS Intake in FY18, 5.6 percentage points more than in FY09. Statewide 45.0% were referred to court.
- 6.0% of Baltimore City complaints were diverted to an informal DJS pre-court case. Statewide 15.2% were diverted.



Baltimore City Detention Population Has Increased Slightly in Recent Years

- Baltimore City daily population in DJS detention declined 23.8% since FY09 to 115 in FY18. The statewide detention population declined over the same period.
- Cases detained for the Adult Court now make up 56.5% of the DJS detained population in Baltimore City.



Baltimore City Youth Population In Detention Pre-Disposition Has Declined Significantly

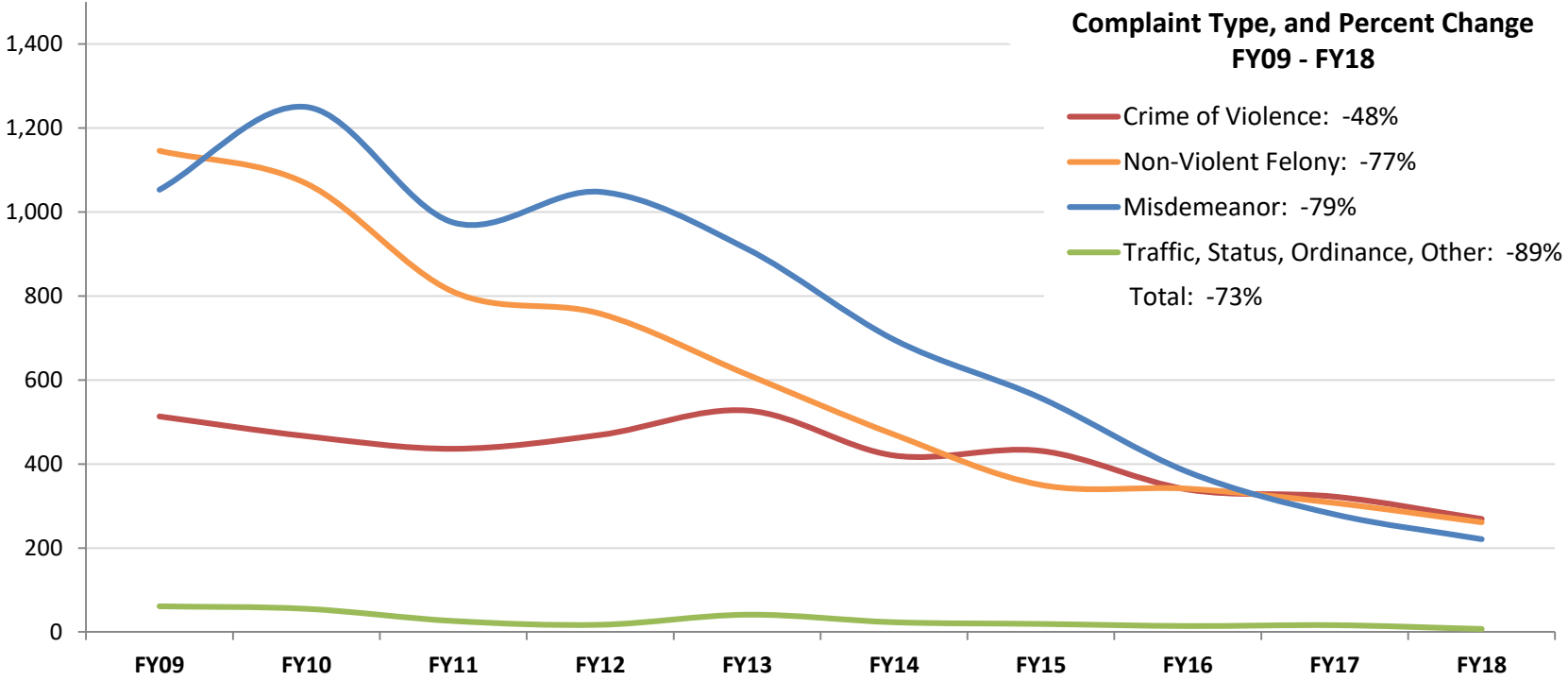
- The Baltimore City juvenile pre-dispositional detained population declined 61.9% in 10 years to 38.3 youth in FY 2018.



Baltimore City's Pre-Disposition Detention Placements Have Decreased for All Complaint Types

- Youth detained pending disposition for misdemeanors has decreased 79.0% over 10 years.
- Youth detained pending disposition for crimes of violence has decreased 47.6% over 10 years.

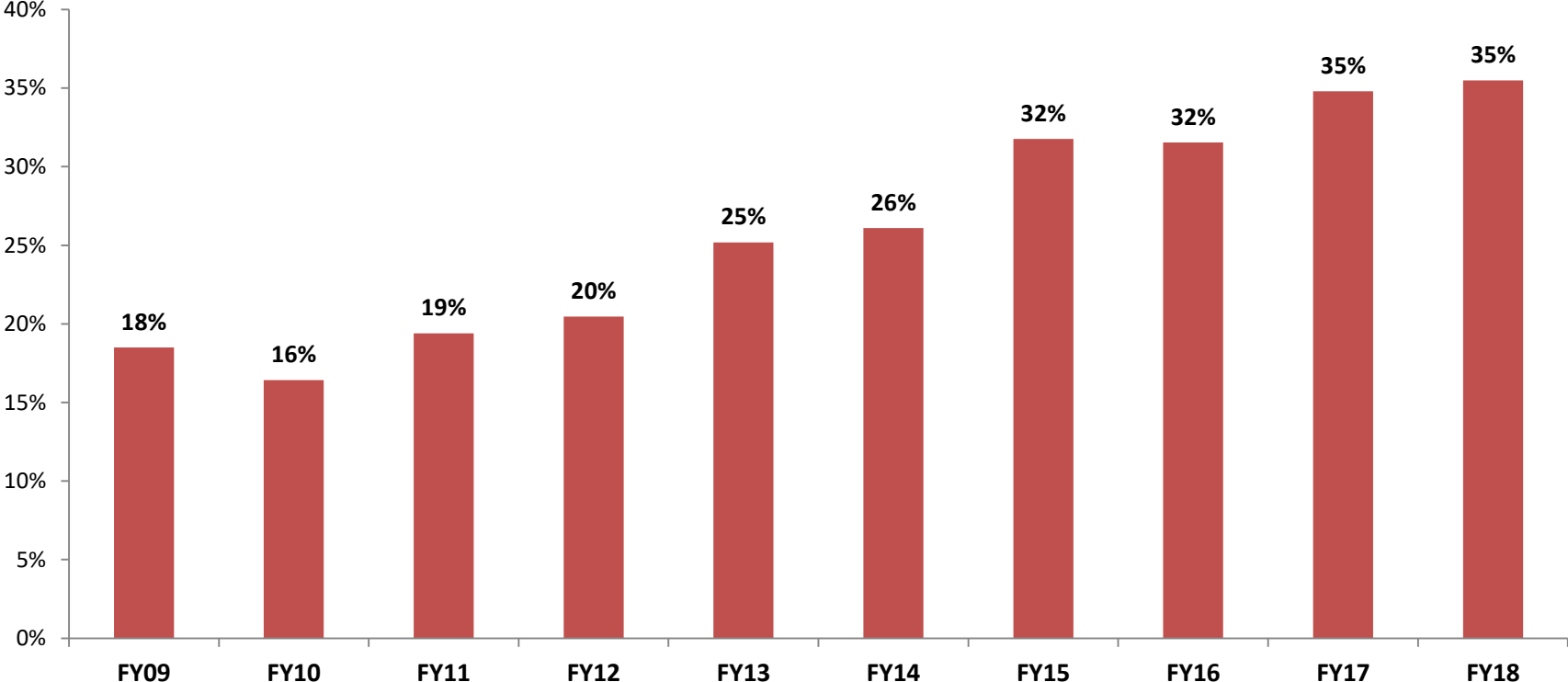
Pre-D Detention Admissions by Complaint Type, FY09 - FY18



Crimes of Violence Make Up an Increasing Percent of Detention Placement Offenses

- The proportion of youth detained pre-disposition for Crimes of Violence complaints has nearly doubled, from 18% to 35%, over 10 years.

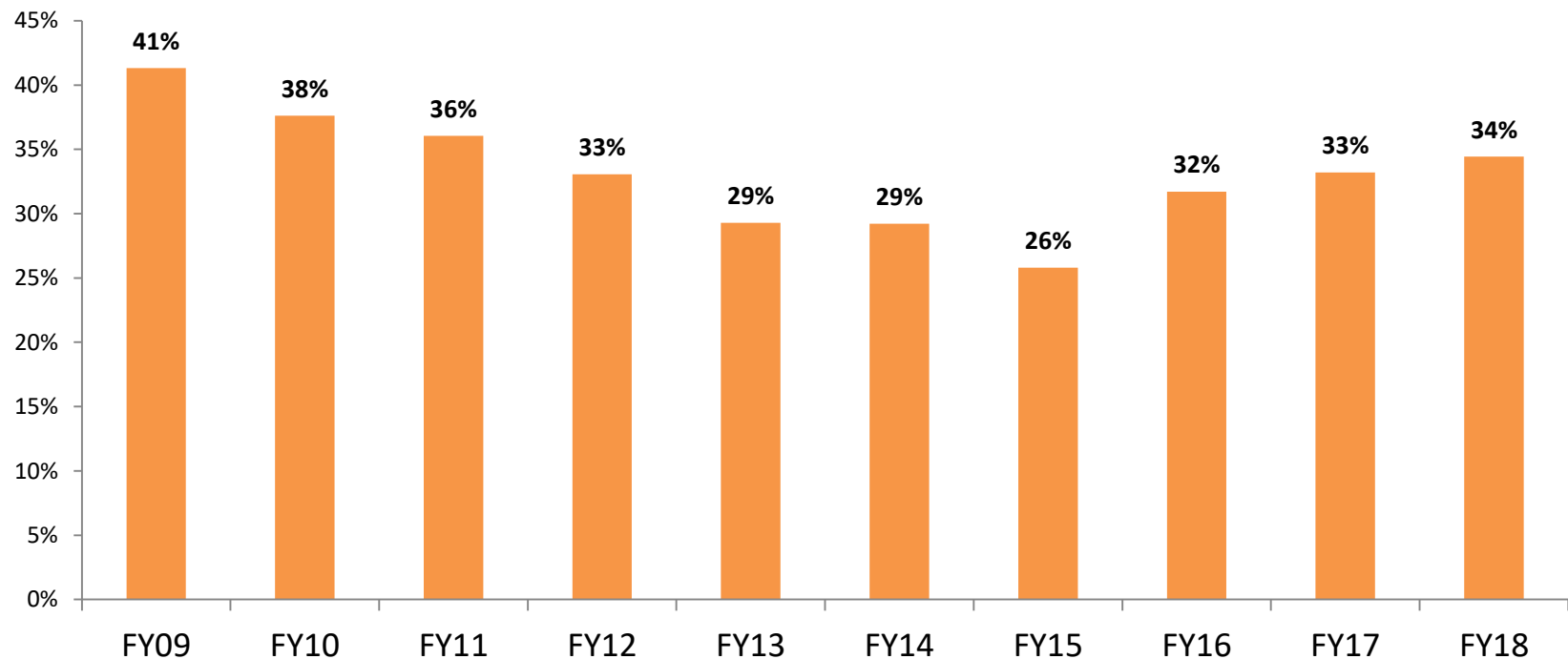
Proportion of Pre-D Detention Admissions For Crimes of Violence, FY09 - FY18



Detention Placements for Non-Violent Felonies has Remained Flat in Recent Years

- The percent of youth detained pre-disposition for Non-Violent Felony complaints has decreased 7 percentage points over 10 years.
- The detained population is increasingly comprised of youth with violent crimes complaints.

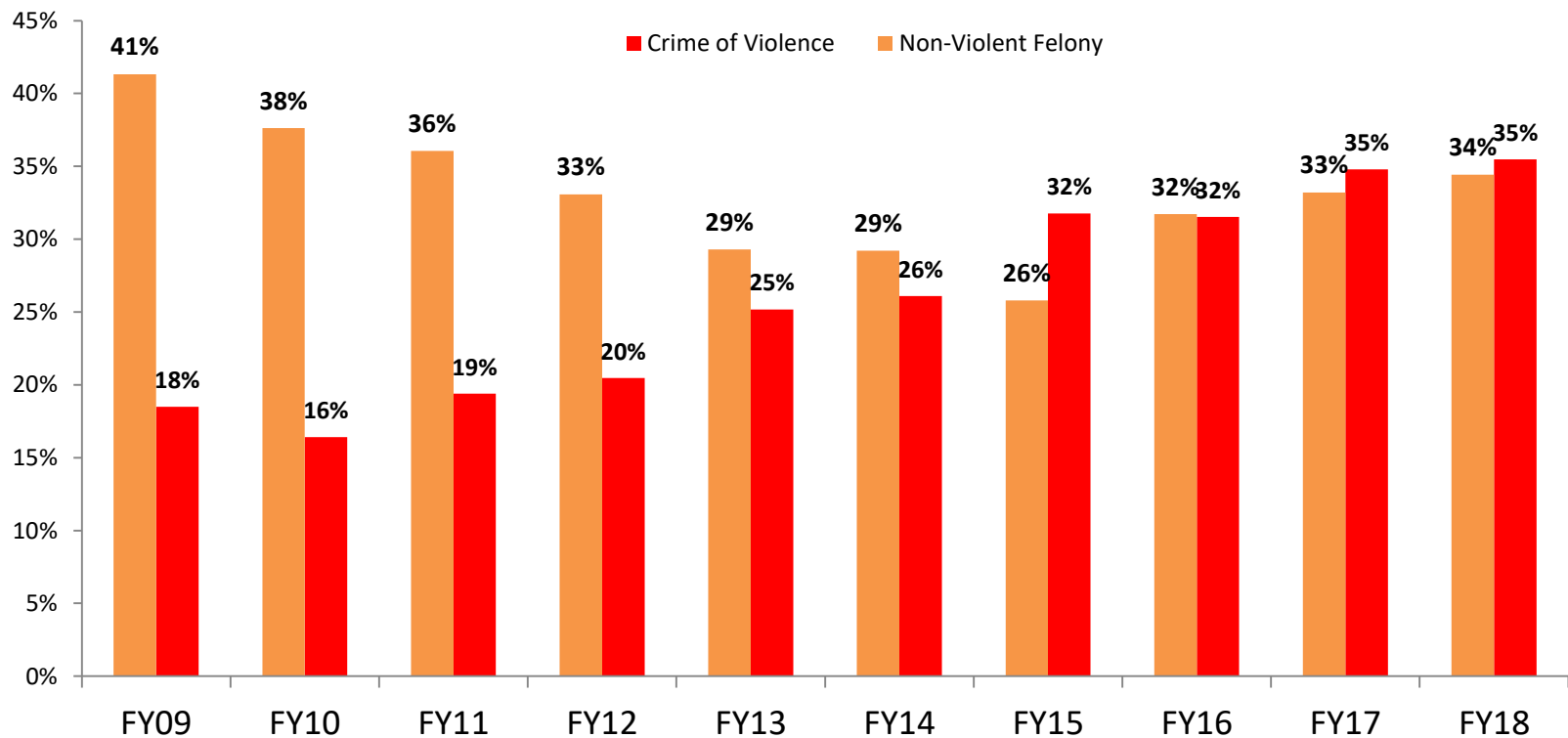
Proportion of Pre-D Detention Admissions For Non-Violent Felonies, FY09 - FY18



Baltimore City's Pre-D Detention Population

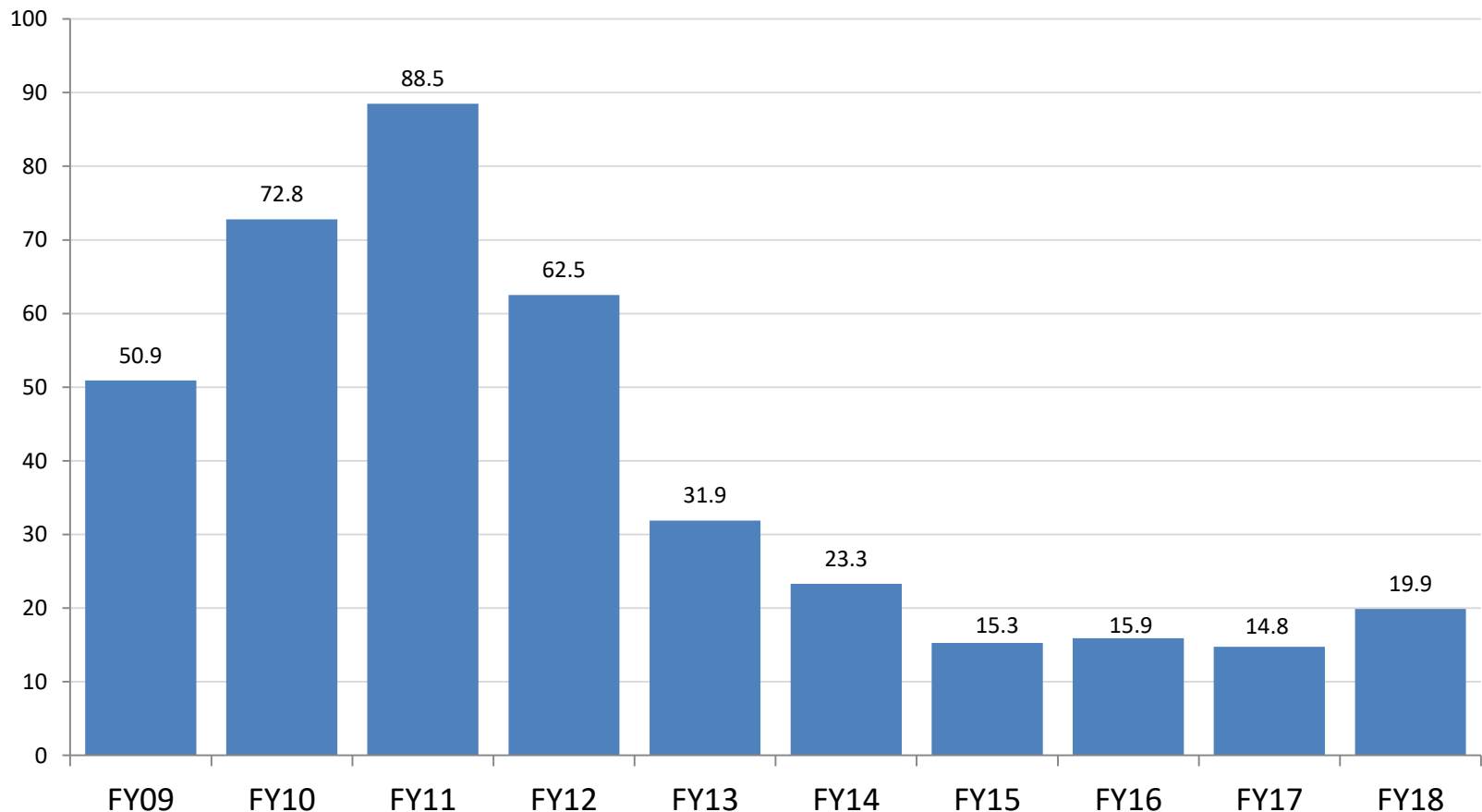
- Youth detained pre-disposition for Crimes of Violence increased 17 percentage points over 10 years.
- Pre-disposition for non-violent felonies decreased 7 percentage points over 10 years.

Proportion of Pre-D Detention Admissions For Non-Violent Felonies, FY09 - FY18



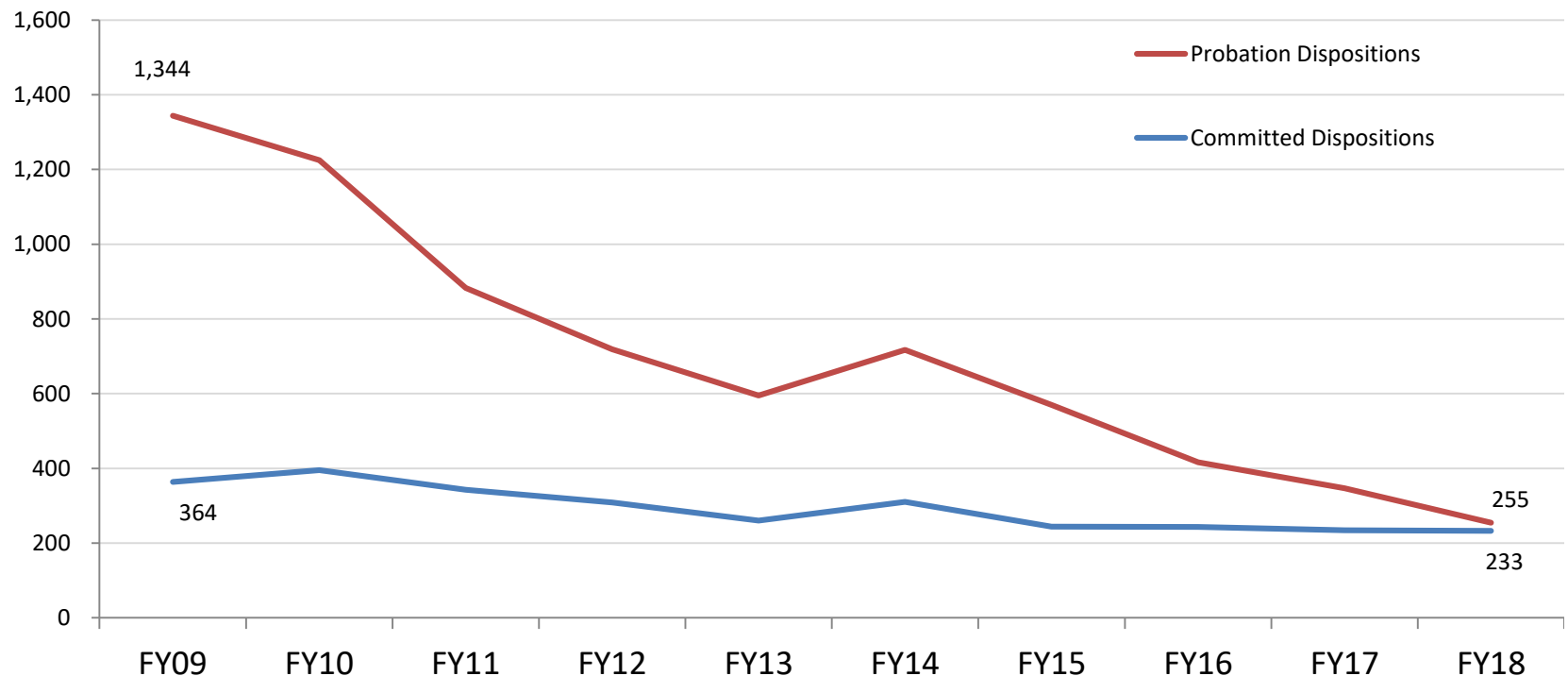
Baltimore City Youth In Detention Pending a Committed Placement Has Declined Dramatically

- Juvenile court pending placement population declined 60.9% in ten years to 19.9 youth in FY 2018.



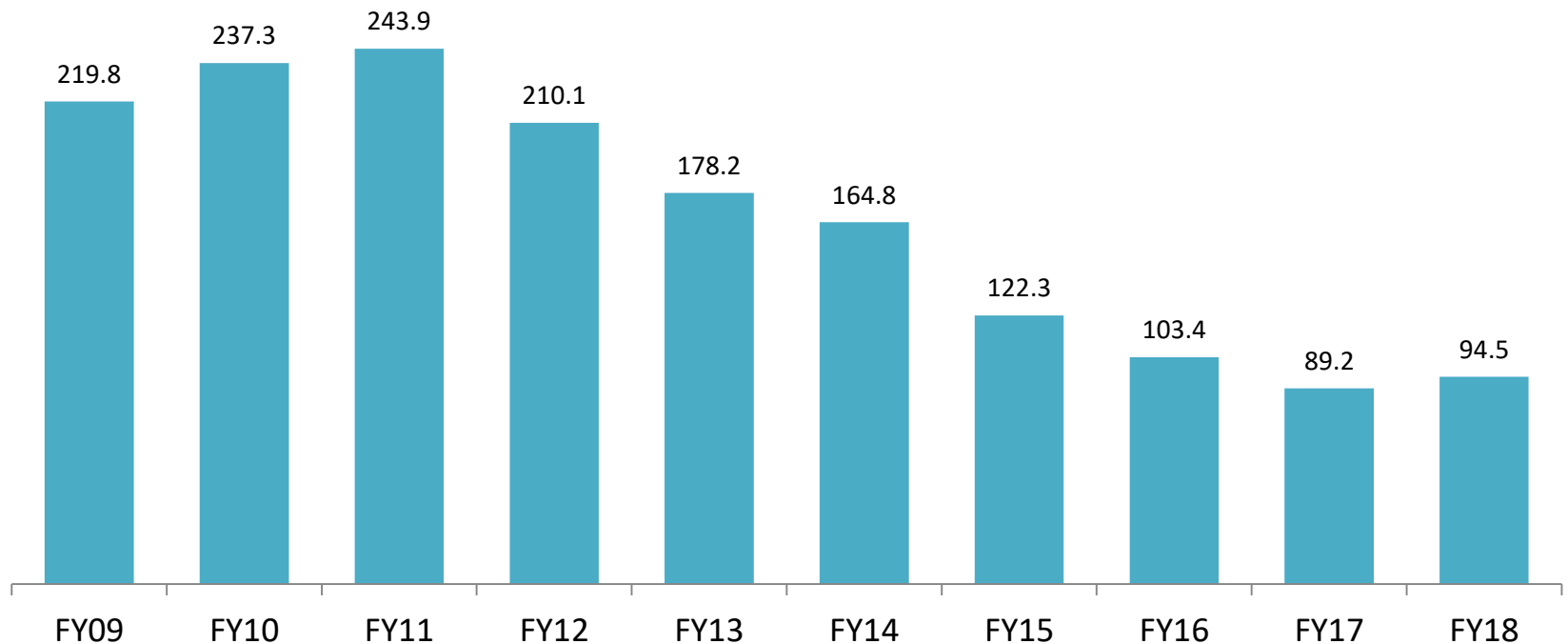
Juvenile Probation and Commitment Orders Have Declined

- Baltimore City Juvenile probation orders declined 81.0% in ten years. Statewide probation orders declined 58.6% over the same period.
- Baltimore City juvenile commitments declined 36.0% in ten years. Statewide commitments declined 52.8% over the same period.



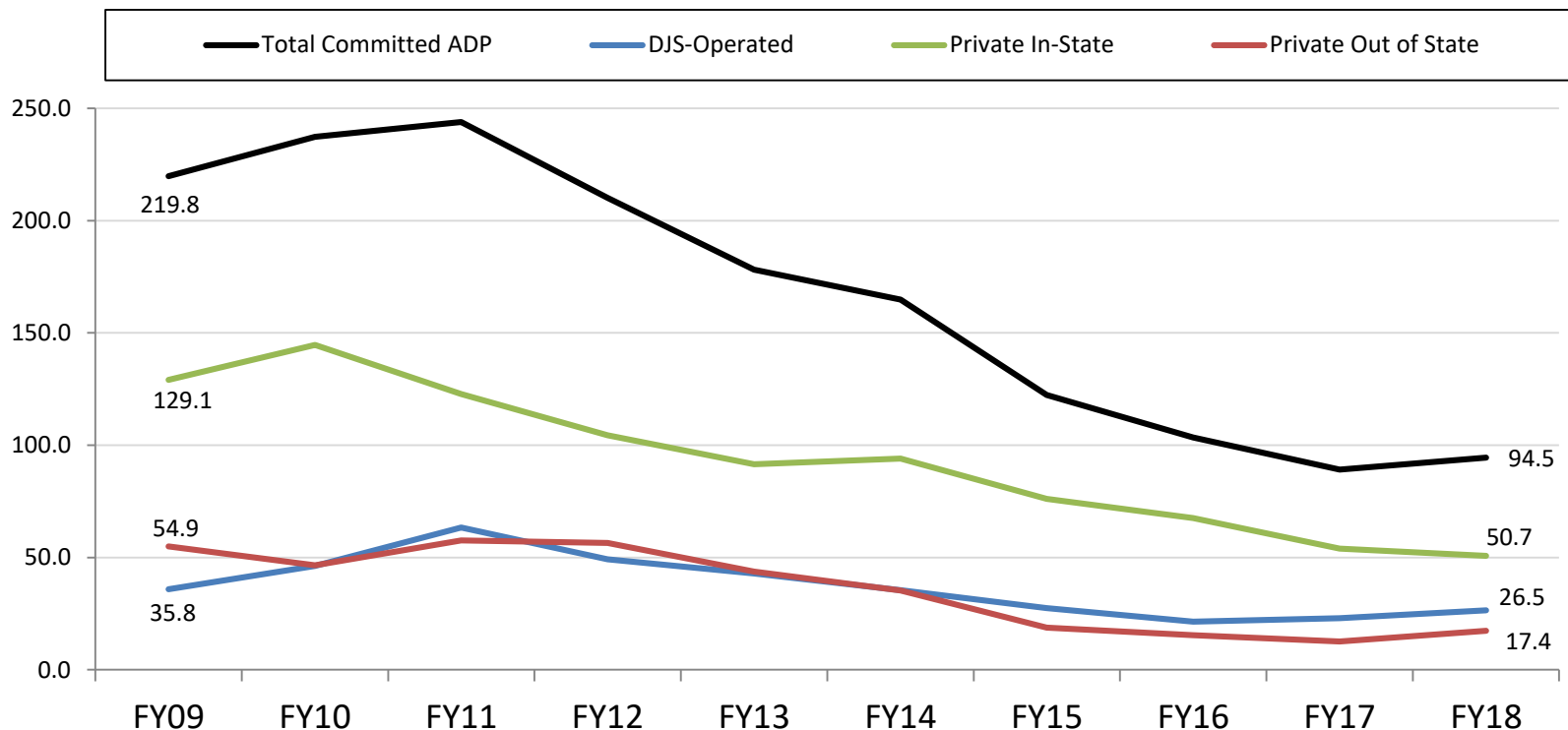
Average Committed Out-of-Home Population Has Declined Significantly in Baltimore City

- The overall daily population of Baltimore City youth committed by the juvenile court to out of home placement declined 57.0% over ten years, from 219.5 in FY09 to 94.5 in FY18.
- Statewide average committed population declined 55.5% over the same period.



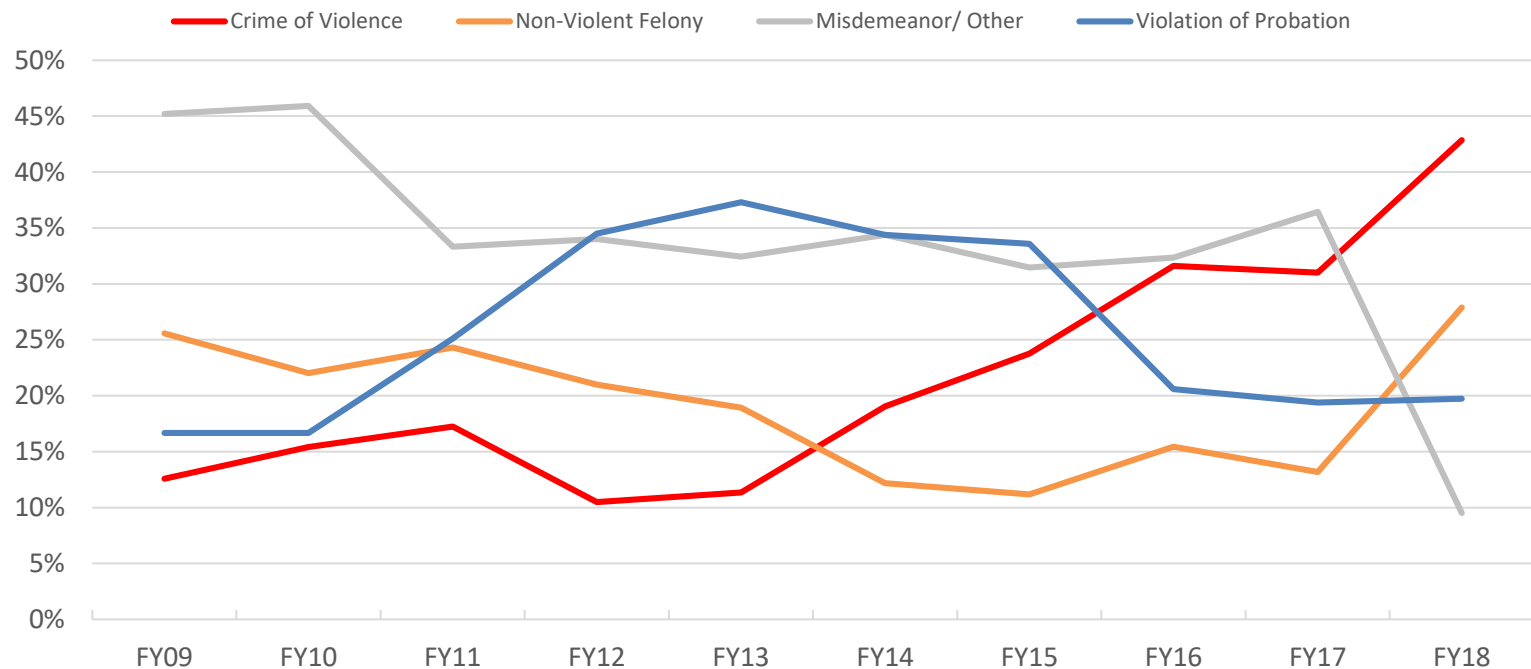
Baltimore City's Committed Youth Population Has Decreased for All Facility Types

- Overall committed out-of-home population has declined 57.0% since FY09, and over 61.3% since the high of 243.9 in FY11.
- DJS-Operated ADP decreased 26.0%, and Private In-State has declined 60.7% since FY09.
- Out of State committed average population declined 68.3% since FY09.



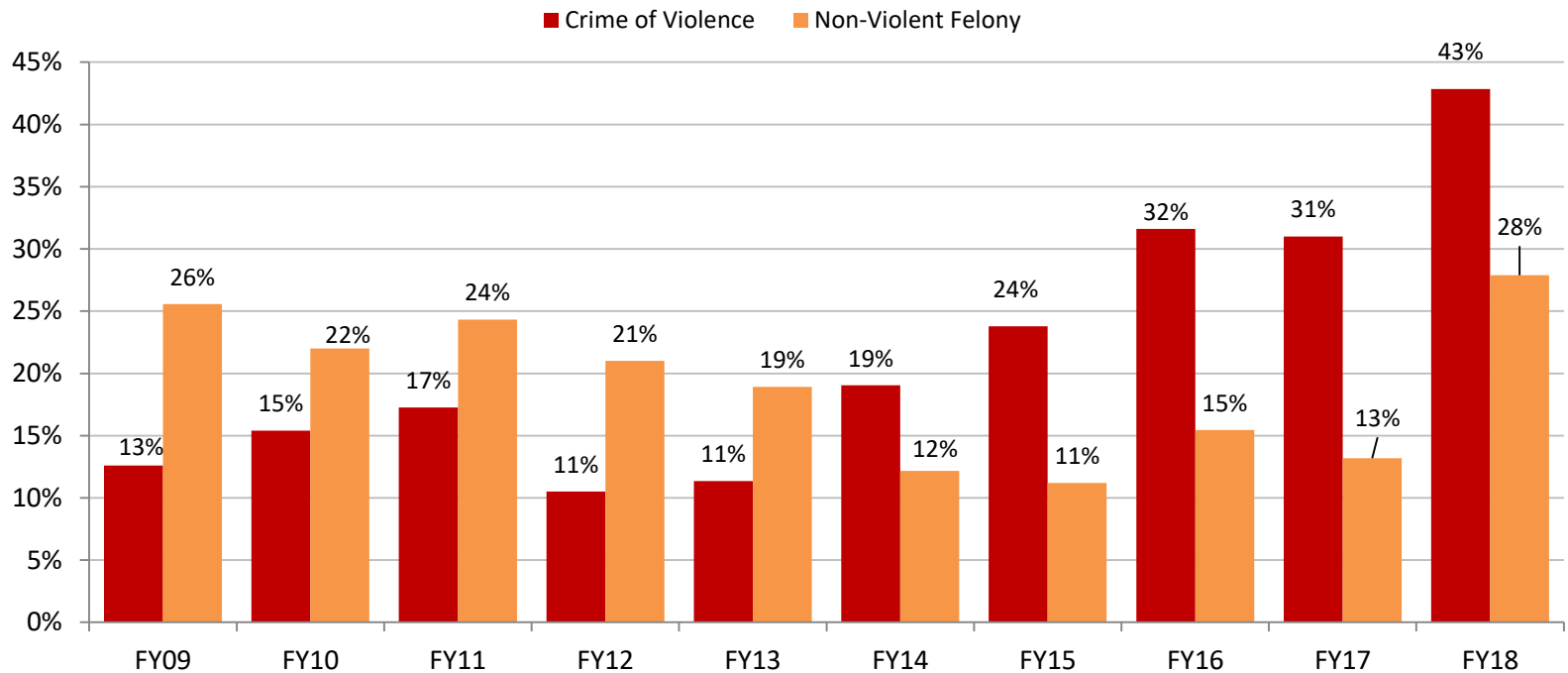
The Rate of Juveniles Committed for Low-Level Offenses Has Declined

- The proportion of new commitments for crimes of violence increased 30 percentage points over 10 years.
- The proportion of new commitments for non-violent felony increased 15 percentage points in the last year.



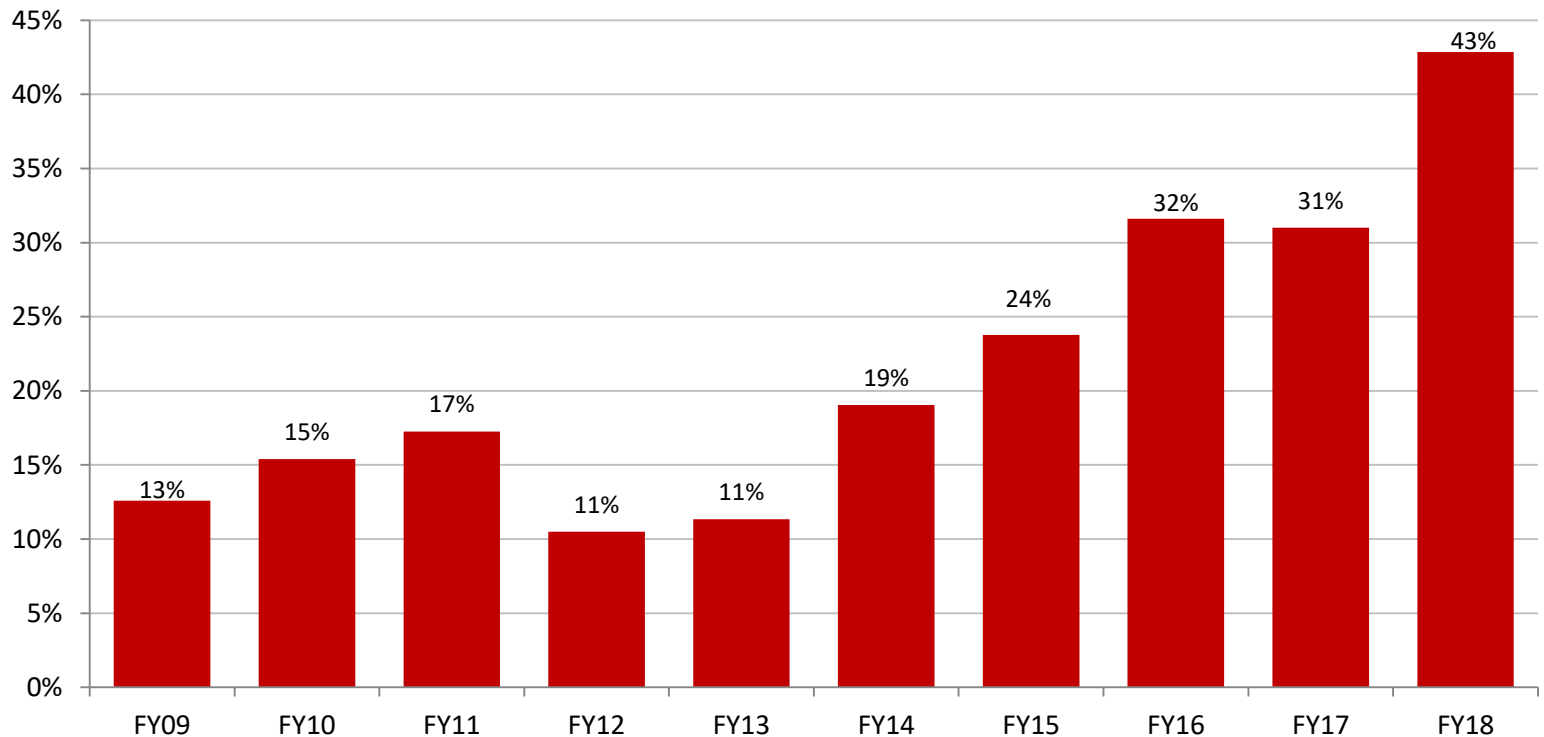
The Rate of Juveniles Committed for Crimes of Violence has Increased in Baltimore City

- Crimes of Violence made up more than a third (43%) of new commitments in FY 2018.
- The rate of juveniles committed for Non-Violent Felonies increased 15 percentage points in FY 2018.



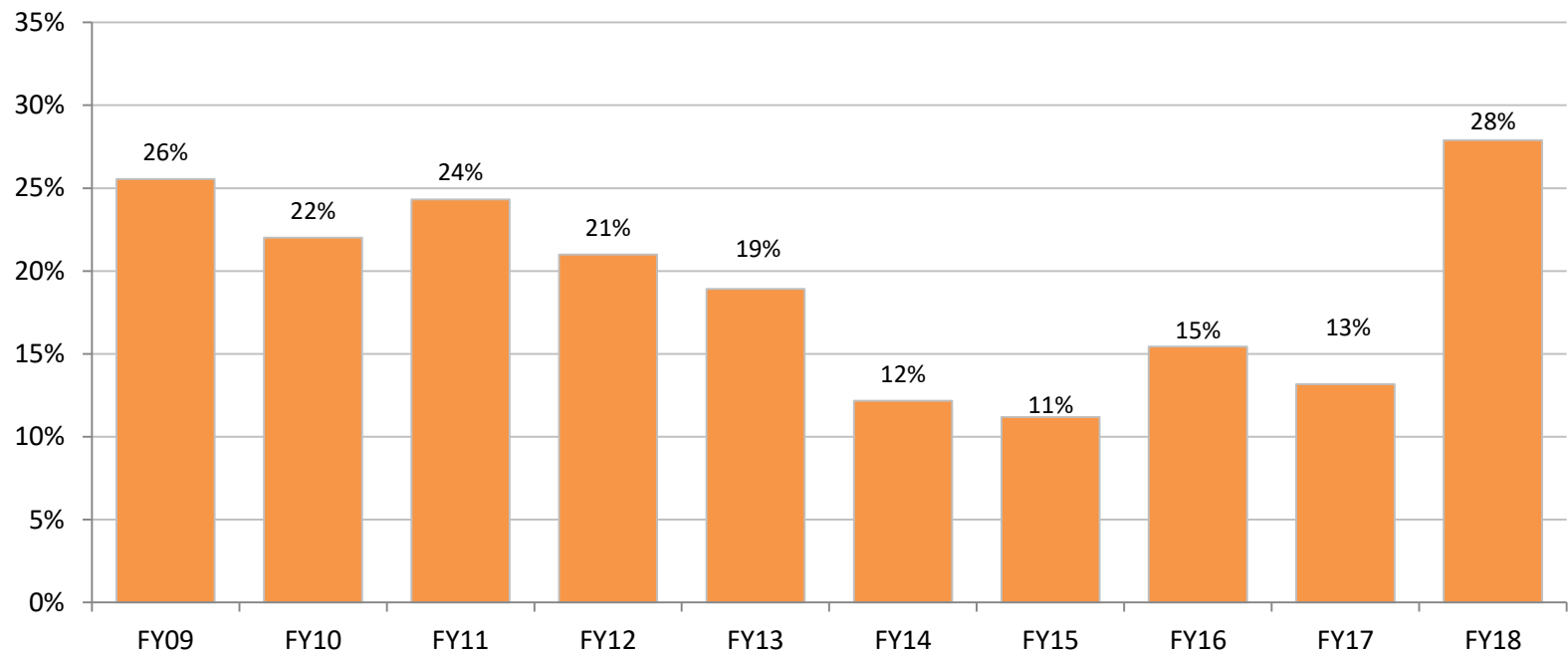
The Rate of Juveniles Committed for Crimes of Violence has Increased in Baltimore City

- Crimes of Violence made up more than a third (43%) of new commitments in FY 2018.



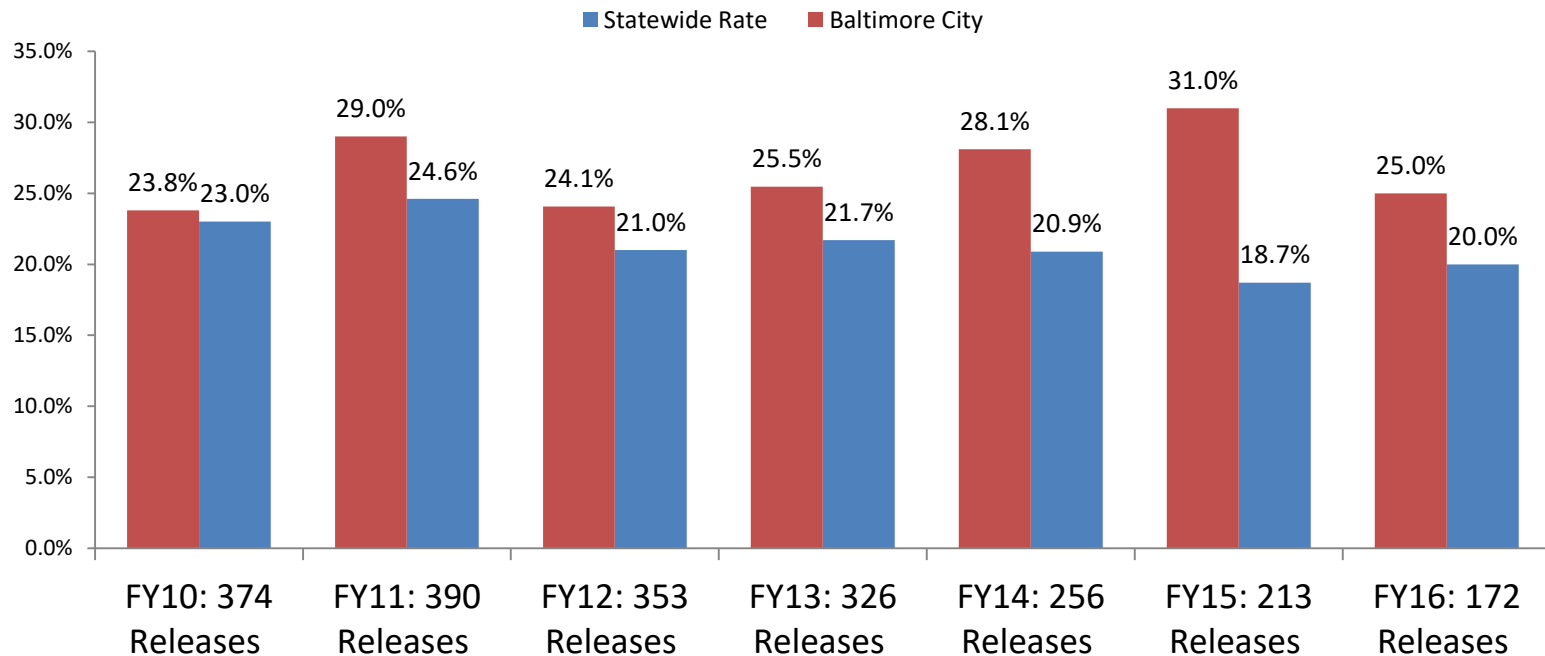
The Rate of Juveniles Committed for Non-Violent Felonies has Increased in Baltimore City

- Non-violent felonies increased 15 percentage point since last year.



Recidivism Rates for Baltimore City DJS Committed Youth Has Decreased in Recent Years

- 25.0% of Baltimore City youth released from committed placement in FY16 had a new offense within 12 months that resulted in a delinquent adjudication or criminal conviction, a decrease of 6.0 points from FY15.
- The Statewide rate was 20.0% in FY16, up 1.3 percentage points from FY15.



Recidivism Rates for Baltimore City DJS Probation Youth Have Increased in The Past Year

- 26.9% of Baltimore City youth placed on probation for the first time in FY16 had a new offense within 12-months that resulted in a delinquent adjudication or criminal conviction, an increase of 6.6 points from FY15.
- The Statewide rate was 16.5% in FY16, down 1.7 points from FY15.

