

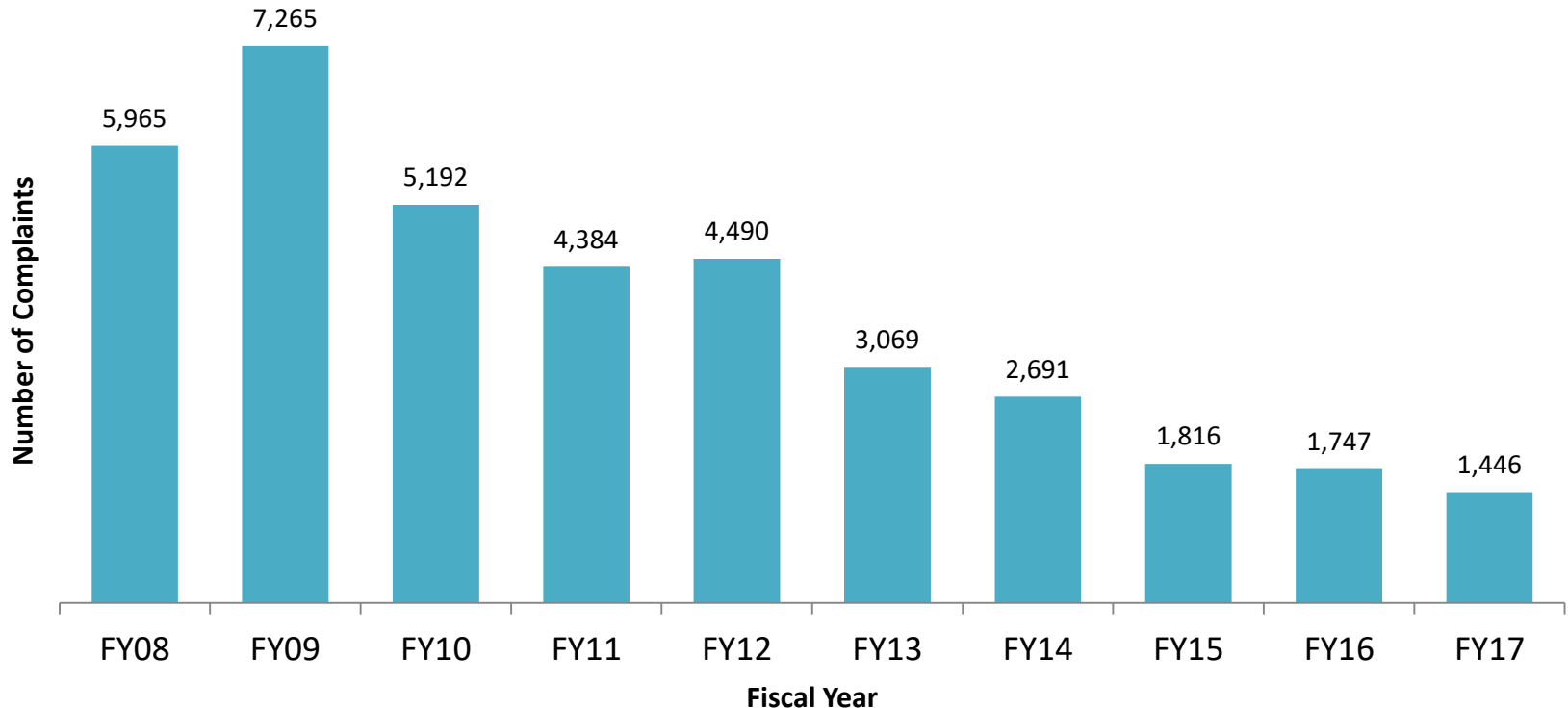


Prince George's County Juvenile Services Long Term Trends

DJS Office of Research and Evaluation, January 2018

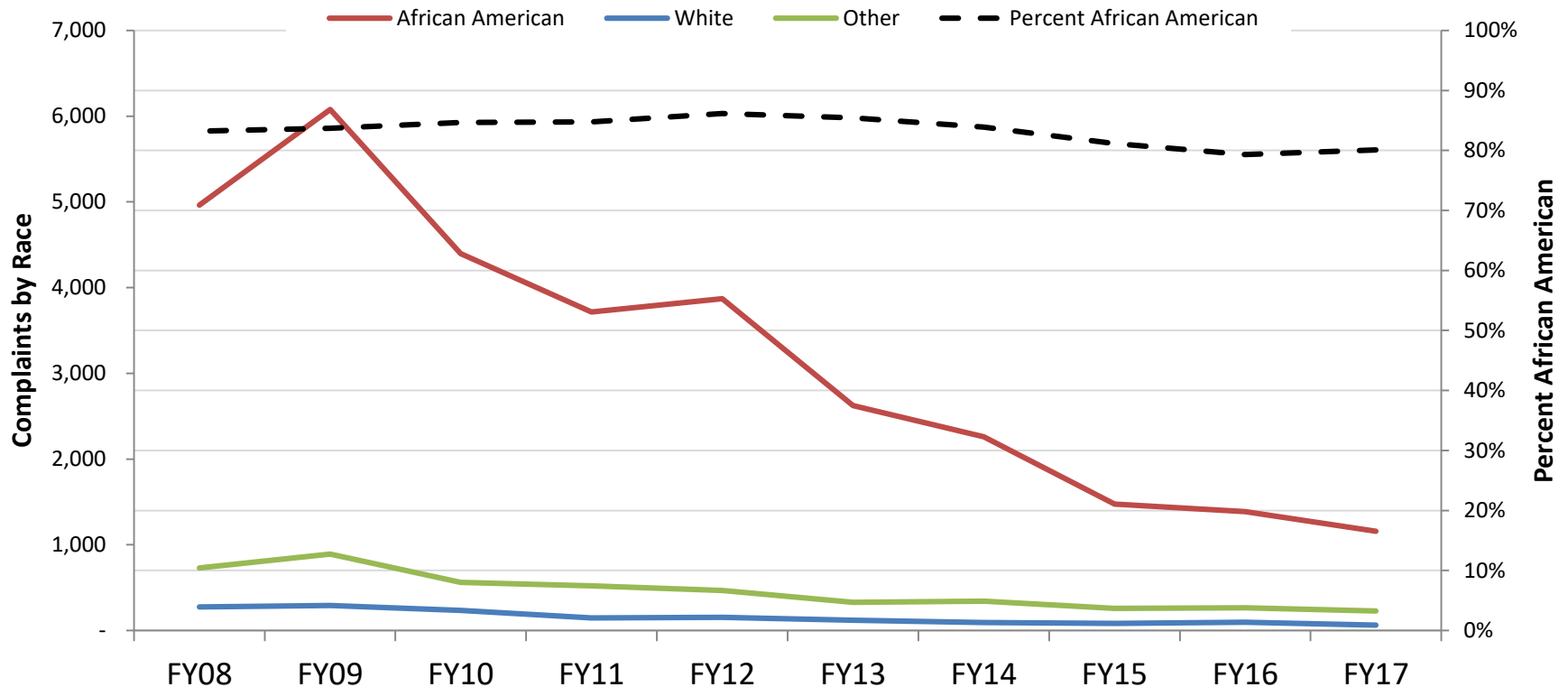
Prince George's County Juvenile Complaints Have Declined Significantly

- Prince George's County complaints referred to DJS Intake declined 75.8% in ten years.
- Statewide complaints declined 57.9% over the same period.



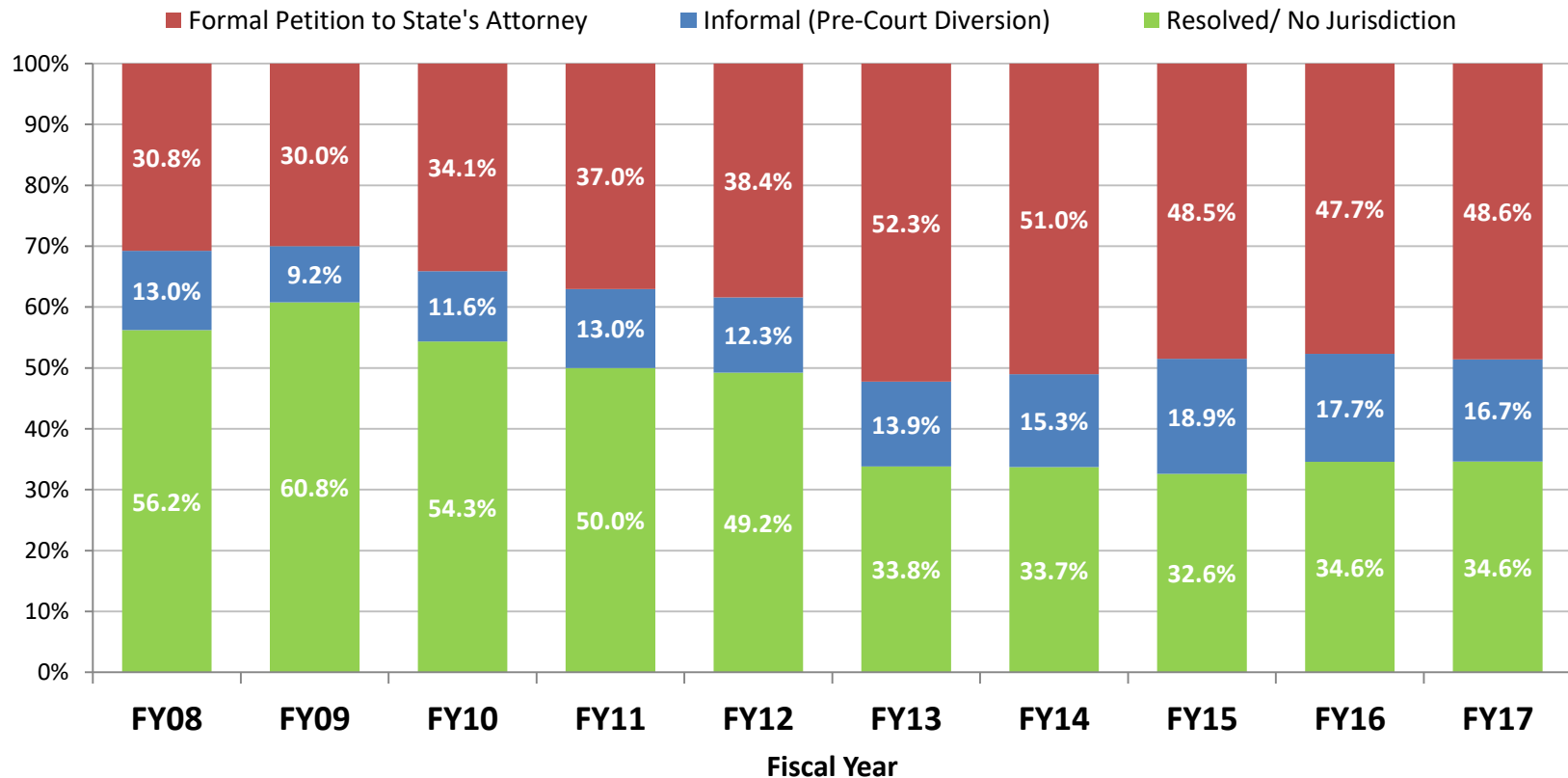
Juvenile Complaints in Prince George's County Have Declined for All Race/Ethnicities Since FY08

- Complaints for African American youth decreased 76.7%, and declined 77.3% for white youth.
- African American youth comprise 80.0% of complaints, down from 83.0% in FY08.
- African American youth comprise 61.4% of the general population.



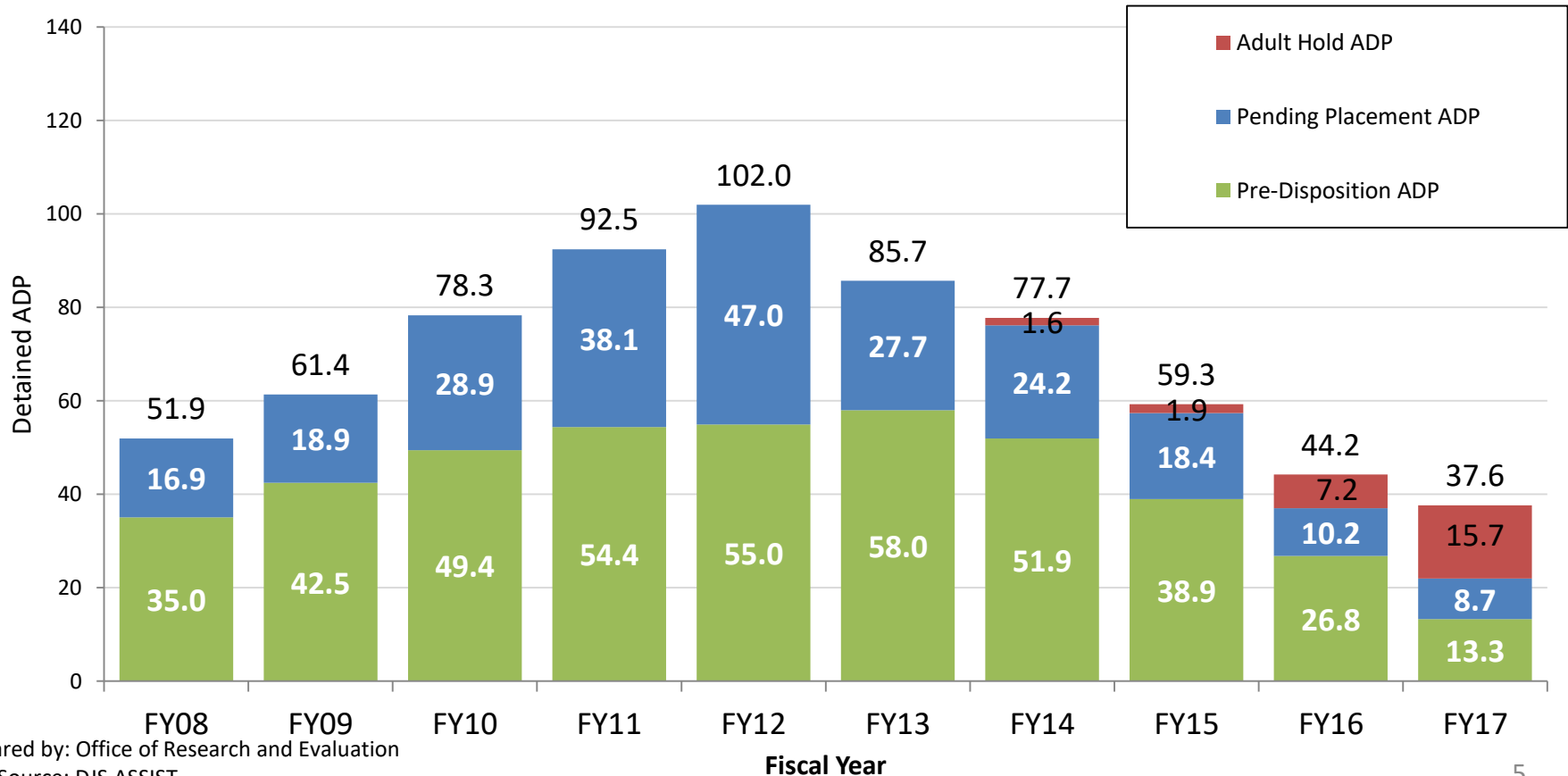
The Percent of Cases Referred to Juvenile Court by Prince George's County has Declined Over the Past Two Years

- 48.6.0% of Prince George's County complaints were referred to court by DJS Intake in FY17, 17.8% more than in FY08. Statewide 46.7% were referred to court.
- 16.7% of Prince George's County complaints were diverted to an informal DJS pre-court case. Statewide 14.6% were diverted.



Prince George's County Detention Population Has Decline Significantly

- Prince George's County daily population in DJS detention declined 26.9% in ten years, to 37.6 in FY17. The statewide population declined 27.7% over the same period.
- Pending Placement population declined 48.5% in ten years.
- Cases detained for the Adult Court now make up 41.8% of the DJS detained population in Prince George's County.



Prince George's County Youth Population In Detention

Pre-Disposition Has Declined Significantly

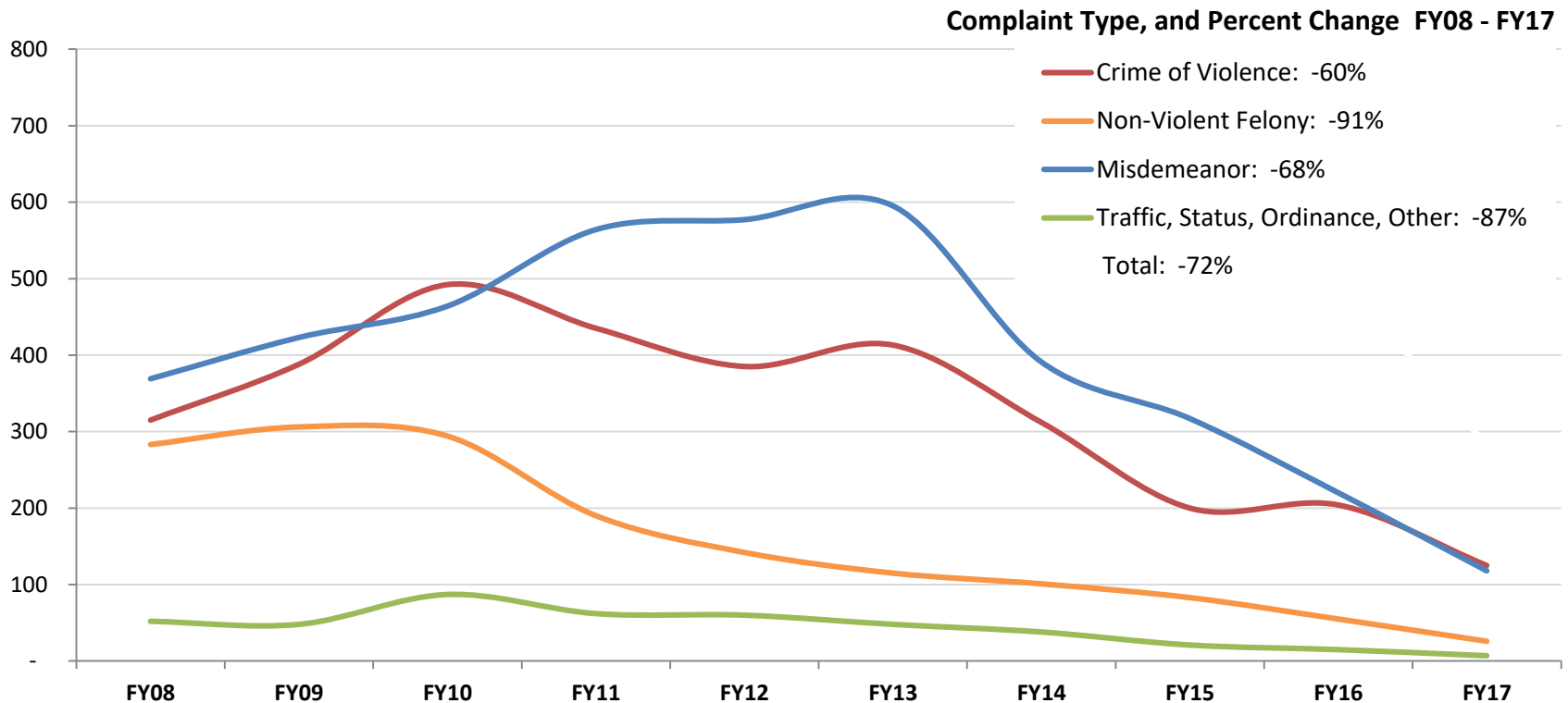
- The Prince George's County juvenile pre-dispositional detained population declined 62.0% in ten years to 13 youth in FY 2017.



Prince George's County Pre-Disposition Detention Placements Have Decreased for Most Complaint Types

- Youth detained pending disposition for misdemeanors has decreased 68.0% over ten years.
- Youth detained pending disposition for crimes of violence has decreased 60.3% over ten years.

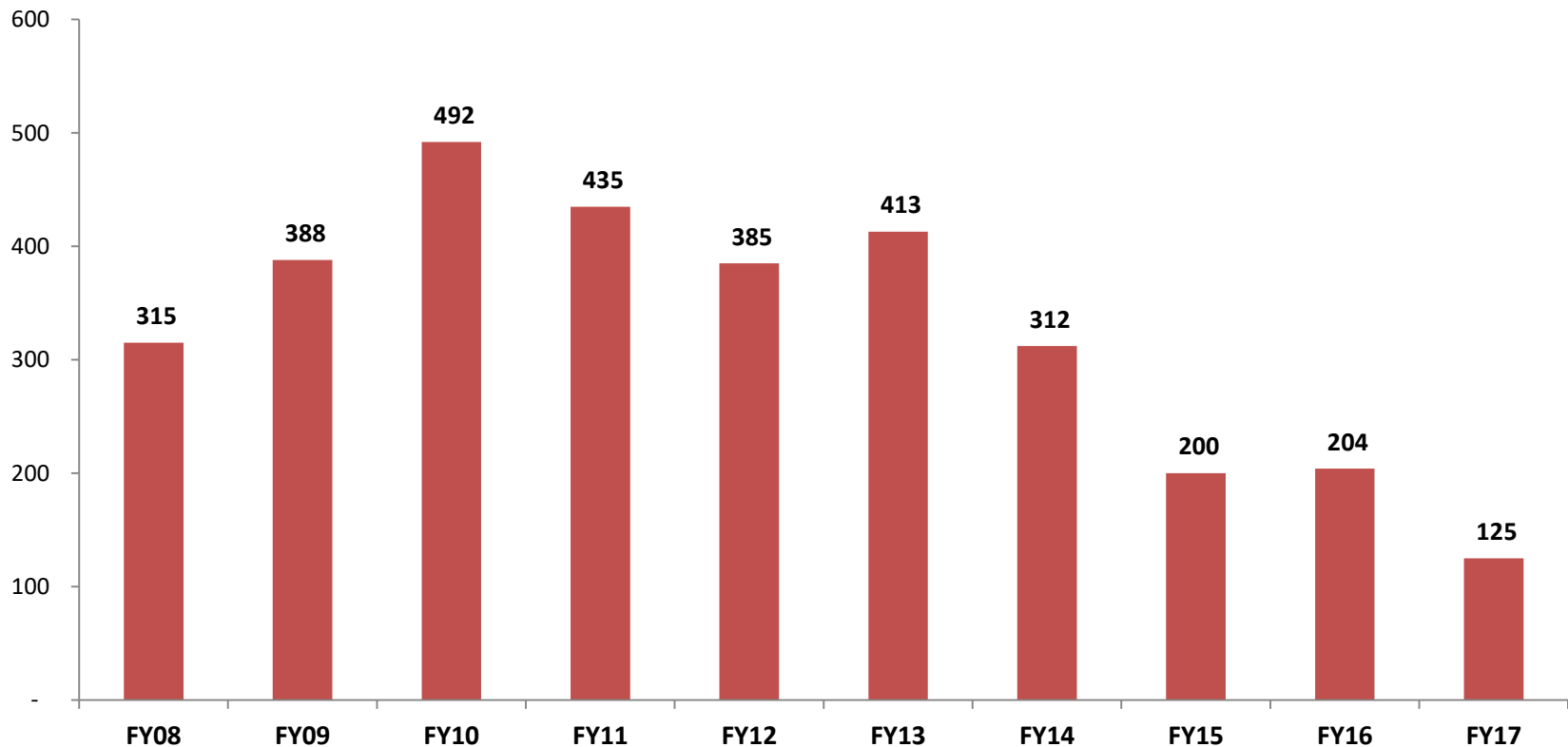
Pre-D Detention Admissions by Complaint Type, FY08 - FY17



Crimes of Violence Make Up an Increasing Proportion of Detention Placement Offenses

- The proportion of youth detained pre-disposition for Crimes of Violence complaints has decreased 60.3 percentage points over ten years.
- The detained population is increasingly comprised of youth with violent crimes complaints.

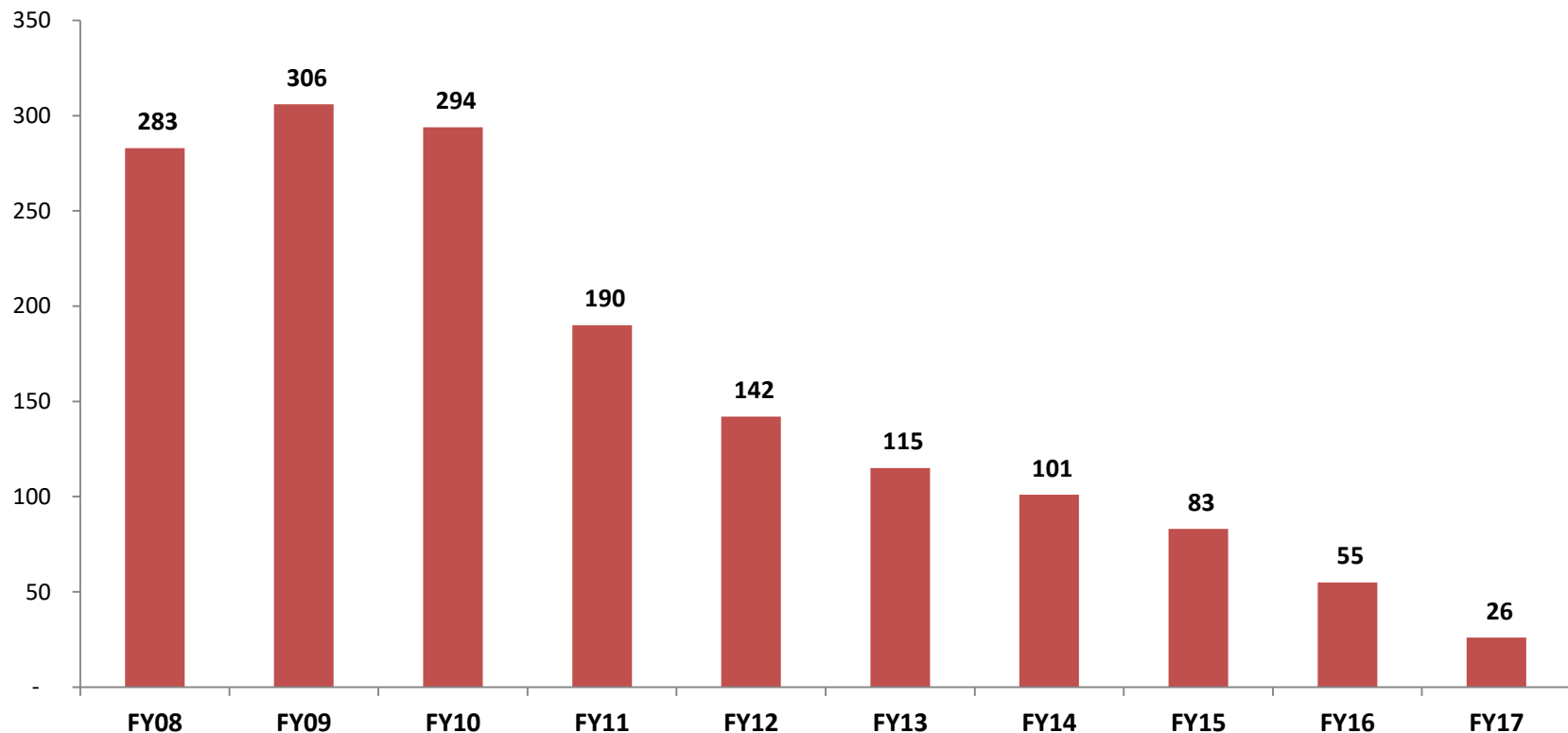
Proportion of Pre-D Detention Admissions For Crimes of Violence, FY08 - FY17



Detention Placements for Non-Violent Felonies are Declining

- The proportion of youth detained pre-disposition for Non-Violent Felony complaints has decreased 90.8 percentage points over ten years.
- The detained population is increasingly comprised of youth with violent crimes complaints.

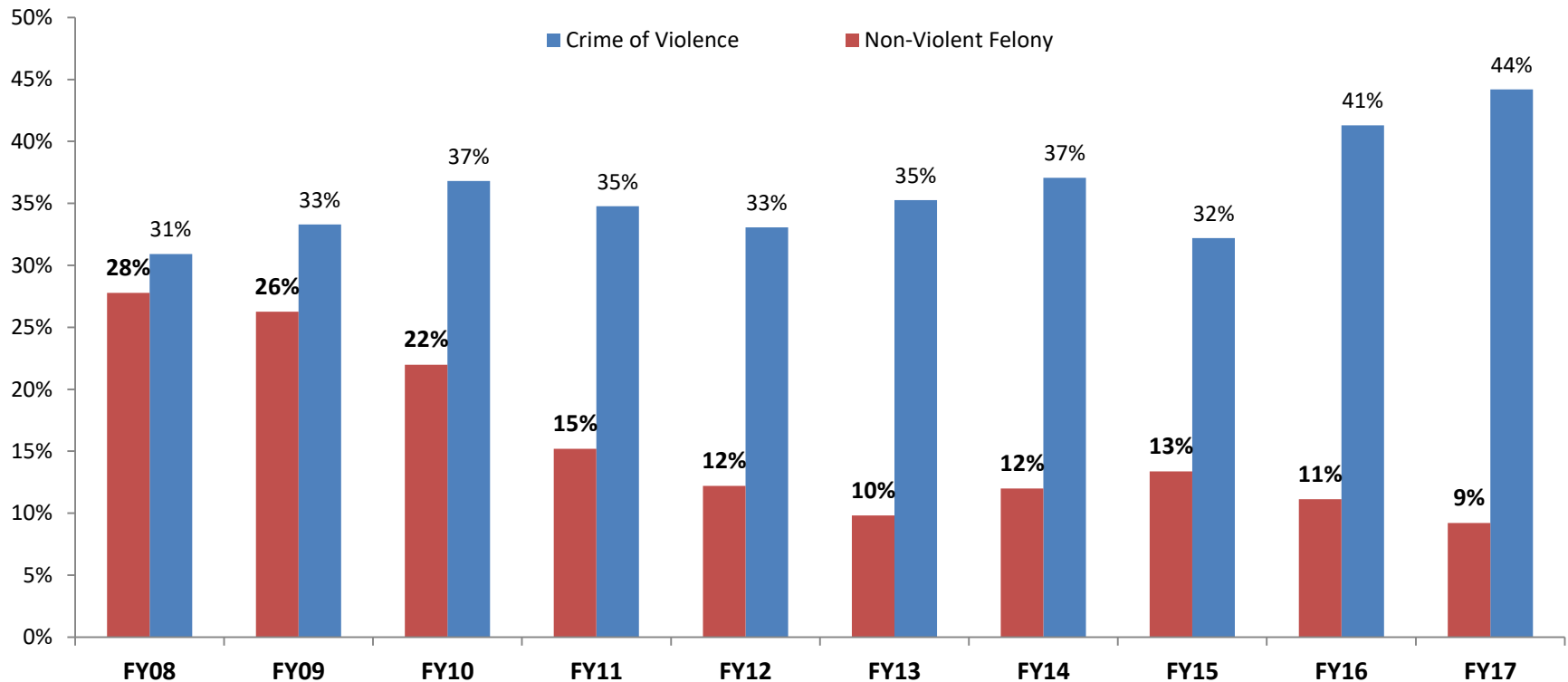
Proportion of Pre-D Detention Admissions For Crimes of Violence, FY08 - FY17



Prince George's County Pre-D Detention Population

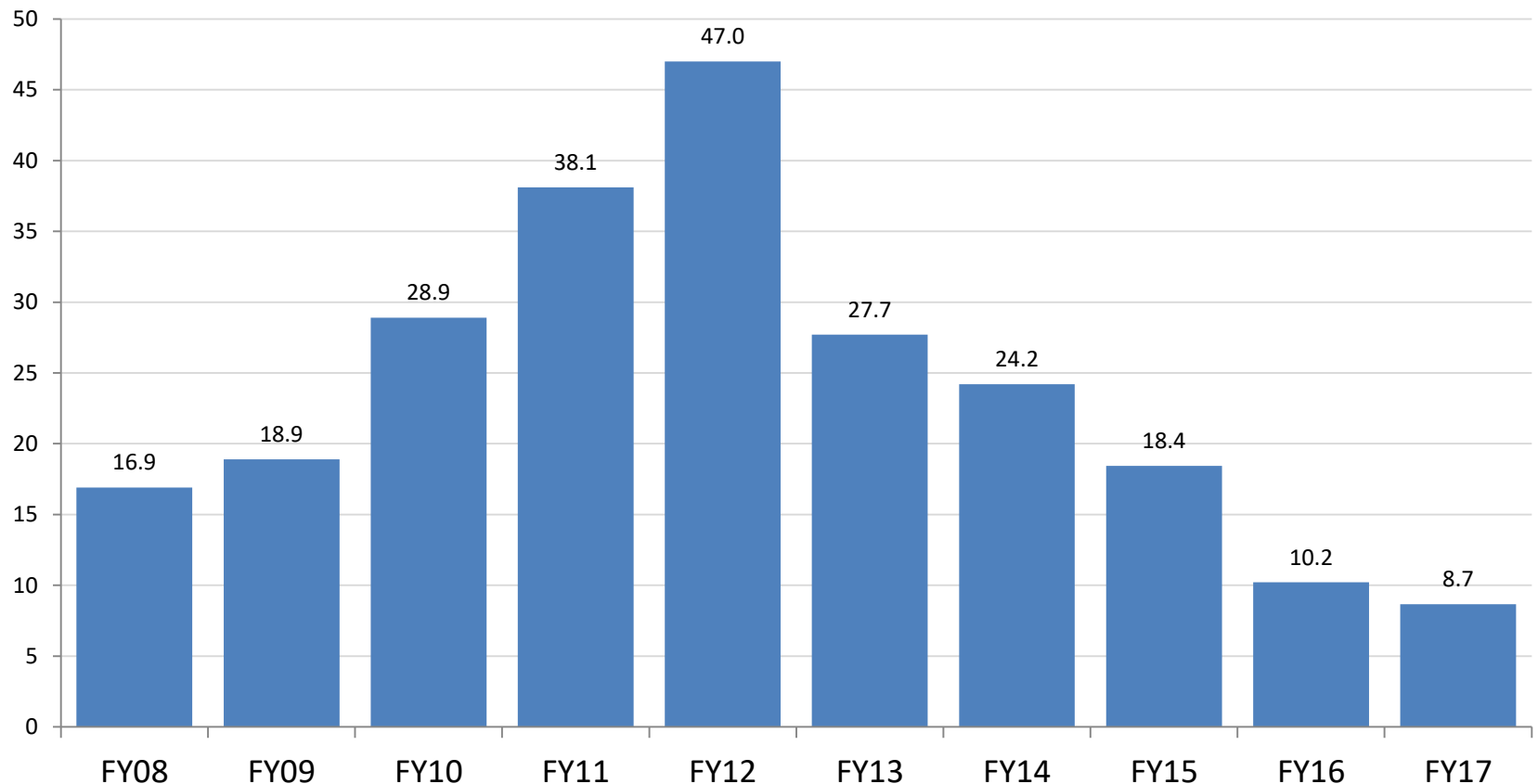
- Youth detained pre-disposition for Crimes of Violence increased 13% over ten years
- Pre-disposition for non-violent felonies decreased 19 percentage points over ten years.

Proportion of Pre-D Detention Admissions For Crimes of Violence, FY08 - FY17



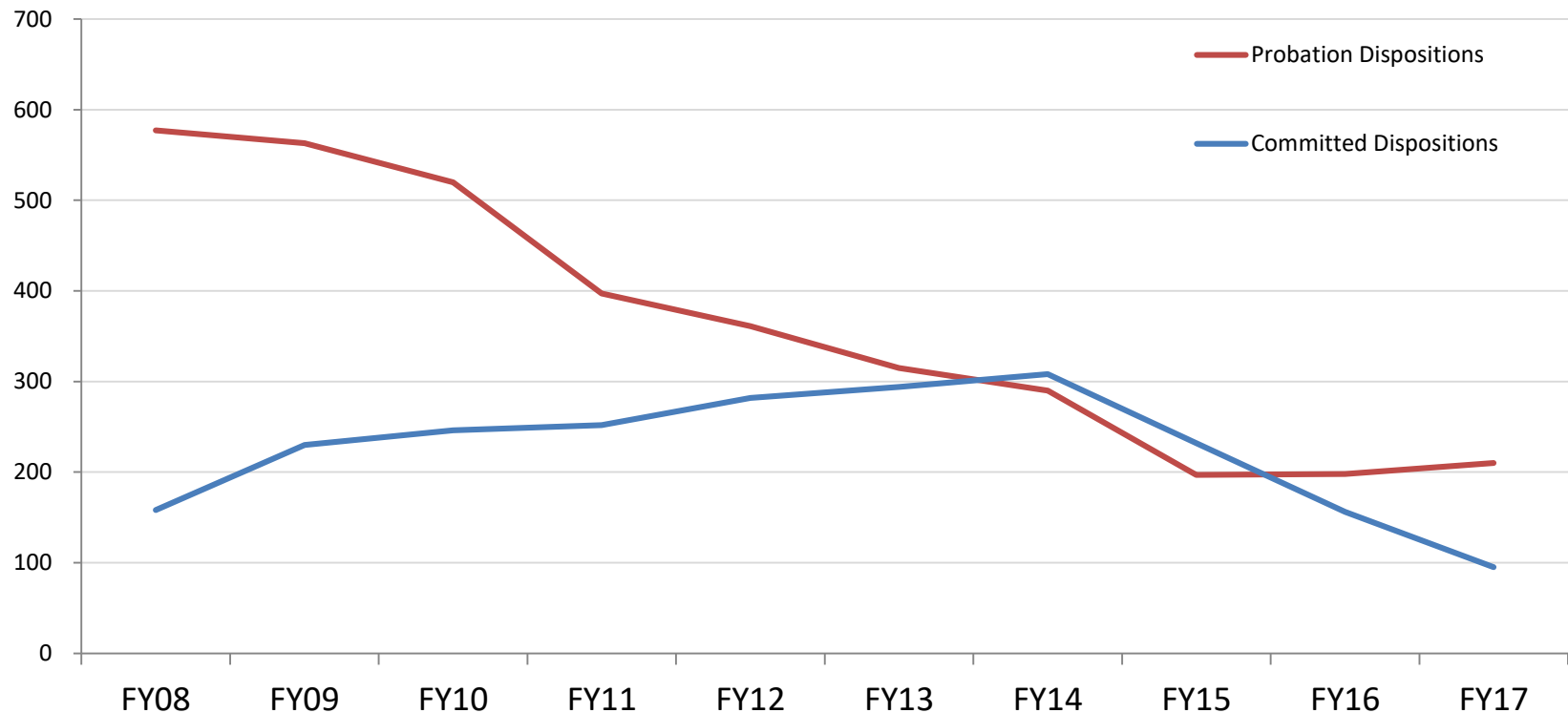
Prince George's County Youth In Detention Pending a Committed Placement Has Declined Dramatically

- Juvenile court pending placement population declined 48.5% in ten years to 8.7 youth in FY16.



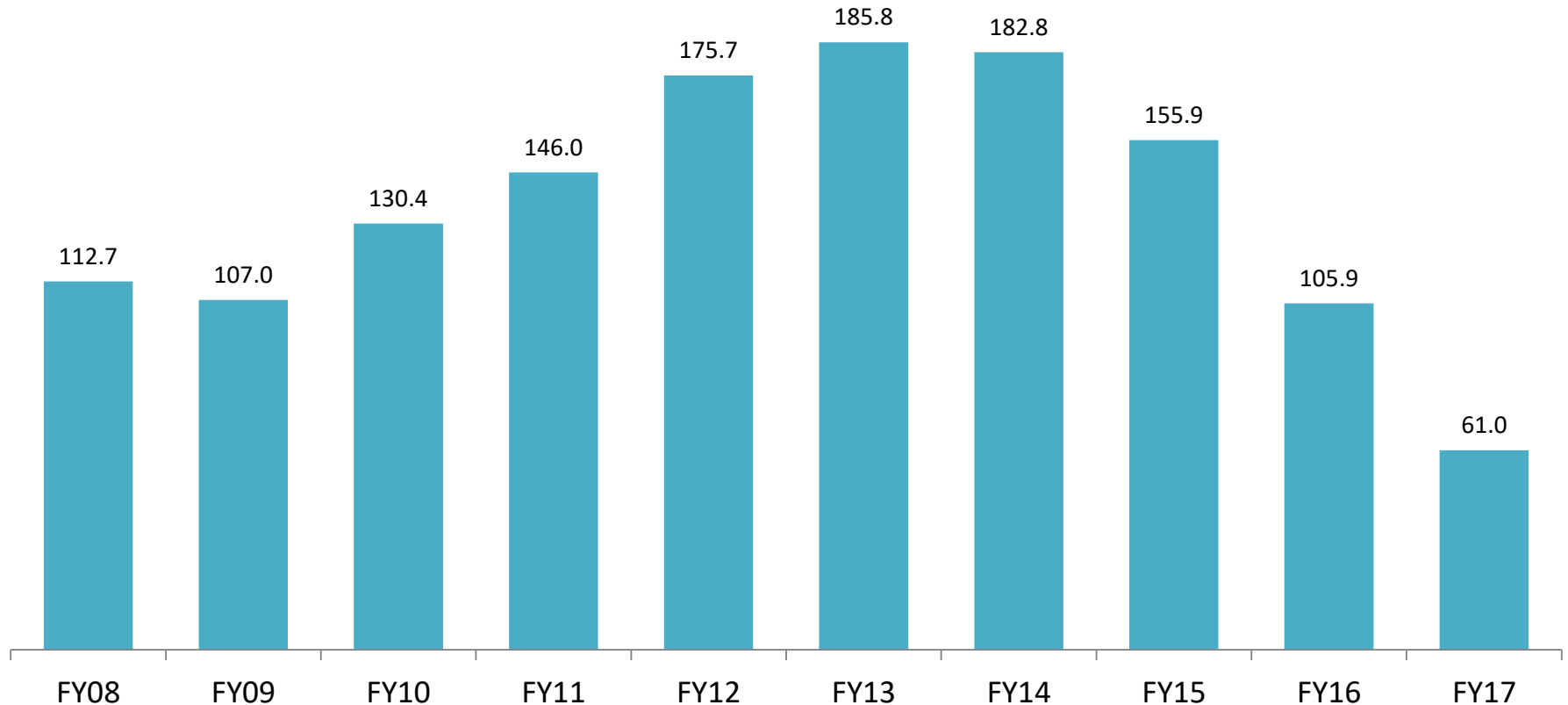
Prince George's County Juvenile Probation and Commitment Orders Have Declined

- By FY16, Prince George's County Juvenile probation orders declined 65.7% and then increased slightly in FY17.
- Statewide probation orders declined 54.2% over the same period.
- Prince George's County juvenile commitments declined 39.9% in ten years. Statewide commitments declined 34.0% over the same period.



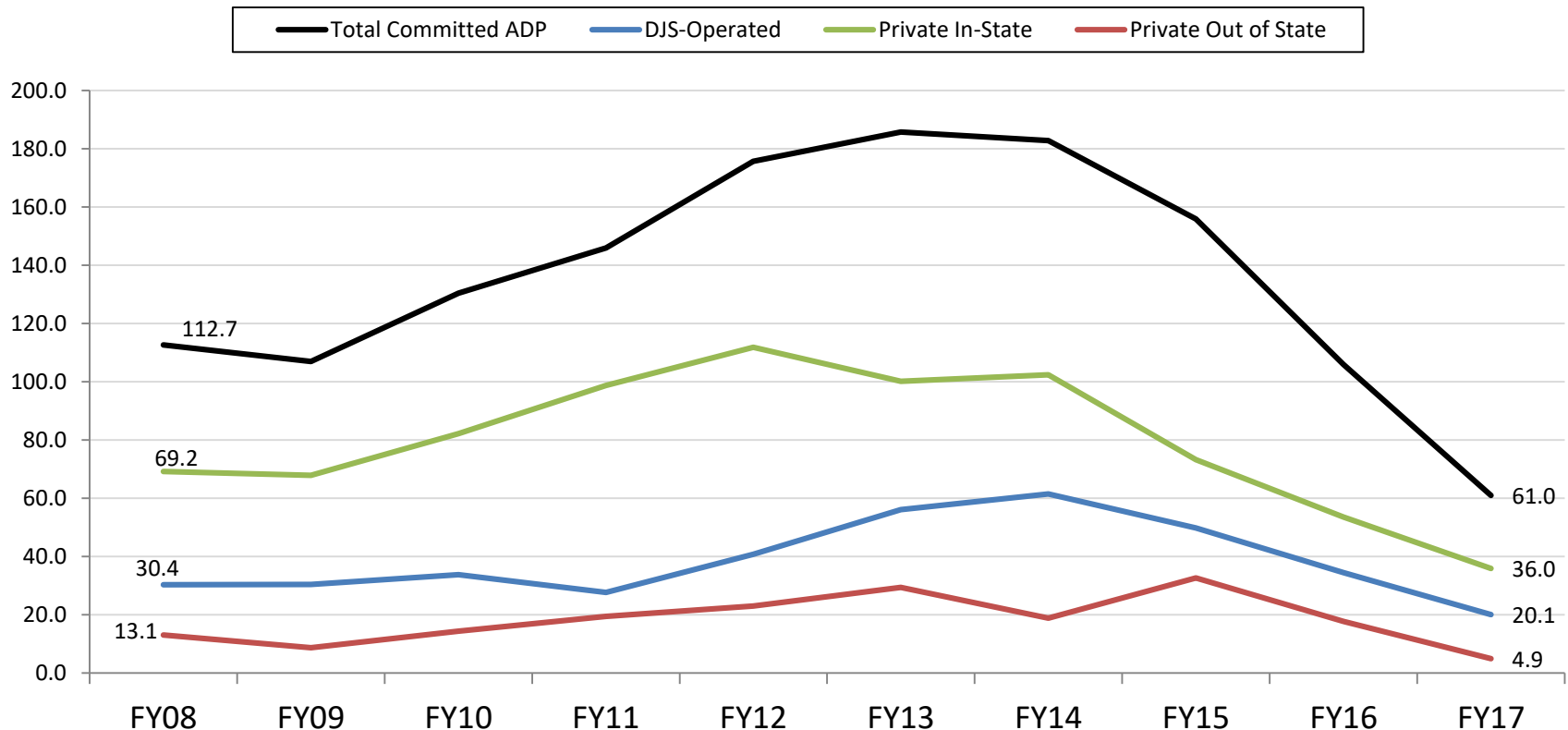
Average Committed Out of Home Population Has Declined Significantly in Prince George's County

- Overall daily population of Prince George's County youth committed by the juvenile court to out of home placement decreased 45.9% over ten years, from 112.7 in FY08 to 61.0 in FY17.
- Statewide average committed population declined 50.9% over the same period.



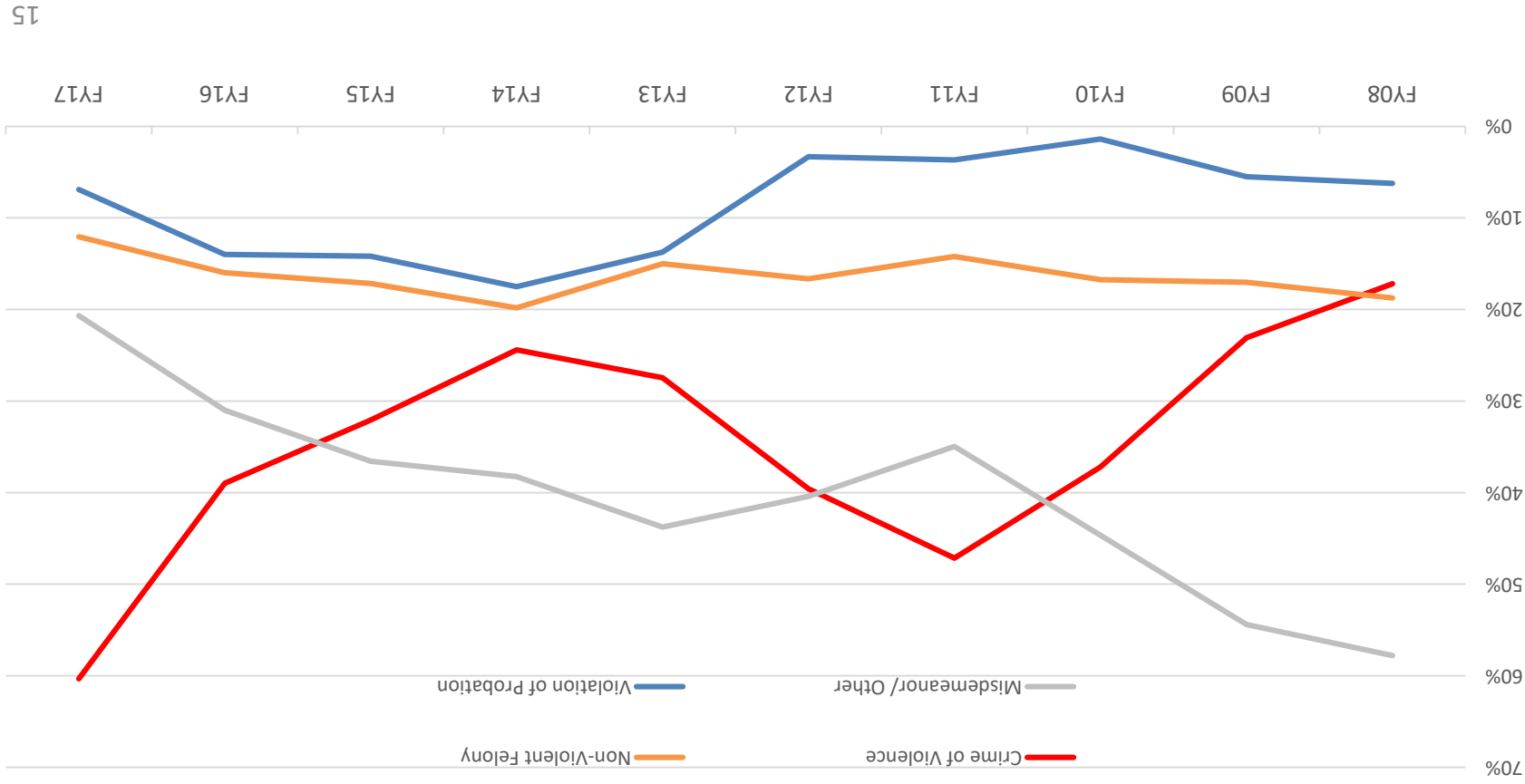
Prince George's County Committed Youth Population Has Decreased for All Facility Types

- Overall committed Out-of- Home population has decreased 45.9% since FY08.
- DJS-Operated ADP decreased 33.9%, and Private In-State decreased 48.0% since FY08.
- Out of State committed average population declined from the high of 33 in FY15, to 5 in FY17.



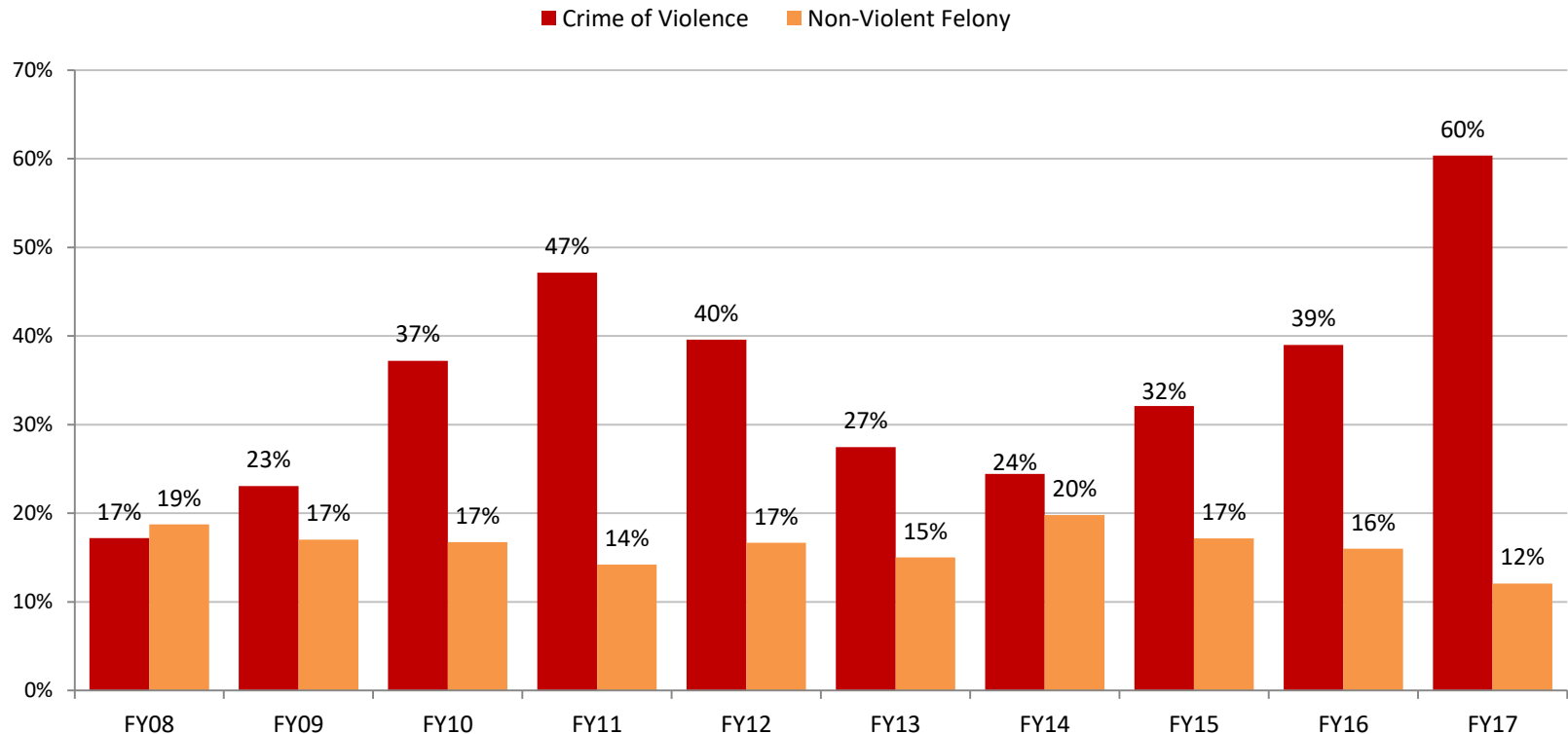
The Rate of Juveniles Committed for Low-Level Offenses Has Declined

- The proportion of new commitments for misdemeanors and other low-level offenses declined over ten years.
- The proportion of new commitments for crimes of violence increased 43% over ten years.



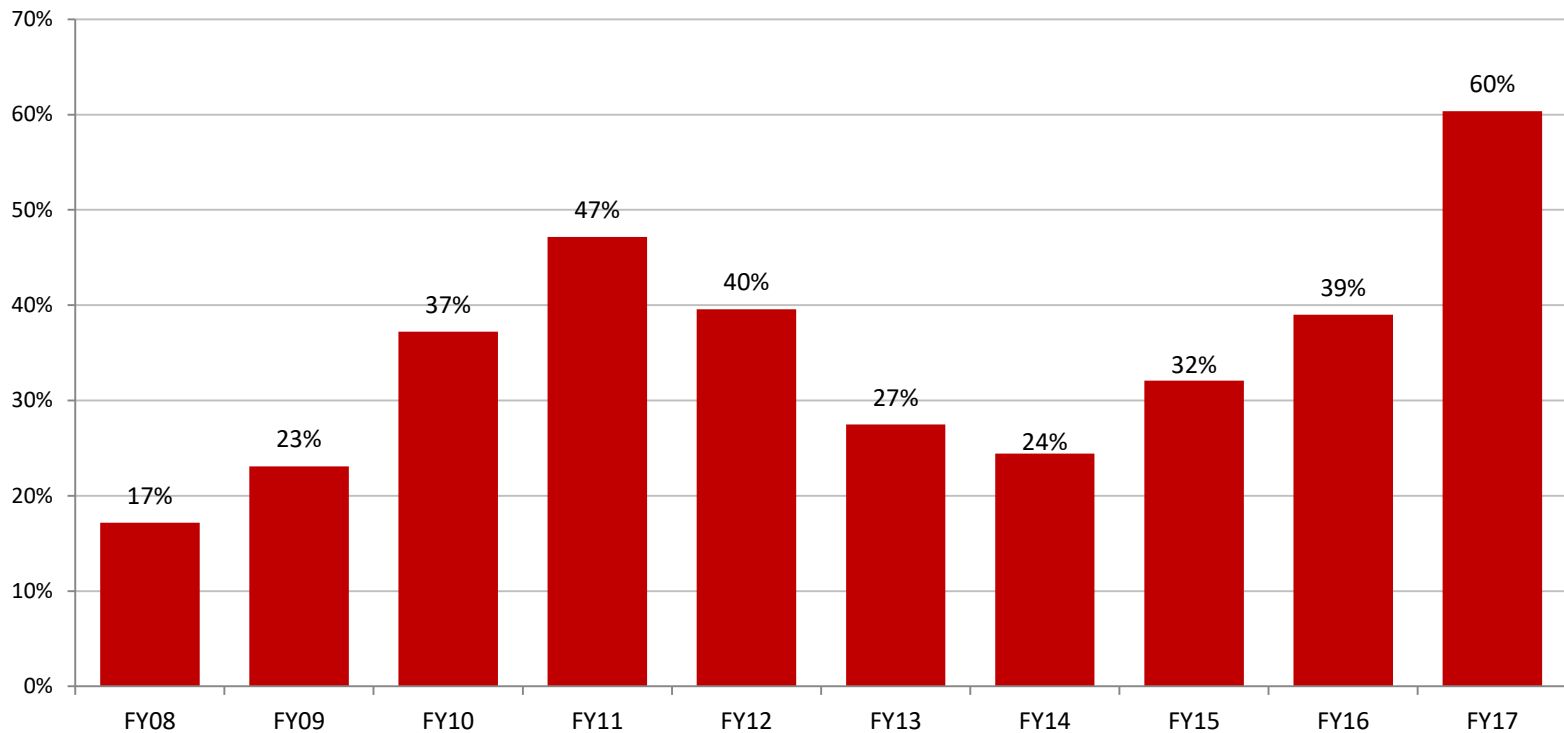
The Rate of Juveniles Committed for Crimes of Violence has Increased in Prince George's County

- Crimes of Violence made up 60% of new commitments in FY 2017.
- The rate of juveniles committed for Non-Violent Felonies has decreased over the past two years.



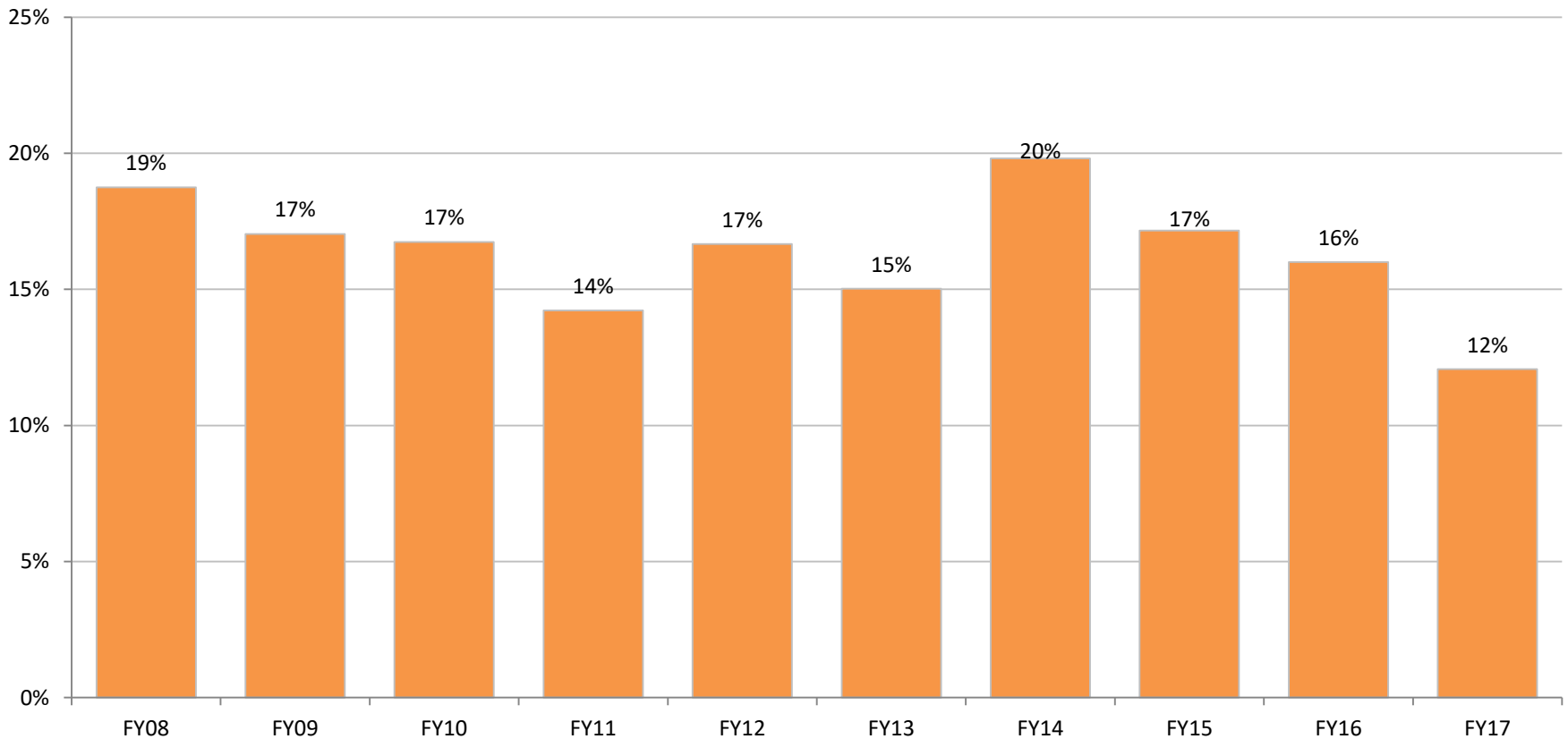
The Rate of Juveniles Committed for Crimes of Violence has Increased in Prince George's County

- Crimes of Violence make up 60% of new commitments in FY 2017 in Prince George's County.



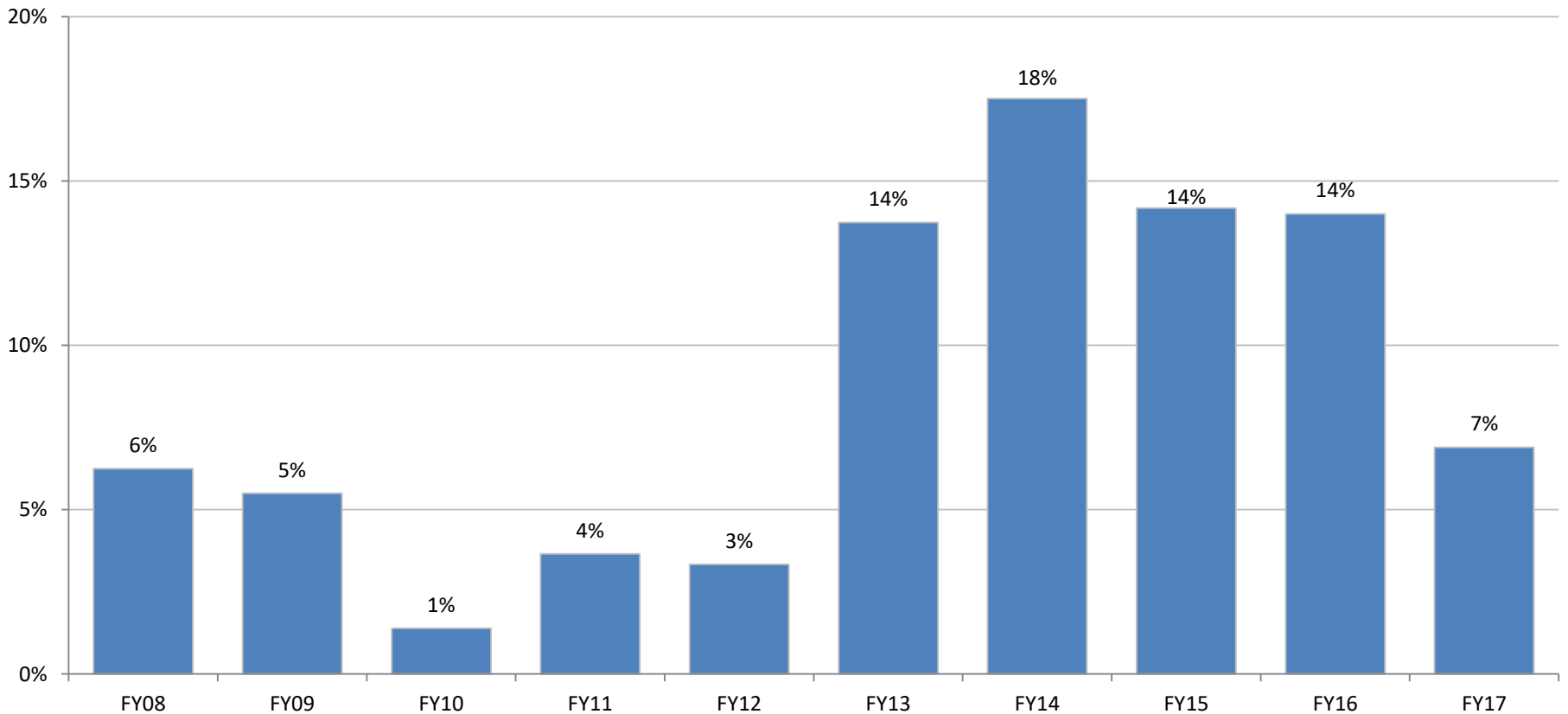
The Rate of Juveniles Committed for Non-Violent Felonies has Decreased in Prince George's County

- Non-Violent Felonies decreased slightly over ten years.



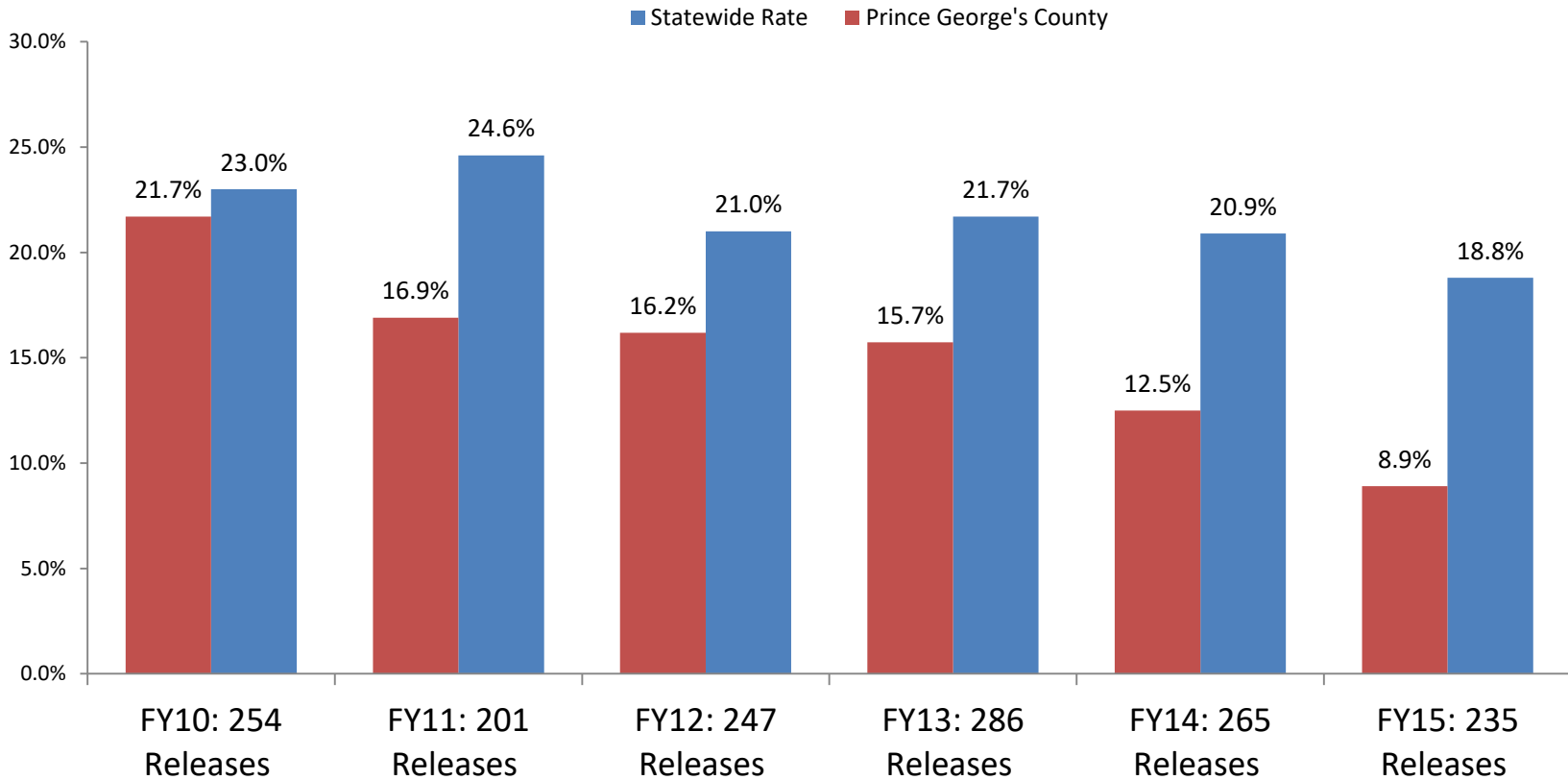
The Rate of Juveniles Committed for Violations of Probation has Declined in Prince George's County

- After increasing from FY 2012 through FY 2014, the rate of new commitments for Violations of Probation has decreased 11 percentage points over the past three years.



Recidivism Rates Prince George's County DJS Committed Youth Have Declined in Recent Years

- 8.9% of Prince George's County youth released from committed placement in FY15 had a new offense within a year that resulted in a delinquent adjudication or criminal conviction, a decrease of 3.6 percentage points from FY14.
- The Statewide rate was 18.8% in FY15, down 2.1 points from FY14.



Recidivism Rates for Prince George's County DJS Probation Youth Have Declined in The Past Year

- 8.7% of Prince George's County youth placed on probation for the first time in FY15 had a new offense within a year that resulted in a delinquent adjudication or criminal conviction, a decrease of 0.5 percentage points from FY14.
- The Statewide rate was 18.2% in FY15, down 0.9 percentage points from FY14.

