

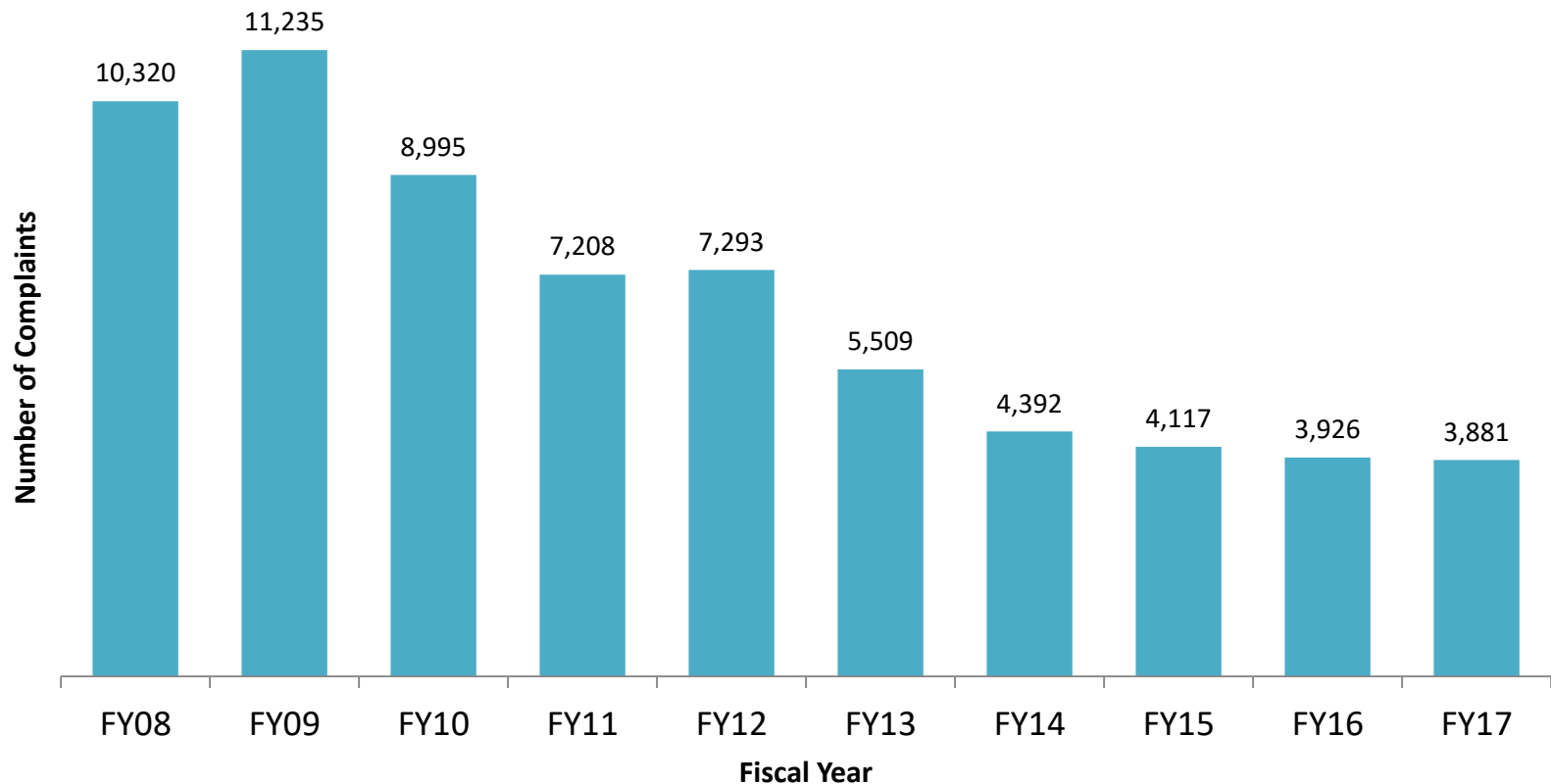


# Metro Region Juvenile Services Long Term Trends: Counties of Montgomery and Prince George's

DJS Office of Research and Evaluation, January 2018

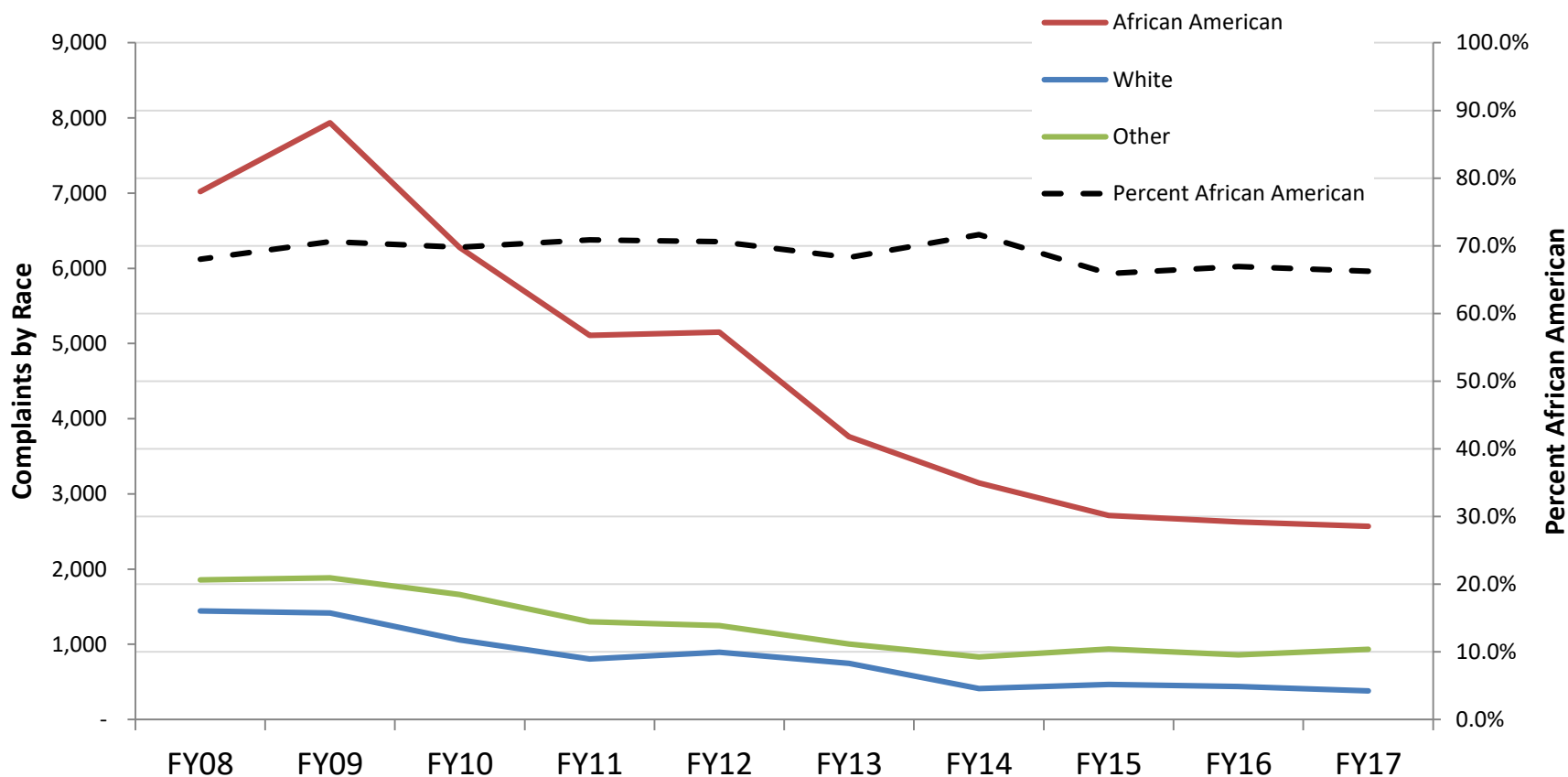
# Metro Region Juvenile Complaints Have Declined Significantly

- Metro Region complaints referred to DJS Intake declined 62.4% in ten years.
- Statewide complaints declined 57.9% over the same period.



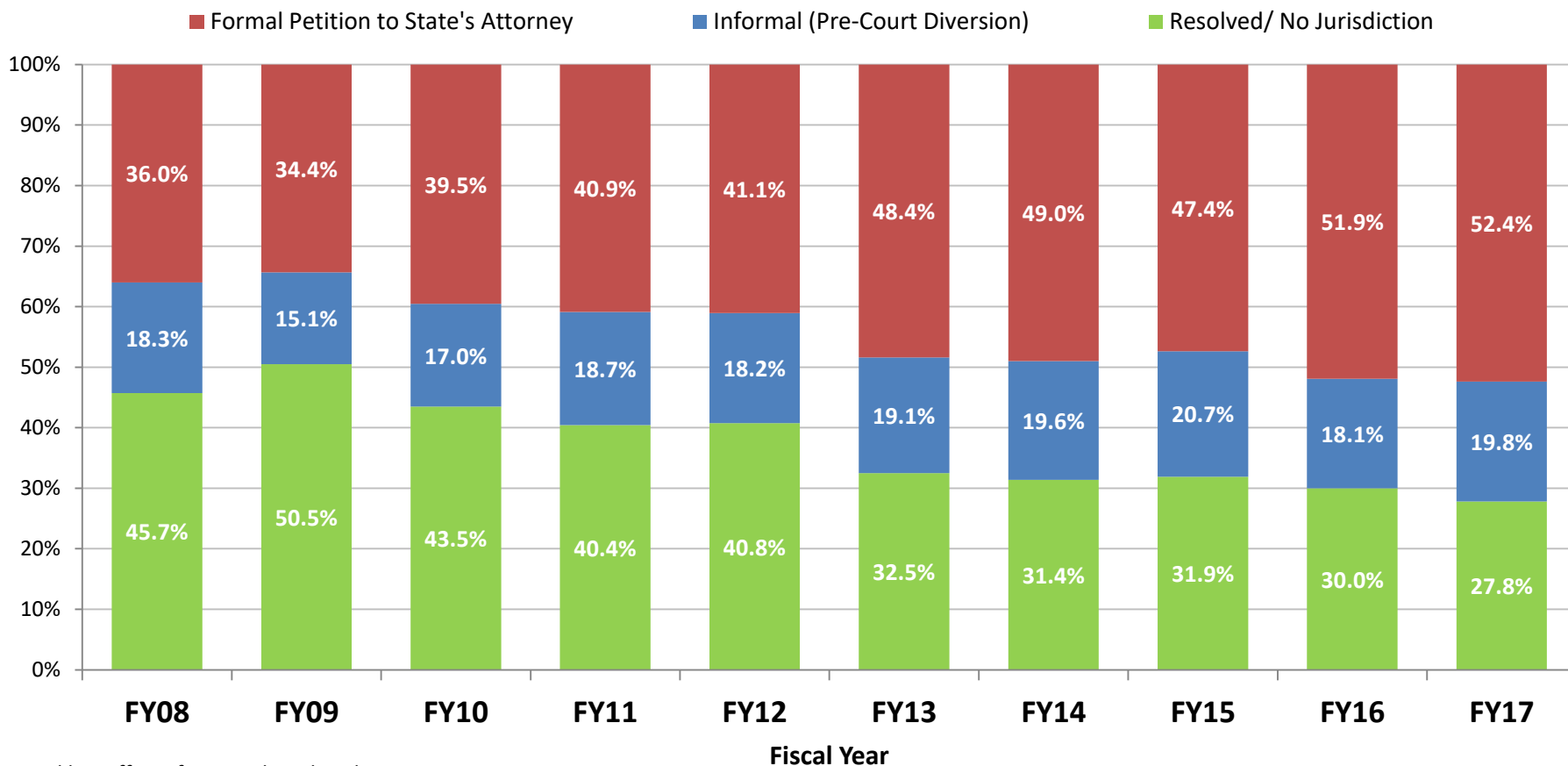
# Juvenile Complaints in Metro Region Have Declined for All Race/Ethnicities Since FY07

- Complaints for Metro Region African American youth declined 63.4%, and declined 73.7% for white youth.
- African American youth comprise 66.2% of complaints.
- African American youth comprise 25.7% of the general population.



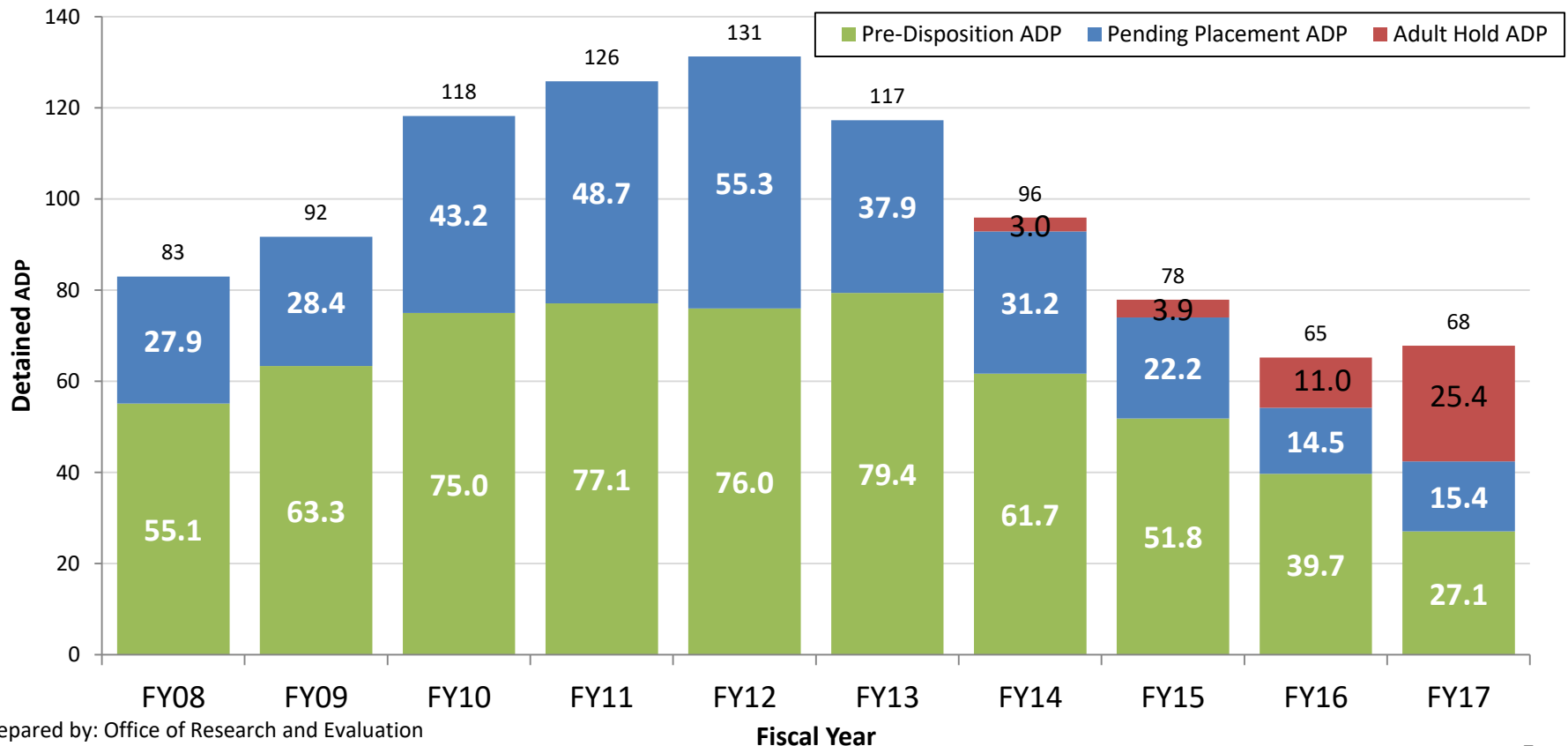
# Percent of Cases Referred to Juvenile Court by Metro Region has Increased

- 52.4% of Metro Region complaints were referred to court by DJS Intake in FY17, 16.4% more than in FY08. Statewide 46.7% were referred to court.
- 19.8% of Metro Region complaints were diverted to an informal DJS pre-court case. Statewide 14.6% were diverted.



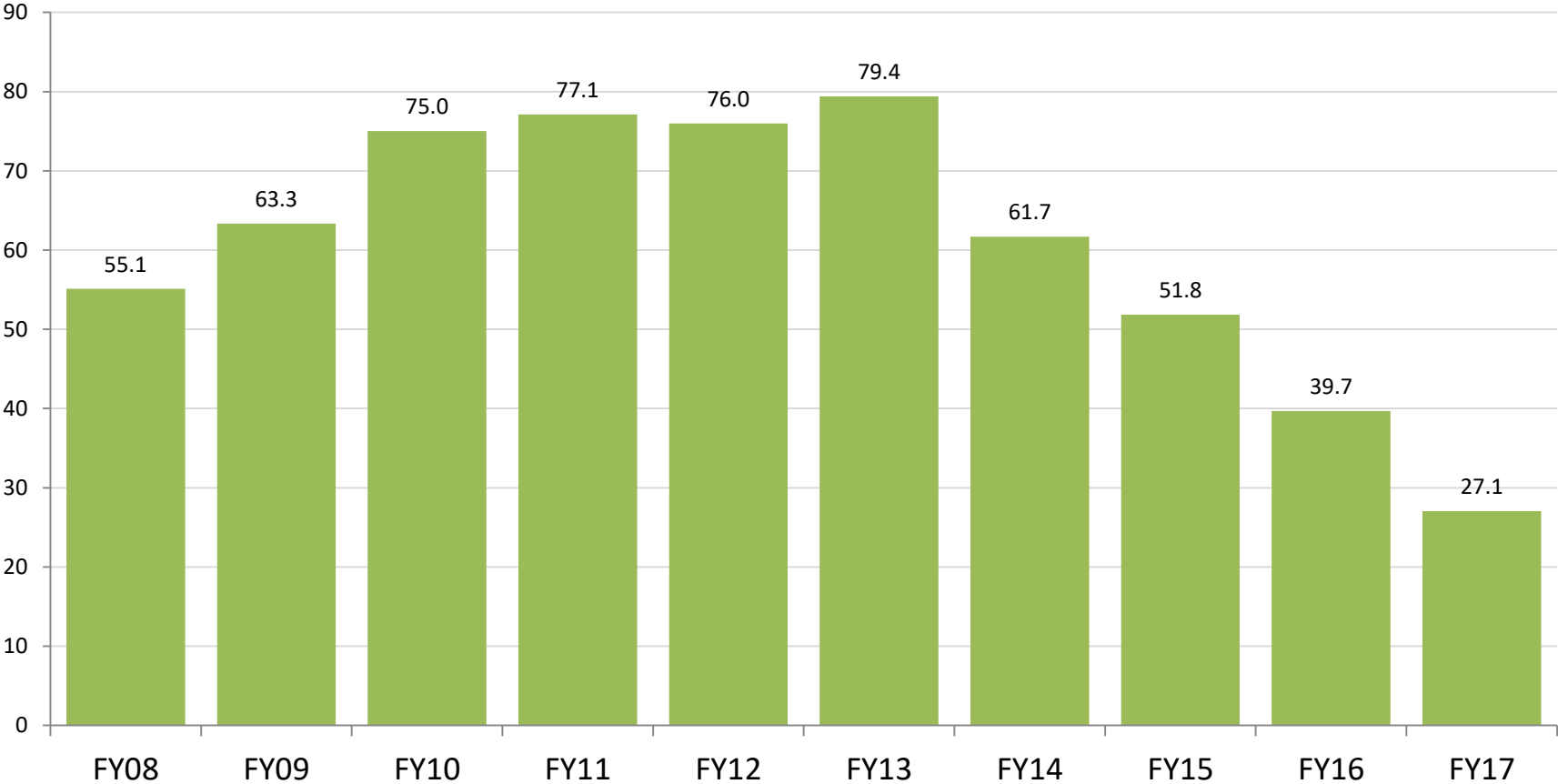
# Metro Region Detention Population Has Declined Significantly

- Metro Region daily population in DJS detention declined 18.1% in ten years, to 68 in FY17. The statewide detention population declined 27.7% over the same period.
- Cases detained for the Adult Court now make up 37.4% of the DJS detained population in Metro Region.



# Metro Region Youth Population In Detention Pre-Disposition Has Declined Significantly

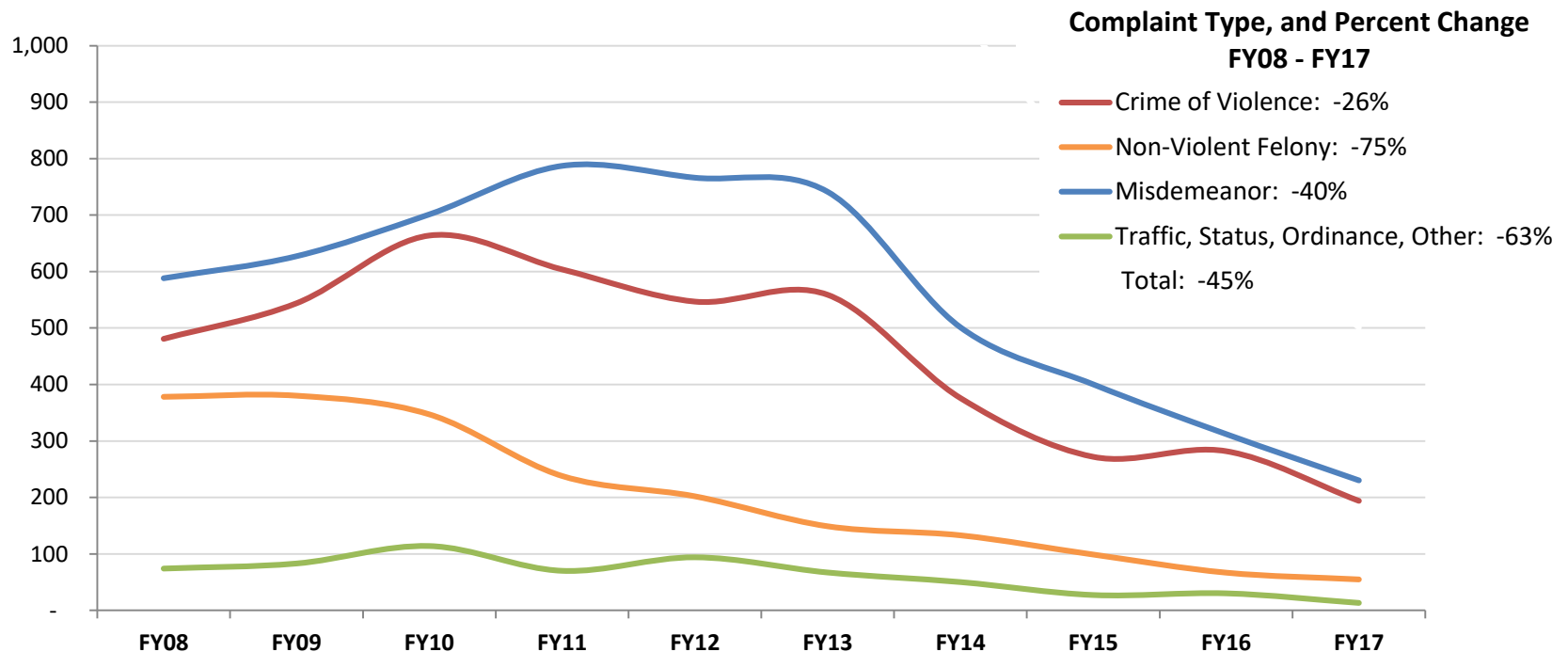
- The Metro Region juvenile pre-dispositional detained population declined 50.8% in ten years to 27 youth in FY 2017.



# Metro Region Pre-Disposition Detention Placements Have Decreased for All Complaint Types

- Youth detained pending disposition for misdemeanors has decreased 40% over ten years.
- Youth detained pending disposition for crimes of violence has decreased 26% over ten years.

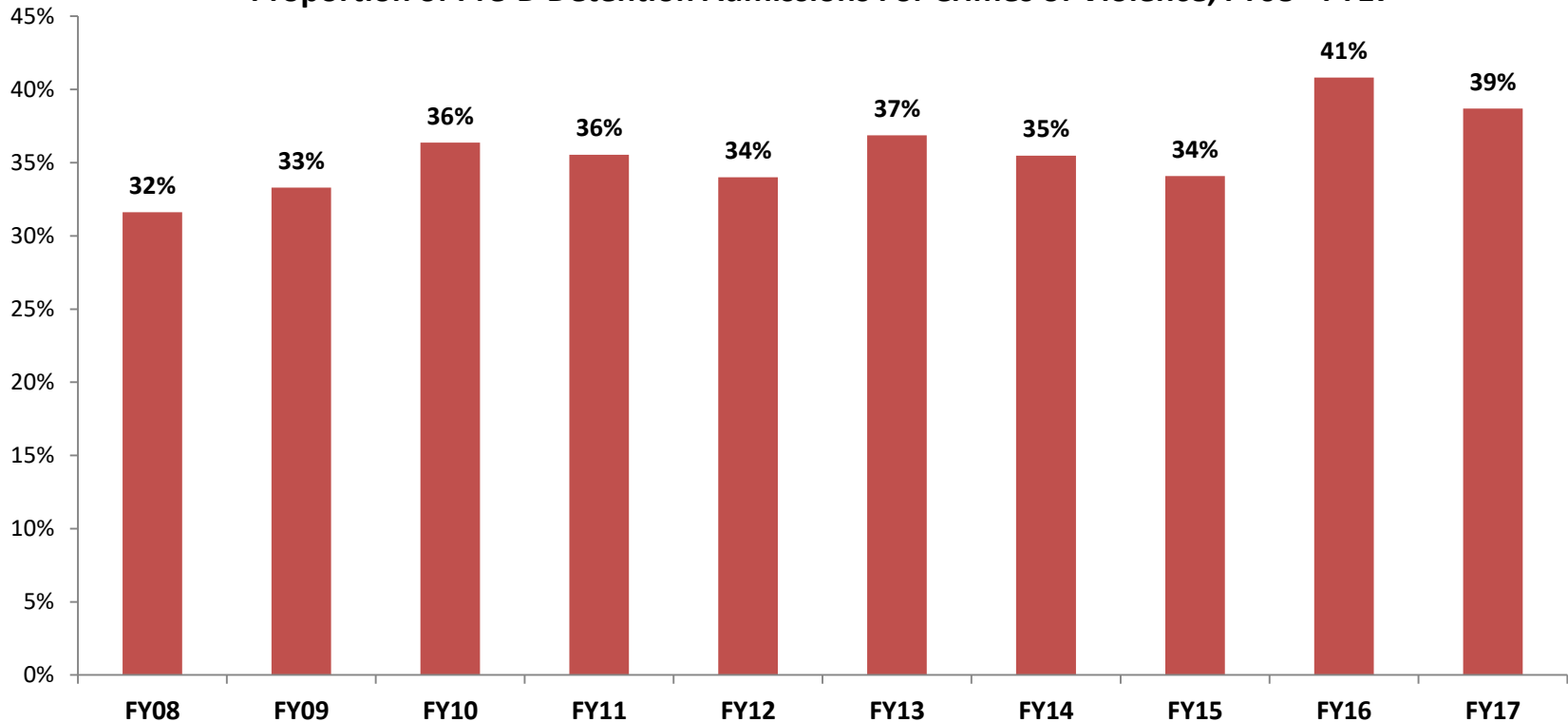
**Pre-D Detention Admissions by Complaint Type, FY08 - FY17**



# Crimes of Violence Make Up an Increasing Proportion of Detention Placement Offenses

- The proportion of youth detained pre-disposition for Crimes of Violence complaints has increased 7 percentage points over ten years.
- The detained population is increasingly comprised of youth with violent crimes complaints.

**Proportion of Pre-D Detention Admissions For Crimes of Violence, FY08 - FY17**

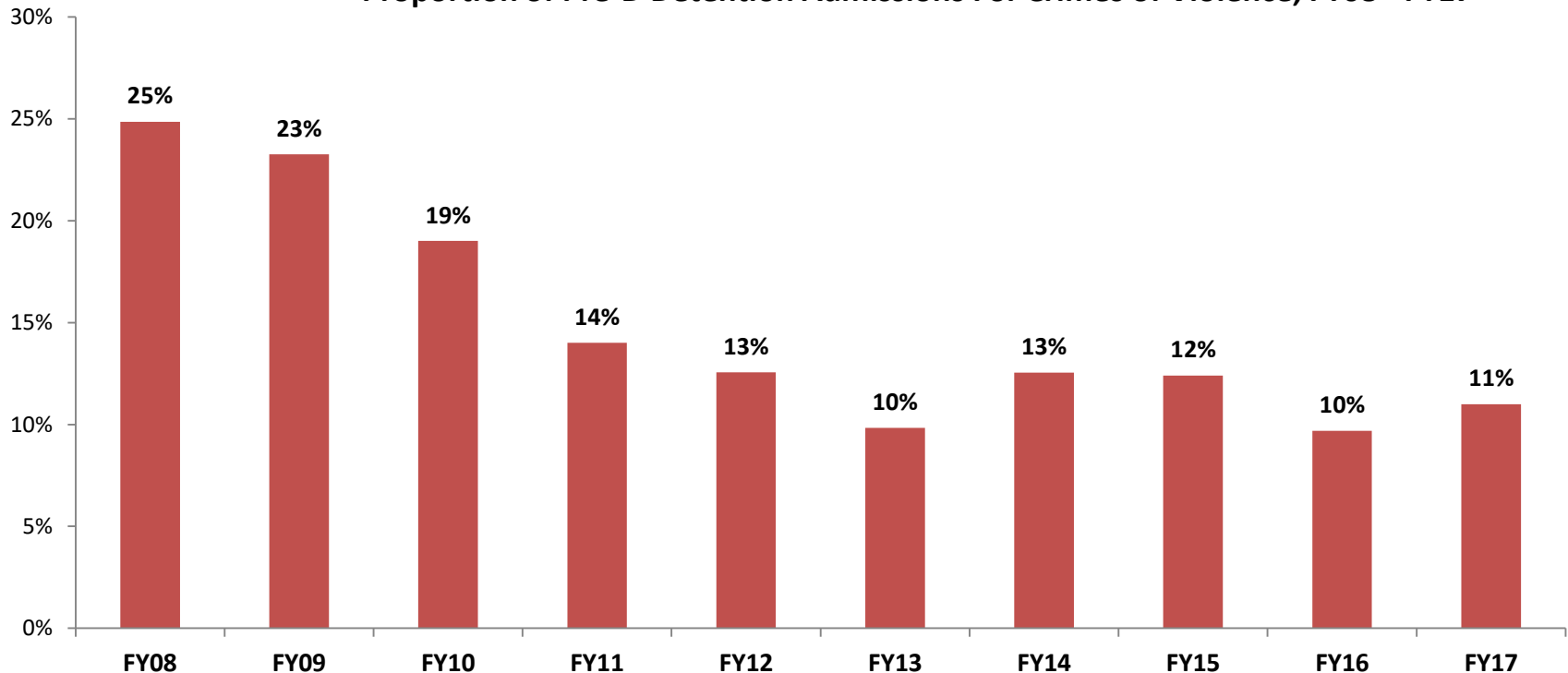




# Pre-Detention Placements for Non-Violent Felonies have Declined

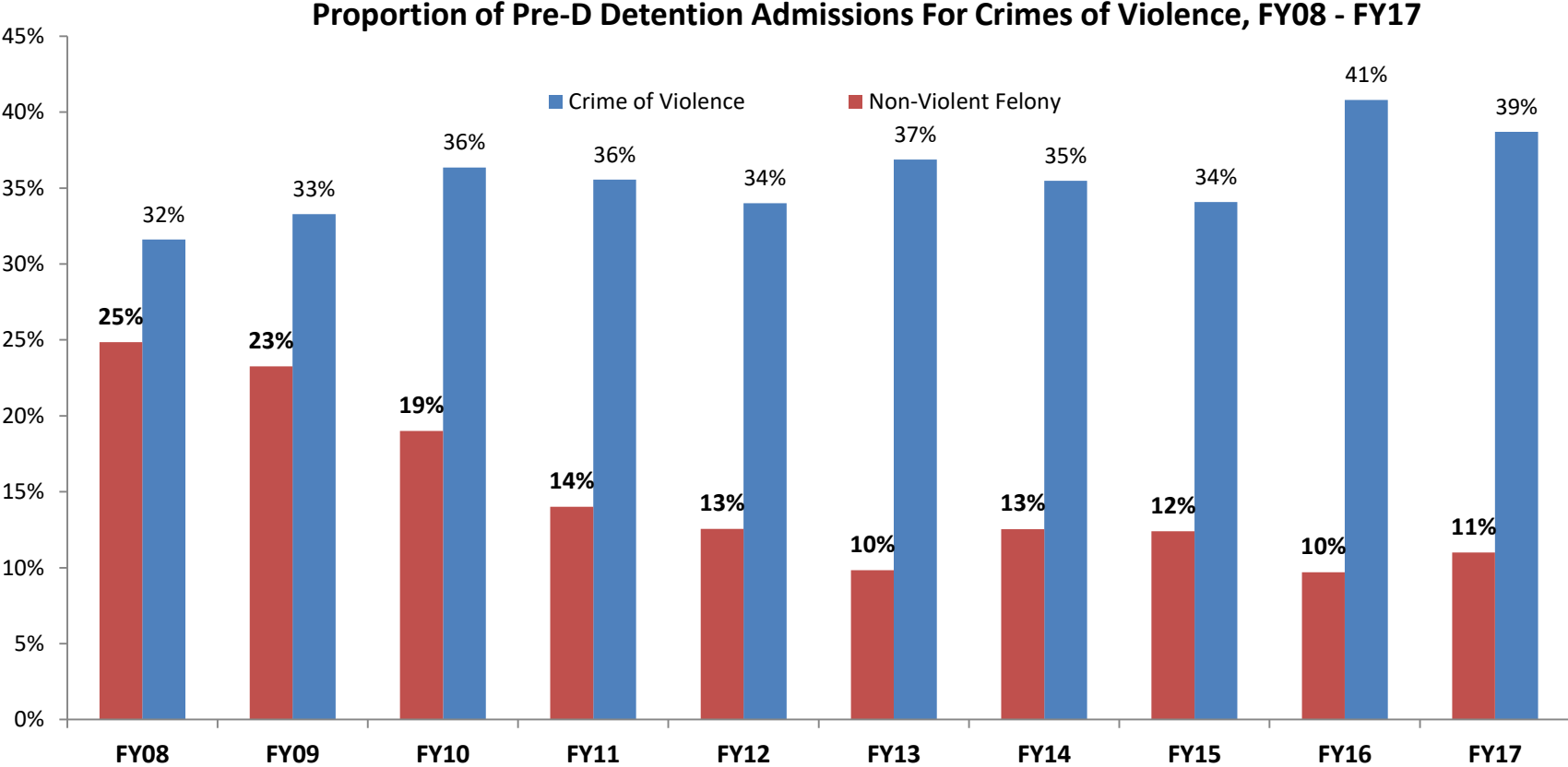
- The proportion of youth detained pre-disposition for Non-Violent Felony complaints has decreased 14 percentage points over ten years.
- The proportion of youth detained for non-violent felonies increased slightly between FY 16 and FY 17.

Proportion of Pre-D Detention Admissions For Crimes of Violence, FY08 - FY17



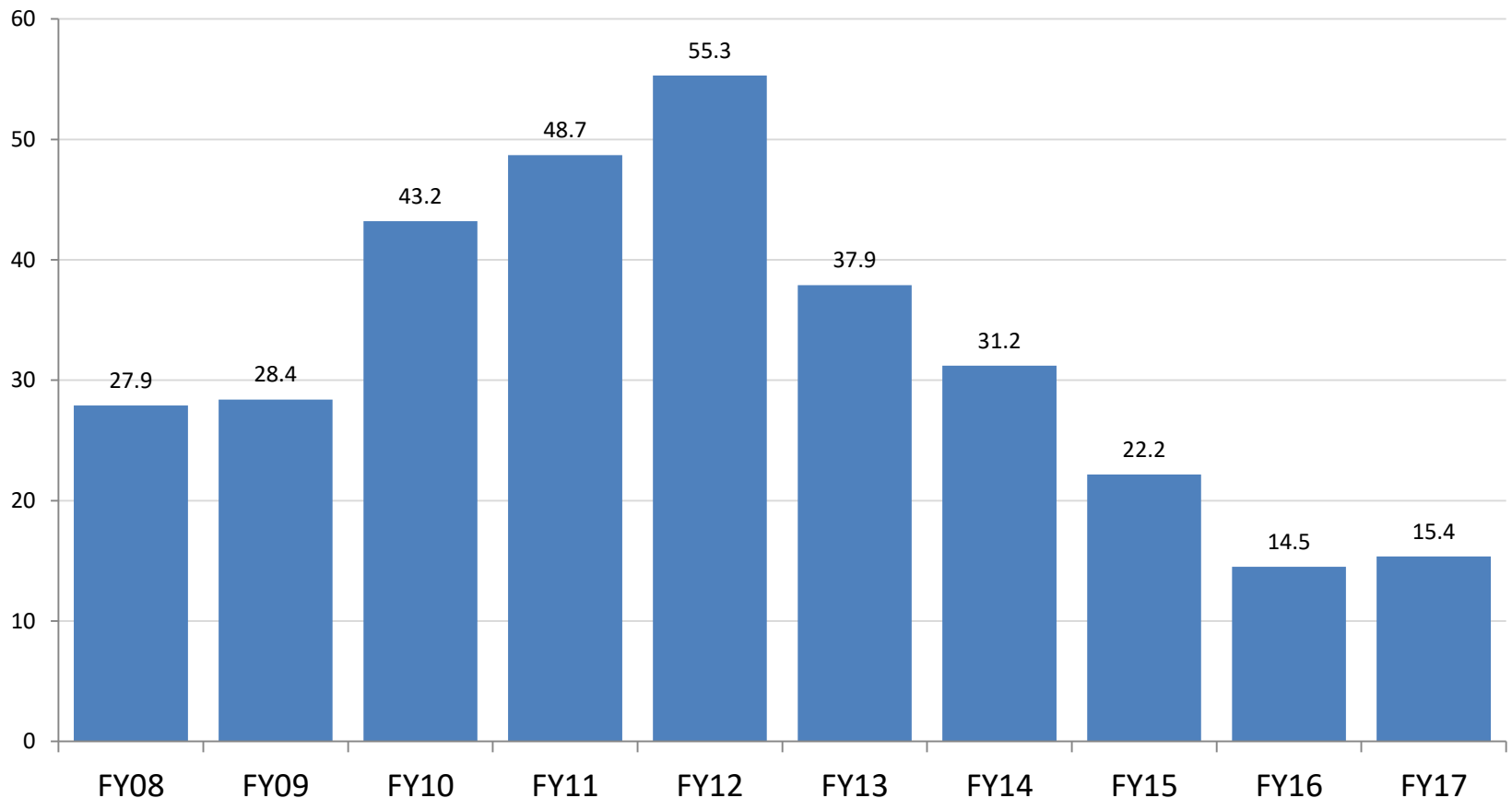
# Metro Region Pre-D Detention Population

- The proportion of youth detained pre-disposition for Crimes of Violence increased over ten years.
- Youth detained for Non-Violent Felonies decreased over ten years.



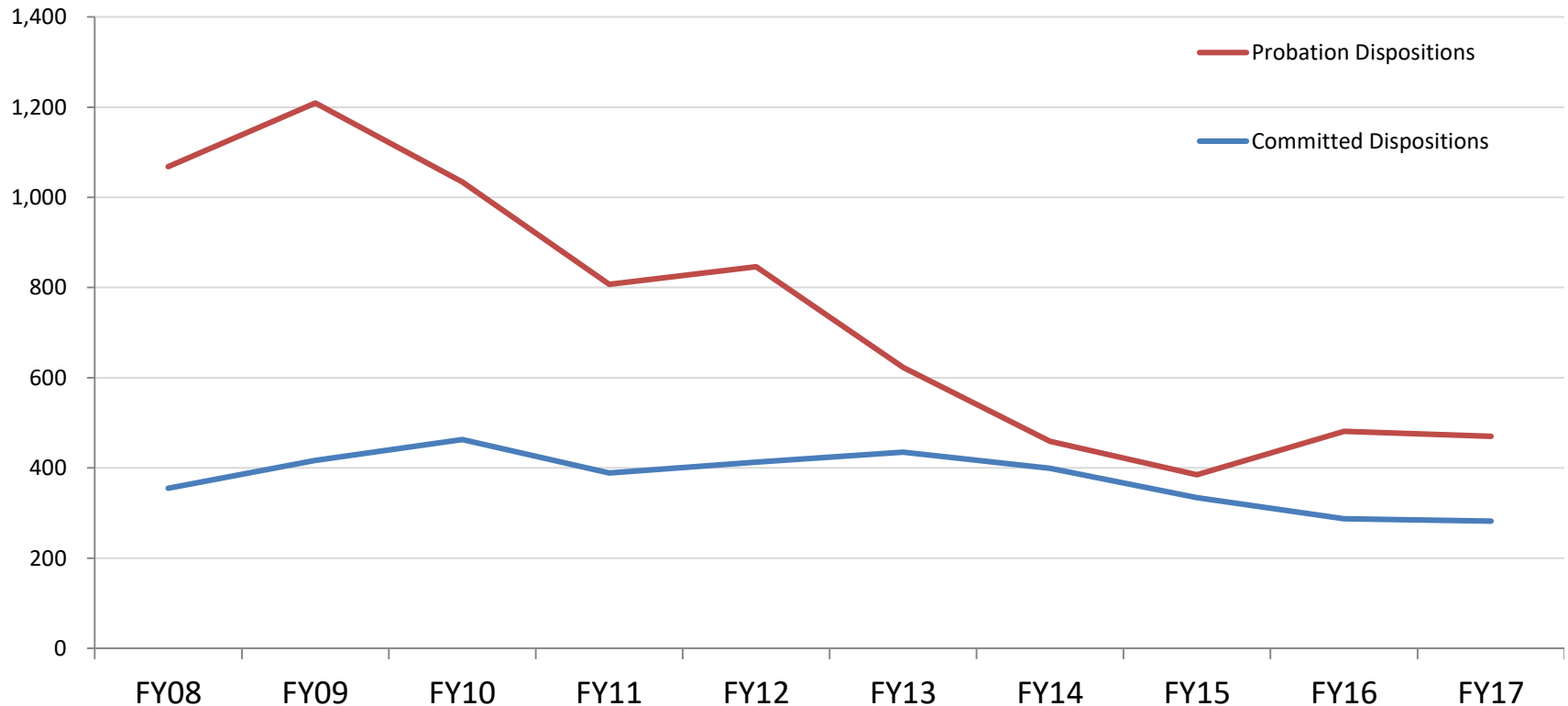
# Metro Region Youth In Detention Pending a Committed Placement Has Declined Dramatically

- Juvenile court pending placement population declined 39.9% since FY 2012 to 15 youth in FY 2017.



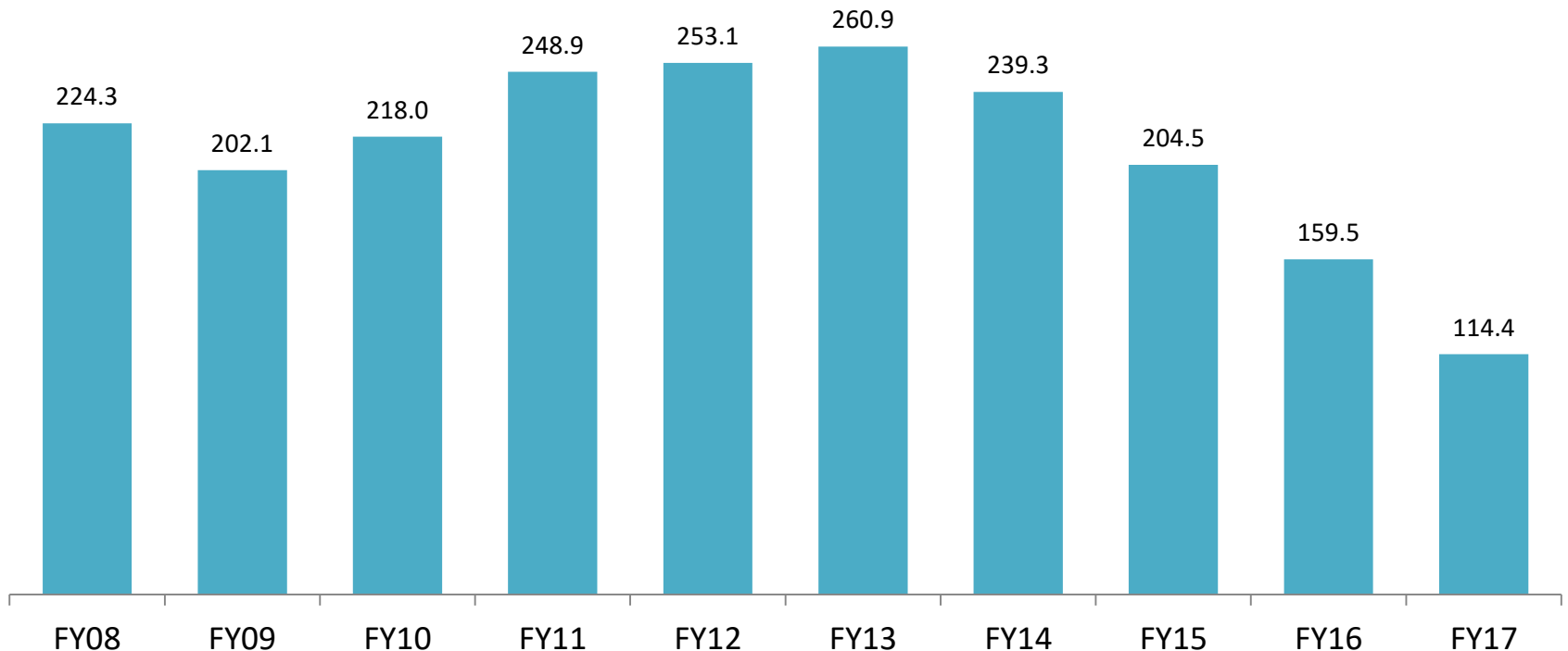
# Juvenile Probation and Commitment Orders Have Declined

- Metro Region Juvenile probation orders declined 56.0% in ten years. Statewide probation orders declined 54.2% over the same period.
- Metro Region juvenile commitments declined 20.6% in ten years. Statewide commitments declined 34.0% over the same period.



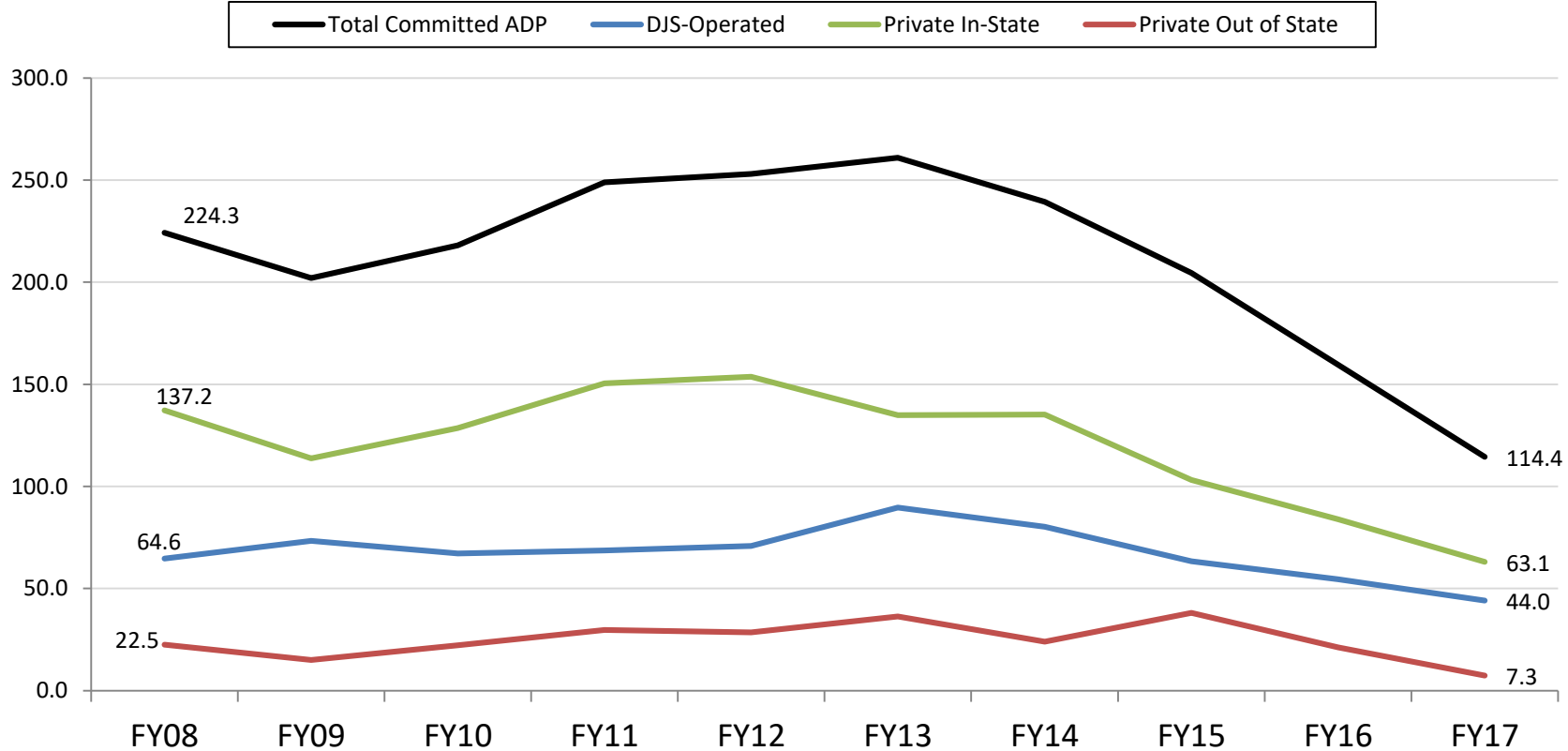
# Average Committed Out of Home Population Has Declined Significantly in the Metro Region

- The overall daily population of Metro Region youth committed by the juvenile court to out of home placement declined 49.0% over ten years, from 224 in FY08 to 114 in FY17.
- Statewide average committed population declined 50.9% over the same period.



# Metro Region Committed Youth Population Has Declined for All Facility Types

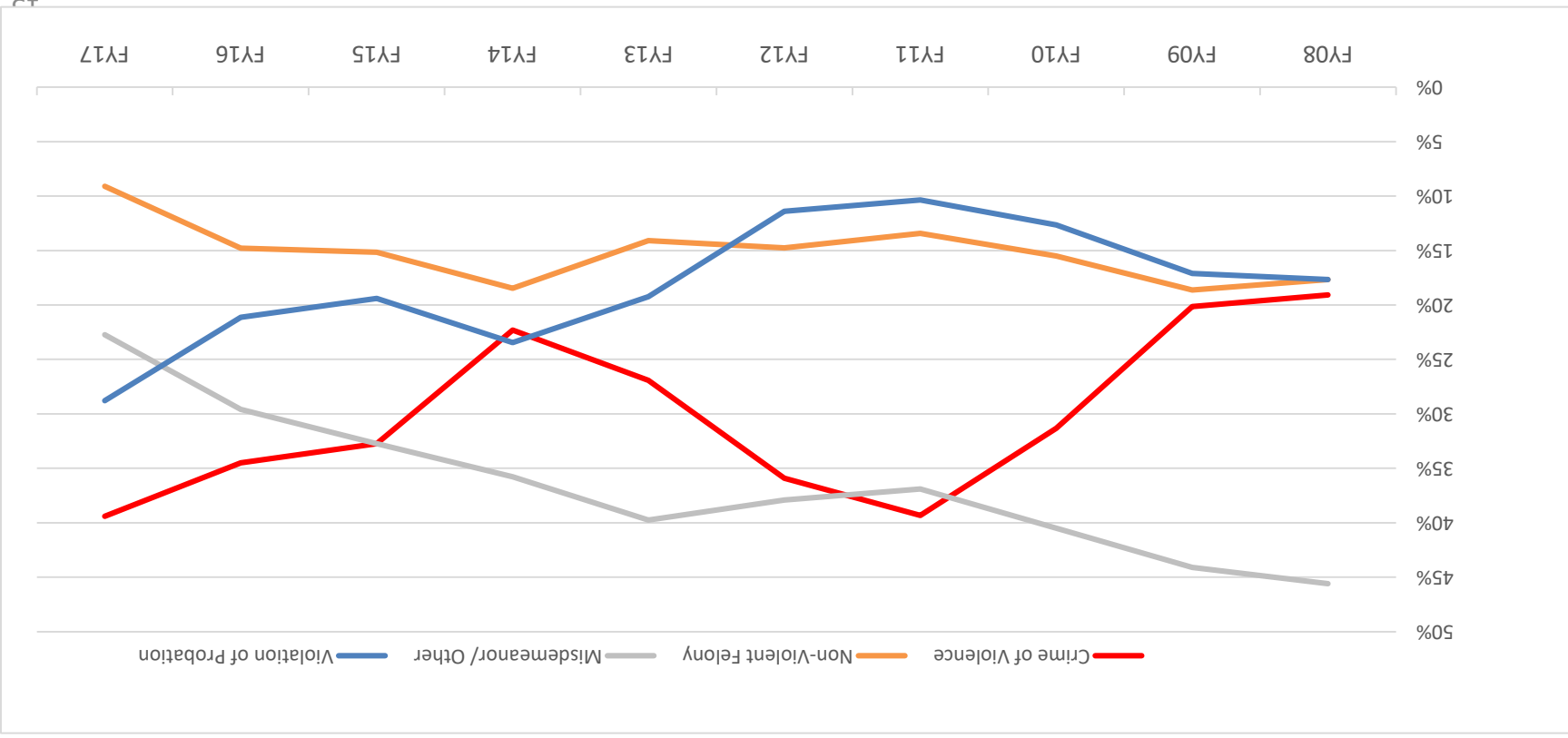
- Overall committed out-of-home population has declined 49.0% since FY08.
- DJS-Operated ADP decreased 31.9%, and Private In-State has declined 53.8% since FY08.
- Out of State committed average population declined from the high of 38 youth in FY15, to 7 in FY17.



# The Rate of Juveniles Committed for Low-Level Offenses Has Declined

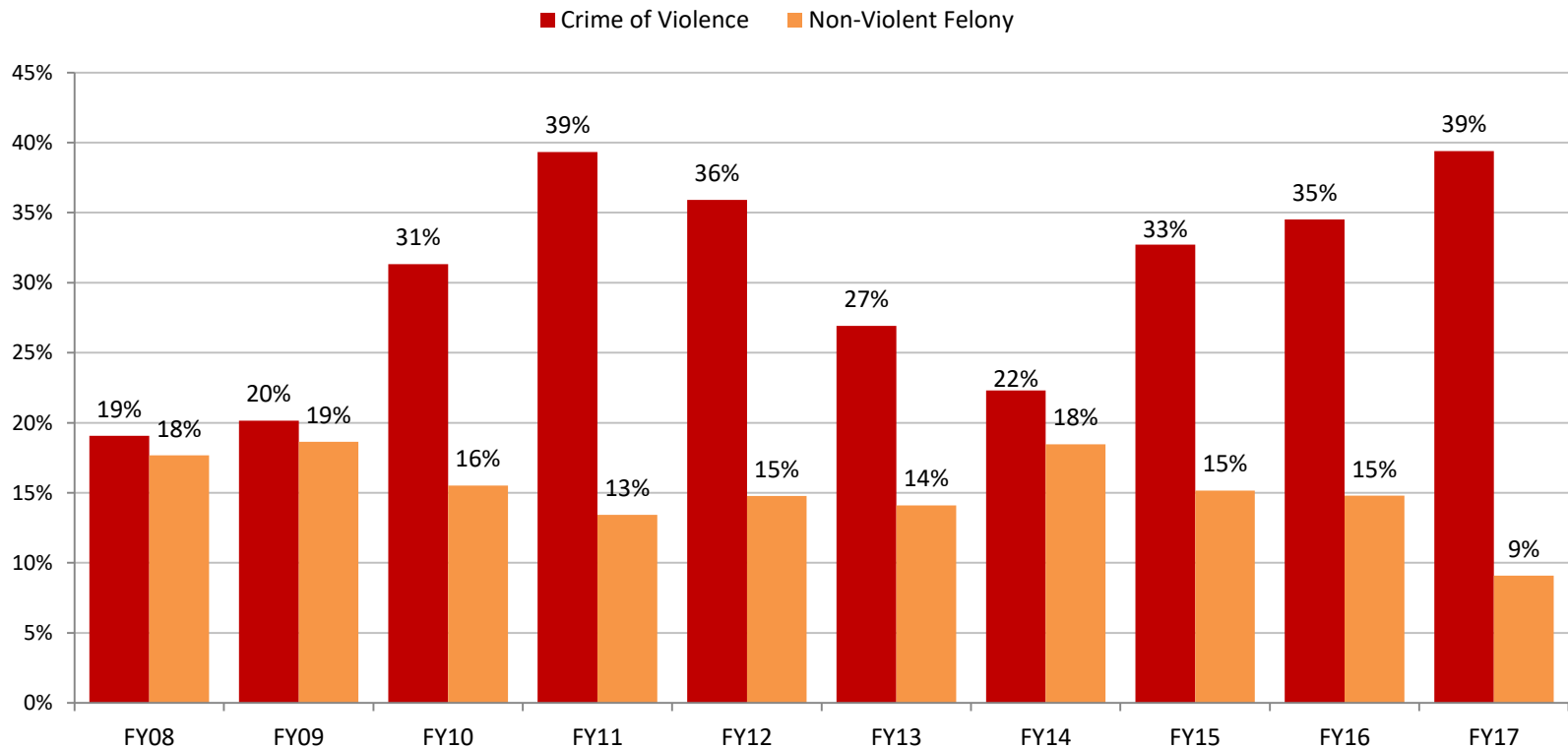
- The proportion of new commitments for misdemeanors and other low-level offenses declined over ten years.

- The proportion of new commitments for violations of probation has increased 8 percentage points in the last year.



# The Rate of Juveniles Committed for Crimes of Violence has Increased in the Metro Region

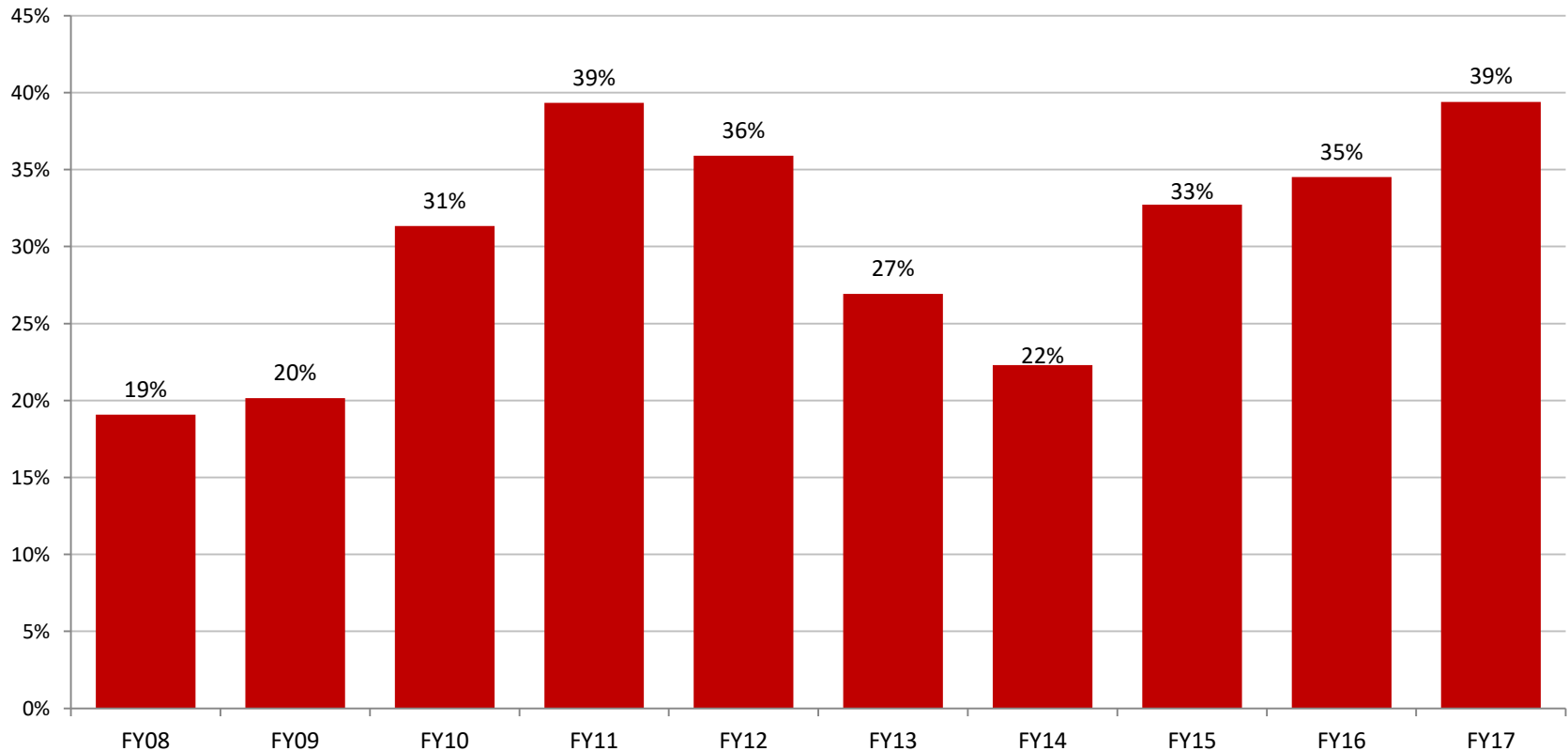
- Crimes of Violence make up over a third (39%) of new commitments in FY 2017 in the Metro Region.
- The rate of juveniles committed for Non-Violent Felonies has decreased.





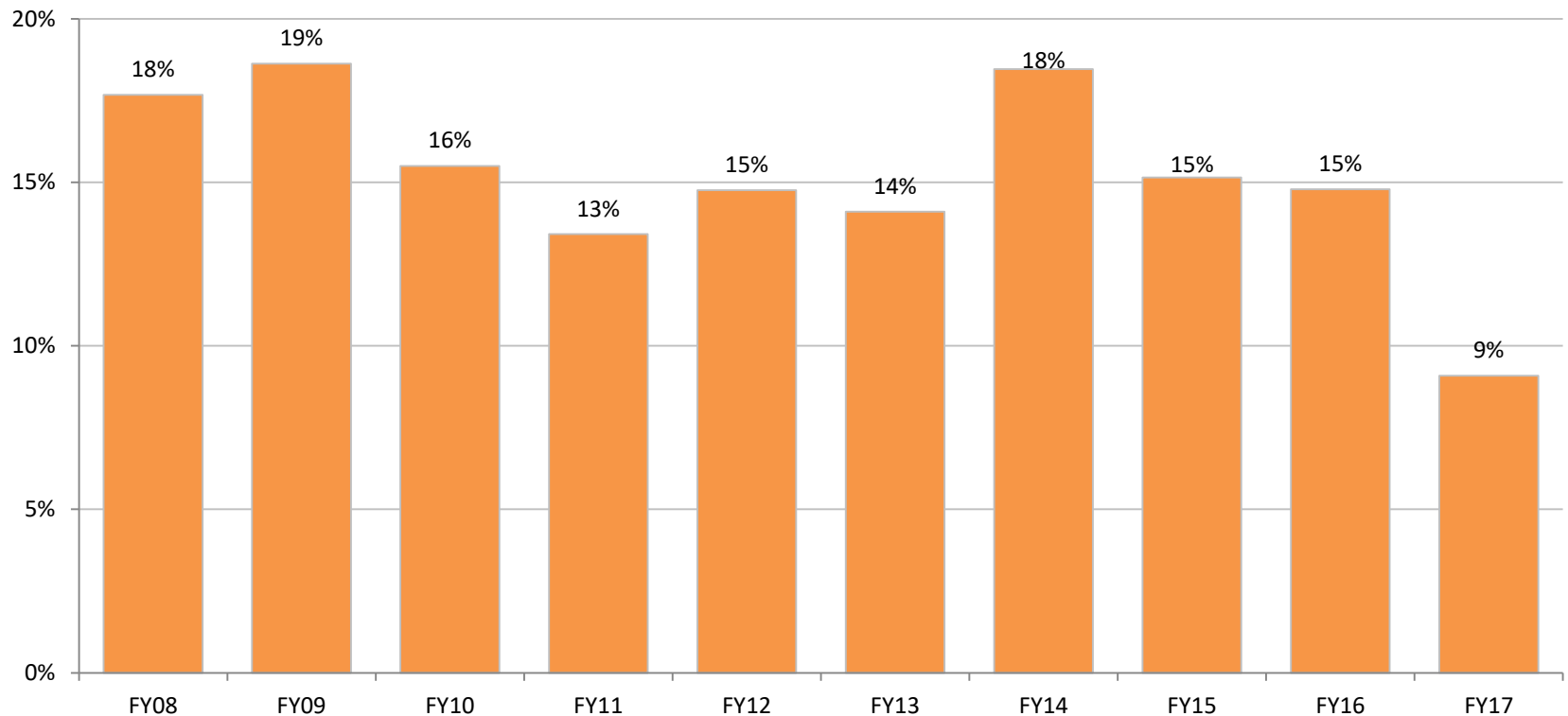
# The Rate of Juveniles Committed for Crimes of Violence has Increased in the Metro Region

- Crimes of Violence make up over a third (39%) of new commitments in FY 2017 in the Metro Region.



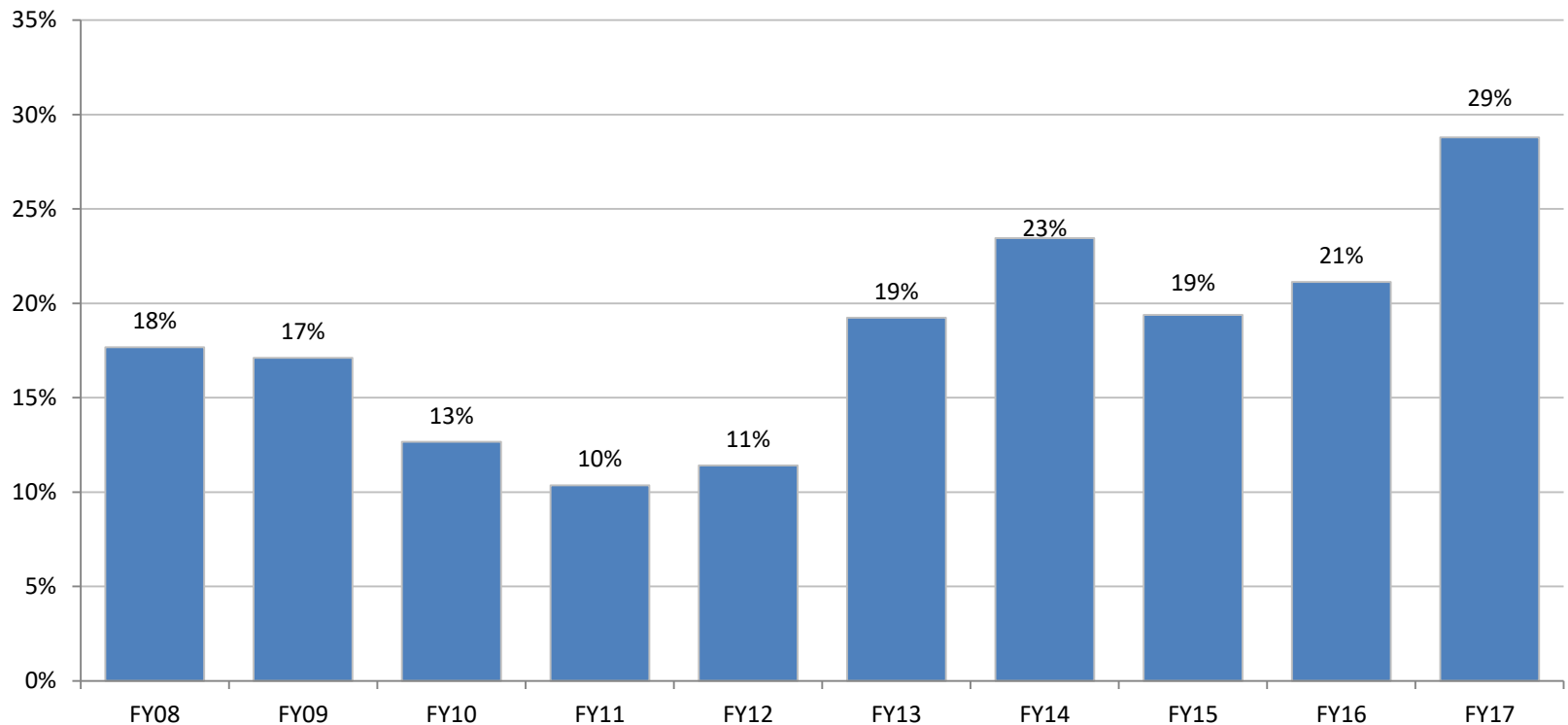
# The Rate of Juveniles Committed for Non-Violent Felonies has Remained Decreased in Recent Years

- Over ten years, the rate of juveniles committed for non-violent felonies decreased 9%.



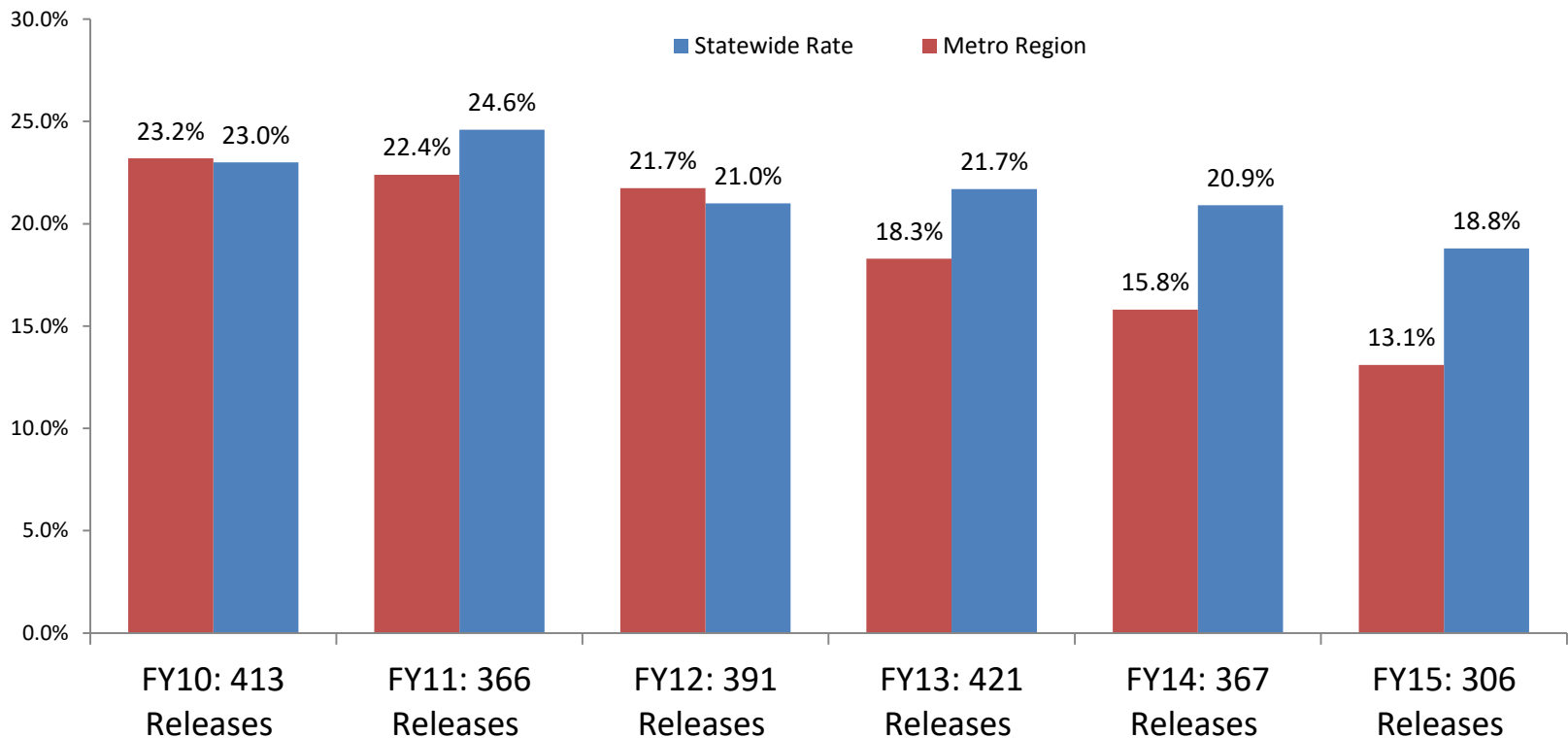
# The Rate of Juveniles Committed for Violations of Probation has Increased in the Metro Region

- The rate of new commitments for Violations of Probation increased by 11 percentage points over ten years.



# Recidivism Rates for Metro Region DJS Committed Youth Have Declined in Recent Years

- 13.1% of Metro Region youth released from committed placement in FY15 had a new offense within a year that resulted in a delinquent adjudication or criminal conviction, a decrease of 2.7 percentage points from FY14.
- The Statewide rate was 18.8% in FY15, down 2.1 percentage points from FY14.



# Recidivism Rates for Metro Region DJS Probation Youth Have Declined in The Past Year

- 12.2% of Metro Region youth placed on probation for the first time in FY15 had a new offense within a year that resulted in a delinquent adjudication or criminal conviction, a decrease of 0.2 percentage points from FY14.
- The Statewide rate was 19.1% in FY15, down 0.9 points from FY14.

