

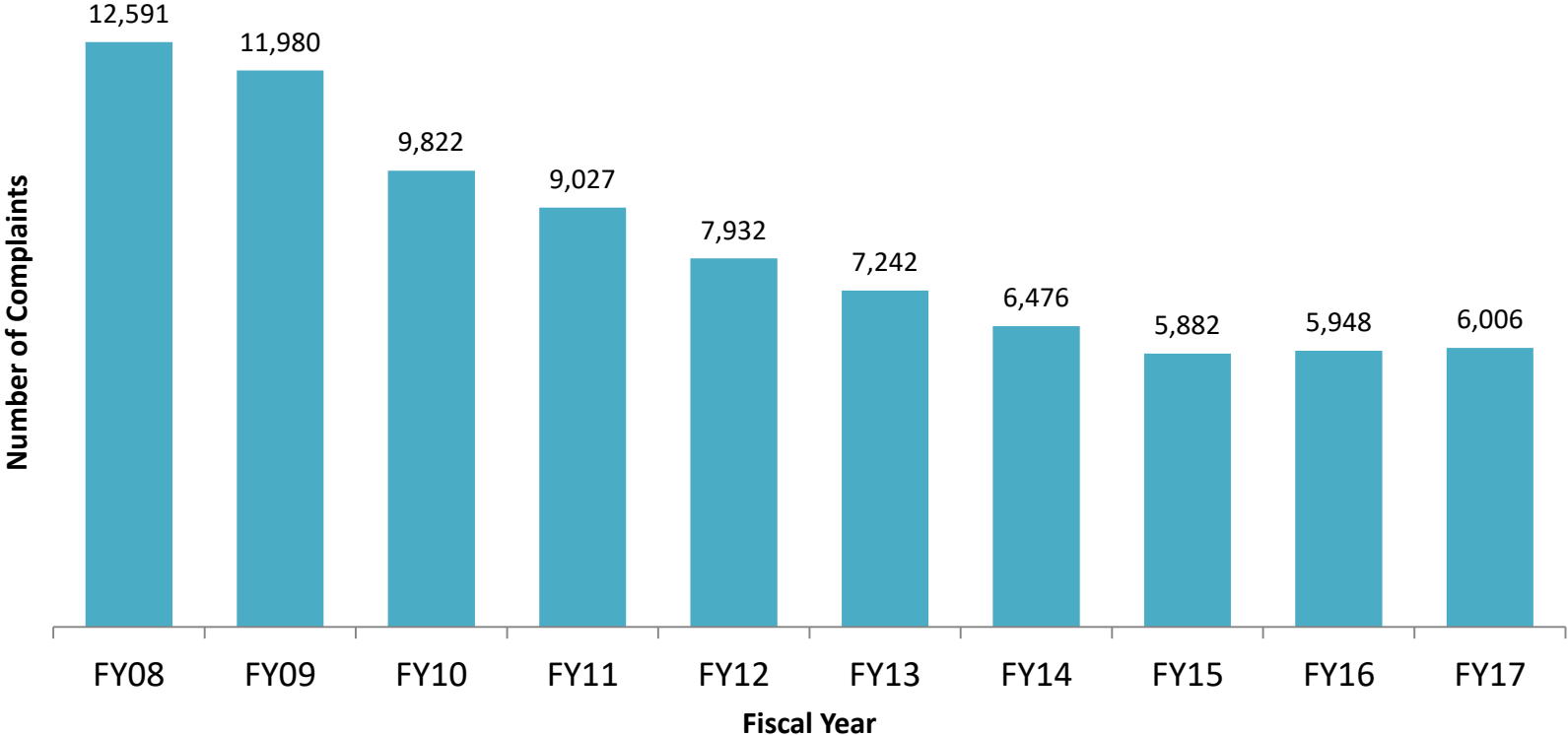


Central Region Juvenile Services Long Term Trends: Counties of Baltimore, Carroll, Harford, and Howard

DJS Office of Research and Evaluation, January 2018

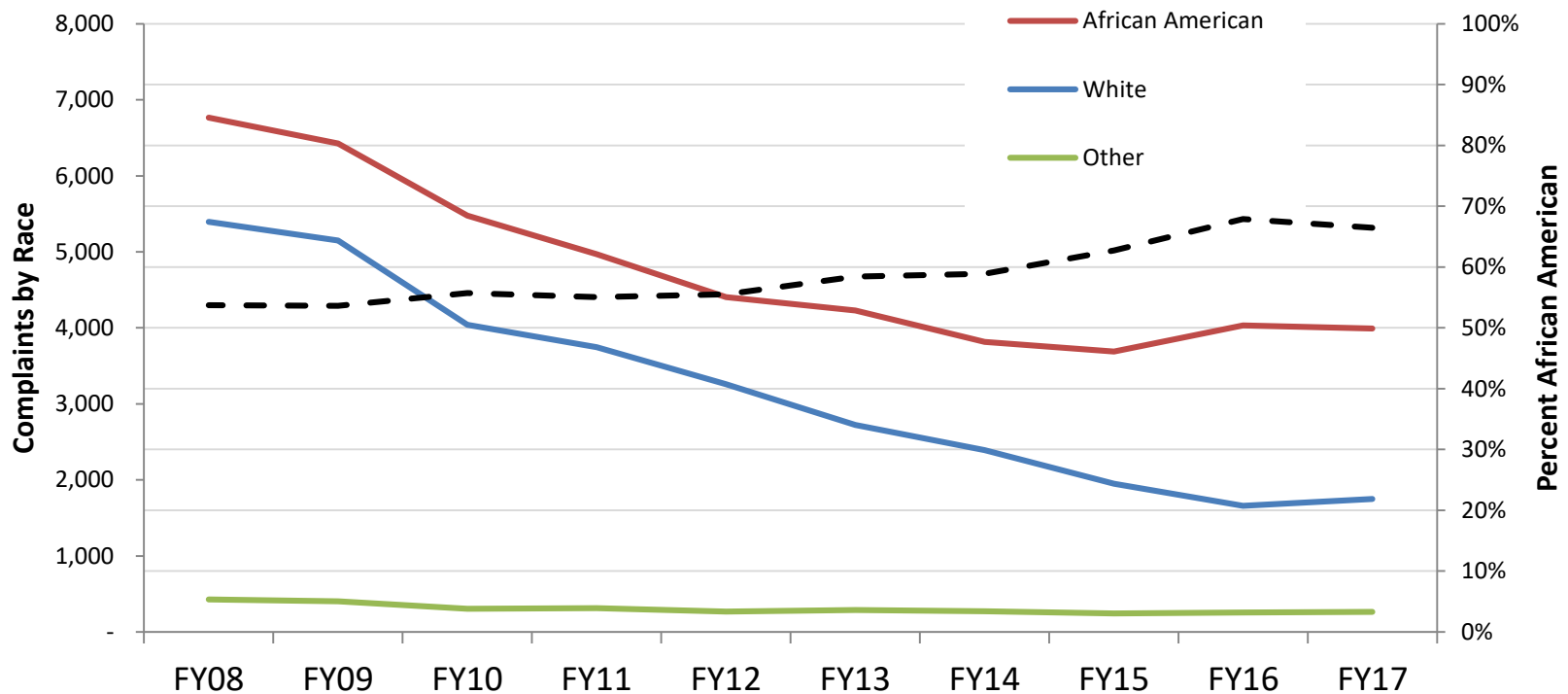
Central Region Juvenile Complaints Have Declined Significantly

- Central Region complaints referred to DJS Intake declined 52.3% in ten years.
- Statewide complaints declined 57.9% over the same period.



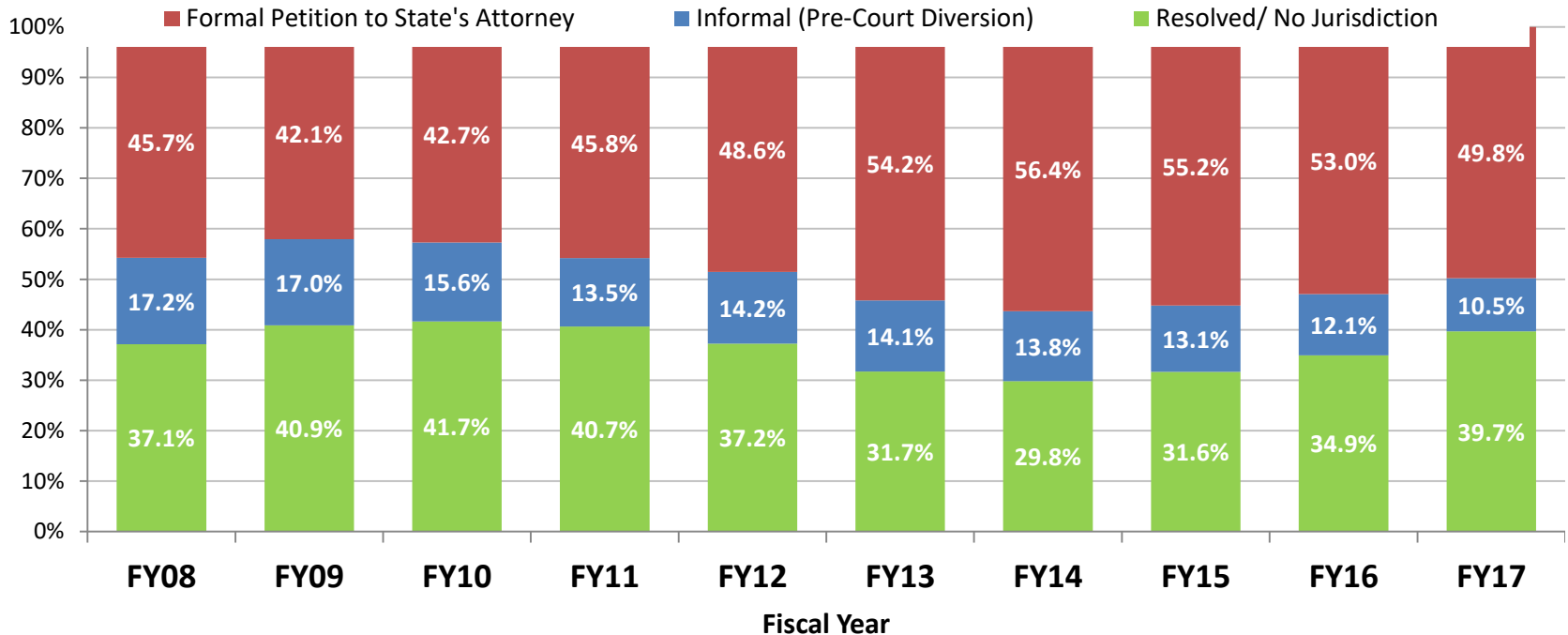
Juvenile Complaints in Central Region Have Declined for All Race/Ethnicities

- Complaints for Central Region African American youth declined 41.0%, and declined 67.6% for white youth.
- African American youth comprise 66.5% of Central Region complaints.
- African American youth comprise 24.5% of the general population.



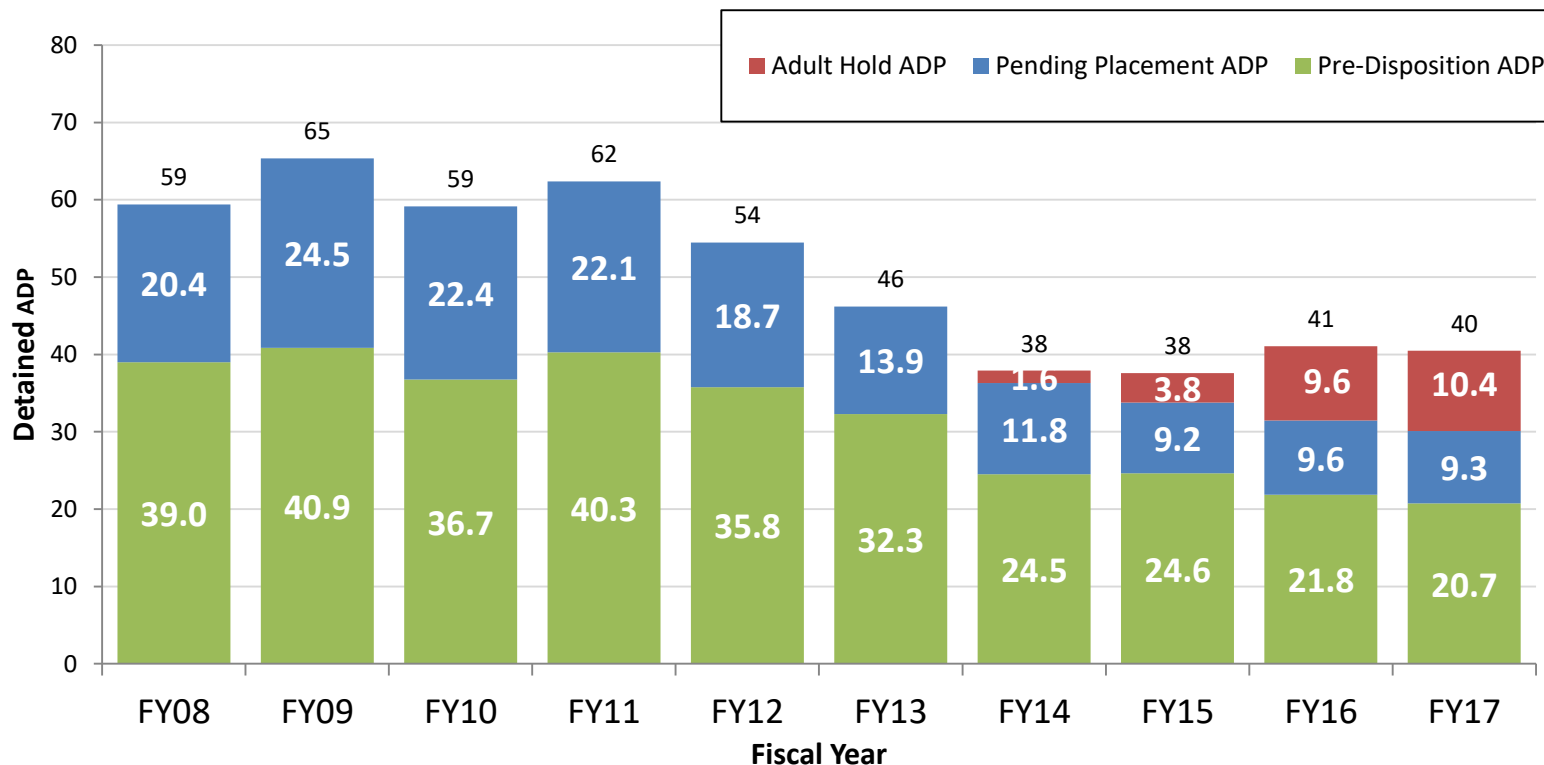
The Percent of Cases Referred to Juvenile Court by Central Region has Declined Over the Past Two Years

- 49.8% of Central Region complaints were referred to court by DJS Intake in FY17, 6.6% less than in FY14. Statewide 53.4% were referred to court.
- 10.5% of Central Region complaints were diverted to an informal (pre-court) DJS, and 39.7% were resolved or determined to have no jurisdiction. Statewide 14.6% were diverted.



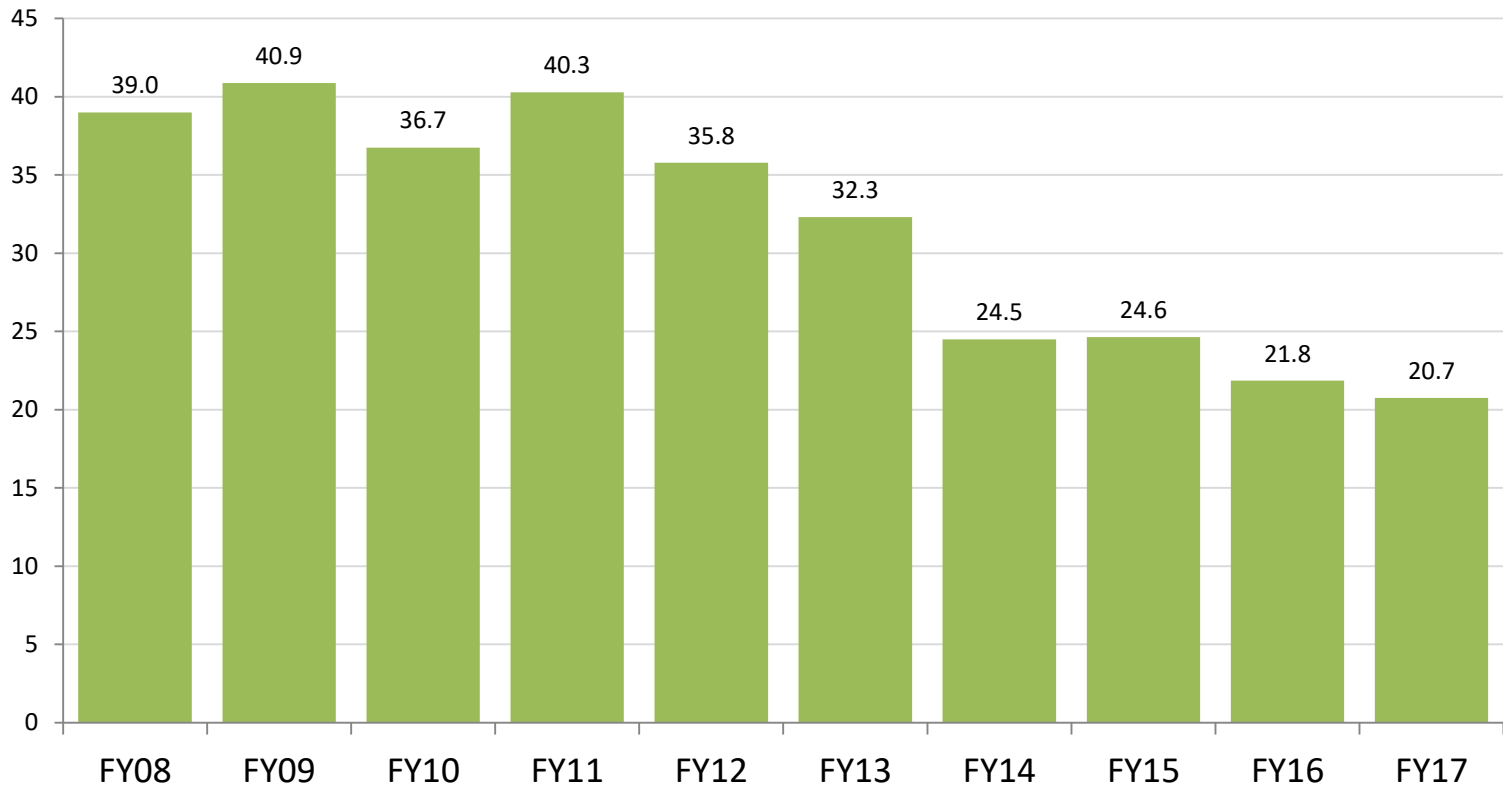
Central Region Detention Population Has Declined

- Central Region daily population in DJS detention declined 32.2% in ten years, to 40 in FY17. The statewide detention population declined 27.7% over the same period.
- Cases detained for the Adult Court now make up 26.0% of the DJS detained population in Central Region.



Central Region Youth Population In Detention Pre-Disposition Declined

- The Central Region Pre-Dispositional Juvenile Court ADP declined 18.3% in ten years to 20.7 youth in FY 2017.

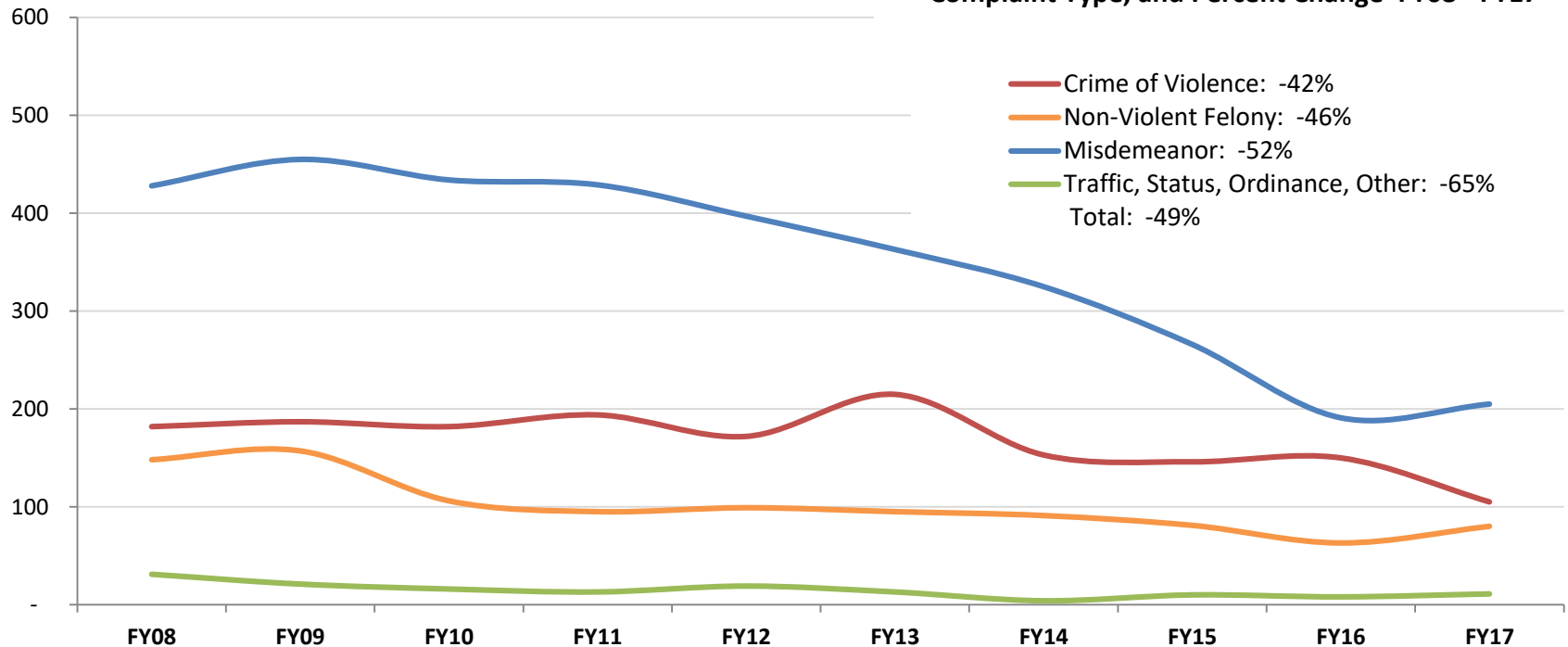


Central Region Pre-Disposition Detention Placements Have Decreased for All Complaint Types

- Youth detained pending disposition for misdemeanors has decreased 52.0% over ten years.
- Youth detained pending disposition for crimes of violence has decreased 42% over ten years.

Pre-D Detention Admissions by Complaint Type, FY08 - FY17

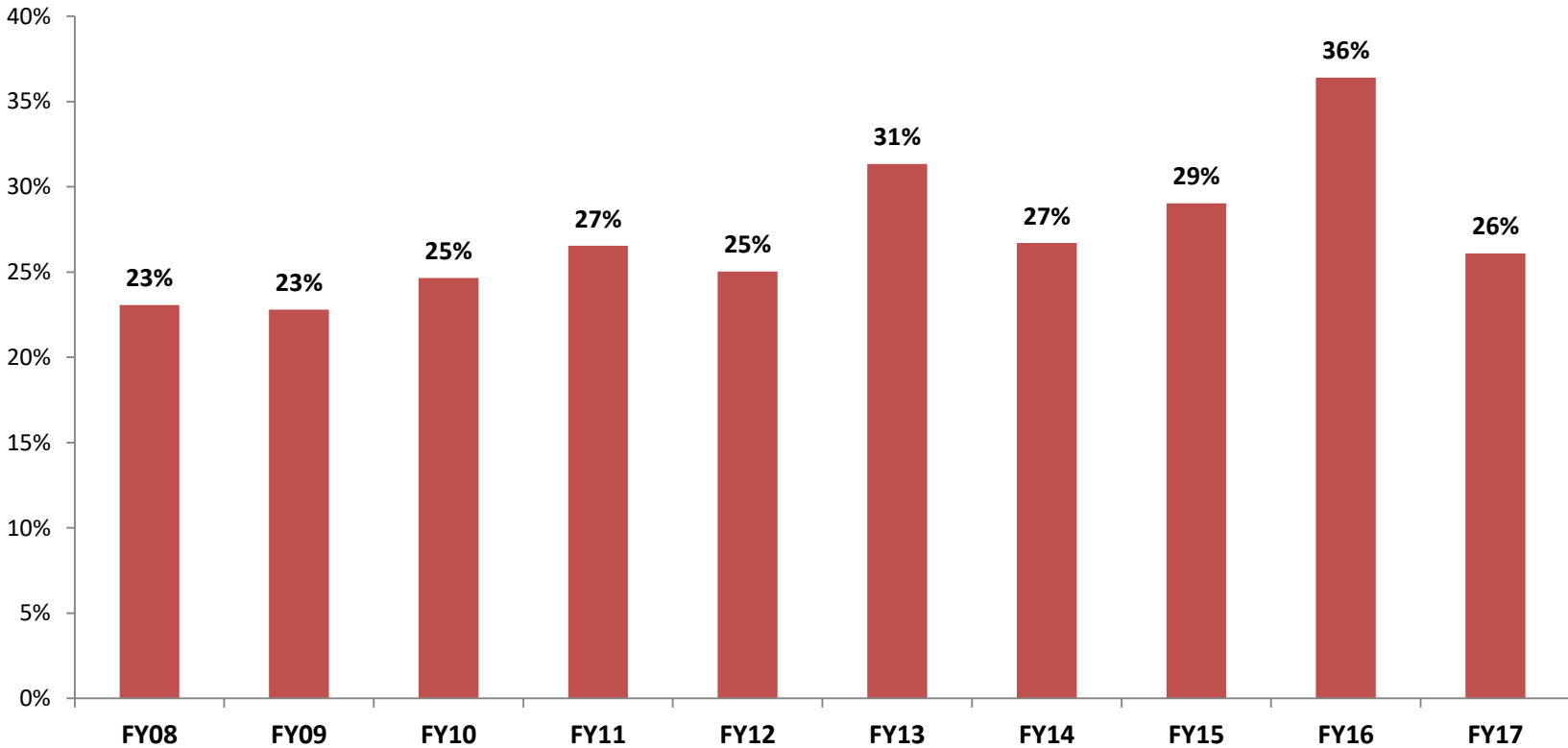
Complaint Type, and Percent Change FY08 - FY17



Crimes of Violence Make Up an Increasing Proportion of Detention Placement Offenses

- Youth detained pre-disposition for Crimes of Violence now make up 26% of detention placements which is a slight increase from FY 2007.

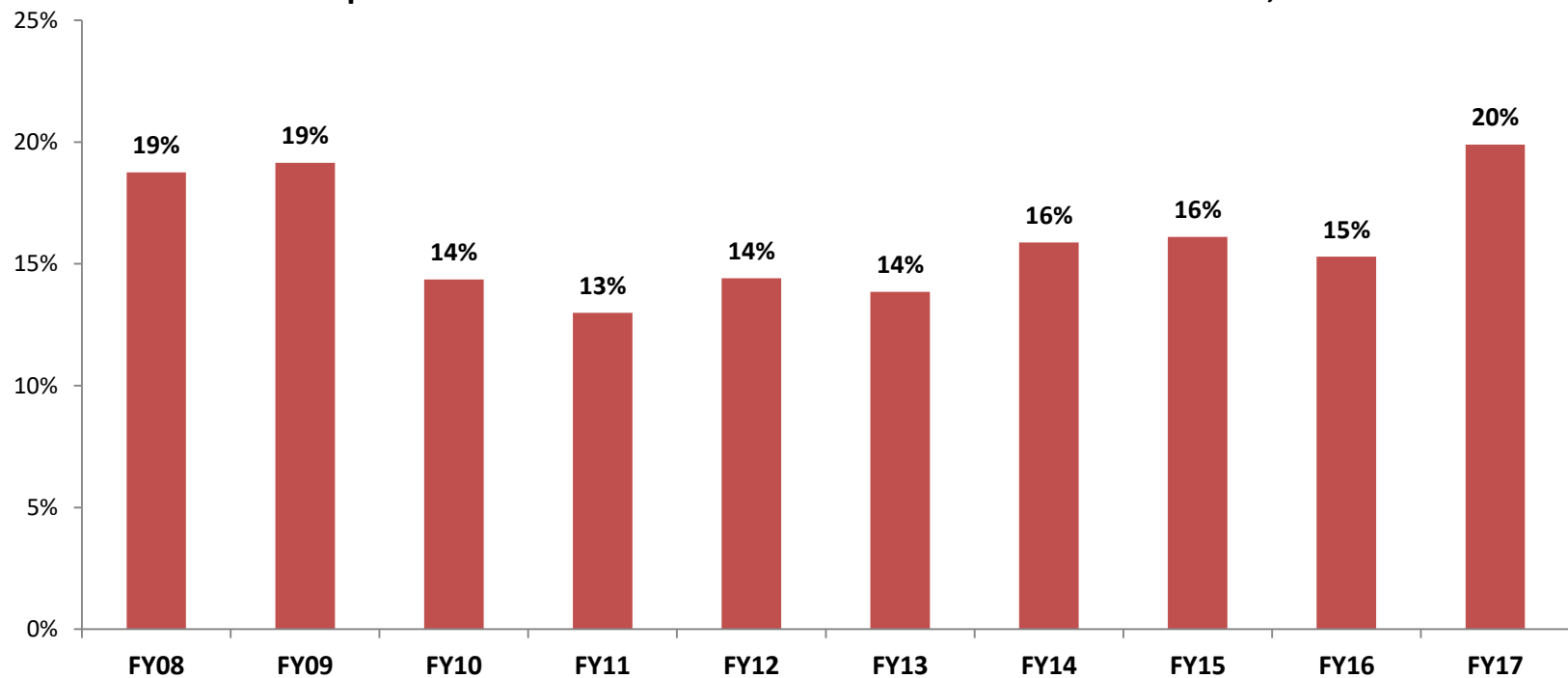
Proportion of Pre-D Detention Admissions For Crimes of Violence, FY08 - FY17



Detention Placements for Non-Violent Felonies are Declining

- The proportion of youth detained pre-disposition for Non-Violent Felony complaints has increased one percentage point over ten years.
- The detained population is increasingly comprised of youth with violent crimes complaints.

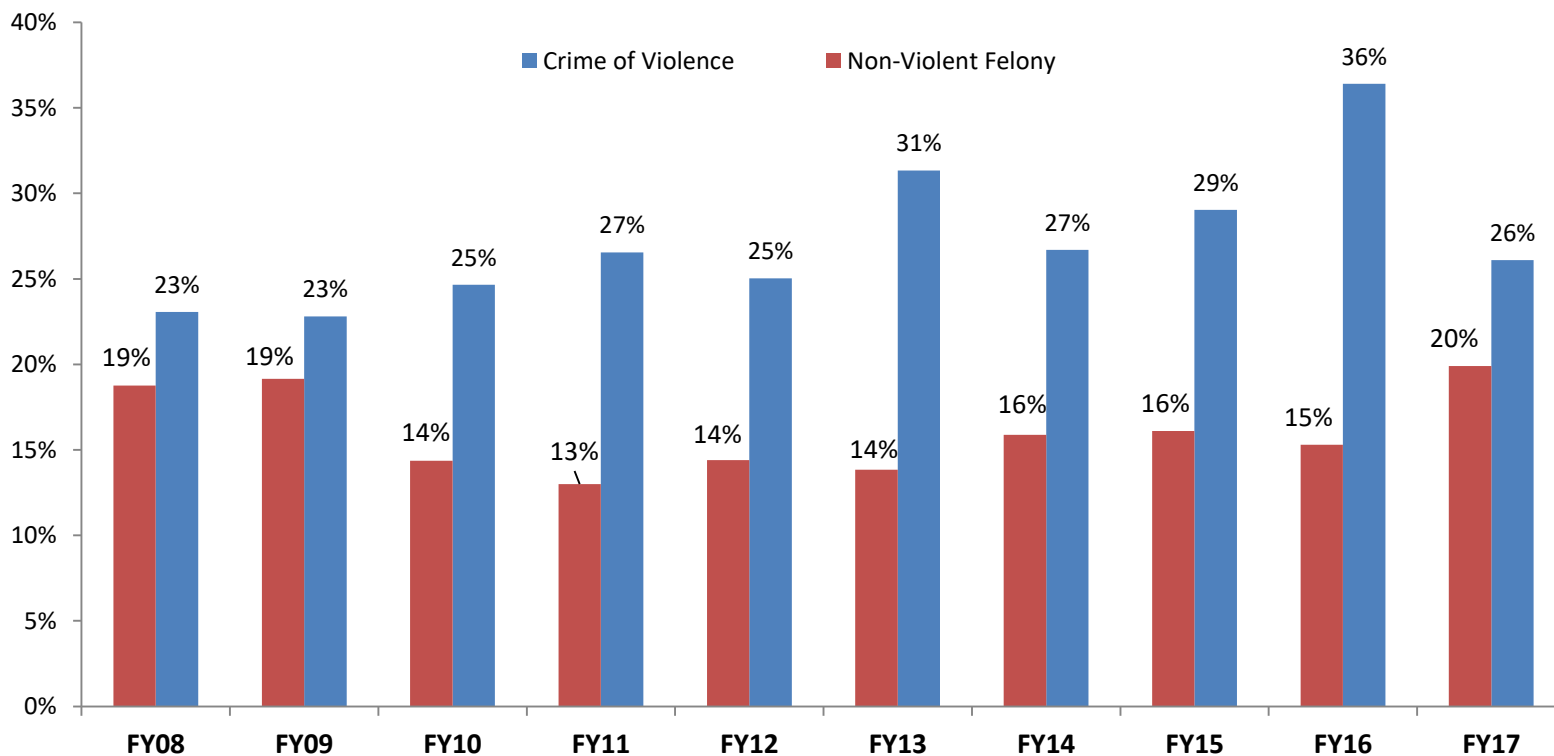
Proportion of Pre-D Detention Admissions For Crimes of Violence, FY08 - FY17



Central Region Pre-D Detention Population

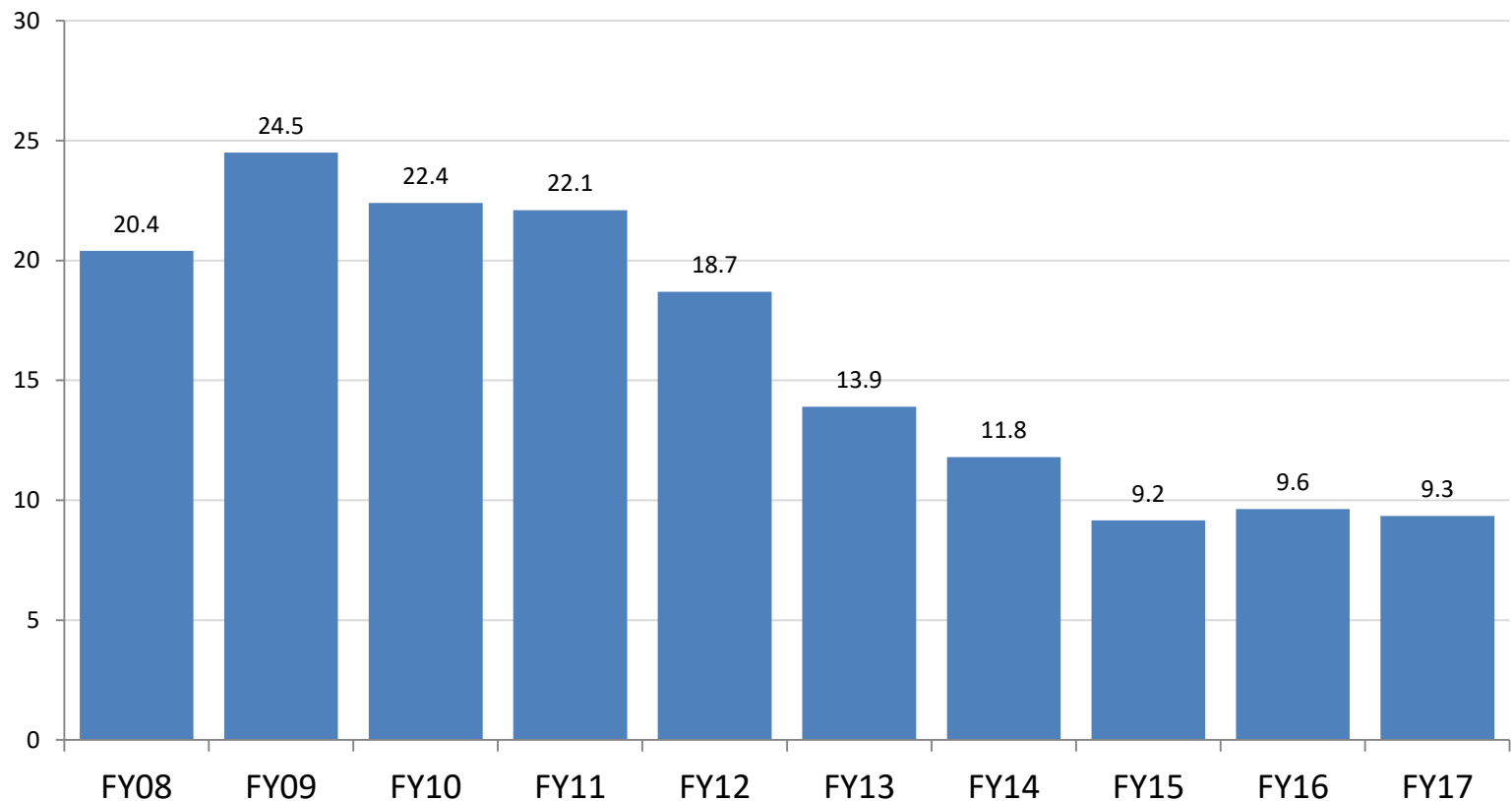
- Youth detained pre-disposition for Crimes of Violence increased 13% through FY16, then decreased 10% in FY17.
- Pre-disposition for non-violent felonies increased slightly over ten years.

Proportion of Pre-D Detention Admissions For Crimes of Violence, FY08 - FY17



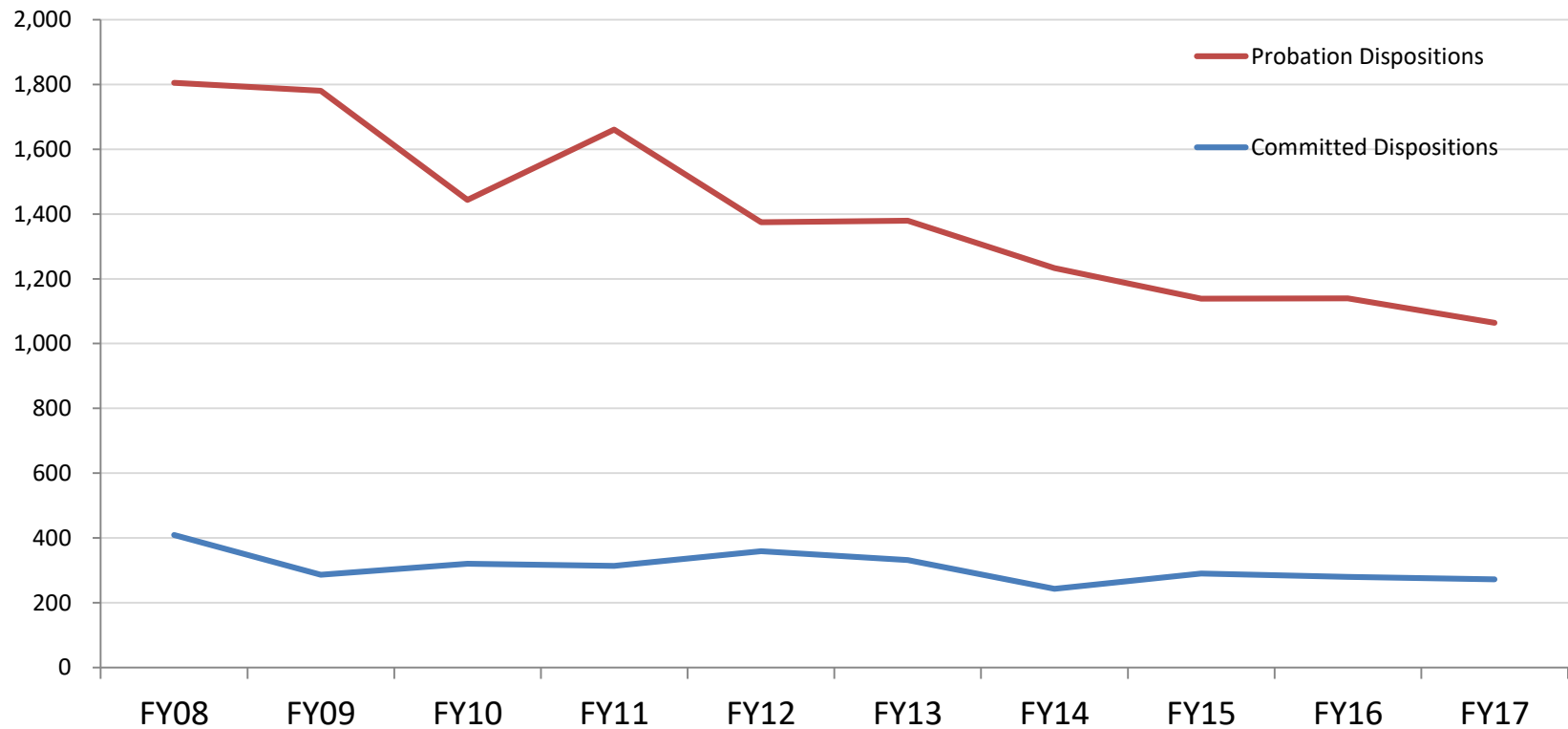
Central Region Youth In Detention Pending a Committed Placement Has Declined

- Juvenile court pending placement population declined 11.1% in ten years to 9.3 youth in FY 2017.



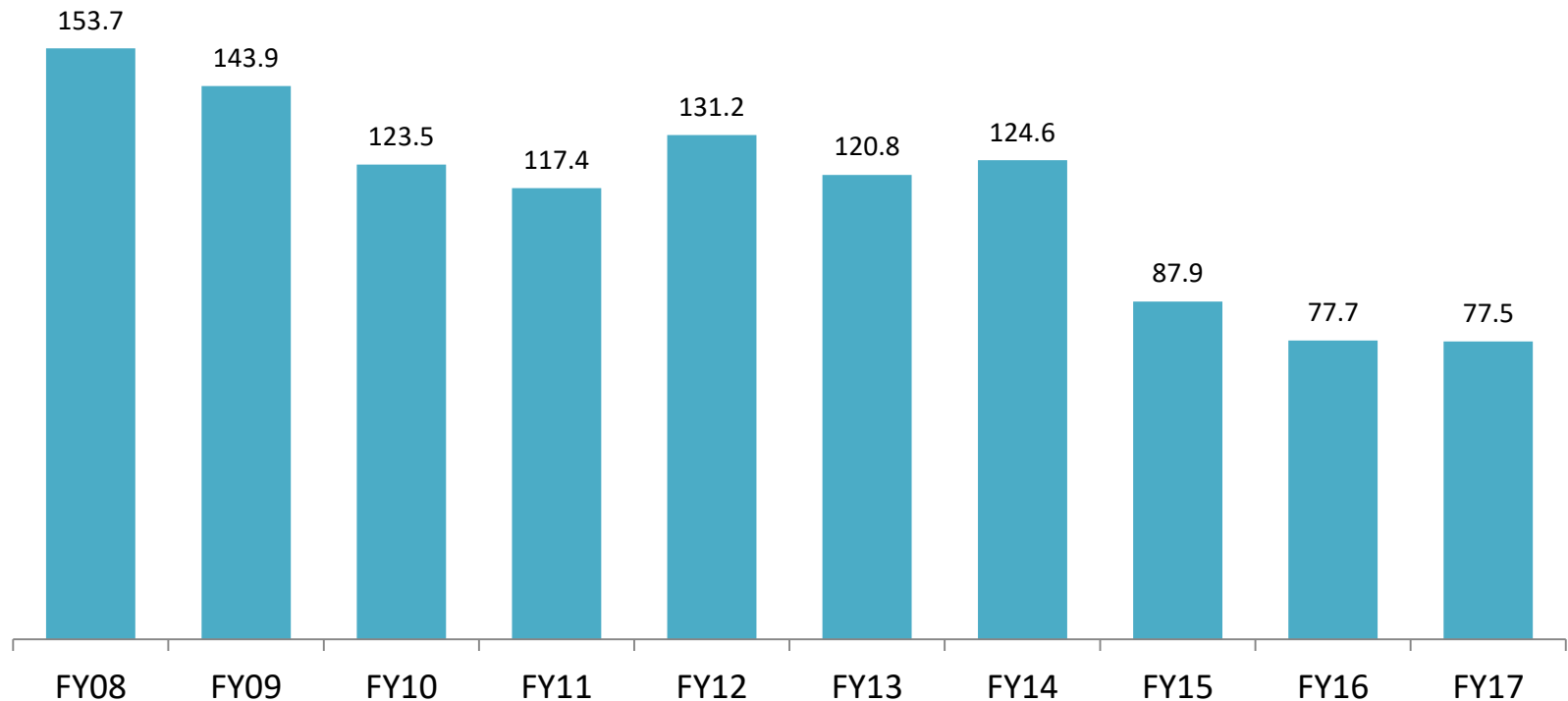
Juvenile Probation and Commitment Orders Have Declined

- Central Region Juvenile probation orders declined 41.1% in ten years. Statewide probation orders declined 54.2% over the same period.
- Central Region juvenile commitments declined 33.5% in ten years. Statewide commitments declined 34.0% over the same period.



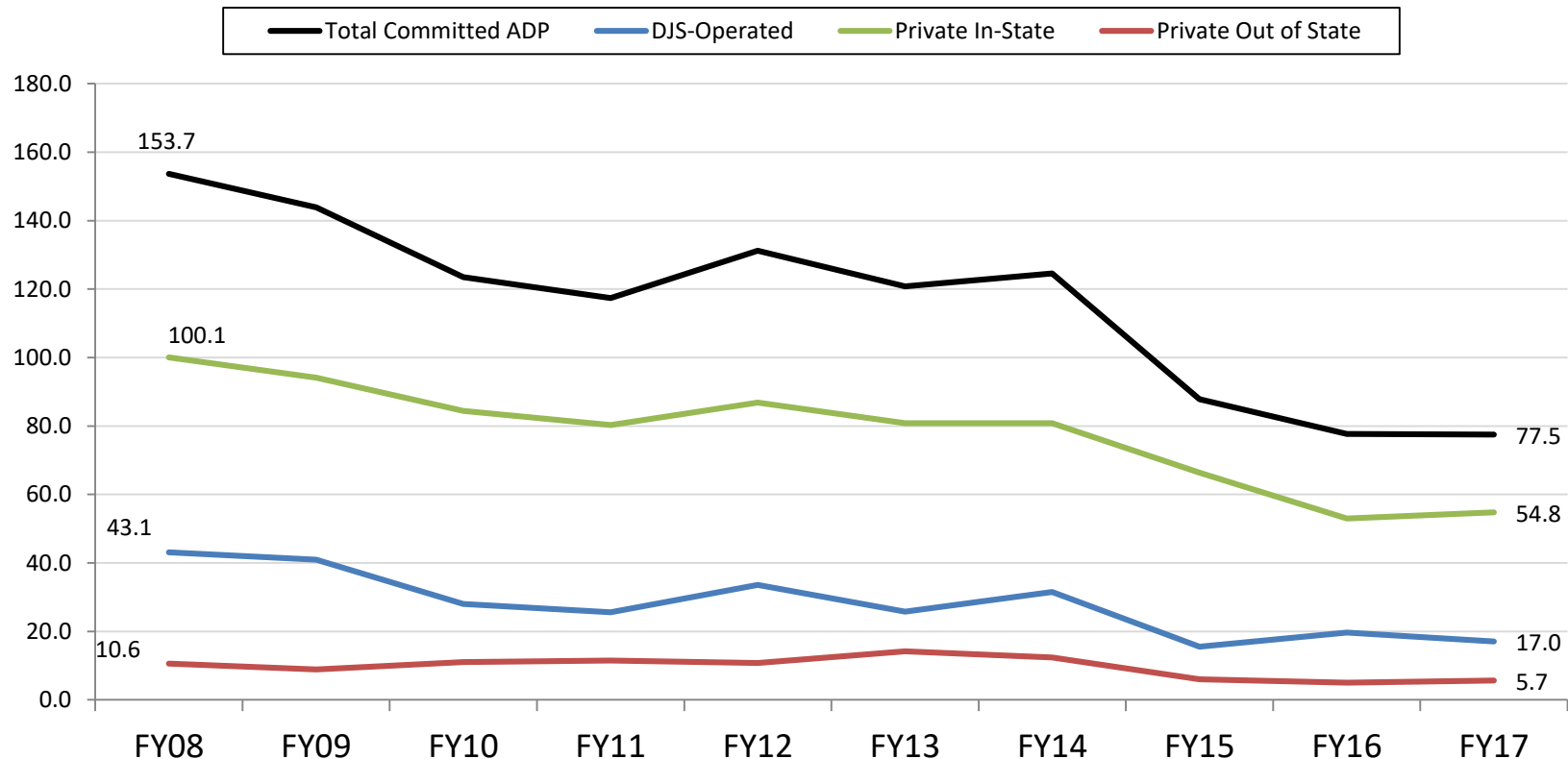
Average Committed Out of Home Population Has Declined Significantly in the Central Region

- The overall daily population of Central Region youth committed by the juvenile court to out of home placement declined 49.6% over ten years, from 153.7 in FY08 to 77.5 in FY17.
- Statewide average committed population declined 50.9% over the same period.



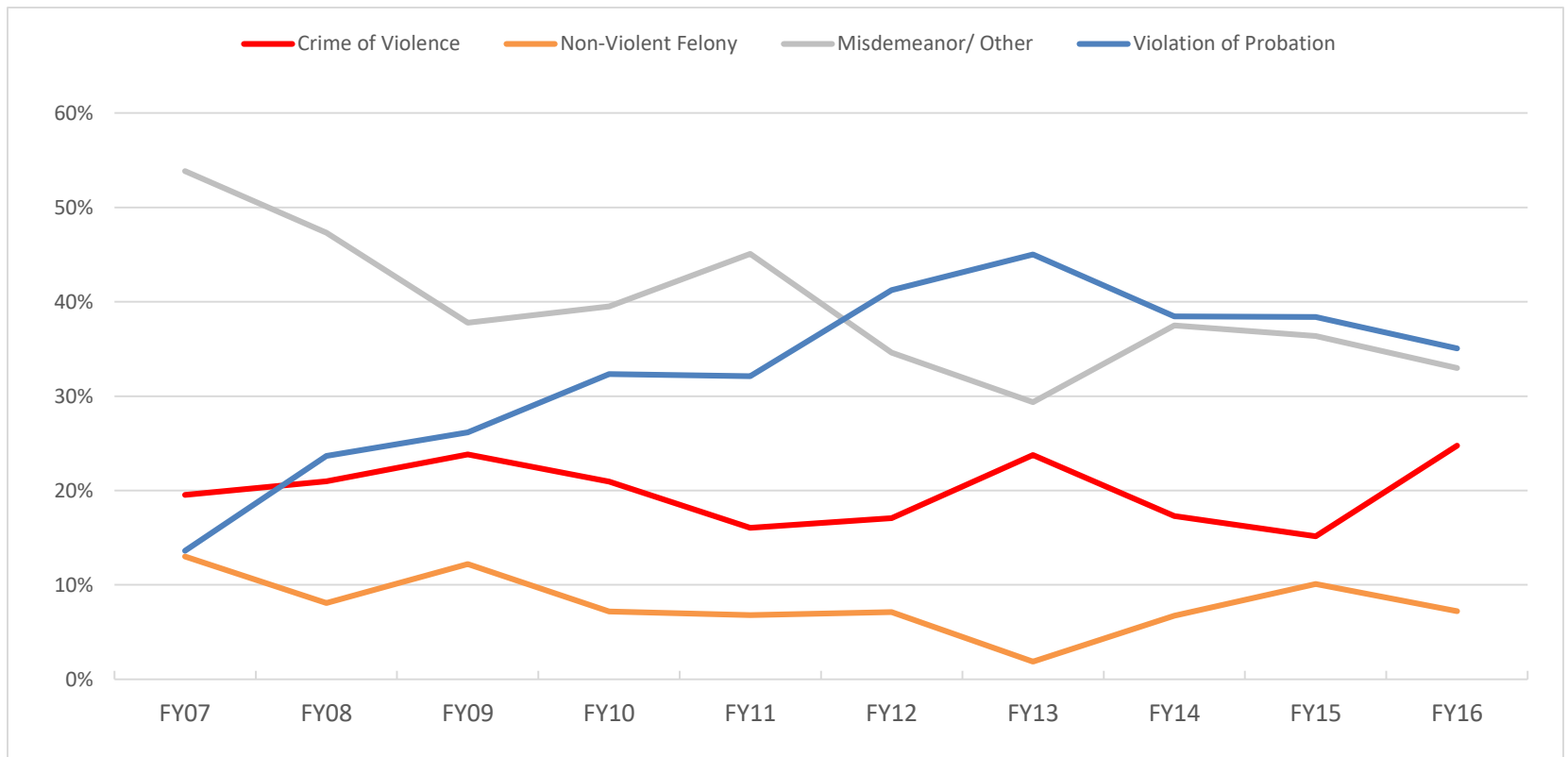
Central Region Committed Youth Population Has Declined for All Facility Types

- Overall committed out-of-home population has declined 49.6% since FY08.
- DJS-Operated ADP decreased 60.6%, and Private In-State has declined 45.3% since FY08.
- Out of State committed average population declined from the high of 14 youth in FY13, to just 5 in FY17.



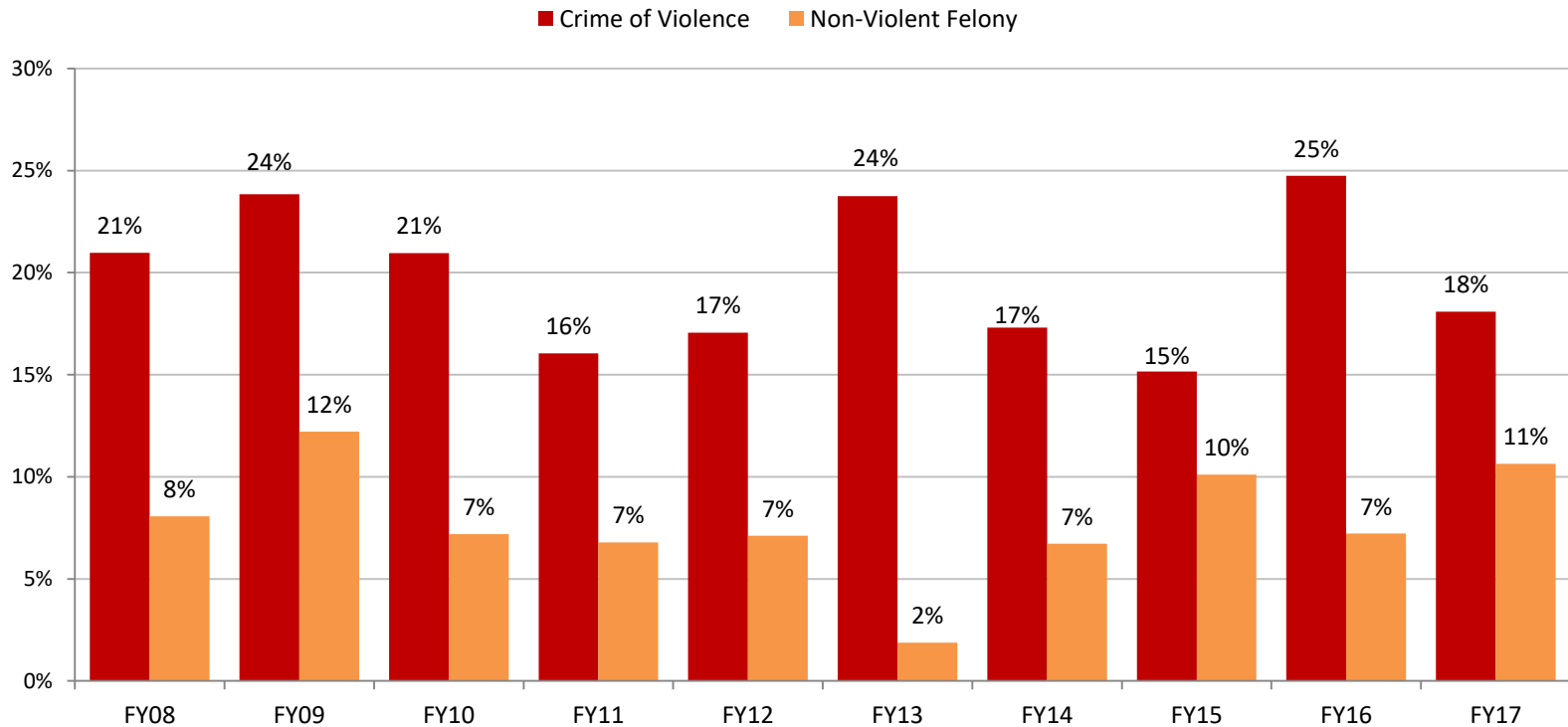
The Rate of Juveniles Committed for Low-Level Offenses Has Declined

- The proportion of new commitments for low-level offenses declined over ten years.
- The proportion of new commitments for misdemeanor and non-violent felony offenses declined over ten years with a slight increase in the last year.



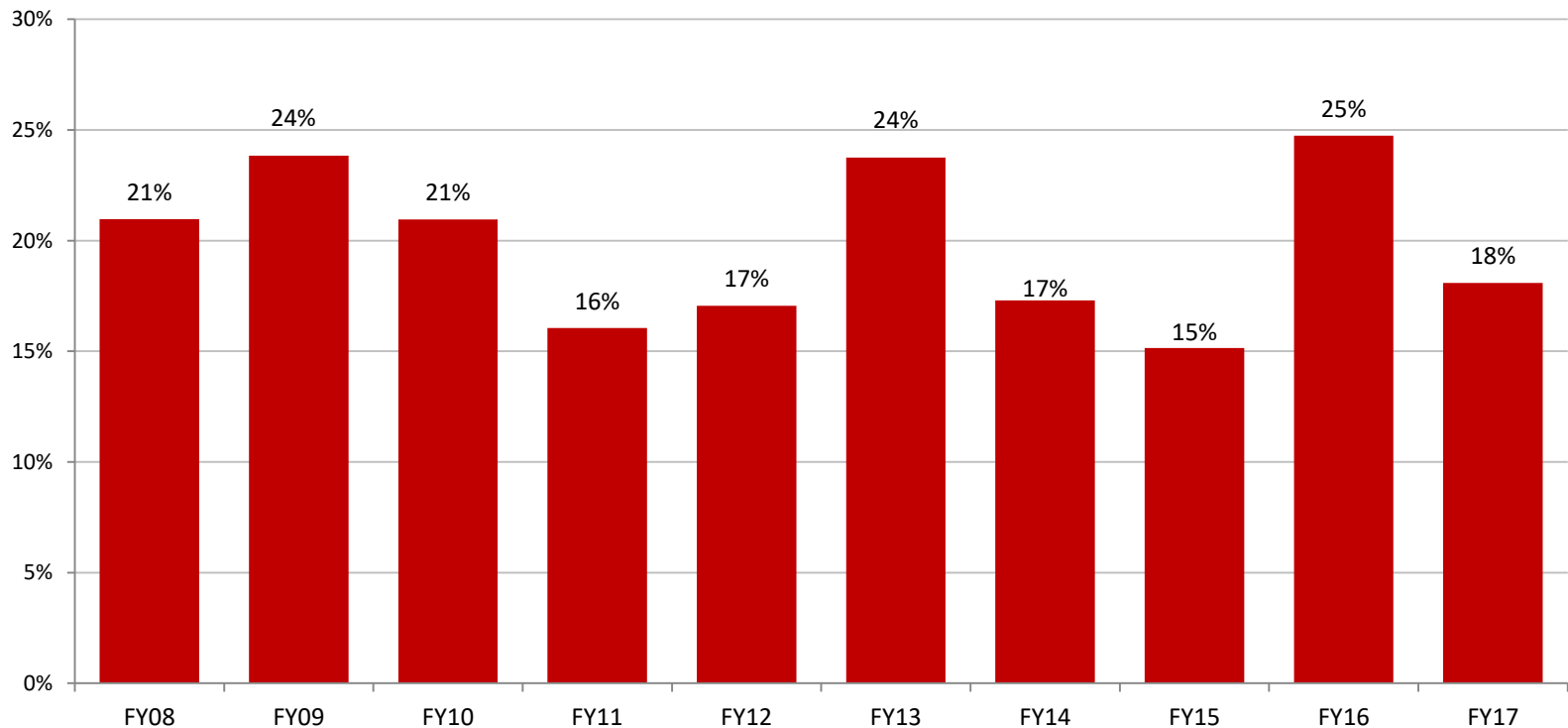
The Rate of Juveniles Committed for Crimes of Violence has Increased in the Central Region

- Crimes of Violence make up less than a quarter (18%) of new commitments in FY 2017.
- The rate of juveniles committed for Non-Violent Felonies has increased at a much slightly while commitments for Crimes of Violence decreased in the Central Region.



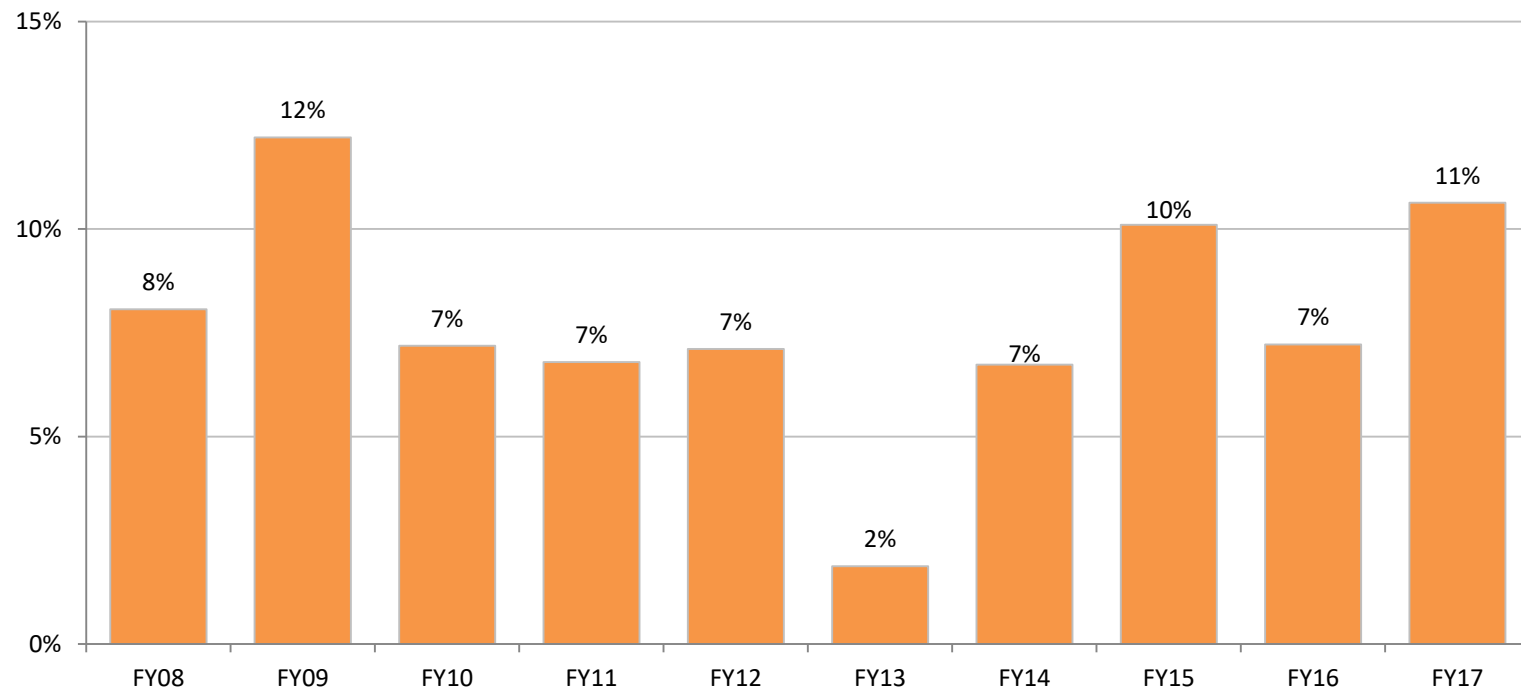
The Rate of Juveniles Committed for Crimes of Violence has Increased in the Central Region

- Crimes of Violence make up less than a quarter of new commitments in FY 2017 in the Central Region.



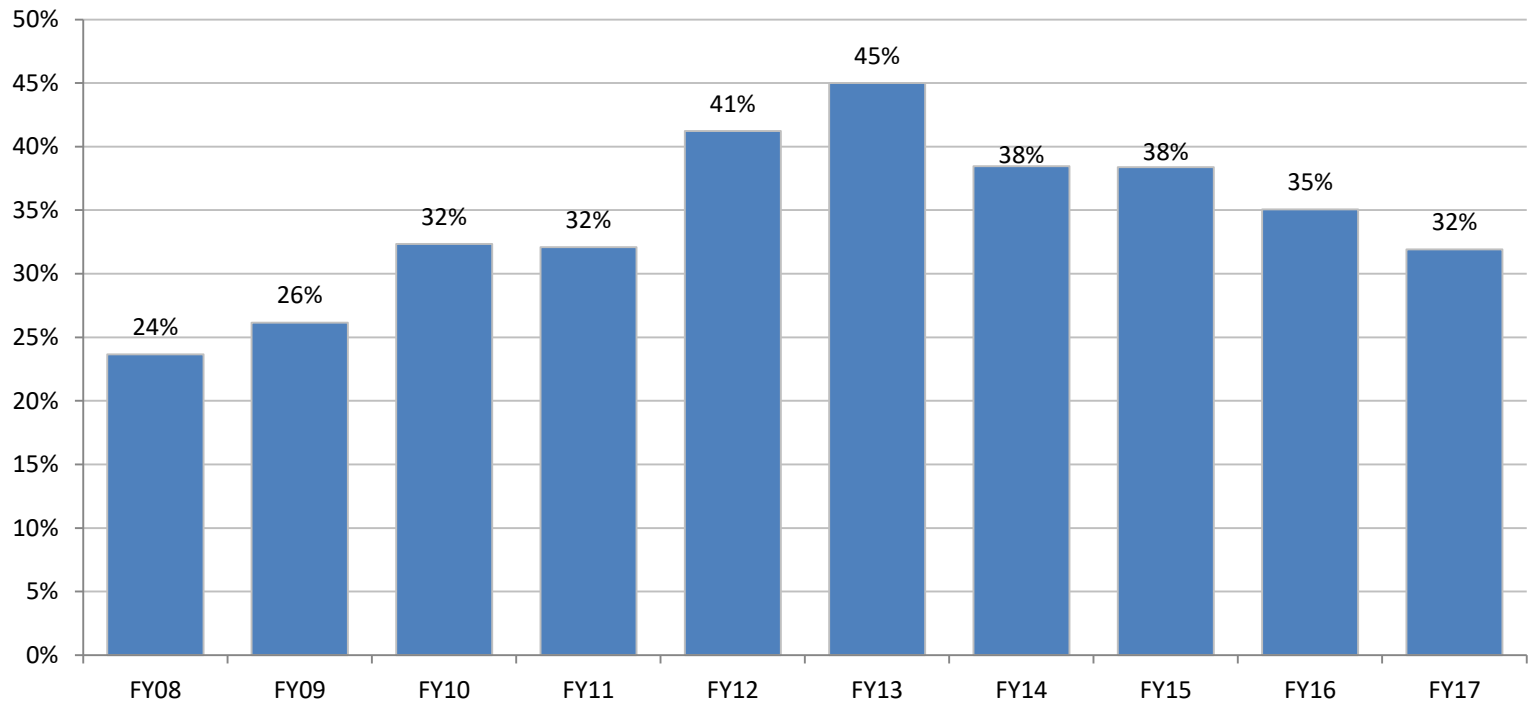
The Rate of Juveniles Committed for Non-Violent Felonies has Decreased in Central Region

- Non-violent felonies increased 3% over ten years.



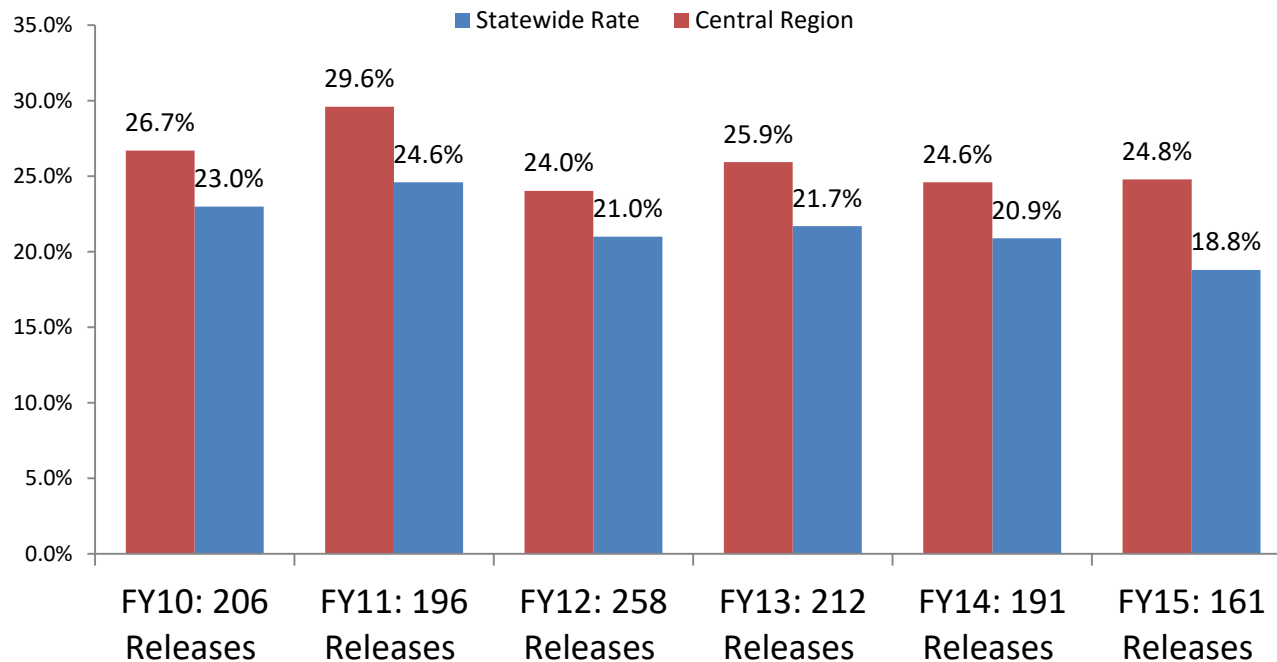
The Rate of Juveniles Committed for Violations of Probation has Declined in the Central Region

- After increasing from FY 2008 through FY 2013, the rate of new commitments for Violations of Probation has decreased 13 percentage points to 32% in FY 2017.



Recidivism Rates for Central Region DJS Committed Youth Have Decreased in Recent Years

- 24.8% of Central Region youth released from committed placement in FY15 had a new offense within a year that resulted in a delinquent adjudication or criminal conviction, an increase of 0.2 percentage points from FY14 and 4.8 percentage points from FY11.
- The Statewide rate was 18.8% in FY15, down 2.1 percentage points from FY14.



Recidivism Rates for Central Region DJS Probation Youth Have Declined in The Past Year

- 19.7% of Central Region youth placed on probation for the first time in FY15 had a new offense within a year that resulted in a delinquent adjudication or criminal conviction, a decrease of 0.6 percentage points from FY14.
- The Statewide rate was 18.2% in FY15, down 0.9 percentage points from FY14.

