

INTRODUCTION

The Maryland Department of Juvenile Service's Office Research and Planning Unit is pleased to present its 2003 Annual Statistical Report. The Annual Statistical Report brings together, in a single volume, descriptive statistics¹ of the Maryland Department of Juvenile Service (DJS). This report serves as an essential reference book. The numbers contained in this report are used in capital planning, three-year planning and budget documents. Executive, professional, and legislative staff as well as the public relies on these statistics. The Annual Statistical Report contains two sections.

Section One of the report provides the intake profile, which includes case-related information from referral to the court disposition stage. In FY 2003, the Department's Intake Officers handled 53,502 cases. This number of cases represents 34,806 youth. The intake process determines if a youth requires formal court intervention or can be served by pre-court supervision or by processes known as resolving or disapproving the case at intake. A case is counted each time a youth is referred on a new charge during the year.

Section Two provides information about services provided to youths in nonresidential and residential programs. This section contains statistics on DJS contracted programs, community supervision, residential services and secure commitment programs. In FY 2003, the Department served 5,558 youths in out of home placements, including secure detention programs. A separate table of contents is provided for Sections One and Two.

¹

The statistics included in this report have been subject to a detailed quality assurance process that involved removing erroneous cases and minimizing the occurrences of missing data. Because of this quality assurance review, the statistics presented in this report may slightly vary from those included in earlier Departmental documents.

Section One

Intake Data

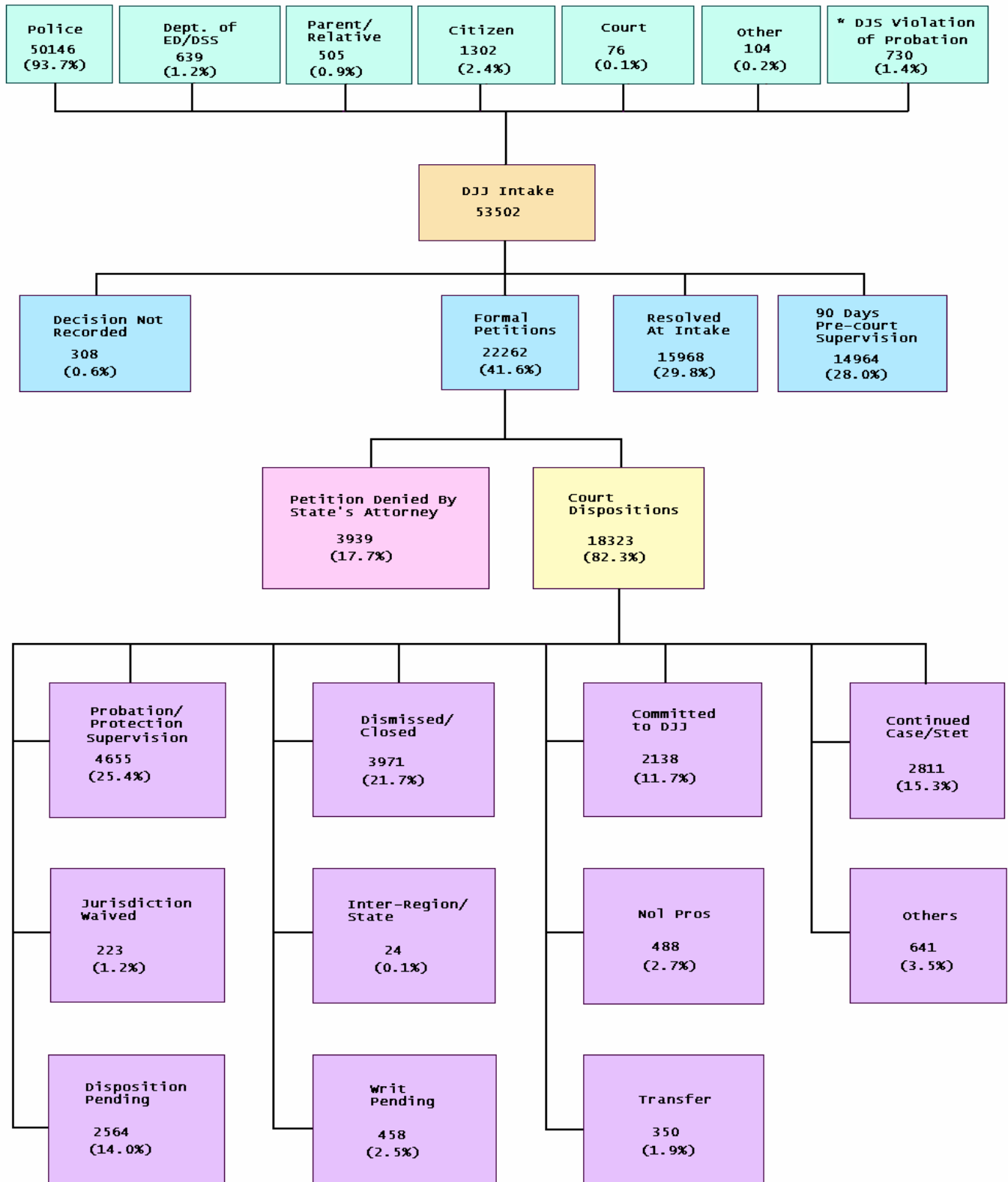
TABLE OF CONTENTS

SECTION ONE

	Page
FLOWCHART OF CASE REFERRALS	i
Table 1 Number and Percent of Intake cases by County of Jurisdiction and by Area: FY 2001 - FY 2003.....	1
Table 2 Manner of Handling Referrals at Intake by Jurisdiction and by Area: FY 2003	2
Table 3 Rank Order of Formal Cases by County of Jurisdiction: FY 2003	3
Table 4 Number and Percent of Total Intake Cases by Race: FY 2003.....	3
Table 5 Intake Cases by Race and by County of Jurisdiction: FY 2003.....	4
Table 6 Manner of Handling Intake Cases by Race and County of Jurisdiction: FY 2003	5
Table 6 Manner of Handling Intake Cases by Race and County of Jurisdiction: FY 2003	6
Table 7 Number and Percent of Total Intake Cases by Gender: FY 2003	7
Table 8 Manner of Handling Intake Cases by Gender and County of Jurisdiction: FY 2003.....	8
Table 9 Intake Cases by Race, Gender and County of Jurisdiction: FY 2003	9
Table 10 Number and Percent of Total Intake Cases by Age: FY 2003	10
Table 11 Intake Cases by Age and County of Jurisdiction: FY 2003	11
Table 12 Intake Cases by Age and County of Jurisdiction for African American Youth: FY 2003.....	12
Table 13 Intake Cases by Age and County of Jurisdiction for Caucasian Youth: FY 2003	13
Table 14 Intake Cases by Age and County of Jurisdiction for Other Race Group Youth: FY 2003.....	14
Table 15 Intake Cases by Age and County of Jurisdiction for Males: FY 2003.....	15
Table 16 Intake Cases by Age and County of Jurisdiction for Females: FY 2003	16
Table 17 Number & Percent of Total Intake Cases by Referral Source: FY 2003	17
Table 18 Intake Cases by Referral Source & County of Jurisdiction: FY 2003	17
Table 19 Intake Cases – Offenses by Offense Type: FY 2001 – FY 2003	18
Table 20 Intake Cases by Alleged Offenses & County of Jurisdiction: FY 2003	19
Table 20 Intake Cases by Alleged Offenses & County of Jurisdiction: FY 2003	20

Table 20	Intake Cases by Alleged Offenses & County of Jurisdiction: FY 2003	21
Table 21	Intake Cases by Alleged Offenses & County of Jurisdiction for African American Youth: FY 2003	22
Table 21	Intake Cases by Alleged Offenses & County of Jurisdiction for African American Youth: FY 2003	23
Table 21	Intake Cases by Alleged Offenses & County of Jurisdiction for African American Youth: FY 2003	24
Table 22	Intake Cases by Alleged Offenses & County of Jurisdiction for Caucasian Youth: FY 2003	25
Table 22	Intake Cases by Alleged Offenses & County of Jurisdiction for Caucasian Youth: FY 2003	26
Table 22	Intake Cases by Alleged Offenses & County of Jurisdiction for Caucasian Youth: FY 2003	27
Table 23	Intake Cases by Alleged Offenses & County of Jurisdiction for All Other Youth: FY 2003	28
Table 23	Intake Cases by Alleged Offenses & County of Jurisdiction for All Other Youth: FY 2003	29
Table 23	Intake Cases by Alleged Offenses & County of Jurisdiction for All Other Youth: FY 2003	30
Table 24	Intake Cases by Alleged Offenses & County of Jurisdiction for Males: FY 2003	31
Table 24	Intake Cases by Alleged Offenses & County of Jurisdiction for Males: FY 2003	32
Table 24	Intake Cases by Alleged Offenses & County of Jurisdiction for Males: FY 2003	33
Table 25	Intake Cases by Alleged Offenses & County of Jurisdiction for Females: FY 2003	34
Table 25	Intake Cases by Alleged Offenses & County of Jurisdiction for Females: FY 2003	35
Table 25	Intake Cases by Alleged Offenses & County of Jurisdiction for Females: FY 2003	36
Table 26	Alleged Offense Rates Per 1,000 Population by Offense Category & County of Jurisdiction: FY 2003	37
Table 27	Rates of Total and Delinquent Referrals Per 1,000 Youth Population: FY 2003	38
Table 28	Court Dispositions of Formalized Cases by Gender : FY 2003.....	39
Table 29	Court Dispositions of Formalized Cases by Race : FY 2003	40
Table 30	Court Disposition Cases by County of Jurisdiction : FY 2003.....	41

Flowchart of Case Referrals in the Maryland Juvenile Services System
FY 2003



*DJS started tracking the violation of probation cases during this year. This may not be the full count for this category because no validity checks are made on this field yet.

Table 1
Number and Percent of Intake Cases by County of Jurisdiction and by Area
FY 2001 - FY 2003

Area	2001 Cases	Percent of Cases	2002 Cases	Percent of Cases	2003 Cases	Percent of Cases	Percent Change '02 to '03
Baltimore City	9600	18.3	12055	22.2	12253	22.9	1.6%
Area 1 Total	9600	18.3	12055	22.2	12253	22.9	1.6%
Baltimore	7972	15.2	7408	13.7	6938	13.0	-6.3%
Carroll	1291	2.5	1320	2.4	1351	2.5	2.3%
Harford	1812	3.5	2173	4.0	2230	4.2	2.6%
Howard	2353	4.5	2038	3.8	1541	2.9	-24.4%
Area 2 Total	13428	25.6	12939	23.9	12060	22.5	-6.8%
Allegany	1085	2.1	1009	1.9	1062	2.0	5.3%
Frederick	1842	3.5	2234	4.1	1947	3.6	-12.8%
Garrett	213	0.4	254	0.5	279	0.5	9.8%
Montgomery	3450	6.6	4202	7.7	4045	7.6	-3.7%
Washington	1393	2.7	1543	2.8	1523	2.8	-1.3%
Area 3 Total	7983	15.2	9242	17.0	8856	16.6	-4.2%
Caroline	548	1.0	571	1.1	602	1.1	5.4%
Cecil	977	1.9	1134	2.1	1234	2.3	8.8%
Dorchester	644	1.2	638	1.2	676	1.3	6.0%
Kent	405	0.8	338	0.6	372	0.7	10.1%
Queen Anne's	543	1.0	503	0.9	500	0.9	-0.6%
Somerset	271	0.5	269	0.5	319	0.6	18.6%
Talbot	489	0.9	481	0.9	495	0.9	2.9%
Wicomico	1787	3.4	1647	3.0	1816	3.4	10.3%
Worcester	1765	3.4	1398	2.6	1395	2.6	-0.2%
Area 4 Total	7429	14.2	6979	12.9	7409	13.8	6.2%
Anne Arundel	5487	10.5	5423	10.0	5211	9.7	-3.9%
Calvert	868	1.7	934	1.7	948	1.8	1.5%
Charles	1614	3.1	1498	2.8	1681	3.1	12.2%
Prince George's	4914	9.4	4120	7.6	4163	7.8	1.0%
St. Mary's	1070	2.0	997	1.8	883	1.7	-11.4%
Area 5 Total	13953	26.6	12972	23.9	12886	24.1	-0.7%
Out of State	48	0.1	55	0.1	38	0.1	-30.9%
State Total	52441	100.0	54242	100.0	53502	100.0	-1.4%

**Table 2
Manner of Handling Referrals at Intake by Jurisdiction and by Area
FY 2003**

Area	Formal Petition	Percent Formal Petition	90 Days Pre Court Supervision	Percent 90 Days Pre Court Supervision	Resolved at Intake	Percent Resolved at Intake	No Jurisdiction	Percent No Jurisdiction	Decision Not Recorded	Percent Decision Not Recorded	Jurisdiction Total	Percent Jurisdiction Total
Baltimore City	7180	58.6	1875	15.3	2709	22.1	324	2.6	165	1.3	12253	100.0
Area 1 Total	7180	58.6	1875	15.3	2709	22.1	324	2.6	165	1.3	12253	100.0
Baltimore	3769	54.3	1352	19.5	1725	24.9	77	1.1	15	0.2	6938	100.0
Carroll	479	35.5	375	27.8	456	33.8	37	2.7	4	0.3	1351	100.0
Harford	703	31.5	639	28.7	838	37.6	48	2.2	2	0.1	2230	100.0
Howard	553	35.9	479	31.1	453	29.4	47	3.0	9	0.6	1541	100.0
Area 2 Total	5504	45.6	2845	23.6	3472	28.8	209	1.7	30	0.2	12060	100.0
Allegany	222	20.9	491	46.2	310	29.2	38	3.6	1	0.1	1062	100.0
Frederick	766	39.3	892	45.8	214	11.0	72	3.7	3	0.2	1947	100.0
Garrett	52	18.6	87	31.2	112	40.1	28	10.0	0	0.0	279	100.0
Montgomery	1871	46.3	1014	25.1	1122	27.7	24	0.6	14	0.3	4045	100.0
Washington	513	33.7	629	41.3	352	23.1	23	1.5	6	0.4	1523	100.0
Area 3 Total	3424	38.7	3113	35.2	2110	23.8	185	2.1	24	0.3	8856	100.0
Caroline	140	23.3	209	34.7	214	35.5	36	6.0	3	0.5	602	100.0
Cecil	491	39.8	535	43.4	133	10.8	55	4.5	20	1.6	1234	100.0
Dorchester	155	22.9	144	21.3	298	44.1	79	11.7	0	0.0	676	100.0
Kent	111	29.8	51	13.7	182	48.9	28	7.5	0	0.0	372	100.0
Queen Anne's	97	19.4	132	26.4	238	47.6	28	5.6	5	1.0	500	100.0
Somerset	74	23.2	168	52.7	76	23.8	1	0.3	0	0.0	319	100.0
Talbot	134	27.1	187	37.8	143	28.9	22	4.4	9	1.8	495	100.0
Wicomico	391	21.5	484	26.7	873	48.1	51	2.8	17	0.9	1816	100.0
Worcester	166	11.9	805	57.7	359	25.7	50	3.6	15	1.1	1395	100.0
Area 4 Total	1759	23.7	2715	36.6	2516	34.0	350	4.7	69	0.9	7409	100.0
Anne Arundel	1771	34.0	1575	30.2	1835	35.2	28	0.5	2	0.0	5211	100.0
Calvert	329	34.7	408	43.0	196	20.7	8	0.8	7	0.7	948	100.0
Charles	490	29.1	887	52.8	292	17.4	12	0.7	0	0.0	1681	100.0
Prince George's	1501	36.1	1197	28.8	1421	34.1	33	0.8	11	0.3	4163	100.0
St. Mary's	267	30.2	349	39.5	264	29.9	3	0.3	0	0.0	883	100.0
Area 5 Total	4358	33.8	4416	34.3	4008	31.1	84	0.7	20	0.2	12886	100.0
Out of State	37	97.4	0	0.0	0	0.0	1	2.6	0	0.0	38	100.0
Out of State Total	37	97.4	0	0.0	0	0.0	1	2.6	0	0.0	38	100.0
State Total	22262	41.6	14964	28.0	14815	27.7	1153	2.2	308	0.6	53502	100.0

Table 3
Rank Order of Formal Cases by County of Jurisdiction
FY 2003

Area	Formal Petition	Percent Formal Cases
Baltimore City	7180	58.6
Baltimore County	3769	54.3
Montgomery	1871	46.3
Cecil	491	39.8
Frederick	766	39.3
Prince George's	1501	36.1
Howard	553	35.9
Carroll	479	35.5
Calvert	329	34.7
Anne Arundel	1771	34.0
Washington	513	33.7
Harford	703	31.5
St. Mary's	267	30.2
Kent	111	29.8
Charles	490	29.1
Talbot	134	27.1
Caroline	140	23.3
Somerset	74	23.2
Dorchester	155	22.9
Wicomico	391	21.5
Allegany	222	20.9
Queen Anne's	97	19.4
Garrett	52	18.6
Worcester	166	11.9
Out of State	37	97.4

Table 4
Number and Percent of Total Intake Cases by Race
FY 2003

Manner of Handling Cases	African American	Percent African American	Caucasian	Percent Caucasian	Other	Percent Other	Total	Percent Total
Formal Petitions	13579	48.5	7817	32.9	866	50.8	22262	41.6
90 Days Pre Court Supervision	5991	21.4	8569	36.0	404	23.7	14964	28.0
Resolved at Intake	8259	29.5	7286	30.6	423	24.8	15968	29.8
Decision Not Recorded	192	0.7	103	0.4	13	0.8	308	0.6
Total	28021	100.0	23775	100.0	1706	100.0	53502	100.0

**Table 5
Intake Cases by Race and by County of Jurisdiction
FY 2003**

Area	African American	Percent African American	Caucasian	Percent Caucasian	Other	Percent Other	Jurisdiction Total
Baltimore City	11295	40.3	833	3.5	125	7.3	12253
Area 1 Total	11295	40.3	833	3.5	125	7.3	12253
Baltimore	3449	12.3	3414	14.4	75	4.4	6938
Carroll	87	0.3	1252	5.3	12	0.7	1351
Harford	627	2.2	1568	6.6	35	2.1	2230
Howard	661	2.4	790	3.3	90	5.3	1541
Area 2 Total	4824	17.2	7024	29.5	212	12.4	12060
Allegany	114	0.4	943	4.0	5	0.3	1062
Frederick	402	1.4	1463	6.2	82	4.8	1947
Garrett	22	0.1	254	1.1	3	0.2	279
Montgomery	1604	5.7	1665	7.0	776	45.5	4045
Washington	295	1.1	1122	4.7	106	6.2	1523
Area 3 Total	2437	8.7	5447	22.9	972	57.0	8856
Caroline	190	0.7	399	1.7	13	0.8	602
Cecil	74	0.3	1140	4.8	20	1.2	1234
Dorchester	410	1.5	259	1.1	7	0.4	676
Kent	173	0.6	192	0.8	7	0.4	372
Queen Anne's	109	0.4	386	1.6	5	0.3	500
Somerset	185	0.7	129	0.5	5	0.3	319
Talbot	198	0.7	284	1.2	13	0.8	495
Wicomico	1063	3.8	705	3.0	48	2.8	1816
Worcester	200	0.7	1169	4.9	26	1.5	1395
Area 4 Total	2602	9.3	4663	19.6	144	8.4	7409
Anne Arundel	1920	6.9	3215	13.5	76	4.5	5211
Calvert	199	0.7	733	3.1	16	0.9	948
Charles	776	2.8	887	3.7	18	1.1	1681
Prince George's	3621	12.9	408	1.7	134	7.9	4163
St. Mary's	327	1.2	551	2.3	5	0.3	883
Area 5 Total	6843	24.4	5794	24.4	249	14.6	12886
Out of State	20	0.1	14	0.1	4	0.2	38
Out of State Total	20	0.1	14	0.1	4	0.2	38
State Total	28021	100.0	23775	100.0	1706	100.0	53502

Table 6
Manner of Handling Cases by Race and County of Jurisdiction
FY 2003

Area	African American					Caucasian				
	Formal	Informal	Resolved At Intake	Decision Not Recorded	AA Total	Formal	Informal	Resolved At Intake	Decision Not Recorded	Caucasian Total
Baltimore City	6672	1719	2757	147	11295	428	141	250	14	833
Area 1 Total	6672	1719	2757	147	11295	428	141	250	14	833
Baltimore	1930	594	917	8	3449	1791	751	866	6	3414
Carroll	44	21	21	1	87	428	353	468	3	1252
Harford	265	131	231	0	627	429	499	640	0	1568
Howard	276	164	219	2	661	232	294	259	5	790
Area 2 Total	2515	910	1388	11	4824	2880	1897	2233	14	7024
Allegany	27	44	43	0	114	195	444	303	1	943
Frederick	196	138	68	0	402	522	731	208	2	1463
Garrett	8	4	10	0	22	43	83	128	0	254
Montgomery	764	331	505	4	1604	684	506	465	10	1665
Washington	148	78	68	1	295	306	523	288	5	1122
Area 3 Total	1143	595	694	5	2437	1750	2287	1392	18	5447
Caroline	49	56	84	1	190	85	148	164	2	399
Cecil	36	22	15	1	74	444	505	172	19	1140
Dorchester	120	83	207	0	410	35	57	167	0	259
Kent	55	25	93	0	173	55	25	112	0	192
Queen Anne`s	26	23	59	1	109	70	109	203	4	386
Somerset	44	95	46	0	185	28	70	31	0	129
Talbot	58	72	64	4	198	71	112	96	5	284
Wicomico	242	199	612	10	1063	131	277	290	7	705
Worcester	54	76	66	4	200	102	720	337	10	1169
Area 4 Total	684	651	1246	21	2602	1021	2023	1572	47	4663
Anne Arundel	765	492	663	0	1920	979	1063	1171	2	3215
Calvert	88	69	41	1	199	234	334	159	6	733
Charles	220	468	88	0	776	264	411	212	0	887
Prince George`s	1354	966	1294	7	3621	99	186	121	2	408
St. Mary`s	118	121	88	0	327	148	227	176	0	551
Area 5 Total	2545	2116	2174	8	6843	1724	2221	1839	10	5794
Out of State	20	0	0	0	20	14	0	0	0	14
Out of State Total	20	0	0	0	20	14	0	0	0	14
State Total	13579	5991	8259	192	28021	7817	8569	7286	103	23775

Table 6
Manner of Handling Cases by Race and County of Jurisdiction
FY 2003

Area	Other					Jurisdiction Total
	Formal	Informal	Resolved At Intake	Decision Not Recorded	Other Total	
Baltimore City	80	15	26	4	125	12253
Area 1 Total	80	15	26	4	125	12253
Baltimore	48	7	19	1	75	6938
Carroll	7	1	4	0	12	1351
Harford	9	9	15	2	35	2230
Howard	45	21	22	2	90	1541
Area 2 Total	109	38	60	5	212	12060
Allegany	0	3	2	0	5	1062
Frederick	48	23	10	1	82	1947
Garrett	1	0	2	0	3	279
Montgomery	423	177	176	0	776	4045
Washington	59	28	19	0	106	1523
Area 3 Total	531	231	209	1	972	8856
Caroline	6	5	2	0	13	602
Cecil	11	8	1	0	20	1234
Dorchester	0	4	3	0	7	676
Kent	1	1	5	0	7	372
Queen Anne`s	1	0	4	0	5	500
Somerset	2	3	0	0	5	319
Talbot	5	3	5	0	13	495
Wicomico	18	8	22	0	48	1816
Worcester	10	9	6	1	26	1395
Area 4 Total	54	41	48	1	144	7409
Anne Arundel	27	20	29	0	76	5211
Calvert	7	5	4	0	16	948
Charles	6	8	4	0	18	1681
Prince George`s	48	45	39	2	134	4163
St. Mary`s	1	1	3	0	5	883
Area 5 Total	89	79	79	2	249	12886
Out of State	3	0	1	0	4	38
Out of State Total	3	0	1	0	4	38
State Total	866	404	423	13	1706	53502

Manner of Handling Cases	Male	Percent Male	Female	Percent Female	Total
Formal Petitions	18404	45.8%	3858	28.9%	22262
90 Days Pre Court Supervision	10610	26.4%	4354	32.6%	14964
Resolved at Intake	10924	27.2%	5044	37.8%	15968
Decision Not Recorded	213	0.5%	95	0.7%	308
State Total	40151	100.0%	13351	100.0%	53502

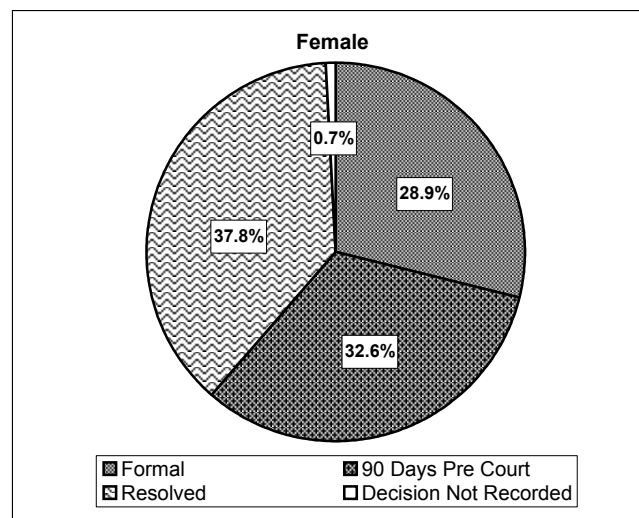
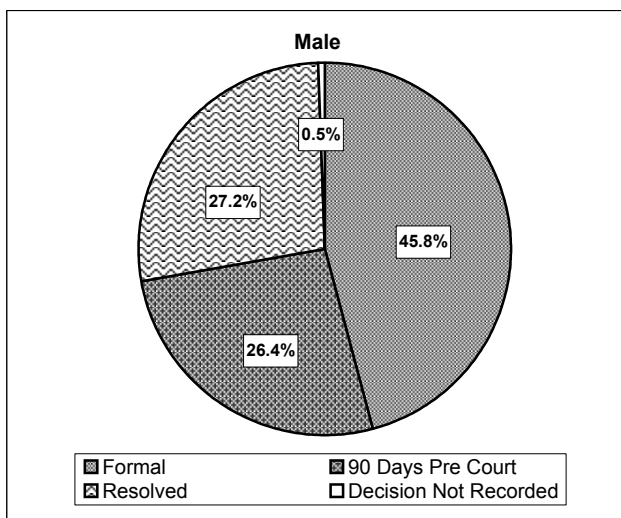


Table 8
Manner of Handling Intake Cases by Gender and County of Jurisdiction
FY 2003

Area	Male						Female						Jurisdiction Total
	Formal	Informal	Resolved At Intake	Decision Not Recorded	Total	Percent Total	Formal	Informal	Resolved At Intake	Decision Not Recorded	Total	Percent Total	
Baltimore City	6133	1373	2232	122	9860	80.5	1047	502	801	43	2393	19.5	12253
Area 1 Total	6133	1373	2232	122	9860	80.5	1047	502	801	43	2393	19.5	12253
Baltimore	2886	924	1249	8	5067	73.0	883	428	553	7	1871	27.0	6938
Carroll	347	251	335	1	934	69.1	132	124	158	3	417	30.9	1351
Harford	567	456	578	0	1601	71.8	136	183	308	2	629	28.2	2230
Howard	420	333	351	7	1111	72.1	133	146	149	2	430	27.9	1541
Area 2 Total	4220	1964	2513	16	8713	72.2	1284	881	1168	14	3347	27.8	12060
Allegany	153	297	199	1	650	61.2	69	194	149	0	412	38.8	1062
Frederick	612	584	185	1	1382	71.0	154	308	101	2	565	29.0	1947
Garrett	45	65	99	0	209	74.9	7	22	41	0	70	25.1	279
Montgomery	1617	802	827	12	3258	80.5	254	212	319	2	787	19.5	4045
Washington	455	428	231	2	1116	73.3	58	201	144	4	407	26.7	1523
Area 3 Total	2882	2176	1541	16	6615	74.7	542	937	754	8	2241	25.3	8856
Caroline	115	152	170	2	439	72.9	25	57	80	1	163	27.1	602
Cecil	377	364	127	12	880	71.3	114	171	61	8	354	28.7	1234
Dorchester	142	104	231	0	477	70.6	13	40	146	0	199	29.4	676
Kent	75	35	163	0	273	73.4	36	16	47	0	99	26.6	372
Queen Anne's	79	98	164	1	342	68.4	18	34	102	4	158	31.6	500
Somerset	69	129	58	0	256	80.3	5	39	19	0	63	19.7	319
Talbot	103	140	113	6	362	73.1	31	47	52	3	133	26.9	495
Wicomico	314	322	587	12	1235	68.0	77	162	337	5	581	32.0	1816
Worcester	147	555	289	11	1002	71.8	19	250	120	4	393	28.2	1395
Area 4 Total	1421	1899	1902	44	5266	71.1	338	816	964	25	2143	28.9	7409
Anne Arundel	1493	1196	1243	2	3934	75.5	278	379	620	0	1277	24.5	5211
Calvert	249	294	101	4	648	68.4	80	114	103	3	300	31.6	948
Charles	428	587	209	0	1224	72.8	62	300	95	0	457	27.2	1681
Prince George's	1328	889	1027	9	3253	78.1	173	308	427	2	910	21.9	4163
St. Mary's	216	232	156	0	604	68.4	51	117	111	0	279	31.6	883
Area 5 Total	3714	3198	2736	15	9663	75.0	644	1218	1356	5	3223	25.0	12886
Out of State	34	0	0	0	34	89.5	3	0	1	0	4	10.5	38
Out of State Total	34	0	0	0	34	89.5	3	0	1	0	4	10.5	38
Total	18404	10610	10924	213	40151	75.0	3858	4354	5044	95	13351	25.0	53502

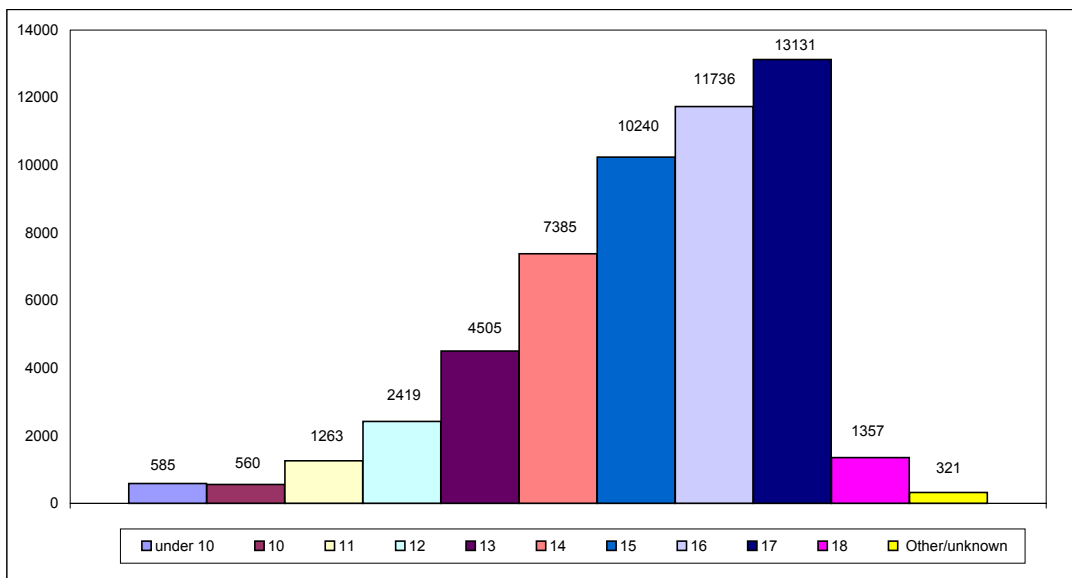
**Table 9
Intake Cases by Race, Gender, and County of Jurisdiction
FY 2003**

Area	African American					Caucasian					Other					Jurisdiction Total
	Male	Percent Total	Female	Percent Total	A.A. Total	Male	Percent Total	Female	Percent Total	Caucasian Total	Male	Percent Total	Female	Percent Total	Other Total	
Baltimore City	9154	42.2	2141	33.8	11295	608	3.5	225	3.4	833	98	7.3	27	7.3	125	12253
Area 1 Total	9154	42.2	2141	33.8	11295	608	3.5	225	3.4	833	98	7.3	27	7.3	125	12253
Baltimore	2490	11.5	959	15.1	3449	2516	14.7	898	13.5	3414	61	4.6	14	3.8	75	6938
Carroll	66	0.3	21	0.3	87	859	5.0	393	5.9	1252	9	0.7	3	0.8	12	1351
Harford	460	2.1	167	2.6	627	1118	6.5	450	6.8	1568	23	1.7	12	3.2	35	2230
Howard	476	2.2	185	2.9	661	572	3.3	218	3.3	790	63	4.7	27	7.3	90	1541
Area 2 Total	3492	16.1	1332	21.0	4824	5065	29.6	1959	29.5	7024	156	11.7	56	15.1	212	12060
Allegany	82	0.4	32	0.5	114	564	3.3	379	5.7	943	4	0.3	1	0.3	5	1062
Frederick	299	1.4	103	1.6	402	1030	6.0	433	6.5	1463	53	4.0	29	7.8	82	1947
Garrett	19	0.1	3	0.0	22	187	1.1	67	1.0	254	3	0.2	0	0.0	3	279
Montgomery	1339	6.2	265	4.2	1604	1297	7.6	368	5.5	1665	622	46.6	154	41.4	776	4045
Washington	218	1.0	77	1.2	295	806	4.7	316	4.8	1122	92	6.9	14	3.8	106	1523
Area 3 Total	1957	9.0	480	7.6	2437	3884	22.7	1563	23.5	5447	774	58.0	198	53.2	972	8856
Caroline	132	0.6	58	0.9	190	296	1.7	103	1.6	399	11	0.8	2	0.5	13	602
Cecil	57	0.3	17	0.3	74	805	4.7	335	5.0	1140	18	1.3	2	0.5	20	1234
Dorchester	294	1.4	116	1.8	410	178	1.0	81	1.2	259	5	0.4	2	0.5	7	676
Kent	124	0.6	49	0.8	173	143	0.8	49	0.7	192	6	0.4	1	0.3	7	372
Queen Anne's	73	0.3	36	0.6	109	265	1.5	121	1.8	386	4	0.3	1	0.3	5	500
Somerset	148	0.7	37	0.6	185	104	0.6	25	0.4	129	4	0.3	1	0.3	5	319
Talbot	148	0.7	50	0.8	198	203	1.2	81	1.2	284	11	0.8	2	0.5	13	495
Wicomico	707	3.3	356	5.6	1063	489	2.9	216	3.3	705	39	2.9	9	2.4	48	1816
Worcester	156	0.7	44	0.7	200	827	4.8	342	5.2	1169	19	1.4	7	1.9	26	1395
Area 4 Total	1839	8.5	763	12.0	2602	3310	19.3	1353	20.4	4663	117	8.8	27	7.3	144	7409
Anne Arundel	1448	6.7	472	7.4	1920	2430	14.2	785	11.8	3215	56	4.2	20	5.4	76	5211
Calvert	153	0.7	46	0.7	199	484	2.8	249	3.8	733	11	0.8	5	1.3	16	948
Charles	564	2.6	212	3.3	776	650	3.8	237	3.6	887	10	0.7	8	2.2	18	1681
Prince George's	2836	13.1	785	12.4	3621	311	1.8	97	1.5	408	106	7.9	28	7.5	134	4163
St. Mary's	216	1.0	111	1.8	327	384	2.2	167	2.5	551	4	0.3	1	0.3	5	883
Area 5 Total	5217	24.1	1626	25.6	6843	4259	24.9	1535	23.1	5794	187	14.0	62	16.7	249	12886
Out of State	20	0.1	0	0.0	20	12	0.1	2	0.0	14	2	0.1	2	0.5	4	38
State Total	21679	100.0	6342	100.0	28021	17138	100.0	6637	100.0	23775	1334	100.0	372	100.0	1706	53502

Table 10
Number and Percent of Total Intake Cases by Age
FY 2003

Age of Youth	2001 Cases	Percent Cases	2002 Cases	Percent Cases	2003 Cases	Percent Cases	% Change '02 to '03
Under 10	729	1.4	614	1.1	585	1.1	-4.7
Ten	697	1.3	653	1.2	560	1.0	-14.2
Eleven	1306	2.5	1240	2.3	1263	2.4	1.9
Twelve	2562	4.9	2425	4.5	2419	4.5	-0.2
Thirteen	4318	8.2	4627	8.5	4505	8.4	-2.6
Fourteen	7066	13.5	7140	13.2	7385	13.8	3.4
Fifteen	9969	19.0	10122	18.7	10240	19.1	1.2
Sixteen	11090	21.1	11919	22.0	11736	21.9	-1.5
Seventeen	12587	24.0	13066	24.1	13131	24.5	0.5
Eighteen	1638	3.1	1450	2.7	1357	2.5	-6.4
Other/Unknown	479	0.9	986	1.8	321	0.6	-67.4
State Total	52441	100.0	54242	100.0	53502	100.0	-1.4

Total Intake Cases by Age
FY 2003



**Table 11
Intake Cases by Age and County of Jurisdiction
FY 2003**

Area	Under 10	10	11	12	13	14	15	16	17	18	Over 18	Age Unknown	Jurisdiction Total
Baltimore City	143	147	300	632	1124	1770	2442	2676	2749	162	9	99	12253
Area 1 Total	143	147	300	632	1124	1770	2442	2676	2749	162	9	99	12253
Baltimore	66	85	192	327	627	1098	1328	1536	1520	133	6	20	6938
Carroll	7	10	31	52	95	171	276	301	352	45	1	10	1351
Harford	31	24	50	89	172	274	414	517	567	77	8	7	2230
Howard	9	10	13	59	95	196	266	355	468	62	0	8	1541
Area 2 Total	113	129	286	527	989	1739	2284	2709	2907	317	15	45	12060
Allegany	11	4	22	45	104	162	200	224	274	14	0	2	1062
Frederick	21	23	40	101	164	240	382	416	498	59	0	3	1947
Garrett	3	3	1	15	14	31	62	63	80	6	0	1	279
Montgomery	22	15	53	118	227	517	819	919	1080	250	7	18	4045
Washington	17	8	56	74	183	240	300	289	316	26	1	13	1523
Area 3 Total	74	53	172	353	692	1190	1763	1911	2248	355	8	37	8856
Caroline	15	10	23	24	44	72	104	141	159	10	0		602
Cecil	27	15	35	55	108	174	237	255	305	13	1	9	1234
Dorchester	11	10	18	38	69	112	131	123	155	7	1	1	676
Kent	9	2	7	16	22	62	59	87	100	8	0		372
Queen Anne's	4	9	12	29	42	54	86	120	127	12	0	5	500
Somerset	17	11	14	25	28	40	65	49	68	0	0	2	319
Talbot	8	6	13	29	47	61	63	108	147	13	0		495
Wicomico	25	31	67	139	222	312	316	298	350	43	1	12	1816
Worcester	3	5	9	25	47	70	149	283	734	63	0	7	1395
Area 4 Total	119	99	198	380	629	957	1210	1464	2145	169	3	36	7409
Anne Arundel	68	63	141	222	462	702	1022	1212	1245	59	5	10	5211
Calvert	7	9	15	44	85	130	152	240	242	19	1	4	948
Charles	18	17	49	75	100	201	340	389	461	28	2	1	1681
Prince George's	32	30	77	141	333	568	856	936	916	179	9	86	4163
St. Mary's	11	13	25	45	91	121	164	189	208	13	0	3	883
Area 5 Total	136	132	307	527	1071	1722	2534	2966	3072	298	17	104	12886
Out of State	0	0	0	0	0	7	7	10	10	4	0	0	38
Out of State Total	0	0	0	0	0	7	7	10	10	4	0	0	38
State Total	585	560	1263	2419	4505	7385	10240	11736	13131	1305	52	321	53502

Table 12
Intake Cases by Age and County of Jurisdiction for African American Youth
FY 2003

Area	Under 10	10	11	12	13	14	15	16	17	18	Over 18	Age Unknown	Jurisdiction Total
Baltimore City	132	123	267	587	1029	1627	2288	2468	2542	146	6	80	11295
Area 1 Total	132	123	267	587	1029	1627	2288	2468	2542	146	6	80	11295
Baltimore	35	51	125	198	373	605	669	679	649	53	3	9	3449
Carroll	0	3	1	6	3	9	14	25	22	2	0	2	87
Harford	17	11	27	43	76	72	109	120	129	18	3	2	627
Howard	4	6	8	28	57	112	126	137	156	22	0	5	661
Area 2 Total	56	71	161	275	509	798	918	961	956	95	6	18	4824
Allegany	3	0	1	0	13	28	21	22	25	1	0	0	114
Frederick	11	17	14	29	41	54	60	61	103	11	0	1	402
Garrett	0	0	0	1	2	1	5	4	9	0	0	0	22
Montgomery	13	13	34	71	128	217	367	350	352	51	1	7	1604
Washington	3	2	21	17	72	45	46	41	44	3	0	1	295
Area 3 Total	30	32	70	118	256	345	499	478	533	66	1	9	2437
Caroline	9	2	13	5	11	20	42	43	44	1	0	0	190
Cecil	5	1	6	7	8	11	14	7	13	1	0	1	74
Dorchester	8	5	15	32	45	67	73	71	88	4	1	1	410
Kent	6	1	2	11	18	43	20	42	27	3	0	0	173
Queen Anne's	1	2	6	6	7	13	19	24	28	2	0	1	109
Somerset	13	9	8	17	11	16	39	35	37	0	0	0	185
Talbot	5	6	7	12	21	42	22	26	54	3	0	0	198
Wicomico	18	23	50	96	170	214	153	139	173	17	1	9	1063
Worcester	3	4	6	15	20	24	27	32	62	6	0	1	200
Area 4 Total	68	53	113	201	311	450	409	419	526	37	2	13	2602
Anne Arundel	39	27	51	100	201	296	359	408	411	25	0	3	1920
Calvert	1	4	2	11	23	25	23	63	37	7	1	2	199
Charles	14	14	35	50	60	84	142	167	197	12	0	1	776
Prince George's	32	27	73	130	305	506	745	802	763	156	6	76	3621
St. Mary's	6	6	13	29	46	56	65	56	42	5	0	3	327
Area 5 Total	92	78	174	320	635	967	1334	1496	1450	205	7	85	6843
Out of State	0	0	0	0	0	5	3	6	3	3	0	0	20
Out of State Total	0	0	0	0	0	5	3	6	3	3	0	0	20
State Total	378	357	785	1501	2740	4192	5451	5828	6010	552	22	205	28021

Table 13
Intake Cases by Age and County of Jurisdiction for Caucasian Youth
FY 2003

Area	Under 10	10	11	12	13	14	15	16	17	18	Over 18	Age Unknown	Jurisdiction Total
Baltimore City	11	24	30	34	86	123	135	179	182	16	3	10	833
Area 1 Total	11	24	30	34	86	123	135	179	182	16	3	10	833
Baltimore	31	34	67	124	233	483	648	847	859	78	3	7	3414
Carroll	7	7	30	46	92	160	260	274	325	42	1	8	1252
Harford	13	12	23	46	93	201	299	384	430	59	5	3	1568
Howard	4	4	4	28	38	77	125	189	282	37	0	2	790
Area 2 Total	55	57	124	244	456	921	1332	1694	1896	216	9	20	7024
Allegany	8	4	21	45	90	134	179	201	246	13	0	2	943
Frederick	10	6	26	66	116	176	302	338	375	46	0	2	1463
Garrett	2	3	1	14	12	30	57	57	71	6	0	1	254
Montgomery	5	1	12	28	64	170	287	397	550	137	6	8	1665
Washington	13	5	32	45	106	145	240	236	266	22	1	11	1122
Area 3 Total	38	19	92	198	388	655	1065	1229	1508	224	7	24	5447
Caroline	6	8	10	18	32	51	58	97	110	9	0	0	399
Cecil	22	14	29	48	100	160	217	248	282	11	1	8	1140
Dorchester	2	4	3	6	24	45	57	51	64	3	0	0	259
Kent	3	1	5	5	4	16	39	44	70	5	0	0	192
Queen Anne's	3	7	6	22	35	41	67	96	98	8	0	3	386
Somerset	3	2	6	7	16	24	26	14	29	0	0	2	129
Talbot	1	0	6	17	24	19	41	81	85	10	0	0	284
Wicomico	7	8	17	41	47	89	153	151	165	24	0	3	705
Worcester	0	1	3	8	26	44	119	243	663	57	0	5	1169
Area 4 Total	47	45	85	172	308	489	777	1025	1566	127	1	21	4663
Anne Arundel	27	36	87	119	260	401	648	788	804	34	5	6	3215
Calvert	6	5	13	33	62	103	125	174	199	12	0	1	733
Charles	4	3	14	24	39	116	194	221	254	16	2	0	887
Prince George's	0	3	2	6	18	45	85	99	123	19	3	5	408
St. Mary's	5	7	12	16	45	65	97	133	163	8	0	0	551
Area 5 Total	42	54	128	198	424	730	1149	1415	1543	89	10	12	5794
Out of State	0	0	0	0	0	1	4	3	5	1	0	0	14
Out of State Total	0	0	0	0	0	1	4	3	5	1	0	0	14
State Total	193	199	459	846	1662	2919	4462	5545	6700	673	30	87	23775

Table 14
Intake Cases by Age and County of Jurisdiction for Other Race Group Youth
FY 2003

Area	Under 10	10	11	12	13	14	15	16	17	18	Age Unknown	Jurisdiction Total
Baltimore City	0	0	3	11	9	20	19	29	25	0	9	125
Area 1 Total	0	0	3	11	9	20	19	29	25	0	9	125
Baltimore	0	0	0	5	21	10	11	10	12	2	4	75
Carroll	0	0	0	0	0	2	2	2	5	1	0	12
Harford	1	1	0	0	3	1	6	13	8	0	2	35
Howard	1	0	1	3	0	7	15	29	30	3	1	90
Area 2 Total	2	1	1	8	24	20	34	54	55	6	7	212
Allegany	0	0	0	0	1	0	0	1	3	0	0	5
Frederick	0	0	0	6	7	10	20	17	20	2	0	82
Garrett	1	0	0	0	0	0	0	2	0	0	0	3
Montgomery	4	1	7	19	35	130	165	172	178	62	3	776
Washington	1	1	3	12	5	50	14	12	6	1	1	106
Area 3 Total	6	2	10	37	48	190	199	204	207	65	4	972
Caroline	0	0	0	1	1	1	4	1	5	0	0	13
Cecil	0	0	0	0	0	3	6	0	10	1	0	20
Dorchester	1	1	0	0	0	0	1	1	3	0	0	7
Kent	0	0	0	0	0	3	0	1	3	0	0	7
Queen Anne's	0	0	0	1	0	0	0	0	1	2	1	5
Somerset	1	0	0	1	1	0	0	0	2	0	0	5
Talbot	2	0	0	0	2	0	0	1	8	0	0	13
Wicomico	0	0	0	2	5	9	10	8	12	2	0	48
Worcester	0	0	0	2	1	2	3	8	9	0	1	26
Area 4 Total	4	1	0	7	10	18	24	20	53	5	2	144
Anne Arundel	2	0	3	3	1	5	15	16	30	0	1	76
Calvert	0	0	0	0	0	2	4	3	6	0	1	16
Charles	0	0	0	1	1	1	4	1	10	0	0	18
Prince George's	0	0	2	5	10	17	26	35	30	4	5	134
St. Mary's	0	0	0	0	0	0	2	0	3	0	0	5
Area 5 Total	2	0	5	9	12	25	51	55	79	4	7	249
Out of State	0	0	0	0	0	1	0	1	2	0	0	4
Out of State Total	0	0	0	0	0	1	0	1	2	0	0	4
State Total	14	4	19	72	103	274	327	363	421	80	29	1706

Table 15
Intake Cases by Age and County of Jurisdiction for Males
FY 2003

Area	< 10	10	11	12	13	14	15	16	17	18	> 18	Age Unknown	Male Total
Baltimore City	122	125	228	455	810	1371	2019	2237	2325	131	5	32	9860
Area 1 Total	122	125	228	455	810	1371	2019	2237	2325	131	5	32	9860
Baltimore	57	78	146	251	448	741	899	1163	1172	99	6	7	5067
Carroll	5	8	27	42	58	101	178	210	267	34	1	3	934
Harford	26	15	38	58	130	179	285	367	437	57	7	2	1601
Howard	9	7	12	42	68	140	194	255	331	49	0	4	1111
Area 2 Total	97	108	223	393	704	1161	1556	1995	2207	239	14	16	8713
Allegany	11	2	18	33	49	83	115	129	197	12	0	1	650
Frederick	21	18	29	64	125	170	267	274	367	46	0	1	1382
Garrett	1	2	0	12	12	20	42	52	61	6	0	1	209
Montgomery	22	12	44	93	179	392	638	753	888	217	5	15	3258
Washington	15	7	46	46	132	167	230	207	244	18	1	3	1116
Area 3 Total	70	41	137	248	497	832	1292	1415	1757	299	6	21	6615
Caroline	13	9	20	17	30	53	60	101	128	8	0	0	439
Cecil	21	12	29	39	70	122	165	186	224	9	1	2	880
Dorchester	7	10	17	32	51	81	80	74	117	7	1	0	477
Kent	8	1	6	10	13	43	46	69	71	6	0	0	273
Queen Anne's	3	9	11	21	26	33	55	80	95	9	0	0	342
Somerset	17	10	11	19	21	33	54	35	56	0	0	0	256
Talbot	7	6	8	24	37	50	43	71	105	11	0	0	362
Wicomico	22	26	56	89	132	208	221	204	238	29	1	9	1235
Worcester	3	4	7	17	33	54	89	205	536	51	0	3	1002
Area 4 Total	101	87	165	268	413	677	813	1025	1570	130	3	14	5266
Anne Arundel	64	55	126	172	341	484	762	911	959	50	5	5	3934
Calvert	6	8	13	31	64	86	92	152	177	17	1	1	648
Charles	15	11	39	62	81	146	231	283	335	19	2	0	1224
Prince George's	27	24	55	102	254	454	668	742	743	138	7	39	3253
St. Mary's	8	8	19	27	60	74	109	131	156	12	0	0	604
Area 5 Total	120	106	252	394	800	1244	1862	2219	2370	236	15	45	9663
Out of State	0	0	0	0	0	6	6	9	9	4	0	0	34
Out of State Total	0	0	0	0	0	6	6	9	9	4	0	0	34
State Total	510	467	1005	1758	3224	5291	7548	8900	10238	1039	43	128	40151

Table 16
Intake Cases by Age and County of Jurisdiction for Females
FY 2003

Area	< 10	10	11	12	13	14	15	16	17	18	> 18	Age Unknown	Female Total
Baltimore City	21	22	72	177	314	399	423	439	424	31	4	67	2393
Area 1 Total	21	22	72	177	314	399	423	439	424	31	4	67	2393
Baltimore	9	7	46	76	179	357	429	373	348	34	0	13	1871
Carroll	2	2	4	10	37	70	98	91	85	11	0	7	417
Harford	5	9	12	31	42	95	129	150	130	20	1	5	629
Howard	0	3	1	17	27	56	72	100	137	13	0	4	430
Area 2 Total	16	21	63	134	285	578	728	714	700	78	1	29	3347
Allegany	0	2	4	12	55	79	85	95	77	2	0	1	412
Frederick	0	5	11	37	39	70	115	142	131	13	0	2	565
Garrett	2	1	1	3	2	11	20	11	19	0	0	0	70
Montgomery	0	3	9	25	48	125	181	166	192	33	2	3	787
Washington	2	1	10	28	51	73	70	82	72	8	0	10	407
Area 3 Total	4	12	35	105	195	358	471	496	491	56	2	16	2241
Caroline	2	1	3	7	14	19	44	40	31	2	0	0	163
Cecil	6	3	6	16	38	52	72	69	81	4	0	7	354
Dorchester	4	0	1	6	18	31	51	49	38	0	0	1	199
Kent	1	1	1	6	9	19	13	18	29	2	0	0	99
Queen Anne's	1	0	1	8	16	21	31	40	32	3	0	5	158
Somerset	0	1	3	6	7	7	11	14	12	0	0	2	63
Talbot	1	0	5	5	10	11	20	37	42	2	0	0	133
Wicomico	3	5	11	50	90	104	95	94	112	14	0	3	581
Worcester	0	1	2	8	14	16	60	78	198	12	0	4	393
Area 4 Total	18	12	33	112	216	280	397	439	575	39	0	22	2143
Anne Arundel	4	8	15	50	121	218	260	301	286	9	0	5	1277
Calvert	1	1	2	13	21	44	60	88	65	2	0	3	300
Charles	3	6	10	13	19	55	109	106	126	9	0	1	457
Prince George's	5	6	22	39	79	114	188	194	173	41	2	47	910
St. Mary's	3	5	6	18	31	47	55	58	52	1	0	3	279
Area 5 Total	16	26	55	133	271	478	672	747	702	62	2	59	3223
Out of State	0	0	0	0	0	1	1	1	1	0	0	0	4
Out of State Total	0	0	0	0	0	1	1	1	1	0	0	0	4
State Total	75	93	258	661	1281	2094	2692	2836	2893	266	9	193	13351

Table 17
Number & Percent of Total Intake Cases by Referral Source
FY 2003

Referral Source	FY 2003	Percent
Police	50146	93.7
Maryland State Agencies	639	1.2
Citizen	1302	2.4
Parent / Relative	505	0.9
Court	76	0.1
DJS Violation of Probation	730	1.4
Other	104	0.2
State Total	53502	100.0

Table 18
Intake Cases by Referral Source and County of Jurisdiction
FY 2003

Area	Police	Maryland State Agencies	Citizen	Parent/ Relative	Court	DJS * Violation of Probation	Other	Jurisdiction Total
Baltimore City	11001	136	693	195	14	196	18	12253
Area 1 Total	11001	136	693	195	14	196	18	12253
Baltimore	6786	1	19	6	3	120	3	6938
Carroll	1170	67	22	30	1	59	2	1351
Harford	2133	0	0	0	4	93	0	2230
Howard	1525	0	6	0	0	10	0	1541
Area 2 Total	11614	68	47	36	8	282	5	12060
Allegany	1002	0	11	41	0	4	4	1062
Frederick	1743	38	27	20	0	113	6	1947
Garrett	230	21	8	14	0	1	5	279
Montgomery	3958	0	0	13	33	40	1	4045
Washington	1269	0	99	117	0	24	14	1523
Area 3 Total	8202	59	145	205	33	182	30	8856
Caroline	588	3	3	2	1	5	0	602
Cecil	1207	1	11	3	0	10	2	1234
Dorchester	657	8	10	1	0	0	0	676
Kent	365	3	0	0	1	3	0	372
Queen Anne`s	484	3	0	4	1	8	0	500
Somerset	316	0	0	0	0	3	0	319
Talbot	478	7	9	0	0	1	0	495
Wicomico	1813	0	0	0	0	3	0	1816
Worcester	1383	0	0	1	0	6	5	1395
Area 4 Total	7291	25	33	11	3	39	7	7409
Anne Arundel	5154	0	23	11	0	11	12	5211
Calvert	936	0	6	2	2	0	2	948
Charles	1668	0	0	0	0	13	0	1681
Prince George`s	3395	351	355	45	14	0	3	4163
St. Mary`s	878	0	0	0	0	5	0	883
Area 5 Total	12031	351	384	58	16	29	17	12886
Out of State	7	0	0	0	2	2	27	38
Out of State Total	7	0	0	0	2	2	27	38
State Total	50146	639	1302	505	76	730	104	53502

Note: * DJS started tracking the violation of probation cases since last year, and the data presented here may not be the exact count of violation of probation since no validity checks are made on this field yet.

Table 19
Intake Cases - Offenses by Offense Type
FY 2001 - FY 2003

Offenses	FY 2001	Percent	FY 2002	Percent	FY 2003	Percent	Percent Change '02 to '03
Person-to-Person Offenses							
aggravated assault	875	1.7	1035	1.9	1105	2.1	6.8%
child abuse	100	0.2	61	0.1	38	0.1	-37.7%
kidnapping	3	0.0	11	0.0	12	0.0	9.1%
manslaughter	6	0.0	7	0.0	13	0.0	85.7%
murder	29	0.1	47	0.1	39	0.1	-17.0%
robbery	994	1.9	940	1.8	918	1.7	-2.3%
sex felony	330	0.6	377	0.7	423	0.8	12.2%
general sex	226	0.4	237	0.4	193	0.4	-18.6%
simple assault	10016	19.1	10207	19.0	10664	20.1	4.5%
Total Person-to-Person	12579	24.0	12922	24.1	13405	25.3	3.7%
Property Offenses							
arson felony/misdemeanor	459	0.9	399	0.7	384	0.7	-3.8%
auto theft/unauthorized use	1804	3.4	2334	4.4	2769	5.2	18.6%
burglary/breaking & entering	2636	5.0	2443	4.6	2483	4.7	1.6%
carjacking	58	0.1	56	0.1	40	0.1	-28.6%
malicious destruction	3852	7.3	3794	7.1	3831	7.2	1.0%
tampering	92	0.2	50	0.1	44	0.1	-12.0%
theft/shoplifting	8294	15.8	8040	15.0	7457	14.1	-7.3%
trespassing	1094	2.1	1169	2.2	1265	2.4	8.2%
Total Property	18289	34.9	18285	34.1	18273	34.4	-0.1%
Alcohol & Drug Related Offenses							
alcohol violation	3195	6.1	2892	5.4	2640	5.0	-8.7%
glue sniffing & other inhalants	11	0.0	10	0.0	6	0.0	-40.0%
narcotics distribution	2478	4.7	3355	6.3	3051	5.8	-9.1%
narcotics possession	5078	9.7	5213	9.7	4493	8.5	-13.8%
Total Alcohol & Drug Related	10762	20.5	11470	21.4	10190	19.2	-11.2%
CINS Offenses							
runaway	671	1.3	637	1.2	596	1.1	-6.4%
truancy	444	0.8	204	0.4	203	0.4	-0.5%
ungovernable	658	1.3	553	1.0	564	1.1	2.0%
Total CINS	1773	3.4	1394	2.6	1363	2.6	-2.2%
Uncategorized Offenses							
conspiracy	128	0.2	90	0.2	92	0.2	2.2%
false report	284	0.5	213	0.4	216	0.4	1.4%
false alarm	40	0.1	39	0.1	44	0.1	12.8%
handgun violations	132	0.3	102	0.2	97	0.2	-4.9%
harassment	228	0.4	208	0.4	241	0.5	15.9%
loitering	222	0.4	284	0.5	515	1.0	81.3%
motor vehicle/traffic violations	1169	2.2	1460	2.7	1532	2.9	4.9%
pager at school	30	0.1	6	0.0	2	0.0	-66.7%
reckless endangerment	94	0.2	62	0.1	92	0.2	48.4%
telephone misuse	179	0.3	149	0.3	135	0.3	-9.4%
tobacco violations	1865	3.6	1986	3.7	1944	3.7	-2.1%
bomb threat	100	0.2	145	0.3	128	0.2	-11.7%
fireworks violations	83	0.2	72	0.1	62	0.1	-13.9%
violation of probation	170	0.3	540	1.0	643	1.2	19.1%
other felony	225	0.4	120	0.2	127	0.2	5.8%
other misdemeanor	4089	7.8	4081	7.6	3942	7.4	-3.4%
Total Uncategorized	9038	17.2	9557	17.8	9812	18.5	2.7%
*Offenses Not Linked	-	-	614	1.1	459	0.9	-25.2%
State Total	52441	100.0	54242	100.0	53502	100.0	-1.4%

* Offenses are not known due to linkage problems in ASSIST.

**Table 20
Intake Cases by Alleged Offenses & County of Jurisdiction
FY 2003**

Area	AGGRAVATED ASSAULT	CHILD ABUSE	GENERAL SEX	KIDNAPPING	MANSLAUGHTER	MURDER	ROBBERY	SEX FELONY	SIMPLE ASSAULT	ARSON FELONY / MISDEMEANOR	AUTO THEFT/ UNAUTHORIZED USE	BURGLARY/B & E	CARJACKING	MALICIOUS DESTRUCTION	TAMPERING	THEFT/SHOPLIFTING	TRESPASSING
Baltimore City	560	2	33	4	0	17	318	89	2239	58	953	449	19	508	0	487	377
Area 1 Total	560	2	33	4	0	17	318	89	2239	58	953	449	19	508	0	487	377
Baltimore	131	17	27	0	1	8	161	64	1697	63	241	377	4	592	9	1432	195
Carroll	11	2	7	0	0	0	0	19	184	6	13	50	0	97	0	186	36
Harford	13	1	4	0	0	0	18	13	456	8	49	105	0	184	4	396	45
Howard	11	1	11	0	0	0	23	10	342	20	56	94	0	86	1	253	39
Area 2 Total	166	21	49	0	1	8	202	106	2679	97	359	626	4	959	14	2267	315
Allegany	5	0	6	0	0	1	3	3	157	4	12	28	0	60	5	136	9
Frederick	17	2	3	0	0	0	9	18	321	17	28	89	0	131	0	312	26
Garrett	1	1	8	0	0	0	1	1	37	5	5	12	0	18	0	20	1
Montgomery	48	4	14	1	1	2	129	32	597	28	350	309	2	269	0	593	41
Washington	15	1	1	2	0	1	5	17	321	18	31	46	0	198	1	213	24
Area 3 Total	86	8	32	3	1	4	147	71	1433	72	426	484	2	676	6	1274	101
Caroline	5	0	2	1	1	1	2	3	166	7	17	27	0	68	1	49	8
Cecil	4	2	5	0	0	0	5	15	289	4	19	122	0	98	1	135	23
Dorchester	8	0	2	0	0	0	0	1	126	5	21	43	0	78	0	96	3
Kent	0	0	1	0	0	0	0	1	114	6	7	14	0	19	0	23	12
Queen Anne's	3	0	5	0	1	0	1	3	113	9	6	28	0	48	0	44	15
Somerset	5	0	1	0	0	0	1	2	94	7	6	7	0	39	0	34	10
Talbot	6	0	0	0	0	0	1	6	99	4	2	13	0	41	0	57	3
Wicomico	31	1	10	0	0	3	12	11	533	22	44	49	0	101	2	364	27
Worcester	6	0	8	0	0	0	4	5	86	2	21	21	0	69	1	157	9
Area 4 Total	68	3	34	1	2	4	26	47	1620	66	143	324	0	561	5	959	110
Anne Arundel	51	1	20	1	1	0	68	40	1146	44	207	241	4	495	14	1117	155
Calvert	1	1	2	0	0	0	0	13	166	9	24	64	0	82	1	84	8
Charles	32	0	8	3	1	0	18	15	349	9	47	60	0	155	0	377	33
Prince George's	135	1	9	0	6	6	135	35	830	24	585	203	11	275	4	767	159
St. Mary's	6	1	6	0	1	0	3	7	201	5	19	30	0	120	0	114	7
Area 5 Total	225	4	45	4	9	6	224	110	2692	91	882	598	15	1127	19	2459	362
Out of State	0	0	0	0	0	0	1	0	1	0	6	2	0	0	0	11	0
State Total	1105	38	193	12	13	39	918	423	10664	384	2769	2483	40	3831	44	7457	1265

Table 20
Intake Cases by Alleged Offenses & County of Jurisdiction
FY 2003

Area	ALCOHOL VIOLATION	GLUE SNIFFING & OTHER INHALANTS	NARCOTICS DISTRIBUTION	NARCOTICS POSSESSION	RUNAWAY	TRUANCY	UNGOVERNABLE	BOMB THREAT	CONSPIRACY	DEADLY WEAPON	DISTURBING THE PEACE	ESCAPE	FALSE ALARM	FALSE REPORT	FIREWORKS VIOLATION	HANDGUN VIOLATIONS	HARASSMENT	LOITERING
Baltimore City	68	0	2317	1167	6	83	140	4	25	307	813	6	4	20	4	54	30	487
Area 1 Total	68	0	2317	1167	6	83	140	4	25	307	813	6	4	20	4	54	30	487
Baltimore	181	0	107	538	13	0	72	40	0	106	189	11	13	26	8	7	42	17
Carroll	125	0	18	126	47	16	8	6	4	12	12	2	3	8	2	0	7	0
Harford	73	1	52	240	0	0	0	4	2	65	63	0	2	11	5	0	11	0
Howard	128	0	25	129	6	0	1	1	0	31	75	0	0	9	1	0	10	0
Area 2 Total	507	1	202	1033	66	16	81	51	6	214	339	13	18	54	16	7	70	17
Allegany	207	0	14	45	52	24	44	3	2	5	29	5	0	9	0	1	12	0
Frederick	70	0	32	169	77	41	17	0	13	13	42	2	2	6	7	2	4	0
Garrett	47	0	2	26	4	14	17	1	2	0	1	4	0	0	0	0	1	0
Montgomery	284	0	66	297	5	0	12	17	21	69	37	1	1	12	9	1	6	0
Washington	142	0	29	64	2	1	104	2	4	18	51	0	2	3	0	2	12	0
Area 3 Total	750	0	143	601	140	80	194	23	42	105	160	12	5	30	16	6	35	0
Caroline	28	0	11	44	51	3	0	0	1	2	26	0	0	1	1	0	7	0
Cecil	146	3	19	105	12	0	0	3	2	6	46	0	5	4	0	1	5	0
Dorchester	35	0	7	42	32	0	0	1	0	7	97	1	2	1	0	0	1	0
Kent	20	2	10	40	4	1	0	1	0	1	4	0	0	2	2	0	1	0
Queen Anne's	49	0	12	52	24	3	1	2	0	2	19	0	0	5	0	0	3	0
Somerset	8	0	10	13	12	0	0	1	0	3	16	0	0	2	1	1	1	0
Talbot	68	0	7	58	27	1	0	10	1	8	14	0	0	2	3	0	10	0
Wicomico	92	0	47	75	31	3	0	1	1	21	63	4	5	4	2	2	11	0
Worcester	395	0	22	220	22	0	1	0	5	11	71	0	0	5	1	0	1	0
Area 4 Total	841	5	145	649	215	11	2	19	10	61	356	5	12	26	10	4	40	0
Anne Arundel	148	0	96	543	0	1	12	9	2	95	169	1	2	34	8	5	28	5
Calvert	114	0	17	118	133	0	0	2	0	14	21	0	0	6	5	0	1	2
Charles	78	0	23	112	2	0	0	10	5	25	72	3	0	8	2	2	1	0
Prince George's	46	0	90	195	5	11	134	4	1	117	124	9	3	28	1	18	33	4
St. Mary's	87	0	15	70	29	0	0	6	0	7	40	0	0	10	0	1	3	0
Area 5 Total	473	0	241	1038	169	12	146	31	8	258	426	13	5	86	16	26	66	11
Out of State	1	0	3	5	0	1	1	0	1	0	0	0	0	0	0	0	0	0
State Total	2640	6	3051	4493	596	203	564	128	92	945	2094	49	44	216	62	97	241	515

Table 20
Intake Cases by Alleged Offenses & County of Jurisdiction
FY 2003

Area	OTHER FELONY	PAGER AT SCHOOL	RECKLESS ENDANGERMENT	TELEPHONE MISUSE	TOBACCO VIOLATIONS	MOTOR VEHICLE/TRAFFIC VIOLATIONS	VIOLATION OF PROBATION	OTHER MISDEAMEANOR	OFFENSE NOT LINKED*	JURISDICTION TOTAL
Baltimore City	25	1	32	2	6	144	197	160	38	12253
Area 1 Total	25	1	32	2	6	144	197	160	38	12253
Baltimore	17	0	7	32	122	128	68	97	78	6938
Carroll	5	0	5	5	123	35	36	5	130	1351
Harford	8	0	1	2	221	57	90	24	2	2230
Howard	3	0	3	9	70	76	8	5	4	1541
Area 2 Total	33	0	16	48	536	296	202	131	214	12060
Allegany	3	0	1	1	110	31	4	24	7	1062
Frederick	2	0	8	3	258	64	111	23	8	1947
Garrett	3	0	2	1	10	22	2	8	2	279
Montgomery	16	0	2	17	45	537	44	108	18	4045
Washington	7	0	2	5	82	39	17	18	23	1523
Area 3 Total	31	0	15	27	505	693	178	181	58	8856
Caroline	1	1	0	5	28	17	3	8	6	602
Cecil	1	0	0	5	74	25	10	11	29	1234
Dorchester	0	0	1	2	21	16	0	6	21	676
Kent	0	0	2	0	23	6	2	54	0	372
Queen Anne`s	0	0	1	7	18	12	7	3	4	500
Somerset	0	0	0	1	30	0	3	5	6	319
Talbot	0	0	0	4	22	16	1	6	5	495
Wicomico	3	0	3	6	161	29	3	31	8	1816
Worcester	0	0	0	0	66	23	6	152	5	1395
Area 4 Total	5	1	7	30	443	144	35	276	84	7409
Anne Arundel	13	0	20	16	184	119	10	52	34	5211
Calvert	1	0	0	5	12	34	0	4	4	948
Charles	1	0	1	2	169	31	11	11	5	1681
Prince George`s	14	0	0	1	40	44	2	32	22	4163
St. Mary`s	3	0	0	4	49	27	6	6	0	883
Area 5 Total	32	0	21	28	454	255	29	106	64	12886
Out of State	1	0	1	0	0	0	2	0	1	38
State Total	127	2	92	135	1944	1532	643	854	459*	53502

* For 459 complaints, offenses are not known due to linkage problems in ASSIST.

Table 21
Intake Cases by Alleged Offenses and County of Jurisdiction for African American Youth
FY 2003

Area	AGGRAVATED ASSAULT	CHILD ABUSE	GENERAL SEX	KIDNAPPING	MANSLAUGHTER	MURDER	ROBBERY	SEX FELONY	SIMPLE ASSAULT	ARSON FELONY / MISDEMEANOR	AUTO THEFT/ UNAUTHORIZED USE	BURGLARY / B & E	CARJACKING	MALICIOUS DESTRUCTION	TAMPERING	THEFT/SHOPLIFTING	TRESPASSING
Baltimore City	507	2	32	4	0	13	292	81	2027	53	885	384	18	438	0	413	357
Area 1 Total	507	2	32	4	0	13	292	81	2027	53	885	384	18	438	0	413	357
Baltimore	80	12	15	0	0	6	118	27	949	30	148	190	4	169	5	934	102
Carroll	1	1	0	0	0	0	0	1	23	0	1	3	0	5	0	11	4
Harford	4	0	3	0	0	0	11	3	162	2	13	29	0	35	3	147	7
Howard	4	1	5	0	0	0	19	5	196	5	35	39	0	31	0	135	25
Area 2 Total	89	14	23	0	0	6	148	36	1330	37	197	261	4	240	8	1227	138
Allegany	0	0	0	0	0	0	0	0	27	0	0	5	0	12	2	11	0
Frederick	6	0	0	0	0	0	4	5	102	0	9	17	0	18	0	53	8
Garrett	0	0	3	0	0	0	1	0	9	1	0	0	0	0	0	2	0
Montgomery	26	0	9	0	0	1	89	11	328	7	184	125	2	72	0	312	12
Washington	7	1	0	2	0	1	5	1	79	2	8	5	0	46	0	45	6
Area 3 Total	39	1	12	2	0	2	99	17	545	10	201	152	2	148	2	423	26
Caroline	2	0	0	0	0	1	2	0	79	3	8	1	0	13	1	16	2
Cecil	0	1	0	0	0	0	4	2	33	0	1	5	0	5	0	7	0
Dorchester	4	0	2	0	0	0	0	0	81	4	17	33	0	46	0	59	2
Kent	0	0	0	0	0	0	0	0	71	0	2	2	0	11	0	13	9
Queen Anne's	2	0	2	0	0	0	0	0	34	0	2	0	0	5	0	12	1
Somerset	3	0	0	0	0	0	1	0	75	6	0	1	0	18	0	20	5
Talbot	4	0	0	0	0	0	1	2	56	3	1	5	0	15	0	32	2
Wicomico	27	0	7	0	0	2	9	7	369	10	25	28	0	41	0	235	23
Worcester	4	0	0	0	0	0	2	3	33	0	11	6	0	13	0	50	3
Area 4 Total	46	1	11	0	0	3	19	14	831	26	67	81	0	167	1	444	47
Anne Arundel	24	0	6	0	0	0	55	17	505	6	112	84	4	119	3	500	62
Calvert	0	0	0	0	0	0	0	1	44	3	7	20	0	10	1	32	2
Charles	18	0	4	1	0	0	13	10	205	3	27	23	0	50	0	227	17
Prince George's	126	1	9	0	6	5	131	32	752	15	515	186	11	213	4	685	148
St. Mary's	1	0	1	0	0	0	1	4	97	2	9	4	0	78	0	47	3
Area 5 Total	169	1	20	1	6	5	200	64	1603	29	670	317	15	470	8	1491	232
Out of State	0	0	0	0	0	0	0	0	0	0	4	1	0	0	0	8	0
State Total	850	19	98	7	6	29	758	212	6336	155	2024	1196	39	1463	19	4006	800

**Table 21
Intake Cases by Alleged Offenses and County of Jurisdiction for African American Youth
FY 2003**

Area	ALCOHOL VIOLATION	GLUE SNIFFING & OTHER INHALANTS	NARCOTICS DISTRIBUTION	NARCOTICS POSSESSION	RUNAWAY	TRUANCY	UNGOVERNABLE	BOMB THREAT	CONSPIRACY	DEADLY WEAPON	DISTURBING THE PEACE	ESCAPE	FALSE ALARM	FALSE REPORT	FIREWORKS VIOLATION	HANDGUN VIOLATIONS	HARASSMENT	LOITERING
Baltimore City	57	0	2258	1101	5	57	130	4	21	288	741	4	3	17	4	52	26	475
Area 1 Total	57	0	2258	1101	5	57	130	4	21	288	741	4	3	17	4	52	26	475
Baltimore	23	0	45	170	2	0	20	2	0	55	117	8	1	13	3	5	16	3
Carroll	5	0	2	6	1	1	1	0	0	0	1	2	0	0	1	0	2	0
Harford	11	0	27	39	0	0	0	1	1	22	23	0	0	6	1	0	1	0
Howard	17	0	9	30	1	0	0	0	0	16	43	0	0	1	0	0	7	0
Area 2 Total	56	0	83	245	4	1	21	3	1	93	184	10	1	20	5	5	26	3
Allegany	15	0	4	5	8	3	6	0	1	0	5	2	0	1	0	0	1	0
Frederick	7	0	13	29	19	11	2	0	4	4	10	0	0	0	1	0	0	0
Garrett	0	0	0	2	0	0	0	0	0	0	0	2	0	0	0	0	0	0
Montgomery	42	0	35	107	1	0	2	3	13	27	26	0	0	4	0	1	1	0
Washington	6	0	12	5	0	0	18	0	1	3	13	0	0	0	0	1	0	0
Area 3 Total	70	0	64	148	28	14	28	3	19	34	54	4	0	5	1	2	2	0
Caroline	2	0	8	7	8	0	0	0	0	1	11	0	0	1	1	0	2	0
Cecil	2	0	4	1	0	0	0	0	0	0	1	0	0	0	0	0	0	0
Dorchester	5	0	5	19	16	0	0	1	0	3	76	1	2	1	0	0	1	0
Kent	2	0	7	14	0	0	0	0	0	0	3	0	0	2	0	0	0	0
Queen Anne's	4	0	2	9	12	1	1	0	0	1	6	0	0	1	0	0	1	0
Somerset	2	0	8	5	3	0	0	0	0	2	13	0	0	2	0	0	0	0
Talbot	8	0	4	14	11	0	0	10	0	1	13	0	0	1	0	0	0	0
Wicomico	15	0	41	25	23	2	0	1	1	8	52	4	3	3	0	2	6	0
Worcester	6	0	8	19	2	0	0	0	1	4	8	0	0	2	1	0	1	0
Area 4 Total	46	0	87	113	75	3	1	12	2	20	183	5	5	13	2	2	11	0
Anne Arundel	10	0	38	132	0	0	7	3	0	36	80	0	1	6	3	3	10	4
Calvert	8	0	6	15	25	0	0	0	0	4	8	0	0	3	0	0	0	2
Charles	12	0	8	32	1	0	0	7	1	8	51	0	0	2	0	1	0	0
Prince George's	13	0	84	146	3	7	115	4	1	96	106	5	2	26	1	18	25	4
St. Mary's	11	0	9	11	7	0	0	2	0	4	22	0	0	3	0	1	1	0
Area 5 Total	54	0	145	336	36	7	122	16	2	148	267	5	3	40	4	23	36	10
Out of State	0	0	2	3	0	1	0	0	0	0	0	0	0	0	0	0	0	0
State Total	283	0	2639	1946	148	83	302	38	45	583	1429	28	12	95	16	84	101	488

Table 21
Intake Cases by Alleged Offenses and County of Jurisdiction for African American Youth
FY 2003

Area	OTHER FELONY	PAGER AT SCHOOL	RECKLESS ENDANGERMENT	TELEPHONE MISUSE	TOBACCO VIOLATIONS	MOTOR VEHICLE/TRAFFIC VIOLATIONS	VIOLATION OF PROBATION	OTHER MISDEAMEANOR	OFFENSES NOT LINKED*	JURISDICTION TOTAL
Baltimore City	23	1	24	1	3	132	187	147	28	11295
Area 1 Total	23	1	24	1	3	132	187	147	28	11295
Baltimore	10	0	4	13	17	48	17	43	25	3449
Carroll	1	0	0	0	0	2	5	1	6	87
Harford	4	0	0	1	27	8	31	3	2	627
Howard	1	0	2	4	5	16	7	1	1	661
Area 2 Total	16	0	6	18	49	74	60	48	34	4824
Allegany	1	0	0	0	2	1	0	1	1	114
Frederick	0	0	0	2	25	9	37	5	2	402
Garrett	1	0	0	0	0	0	0	1	0	22
Montgomery	2	0	2	0	10	94	30	22	4	1604
Washington	2	0	1	0	7	2	4	4	8	295
Area 3 Total	6	0	3	2	44	106	71	33	15	2437
Caroline	1	0	0	4	5	2	2	5	2	190
Cecil	0	0	0	0	4	3	0	0	1	74
Dorchester	0	0	1	0	5	10	0	5	11	410
Kent	0	0	0	0	1	0	0	36	0	173
Queen Anne`s	0	0	0	2	4	1	2	2	2	109
Somerset	0	0	0	0	12	0	3	4	2	185
Talbot	0	0	0	4	3	6	0	0	2	198
Wicomico	3	0	0	4	46	14	2	21	4	1063
Worcester	0	0	0	0	8	1	3	9	2	200
Area 4 Total	4	0	1	14	88	37	12	82	26	2602
Anne Arundel	1	0	7	3	24	21	1	19	14	1920
Calvert	1	0	0	2	0	4	0	1	0	199
Charles	1	0	0	0	35	9	4	4	2	776
Prince George`s	11	0	0	0	26	40	2	25	22	3621
St. Mary`s	1	0	0	0	3	2	3	0	0	327
Area 5 Total	15	0	7	5	88	76	10	50	37	6843
Out of State	1	0	0	0	0	0	0	0	0	20
State Total	65	1	41	40	272	425	340	360	140*	28021

* For 140 complaints, offenses are not known due to linkage problems in ASSIST.

Table 22
Intake Cases by Alleged Offenses and County of Jurisdiction for Caucasian Youth
FY 2003

Area	AGGRAVATED ASSAULT	CHILD ABUSE	GENERAL SEX	KIDNAPPING	MANSLAUGHTER	MURDER	ROBBERY	SEX FELONY	SIMPLE ASSAULT	ARSON FELONY/ MISDEMEANOR	AUTOTHEFT/ UNAUTHORIZED USE	BURGLARY / B & E	CARJACKING	MALICIOUS DESTRUCTION	TAMPERING	THEFT/SHOPLIFTING	TRESPASSING
Baltimore City	49	0	1	0	0	4	21	6	182	5	58	60	1	66	0	66	20
Area 1 Total	49	0	1	0	0	4	21	6	182	5	58	60	1	66	0	66	20
Baltimore	50	5	10	0	1	2	43	37	740	30	89	187	0	406	4	482	91
Carroll	9	1	6	0	0	0	0	18	158	6	12	47	0	92	0	174	31
Harford	9	1	1	0	0	0	7	9	284	6	33	74	0	147	1	244	38
Howard	6	0	5	0	0	0	4	5	127	14	20	52	0	52	1	93	14
Area 2 Total	74	7	22	0	1	2	54	69	1309	56	154	360	0	697	6	993	174
Allegany	5	0	6	0	0	1	3	3	130	4	12	23	0	48	3	124	9
Frederick	11	2	3	0	0	0	4	13	203	16	16	65	0	105	0	250	17
Garrett	1	1	5	0	0	0	0	1	28	4	4	12	0	18	0	18	1
Montgomery	9	3	4	1	1	0	21	9	188	16	72	115	0	148	0	193	22
Washington	7	0	1	0	0	0	0	15	224	14	23	41	0	101	1	161	18
Area 3 Total	33	6	19	1	1	1	28	41	773	54	127	256	0	420	4	746	67
Caroline	3	0	1	1	1	0	0	3	85	4	9	25	0	53	0	33	6
Cecil	3	1	5	0	0	0	1	13	253	4	18	114	0	92	1	127	23
Dorchester	3	0	0	0	0	0	0	1	41	1	4	10	0	32	0	36	1
Kent	0	0	1	0	0	0	0	1	40	6	5	12	0	8	0	9	3
Queen Anne's	1	0	3	0	1	0	1	2	77	9	4	28	0	43	0	31	14
Somerset	2	0	1	0	0	0	0	2	18	1	6	6	0	20	0	12	5
Talbot	2	0	0	0	0	0	0	3	40	1	1	8	0	26	0	25	1
Wicomico	4	1	2	0	0	1	3	4	150	12	17	20	0	59	1	120	4
Worcester	2	0	8	0	0	0	1	1	53	1	7	15	0	55	1	104	6
Area 4 Total	20	2	21	1	2	1	6	30	757	39	71	238	0	388	3	497	63
Anne Arundel	27	1	14	1	1	0	12	23	616	38	91	153	0	376	10	598	92
Calvert	1	1	2	0	0	0	0	12	118	6	17	44	0	72	0	52	6
Charles	13	0	4	1	1	0	5	4	143	6	20	36	0	105	0	146	14
Prince George's	6	0	0	0	0	1	1	1	54	6	51	13	0	48	0	62	8
St. Mary's	5	1	5	0	1	0	2	3	102	3	10	25	0	42	0	66	4
Area 5 Total	52	3	25	2	3	1	20	43	1033	59	189	271	0	643	10	924	124
Out of State	0	0	0	0	0	0	0	0	1	0	1	1	0	0	0	2	0
State Total	228	18	88	4	7	9	129	189	4055	213	600	1186	1	2214	23	3228	448

Table 22
Intake Cases by Alleged Offenses and County of Jurisdiction for Caucasian Youth
FY 2003

Area	ALCOHOL VIOLATION	GLUE SNIFFING & OTHER INHALANTS	NARCOTICS DISTRIBUTION	NARCOTICS POSSESSION	RUNAWAY	TRUANCY	UNGOVERNABLE	BOMB THREAT	CONSPIRACY	DEADLY WEAPON	DISTURBING THE PEACE	ESCAPE	FALSE ALARM	FALSE REPORT	FIREWORKS VIOLATION	HANDGUN VIOLATIONS	HARASSMENT	LOITERING
Baltimore City	10	0	39	60	1	23	9	0	3	15	63	2	1	2	0	2	4	8
Area 1 Total	10	0	39	60	1	23	9	0	3	15	63	2	1	2	0	2	4	8
Baltimore	158	0	59	360	11	0	51	38	0	50	71	3	12	13	5	2	24	14
Carroll	119	0	16	120	46	15	7	6	4	12	11	0	3	8	1	0	5	0
Harford	62	1	25	194	0	0	0	3	1	41	40	0	2	5	4	0	10	0
Howard	104	0	10	95	5	0	1	0	0	14	29	0	0	6	1	0	3	0
Area 2 Total	443	1	110	769	62	15	59	47	5	117	151	3	17	32	11	2	42	14
Allegany	190	0	10	40	43	21	38	3	1	5	24	3	0	8	0	1	11	0
Frederick	63	0	18	134	54	26	13	0	7	9	30	2	2	6	6	2	4	0
Garrett	47	0	2	23	4	14	17	1	2	0	1	2	0	0	0	0	1	0
Montgomery	188	0	26	148	2	0	2	13	6	25	8	1	1	6	8	0	5	0
Washington	135	0	12	56	2	1	83	2	3	15	35	0	2	3	0	1	11	0
Area 3 Total	623	0	68	401	105	62	153	19	19	54	98	8	5	23	14	4	32	0
Caroline	26	0	3	34	42	3	0	0	1	1	15	0	0	0	0	0	5	0
Cecil	141	3	15	100	12	0	0	3	2	6	45	0	5	4	0	1	5	0
Dorchester	30	0	2	22	16	0	0	0	0	4	21	0	0	0	0	0	0	0
Kent	17	2	3	26	4	1	0	1	0	1	1	0	0	0	2	0	1	0
Queen Anne's	44	0	10	43	12	2	0	2	0	1	13	0	0	4	0	0	2	0
Somerset	6	0	2	8	9	0	0	1	0	1	3	0	0	0	0	1	1	0
Talbot	58	0	2	42	16	0	0	0	1	6	1	0	0	1	3	0	10	0
Wicomico	76	0	5	47	6	1	0	0	0	12	10	0	1	1	2	0	5	0
Worcester	382	0	14	197	19	0	1	0	4	7	63	0	0	3	0	0	0	0
Area 4 Total	780	5	56	519	136	7	1	7	8	39	172	0	6	13	7	2	29	0
Anne Arundel	135	0	55	405	0	1	5	6	2	59	87	1	1	28	5	2	17	1
Calvert	103	0	10	100	106	0	0	1	0	10	12	0	0	3	5	0	1	0
Charles	66	0	14	79	1	0	0	3	4	17	20	3	0	6	2	0	1	0
Prince George's	30	0	4	43	2	3	13	0	0	13	11	4	0	2	0	0	7	0
St. Mary's	75	0	6	59	22	0	0	4	0	3	18	0	0	7	0	0	2	0
Area 5 Total	409	0	89	686	131	4	18	14	6	102	148	8	1	46	12	2	28	1
Out of State	1	0	1	2	0	0	0	0	1	0	0	0	0	0	0	0	0	0
State Total	2266	6	363	2437	435	111	240	87	42	327	632	21	30	116	44	12	135	23

Table 22
Intake Cases by Alleged Offenses and County of Jurisdiction for Caucasian Youth
FY 2003

Area	OTHER FELONY	PAGER AT SCHOOL	RECKLESS ENDANGERMENT	TELEPHONE MISUSE	TOBACCO VIOLATIONS	MOTOR VEHICLE/TRAFFIC VIOLATIONS	VIOLATION OF PROBATION	OTHER MISDEAMEANOR	OFFENSES NOT LINKED	JURISDICTION TOTAL
Baltimore City	2	0	6	1	3	12	9	10	9	833
Area 1 Total	2	0	6	1	3	12	9	10	9	833
Baltimore	6	0	3	18	105	78	51	53	52	3414
Carroll	4	0	5	5	123	33	29	4	122	1252
Harford	4	0	1	1	192	49	59	20	0	1568
Howard	1	0	1	5	63	53	1	2	3	790
Area 2 Total	15	0	10	29	483	213	140	79	177	7024
Allegany	2	0	1	1	107	30	4	23	6	943
Frederick	2	0	8	1	227	53	70	17	4	1463
Garrett	2	0	2	1	9	22	2	7	2	254
Montgomery	11	0	0	17	28	284	10	67	7	1665
Washington	5	0	1	5	66	36	13	13	16	1122
Area 3 Total	22	0	12	25	437	425	99	127	35	5447
Caroline	0	1	0	1	23	12	1	3	4	399
Cecil	1	0	0	5	67	22	10	11	27	1140
Dorchester	0	0	0	2	16	6	0	1	10	259
Kent	0	0	2	0	22	6	2	16	0	192
Queen Anne`s	0	0	1	5	14	11	5	1	2	386
Somerset	0	0	0	1	18	0	0	1	4	129
Talbot	0	0	0	0	18	9	1	6	3	284
Wicomico	0	0	2	2	111	15	1	9	1	705
Worcester	0	0	0	0	56	22	2	142	3	1169
Area 4 Total	1	1	5	16	345	103	22	190	54	4663
Anne Arundel	12	0	12	13	158	95	9	33	20	3215
Calvert	0	0	0	3	12	29	0	3	4	733
Charles	0	0	1	2	131	22	7	7	3	887
Prince George`s	2	0	0	0	13	4	0	6	0	408
St. Mary`s	2	0	0	4	46	25	3	6	0	551
Area 5 Total	16	0	13	22	360	175	19	55	27	5794
Out of State	0	0	1	0	0	0	2	0	1	14
State Total	56	1	47	93	1628	928	291	461	303	23775

**Table 23
Intake Cases by Alleged Offenses and County of Jurisdiction for Other Youth
FY 2003**

Area	AGGRAVATED ASSAULT	CHILD ABUSE	GENERAL SEX	KIDNAPPING	MANSLAUGHTER	MURDER	ROBBERY	SEX FELONY	SIMPLE ASSAULT	ARSON FELONY/ MISDEMEANOR	AUTO THEFT/ UNAUTHORIZED USE	BURGLARY / B & E	CARJACKING	MALICIOUS DESTRUCTION	TAMPERING	THEFT/SHOPLIFTING	TRESPASSING
Baltimore City	4	0	0	0	0	0	5	2	30	0	10	5	0	4	0	8	0
Area 1 Total	4	0	0	0	0	0	5	2	30	0	10	5	0	4	0	8	0
Baltimore	1	0	2	0	0	0	0	0	8	3	4	0	0	17	0	16	2
Carroll	1	0	1	0	0	0	0	0	3	0	0	0	0	0	0	1	1
Harford	0	0	0	0	0	0	0	1	10	0	3	2	0	2	0	5	0
Howard	1	0	1	0	0	0	0	0	19	1	1	3	0	3	0	25	0
Area 2 Total	3	0	4	0	0	0	0	1	40	4	8	5	0	22	0	47	3
Allegany	0	0	0	0	0	0	0	0	0	0	0	0	0	0	0	1	0
Frederick	0	0	0	0	0	0	1	0	16	1	3	7	0	8	0	9	1
Garrett	0	0	0	0	0	0	0	0	0	0	1	0	0	0	0	0	0
Montgomery	13	1	1	0	0	1	19	12	81	5	94	69	0	49	0	88	7
Washington	1	0	0	0	0	0	0	1	18	2	0	0	0	51	0	7	0
Area 3 Total	14	1	1	0	0	1	20	13	115	8	98	76	0	108	0	105	8
Caroline	0	0	1	0	0	0	0	0	2	0	0	1	0	2	0	0	0
Cecil	1	0	0	0	0	0	0	0	3	0	0	3	0	1	0	1	0
Dorchester	1	0	0	0	0	0	0	0	4	0	0	0	0	0	0	1	0
Kent	0	0	0	0	0	0	0	0	3	0	0	0	0	0	0	1	0
Queen Anne's	0	0	0	0	0	0	0	1	2	0	0	0	0	0	0	1	0
Somerset	0	0	0	0	0	0	0	0	1	0	0	0	0	1	0	2	0
Talbot	0	0	0	0	0	0	0	1	3	0	0	0	0	0	0	0	0
Wicomico	0	0	1	0	0	0	0	0	14	0	2	1	0	1	1	9	0
Worcester	0	0	0	0	0	0	1	1	0	1	3	0	0	1	0	3	0
Area 4 Total	2	0	2	0	0	0	1	3	32	1	5	5	0	6	1	18	0
Anne Arundel	0	0	0	0	0	0	1	0	25	0	4	4	0	0	1	19	1
Calvert	0	0	0	0	0	0	0	0	4	0	0	0	0	0	0	0	0
Charles	1	0	0	1	0	0	0	1	1	0	0	1	0	0	0	4	2
Prince George's	3	0	0	0	0	0	3	2	24	3	19	4	0	14	0	20	3
St. Mary's	0	0	0	0	0	0	0	0	2	0	0	1	0	0	0	1	0
Area 5 Total	4	0	0	1	0	0	4	3	56	3	23	10	0	14	1	44	6
Out of State	0	0	0	0	0	0	1	0	0	0	1	0	0	0	0	1	0
State Total	27	1	7	1	0	1	31	22	273	16	145	101	0	154	2	223	17

**Table 23
Intake Cases by Alleged Offenses and County of Jurisdiction for Other Youth
FY 2003**

Area	ALCOHOL VIOLATION	GLUE SNIFFING & OTHER INHALANTS	NARCOTICS DISTRIBUTION	NARCOTICS POSSESSION	RUNAWAY	TRUANCY	UNGOVERNABLE	BOMB THREAT	CONSPIRACY	DEADLY WEAPON	DISTURBING THE PEACE	ESCAPE	FALSE ALARM	FALSE REPORT	FIREWORKS VIOLATION	HANDGUN VIOLATIONS	HARASSMENT	LOITERING
Baltimore City	1	0	20	6	0	3	1	0	1	4	9	0	0	1	0	0	0	4
Area 1 Total	1	0	20	6	0	3	1	0	1	4	9	0	0	1	0	0	0	4
Baltimore	0	0	3	8	0	0	1	0	0	1	1	0	0	0	0	0	2	0
Carroll	1	0	0	0	0	0	0	0	0	0	0	0	0	0	0	0	0	0
Harford	0	0	0	7	0	0	0	0	0	2	0	0	0	0	0	0	0	0
Howard	7	0	6	4	0	0	0	1	0	1	3	0	0	2	0	0	0	0
Area 2 Total	8	0	9	19	0	0	1	1	0	4	4	0	0	2	0	0	2	0
Allegany	2	0	0	0	1	0	0	0	0	0	0	0	0	0	0	0	0	0
Frederick	0	0	1	6	4	4	2	0	2	0	2	0	0	0	0	0	0	0
Garrett	0	0	0	1	0	0	0	0	0	0	0	0	0	0	0	0	0	0
Montgomery	54	0	5	42	2	0	8	1	2	17	3	0	0	2	1	0	0	0
Washington	1	0	5	3	0	0	3	0	0	0	3	0	0	0	0	0	1	0
Area 3 Total	57	0	11	52	7	4	13	1	4	17	8	0	0	2	1	0	1	0
Caroline	0	0	0	3	1	0	0	0	0	0	0	0	0	0	0	0	0	0
Cecil	3	0	0	4	0	0	0	0	0	0	0	0	0	0	0	0	0	0
Dorchester	0	0	0	1	0	0	0	0	0	0	0	0	0	0	0	0	0	0
Kent	1	0	0	0	0	0	0	0	0	0	0	0	0	0	0	0	0	0
Queen Anne's	1	0	0	0	0	0	0	0	0	0	0	0	0	0	0	0	0	0
Somerset	0	0	0	0	0	0	0	0	0	0	0	0	0	0	1	0	0	0
Talbot	2	0	1	2	0	1	0	0	0	1	0	0	0	0	0	0	0	0
Wicomico	1	0	1	3	2	0	0	0	0	1	1	0	1	0	0	0	0	0
Worcester	7	0	0	4	1	0	0	0	0	0	0	0	0	0	0	0	0	0
Area 4 Total	15	0	2	17	4	1	0	0	0	2	1	0	1	0	1	0	0	0
Anne Arundel	3	0	3	6	0	0	0	0	0	0	2	0	0	0	0	0	1	0
Calvert	3	0	1	3	2	0	0	1	0	0	1	0	0	0	0	0	0	0
Charles	0	0	1	1	0	0	0	0	0	0	1	0	0	0	0	1	0	0
Prince George's	3	0	2	6	0	1	6	0	0	8	7	0	1	0	0	0	1	0
St. Mary's	1	0	0	0	0	0	0	0	0	0	0	0	0	0	0	0	0	0
Area 5 Total	10	0	7	16	2	1	6	1	0	8	11	0	1	0	0	1	2	0
Out of State	0	0	0	0	0	0	1	0	0	0	0	0	0	0	0	0	0	0
State Total	91	0	49	110	13	9	22	3	5	35	33	0	2	5	2	1	5	4

Table 23
Intake Cases by Alleged Offenses and County of Jurisdiction for Other Youth
FY 2003

Area	OTHER FELONY	PAGER AT SCHOOL	RECKLESS ENDANGERMENT	TELEPHONE MISUSE	TOBACCO VIOLATIONS	MOTOR VEHICLE/TRAFFIC VIOLATIONS	VIOLATION OF PROBATION	OTHER MISDEAMEANOR	OFFENSES NOT LINKED	JURISDICTION TOTAL
Baltimore City	0	0	2	0	0	0	1	3	1	75
Area 1 Total	0	0	2	0	0	0	1	3	1	75
Baltimore	1	0	0	1	0	2	0	1	1	59
Carroll	0	0	0	0	0	0	2	0	2	11
Harford	0	0	0	0	2	0	0	1	0	26
Howard	1	0	0	0	2	7	0	2	0	66
Area 2 Total	2	0	0	1	4	9	2	4	3	162
Allegany	0	0	0	0	1	0	0	0	0	2
Frederick	0	0	0	0	6	2	4	1	2	61
Garrett	0	0	0	0	1	0	0	0	0	2
Montgomery	3	0	0	0	7	159	4	19	7	639
Washington	0	0	0	0	9	1	0	0	0	90
Area 3 Total	3	0	0	0	24	162	8	20	9	794
Caroline	0	0	0	0	0	3	0	0	0	9
Cecil	0	0	0	0	3	0	0	0	1	13
Dorchester	0	0	0	0	0	0	0	0	0	6
Kent	0	0	0	0	0	0	0	2	0	6
Queen Anne`s	0	0	0	0	0	0	0	0	0	4
Somerset	0	0	0	0	0	0	0	0	0	4
Talbot	0	0	0	0	1	1	0	0	0	6
Wicomico	0	0	1	0	4	0	0	1	3	38
Worcester	0	0	0	0	2	0	1	1	0	14
Area 4 Total	0	0	1	0	10	4	1	4	4	100
Anne Arundel	0	0	1	0	2	3	0	0	0	61
Calvert	0	0	0	0	0	1	0	0	0	5
Charles	0	0	0	0	3	0	0	0	0	14
Prince George`s	1	0	0	1	1	0	0	1	0	99
St. Mary`s	0	0	0	0	0	0	0	0	0	4
Area 5 Total	1	0	1	1	6	4	0	1	0	183
Out of State	0	0	0	0	0	0	0	0	0	3
State Total	6	0	4	2	44	179	12	32	17	1317

Table 24
Intake Cases by Alleged Offenses and County of Jurisdiction for Males
FY 2003

Area	AGGRAVATED ASSAULT	CHILD ABUSE	GENERAL SEX	KIDNAPPING	MANSLAUGHTER	MURDER	ROBBERY	SEX FELONY	SIMPLE ASSAULT	ARSON FELONY/ MISDEMEANOR	AUTO THEFT/ UNAUTHORIZED USE	BURGLARY/ B & E	CARJACKING	MALICIOUS DESTRUCTION	TAMPERING	THEFT/ SHOPLIFTING	TRESPASSING
Baltimore City	337	2	30	1	0	15	291	85	1395	50	828	377	18	393	0	373	305
Area 1 Total	337	2	30	1	0	15	291	85	1395	50	828	377	18	393	0	373	305
Baltimore	101	15	25	0	1	7	155	58	1135	50	196	322	4	490	5	860	163
Carroll	7	1	7	0	0	0	0	18	112	6	8	39	0	86	0	114	30
Harford	9	1	4	0	0	0	17	13	269	6	40	96	0	156	0	276	35
Howard	11	1	11	0	0	0	22	10	233	18	45	80	0	74	0	143	32
Area 2 Total	128	18	47	0	1	7	194	99	1749	80	289	537	4	806	5	1393	260
Allegany	3	0	4	0	0	1	2	3	109	4	8	18	0	48	3	94	4
Frederick	14	2	3	0	0	0	8	18	230	14	19	72	0	116	0	197	20
Garrett	0	1	7	0	0	0	1	1	27	4	4	9	0	16	0	16	1
Montgomery	37	4	14	1	1	1	122	32	444	24	311	290	2	250	0	403	34
Washington	12	1	1	2	0	1	5	16	218	18	24	38	0	185	1	130	22
Area 3 Total	66	8	29	3	1	3	138	70	1028	64	366	427	2	615	4	840	81
Caroline	2	0	2	0	1	1	2	2	104	7	13	23	0	54	1	43	7
Cecil	4	1	5	0	0	0	4	13	206	4	14	74	0	81	1	93	17
Dorchester	6	0	1	0	0	0	0	1	86	5	15	38	0	70	0	74	2
Kent	0	0	1	0	0	0	0	1	81	5	3	9	0	10	0	18	12
Queen Anne's	3	0	5	0	0	0	1	3	70	9	3	14	0	41	0	37	11
Somerset	3	0	1	0	0	0	1	2	66	7	5	7	0	35	0	29	6
Talbot	6	0	0	0	0	1	6	6	75	3	2	9	0	28	0	47	3
Wicomico	22	0	10	0	0	3	10	10	329	19	29	45	0	87	1	224	21
Worcester	2	0	4	0	0	0	4	5	61	2	16	20	0	59	1	92	8
Area 4 Total	48	1	29	0	1	4	23	43	1078	61	100	239	0	465	4	657	87
Anne Arundel	39	1	20	1	1	0	64	33	764	35	167	218	4	423	13	738	131
Calvert	1	1	2	0	0	0	0	13	108	9	14	57	0	70	1	64	7
Charles	26	0	6	3	0	0	15	14	242	9	37	52	0	149	0	211	28
Prince George's	106	1	8	0	3	2	129	33	540	20	493	178	11	242	3	597	132
St. Mary's	4	1	5	0	1	0	3	7	131	4	9	22	0	100	0	66	6
Area 5 Total	176	4	41	4	5	2	211	100	1785	77	720	527	15	984	17	1676	304
Out of State	0	0	0	0	0	0	1	0	1	0	4	2	0	0	0	10	0
State Total	755	33	176	8	8	31	857	397	7035	332	2303	2107	39	3263	30	4939	1037

**Table 24
Intake Cases by Alleged Offenses and County of Jurisdiction for Males
FY 2003**

Area	ALCOHOL VIOLATION	GLUE SNIFFING & OTHER INHALANTS	NARCOTICS DISTRIBUTION	NARCOTICS POSSESSION	RUNAWAY	TRUANCY	UNGOVERNABLE	BOMB THREAT	CONSPIRACY	DEADLY WEAPON	DISTURBING THE PEACE	ESCAPE	FALSE ALARM	FALSE REPORT	FIREWORKS VIOLATION	HANDGUN VIOLATIONS	HARASSMENT	LOITERING
Baltimore City	61	0	2197	1073	2	46	60	4	24	229	573	6	1	13	3	50	8	460
Area 1 Total	61	0	2197	1073	2	46	60	4	24	229	573	6	1	13	3	50	8	460
Baltimore	130	0	98	445	3	0	35	35	0	94	149	11	11	19	8	7	24	13
Carroll	89	0	14	106	17	5	1	6	2	10	9	2	0	8	1	0	4	0
Harford	44	1	46	199	0	0	0	2	2	56	44	0	2	8	5	0	8	0
Howard	80	0	22	103	3	0	0	0	0	29	59	0	0	7	0	0	7	0
Area 2 Total	343	1	180	853	23	5	36	43	4	189	261	13	13	42	14	7	43	13
Allegany	117	0	11	31	14	11	27	3	2	4	21	3	0	3	0	1	5	0
Frederick	42	0	29	139	27	21	9	0	9	10	27	0	1	3	7	2	4	0
Garrett	37	0	2	16	3	5	9	1	0	0	1	4	0	0	0	0	1	0
Montgomery	194	0	64	259	0	0	3	16	17	64	31	1	1	10	8	1	3	0
Washington	107	0	27	54	0	1	41	2	4	15	33	0	1	2	0	1	9	0
Area 3 Total	497	0	133	499	44	38	89	22	32	93	113	8	3	18	15	5	22	0
Caroline	24	0	10	39	28	1	0	0	1	2	16	0	0	0	1	0	4	0
Cecil	91	3	13	93	2	0	0	2	1	6	31	0	4	2	0	1	2	0
Dorchester	23	0	6	32	11	0	0	1	0	4	51	1	2	1	0	0	1	0
Kent	15	2	8	31	2	0	0	1	0	1	2	0	0	2	2	0	0	0
Queen Anne's	26	0	9	45	5	2	0	2	0	1	11	0	0	4	0	0	3	0
Somerset	4	0	10	12	8	0	0	1	0	2	11	0	0	0	1	1	1	0
Talbot	41	0	7	43	8	0	0	10	1	8	9	0	0	1	3	0	7	0
Wicomico	59	0	42	55	10	1	0	1	0	17	50	3	5	1	2	2	8	0
Worcester	239	0	22	189	14	0	0	0	5	11	53	0	0	5	1	0	1	0
Area 4 Total	522	5	127	539	88	4	0	18	8	52	234	4	11	16	10	4	27	0
Anne Arundel	109	0	91	452	0	1	5	8	2	81	109	1	0	29	7	5	19	5
Calvert	72	0	13	86	49	0	0	2	0	12	15	0	0	3	5	0	0	2
Charles	53	0	20	95	2	0	0	10	3	23	50	3	0	4	2	2	1	0
Prince George's	23	0	84	179	1	8	68	2	1	98	97	8	3	18	0	18	23	4
St. Mary's	64	0	14	57	4	0	0	6	0	6	27	0	0	1	0	1	1	0
Area 5 Total	321	0	222	869	56	9	73	28	6	220	298	12	3	55	14	26	44	11
Out of State	1	0	3	5	0	1	1	0	1	0	0	0	0	0	0	0	0	0
State Total	1744	6	2859	3833	213	102	258	115	74	783	1479	43	31	144	56	92	144	484

Table 24
Intake Cases by Alleged Offenses and County of Jurisdiction for Males
FY 2003

Area	OTHER FELONY	PAGER AT SCHOOL	RECKLESS ENDANGERMENT	TELEPHONE MISUSE	TOBACCO VIOLATIONS	MOTOR VEHICLE/ TRAFFIC VIOLATIONS	VIOLATION OF PROBATION	OTHER MISDEAMEANOR	OFFENSES NOT LINKED	JURISDICTION TOTAL
Baltimore City	15	1	32	0	6	129	196	138	33	9860
Area 1 Total	15	1	32	0	6	129	196	138	33	9860
Baltimore	16	0	7	21	85	99	51	68	51	5067
Carroll	3	0	3	3	76	30	31	2	84	934
Harford	4	0	1	0	136	42	62	15	2	1601
Howard	2	0	2	6	40	56	6	5	4	1111
Area 2 Total	25	0	13	30	337	227	150	90	141	8713
Allegany	2	0	0	0	52	22	4	15	1	650
Frederick	2	0	8	0	164	44	95	21	5	1382
Garrett	2	0	2	0	7	21	2	8	1	209
Montgomery	14	0	2	13	38	435	37	66	11	3258
Washington	5	0	1	2	58	28	17	16	18	1116
Area 3 Total	25	0	13	15	319	550	155	126	36	6615
Caroline	1	1	0	2	21	15	1	6	4	439
Cecil	1	0	0	2	51	19	7	11	21	880
Dorchester	0	0	0	1	11	14	0	5	15	477
Kent	0	0	2	0	17	5	2	41	0	273
Queen Anne's	0	0	1	5	14	7	6	3	1	342
Somerset	0	0	0	1	28	0	3	5	6	256
Talbot	0	0	0	3	20	10	1	6	4	362
Wicomico	2	0	3	2	102	24	1	28	7	1235
Worcester	0	0	0	0	48	19	6	111	4	1002
Area 4 Total	4	1	6	16	312	113	27	216	62	5266
Anne Arundel	12	0	16	12	142	100	10	40	26	3934
Calvert	0	0	0	4	8	25	0	2	3	648
Charles	1	0	1	2	118	23	9	7	3	1224
Prince George's	13	0	0	0	30	32	2	24	19	3253
St. Mary's	1	0	0	3	28	20	6	6	0	604
Area 5 Total	27	0	17	21	326	200	27	79	51	9663
Out of State	1	0	1	0	0	0	2	0	0	34
State Total	96	2	81	82	1300	1219	555	649	323	40151

**Table 25
Intake Cases by Alleged Offenses and County of Jurisdiction for Females
FY 2003**

Area	AGGRAVATED ASSAULT	CHILD ABUSE	GENERAL SEX	KIDNAPPING	MANSLAUGHTER	MURDER	ROBBERY	SEX FELONY	SIMPLE ASSAULT	ARSON FELONY/ MISDEMEANOR	AUTOTHEFT/ UNAUTHORIZED USE	BURGLARY / B & E	CARJACKING	MALICIOUS DESTRUCTION	TAMPERING	THEFT/SHOPLIFTING	TRESPASSING
Baltimore City	223	0	3	3	0	2	27	4	844	8	125	72	1	115	0	114	72
Area 1 Total	223	0	3	3	0	2	27	4	844	8	125	72	1	115	0	114	72
Baltimore	30	2	2	0	0	1	6	6	562	13	45	55	0	102	4	572	32
Carroll	4	1	0	0	0	0	0	1	72	0	5	11	0	11	0	72	6
Harford	4	0	0	0	0	0	1	0	187	2	9	9	0	28	4	120	10
Howard	0	0	0	0	0	0	1	0	109	2	11	14	0	12	1	110	7
Area 2 Total	38	3	2	0	0	1	8	7	930	17	70	89	0	153	9	874	55
Allegany	2	0	2	0	0	0	1	0	48	0	4	10	0	12	2	42	5
Frederick	3	0	0	0	0	0	1	0	91	3	9	17	0	15	0	115	6
Garrett	1	0	1	0	0	0	0	0	10	1	1	3	0	2	0	4	0
Montgomery	11	0	0	0	0	1	7	0	153	4	39	19	0	19	0	190	7
Washington	3	0	0	0	0	0	0	1	103	0	7	8	0	13	0	83	2
Area 3 Total	20	0	3	0	0	1	9	1	405	8	60	57	0	61	2	434	20
Caroline	3	0	0	1	0	0	0	1	62	0	4	4	0	14	0	6	1
Cecil	0	1	0	0	0	0	1	2	83	0	5	48	0	17	0	42	6
Dorchester	2	0	1	0	0	0	0	0	40	0	6	5	0	8	0	22	1
Kent	0	0	0	0	0	0	0	0	33	1	4	5	0	9	0	5	0
Queen Anne's	0	0	0	0	1	0	0	0	43	0	3	14	0	7	0	7	4
Somerset	2	0	0	0	0	0	0	0	28	0	1	0	0	4	0	5	4
Talbot	0	0	0	0	0	0	0	0	24	1	0	4	0	13	0	10	0
Wicomico	9	1	0	0	0	0	2	1	204	3	15	4	0	14	1	140	6
Worcester	4	0	4	0	0	0	0	0	25	0	5	1	0	10	0	65	1
Area 4 Total	20	2	5	1	1	0	3	4	542	5	43	85	0	96	1	302	23
Anne Arundel	12	0	0	0	0	0	4	7	382	9	40	23	0	72	1	379	24
Calvert	0	0	0	0	0	0	0	0	58	0	10	7	0	12	0	20	1
Charles	6	0	2	0	1	0	3	1	107	0	10	8	0	6	0	166	5
Prince George's	29	0	1	0	3	4	6	2	290	4	92	25	0	33	1	170	27
St. Mary's	2	0	1	0	0	0	0	0	70	1	10	8	0	20	0	48	1
Area 5 Total	49	0	4	0	4	4	13	10	907	14	162	71	0	143	2	783	58
Out of State	0	0	0	0	0	0	0	0	0	0	2	0	0	0	0	1	0
State Total	350	5	17	4	5	8	60	26	3628	52	462	374	1	568	14	2508	228

**Table 25
Intake Cases by Alleged Offenses and County of Jurisdiction for Females
FY 2003**

Area	ALCOHOL VIOLATION	GLUE SNIFFING & OTHER INHALANTS	NARCOTICS DISTRIBUTION	NARCOTICS POSSESSION	RUNAWAY	TRUANCY	UNGOVERNABLE	BOMB THREAT	CONSPIRACY	DEADLY WEAPON	DISTURBING THE PEACE	ESCAPE	FALSE ALARM	FALSE REPORT	FIREWORKS VIOLATION	HANDGUN VIOLATIONS	HARASSMENT	LOITERING
Baltimore City	7	0	120	94	4	37	80	0	1	78	240	0	3	7	1	4	22	27
Area 1 Total	7	0	120	94	4	37	80	0	1	78	240	0	3	7	1	4	22	27
Baltimore	51	0	9	93	10	0	37	5	0	12	40	0	2	7	0	0	18	4
Carroll	36	0	4	20	30	11	7	0	2	2	3	0	3	0	1	0	3	0
Harford	29	0	6	41	0	0	0	2	0	9	19	0	0	3	0	0	3	0
Howard	48	0	3	26	3	0	1	1	0	2	16	0	0	2	1	0	3	0
Area 2 Total	164	0	22	180	43	11	45	8	2	25	78	0	5	12	2	0	27	4
Allegany	90	0	3	14	38	13	17	0	0	1	8	2	0	6	0	0	7	0
Frederick	28	0	3	30	50	20	8	0	4	3	15	2	1	3	0	0	0	0
Garrett	10	0	0	10	1	9	8	0	2	0	0	0	0	0	0	0	0	0
Montgomery	90	0	2	38	5	0	9	1	4	5	6	0	0	2	1	0	3	0
Washington	35	0	2	10	2	0	63	0	0	3	18	0	1	1	0	1	3	0
Area 3 Total	253	0	10	102	96	42	105	1	10	12	47	4	2	12	1	1	13	0
Caroline	4	0	1	5	23	2	0	0	0	0	10	0	0	1	0	0	3	0
Cecil	55	0	6	12	10	0	0	1	1	0	15	0	1	2	0	0	3	0
Dorchester	12	0	1	10	21	0	0	0	0	3	46	0	0	0	0	0	0	0
Kent	5	0	2	9	2	1	0	0	0	0	2	0	0	0	0	0	1	0
Queen Anne's	23	0	3	7	19	1	1	0	0	1	8	0	0	1	0	0	0	0
Somerset	4	0	0	1	4	0	0	0	0	1	5	0	0	2	0	0	0	0
Talbot	27	0	0	15	19	1	0	0	0	0	5	0	0	1	0	0	3	0
Wicomico	33	0	5	20	21	2	0	0	1	4	13	1	0	3	0	0	3	0
Worcester	156	0	0	31	8	0	1	0	0	0	18	0	0	0	0	0	0	0
Area 4 Total	319	0	18	110	127	7	2	1	2	9	122	1	1	10	0	0	13	0
Anne Arundel	39	0	5	91	0	0	7	1	0	14	60	0	2	5	1	0	9	0
Calvert	42	0	4	32	84	0	0	0	0	2	6	0	0	3	0	0	1	0
Charles	25	0	3	17	0	0	0	0	2	2	22	0	0	4	0	0	0	0
Prince George's	23	0	6	16	4	3	66	2	0	19	27	1	0	10	1	0	10	0
St. Mary's	23	0	1	13	25	0	0	0	0	1	13	0	0	9	0	0	2	0
Area 5 Total	152	0	19	169	113	3	73	3	2	38	128	1	2	31	2	0	22	0
Out of State	0	0	0	0	0	0	0	0	0	0	0	0	0	0	0	0	0	0
State Total	895	0	189	655	383	100	305	13	17	162	615	6	13	72	6	5	97	31

**Table 25
Intake Cases by Alleged Offenses and County of Jurisdiction for Females
FY 2003**

Area	OTHER FELONY	PAGER AT SCHOOL	RECKLESS ENDANGERMENT	TELEPHONE MISUSE	TOBACCO VIOLATIONS	MOTOR VEHICLE/TRAFFIC VIOLATIONS	VIOLATION OF PROBATION	OTHER MISDEAMEANOR	OFFENSES NOT LINKED	JURISDICTION TOTAL
Baltimore City	10	0	0	2	0	15	1	22	5	2393
Area 1 Total	10	0	0	2	0	15	1	22	5	2393
Baltimore	1	0	0	11	37	29	17	29	27	1871
Carroll	2	0	2	2	47	5	5	3	46	417
Harford	4	0	0	2	85	15	28	9	0	629
Howard	1	0	1	3	30	20	2	0	0	430
Area 2 Total	8	0	3	18	199	69	52	41	73	3347
Allegany	1	0	1	1	58	9	0	9	6	412
Frederick	0	0	0	3	94	20	16	2	3	565
Garrett	1	0	0	1	3	1	0	0	1	70
Montgomery	2	0	0	4	7	102	7	42	7	787
Washington	2	0	1	3	24	11	0	2	5	407
Area 3 Total	6	0	2	12	186	143	23	55	22	2241
Caroline	0	0	0	3	7	2	2	2	2	163
Cecil	0	0	0	3	23	6	3	0	8	354
Dorchester	0	0	1	1	10	2	0	1	6	199
Kent	0	0	0	0	6	1	0	12	1	99
Queen Anne`s	0	0	0	2	4	5	1	0	3	158
Somerset	0	0	0	0	2	0	0	0	0	63
Talbot	0	0	0	1	2	6	0	0	1	133
Wicomico	1	0	0	4	59	5	2	3	1	581
Worcester	0	0	0	0	18	4	0	41	1	393
Area 4 Total	1	0	1	14	131	31	8	59	23	2143
Anne Arundel	1	0	4	4	42	19	0	12	8	1277
Calvert	1	0	0	1	4	9	0	2	1	300
Charles	0	0	0	0	51	8	2	4	2	457
Prince George`s	1	0	0	1	10	12	0	8	3	910
St. Mary`s	2	0	0	1	21	7	0	0	0	279
Area 5 Total	5	0	4	7	128	55	2	26	14	3223
Out of State	0	0	0	0	0	0	0	0	1	4
State Total	30	0	10	53	644	313	86	203	138	13351

Table 26
Alleged Offense Rates Per 1,000 Population by Offense Category & County of Jurisdiction
FY 2003

Area	10-17 Yrs. Population	Person-to-Person	Per 1,000 Population	Property	Per 1,000 Population	Alcohol	Per 1,000 Population	Narcotics	Per 1,000 Population	CINS	Per 1,000 Population	Other	Per 1,000 Population	County of Jurisdiction	County of Jurisdiction Per 1,000 Population
Baltimore City	66922	3262	48.7	2851	42.6	68	1.0	3484	52.1	229	3.4	2359	35.2	12253	183.1
Area 1 Total	66922	3262	48.7	2851	42.6	68	1.0	3484	52.1	229	3.4	2359	35.2	12253	183.1
Baltimore	85670	2106	24.6	2913	34.0	181	2.1	645	7.5	85	1.0	1008	11.8	6938	81.0
Carroll	19230	223	11.6	388	20.2	125	6.5	144	7.5	71	3.7	400	20.8	1351	70.3
Harford	26765	505	18.9	791	29.6	73	2.7	292	10.9	0	0.0	569	21.3	2230	83.3
Howard	32522	398	12.2	549	16.9	128	3.9	154	4.7	7	0.2	305	9.4	1541	47.4
Area 2 Total	164187	3232	19.7	4641	28.3	507	3.1	1235	7.5	163	1.0	2282	13.9	12060	73.5
Allegany	6902	175	25.4	254	36.8	207	30.0	59	8.5	120	17.4	247	35.8	1062	153.9
Frederick	25507	370	14.5	603	23.6	70	2.7	201	7.9	135	5.3	568	22.3	1947	76.3
Garrett	3083	49	15.9	61	19.8	47	15.2	28	9.1	35	11.4	59	19.1	279	90.5
Montgomery	103680	828	8.0	1592	15.4	284	2.7	363	3.5	17	0.2	961	9.3	4045	39.0
Washington	14168	363	25.6	531	37.5	142	10.0	93	6.6	107	7.6	287	20.3	1523	107.5
Area 3 Total	153340	1785	11.6	3041	19.8	750	4.9	744	4.9	414	2.7	2122	13.8	8856	57.8
Caroline	3522	181	51.4	177	50.3	28	8.0	55	15.6	54	15.3	107	30.4	602	170.9
Cecil	11018	320	29.0	402	36.5	146	13.3	124	11.3	12	1.1	230	20.9	1234	112.0
Dorchester	3223	137	42.5	246	76.3	35	10.9	49	15.2	32	9.9	177	54.9	676	209.7
Kent	1925	116	60.3	81	42.1	20	10.4	50	26.0	5	2.6	100	51.9	372	193.2
Queen Anne's	4864	126	25.9	150	30.8	49	10.1	64	13.2	28	5.8	83	17.1	500	102.8
Somerset	2069	103	49.8	103	49.8	8	3.9	23	11.1	12	5.8	70	33.8	319	154.2
Talbot	3514	112	31.9	120	34.1	68	19.4	65	18.5	28	8.0	102	29.0	495	140.9
Wicomico	9177	601	65.5	609	66.4	92	10.0	122	13.3	34	3.7	358	39.0	1816	197.9
Worcester	4700	109	23.2	280	59.6	395	84.0	242	51.5	23	4.9	346	73.6	1395	296.8
Area 4 Total	44012	1805	41.0	2168	49.3	841	19.1	794	18.0	228	5.2	1573	35.7	7409	168.3
Anne Arundel	58102	1328	22.9	2277	39.2	148	2.5	639	11.0	13	0.2	806	13.9	5211	89.7
Calvert	11568	183	15.8	272	23.5	114	9.9	135	11.7	133	11.5	111	9.6	948	82.0
Charles	17316	426	24.6	681	39.3	78	4.5	135	7.8	2	0.1	359	20.7	1681	97.1
Prince George's	94310	1157	12.3	2028	21.5	46	0.5	285	3.0	150	1.6	497	5.3	4163	44.1
St. Mary's	11711	225	19.2	295	25.2	87	7.4	85	7.3	29	2.5	162	13.8	883	75.4
Area 5 Total	193007	3319	17.2	5553	28.8	473	2.5	1279	6.6	327	1.7	1935	10.0	12886	66.8
State Total	621468	13405	21.6	18273	29.4	2640	4.2	7544	12.1	1363	2.2	10277	16.5	53502	86.1

Note: 1. FY 2003 10-17 years of age population projections are taken from "Public School Enrollment Projections 2003-2012" report prepared by Maryland Office of State Planning.

2. Total referrals exclude 38 out-of-state referrals.

Table 27
Rates of Total and Delinquent Referrals Per 1,000 Youth Population
FY 2003

County of Residence	10-17 Years Population	Total Referrals	Per 1,000 Population	Delinquent Referrals	Per 1,000 Population
Baltimore City	66922	12253	183.1	11950	178.6
Area 1 Total	66922	12253	183.1	11950	178.6
Baltimore	85670	6938	81.0	6550	76.5
Carroll	19230	1351	70.3	1032	53.7
Harford	26765	2230	83.3	1936	72.3
Howard	32522	1541	47.4	1336	41.1
Area 2 Total	164187	12060	73.5	10854	66.1
Allegany	6902	1062	153.9	625	90.6
Frederick	25507	1947	76.3	1484	58.2
Garrett	3083	279	90.5	187	60.7
Montgomery	103680	4045	39.0	3699	35.7
Washington	14168	1523	107.5	1192	84.1
Area 3 Total	153340	8856	57.8	7187	46.9
Caroline	3522	602	170.9	492	139.7
Cecil	11018	1234	112.0	1002	90.9
Dorchester	3223	676	209.7	588	182.4
Kent	1925	372	193.2	324	168.3
Queen Anne's	4864	500	102.8	405	83.3
Somerset	2069	319	154.2	269	130.0
Talbot	3514	495	140.9	377	107.3
Wicomico	9177	1816	197.9	1529	166.6
Worcester	4700	1395	296.8	911	193.8
Area 4 Total	44012	7409	168.3	5897	134.0
Anne Arundel	58102	5211	89.7	4866	83.7
Calvert	11568	948	82.0	689	59.6
Charles	17316	1681	97.1	1432	82.7
Prince George's	94310	4163	44.1	3927	41.6
St. Mary's	11711	883	75.4	718	61.3
Area 5 Total	193007	12886	66.8	11632	60.3
State Total	621468	53502	86.1	47555	76.5

Note: 1. FY 2003 10-17 years of age population projections are taken from "Public School Enrollment Projections 2003-2012" report prepared by Maryland Office of State Planning.

2. Total referrals exclude 38 out-of-state cases and total delinquent referrals exclude 35 out-of-state referrals.

Table 28
Court Dispositions of Formalized Cases by Gender
FY 2003

Court Dispositions	Number of Females	Percent Total Females	Number of Males	Percent of Males	Jurisdiction Total	Percent Total
Probation/Probation to Parent/Protective Supervision	740	19.2	3915	21.3	4655	20.9
Dismissed/Closed	583	15.1	3388	18.4	3971	17.8
Committed to DJJ for Placement	228	5.9	1910	10.4	2138	9.6
Continued Case/STET	599	15.5	2212	12.0	2811	12.6
Petition Denied by State Attorney	842	21.8	2990	16.2	3832	17.2
Jurisdiction Waived	4	0.1	219	1.2	223	1.0
Inter Region/State	4	0.1	20	0.1	24	0.1
Nol Pros	120	3.1	368	2.0	488	2.2
Transfer from One Juris. To Another	68	1.8	282	1.5	350	1.6
Writ Pending	76	2.0	382	2.1	458	2.1
Others	122	3.2	519	2.8	641	2.9
Disposition Pending	463	12.0	2101	11.4	2564	11.5
Petition Withdrawn	9	0.2	98	0.5	107	0.5
State Total	3858	100.0	18404	100.0	22262	100.0

Table 29
Court Dispositions of Formalized Cases by Race
FY 2003

Court Dispositions	Number of African American	Percent Total African American	Number of White	Percent of White	Number of Other	Percent of Other	Jurisdiction Total	Percent Total
Probation/Probation to Parent/Protective Supervision	2401	17.7	1977	25.3	277	32.0	4655	20.9
Dismissed/Closed	2840	20.9	976	12.5	155	17.9	3971	17.8
Committed to DJJ for Placement	1253	9.2	798	10.2	87	10.0	2138	9.6
Continued Case/STET	1455	10.7	1304	16.7	52	6.0	2811	12.6
Petition Denied by State Attorney	2860	21.1	896	11.5	76	8.8	3832	17.2
Jurisdiction Waived	145	1.1	73	0.9	5	0.6	223	1.0
Inter Region/State	13	0.1	11	0.1	0	0.0	24	0.1
No! Pros	209	1.5	265	3.4	14	1.6	488	2.2
Transfer from One Juris. To Another	214	1.6	127	1.6	9	1.0	350	1.6
Writ Pending	330	2.4	88	1.1	40	4.6	458	2.1
Others	314	2.3	300	3.8	27	3.1	641	2.9
Disposition Pending	1490	11.0	963	12.3	111	12.8	2564	11.5
Petition Withdrawn	55	0.4	39	0.5	13	1.5	107	0.5
State Total	13579	100.0	7817	100.0	866	100.0	22262	100.0

**Table 30
Court Dispositions by County of Jurisdiction
FY 2003**

County of Jurisdiction	Jurisdiction Waived	Committed to DJJ for Placement	Probation/Probation to Parent/Protective Supervision	Dismissed/Closed	Continued Cases/ STET	Petition Denied by State Attorney	Petition Withdrawn	Inter Region/State	Nol Pros	Transfer from one Jurisdiction to Another	Writ Pending	Others	Disposition Pending	Jurisdiction Total
Baltimore City	29	441	994	2144	330	2498	35	0	2	19	30	82	576	7180
Area 1 Total	29	441	994	2144	330	2498	35	0	2	19	30	82	576	7180
Baltimore	61	206	662	215	1392	52	0	0	301	124	40	108	608	3769
Carroll	2	70	163	9	57	48	2	0	24	2	0	19	83	479
Harford	24	132	201	88	3	59	12	1	6	6	8	63	100	703
Howard	2	20	123	81	48	128	1	0	1	16	4	73	56	553
Area 2 Total	89	428	1149	393	1500	287	15	1	332	148	52	263	847	5504
Allegany	1	44	63	28	1	36	0	0	11	6	2	14	16	222
Frederick	14	91	144	251	15	125	0	0	3	9	14	33	67	766
Garrett	1	8	12	5	1	5	2	0	2	9	0	3	4	52
Montgomery	1	254	590	420	90	57	17	4	6	30	113	42	247	1871
Washington	9	63	212	20	83	21	5	1	10	11	3	14	61	513
Area 3 Total	26	460	1021	724	190	244	24	5	32	65	132	106	395	3424
Caroline	2	11	30	11	5	44	0	0	6	0	0	2	29	140
Cecil	9	100	115	76	24	71	2	0	1	3	22	1	67	491
Dorchester	4	8	18	33	5	56	0	0	0	0	0	1	30	155
Kent	0	10	31	30	2	27	0	0	0	1	0	3	7	111
Queen Anne's	0	24	21	17	0	19	0	0	1	1	3	5	6	97
Somerset	16	10	28	2	2	3	0	0	5	0	0	2	6	74
Talbot	7	23	48	22	0	18	1	0	0	1	0	5	9	134
Wicomico	16	19	98	11	34	152	0	0	30	4	0	2	25	391
Worcester	8	22	56	10	5	12	0	0	10	4	1	0	38	166
Area 4 Total	62	227	445	212	77	402	3	0	53	14	26	21	217	1759
Anne Arundel	9	210	376	176	435	186	0	2	1	57	16	102	201	1771
Calvert	0	18	120	3	73	34	0	1	49	6	0	6	19	329
Charles	1	82	133	11	120	30	29	0	4	19	16	10	35	490
Prince George's	7	251	331	304	58	92	1	4	1	21	185	48	198	1501
St. Mary's	0	15	75	4	27	55	0	1	14	1	0	3	72	267
Area 5 Total	17	576	1035	498	713	397	30	8	69	104	217	169	525	4358
Out of State	0	6	11	0	1	4	0	10	0	0	1	0	4	37
State Total	223	2138	4655	3971	2811	3832	107	24	488	350	458	641	2564	22262