

INTRODUCTION

The Maryland Department of Juvenile Services is pleased to present its 2002 Annual Statistical Report. The Annual Statistical Report brings together, in a single volume, descriptive statistics¹ of the Maryland Department of Juvenile Service (DJS). This report serves as an essential reference book. The numbers contained in this report are used in capital planning, three-year planning and budget documents. Executive, professional, and legislative staff as well as the public relies on these statistics. The Annual Statistical Report contains two sections.

Section One of the report provides the intake profile, which includes case-related information from referral to the court disposition stage. In FY 2002, the Department's Intake Officers handled 54,242 cases. This number of cases represents 35,377 youth. The intake process determines if a youth requires formal court intervention or can be served by pre-court supervision or by processes known as resolving or disapproving the case at intake. A case is counted each time a youth is referred on a new charge during the year.

Section Two provides information about services provided to youths in nonresidential and residential programs. This section contains statistics on DJJ contracted programs, community supervision, and residential services and secure commitment programs. In FY 2002, the Department served 5,464 youths in out of home placements, including secure detention programs. A separate table of contents is provided for Sections One and Two.

¹

The statistics included in this report have been subject to a detailed quality assurance process that involved removing erroneous cases and minimizing the occurrences of missing data. Because of this quality assurance review, the statistics presented in this report may slightly vary from those included in earlier Departmental documents.

Section One

Intake Data

TABLE OF CONTENTS

SECTION ONE

	Page
FLOWCHART OF CASE REFERRALS	i
Table 1 Number and Percent of Intake cases by County of Jurisdiction and by Area: FY 2000 - FY 2002.....	1
Table 2 Manner of Handling Referrals at Intake by Jurisdiction and by Area: FY 2002	2
Table 3 Rank Order of Formal Cases by County of Jurisdiction: FY 2002	3
Table 4 Number and Percent of Total Intake Cases by Race: FY 2002.....	3
Table 5 Intake Cases by Race and by County of Jurisdiction: FY 2002.....	4
Table 6 Manner of Handling Intake Cases by Race and County of Jurisdiction: FY 2002	5
Table 6 Manner of Handling Intake Cases by Race and County of Jurisdiction: FY 2002	6
Table 7 Number and Percent of Total Intake Cases by Gender: FY 2002	7
Table 8 Manner of Handling Intake Cases by Gender and County of Jurisdiction: FY 2002.....	8
Table 9 Intake Cases by Race, Gender and County of Jurisdiction: FY 2002	9
Table 10 Number and Percent of Total Intake Cases by Age: FY 2002	10
Table 11 Intake Cases by Age and County of Jurisdiction: FY 2002	11
Table 12 Intake Cases by Age and County of Jurisdiction for African American Youth: FY 2002.....	12
Table 13 Intake Cases by Age and County of Jurisdiction for Caucasian Youth: FY 2002	13
Table 14 Intake Cases by Age and County of Jurisdiction for All Other Youth: FY 2002.....	14
Table 15 Intake Cases by Age and County of Jurisdiction for Males: FY 2002.....	15
Table 16 Intake Cases by Age and County of Jurisdiction for Females: FY 2002	16
Table 17 Number & Percent of Total Intake Cases by Referral Source: FY 2002	17
Table 18 Intake Cases by Referral Source & County of Jurisdiction: FY 2002	17
Table 19 Intake Cases – Offense by Offense Type: FY 2000 – FY 2002	18
Table 20 Intake Cases by Alleged Offenses & County of Jurisdiction: FY 2002	19
Table 20 Intake Cases by Alleged Offenses & County of Jurisdiction: FY 2002	20

Table 20	Intake Cases by Alleged Offenses & County of Jurisdiction: FY 2002	21
Table 21	Intake Cases by Alleged Offenses & County of Jurisdiction for African American Youth: FY 2002	22
Table 21	Intake Cases by Alleged Offenses & County of Jurisdiction for African American Youth: FY 2002	23
Table 21	Intake Cases by Alleged Offenses & County of Jurisdiction for African American Youth: FY 2002	24
Table 22	Intake Cases by Alleged Offenses & County of Jurisdiction for Caucasian Youth: FY 2002	25
Table 22	Intake Cases by Alleged Offenses & County of Jurisdiction for Caucasian Youth: FY 2002	26
Table 22	Intake Cases by Alleged Offenses & County of Jurisdiction for Caucasian Youth: FY 2002	27
Table 23	Intake Cases by Alleged Offenses & County of Jurisdiction for All Other Youth: FY 2002	28
Table 23	Intake Cases by Alleged Offenses & County of Jurisdiction for All Other Youth: FY 2002	29
Table 23	Intake Cases by Alleged Offenses & County of Jurisdiction for All Other Youth: FY 2002	30
Table 24	Intake Cases by Alleged Offenses & County of Jurisdiction for Males: FY 2002	31
Table 24	Intake Cases by Alleged Offenses & County of Jurisdiction for Males: FY 2002	32
Table 24	Intake Cases by Alleged Offenses & County of Jurisdiction for Males: FY 2002	33
Table 25	Intake Cases by Alleged Offenses & County of Jurisdiction for Females: FY 2002	34
Table 25	Intake Cases by Alleged Offenses & County of Jurisdiction for Females: FY 2002	35
Table 25	Intake Cases by Alleged Offenses & County of Jurisdiction for Females: FY 2002	36
Table 26	Alleged Offense Rates Per 1,000 Population by Offense Category & County of Jurisdiction: FY 2002	37
Table 27	Rates of Total and Delinquent Referrals Per 1,000 Youth Population: FY 2002	38
Table 28	Court Dispositions of Formalized Cases by Gender : FY 2002.....	39
Table 29	Court Dispositions of Formalized Cases by Race : FY 2002	40
Table 30	Court Disposition Cases by County of Jurisdiction : FY 2002.....	41

**Flowchart of Case Referrals in the Maryland Juvenile Services System
FY 2002**

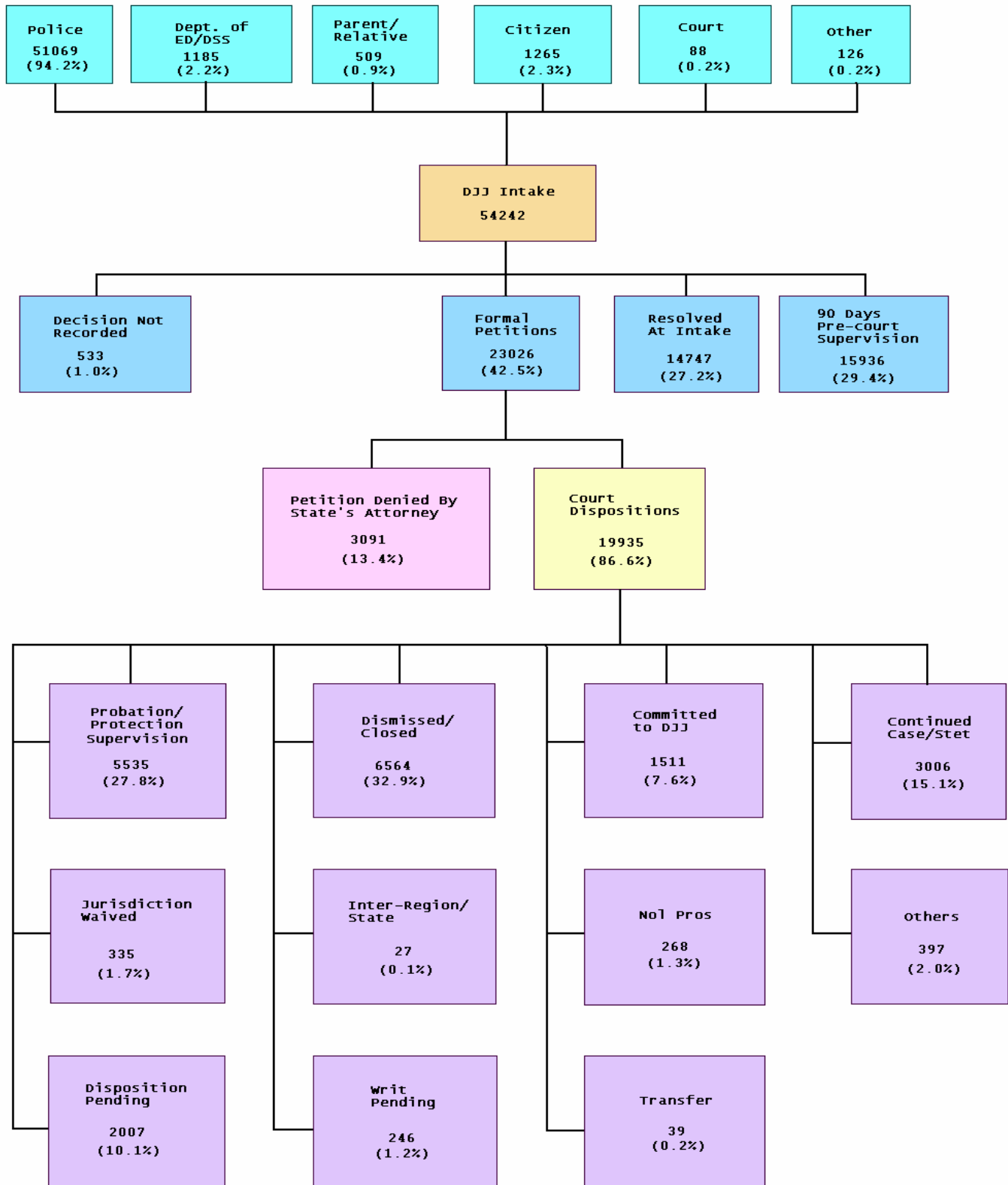


Table 1
Number and Percent of Intake Cases by County of Jurisdiction and by Area
FY 2000 - FY 2002

Area	2000 Cases	Percent of Cases	2001 Cases	Percent of Cases	2002 Cases	Percent of Cases	Percent Change '01 to '02
Baltimore City	10742	19.6	9600	18.3	12055	22.2	25.6%
Area 1 Total	10742	19.6	9600	18.3	12055	22.2	25.6%
Baltimore	8356	15.2	7972	15.2	7408	13.7	-7.1%
Carroll	1560	2.8	1291	2.5	1320	2.4	2.2%
Harford	2080	3.8	1812	3.5	2173	4.0	19.9%
Howard	1601	2.9	2353	4.5	2038	3.8	-13.4%
Area 2 Total	13597	24.8	13428	25.6	12939	23.9	-3.6%
Allegany	1197	2.2	1085	2.1	1009	1.9	-7.0%
Frederick	2321	4.2	1842	3.5	2234	4.1	21.3%
Garrett	263	0.5	213	0.4	254	0.5	19.2%
Montgomery	4213	7.7	3450	6.6	4202	7.7	21.8%
Washington	1355	2.5	1393	2.7	1543	2.8	10.8%
Area 3 Total	9349	17.0	7983	15.2	9242	17.0	15.8%
Caroline	646	1.2	548	1.0	571	1.1	4.2%
Cecil	973	1.8	977	1.9	1134	2.1	16.1%
Dorchester	675	1.2	644	1.2	638	1.2	-0.9%
Kent	278	0.5	405	0.8	338	0.6	-16.5%
Queen Anne's	401	0.7	543	1.0	503	0.9	-7.4%
Somerset	254	0.5	271	0.5	269	0.5	-0.7%
Talbot	466	0.8	489	0.9	481	0.9	-1.6%
Wicomico	2048	3.7	1787	3.4	1647	3.0	-7.8%
Worcester	1172	2.1	1765	3.4	1398	2.6	-20.8%
Area 4 Total	6913	12.6	7429	14.2	6979	12.9	-6.1%
Anne Arundel	5200	9.5	5487	10.5	5423	10.0	-1.2%
Calvert	645	1.2	868	1.7	934	1.7	7.6%
Charles	1829	3.3	1614	3.1	1498	2.8	-7.2%
Prince George's	5418	9.9	4914	9.4	4120	7.6	-16.2%
St. Mary's	1111	2.0	1070	2.0	997	1.8	-6.8%
Area 5 Total	14203	25.9	13953	26.6	12972	23.9	-7.0%
Out of State	44	0.1	48	0.1	55	0.1	14.6%
State Total	54848	100.0	52441	100.0	54242	100.0	3.4%

Table 2
Manner of Handling Referrals at Intake by Jurisdiction and by Area
FY 2002

Area	Formal Petition	Percent Formal Petition	90 days Pre Court Supervision	Percent 90 days Pre Court Supervision	Resolved at Intake	Percent Resolved at Intake	No Jurisdiction	Percent No Jurisdiction	Decision not Recorded	Percent Decision not Recorded	Juris. Total	Percent of Cases
Baltimore City	8033	66.6	1791	14.9	1679	13.9	244	2.0	308	2.6	12055	100.0
Area 1 Total	8033	66.6	1791	14.9	1679	13.9	244	2.0	308	2.6	12055	100.0
Baltimore	3815	51.5	1535	20.7	1958	26.4	76	1.0	24	0.3	7408	100.0
Carroll	542	41.1	450	34.1	289	21.9	32	2.4	7	0.5	1320	100.0
Harford	761	35.0	779	35.8	568	26.1	63	2.9	2	0.1	2173	100.0
Howard	631	31.0	710	34.8	434	21.3	233	11.4	30	1.5	2038	100.0
Area 2 Total	5749	44.4	3474	26.8	3249	25.1	404	3.1	63	0.5	12939	100.0
Allegany	255	25.3	473	46.9	237	23.5	44	4.4	0	0.0	1009	100.0
Frederick	878	39.3	1040	46.6	221	9.9	93	4.2	2	0.1	2234	100.0
Garrett	78	30.7	70	27.6	93	36.6	13	5.1	0	0.0	254	100.0
Montgomery	1697	40.4	1217	29.0	1281	30.5	6	0.1	1	0.0	4202	100.0
Washington	585	37.9	613	39.7	307	19.9	17	1.1	21	1.4	1543	100.0
Area 3 Total	3493	37.8	3413	36.9	2139	23.1	173	1.9	24	0.3	9242	100.0
Caroline	124	21.7	176	30.8	208	36.4	60	10.5	3	0.5	571	100.0
Cecil	452	39.9	439	38.7	164	14.5	65	5.7	14	1.2	1134	100.0
Dorchester	139	21.8	213	33.4	247	38.7	37	5.8	2	0.3	638	100.0
Kent	88	26.0	45	13.3	182	53.8	23	6.8	0	0.0	338	100.0
Queen Anne's	89	17.7	121	24.1	255	50.7	35	7.0	3	0.6	503	100.0
Somerset	59	21.9	112	41.6	81	30.1	17	6.3	0	0.0	269	100.0
Talbot	166	34.5	147	30.6	140	29.1	26	5.4	2	0.4	481	100.0
Wicomico	342	20.8	675	41.0	565	34.3	48	2.9	17	1.0	1647	100.0
Worcester	212	15.2	651	46.6	425	30.4	92	6.6	18	1.3	1398	100.0
Area 4 Total	1671	23.9	2579	37.0	2267	32.5	403	5.8	59	0.8	6979	100.0
Anne Arundel	1580	29.1	1956	36.1	1806	33.3	77	1.4	4	0.1	5423	100.0
Calvert	386	41.3	221	23.7	304	32.5	16	1.7	7	0.7	934	100.0
Charles	401	26.8	830	55.4	253	16.9	14	0.9	0	0.0	1498	100.0
Prince George's	1338	32.5	1289	31.3	1385	33.6	40	1.0	68	1.7	4120	100.0
St. Mary's	334	33.5	381	38.2	281	28.2	1	0.1	0	0.0	997	100.0
Area 5 Total	4039	31.1	4677	36.1	4029	31.1	148	1.1	79	0.6	12972	100.0
Out of State	41	74.5	2	3.6	12	21.8	0	0.0	0	0.0	55	100.0
Out of State Total	41	74.5	2	3.6	12	21.8	0	0.0	0	0.0	55	100.0
State Total	23026	42.5	15936	29.4	13375	24.7	1372	2.5	533	1.0	54242	100.0

Table 3
Rank Order of Formal Cases by County of Jurisdiction
FY 2002

Jurisdiction Area	Formal	Percent Formal Cases
Baltimore City	8033	66.6
Baltimore County	3815	51.5
Calvert	386	41.3
Carroll	542	41.1
Montgomery	1697	40.4
Cecil	452	39.9
Frederick	878	39.3
Washington	585	37.9
Harford	761	35.0
Talbot	166	34.5
St. Mary's	334	33.5
Prince George's	1338	32.5
Howard	631	31.0
Garrett	78	30.7
Anne Arundel	1580	29.1
Charles	401	26.8
Kent	88	26.0
Allegany	255	25.3
Somerset	59	21.9
Dorchester	139	21.8
Caroline	124	21.7
Wicomico	342	20.8
Queen Anne's	89	17.7
Worcester	212	15.2
Out of State	41	74.5

Table 4
Number and Percent of Total Intake Cases by Race
FY 2002

Manner of Handling Cases	African American	Percent African American	Caucasian	Percent Caucasian	Other	Percent Other	Total	Percent Total
Formal Petitions	14024	51.0	8322	33.2	680	41.0	23026	42.5
90 days Pre Court Supervision	6021	21.9	9416	37.5	499	30.1	15936	29.4
Resolved at Intake	7052	25.7	7226	28.8	469	28.3	14747	27.2
Decision not Recorded	386	1.4	137	0.5	10	0.6	533	1.0
Total	27483	100.0	25101	100.0	1658	100.0	54242	100.0

Table 5
Intake Cases by Race and by County of Jurisdiction
FY 2002

Area	African American	Percent African American	Caucasian	Percent Caucasian	Other	Percent Other	Jurisdiction Total
Baltimore City	11034	40.1	891	3.5	130	7.8	12055
Area 1 Total	11034	40.1	891	3.5	130	7.8	12055
Baltimore	3576	13.0	3741	14.9	91	5.5	7408
Carroll	90	0.3	1212	4.8	18	1.1	1320
Harford	557	2.0	1580	6.3	36	2.2	2173
Howard	792	2.9	1161	4.6	85	5.1	2038
Area 2 Total	5015	18.2	7694	30.7	230	13.9	12939
Allegany	94	0.3	894	3.6	21	1.3	1009
Frederick	498	1.8	1643	6.5	93	5.6	2234
Garrett	11	0.0	240	1.0	3	0.2	254
Montgomery	1850	6.7	1660	6.6	692	41.7	4202
Washington	238	0.9	1264	5.0	41	2.5	1543
Area 3 Total	2691	9.8	5701	22.7	850	51.3	9242
Caroline	132	0.5	431	1.7	8	0.5	571
Cecil	69	0.3	1048	4.2	17	1.0	1134
Dorchester	400	1.5	227	0.9	11	0.7	638
Kent	138	0.5	195	0.8	5	0.3	338
Queen Anne's	99	0.4	397	1.6	7	0.4	503
Somerset	159	0.6	109	0.4	1	0.1	269
Talbot	178	0.6	284	1.1	19	1.1	481
Wicomico	872	3.2	751	3.0	24	1.4	1647
Worcester	220	0.8	1152	4.6	26	1.6	1398
Area 4 Total	2267	8.2	4594	18.3	118	7.1	6979
Anne Arundel	1891	6.9	3437	13.7	95	5.7	5423
Calvert	187	0.7	723	2.9	24	1.4	934
Charles	679	2.5	800	3.2	19	1.1	1498
Prince George's	3444	12.5	498	2.0	178	10.7	4120
St. Mary's	257	0.9	730	2.9	10	0.6	997
Area 5 Total	6458	23.5	6188	24.7	326	19.7	12972
Out of State	18	0.1	33	0.1	4	0.2	55
Out of State Total	18	0.1	33	0.1	4	0.2	55
State Total	27483	100.0	25101	100.0	1658	100.0	54242

**Table 6
Manner of Handling Intake Cases by Race and County of Jurisdiction
FY 2002**

Area	African American					Caucasian				
	Formal	Informal	Resolved At Intake	Decision Not Recorded	Total	Formal	Informal	Resolved At Intake	Decision Not Recorded	Total
Baltimore City	7402	1616	1724	292	11034	546	156	173	16	891
Area 1 Total	7402	1616	1724	292	11034	546	156	173	16	891
Baltimore	1925	601	1040	10	3576	1850	920	957	14	3741
Carroll	51	20	19	0	90	483	424	298	7	1212
Harford	265	149	143	0	557	482	619	479	0	1580
Howard	317	196	270	9	792	291	483	368	19	1161
Area 2 Total	2558	966	1472	19	5015	3106	2446	2102	40	7694
Allegany	44	23	27	0	94	205	442	247	0	894
Frederick	268	147	83	0	498	568	852	221	2	1643
Garrett	8	0	3	0	11	69	70	101	0	240
Montgomery	835	414	600	1	1850	561	590	509	0	1660
Washington	87	93	55	3	238	487	505	254	18	1264
Area 3 Total	1242	677	768	4	2691	1890	2459	1332	20	5701
Caroline	42	31	59	0	132	82	141	205	3	431
Cecil	26	29	13	1	69	416	404	215	13	1048
Dorchester	111	106	181	2	400	27	105	95	0	227
Kent	44	15	79	0	138	44	28	123	0	195
Queen Anne`s	19	19	61	0	99	69	99	226	3	397
Somerset	35	61	63	0	159	24	51	34	0	109
Talbot	69	47	62	0	178	95	97	90	2	284
Wicomico	224	272	369	7	872	111	396	236	8	751
Worcester	79	56	82	3	220	131	586	421	14	1152
Area 4 Total	649	636	969	13	2267	999	1907	1645	43	4594
Anne Arundel	618	577	695	1	1891	929	1340	1165	3	3437
Calvert	74	40	70	3	187	301	176	242	4	723
Charles	225	395	59	0	679	169	427	204	0	800
Prince George`s	1165	1016	1209	54	3444	103	227	157	11	498
St. Mary`s	78	98	81	0	257	254	277	199	0	730
Area 5 Total	2160	2126	2114	58	6458	1756	2447	1967	18	6188
Out of State	13	0	5	0	18	25	1	7	0	33
Out of State Total	13	0	5	0	18	25	1	7	0	33
Total	14024	6021	7052	386	27483	8322	9416	7226	137	25101

Table 6
Manner of Handling Intake Cases by Race and County of Jurisdiction
FY 2002

Area	Other				Total	Jurisdiction Total
	Formal	Informal	Resolved At Intake	Decision Not Recorded		
Baltimore City	85	19	26	0	130	12055
Area 1 Total	85	19	26	0	130	12055
Baltimore	40	14	37	0	91	7408
Carroll	8	6	4	0	18	1320
Harford	14	11	9	2	36	2173
Howard	23	31	29	2	85	2038
Area 2 Total	85	62	79	4	230	12939
Allegany	6	8	7	0	21	1009
Frederick	42	41	10	0	93	2234
Garrett	1	0	2	0	3	254
Montgomery	301	213	178	0	692	4202
Washington	11	15	15	0	41	1543
Area 3 Total	361	277	212	0	850	9242
Caroline	0	4	4	0	8	571
Cecil	10	6	1	0	17	1134
Dorchester	1	2	8	0	11	638
Kent	0	2	3	0	5	338
Queen Anne`s	1	3	3	0	7	503
Somerset	0	0	1	0	1	269
Talbot	2	3	14	0	19	481
Wicomico	7	7	8	2	24	1647
Worcester	2	9	14	1	26	1398
Area 4 Total	23	36	56	3	118	6979
Anne Arundel	33	39	23	0	95	5423
Calvert	11	5	8	0	24	934
Charles	7	8	4	0	19	1498
Prince George`s	70	46	59	3	178	4120
St. Mary`s	2	6	2	0	10	997
Area 5 Total	123	104	96	3	326	12972
Out of State	3	1	0	0	4	55
Out of State Total	3	1	0	0	4	55
Total	680	499	469	10	1658	54242

**Table 7
Number and Percent of Total Intake Cases by Gender
FY 2002**

Manner of Handling Cases	Male	Percent Male	Female	Percent Female	Total
Formal Petitions	18999	46.4%	4027	30.3%	23026
90 days Pre Court Supervision	11471	28.0%	4465	33.5%	15936
Resolved at Intake	10090	24.7%	4657	35.0%	14747
Decision Not Recorded	373	0.9%	160	1.2%	533
State Total	40933	100.0%	13309	100.0%	54242

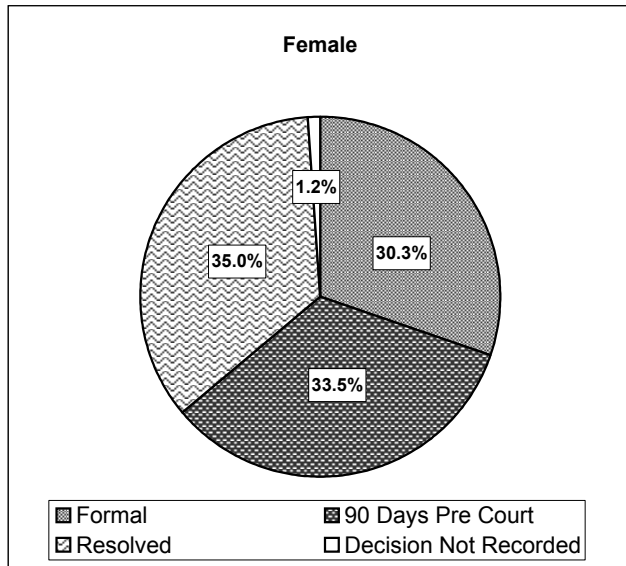
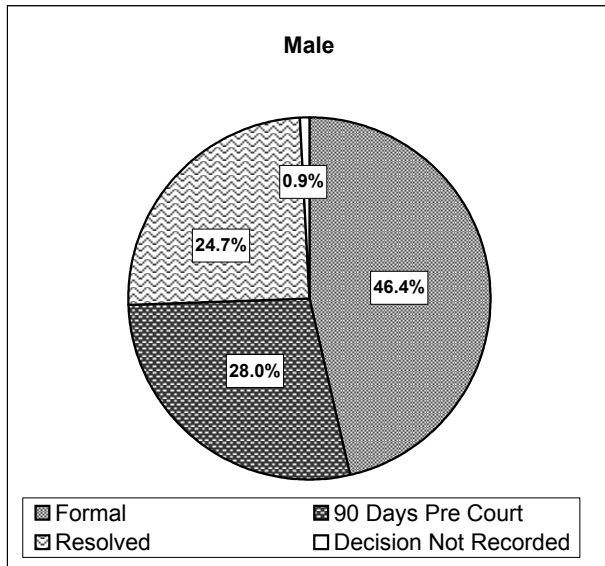


Table 8
Manner of Handling Intake Cases by Gender and County of Jurisdiction
FY 2002

Area	Male						Female						Jurisdiction Total
	Formal	Informal	Resolved At Intake	Decision Not Recorded	Total	Percent Total	Formal	Informal	Resolved At Intake	Decision Not Recorded	Total	Percent Total	
Baltimore City	6875	1366	1409	230	9880	82.0	1158	425	514	78	2175	18.0	12055
Area 1 Total	6875	1366	1409	230	9880	82.0	1158	425	514	78	2175	18.0	12055
Baltimore	2875	1055	1407	20	5357	72.3	940	480	627	4	2051	27.7	7408
Carroll	437	326	217	3	983	74.5	105	124	104	4	337	25.5	1320
Harford	621	530	438	1	1590	73.2	140	249	193	1	583	26.8	2173
Howard	485	518	468	23	1494	73.3	146	192	199	7	544	26.7	2038
Area 2 Total	4418	2429	2530	47	9424	72.8	1331	1045	1123	16	3515	27.2	12939
Allegany	198	301	155	0	654	64.8	57	172	126	0	355	35.2	1009
Frederick	683	705	189	1	1578	70.6	195	335	125	1	656	29.4	2234
Garrett	64	53	83	0	200	78.7	14	17	23	0	54	21.3	254
Montgomery	1492	942	906	0	3340	79.5	205	275	381	1	862	20.5	4202
Washington	513	432	206	7	1158	75.0	72	181	118	14	385	25.0	1543
Area 3 Total	2950	2433	1539	8	6930	75.0	543	980	773	16	2312	25.0	9242
Caroline	111	118	149	1	379	66.4	13	58	119	2	192	33.6	571
Cecil	377	312	154	7	850	75.0	75	127	75	7	284	25.0	1134
Dorchester	117	157	151	0	425	66.6	22	56	133	2	213	33.4	638
Kent	71	29	148	0	248	73.4	17	16	57	0	90	26.6	338
Queen Anne's	69	94	191	2	356	70.8	20	27	99	1	147	29.2	503
Somerset	50	86	70	0	206	76.6	9	26	28	0	63	23.4	269
Talbot	116	111	118	1	346	71.9	50	36	48	1	135	28.1	481
Wicomico	286	495	405	10	1196	72.6	56	180	208	7	451	27.4	1647
Worcester	182	474	363	14	1033	73.9	30	177	154	4	365	26.1	1398
Area 4 Total	1379	1876	1749	35	5039	72.2	292	703	921	24	1940	27.8	6979
Anne Arundel	1287	1403	1311	2	4003	73.8	293	553	572	2	1420	26.2	5423
Calvert	299	167	192	5	663	71.0	87	54	128	2	271	29.0	934
Charles	309	529	183	0	1021	68.2	92	301	84	0	477	31.8	1498
Prince George's	1168	1002	1018	46	3234	78.5	170	287	407	22	886	21.5	4120
St. Mary's	280	265	150	0	695	69.7	54	116	132	0	302	30.3	997
Area 5 Total	3343	3366	2854	53	9616	74.1	696	1311	1323	26	3356	25.9	12972
Out of State	34	1	9	0	44	80.0	7	1	3	0	11	20.0	55
Out of State Total	34	1	9	0	44	80.0	7	1	3	0	11	20.0	55
Total	18999	11471	10090	373	40933	75.5	4027	4465	4657	160	13309	24.5	54242

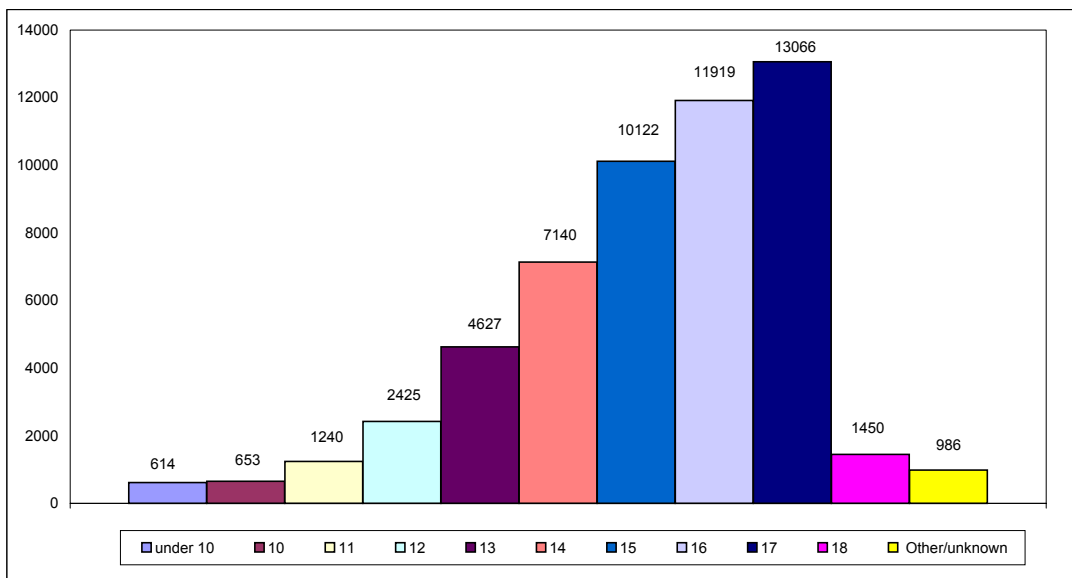
**Table 9
Intake Cases by Race, Gender, and County of Jurisdiction
FY 2002**

Area	African American					Caucasian					Other					Jurisdiction Total
	Male	Percent Total	Female	Percent Total	A. A. Total	Male	Percent Total	Female	Percent Total	Caucasian Total	Male	Percent Total	Female	Percent Total	Other Total	
Baltimore City	9177	42.8	1857	30.8	11034	617	3.4	274	4.0	891	86	6.7	44	11.6	130	12055
Area 1 Total	9177	42.8	1857	30.8	11034	617	3.4	274	4.0	891	86	6.7	44	11.6	130	12055
Baltimore	2526	11.8	1050	17.4	3576	2765	15.2	976	14.1	3741	66	5.2	25	6.6	91	7408
Carroll	77	0.4	13	0.2	90	892	4.9	320	4.6	1212	14	1.1	4	1.1	18	1320
Harford	409	1.9	148	2.5	557	1159	6.4	421	6.1	1580	22	1.7	14	3.7	36	2173
Howard	576	2.7	216	3.6	792	850	4.7	311	4.5	1161	68	5.3	17	4.5	85	2038
Area 2 Total	3588	16.7	1427	23.7	5015	5666	31.1	2028	29.4	7694	170	13.3	60	15.9	230	12939
Allegany	71	0.3	23	0.4	94	567	3.1	327	4.7	894	16	1.3	5	1.3	21	1009
Frederick	374	1.7	124	2.1	498	1135	6.2	508	7.4	1643	69	5.4	24	6.3	93	2234
Garrett	11	0.1	0	0.0	11	188	1.0	52	0.8	240	1	0.1	2	0.5	3	254
Montgomery	1488	6.9	362	6.0	1850	1290	7.1	370	5.4	1660	562	43.9	130	34.4	692	4202
Washington	185	0.9	53	0.9	238	944	5.2	320	4.6	1264	29	2.3	12	3.2	41	1543
Area 3 Total	2129	9.9	562	9.3	2691	4124	22.7	1577	22.9	5701	677	52.9	173	45.8	850	9242
Caroline	88	0.4	44	0.7	132	287	1.6	144	2.1	431	4	0.3	4	1.1	8	571
Cecil	46	0.2	23	0.4	69	789	4.3	259	3.8	1048	15	1.2	2	0.5	17	1134
Dorchester	255	1.2	145	2.4	400	164	0.9	63	0.9	227	6	0.5	5	1.3	11	638
Kent	101	0.5	37	0.6	138	143	0.8	52	0.8	195	4	0.3	1	0.3	5	338
Queen Anne's	65	0.3	34	0.6	99	284	1.6	113	1.6	397	7	0.5	0	0.0	7	503
Somerset	116	0.5	43	0.7	159	89	0.5	20	0.3	109	1	0.1	0	0.0	1	269
Talbot	133	0.6	45	0.7	178	199	1.1	85	1.2	284	14	1.1	5	1.3	19	481
Wicomico	675	3.1	197	3.3	872	504	2.8	247	3.6	751	17	1.3	7	1.9	24	1647
Worcester	162	0.8	58	1.0	220	849	4.7	303	4.4	1152	22	1.7	4	1.1	26	1398
Area 4 Total	1641	7.6	626	10.4	2267	3308	18.2	1286	18.6	4594	90	7.0	28	7.4	118	6979
Anne Arundel	1407	6.6	484	8.0	1891	2523	13.9	914	13.2	3437	73	5.7	22	5.8	95	5423
Calvert	141	0.7	46	0.8	187	501	2.8	222	3.2	723	21	1.6	3	0.8	24	934
Charles	476	2.2	203	3.4	679	531	2.9	269	3.9	800	14	1.1	5	1.3	19	1498
Prince George's	2694	12.6	750	12.4	3444	401	2.2	97	1.4	498	139	10.9	39	10.3	178	4120
St. Mary's	185	0.9	72	1.2	257	503	2.8	227	3.3	730	7	0.5	3	0.8	10	997
Area 5 Total	4903	22.9	1555	25.8	6458	4459	24.5	1729	25.1	6188	254	19.8	72	19.0	326	12972
Out of State	15	0.1	3	0.0	18	26	0.1	7	0.1	33	3	0.2	1	0.3	4	55
Out of State Total	15	0.1	3	0.0	18	26	0.1	7	0.1	33	3	0.2	1	0.3	4	55
Grand Total	21453	100.0	6030	100.0	27483	18200	100.0	6901	100.0	25101	1280	100.0	378	100.0	1658	54242

Table 10
Number and Percent of Total Intake Cases by Age
FY 2002

Age of Youth	2000 Cases	Percent Cases	2001 Cases	Percent Cases	2002 Cases	Percent Cases	% Change '01 to '02
Under 10	1188	2.2	729	1.4	614	1.1	-15.8
Ten	750	1.4	697	1.3	653	1.2	-6.3
Eleven	1475	2.7	1306	2.5	1240	2.3	-5.1
Twelve	2716	5.0	2562	4.9	2425	4.5	-5.3
Thirteen	4549	8.3	4318	8.2	4627	8.5	7.2
Fourteen	7423	13.5	7066	13.5	7140	13.2	1.0
Fifteen	10013	18.3	9969	19.0	10122	18.7	1.5
Sixteen	11622	21.2	11090	21.1	11919	22.0	7.5
Seventeen	13193	24.1	12587	24.0	13066	24.1	3.8
Eighteen	1373	2.5	1638	3.1	1450	2.7	-11.5
Other/Unknown	546	1.0	479	0.9	986	1.8	105.8
State Total	54848	100.0	52441	100.0	54242	100.0	3.4

Total Intake Cases by Age
FY 2002



**Table 11
Intake Cases by Age and County of Jurisdiction
FY 2002**

Area	Under 10	10	11	12	13	14	15	16	17	18	Over 18	Age Unknown	Total
Baltimore City	99	149	233	531	1092	1724	2379	2674	2668	227	15	264	12055
Area 1 Total	99	149	233	531	1092	1724	2379	2674	2668	227	15	264	12055
Baltimore	89	106	192	433	727	1141	1485	1491	1483	162	9	90	7408
Carroll	15	12	28	61	88	158	219	311	374	24	4	26	1320
Harford	23	15	46	103	167	244	373	463	587	117	3	32	2173
Howard	19	20	34	73	114	242	367	508	582	53	1	25	2038
Area 2 Total	146	153	300	670	1096	1785	2444	2773	3026	356	17	173	12939
Allegany	9	5	12	32	65	116	206	239	305	7	1	12	1009
Frederick	23	21	51	80	204	311	407	500	562	52	2	21	2234
Garrett	1	3	5	8	26	36	39	57	65	10	0	4	254
Montgomery	27	25	59	147	277	441	760	998	1118	284	5	61	4202
Washington	13	18	34	59	139	199	284	349	379	28	2	39	1543
Area 3 Total	73	72	161	326	711	1103	1696	2143	2429	381	10	137	9242
Caroline	11	7	11	33	47	69	124	153	103	6	0	7	571
Cecil	17	16	37	57	107	195	182	199	288	17	0	19	1134
Dorchester	15	13	20	30	61	82	132	145	121	2	1	16	638
Kent	10	6	15	24	38	31	65	77	66	1	0	5	338
Queen Anne's	10	9	14	11	36	76	83	100	148	4	0	12	503
Somerset	14	5	15	13	24	32	52	49	54	5	0	6	269
Talbot	10	12	13	30	32	55	82	98	132	9	0	8	481
Wicomico	22	22	52	95	219	221	303	322	339	26	0	26	1647
Worcester	6		8	12	34	94	162	337	659	62	1	23	1398
Area 4 Total	115	90	185	305	598	855	1185	1480	1910	132	2	122	6979
Anne Arundel	77	85	179	283	535	778	950	1143	1224	90	6	73	5423
Calvert	13	14	29	37	69	94	169	236	233	18	1	21	934
Charles	25	26	40	53	134	171	277	346	384	23	1	18	1498
Prince George's	50	44	82	140	283	527	869	879	929	144	5	168	4120
St. Mary's	16	20	31	79	108	97	142	228	249	18	0	9	997
Area 5 Total	181	189	361	592	1129	1667	2407	2832	3019	293	13	289	12972
Out of State	0	0	0	1	1	6	11	17	14	4	0	1	55
Out of State Total	0	0	0	1	1	6	11	17	14	4	0	1	55
Total	614	653	1240	2425	4627	7140	10122	11919	13066	1393	57	986	54242

Table 12
Intake Cases by Age and County of Jurisdiction for African American Youth
FY 2002

Area	Under 10	10	11	12	13	14	15	16	17	18	Over 18	Age Unknown	Total
Baltimore City	86	131	211	479	999	1583	2167	2477	2448	205	15	233	11034
Area 1 Total	86	131	211	479	999	1583	2167	2477	2448	205	15	233	11034
Baltimore	43	65	116	265	407	627	700	651	603	60	1	38	3576
Carroll	3	1	1	4	4	7	13	31	25	1	0	0	90
Harford	9	10	20	36	46	78	65	114	132	41	1	5	557
Howard	9	7	19	45	70	147	124	171	166	21	0	13	792
Area 2 Total	64	83	156	350	527	859	902	967	926	123	2	56	5015
Allegany	1	0	0	2	9	9	24	24	23	1	0	1	94
Frederick	11	12	18	18	51	68	87	114	103	10	1	5	498
Garrett	0	0	0	0	0	3	1	4	3	0	0	0	11
Montgomery	18	18	43	84	150	245	354	424	408	85	1	20	1850
Washington	5	4	7	16	33	30	41	49	40	5	0	8	238
Area 3 Total	35	34	68	120	243	355	507	615	577	101	2	34	2691
Caroline	2	2	2	6	14	21	28	22	29	3	0	3	132
Cecil	4	2	4	4	10	18	4	7	14	1	0	1	69
Dorchester	13	11	16	17	43	60	99	83	45	2	0	11	400
Kent	6	3	11	15	27	5	28	19	22	1	0	1	138
Queen Anne's	1	4	5	3	15	15	19	8	26	0	0	3	99
Somerset	12	3	12	7	17	24	33	22	23	3	0	3	159
Talbot	7	8	8	14	24	30	27	19	31	6	0	4	178
Wicomico	14	13	36	68	161	123	171	142	128	7	0	9	872
Worcester	4	0	4	4	12	31	36	51	67	6	0	5	220
Area 4 Total	63	46	98	138	323	327	445	373	385	29	0	40	2267
Anne Arundel	41	35	90	128	235	291	321	331	367	26	1	25	1891
Calvert	4	4	9	12	16	20	43	42	27	4	0	6	187
Charles	15	18	26	29	72	68	132	157	144	12	0	6	679
Prince George's	45	41	75	129	238	450	739	725	750	114	3	135	3444
St. Mary's	7	6	18	21	31	34	32	48	53	5	0	2	257
Area 5 Total	112	104	218	319	592	863	1267	1303	1341	161	4	174	6458
Out of State	0	0	0	0	1	3	4	5	3	2	0	0	18
Out of State Total	0	0	0	0	1	3	4	5	3	2	0	0	18
Total	360	398	751	1406	2685	3990	5292	5740	5680	621	23	537	27483

Table 13
Intake Cases by Age and County of Jurisdiction for Caucasian Youth
FY 2002

Area	Under 10	10	11	12	13	14	15	16	17	18	Over 18	Age Unknown	Total
Baltimore City	7	12	21	41	76	123	188	175	204	21	0	23	891
Area 1 Total	7	12	21	41	76	123	188	175	204	21	0	23	891
Baltimore	46	40	72	164	312	504	774	819	852	99	8	51	3741
Carroll	11	11	27	57	84	147	201	275	348	22	4	25	1212
Harford	14	5	26	66	118	160	300	338	451	75	2	25	1580
Howard	10	7	11	26	42	92	224	306	399	32	1	11	1161
Area 2 Total	81	63	136	313	556	903	1499	1738	2050	228	15	112	7694
Allegany	8	5	12	29	54	104	178	211	275	6	1	11	894
Frederick	11	8	31	59	145	223	309	360	442	39	1	15	1643
Garrett	1	3	5	8	26	33	38	53	60	10	0	3	240
Montgomery	7	6	9	52	70	140	290	371	534	148	1	32	1660
Washington	8	14	24	39	98	157	241	293	335	23	2	30	1264
Area 3 Total	35	36	81	187	393	657	1056	1288	1646	226	5	91	5701
Caroline	9	4	8	26	33	46	96	131	71	3	0	4	431
Cecil	13	14	33	53	96	173	177	184	272	16	0	17	1048
Dorchester	2	2	4	11	18	21	31	58	75	0	1	4	227
Kent	4	3	4	9	10	26	36	56	43	0	0	4	195
Queen Anne's	7	4	8	8	21	61	62	92	121	4	0	9	397
Somerset	2	2	3	6	7	8	19	26	31	2	0	3	109
Talbot	3	4	5	16	7	24	55	73	91	2	0	4	284
Wicomico	8	8	14	26	54	96	130	174	206	19	0	16	751
Worcester	2	0	4	8	22	62	124	279	576	56	1	18	1152
Area 4 Total	50	41	83	163	268	517	730	1073	1486	102	2	79	4594
Anne Arundel	34	50	85	149	284	472	615	800	836	61	5	46	3437
Calvert	8	10	20	25	52	73	123	185	197	14	1	15	723
Charles	10	8	14	24	62	102	144	180	233	11	0	12	800
Prince George's	5	2	6	8	29	57	95	111	140	24	2	19	498
St. Mary's	8	14	13	57	75	61	110	180	192	13	0	7	730
Area 5 Total	65	84	138	263	502	765	1087	1456	1598	123	8	99	6188
Out of State	0	0	0	1	0	3	6	11	10	2	0	0	33
Out of State Total	0	0	0	1	0	3	6	11	10	2	0	0	33
Total	238	236	459	968	1795	2968	4566	5741	6994	702	30	404	25101

Table 14
Intake Cases by Age and County of Jurisdiction for Other Youth
FY 2002

Area	Under 10	10	11	12	13	14	15	16	17	18	Over 18	Age Unknown	Total
Baltimore City	6	6	1	11	17	18	24	22	16	1	0	8	130
Area 1 Total	6	6	1	11	17	18	24	22	16	1	0	8	130
Baltimore	0	1	4	4	8	10	11	21	28	3	0	1	91
Carroll	1	0	0	0	0	4	5	5	1	1	0	1	18
Harford	0	0	0	1	3	6	8	11	4	1	0	2	36
Howard	0	6	4	2	2	3	19	31	17	0	0	1	85
Area 2 Total	1	7	8	7	13	23	43	68	50	5	0	5	230
Allegany	0	0	0	1	2	3	4	4	7	0	0	0	21
Frederick	1	1	2	3	8	20	11	26	17	3	0	1	93
Garrett	0	0	0	0	0	0	0	0	2	0	0	1	3
Montgomery	2	1	7	11	57	56	116	203	176	51	3	9	692
Washington	0	0	3	4	8	12	2	7	4	0	0	1	41
Area 3 Total	3	2	12	19	75	91	133	240	206	54	3	12	850
Caroline	0	1	1	1	0	2	0	0	3	0	0	0	8
Cecil	0	0	0	0	1	4	1	8	2	0	0	1	17
Dorchester	0	0	0	2	0	1	2	4	1	0	0	1	11
Kent	0	0	0	0	1	0	1	2	1	0	0	0	5
Queen Anne's	2	1	1	0	0	0	2	0	1	0	0	0	7
Somerset	0	0	0	0	0	0	0	1	0	0	0	0	1
Talbot	0	0	0	0	1	1	0	6	10	1	0	0	19
Wicomico	0	1	2	1	4	2	2	6	5	0	0	1	24
Worcester	0	0	0	0	0	1	2	7	16	0	0	0	26
Area 4 Total	2	3	4	4	7	11	10	34	39	1	0	3	118
Anne Arundel	2	0	4	6	16	15	14	12	21	3	0	2	95
Calvert	1	0	0	0	1	1	3	9	9	0	0	0	24
Charles	0	0	0	0	0	1	1	9	7	0	1	0	19
Prince George's	0	1	1	3	16	20	35	43	39	6	0	14	178
St. Mary's	1	0	0	1	2	2	0	0	4	0	0	0	10
Area 5 Total	4	1	5	10	35	39	53	73	80	9	1	16	326
Out of State	0	0	0	0	0	0	1	1	1	0	0	1	4
Out of State Total	0	0	0	0	0	0	1	1	1	0	0	1	4
Total	16	19	30	51	147	182	264	438	392	70	4	45	1658

**Table 15
Intake Cases by Age and County of Jurisdiction for Males
FY 2002**

Area	< 10	10	11	12	13	14	15	16	17	18	> 18	Age Unknown	Male Total
Baltimore City	82	114	181	390	825	1350	1963	2287	2306	194	12	176	9880
Area 1 Total	82	114	181	390	825	1350	1963	2287	2306	194	12	176	9880
Baltimore	79	85	151	321	503	753	1046	1078	1123	140	6	72	5357
Carroll	13	10	22	51	53	110	151	244	291	20	2	16	983
Harford	22	13	33	67	122	154	244	336	466	106	1	26	1590
Howard	14	20	29	48	85	177	274	360	432	36	1	18	1494
Area 2 Total	128	128	235	487	763	1194	1715	2018	2312	302	10	132	9424
Allegany	8	3	9	23	37	64	120	164	213	4	1	8	654
Frederick	20	19	39	59	139	195	269	359	420	43	2	14	1578
Garrett	1	3	4	8	21	26	25	51	49	9	0	3	200
Montgomery	22	23	42	117	219	337	563	798	933	235	4	47	3340
Washington	10	13	26	36	103	127	213	277	316	20	2	15	1158
Area 3 Total	61	61	120	243	519	749	1190	1649	1931	311	9	87	6930
Caroline	9	5	6	16	32	42	77	108	76	4	0	4	379
Cecil	14	14	32	43	78	145	123	149	227	15	0	10	850
Dorchester	15	9	15	21	36	47	85	104	82	2	1	8	425
Kent	10	6	13	18	31	16	45	61	42	1	0	5	248
Queen Anne's	8	8	12	9	24	47	49	70	118	3	0	8	356
Somerset	13	3	13	8	18	19	43	42	37	5	0	5	206
Talbot	10	12	12	24	27	28	56	69	97	6	0	5	346
Wicomico	18	15	46	73	149	156	222	232	251	16	0	18	1196
Worcester	4	0	8	7	29	70	116	254	481	47	1	16	1033
Area 4 Total	101	72	157	219	424	570	816	1089	1411	99	2	79	5039
Anne Arundel	66	71	134	206	379	545	687	825	959	74	6	51	4003
Calvert	11	12	21	29	54	49	106	170	181	13	1	16	663
Charles	17	19	26	36	91	109	180	234	279	17	1	12	1021
Prince George's	43	39	69	106	214	410	674	699	768	113	5	94	3234
St. Mary's	16	17	15	71	85	69	91	143	168	15	0	5	695
Area 5 Total	153	158	265	448	823	1182	1738	2071	2355	232	13	178	9616
Out of State	0	0	0	1	1	4	11	15	9	3	0	0	44
Out of State Total	0	0	0	1	1	4	11	15	9	3	0	0	44
Total	525	533	958	1788	3355	5049	7433	9129	10324	1141	46	652	40933

**Table 16
Intake Cases by Age and County of Jurisdiction for Females
FY 2002**

Area	< 10	10	11	12	13	14	15	16	17	18	> 18	Age Unknown	Female Total
Baltimore City	17	35	52	141	267	374	416	387	362	33	3	88	2175
Area 1 Total	17	35	52	141	267	374	416	387	362	33	3	88	2175
Baltimore	10	21	41	112	224	388	439	413	360	22	3	18	2051
Carroll	2	2	6	10	35	48	68	67	83	4	2	10	337
Harford	1	2	13	36	45	90	129	127	121	11	2	6	583
Howard	5	0	5	25	29	65	93	148	150	17	0	7	544
Area 2 Total	18	25	65	183	333	591	729	755	714	54	7	41	3515
Allegany	1	2	3	9	28	52	86	75	92	3	0	4	355
Frederick	3	2	12	21	65	116	138	141	142	9	0	7	656
Garrett	0	0	1	0	5	10	14	6	16	1	0	1	54
Montgomery	5	2	17	30	58	104	197	200	185	49	1	14	862
Washington	3	5	8	23	36	72	71	72	63	8	0	24	385
Area 3 Total	12	11	41	83	192	354	506	494	498	70	1	50	2312
Caroline	2	2	5	17	15	27	47	45	27	2	0	3	192
Cecil	3	2	5	14	29	50	59	50	61	2	0	9	284
Dorchester	0	4	5	9	25	35	47	41	39	0	0	8	213
Kent	0	0	2	6	7	15	20	16	24	0	0	0	90
Queen Anne's	2	1	2	2	12	29	34	30	30	1	0	4	147
Somerset	1	2	2	5	6	13	9	7	17	0	0	1	63
Talbot	0	0	1	6	5	27	26	29	35	3	0	3	135
Wicomico	4	7	6	22	70	65	81	90	88	10	0	8	451
Worcester	2	0	0	5	5	24	46	83	178	15	0	7	365
Area 4 Total	14	18	28	86	174	285	369	391	499	33	0	43	1940
Anne Arundel	11	14	45	77	156	233	263	318	265	16	0	22	1420
Calvert	2	2	8	8	15	45	63	66	52	5	0	5	271
Charles	8	7	14	17	43	62	97	112	105	6	0	6	477
Prince George's	7	5	13	34	69	117	195	180	161	31	0	74	886
St. Mary's	0	3	16	8	23	28	51	85	81	3	0	4	302
Area 5 Total	28	31	96	144	306	485	669	761	664	61	0	111	3356
Out of State	0	0	0	0	0	2	0	2	5	1	0	1	11
Out of State Total	0	0	0	0	0	2	0	2	5	1	0	1	11
Total	89	120	282	637	1272	2091	2689	2790	2742	252	11	334	13309

Table 17
Number & Percent of Total Intake Cases by Referral Source
FY 2002

Referral Source	FY 2002	Percent
Police	51069	94.2
Maryland State Agencies	1185	2.2
Citizen	1265	2.3
Parent / Relative	509	0.9
Court	88	0.2
Other	126	0.2
StateTotal	54242	100.0

Table 18
Intake Cases by Referral Source and County of Jurisdiction
FY 2002

Area	Police	Maryland State Agencies	Citizen	Parent / Relative	Court	Other	Jurisdiction Total
Baltimore City	11113	297	505	98	15	27	12055
Area 1 Total	11113	297	505	98	15	27	12055
Baltimore	7270	105	5	7	2	19	7408
Carroll	1093	141	22	59	4	1	1320
Harford	2079	89	0	0	5	0	2173
Howard	2016	11	7	2	1	1	2038
Area 2 Total	12458	346	34	68	12	21	12939
Allegany	956	2	11	35	1	4	1009
Frederick	2003	147	53	27	0	4	2234
Garrett	197	20	7	25	3	2	254
Montgomery	4129	28	0	16	10	19	4202
Washington	1180	24	192	144	3	0	1543
Area 3 Total	8465	221	263	247	17	29	9242
Caroline	554	3	2	0	11	1	571
Cecil	1096	22	12	3	0	1	1134
Dorchester	579	22	36	1	0	0	638
Kent	333	3	0	0	1	1	338
Queen Anne's	487	9	5	1	1	0	503
Somerset	263	5	0	0	1	0	269
Talbot	457	4	7	6	6	1	481
Wicomico	1643	3	0	0	1	0	1647
Worcester	1388	6	0	0	0	4	1398
Area 4 Total	6800	77	62	11	21	8	6979
Anne Arundel	5318	60	36	7	1	1	5423
Calvert	911	0	9	2	5	7	934
Charles	1489	9	0	0	0	0	1498
Prince George's	3493	173	355	76	12	11	4120
St. Mary's	990	2	0	0	5	0	997
Area 5 Total	12201	244	400	85	23	19	12972
Out of State	32	0	1	0	0	22	55
Out of State Total	32	0	1	0	0	22	55
Total	51069	1185	1265	509	88	126	54242

Table 19
Intake Cases - Offense by Offense Type
FY 2000 - FY 2002

Offenses	FY 2000	Percent	FY 2001	Percent	FY 2002	Percent	Percent Change '00 to '02
Person-to-Person Offenses							
aggravated assault	764	1.4	875	1.7	1035	1.9	15.5
child abuse	72	0.1	100	0.2	61	0.1	-63.9
kidnapping	1	0.0	3	0.0	11	0.0	72.7
manslaughter	7	0.0	6	0.0	7	0.0	14.3
murder	28	0.1	29	0.1	47	0.1	38.3
robbery	807	1.5	994	1.9	940	1.7	-5.7
sex offense	441	0.8	556	1.1	614	1.1	9.4
simple assault	10439	19.0	10016	19.1	10207	18.5	1.9
Total Person-to-Person	12559	22.9	12579	24.0	12922	23.4	2.7
Property Offenses							
arson felony/misdemeanor	355	0.6	459	0.9	399	0.7	-15.0
auto theft/unauthorized use	2056	3.7	1804	3.4	2334	4.2	22.7
burglary/breaking & entering	2582	4.7	2636	5.0	2443	4.4	-7.9
carjacking	29	0.1	58	0.1	56	0.1	-3.6
malicious destruction	3723	6.8	3852	7.3	3794	6.9	-1.5
tampering	113	0.2	92	0.2	50	0.1	-84.0
theft/shoplifting	9246	16.9	8294	15.8	8040	14.6	-3.2
trespassing	1298	2.4	1094	2.1	1169	2.1	6.4
Total Property	19402	35.4	18289	34.9	18285	33.2	0.0
Alcohol & Drug Related Offenses							
alcohol violations	3002	5.5	3195	6.1	2892	5.2	-10.5
glue sniffing & other inhalants	9	0.0	11	0.0	10	0.0	-10.0
narcotics distribution	6289	11.5	2478	4.7	3355	6.1	26.1
narcotics possession	2055	3.7	5078	9.7	5213	9.5	2.6
Total - Alcohol & Drug Related	11355	20.7	10762	20.5	11470	20.8	6.2
CINS Offenses							
runaway	600	1.1	671	1.3	637	1.2	-5.3
truancy	325	0.6	444	0.8	204	0.4	-117.6
ungovernable	664	1.2	658	1.3	553	1.0	-19.0
Total - CINS	1589	2.9	1773	3.4	1394	2.5	-27.2
Uncategorized - Offenses							
conspiracy	41	0.1	128	0.2	90	0.2	-42.2
false report	131	0.2	284	0.5	252	0.5	-12.7
hand gun violations	167	0.3	132	0.3	102	0.2	-29.4
harassment	207	0.4	228	0.4	208	0.4	-9.6
loitering	293	0.5	222	0.4	284	0.5	21.8
motor vehicle /traffic violations	1502	2.7	1169	2.2	1460	2.6	19.9
pager at school	14	0.0	30	0.1	6	0.0	-400.0
reckless endangerment	125	0.2	94	0.2	62	0.1	-51.6
telephone misuse	193	0.4	179	0.3	149	0.3	-20.1
tobacco violations	2089	3.8	1865	3.6	1986	3.6	6.1
unspecified felony	149	0.3	225	0.4	265	0.5	15.1
other/misdemeanors	5032	9.2	4482	8.5	4693	8.5	4.5
Total - Uncategorized	9943	18.1	9038	17.2	9557	17.3	5.4
Offenses not Linked	-		-		614 *	0.0	
State Total	54848	100.0	52441	100.0	53628	97.2	2.2

* Note: For 614 Complaints, offenses are not known due to linkage problems in ASSIST.

**Table 20
Intake Cases by Alleged Offenses & County of Jurisdiction
FY 2002**

Area	AGGRAVATED ASSAULT	CHILD ABUSE	GENERAL SEX	KIDNAPPING	MANSLAUGHTER	MURDER	ROBBERY	SEX FELONY	SIMPLE ASSAULT	ARSON FELONY/ MISDEMEANOR	AUTO THEFT/ UNAUTHORIZED USE	BREAKING & ENTERING	CARJACKING	MALICIOUS DESTRUCTION	TAMPERING	THEFT/SHOPLIFTING	TRESPASSING
Baltimore City	599	6	43	2	0	13	391	73	1653	60	1018	441	32	437	2	566	258
Area 1 Total	599	6	43	2	0	13	391	73	1653	60	1018	441	32	437	2	566	258
Baltimore	105	32	38	4	1	20	108	52	1929	50	174	379	9	697	1	1665	212
Carroll	12	2	5	0	0	0	2	10	179	20	17	50	0	106	1	152	24
Harford	14	1	2	0	0	0	33	11	404	2	54	77	0	179	2	379	20
Howard	14	0	16	0	1	0	19	7	418	18	61	104	0	139	4	413	52
Area 2 Total	145	35	61	4	2	20	162	80	2930	90	306	610	9	1121	8	2609	308
Allegany	4	0	4	0	0	0	3	8	154	2	21	30	0	55	4	96	12
Frederick	10	0	4	0	1	0	11	9	363	18	22	72	0	145	2	334	20
Garrett	0	0	0	0	0	0	0	6	29	2	5	18	0	7	0	27	3
Montgomery	43	9	26	0	1	1	78	43	664	44	205	260	2	227	0	769	75
Washington	14	0	5	0	0	0	15	10	247	6	25	41	0	216	3	265	16
Area 3 Total	71	9	39	0	2	1	107	76	1457	72	278	421	2	650	9	1491	126
Caroline	1	0	8	0	0	0	0	4	116	3	17	23	0	82	0	60	10
Cecil	4	3	7	0	0	0	3	7	254	11	36	65	0	85	0	190	20
Dorchester	1	0	1	0	0	0	1	3	157	4	13	15	1	61	1	118	6
Kent	4	0	2	0	0	0	0	2	92	1	3	6	0	27	2	33	2
Queen Anne's	2	0	1	0	0	0	1	4	94	17	13	11	0	45	0	37	6
Somerset	5	1	1	0	0	1	0	2	100	7	4	16	0	12	0	29	5
Talbot	3	0	0	0	0	0	0	4	99	2	4	24	0	41	0	41	20
Wicomico	20	2	7	1	0	0	9	10	442	16	35	56	0	95	0	263	36
Worcester	4	0	3	0	0	0	9	8	71	7	27	35	0	40	0	188	7
Area 4 Total	44	6	30	1	0	1	23	44	1425	68	152	251	1	488	3	959	112
Anne Arundel	58	0	30	1	1	1	74	29	1285	41	70	264	0	538	15	1101	196
Calvert	1	1	3	0	0	1	1	7	157	3	19	90	0	74	0	83	9
Charles	15	1	4	0	0	0	4	14	340	23	92	66	0	105	1	317	18
Prince George's	94	2	23	3	2	10	170	42	787	33	381	226	12	235	12	785	134
St. Mary's	8	1	3	0	0	0	8	9	168	7	16	68	0	146	0	109	8
Area 5 Total	176	5	63	4	3	12	257	101	2737	107	578	714	12	1098	28	2395	365
Out of State	0	0	1	0	0	0	0	3	5	2	2	6	0	0	0	20	0
State Total	1035	61	237	11	7	47	940	377	10207	399	2334	2443	56	3794	50	8040	1169

**Table 20
Intake Cases by Alleged Offenses & County of Jurisdiction
FY 2002**

Area	ALCOHOL VIOLATION	GLUE SNIFFING & OTHER INHALANTS	NARCOTICS DISTRIBUTION	NARCOTICS POSSESSION	RUNAWAY	TRUANCY	UNGOVERNABLE	BOMB THREAT	CONSPIRACY FELONY/MISDEMEANOR	FALSE ALARM	FALSE REPORT	FIREWORKS VIOLATION	HANDGUN VIOLATIONS	HARASSMENT	LOITERING
Baltimore City	84	6	2613	1512	12	77	137	17	25	5	19	10	56	11	265
Area 1 Total	84	6	2613	1512	12	77	137	17	25	5	19	10	56	11	265
Baltimore	186	0	46	675	4	1	5	15	4	6	45	8	11	26	7
Carroll	106	0	19	168	41	3	18	5	8	1	3	5	4	7	0
Harford	91	0	54	220	0	0	0	3	2	2	9	2	2	11	0
Howard	157	0	43	166	13	0	2	5	0	0	7	3	1	10	0
Area 2 Total	540	0	162	1229	58	4	25	28	14	9	64	18	18	54	7
Allegany	180	0	23	79	23	7	40	3	1	0	3	0	0	10	0
Frederick	162	0	44	218	77	31	37	7	4	1	5	5	0	3	0
Garrett	36	0	3	16	7	12	18	0	2	0	1	0	0	3	0
Montgomery	365	0	65	313	4	0	15	20	21	3	23	4	3	2	2
Washington	158	1	33	74	1	0	129	5	1	2	5	3	2	11	0
Area 3 Total	901	1	168	700	112	50	239	35	29	6	37	12	5	29	2
Caroline	43	0	7	32	61	0	0	3	0	0	3	2	1	11	0
Cecil	114	3	9	105	12	1	0	2	7	4	4	3	1	8	0
Dorchester	37	0	13	35	21	0	0	1	0	0	0	1	1	3	0
Kent	9	0	6	29	9	1	0	4	2	0	1	0	0	5	0
Queen Anne's	44	0	6	81	44	1	1	0	0	0	0	3	0	0	0
Somerset	20	0	1	14	12	0	0	4	0	4	0	1	0	3	0
Talbot	74	0	11	45	24	0	3	1	3	1	3	6	0	2	0
Wicomico	128	0	42	96	28	1	0	9	1	1	10	0	1	7	2
Worcester	320	0	23	232	40	4	0	3	1	0	5	2	0	2	0
Area 4 Total	789	3	118	669	251	8	4	27	14	10	26	18	4	41	2
Anne Arundel	167	0	124	562	1	52	4	14	3	3	31	6	8	33	4
Calvert	86	0	15	113	125	0	0	3	0	1	3	2	0	2	0
Charles	110	0	18	103	2	0	0	2	2	4	4	0	2	0	0
Prince George's	81	0	119	235	5	13	143	10	3	0	19	3	9	38	4
St. Mary's	134	0	18	88	66	0	0	9	0	1	10	3	0	0	0
Area 5 Total	578	0	294	1101	199	65	147	38	8	9	67	14	19	73	8
Out of State	0	0	0	2	5	0	1	0	0	0	0	0	0	0	0
State Total	2892	10	3355	5213	637	204	553	145	90	39	213	72	102	208	284

**Table 20
Intake Cases by Alleged Offenses & County of Jurisdiction
FY 2002**

Area	OTHER FELONY	PAGER AT SCHOOL	RECKLESS ENDANGERMENT	TELEPHONE MISUSE	TOBACCO VIOLATIONS	TRAFFIC VIOLATIONS	VIOLATION OF PROBATION	OTHER MISDEMEANOR	OFFENSE NOT LINKED*	JURISDICTION TOTAL
Baltimore City	6	4	15	1	3	165	80	1249	89	12055
Area 1 Total	6	4	15	1	3	165	80	1249	89	12055
Baltimore	14	1	8	40	153	86	76	463	52	7408
Carroll	5	0	2	7	53	49	60	44	132	1320
Harford	9	0	1	6	305	60	89	126	3	2173
Howard	4	0	1	10	111	81	9	129	19	2037
Area 2 Total	32	1	12	63	622	276	234	762	207	12939
Allegany	0	0	0	4	135	24	1	62	21	1009
Frederick	3	0	1	6	312	52	115	132	8	2234
Garrett	0	0	0	0	10	8	4	21	16	254
Montgomery	27	0	1	10	50	474	26	310	17	4202
Washington	3	0	6	2	34	59	20	115	16	1543
Area 3 Total	33	0	8	22	541	617	166	640	78	9242
Caroline	0	0	0	4	14	23	0	38	5	571
Cecil	6	0	4	3	13	32	21	62	35	1134
Dorchester	1	0	0	1	9	14	0	57	62	638
Kent	0	0	0	0	28	7	2	59	2	338
Queen Anne's	1	0	0	3	45	10	3	25	5	503
Somerset	0	0	1	3	4	2	5	12	0	269
Talbot	2	0	0	3	23	9	3	22	8	481
Wicomico	4	1	2	4	191	22	3	95	7	1647
Worcester	0	0	1	4	92	35	5	217	13	1398
Area 4 Total	14	1	8	25	419	154	42	587	137	6979
Anne Arundel	6	0	10	23	176	115	5	322	50	5423
Calvert	5	0	4	1	5	41	0	60	19	934
Charles	1	0	1	5	113	33	10	84	4	1498
Prince George's	20	0	4	2	46	49	2	336	28	4120
St. Mary's	2	0	0	6	61	9	1	38	0	997
Area 5 Total	34	0	19	37	401	247	18	840	101	12972
Out of State	1	0	0	1	0	1	0	3	2	55
State Total	120	6	62	149	1986	1460	540	4081	614*	54242

*Note: For 614 Complaints, offenses are not known due to linkage problems in ASSIST.

**Table 21
Intake Cases by Alleged Offenses & County of Jurisdiction for African American Youth
FY 2002**

Area	AGGRAVATED ASSAULT	CHILD ABUSE	GENERAL SEX	KIDNAPPING	MANSLAUGHTER	MURDER	ROBBERY	SEX OFFENSE	SIMPLE ASSAULT	ARSON FELONY/ MISDEMEANOR	AUTO THEFT/ UNAUTHORIZED USE	BREAKING & ENTERING	CARJACKING	MALICIOUS DESTRUCTION	TAMPERING	THEFT/SHOPLIFTING	TRESPASSING
Baltimore City	524	6	36	2	0	12	367	60	1452	49	932	377	31	371	2	505	238
Area 1 Total	524	6	36	2	0	12	367	60	1452	49	932	377	31	371	2	505	238
Baltimore	69	19	18	3	0	13	73	27	973	17	114	169	8	209	1	1150	85
Carroll	1	0	0	0	0	0	0	0	32	0	3	2	0	3	0	6	0
Harford	2	0	2	0	0	0	19	1	148	1	24	22	0	36	1	107	12
Howard	8	0	9	0	0	0	13	5	198	5	30	54	0	34	3	225	27
Area 2 Total	80	19	29	3	0	13	105	33	1351	23	171	247	8	282	5	1488	124
Allegany	2	0	2	0	0	0	1	1	17	0	3	3	0	1	0	7	4
Frederick	2	0	3	0	0	0	7	2	164	3	7	9	0	20	0	87	1
Garrett	0	0	0	0	0	0	0	0	3	1	0	0	0	0	0	1	0
Montgomery	29	8	14	0	0	1	66	24	376	14	120	138	2	85	0	437	23
Washington	5	0	1	0	0	0	11	0	67	1	5	10	0	7	0	31	1
Area 3 Total	38	8	20	0	0	1	85	27	627	19	135	160	2	113	0	563	29
Caroline	0	0	3	0	0	0	0	1	47	1	4	4	0	10	0	17	3
Cecil	1	0	0	0	0	0	0	0	30	0	4	0	0	3	0	16	1
Dorchester	1	0	0	0	0	0	1	1	101	1	10	12	1	41	0	99	0
Kent	1	0	0	0	0	0	0	1	55	0	1	2	0	8	2	13	2
Queen Anne's	1	0	1	0	0	0	0	0	35	5	2	2	0	12	0	4	2
Somerset	3	1	0	0	0	1	0	1	71	3	1	11	0	9	0	18	5
Talbot	2	0	0	0	0	0	0	1	60	1	3	9	0	11	0	26	3
Wicomico	11	1	5	1	0	0	9	2	299	5	26	27	0	48	0	145	22
Worcester	3	0	0	0	0	0	4	3	25	4	3	11	0	9	0	43	4
Area 4 Total	23	2	9	1	0	1	14	10	723	20	54	78	1	151	2	381	42
Anne Arundel	32	0	14	0	0	1	54	9	567	4	15	81	0	138	7	496	71
Calvert	0	0	0	0	0	1	1	1	39	0	5	18	0	7	0	22	2
Charles	12	1	1	0	0	0	4	10	207	3	62	18	0	40	0	156	13
Prince George's	86	1	20	3	2	9	158	38	706	17	340	187	12	177	11	702	115
St. Mary's	1	1	1	0	0	0	1	4	73	1	9	15	0	30	0	37	5
Area 5 Total	131	3	36	3	2	11	218	62	1592	25	431	319	12	392	18	1413	206
Out of State	0	0	1	0	0	0	0	0	2	1	1	4	0	0	0	6	0
State Total	796	38	131	9	2	38	789	192	5747	137	1724	1185	54	1309	27	4356	639

**Table 21
Intake Cases by Alleged Offenses & County of Jurisdiction for African American Youth
FY 2002**

Area	ALCOHOL VIOLATION	GLUE SNIFFING & OTHER INHALANTS	NARCOTICS DISTRIBUTION	NARCOTICS POSSESSION	RUNAWAY	TRUANCY	UNGOVERNABLE	BOMB THREAT	CONSPIRACY	FALSE ALARM	FALSE REPORT	FIREWORKS VIOLATION	HANDGUN VIOLATIONS	HARASSMENT	LOITERING
Baltimore City	64	1	2550	1395	7	58	126	14	25	4	19	10	55	10	251
Area 1 Total	64	1	2550	1395	7	58	126	14	25	4	19	10	55	10	251
Baltimore	34	0	25	201	3	0	3	4	0	1	25	3	6	7	1
Carroll	3	0	0	12	3	1	0	0	0	0	0	0	0	0	0
Harford	11	0	32	35	0	0	0	0	1	0	1	0	1	2	0
Howard	10	0	11	39	6	0	2	3	0	0	1	1	1	4	0
Area 2 Total	58	0	68	287	12	1	5	7	1	1	27	4	8	13	1
Allegany	12	0	6	10	7	0	6	0	0	0	0	0	0	1	0
Frederick	5	0	22	27	25	9	5	0	1	1	0	1	0	1	0
Garrett	0	0	0	0	0	0	0	0	0	0	0	0	0	0	0
Montgomery	51	0	23	100	0	0	3	4	11	0	9	0	2	1	1
Washington	12	0	23	13	0	0	16	0	1	1	0	0	0	2	0
Area 3 Total	80	0	74	150	32	9	30	4	13	2	9	1	2	5	1
Caroline	0	0	5	6	9	0	0	2	0	0	1	1	0	1	0
Cecil	2	0	2	5	0	0	0	0	0	0	0	0	0	0	0
Dorchester	2	0	4	11	15	0	0	1	0	0	0	0	0	3	0
Kent	0	0	5	9	3	0	0	2	0	0	1	0	0	2	0
Queen Anne's	0	0	1	9	11	1	0	0	0	0	0	0	0	0	0
Somerset	1	0	0	1	4	0	0	3	0	3	0	1	0	3	0
Talbot	8	0	6	6	8	0	2	0	2	0	2	2	0	0	0
Wicomico	18	0	32	37	16	0	0	2	0	0	7	0	1	4	2
Worcester	16	0	6	28	7	1	0	2	0	0	0	0	0	0	0
Area 4 Total	47	0	61	112	73	2	2	12	2	3	11	4	1	13	2
Anne Arundel	9	0	43	110	1	9	1	5	2	1	5	1	3	8	1
Calvert	4	0	2	18	30	0	0	1	0	0	1	0	0	0	0
Charles	15	0	9	29	2	0	0	2	1	4	1	0	2	0	0
Prince George's	20	0	108	162	1	6	117	6	2	0	16	3	8	28	4
St. Mary's	13	0	5	20	13	0	0	0	0	1	3	1	0	0	0
Area 5 Total	61	0	167	339	47	15	118	14	5	6	26	5	13	36	5
Out of State	0	0	0	0	0	0	0	0	0	0	0	0	0	0	0
State Total	310	1	2920	2283	171	85	281	51	46	16	92	24	79	77	260

**Table 21
Intake Cases by Alleged Offenses & County of Jurisdiction for African American Youth
FY 2002**

Area	OTHER FELONY	PAGER AT SCHOOL	RECKLESS ENDANGERMENT	TELEPHONE MISUSE	TOBACCO VIOLATIONS	MOTOR VEHICLE/TRAFFIC VIOLATIONS	VIOLATION OF PROBATION	OTHER MISDEMEANOR	OFFENSE NOT LINKED*	JURISDICTION TOTAL
Baltimore City	6	4	12	1	3	149	78	1149	79	11034
Area 1 Total	6	4	12	1	3	149	78	1149	79	11034
Baltimore	6	1	2	6	19	22	22	218	19	3576
Carroll	1	0	0	0	4	3	4	4	8	90
Harford	3	0	0	2	23	9	25	35	2	557
Howard	3	0	1	1	17	6	4	66	5	792
Area 2 Total	13	1	3	9	63	40	55	323	34	5015
Allegany	0	0	0	1	2	1	0	5	2	94
Frederick	1	0	0	1	20	5	40	26	3	498
Garrett	0	0	0	0	0	0	2	3	1	11
Montgomery	20	0	0	2	11	133	12	120	10	1850
Washington	0	0	0	0	3	2	3	18	5	238
Area 3 Total	21	0	0	4	36	141	57	172	21	2691
Caroline	0	0	0	0	1	4	0	11	1	132
Cecil	0	0	0	0	0	0	4	0	1	69
Dorchester	0	0	0	1	3	9	0	38	45	400
Kent	0	0	0	0	0	2	1	28	0	138
Queen Anne`s	1	0	0	1	2	0	0	7	2	99
Somerset	0	0	0	3	1	0	5	10	0	159
Talbot	2	0	0	0	4	1	3	13	3	178
Wicomico	0	1	0	0	56	7	3	81	4	872
Worcester	0	0	0	1	8	5	4	33	0	220
Area 4 Total	3	1	0	6	75	28	20	221	56	2267
Anne Arundel	1	0	3	6	22	15	0	138	18	1891
Calvert	1	0	0	0	0	9	0	21	4	187
Charles	0	0	1	1	19	12	6	45	3	679
Prince George`s	13	0	2	2	18	32	2	292	18	3444
St. Mary`s	0	0	0	2	5	1	0	15	0	257
Area 5 Total	15	0	6	11	64	69	8	511	43	6458
Out of State	0	0	0	0	0	0	0	1	2	18
State Total	58	6	21	31	241	427	218	2377	235*	27483

*Note: For 235 complaints, offenses are not known due to linkage problems in ASSIST.

**Table 22
Intake Cases by Alleged Offenses & County of Jurisdiction for Caucasian Youth
FY 2002**

Area	AGGRAVATED ASSAULT	CHILD ABUSE	GENERAL SEX	KIDNAPPING	MANSLAUGHTER	MURDER	ROBBERY	SEX OFFENSE	SIMPLE ASSAULT	ARSON FELONY/ MISDEMEANOR	AUTO THEFT/ UNAUTHORIZED USE	BREAKING & ENTERING	CARJACKING	MALICIOUS DESTRUCTION	TAMPERING	THEFT/ SHOPLIFTING	TRESPASSING
Baltimore City	70	0	4	0	0	1	18	12	172	7	76	50	1	59	0	56	19
Area 1 Total	70	0	4	0	0	1	18	12	172	7	76	50	1	59	0	56	19
Baltimore	36	13	19	1	1	7	35	25	924	32	59	208	1	479	0	493	127
Carroll	11	2	5	0	0	0	2	10	145	20	14	46	0	102	1	145	24
Harford	12	1	0	0	0	0	14	10	249	1	26	53	0	138	1	265	7
Howard	5	0	5	0	1	0	6	2	201	12	29	40	0	96	1	181	22
Area 2 Total	64	16	29	1	2	7	57	47	1519	65	128	347	1	815	3	1084	180
Allegany	2	0	2	0	0	0	2	7	134	2	18	27	0	52	4	87	7
Frederick	7	0	1	0	1	0	4	6	180	14	13	60	0	117	2	230	17
Garrett	0	0	0	0	0	0	0	6	25	1	5	17	0	7	0	26	3
Montgomery	12	1	6	0	1	0	9	9	200	28	52	90	0	107	0	191	40
Washington	8	0	4	0	0	0	2	10	169	5	20	31	0	206	3	230	15
Area 3 Total	29	1	13	0	2	0	17	38	708	50	108	225	0	489	9	764	82
Caroline	0	0	5	0	0	0	0	3	65	2	13	19	0	71	0	41	7
Cecil	3	3	7	0	0	0	3	7	219	11	32	63	0	81	0	172	18
Dorchester	0	0	1	0	0	0	0	2	53	3	3	3	0	20	1	15	6
Kent	3	0	2	0	0	0	0	1	37	1	2	4	0	19	0	20	0
Queen Anne's	1	0	0	0	0	0	1	2	55	12	11	9	0	33	0	33	4
Somerset	2	0	1	0	0	0	0	1	29	4	3	5	0	3	0	11	0
Talbot	1	0	0	0	0	0	0	3	33	1	1	15	0	29	0	15	17
Wicomico	8	1	2	0	0	0	0	7	140	11	9	29	0	46	0	112	14
Worcester	1	0	3	0	0	0	5	5	46	3	23	23	0	30	0	140	3
Area 4 Total	19	4	21	0	0	0	9	31	677	48	97	170	0	332	1	559	69
Anne Arundel	25	0	15	1	1	0	17	20	710	35	55	175	0	391	8	581	121
Calvert	1	1	3	0	0	0	0	6	112	3	14	66	0	67	0	60	7
Charles	3	0	3	0	0	0	0	4	125	20	28	48	0	65	1	159	5
Prince George's	6	0	2	0	0	0	9	1	48	15	24	30	0	51	0	51	14
St. Mary's	7	0	2	0	0	0	7	5	91	6	6	52	0	115	0	71	3
Area 5 Total	42	1	25	1	1	0	33	36	1086	79	127	371	0	689	9	922	150
Out of State	0	0	0	0	0	0	0	3	3	1	1	2	0	0	0	12	0
State Total	224	22	92	2	5	8	134	167	4165	250	537	1165	2	2384	22	3397	500

**Table 22
Intake Cases by Alleged Offenses & County of Jurisdiction for Caucasian Youth
FY 2002**

Area	ALCOHOL VIOLATION	GLUE SNIFFING & OTHER INHALANTS	NARCOTICS DISTRIBUTION	NARCOTICS POSSESSION	RUNAWAY	TRUANCY	UNGOVERNABLE	BOMB THREAT	CONSPIRACY	FALSE ALARM	FALSE REPORT	FIREWORKS VIOLATION	HANDGUN VIOLATIONS	HARASSMENT	LOITERING
Baltimore City	18	5	54	108	5	12	6	3	0	1	0	0	1	1	11
Area 1 Total	18	5	54	108	5	12	6	3	0	1	0	0	1	1	11
Baltimore	151	0	20	464	1	1	2	11	4	5	20	5	5	18	6
Carroll	102	0	19	153	37	2	18	5	8	1	3	5	3	7	0
Harford	79	0	21	182	0	0	0	3	1	2	7	2	1	9	0
Howard	142	0	29	124	7	0	0	2	0	0	6	2	0	6	0
Area 2 Total	474	0	89	923	45	3	20	21	13	8	36	14	9	40	6
Allegany	164	0	17	65	15	7	34	3	0	0	3	0	0	9	0
Frederick	148	0	21	186	50	20	32	7	3	0	5	4	0	2	0
Garrett	35	0	3	16	7	12	18	0	2	0	1	0	0	3	0
Montgomery	241	0	36	166	3	0	3	13	7	2	12	3	1	1	1
Washington	142	1	8	60	1	0	108	5	0	1	5	3	2	9	0
Area 3 Total	730	1	85	493	76	39	195	28	12	3	26	10	3	24	1
Caroline	43	0	2	26	52	0	0	1	0	0	2	1	1	10	0
Cecil	108	3	7	100	12	1	0	2	7	4	4	3	1	8	0
Dorchester	35	0	8	23	6	0	0	0	0	0	0	1	1	0	0
Kent	8	0	1	18	6	1	0	2	2	0	0	0	0	2	0
Queen Anne's	44	0	5	72	33	0	1	0	0	0	0	3	0	0	0
Somerset	19	0	1	13	8	0	0	1	0	1	0	0	0	0	0
Talbot	59	0	5	38	14	0	1	1	1	1	1	4	0	2	0
Wicomico	109	0	10	57	11	1	0	7	1	1	2	0	0	3	0
Worcester	297	0	17	199	33	3	0	1	1	0	5	2	0	2	0
Area 4 Total	722	3	56	546	175	6	2	15	12	7	14	14	3	27	0
Anne Arundel	157	0	79	441	0	39	3	9	1	2	25	5	4	25	3
Calvert	79	0	13	93	93	0	0	2	0	1	2	2	0	1	0
Charles	92	0	9	74	0	0	0	0	1	0	3	0	0	0	0
Prince George's	56	0	8	64	3	6	18	4	0	0	2	0	0	8	0
St. Mary's	119	0	13	68	53	0	0	9	0	0	7	2	0	0	0
Area 5 Total	503	0	122	740	149	45	21	24	2	3	39	9	4	34	3
Out of State	0	0	0	1	5	0	1	0	0	0	0	0	0	0	0
State Total	2447	9	406	2811	455	105	245	91	39	22	115	47	20	126	21

**Table 22
Intake Cases by Alleged Offenses & County of Jurisdiction for Caucasian Youth
FY 2002**

Area	OTHER FELONY	PAGER AT SCHOOL	RECKLESS ENDANGERMENT	TELEPHONE MISUSE	TOBACCO VIOLATIONS	MOTOR VEHICLE/ TRAFFIC VIOLATIONS	VIOLATION OF PROBATION	OTHER MISDEMEANOR	OFFENSE NOT LINKED*	JURISDICTION TOTAL
Baltimore City	0	0	3	0	0	16	2	91	9	891
Area 1 Total	0	0	3	0	0	16	2	91	9	891
Baltimore	8	0	5	29	133	62	54	244	33	3741
Carroll	4	0	2	6	49	46	54	39	122	1212
Harford	6	0	1	4	281	49	64	90	1	1580
Howard	1	0	0	9	84	69	5	59	15	1161
Area 2 Total	19	0	8	48	547	226	177	432	171	7694
Allegany	0	0	0	3	133	23	1	55	18	894
Frederick	2	0	1	5	284	46	71	100	4	1643
Garrett	0	0	0	0	10	8	2	18	15	240
Montgomery	4	0	1	8	34	214	11	146	7	1660
Washington	3	0	6	2	30	55	16	95	9	1264
Area 3 Total	9	0	8	18	491	346	101	414	53	5701
Caroline	0	0	0	4	13	19	0	27	4	431
Cecil	6	0	4	3	13	32	16	61	34	1048
Dorchester	1	0	0	0	5	5	0	18	17	227
Kent	0	0	0	0	27	5	1	31	2	195
Queen Anne's	0	0	0	2	43	10	3	17	3	397
Somerset	0	0	1	0	2	2	0	2	0	109
Talbot	0	0	0	3	18	8	0	9	4	284
Wicomico	4	0	2	4	132	12	0	14	2	751
Worcester	0	0	1	2	83	29	1	181	13	1152
Area 4 Total	11	0	8	18	336	122	21	360	79	4594
Anne Arundel	5	0	7	17	150	96	5	179	30	3437
Calvert	3	0	4	1	5	32	0	38	14	723
Charles	1	0	0	4	93	20	4	38	0	800
Prince George's	6	0	1	0	27	13	0	27	4	498
St. Mary's	2	0	0	4	56	8	1	23	0	730
Area 5 Total	17	0	12	26	331	169	10	305	48	6188
Out of State	1	0	0	1	0	1	0	1	0	33
State Total	57	0	39	111	1705	880	311	1603	360*	25101

*Note: For 360 complaints, offenses are not known due to linkage problems in ASSIST.

**Table 23
Intake Cases by Alleged Offenses & County of Jurisdiction for All Other Youth
FY 2002**

Area	AGGRAVATED ASSAULT	CHILD ABUSE	GENERAL SEX	KIDNAPPING	MANSLAUGHTER	MURDER	ROBBERY	SEX OFFENSE	SIMPLE ASSAULT	ARSON FELONY/ MISDEMEANOR	AUTO THEFT/ UNAUTHORIZED USE	BREAKING & ENTERING	CARJACKING	MALICIOUS DESTRUCTION	TAMPERING	THEFT/ SHOPLIFTING	TRESPASSING
Baltimore City	5	0	3	0	0	0	6	1	29	4	10	14	0	7	0	5	1
Area 1 Total	5	0	3	0	0	0	6	1	29	4	10	14	0	7	0	5	1
Baltimore	0	0	1	0	0	0	0	0	32	1	1	2	0	9	0	22	0
Carroll	0	0	0	0	0	0	0	0	2	0	0	2	0	1	0	1	0
Harford	0	0	0	0	0	0	0	0	7	0	4	2	0	5	0	7	1
Howard	1	0	2	0	0	0	0	0	19	1	2	10	0	9	0	7	3
Area 2 Total	1	0	3	0	0	0	0	0	60	2	7	16	0	24	0	37	4
Allegany	0	0	0	0	0	0	0	0	3	0	0	0	0	2	0	2	1
Frederick	1	0	0	0	0	0	0	1	19	1	2	3	0	8	0	17	2
Garrett	0	0	0	0	0	0	0	0	1	0	0	1	0	0	0	0	0
Montgomery	2	0	6	0	0	0	3	10	88	2	33	32	0	35	0	141	12
Washington	1	0	0	0	0	0	2	0	11	0	0	0	0	3	0	4	0
Area 3 Total	4	0	6	0	0	0	5	11	122	3	35	36	0	48	0	164	15
Caroline	1	0	0	0	0	0	0	0	4	0	0	0	0	1	0	2	0
Cecil	0	0	0	0	0	0	0	0	5	0	0	2	0	1	0	2	1
Dorchester	0	0	0	0	0	0	0	0	3	0	0	0	0	0	0	4	0
Kent	0	0	0	0	0	0	0	0	0	0	0	0	0	0	0	0	0
Queen Anne's	0	0	0	0	0	0	0	2	4	0	0	0	0	0	0	0	0
Somerset	0	0	0	0	0	0	0	0	0	0	0	0	0	0	0	0	0
Talbot	0	0	0	0	0	0	0	0	6	0	0	0	0	1	0	0	0
Wicomico	1	0	0	0	0	0	0	1	3	0	0	0	0	1	0	6	0
Worcester	0	0	0	0	0	0	0	0	0	0	1	1	0	1	0	5	0
Area 4 Total	2	0	0	0	0	0	0	3	25	0	1	3	0	5	0	19	1
Anne Arundel	1	0	1	0	0	0	3	0	8	2	0	8	0	9	0	24	4
Calvert	0	0	0	0	0	0	0	0	6	0	0	6	0	0	0	1	0
Charles	0	0	0	0	0	0	0	0	8	0	2	0	0	0	0	2	0
Prince George's	2	1	1	0	0	1	3	3	33	1	17	9	0	7	1	32	5
St. Mary's	0	0	0	0	0	0	0	0	4	0	1	1	0	1	0	1	0
Area 5 Total	3	1	2	0	0	1	6	3	59	3	20	24	0	17	1	60	9
Out of State	0	0	0	0	0	0	0	0	0	0	0	0	0	0	0	2	0
State Total	15	1	14	0	0	1	17	18	295	12	73	93	0	101	1	287	30

**Table 23
Intake Cases by Alleged Offenses & County of Jurisdiction for All Other Youth
FY 2002**

Area	ALCOHOL VIOLATION	GLUE SNIFFING & OTHER INHALANTS	NARCOTICS DISTRIBUTION	NARCOTICS POSSESSION	RUNAWAY	TRUANCY	UNGOVERNABLE	BOMB THREAT	CONSPIRACY	FALSE ALARM	FALSE REPORT	FIREWORKS VIOLATION	HANDGUN VIOLATIONS	HARASSMENT	LOITERING
Baltimore City	0	0	9	9	0	7	5	0	0	0	0	0	0	0	3
Area 1 Total	2	0	9	9	0	7	5	0	0	0	0	0	0	0	3
Baltimore	1	0	1	10	0	0	0	0	0	0	0	0	0	1	0
Carroll	1	0	0	3	1	0	0	0	0	0	0	0	1	0	0
Harford	1	0	1	3	0	0	0	0	0	0	1	0	0	0	0
Howard	5	0	3	3	0	0	0	0	0	0	0	0	0	0	0
Area 2 Total	8	0	5	19	1	0	0	0	0	0	1	0	1	1	0
Allegany	4	0	0	4	1	0	0	0	1	0	0	0	0	0	0
Frederick	9	0	1	5	2	2	0	0	0	0	0	0	0	0	0
Garrett	1	0	0	0	0	0	0	0	0	0	0	0	0	0	0
Montgomery	73	0	6	47	1	0	9	3	3	1	2	1	0	0	0
Washington	4	0	2	1	0	0	5	0	0	0	0	0	0	0	0
Area 3 Total	91	0	9	57	4	2	14	3	4	1	2	1	0	0	0
Caroline	0	0	0	0	0	0	0	0	0	0	0	0	0	0	0
Cecil	4	0	0	0	0	0	0	0	0	0	0	0	0	0	0
Dorchester	0	0	1	1	0	0	0	0	0	0	0	0	0	0	0
Kent	1	0	0	2	0	0	0	0	0	0	0	0	0	1	0
Queen Anne's	0	0	0	0	0	0	0	0	0	0	0	0	0	0	0
Somerset	0	0	0	0	0	0	0	0	0	0	0	0	0	0	0
Talbot	7	0	0	1	2	0	0	0	0	0	0	0	0	0	0
Wicomico	1	0	0	2	1	0	0	0	0	0	1	0	0	0	0
Worcester	7	0	0	5	0	0	0	0	0	0	0	0	0	0	0
Area 4 Total	20	0	1	11	3	0	0	0	0	0	1	0	0	1	0
Anne Arundel	1	0	2	11	0	4	0	0	0	0	1	0	1	0	0
Calvert	3	0	0	2	2	0	0	0	0	0	0	0	0	1	0
Charles	3	0	0	0	0	0	0	0	0	0	0	0	0	0	0
Prince George's	5	0	3	9	1	1	8	0	1	0	1	0	1	2	0
St. Mary's	2	0	0	0	0	0	0	0	0	0	0	0	0	0	0
Area 5 Total	14	0	5	22	3	5	8	0	1	0	2	0	2	3	0
Out of State	0	0	0	1	0	0	0	0	0	0	0	0	0	0	0
State Total	135	0	29	119	11	14	27	3	5	1	6	1	3	5	3

Table 23
Intake Cases by Alleged Offenses & County of Jurisdiction for All Other Youth
FY 2002

Area	OTHER FELONY	PAGER AT SCHOOL	RECKLESS ENDANGERMENT	TELEPHONE MISUSE	TOBACCO VIOLATIONS	MOTOR VEHICLE/TRAFFIC VIOLATIONS	VIOLATION OF PROBATION	OTHER MISDEMEANOR	OFFENSE NOT LINKED*	JURISDICTION TOTAL
Baltimore City	0	0	0	0	0	0	0	9	1	130
Area 1 Total	0	0	0	0	0	0	0	9	1	130
Baltimore	0	0	1	5	1	2	0	1	0	91
Carroll	0	0	0	1	0	0	2	1	2	18
Harford	0	0	0	0	1	2	0	1	0	36
Howard	0	0	0	0	10	6	0	4	0	85
Area 2 Total	0	0	1	6	12	10	2	7	2	230
Allegany	0	0	0	0	0	0	0	2	1	21
Frederick	0	0	0	0	8	1	4	6	1	93
Garrett	0	0	0	0	0	0	0	0	0	3
Montgomery	3	0	0	0	5	127	3	44	0	692
Washington	0	0	0	0	1	2	1	2	2	41
Area 3 Total	3	0	0	0	14	130	8	54	4	850
Caroline	0	0	0	0	0	0	0	0	0	8
Cecil	0	0	0	0	0	0	1	1	0	17
Dorchester	0	0	0	0	1	0	0	1	0	11
Kent	0	0	0	0	1	0	0	0	0	5
Queen Anne's	0	0	0	0	0	0	0	1	0	7
Somerset	0	0	0	0	1	0	0	0	0	1
Talbot	0	0	0	0	1	0	0	0	1	19
Wicomico	0	0	0	0	3	3	0	0	1	24
Worcester	0	0	0	1	1	1	0	3	0	26
Area 4 Total	0	0	0	1	8	4	1	6	2	118
Anne Arundel	0	0	0	0	4	4	0	5	2	95
Calvert	1	0	0	0	0	0	0	1	1	24
Charles	0	0	0	0	1	1	0	1	1	19
Prince George's	1	0	1	0	1	4	0	17	6	178
St. Mary's	0	0	0	0	0	0	0	0	0	10
Area 5 Total	2	0	1	0	6	9	0	24	10	326
Out of State	0	0	0	0	0	0	0	1	0	4
State Total	5	0	2	7	40	153	11	101	19*	1658

*Note: For 19 complaints, offenses are not known due to linkage problems in ASSIST.

Table 24
Intake Cases by Alleged Offenses & County of Jurisdiction for Males
FY 2002

Area	AGGRAVATED ASSAULT	CHILD ABUSE	GENERAL SEX	KIDNAPPING	MANSLAUGHTER	MURDER	ROBBERY	SEX OFFENSE	SIMPLE ASSAULT	ARSON FELONY/ MISDEMEANOR	AUTO THEFT/ UNAUTHORIZED USE	BREAKING & ENTERING	CARJACKING	MALICIOUS DESTRUCTION	TAMPERING	THEFT/SHOPLIFTING	TRESPASSING
Baltimore City	393	4	39	2	0	11	350	70	1051	50	899	375	31	341	2	397	215
Area 1 Total	393	4	39	2	0	11	350	70	1051	50	899	375	31	341	2	397	215
Baltimore	93	30	38	3	1	18	103	51	1252	45	143	342	9	555	1	974	179
Carroll	10	2	5	0	0	0	2	10	127	18	11	45	0	92	0	105	24
Harford	14	1	2	0	0	0	29	9	252	2	45	54	0	154	1	271	16
Howard	10	0	16	0	0	0	18	6	283	17	44	98	0	128	4	259	41
Area 2 Total	127	33	61	3	1	18	152	76	1914	82	243	539	9	929	6	1609	260
Allegany	4	0	3	0	0	0	3	7	101	2	15	24	0	46	4	67	8
Frederick	6	0	4	0	0	0	11	9	257	18	13	70	0	113	2	212	17
Garrett	0	0	0	0	0	0	0	6	23	2	4	18	0	7	0	23	2
Montgomery	36	8	24	0	1	0	69	41	459	37	177	239	2	204	0	540	58
Washington	10	0	5	0	0	0	15	10	176	6	19	37	0	205	3	166	14
Area 3 Total	56	8	36	0	1	0	98	73	1016	65	228	388	2	575	9	1008	99
Caroline	0	0	7	0	0	0	0	4	64	2	17	22	0	74	0	49	8
Cecil	3	3	6	0	0	0	3	7	187	9	23	61	0	70	0	152	18
Dorchester	0	0	1	0	0	0	1	3	86	4	11	12	1	43	1	95	4
Kent	2	0	1	0	0	0	0	2	63	1	3	5	0	27	2	26	1
Queen Anne's	1	0	1	0	0	0	0	4	69	12	8	9	0	40	0	25	5
Somerset	5	1	0	0	0	0	0	2	66	7	4	13	0	11	0	26	4
Talbot	2	0	0	0	0	0	0	4	73	2	4	18	0	30	0	33	15
Wicomico	13	2	7	1	0	0	9	7	309	14	29	50	0	76	0	165	26
Worcester	4	0	3	0	0	0	9	7	50	6	19	33	0	35	0	119	6
Area 4 Total	30	6	26	1	0	0	22	40	967	57	118	223	1	406	3	690	87
Anne Arundel	47	0	27	1	1	1	69	27	869	35	46	226	0	465	12	727	156
Calvert	1	1	3	0	0	1	1	6	113	1	10	73	0	65	0	58	7
Charles	13	1	4	0	0	0	4	13	203	16	70	45	0	84	1	182	18
Prince George's	65	2	22	1	2	9	162	41	550	28	330	201	12	195	12	603	106
St. Mary's	5	1	3	0	0	0	7	9	112	4	12	56	0	141	0	75	6
Area 5 Total	131	5	59	2	3	11	243	96	1847	84	468	601	12	950	25	1645	293
Out of State	0	0	1	0	0	0	0	3	5	1	2	6	0	0	0	16	0
State Total	737	56	222	8	5	40	865	358	6800	339	1958	2132	55	3201	45	5365	954

**Table 24
Intake Cases by Alleged Offenses & County of Jurisdiction for Males
FY 2002**

Area	ALCOHOL VIOLATION	GLUE SNIFFING & OTHER INHALANTS	NARCOTICS DISTRIBUTION	NARCOTICS POSSESSION	RUNAWAY	TRUANCY	UNGOVERNABLE	BOMB THREAT	CONSPIRACY	FALSE ALARM	FALSE REPORT	FIREWORKS VIOLATION	HANDGUN VIOLATIONS	HARASSMENT	LOITERING
Baltimore City	72	4	2469	1372	6	47	83	15	23	4	12	8	54	5	251
Area 1 Total	72	4	2469	1372	6	47	83	15	23	4	12	8	54	5	251
Baltimore	130	0	45	557	3	1	2	13	3	6	26	8	10	16	6
Carroll	66	0	15	135	18	3	6	5	6	1	2	5	4	2	0
Harford	64	0	50	176	0	0	0	2	2	1	4	1	1	5	0
Howard	101	0	36	135	6	0	1	3	0	0	3	3	1	7	0
Area 2 Total	361	0	146	1003	27	4	9	23	11	8	35	17	16	30	6
Allegany	110	0	19	58	5	2	16	3	0	0	0	0	0	3	0
Frederick	108	0	40	170	25	17	14	6	3	1	2	4	0	3	0
Garrett	29	0	3	11	4	9	8	0	1	0	1	0	0	3	0
Montgomery	262	0	58	268	1	0	9	18	18	2	17	4	2	2	1
Washington	119	1	28	55	0	0	64	4	0	1	3	3	2	5	0
Area 3 Total	628	1	148	562	35	28	111	31	22	4	23	11	4	16	1
Caroline	15	0	7	22	22	0	0	1	0	0	2	2	1	6	0
Cecil	80	1	6	83	5	1	0	1	3	2	0	3	1	4	0
Dorchester	26	0	11	31	4	0	0	0	0	0	0	1	0	3	0
Kent	7	0	6	23	2	0	0	4	0	0	1	0	0	4	0
Queen Anne's	32	0	5	64	11	1	0	0	0	0	0	3	0	0	0
Somerset	14	0	1	14	7	0	0	2	0	3	0	1	0	2	0
Talbot	56	0	10	34	2	0	2	1	1	1	0	4	0	1	0
Wicomico	89	0	40	85	14	0	0	8	1	0	6	0	1	6	2
Worcester	203	0	22	204	19	2	0	3	1	0	5	2	0	2	0
Area 4 Total	522	1	108	560	86	4	2	20	6	6	14	16	3	28	2
Anne Arundel	104	0	106	448	0	21	3	11	2	2	24	5	6	26	4
Calvert	55	0	12	94	54	0	0	1	0	1	3	2	0	2	0
Charles	77	0	16	80	0	0	0	2	1	4	0	0	2	0	0
Prince George's	63	0	111	211	3	10	67	10	1	0	10	3	8	24	4
St. Mary's	69	0	14	71	7	0	0	7	0	0	4	3	0	0	0
Area 5 Total	368	0	259	904	64	31	70	31	4	7	41	13	16	52	8
Out of State	0	0	0	2	3	0	1	0	0	0	0	0	0	0	0
State Total	1951	6	3130	4403	221	114	276	120	66	29	125	65	93	131	268

**Table 24
Intake Cases by Alleged Offenses & County of Jurisdiction for Males
FY 2002**

Area	OTHER FELONY	PAGER AT SCHOOL	RECKLESS ENDANGERMENT	TELEPHONE MISUSE	TOBACCO VIOLATIONS	MOTOR VEHICLE/TRAFFIC VIOLATIONS	VIOLATION OF PROBATION	OTHER MISDEMEANOR	OFFENSE NOT LINKED*	JURISDICTION TOTAL
Baltimore City	5	3	11	1	3	152	79	891	80	9880
Area 1 Total	5	3	11	1	3	152	79	891	80	9880
Baltimore	14	1	8	23	97	70	53	382	46	5357
Carroll	1	0	2	5	42	36	52	41	85	983
Harford	7	0	1	2	207	50	66	101	0	1590
Howard	3	0	1	6	76	65	9	97	17	1494
Area 2 Total	25	1	12	36	422	221	180	621	148	9424
Allegany	0	0	0	3	77	19	1	41	13	654
Frederick	3	0	1	4	202	36	93	106	8	1578
Garrett	0	0	0	0	10	3	4	20	9	200
Montgomery	19	0	1	8	40	423	19	257	16	3340
Washington	1	0	6	1	26	47	17	98	11	1158
Area 3 Total	23	0	8	16	355	528	134	522	57	6930
Caroline	0	0	0	1	6	18	0	24	5	379
Cecil	2	0	4	1	6	25	12	46	22	850
Dorchester	1	0	0	1	6	12	0	28	39	425
Kent	0	0	0	0	20	7	2	39	0	248
Queen Anne's	1	0	0	2	31	7	3	19	3	356
Somerset	0	0	1	2	3	1	5	11	0	206
Talbot	1	0	0	1	19	5	2	20	5	346
Wicomico	4	1	2	2	130	16	3	72	6	1196
Worcester	0	0	0	3	70	27	2	165	12	1033
Area 4 Total	9	1	7	13	291	118	29	424	92	5039
Anne Arundel	4	0	9	13	123	84	5	259	35	4003
Calvert	3	0	4	0	5	30	0	45	12	663
Charles	0	0	1	2	81	27	10	61	3	1021
Prince George's	19	0	4	1	39	32	1	251	21	3234
St. Mary's	2	0	0	3	47	6	1	30	0	695
Area 5 Total	28	0	18	19	295	179	17	646	71	9616
Out of State	0	0	0	0	0	1	0	2	1	44
State Total	90	5	56	85	1366	1199	439	3106	449*	40933

*Note: For 449 complaints, offenses are not known due to linkage problems in ASSIST.

Table 25
Intake Cases by Alleged Offenses & County of Jurisdiction for Females
FY 2002

Area	AGGRAVATED ASSAULT	CHILD ABUSE	GENERAL SEX	KIDNAPPING	MANSLAUGHTER	MURDER	ROBBERY	SEX OFFENSE	SIMPLE ASSAULT	ARSON FELONY/ MISDEMEANOR	AUTO THEFT/ UNAUTHORIZED USE	BREAKING & ENTERING	CARJACKING	MALICIOUS DESTRUCTION	TAMPERING	THEFT/ SHOPLIFTING	TRESPASSING
Baltimore City	206	2	4	0	0	2	41	3	602	10	119	66	1	96	0	169	43
Area 1 Total	206	2	4	0	0	2	41	3	602	10	119	66	1	96	0	169	43
Baltimore	12	2	0	1	0	2	5	1	677	5	31	37	0	142	0	691	33
Carroll	2	0	0	0	0	0	0	0	52	2	6	5	0	14	1	47	0
Harford	0	0	0	0	0	0	4	2	152	0	9	23	0	25	1	108	4
Howard	4	0	0	0	1	0	1	1	135	1	17	6	0	11	0	154	11
Area 2 Total	18	2	0	1	1	2	10	4	1016	8	63	71	0	192	2	1000	48
Allegany	0	0	1	0	0	0	0	1	53	0	6	6	0	9	0	29	4
Frederick	4	0	0	0	1	0	0	0	106	0	9	2	0	32	0	122	3
Garrett	0	0	0	0	0	0	0	0	6	0	1	0	0	0	0	4	1
Montgomery	7	1	2	0	0	1	9	2	205	7	28	21	0	23	0	229	17
Washington	4	0	0	0	0	0	0	0	71	0	6	4	0	11	0	99	2
Area 3 Total	15	1	3	0	1	1	9	3	441	7	50	33	0	75	0	483	27
Caroline	1	0	1	0	0	0	0	0	52	1	0	1	0	8	0	11	2
Cecil	1	0	1	0	0	0	0	0	67	2	13	4	0	15	0	38	2
Dorchester	1	0	0	0	0	0	0	0	71	0	2	3	0	18	0	23	2
Kent	2	0	1	0	0	0	0	0	29	0	0	1	0	0	0	7	1
Queen Anne's	1	0	0	0	0	0	1	0	25	5	5	2	0	5	0	12	1
Somerset	0	0	1	0	0	1	0	0	34	0	0	3	0	1	0	3	1
Talbot	1	0	0	0	0	0	0	0	26	0	0	6	0	11	0	8	5
Wicomico	7	0	0	0	0	0	0	3	133	2	6	6	0	19	0	98	10
Worcester	0	0	0	0	0	0	0	1	21	1	8	2	0	5	0	69	1
Area 4 Total	14	0	4	0	0	1	1	4	458	11	34	28	0	82	0	269	25
Anne Arundel	11	0	3	0	0	0	5	2	416	6	24	38	0	73	3	374	40
Calvert	0	0	0	0	0	0	0	1	44	2	9	17	0	9	0	25	2
Charles	2	0	0	0	0	0	0	1	137	7	22	21	0	21	0	135	0
Prince George's	29	0	1	2	0	1	8	1	237	5	51	25	0	40	0	182	28
St. Mary's	3	0	0	0	0	0	1	0	56	3	4	12	0	5	0	34	2
Area 5 Total	45	0	4	2	0	1	14	5	890	23	110	113	0	148	3	750	72
Out of State	0	0	0	0	0	0	0	0	0	1	0	0	0	0	0	4	0
State Total	298	5	15	3	2	7	75	19	3407	60	376	311	1	593	5	2675	215

**Table 25
Intake Cases by Alleged Offenses & County of Jurisdiction for Females
FY 2002**

Area	ALCOHOL VIOLATION	GLUE SNIFFING & OTHER INHALANTS	NARCOTICS DISTRIBUTION	NARCOTICS POSSESSION	RUNAWAY	TRUANCY	UNGOVERNABLE	BOMB THREAT	CONSPIRACY	FALSE ALARM	FALSE REPORT	FIREWORKS VIOLATION	HANDGUN VIOLATIONS	HARASSMENT	LOITERING
Baltimore City	12	2	144	140	6	30	54	2	2	1	7	2	2	6	14
Area 1 Total	12	2	144	140	6	30	54	2	2	1	7	2	2	6	14
Baltimore	56	0	1	118	1	0	3	2	1	0	19	0	1	10	1
Carroll	40	0	4	33	23	0	12	0	2	0	1	0	0	5	0
Harford	27	0	4	44	0	0	0	1	0	1	5	1	1	6	0
Howard	56	0	7	31	7	0	1	2	0	0	4	0	0	3	0
Area 2 Total	179	0	16	226	31	0	16	5	3	1	29	1	2	24	1
Allegany	70	0	4	21	18	5	24	0	1	0	3	0	0	7	0
Frederick	54	0	4	48	52	14	23	1	1	0	3	1	0	0	0
Garrett	7	0	0	5	3	3	10	0	1	0	0	0	0	0	0
Montgomery	103	0	7	45	3	0	6	2	3	1	6	0	1	0	1
Washington	39	0	5	19	1	0	65	1	1	1	2	0	0	6	0
Area 3 Total	273	0	20	138	77	22	128	4	7	2	14	1	1	13	1
Caroline	28	0	0	10	39	0	0	2	0	0	1	0	0	5	0
Cecil	34	2	3	22	7	0	0	1	4	2	4	0	0	4	0
Dorchester	11	0	2	4	17	0	0	1	0	0	0	0	1	0	0
Kent	2	0	0	6	7	1	0	0	2	0	0	0	0	1	0
Queen Anne's	12	0	1	17	33	0	1	0	0	0	0	0	0	0	0
Somerset	6	0	0	0	5	0	0	2	0	1	0	0	0	1	0
Talbot	18	0	1	11	22	0	1	0	2	0	3	2	0	1	0
Wicomico	39	0	2	11	14	1	0	1	0	1	4	0	0	1	0
Worcester	117	0	1	28	21	2	0	0	0	0	0	0	0	0	0
Area 4 Total	267	2	10	109	165	4	2	7	8	4	12	2	1	13	0
Anne Arundel	63	0	18	114	1	31	1	3	1	1	7	1	2	7	0
Calvert	31	0	3	19	71	0	0	2	0	0	0	0	0	0	0
Charles	33	0	2	23	2	0	0	0	1	0	4	0	0	0	0
Prince George's	18	0	8	24	2	3	76	0	2	0	9	0	1	14	0
St. Mary's	65	0	4	17	59	0	0	2	0	1	6	0	0	0	0
Area 5 Total	210	0	35	197	135	34	77	7	4	2	26	1	3	21	0
Out of State	0	0	0	0	2	0	0	0	0	0	0	0	0	0	0
State Total	941	4	225	810	416	90	277	25	24	10	88	7	9	77	16

**Table 25
Intake Cases by Alleged Offenses & County of Jurisdiction for Females
FY 2002**

Area	OTHER FELONY	PAGER AT SCHOOL	RECKLESS ENDANGERMENT	TELEPHONE MISUSE	TOBACCO VIOLATIONS	MOTOR VEHICLE/TRAFFIC VIOLATIONS	VIOLATION OF PROBATION	OTHER MISDEMEANOR	OFFENSE NOT LINKED*	JURISDICTION TOTAL
Baltimore City	1	1	4	0	0	13	1	358	9	2175
Area 1 Total	1	1	4	0	0	13	1	358	9	2175
Baltimore	0	0	0	17	56	16	23	81	6	2051
Carroll	4	0	0	2	11	13	8	3	47	337
Harford	2	0	0	4	98	10	23	25	3	583
Howard	1	0	0	4	35	16	0	32	3	544
Area 2 Total	7	0	0	27	200	55	54	141	59	3515
Allegany	0	0	0	1	58	5	0	21	8	355
Frederick	0	0	0	2	110	16	22	26	0	656
Garrett	0	0	0	0	0	5	0	1	7	54
Montgomery	8	0	0	2	10	51	7	53	1	862
Washington	2	0	0	1	8	12	3	17	5	385
Area 3 Total	10	0	0	6	186	89	32	118	21	2312
Caroline	0	0	0	3	8	5	0	14	0	192
Cecil	4	0	0	2	7	7	9	16	13	284
Dorchester	0	0	0	0	3	2	0	29	23	213
Kent	0	0	0	0	8	0	0	20	2	90
Queen Anne's	0	0	0	1	14	3	0	6	2	147
Somerset	0	0	0	1	1	1	0	1	0	63
Talbot	1	0	0	2	4	4	1	2	3	135
Wicomico	0	0	0	2	61	6	0	23	1	451
Worcester	0	0	1	1	22	8	3	52	1	365
Area 4 Total	5	0	1	12	128	36	13	163	45	1940
Anne Arundel	2	0	1	10	53	31	0	63	15	1420
Calvert	2	0	0	1	0	11	0	15	7	271
Charles	1	0	0	3	32	6	0	23	1	477
Prince George's	1	0	0	1	7	17	1	85	7	886
St. Mary's	0	0	0	3	14	3	0	8	0	302
Area 5 Total	6	0	1	18	106	68	1	194	30	3356
Out of State	1	0	0	1	0	0	0	1	1	11
State Total	30	1	6	64	620	261	101	975	165*	13309

*Note: For 165 complaints, offenses are not known due to linkage problems in ASSIST.

**Table 26
Alleged Offense Rates Per 1,000 Population by Offense Category & County of Jurisdiction
FY 2002**

Area	10-17 Yrs. Population	Person-to-Person	Per 1,000 Population	Property	Per 1,000 Population	Alcohol	Per 1,000 Population	Narcotics	Per 1,000 Population	CINS	Per 1,000 Population	Other	Per 1,000 Population	County of Juris.	County of Juris. Per 1,000 Population
Baltimore City	65700	2780	42.3	2814	42.8	84	1.3	4131	62.9	226	3.4	1931	29.4	11966	182.1
Area 1 Total	65700	2780	42.3	2814	42.8	84	1.3	4131	62.9	226	3.4	1931	29.4	11966	182.1
Baltimore	84344	2289	27.1	3187	37.8	186	2.2	721	8.5	10	0.1	963	11.4	7356	87.2
Carroll	18595	210	11.3	370	19.9	106	5.7	187	10.1	62	3.3	253	13.6	1188	63.9
Harford	26619	465	17.5	713	26.8	91	3.4	274	10.3	0	0.0	627	23.6	2170	81.5
Howard	31378	475	15.1	791	25.2	157	5.0	209	6.7	15	0.5	371	11.8	2018	64.3
Area 2 Total	160936	3439	21.4	5061	31.4	540	3.4	1391	8.6	87	0.5	2214	13.8	12732	79.1
Allegany	6928	173	25.0	220	31.8	180	26.0	102	14.7	70	10.1	243	35.1	988	142.6
Frederick	25211	398	15.8	613	24.3	162	6.4	262	10.4	145	5.8	646	25.6	2226	88.3
Garrett	2974	35	11.8	62	20.8	36	12.1	19	6.4	37	12.4	49	16.5	238	80.0
Montgomery	102672	865	8.4	1582	15.4	365	3.6	378	3.7	19	0.2	976	9.5	4185	40.8
Washington	13850	291	21.0	572	41.3	158	11.4	108	7.8	130	9.4	268	19.4	1527	110.3
Area 3 Total	151635	1762	11.6	3049	20.1	901	5.9	869	5.7	401	2.6	2182	14.4	9164	60.4
Caroline	3616	129	35.7	195	53.9	43	11.9	39	10.8	61	16.9	99	27.4	566	156.5
Cecil	10592	278	26.2	407	38.4	114	10.8	117	11.0	13	1.2	170	16.0	1099	103.8
Dorchester	3194	163	51.0	219	68.6	37	11.6	48	15.0	21	6.6	88	27.6	576	180.3
Kent	1922	100	52.0	74	38.5	9	4.7	35	18.2	10	5.2	108	56.2	336	174.8
Queen Anne's	4724	102	21.6	129	27.3	44	9.3	87	18.4	46	9.7	90	19.1	498	105.4
Somerset	1965	110	56.0	73	37.2	20	10.2	15	7.6	12	6.1	39	19.8	269	136.9
Talbot	3478	106	30.5	132	38.0	74	21.3	56	16.1	27	7.8	78	22.4	473	136.0
Wicomico	8962	491	54.8	501	55.9	128	14.3	138	15.4	29	3.2	353	39.4	1640	183.0
Worcester	4596	95	20.7	304	66.1	320	69.6	255	55.5	44	9.6	367	79.9	1385	301.3
Area 4 Total	43049	1574	36.6	2034	47.2	789	18.3	790	18.4	263	6.1	1392	32.3	6842	158.9
Anne Arundel	53415	1479	27.7	2225	41.7	167	3.1	686	12.8	57	1.1	759	14.2	5373	100.6
Calvert	11125	171	15.4	278	25.0	86	7.7	128	11.5	125	11.2	127	11.4	915	82.2
Charles	16448	378	23.0	622	37.8	110	6.7	121	7.4	2	0.1	261	15.9	1494	90.8
Prince George's	92962	1133	12.2	1818	19.6	81	0.9	354	3.8	161	1.7	545	5.9	4092	44.0
St. Mary's	11125	197	17.7	354	31.8	134	12.0	106	9.5	66	5.9	140	12.6	997	89.6
Area 5 Total	185075	3358	18.1	5297	28.6	578	3.1	1395	7.5	411	2.2	1832	9.9	12871	69.5
State Total	606395	12913	130.0	18255	170.3	2892	32.0	8576	103.1	1388	15.0	9551	99.8	53575	88.4

Note: 1. FY 2002 10-17 Year old Population Projections are taken from "Public School Enrollment Projections 2002-2011" report prepared by Maryland Office of State Planning.
2. Total Referrals exclude 614 Offenses which are not Linked to the Referrals and 53 Out-Of-State Referrals.

Table 27
Rates of Total and Delinquent Referrals per 1,000 Youth Population
FY 2002

County of Residence	10-17 Yrs. Population	Total Referrals	Per 1,000 Population	Delinquent Referrals	Per 1,000 Population
Baltimore City	65700	12055	183.5	11742	178.7
Area 1 Total	65700	12055	183.5	11742	178.7
Baltimore	84344	7408	87.8	7059	83.7
Carroll	18595	1320	71.0	1099	59.1
Harford	26619	2173	81.6	1777	66.8
Howard	31378	2038	64.9	1754	55.9
Area 2 Total	160936	12939	80.4	11690	72.6
Allegany	6928	1009	145.6	624	90.1
Frederick	25211	2234	88.6	1615	64.1
Garrett	2974	254	85.4	171	57.5
Montgomery	102672	4202	40.9	3768	36.7
Washington	13850	1543	111.4	1221	88.2
Area 3 Total	151635	9242	60.9	7399	48.8
Caroline	3616	571	157.9	453	125.3
Cecil	10592	1134	107.1	994	93.8
Dorchester	3194	638	199.7	571	178.8
Kent	1922	338	175.9	291	151.4
Queen Anne's	4724	503	106.5	368	77.9
Somerset	1965	269	136.9	233	118.6
Talbot	3478	481	138.3	357	102.6
Wicomico	8962	1647	183.8	1299	144.9
Worcester	4596	1398	304.2	942	205.0
Area 4 Total	43049	6979	162.1	5508	127.9
Anne Arundel	53415	5423	101.5	5023	94.0
Calvert	11125	934	84.0	718	64.5
Charles	16448	1498	91.1	1273	77.4
Prince George's	92962	4120	44.3	3832	41.2
St. Mary's	11125	997	89.6	736	66.2
Area 5 Total	185075	12972	70.1	11582	62.6
State Total	606395	54187	89.4	47921	79.0

*Note: 1. FY 2002 10-17 Year old Population Projections are taken from "Public School Enrollment Projections 2002-2011" report prepared by Maryland Office of State Planning.
2. Total Referrals exclude 55 Out-Of-State Cases and Total Delinquent Referrals exclude 49 Out-Of-State Referrals.*

Table 28
Court Dispositions of Formalized Cases by Gender
FY 2002

Court Dispositions by Gender	Females	Percent Total	Males	Percent Total	Juris. Total	Percent Total
Probation/Probation To Parent/ Protective Supervision	904	22.4	4631	24.4	5535	24.0
Dismissed/Closed	1071	26.6	5493	28.9	6564	28.5
Committed to DJJ For Placement	144	3.6	1367	7.2	1511	6.6
Continued Case/STET	750	18.6	2256	11.9	3006	13.1
Petition Denied by State Attorney	631	15.7	2345	12.3	2976	12.9
Jurisdiction Waived	11	0.3	324	1.7	335	1.5
Inter-Region/State	2	0.0	25	0.1	27	0.1
Nol Pros	54	1.3	214	1.1	268	1.2
Transfer From One Juris. To Another	7	0.2	32	0.2	39	0.2
Writ Pending	49	1.2	197	1.0	246	1.1
Others	84	2.1	313	1.6	397	1.7
Disposition Pending	308	7.6	1699	8.9	2007	8.7
Petition Withdrawn	12	0.3	103	0.5	115	0.5
State Total	4027	100.0	18999	100.0	23026	100.0

Table 29
Court Dispositions of Formalized Cases by Race
FY 2002

Court Dispositions by Race	African-American	Percent Total	Caucasian	Percent Total	Other	Percent Total	Juris. Total
Probation/Probation to Parent/ Protective Supervision	2703	19.3	2625	31.5	207	30.4	5535
Dismissed/Closed	4781	34.1	1571	18.9	212	31.2	6564
Committed to DJJ for Placement	958	6.8	521	6.3	32	4.7	1511
Continued Case/STET	1605	11.4	1327	15.9	74	10.9	3006
Petition Denied by State Attorney	2060	14.7	849	10.2	67	9.9	2976
Jurisdiction Waived	201	1.4	125	1.5	9	1.3	335
Inter-Region/State	10	0.1	17	0.2	0	0.0	27
Nol Pros	80	0.6	185	2.2	3	0.4	268
Transfer From One Juris. To Another	19	0.1	18	0.2	2	0.3	39
Writ Pending	199	1.4	29	0.3	18	2.6	246
Others	211	1.5	180	2.2	6	0.9	397
Disposition Pending	1124	8.0	834	10.0	49	7.2	2007
Petition Withdrawn	73	0.5	41	0.5	1	0.1	115
State Total	14024	100.0	8322	100.0	680	100.0	23026

**Table 30
Court Dispositions by County of Jurisdiction
FY 2002**

County of Jurisdiction	Jurisdiction Waived	Committed to DJJ for Placement	Probation/Probation to Parent/ Protective Supervision	Dismissed/Closed	Continued Case/STET	Petition Denied by State Attorney	Petition Withdrawn	Inter-Region/State	Nol Pros	Transfer From One Jurisdiction to Another	Writ Pending	Others	Disposition Pending	Jurisdiction Total
Baltimore City	54	415	1066	4007	189	1614	32	0	4	1	38	79	534	8033
Area 1 Total	54	415	1066	4007	189	1614	32	0	4	1	38	79	534	8033
Baltimore	98	265	928	165	1689	75	6	0	110	3	53	100	323	3815
Carroll	2	52	198	19	61	90	3	0	24	0	1	9	83	542
Harford	22	131	230	137	7	125	10	1	11	0	1	25	61	761
Howard	0	40	171	119	138	52	0	1	4	0	2	37	67	631
Area 2 Total	122	488	1527	440	1895	342	19	2	149	3	57	171	534	5749
Allegany	2	28	91	32	2	64	0	3	13	3	0	12	5	255
Frederick	17	59	233	405	43	52	0	0	0	0	0	13	56	878
Garrett	1	0	26	19	0	13	1	0	1	0	0	3	14	78
Montgomery	21	71	602	541	107	96	2	2	0	8	28	6	213	1697
Washington	9	30	194	61	62	38	3	1	4	0	1	21	161	585
Area 3 Total	50	188	1146	1058	214	263	6	6	18	11	29	55	449	3493
Caroline	0	6	28	20	6	32	0	0	2	0	0	1	29	124
Cecil	11	40	175	123	28	33	5	1	1	0	3	1	31	452
Dorchester	16	2	37	23	4	34	0	0	1	0	0	0	22	139
Kent	0	0	18	47	1	12	0	0	0	0	0	0	10	88
Queen Anne's	0	9	36	20	3	15	0	0	3	0	0	2	1	89
Somerset	19	2	14	8	2	4	1	0	2	0	0	0	7	59
Talbot	2	11	51	45	11	28	0	0	0	1	0	3	14	166
Wicomico	11	13	81	13	39	143	1	0	17	1	0	3	20	342
Worcester	25	11	71	38	14	10	1	0	2	3	6	0	31	212
Area 4 Total	84	94	511	337	108	311	8	1	28	5	9	10	165	1671
Anne Arundel	4	81	472	340	325	138	0	1	2	5	0	61	151	1580
Calvert	3	2	159	14	90	55	0	0	48	0	0	3	12	386
Charles	10	31	132	12	53	54	50	0	1	2	8	7	41	401
Prince George's	7	201	388	268	103	142	0	4	0	10	103	11	101	1338
St. Mary's	1	10	119	83	28	54	0	1	18	2	1	0	17	334
Area 5 Total	25	325	1270	717	599	443	50	6	69	19	112	82	322	4039
Out of State	0	1	15	5	1	3	0	12	0	0	1	0	3	41
State Total	335	1511	5535	6564	3006	2976	115	27	268	39	246	397	2007	23026