



Maryland Department of Juvenile Justice
One Center Plaza, 120 W. Fayette Street
Baltimore, MD 21201

ANNUAL STATISTICAL REPORT

**FISCAL YEAR
2001**

**Parris N. Glendening
Governor**

**Kathleen Kennedy Townsend
Lt. Governor**

**Bishop L. Robinson
Secretary**

January 2003

INTRODUCTION

The Maryland Department of Juvenile Justice's Office Research and Program Development is pleased to present its 2001 Annual Statistical Report. The Annual Statistical Report brings together, in a single volume, descriptive statistics¹ of the Maryland Department of Juvenile Justice (DJJ). This report serves as an essential reference book. The numbers contained in this report are used in capital planning, three-year planning and budget documents. Executive, professional, and legislative staff as well as the public relies on these statistics. The Annual Statistical Report contains two sections.

Section One of the report provides the intake profile, which includes case-related information from referral to the court disposition stage. In FY 2,001, the Department's Intake Officers handled 52,441 cases. This number of cases represents 35,277 youth. The intake process determines if a youth requires formal court intervention or can be served by pre-court supervision or by processes known as resolving or disapproving the case at intake. A case is counted each time a youth is referred on a new charge during the year.

Section Two provides information about services provided to youths in nonresidential and residential programs. This section contains statistics on DJJ contracted programs, community supervision, and residential services and secure commitment programs. In FY 2001, the Department served 5,943 youths in out of home placements, including secure detention programs. A separate table of contents is provided for Sections One and Two.

¹

The statistics included in this report have been subject to a detailed quality assurance process that involved removing erroneous cases and minimizing the occurrences of missing data. Because of this quality assurance review, the statistics presented in this report may slightly vary from those included in earlier Departmental documents.

Section One

Intake Data

TABLE OF CONTENTS

SECTION ONE

	Page
FLOW CHART OF CASE REFERRALS	i
Table 1 Number and Percent of Intake cases by County of Jurisdiction and by Area: FY 1999 - FY 2001	1
Table 2 Manner of Handling Referrals at Intake by Jurisdiction and by Area: FY 2001	2
Table 3 Rank Order of Formal Cases by County of Jurisdiction: FY 2001	3
Table 4 Number and Percent of Total Intake Cases by Race: FY 2001	3
Table 5 Intake Cases by Race and by County of Jurisdiction: FY 2001	4
Table 6 Manner of Handling Intake Cases by Race and County of Jurisdiction: FY 2001	5
Table 6 Manner of Handling Intake Cases by Race and County of Jurisdiction: FY 2001	6
Table 7 Number and Percent of Total Intake Cases by Gender: FY 2001	7
Table 8 Manner of Handling Intake Cases by Gender and County of Jurisdiction: FY 2001	8
Table 9 Intake Cases by Race, Gender and County of Jurisdiction: FY 2001	9
Table 10 Number and Percent of Total Intake Cases by Age: FY 2001	10
Table 11 Intake Cases by Age and County of Jurisdiction: FY 2001	11
Table 12 Intake Cases by Age and County of Jurisdiction for African-American Youth: FY 2001	12
Table 13 Intake Cases by Age and County of Jurisdiction for Caucasian Youth: FY 2001	13
Table 14 Intake Cases by Age and County of Jurisdiction for All Other Youth: FY 2001	14
Table 15 Intake Cases by Age and County of Jurisdiction for Males: FY 2001	15
Table 16 Intake Cases by Age and County of Jurisdiction for Females: FY 2001	16
Table 17 Number & Percent of Total Intake Cases by Referral Source: FY 2001	17
Table 18 Intake Cases by Referral Source & County of Jurisdiction: FY 2001	17
Table 19 Intakes Cases - Offense by Offense Type: FY 1999 - FY 2001	18
Table 20 Intake Cases by Alleged Offenses & County of Jurisdiction: FY 2001	19

Table 20	Intake Cases by Alleged Offenses & County of Jurisdiction: FY 2001.....	20
Table 20	Intake Cases by Alleged Offenses & County of Jurisdiction: FY 2001.....	21
Table 21	Intake Cases by alleged Offenses & County of Jurisdiction for African-American Youth: FY 2001	22
Table 21	Intake Cases by Alleged Offenses & County of Jurisdiction for African-American Youth: FY 2001	23
Table 21	Intake Cases by Alleged Offenses & County of Jurisdiction for African-American Youth: FY 2001	24
Table 22	Intake Cases by Alleged Offenses & County of Jurisdiction for Caucasian Youth: FY 2001	25
Table 22	Intake Cases by Alleged Offenses & County of Jurisdiction for Caucasian Youth: FY 2001	26
Table 22	Intake Cases by Alleged Offenses & County of Jurisdiction for Caucasian Youth: FY 2001	27
Table 23	Intake Cases by Alleged Offenses and County of Jurisdiction for All Other Youth: FY 2001.....	28
Table 23	Intake Cases by Alleged Offenses and County of Jurisdiction for All Other Youth : FY 2001.....	29
Table 23	Intake Cases by Alleged Offenses and County of Jurisdiction for All Other Youth: FY 2001.....	30
Table 24	Intake Cases by Alleged Offenses and County of Jurisdiction for Males: FY 2001.....	31
Table 24	Intake Cases by Alleged Offenses and County of Jurisdiction for Males : FY 2001.....	32
Table 24	Intake Cases by Alleged Offenses and County of Jurisdiction for Males : FY 2001.....	33
Table 25	Intake Cases by Alleged Offenses and County of Jurisdiction for Females: FY 2001	34
Table 25	Intake Cases by Alleged Offenses and County of Jurisdiction for Females : FY 2001	35
Table 25	Intake Cases by Alleged Offenses and County of Jurisdiction for Females: FY 2001	36
Table 26	Alleged Offense Rates Per 1,000 Population by Offense Category & County of Jurisdiction: FY 2001	37
Table 27	Rates of Total and Delinquent Referrals Per 1,000 Youth Population: FY 2001.....	38
Table 28	Court Disposition of Formalized Cases by Gender: FY 2001.....	39
Table 29	Court Disposition of Formalized Cases by Race: FY 2001	40

Flowchart of Case Referrals in the Maryland Juvenile Justice System
FY 2001

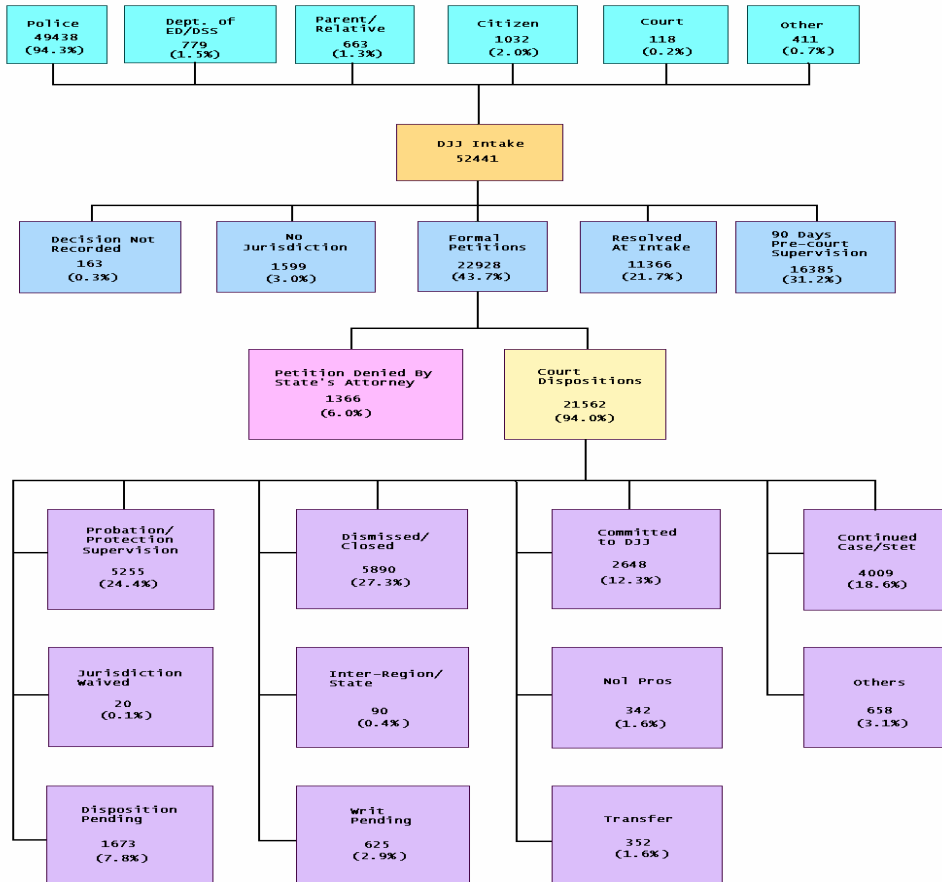


Table 1
Number and Percent of Intake Cases by County of Jurisdiction and by Area
FY1999 - FY2001

Area	1999 Cases	Percent of Cases	2000 Cases	Percent of Cases	2001 Cases	Percent of Cases	Percent Change 99 to '01
1. Baltimore City	12088	21.9	10742	19.6	9600	18.3	-10.6%
Area 1 Total	12088	21.9	10742	19.6	9600	18.3	-10.6%
2. Baltimore	7558	13.7	8356	15.2	7972	15.2	-4.6%
Carroll	1285	2.3	1560	2.8	1291	2.5	-17.2%
Harford	2085	3.8	2080	3.8	1812	3.5	-12.9%
Howard	1553	2.8	1601	2.9	2353	4.5	47.0%
Area 2 Total	12481	22.6	13597	24.8	13428	25.6	-1.2%
3. Allegany	1132	2.1	1197	2.2	1085	2.1	-9.4%
Frederick	2093	3.8	2321	4.2	1842	3.5	-20.6%
Garrett	227	0.4	263	0.5	213	0.4	-19.0%
Montgomery	3951	7.2	4213	7.7	3450	6.6	-18.1%
Washington	1332	2.4	1355	2.5	1393	2.7	2.8%
Area 3 Total	8735	15.8	9349	17.0	7983	15.2	-14.6%
4. Caroline	610	1.1	646	1.2	548	1.0	-15.2%
Cecil	1097	2.0	973	1.8	977	1.9	0.4%
Dorchester	569	1.0	675	1.2	644	1.2	-4.6%
Kent	318	0.6	278	0.5	405	0.8	45.7%
Queen Anne's	456	0.8	401	0.7	543	1.0	35.4%
Somerset	273	0.5	254	0.5	271	0.5	6.7%
Talbot	659	1.2	466	0.8	489	0.9	4.9%
Wicomico	1580	2.9	2048	3.7	1787	3.4	-12.7%
Worcester	1405	2.5	1172	2.1	1765	3.4	50.6%
Area 4 Total	6967	12.6	6913	12.6	7429	14.2	7.5%
5. Anne Arundel	5686	10.3	5200	9.5	5487	10.5	5.5%
Calvert	935	1.7	645	1.2	868	1.7	34.6%
Charles	1655	3.0	1829	3.3	1614	3.1	-11.8%
Prince George's	5601	10.2	5418	9.9	4914	9.4	-9.3%
St. Mary's	1002	1.8	1111	2.0	1070	2.0	-3.7%
Area 5 Total	14879	27.0	14203	25.9	13953	26.6	-1.8%
Out-of-State	0	0.0	44	0.1	48	0.1	0.0%
State Total	55150	100.0	54848	100.0	52441	100.0	-4.4%

Table 2
Manner of Handling Referrals at Intake by Jurisdiction and by Area
FY 2001

Area	Formal Petition	Percent Formal Cases	90 Days Pre-Court Supervision	Percent 90 Days Pre-Court Supervision	Resolved at Intake	Percent Resolved at Intake	No Jurisdiction	Percent No Jurisdiction	Decision not Recorded	Percent Decision Not Recorded	Juris Total	Percent of Cases
1. Baltimore City	7486	78.0	1440	15.0	441	4.6	224	2.3	9	0.1	9600	100.0
Area 1 Total	7486	78.0	1440	15.0	441	4.6	224	2.3	9	0.1	9600	100.0
2. Baltimore	4168	52.3	1673	21.0	1991	25.0	123	1.5	17	0.2	7972	100.0
Carroll	416	32.2	594	46.0	240	18.6	28	2.2	13	1.0	1291	100.0
Harford	617	34.1	641	35.4	508	28.0	45	2.5	1	0.1	1812	100.0
Howard	660	28.0	874	37.1	420	17.8	379	16.1	20	0.8	2353	100.0
Area 2 Total	5861	43.6	3782	28.2	3159	23.5	575	4.3	51	0.4	13428	100.0
3. Allegany	305	28.1	493	45.4	245	22.6	40	3.7	2	0.2	1085	100.0
Frederick	695	37.7	798	43.3	264	14.3	84	4.6	1	0.1	1842	100.0
Garrett	62	29.1	89	41.8	51	23.9	11	5.2	0	0.0	213	100.0
Montgomery	1520	44.1	976	28.3	899	26.1	17	0.5	38	1.1	3450	100.0
Washington	390	28.0	607	43.6	358	25.7	38	2.7	0	0.0	1393	100.0
Area 3 Total	2972	37.2	2963	37.1	1817	22.8	190	2.4	41	0.5	7983	100.0
4. Caroline	112	20.4	192	35.0	210	38.3	34	6.2	0	0.0	548	100.0
Cecil	370	37.9	340	34.8	221	22.6	43	4.4	3	0.3	977	100.0
Dorchester	133	20.7	200	31.1	252	39.1	54	8.4	5	0.8	644	100.0
Kent	117	28.9	26	6.4	237	58.5	25	6.2	0	0.0	405	100.0
Queen Anne's	117	21.5	125	23.0	253	46.6	46	8.5	2	0.4	543	100.0
Somerset	88	32.5	114	42.1	58	21.4	11	4.1	0	0.0	271	100.0
Talbot	176	36.0	133	27.2	152	31.1	26	5.3	2	0.4	489	100.0
Wicomico	301	16.8	929	52.0	498	27.9	54	3.0	5	0.3	1787	100.0
Worcester	312	17.7	932	52.8	395	22.4	115	6.5	11	0.6	1765	100.0
Area 4 Total	1726	23.2	2991	40.3	2276	30.6	408	5.5	28	0.4	7429	100.0
5. Anne Arundel	1916	34.9	1952	35.6	1526	27.8	86	1.6	7	0.1	5487	100.0
Calvert	437	50.3	202	23.3	175	20.2	37	4.3	17	2.0	868	100.0
Charles	414	25.7	903	55.9	287	17.8	10	0.6	0	0.0	1614	100.0
Prince George's	1822	37.1	1715	34.9	1302	26.5	69	1.4	6	0.1	4914	100.0
St. Mary's	253	23.6	436	40.7	379	35.4	0	0.0	2	0.2	1070	100.0
Area 5 Total	4842	34.7	5208	37.3	3669	26.3	202	1.4	32	0.2	13953	100.0
Out of State	41	85.4	1	2.1	4	8.3	0	0.0	2	4.2	48	100.0
Out of State Total	41	85.4	1	2.1	4	8.3	0	0.0	2	4.2	48	100.0
Total	22928	43.7	16385	31.2	11366	21.7	1599	3.0	163	0.3	52441	100.0

Table 3
Rank Order of Formal Cases by County of Jurisdiction
FY 2001

Jurisdictions Area	Formal	% Formal Cases
Out of State	41	85.4
Baltimore City	7486	78.0
Baltimore Co.	4168	52.3
Calvert	437	50.3
Montgomery	1520	44.1
Cecil	370	37.9
Frederick	695	37.7
Prince George's	1822	37.1
Talbot	176	36.0
Anne Arundel	1916	34.9
Harford	617	34.1
Somerset	88	32.5
Carroll	416	32.2
Garrett	62	29.1
Kent	117	28.9
Allegany	305	28.1
Howard	660	28.0
Washington	390	28.0
Charles	414	25.7
St. Mary's	253	23.6
Queen Anne's	117	21.5
Dorchester	133	20.7
Caroline	112	20.4
Worcester	312	17.7
Wicomico	301	16.8

Table 4
Number and Percent of Intake Cases by Race

FY 2001

Manner of Handling Cases	African-American	% African-American	Caucasian	% Caucasian	Other	% Other	Total	% Total
Formal	13836	54.4	8408	33.1	684	43.8	22928	43.7
90 Days Pre-Court Supervision	5997	23.6	9946	39.1	442	28.3	16385	31.2
Resolved at Intake	5549	21.8	6993	27.5	423	27.1	12965	24.7
Decision not Recorded	72	0.3	80	0.3	11	0.7	163	0.3
State Total	25454	100.0	25427	100.0	1560	100.0	52441	100.0

Table 5
Intake Cases by Race and by County of Jurisdiction
FY 2001

Area	African American	Percent African American	Caucasian	Percent Caucasian	Other	Percent other	Juris Total
1. Baltimore City	8580	89.4	906	9.4	114	1.2	9600
Area 1 Total	8580	89.4	906	9.4	114	1.2	9600
2. Baltimore	3883	48.7	3977	49.9	112	1.4	7972
Carroll	73	5.7	1207	93.5	11	0.9	1291
Harford	369	20.4	1410	77.8	33	1.8	1812
Howard	765	32.5	1466	62.3	122	5.2	2353
Area 2 Total	5090	37.9	8060	60.0	278	2.1	13428
3. Allegany	83	7.6	992	91.4	10	0.9	1085
Frederick	406	22.0	1387	75.3	49	2.7	1842
Garrett	12	5.6	201	94.4	0	0.0	213
Montgomery	1593	46.2	1276	37.0	581	16.8	3450
Washington	208	14.9	1133	81.3	52	3.7	1393
Area 3 Total	2302	28.8	4989	62.5	692	8.7	7983
4. Caroline	179	32.7	361	65.9	8	1.5	548
Cecil	81	8.3	889	91.0	7	0.7	977
Dorchester	377	58.5	265	41.1	2	0.3	644
Kent	188	46.4	210	51.9	7	1.7	405
Queen Anne's	104	19.2	436	80.3	3	0.6	543
Somerset	172	63.5	99	36.5	0	0.0	271
Talbot	186	38.0	296	60.5	7	1.4	489
Wicomico	997	55.8	770	43.1	20	1.1	1787
Worcester	284	16.1	1437	81.4	44	2.5	1765
Area 4 Total	2568	34.6	4763	64.1	98	1.3	7429
5. Anne Arundel	1662	30.3	3711	67.6	114	2.1	5487
Calvert	159	18.3	695	80.1	14	1.6	868
Charles	757	46.9	837	51.9	20	1.2	1614
Prince George's	4003	81.5	697	14.2	214	4.4	4914
St. Mary's	320	29.9	737	68.9	13	1.2	1070
Area 5 Total	6901	49.5	6677	47.9	375	2.7	13953
Out of State	13	27.1	32	66.7	3	6.3	48
Out of State Total	13	27.1	32	66.7	3	6.3	48
Total	25454	48.5	25427	48.5	1560	3.0	52441

Table 6
Manner of Handling Referrals at Intake by Race and County of Jurisdiction
FY 2001

Area	African-American					Caucasian				
	Formal	Informal	Resolved at Intake	Decision Not Recorded	Total	Formal	Informal	Resolved at Intake	Decision Not Recorded	Total
1. Baltimore City	6772	1233	567	8	8580	636	184	85	1	906
Area 1 Total	6772	1233	567	8	8580	636	184	85	1	906
2. Baltimore	2131	627	1116	9	3883	1983	1017	970	7	3977
Carroll	34	17	18	4	73	380	573	245	9	1207
Harford	144	91	134	0	369	463	542	405	0	1410
Howard	254	249	256	6	765	357	594	502	13	1466
Area 2 Total	2563	984	1524	19	5090	3183	2726	2122	29	8060
3. Allegany	33	23	27	0	83	271	464	255	2	992
Frederick	219	101	85	1	406	458	683	246	0	1387
Garrett	6	1	5	0	12	56	88	57	0	201
Montgomery	749	383	439	22	1593	449	456	361	10	1276
Washington	83	59	66	0	208	296	531	306	0	1133
Area 3 Total	1090	567	622	23	2302	1530	2222	1225	12	4989
4. Caroline	51	53	75	0	179	59	136	166	0	361
Cecil	45	18	18	0	81	322	319	245	3	889
Dorchester	93	98	181	5	377	40	101	124	0	265
Kent	68	9	111	0	188	49	17	144	0	210
Queen Anne's	26	24	54	0	104	91	101	242	2	436
Somerset	59	54	59	0	172	29	60	10	0	99
Talbot	76	43	66	1	186	99	88	109	0	296
Wicomico	195	450	349	3	997	105	469	194	2	770
Worcester	118	83	82	1	284	192	816	419	10	1437
Area 4 Total	731	832	995	10	2568	986	2107	1653	17	4763
5. Anne Arundel	706	468	485	3	1662	1175	1445	1087	4	3711
Calvert	87	32	37	3	159	342	169	171	13	695
Charles	256	433	68	0	757	153	462	222	0	837
Prince George's	1525	1347	1126	5	4003	222	298	176	1	697
St. Mary's	95	101	124	0	320	154	332	249	2	737
Area 5 Total	2669	2381	1840	11	6901	2046	2706	1905	20	6677
Out of State	11	0	1	1	13	27	1	3	1	32
Out of State Total	11	0	1	1	13	27	1	3	1	32
Total	13836	5997	5549	72	25454	8408	9946	6993	80	25427

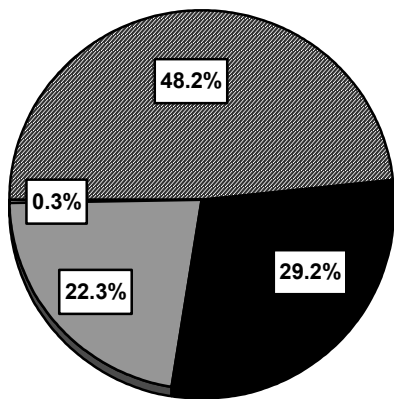
**Table 6
Manner of Handling Referrals at Intake by Race and County of Jurisdiction**

Area	Other				Total	Juris Tot
	Formal	Informal	Resolved at Intake	Decision Not Recorded		
1. Baltimore City	78	23	13	0	114	9600
Area 1 Total	78	23	13	0	114	9600
2. Baltimore	54	29	28	1	112	7972
Carroll	2	4	5	0	11	1291
Harford	10	8	14	1	33	1812
Howard	49	31	41	1	122	2353
Area 2 Total	115	72	88	3	278	13428
3. Allegany	1	6	3	0	10	1085
Frederick	18	14	17	0	49	1842
Garrett	0	0	0	0	0	213
Montgomery	322	137	116	6	581	3450
Washington	11	17	24	0	52	1393
Area 3 Total	352	174	160	6	692	7983
4. Caroline	2	3	3	0	8	548
Cecil	3	3	1	0	7	977
Dorchester	0	1	1	0	2	644
Kent	0	0	7	0	7	405
Queen Anne's	0	0	3	0	3	543
Somerset	0	0	0	0	0	271
Talbot	1	2	3	1	7	489
Wicomico	1	10	9	0	20	1787
Worcester	2	33	9	0	44	1765
Area 4 Total	9	52	36	1	98	7429
5. Anne Arundel	35	39	40	0	114	5487
Calvert	8	1	4	1	14	868
Charles	5	8	7	0	20	1614
Prince George's	75	70	69	0	214	4914
St. Mary's	4	3	6	0	13	1070
Area 5 Total	127	121	126	1	375	13953
Out of State	3	0	0	0	3	48
Out of State Total	3	0	0	0	3	48
Total	684	442	423	11	1560	52441

**Table 7
Number and Percent of Total Cases by Gender
FY 2001**

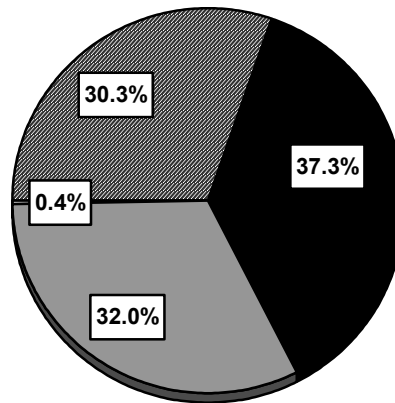
Manner of Handling Cases	Males	Percent Males	Females	Percent Females	Total
Formal	18951	48.2%	3977	30.3%	22928
90 Days Pre-Court Supervision	11480	29.2%	4905	37.3%	16385
Resolved at Intake	8757	22.3%	4208	32.0%	12965
Decision not recorded	111	0.3%	52	0.4%	163
State Total	39299	100.0%	13142	100.0%	52441

Males



Formal
 Resolved
 90 Days Pre-Court
 Decision not recorded

Females



Formal
 Resolved
 90 Days Pre-Court
 Decision not recorded

Table 8
Manner of Handling Intake Cases by Gender and County of Jurisdiction
FY 2001

Area	Male						Female						Juris Total
	Formal	Informal	Resolved at Intake	Decision not Recorded	Total	% Total	Formal	Informal	Resolved at Intake	Decision not Recorded	Total	%Total	
1. Baltimore City	6313	1047	489	9	7858	81.9	1173	393	176	0	1742	18.1	9600
Area 1 Total	6313	1047	489	9	7858	81.9	1173	393	176	0	1742	18.1	9600
2. Baltimore	3233	1136	1379	8	5756	72.2	935	537	735	9	2216	27.8	7972
Carroll	326	420	181	10	937	72.6	90	174	87	3	354	27.4	1291
Harford	526	424	402	0	1352	74.6	91	217	151	1	460	25.4	1812
Howard	535	594	562	15	1706	72.5	125	280	237	5	647	27.5	2353
Area 2 Total	4620	2574	2524	33	9751	72.6	1241	1208	1210	18	3677	27.4	13428
3. Allegany	237	305	166	1	709	65.3	68	188	119	1	376	34.7	1085
Frederick	549	530	204	1	1284	69.7	146	268	144	0	558	30.3	1842
Garrett	52	66	43	0	161	75.6	10	23	19	0	52	24.4	213
Montgomery	1334	755	669	27	2785	80.7	186	221	247	11	665	19.3	3450
Washington	341	403	242	0	986	70.8	49	204	154	0	407	29.2	1393
Area 3 Total	2513	2059	1324	29	5925	74.2	459	904	683	12	2058	25.8	7983
4. Caroline	99	147	158	0	404	73.7	13	45	86	0	144	26.3	548
Cecil	297	238	172	3	710	72.7	73	102	92	0	267	27.3	977
Dorchester	114	147	199	3	463	71.9	19	53	107	2	181	28.1	644
Kent	95	17	180	0	292	72.1	22	9	82	0	113	27.9	405
Queen Anne's	102	95	206	2	405	74.6	15	30	93	0	138	25.4	543
Somerset	79	75	45	0	199	73.4	9	39	24	0	72	26.6	271
Talbot	147	88	117	1	353	72.2	29	45	61	1	136	27.8	489
Wicomico	258	651	349	4	1262	70.6	43	278	203	1	525	29.4	1787
Worcester	271	635	338	8	1252	70.9	41	297	172	3	513	29.1	1765
Area 4 Total	1462	2093	1764	21	5340	71.9	264	898	920	7	2089	28.1	7429
5. Anne Arundel	1520	1377	1111	5	4013	73.1	396	575	501	2	1474	26.9	5487
Calvert	358	147	106	6	617	71.1	79	55	106	11	251	28.9	868
Charles	336	617	199	0	1152	71.4	78	286	98	0	462	28.6	1614
Prince George's	1570	1276	1037	6	3889	79.1	252	439	334	0	1025	20.9	4914
St. Mary's	228	289	201	1	719	67.2	25	147	178	1	351	32.8	1070
Area 5 Total	4012	3706	2654	18	10390	74.5	830	1502	1217	14	3563	25.5	13953
Out of State	31	1	2	1	35	72.9	10	0	2	1	13	27.1	48
Out of State Total	31	1	2	1	35	72.9	10	0	2	1	13	27.1	48
Total	18951	11480	8757	111	39299	74.9	3977	4905	4208	52	13142	25.1	52441

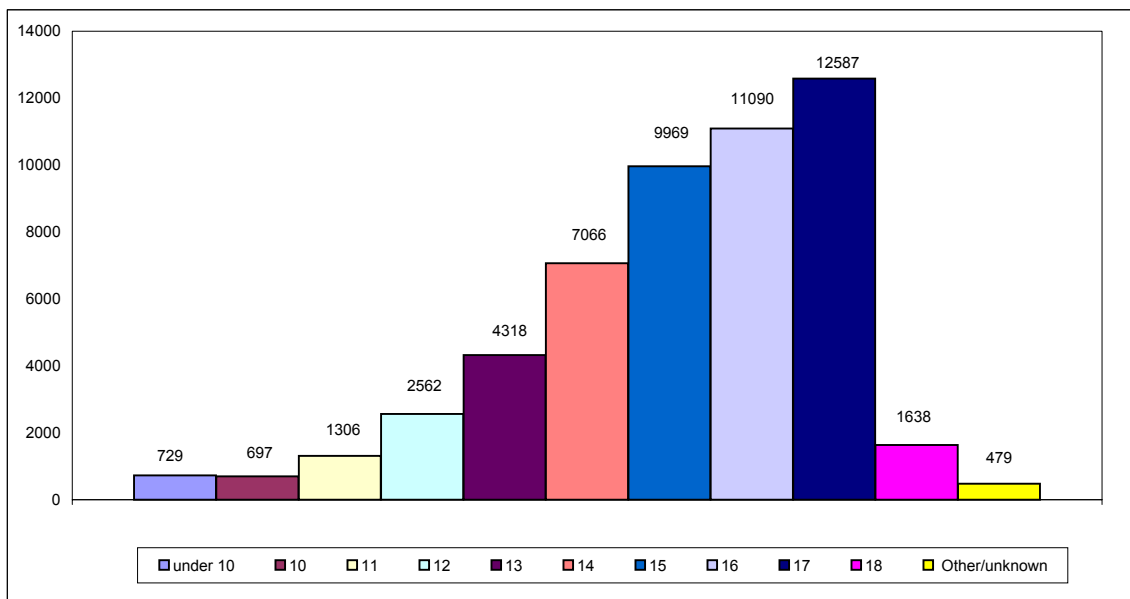
Table 9
Intake Cases by Race, Gender and County of Jurisdiction
FY 2001

Area	African American					Caucasian					Other					Total
	Male	Percent Total	Female	Percent Total	Juris Total	Male	Percent Total	Female	Percent Total	Juris Total	Male	Percent Total	Female	Percent Total	Juris Total	
1. Baltimore City	7099	73.9	1481	15.4	8580	692	7.2	214	2.2	906	67	0.7	47	0.5	114	9600
Area 1	7099	73.9	1481	15.4	8580	692	7.2	214	2.2	906	67	0.7	47	0.5	114	9600
2. Baltimore	2724	34.2	1159	14.5	3883	2941	36.9	1036	13.0	3977	91	1.1	21	0.3	112	7972
Carroll	53	4.1	20	1.5	73	877	67.9	330	25.6	1207	7	0.5	4	0.3	11	1291
Harford	265	14.6	104	5.7	369	1065	58.8	345	19.0	1410	22	1.2	11	0.6	33	1812
Howard	560	23.8	205	8.7	765	1045	44.4	421	17.9	1466	101	4.3	21	0.9	122	2353
Area 2	3602	26.8	1488	11.1	5090	5928	44.1	2132	15.9	8060	221	1.6	57	0.4	278	13428
3. Allegany	67	6.2	16	1.5	83	635	58.5	357	32.9	992	7	0.6	3	0.3	10	1085
Frederick	300	16.3	106	5.8	406	953	51.7	434	23.6	1387	31	1.7	18	1.0	49	1842
Garrett	12	5.6	0	0.0	12	149	70.0	52	24.4	201	0	0.0	0	0.0	0	213
Montgomery	1301	37.7	292	8.5	1593	1047	30.3	229	6.6	1276	437	12.7	144	4.2	581	3450
Washington	154	11.1	54	3.9	208	801	57.5	332	23.8	1133	31	2.2	21	1.5	52	1393
Area 3 Total	1834	23.0	468	5.9	2302	3585	44.9	1404	17.6	4989	506	6.3	186	2.3	692	7983
4. Caroline	143	26.1	36	6.6	179	254	46.4	107	19.5	361	7	1.3	1	0.2	8	548
Cecil	61	6.2	20	2.0	81	644	65.9	245	25.1	889	5	0.5	2	0.2	7	977
Dorchester	255	39.6	122	18.9	377	206	32.0	59	9.2	265	2	0.3	0	0.0	2	644
Kent	142	35.1	46	11.4	188	145	35.8	65	16.0	210	5	1.2	2	0.5	7	405
Queen Anne's	76	14.0	28	5.2	104	328	60.4	108	19.9	436	1	0.2	2	0.4	3	543
Somerset	130	48.0	42	15.5	172	69	25.5	30	11.1	99	0	0.0	0	0.0	0	271
Talbot	150	30.7	36	7.4	186	200	40.9	96	19.6	296	3	0.6	4	0.8	7	489
Wicomico	704	39.4	293	16.4	997	544	30.4	226	12.6	770	14	0.8	6	0.3	20	1787
Worcester	222	12.6	62	3.5	284	999	56.6	438	24.8	1437	31	1.8	13	0.7	44	1765
Area 4 Total	1883	25.3	685	9.2	2568	3389	45.6	1374	18.5	4763	68	0.9	30	0.4	98	7429
5. Anne Arundel	1161	21.2	501	9.1	1662	2754	50.2	957	17.4	3711	98	1.8	16	0.3	114	5487
Calvert	122	14.1	37	4.3	159	485	55.9	210	24.2	695	10	1.2	4	0.5	14	868
Charles	566	35.1	191	11.8	757	570	35.3	267	16.5	837	16	1.0	4	0.2	20	1614
Prince George's	3164	64.4	839	17.1	4003	547	11.1	150	3.1	697	178	3.6	36	0.7	214	4914
St. Mary's	207	19.3	113	10.6	320	509	47.6	228	21.3	737	3	0.3	10	0.9	13	1070
Area 5 Total	5220	37.4	1681	12.0	6901	4865	34.9	1812	13.0	6677	305	2.2	70	0.5	375	13953
Out of State	7	14.6	6	12.5	13	25	52.1	7	14.6	32	3	6.3	0	0.0	3	48
Out of State Total	7	14.6	6	12.5	13	25	52.1	7	14.6	32	3	6.3	0	0.0	3	48
Total	19645	37.5	5809	11.1	25454	18484	35.2	6943	13.2	25427	1170	2.2	390	0.7	1560	52441

Table 10
Number and Percent of Total Intake Cases by Age

Age of Youth	1999 Cases	Percent Cases	2000 Cases	Percent Cases	2001 Cases	Percent Cases	% Change '00 to '01
Under 10	896	1.6	1188	2.2	729	1.4	-38.6
ten	879	1.6	750	1.4	697	1.3	-7.1
eleven	1467	2.7	1475	2.7	1306	2.5	-11.5
twelve	2749	5.0	2716	5.0	2562	4.9	-5.7
thirteen	4850	8.8	4549	8.3	4318	8.2	-5.1
fourteen	7416	13.4	7423	13.5	7066	13.5	-4.8
fifteen	10183	18.5	10013	18.3	9969	19.0	-0.4
sixteen	11886	21.6	11622	21.2	11090	21.1	-4.6
seventeen	13241	24.0	13193	24.1	12587	24.0	-4.6
eighteen	1389	2.5	1373	2.5	1638	3.1	19.3
other/unknown	194	0.4	546	1.0	479	0.9	-12.3
State Total	55150	100.0	54848	100.0	52441	100.0	-4.4

Total Intake Cases by Age
FY 2001



**Table 11
Intake Cases by Age and County of Jurisdiction
FY 2001**

Area	<10	10	11	12	13	14	15	16	17	18	Over 18	Age/ Unknown	Total
1. Baltimore City	121	122	234	518	918	1426	1922	1877	2061	275	23	103	9600
Area 1 Total	121	122	234	518	918	1426	1922	1877	2061	275	23	103	9600
2. Baltimore	157	129	247	476	730	1134	1495	1668	1676	238	6	16	7972
Carroll	11	25	24	42	86	158	253	304	305	37	4	42	1291
Harford	14	22	38	87	128	236	289	419	530	40	3	6	1812
Howard	19	13	37	94	155	266	415	527	687	96	5	39	2353
Area 2 Total	201	189	346	699	1099	1794	2452	2918	3198	411	18	103	13428
3. Allegany	16	14	21	61	83	171	194	219	288	18	0	0	1085
Frederick	19	16	32	84	137	230	387	396	492	39	1	9	1842
Garrett	4	3	7	7	21	33	28	63	41	5	0	1	213
Montgomery	17	26	34	112	226	391	561	779	1017	260	13	14	3450
Washington	22	14	38	79	141	230	235	259	342	18	1	14	1393
Area 3 Total	78	73	132	343	608	1055	1405	1716	2180	340	15	38	7983
4. Caroline	7	4	22	27	56	52	131	101	137	11	0	0	548
Cecil	17	18	25	77	101	140	162	207	208	12	1	9	977
Dorchester	24	19	23	41	80	109	122	111	90	14	1	10	644
Kent	8	8	13	14	13	65	106	85	90	3	0	0	405
Queen Anne's	4	12	15	17	38	52	120	121	144	14	2	4	543
Somerset	4	7	7	11	29	49	55	56	49	2	2	0	271
Talbot	26	7	13	25	27	68	77	107	119	18	0	2	489
Wicomico	28	34	80	141	177	248	395	348	300	29	3	4	1787
Worcester	3	8	15	21	56	136	251	364	777	131	1	2	1765
Area 4 Total	121	117	213	374	577	919	1419	1500	1914	234	10	31	7429
5. Anne Arundel	72	90	184	268	467	756	1059	1181	1284	101	8	17	5487
Calvert	11	10	20	41	72	104	168	181	216	22	0	23	868
Charles	31	25	66	78	130	181	333	358	368	40	3	1	1614
Prince George's	76	53	91	197	377	668	977	1101	1099	190	8	77	4914
St. Mary's	18	18	20	43	64	155	228	248	252	24	0	0	1070
Area 5 Total	208	196	381	627	1110	1864	2765	3069	3219	377	19	118	13953
Out of State	0	0	0	1	6	8	6	10	15	1	1	0	48
Out of State Total	0	0	0	1	6	8	6	10	15	1	1	0	48
Total	729	697	1306	2562	4318	7066	9969	11090	12587	1638	86	393	52441

Table 12
Intake Cases by Age and County of Jurisdiction for African-American Youth
FY 2001

Area	<10	10	11	12	13	14	15	16	17	18	Over 18	Age/ Unknown	Total
1. Baltimore City	97	107	203	471	827	1280	1741	1703	1815	238	21	77	8580
Area 1 Total	97	107	203	471	827	1280	1741	1703	1815	238	21	77	8580
2. Baltimore	92	72	157	284	451	628	711	722	667	94	1	4	3883
Carroll	2	1	1	1	6	7	19	21	9	2	1	3	73
Harford	5	10	11	24	43	43	59	71	94	8	1	0	369
Howard	11	7	26	59	86	116	127	152	154	15	1	11	765
Area 2 Total	110	90	195	368	586	794	916	966	924	119	4	18	5090
3. Allegany	2	0	2	14	5	13	16	15	15	1	0	0	83
Frederick	4	2	9	23	29	49	94	105	83	7	0	1	406
Garrett	0	1	0	0	1	0	5	2	1	2	0	0	12
Montgomery	13	23	25	69	142	210	286	336	388	86	9	6	1593
Washington	7	3	3	18	22	45	31	41	37	1	0	0	208
Area 3 Total	26	29	39	124	199	317	432	499	524	97	9	7	2302
4. Caroline	2	1	11	10	17	28	35	26	46	3	0	0	179
Cecil	2	3	1	13	12	7	11	13	18	1	0	0	81
Dorchester	16	14	18	28	41	72	79	52	45	6	0	6	377
Kent	6	8	11	9	4	30	46	39	35	0	0	0	188
Queen Anne's	1	4	4	5	4	14	24	22	24	1	0	1	104
Somerset	4	6	3	8	21	36	42	31	19	2	0	0	172
Talbot	23	5	10	15	11	35	24	29	26	7	0	1	186
Wicomico	18	27	64	107	109	152	228	155	123	12	0	2	997
Worcester	1	2	12	11	13	21	40	71	90	23	0	0	284
Area 4 Total	73	70	134	206	232	395	529	438	426	55	0	10	2568
5. Anne Arundel	27	38	82	119	166	234	268	358	338	25	2	5	1662
Calvert	3	5	6	14	19	23	28	23	31	4	0	3	159
Charles	19	19	36	46	69	85	136	157	166	24	0	0	757
Prince George's	63	41	85	179	334	565	807	877	853	138	4	57	4003
St. Mary's	6	5	14	14	25	55	86	49	63	3	0	0	320
Area 5 Total	118	108	223	372	613	962	1325	1464	1451	194	6	65	6901
Out of State	0	0	0	0	2	2	2	3	3	0	1	0	13
Out of State Total	0	0	0	0	2	2	2	3	3	0	1	0	13
Total	424	404	794	1541	2459	3750	4945	5073	5143	703	41	177	25454

Table 13
Intake Cases by Age and County of Jurisdiction for Caucasian Youth
FY 2001

Area	<10	10	11	12	13	14	15	16	17	18	Over 18	Age/ Unknown	Total
1. Baltimore City	23	14	29	39	82	131	155	162	228	33	1	9	906
Area 1 Total	23	14	29	39	82	131	155	162	228	33	1	9	906
2. Baltimore	62	57	88	186	270	492	761	922	984	139	5	11	3977
Carroll	8	23	23	41	79	149	233	281	293	35	3	39	1207
Harford	8	12	26	62	82	189	225	342	426	31	2	5	1410
Howard	7	5	10	32	66	140	269	344	488	77	3	25	1466
Area 2 Total	85	97	147	321	497	970	1488	1889	2191	282	13	80	8060
3. Allegany	14	14	19	47	78	156	175	201	271	17	0	0	992
Frederick	15	14	23	60	103	177	273	286	395	32	1	8	1387
Garrett	4	2	7	7	20	33	23	61	40	3	0	1	201
Montgomery	2	3	5	32	52	135	200	336	417	89	2	3	1276
Washington	14	10	31	57	106	175	200	211	299	17	1	12	1133
Area 3 Total	49	43	85	203	359	676	871	1095	1422	158	4	24	4989
4. Caroline	5	3	11	15	39	24	95	73	89	7	0	0	361
Cecil	14	15	24	64	88	133	151	191	189	10	1	9	889
Dorchester	8	5	5	12	39	37	42	59	45	8	1	4	265
Kent	1	0	2	5	8	33	59	44	55	3	0	0	210
Queen Anne's	3	8	11	12	34	38	96	98	118	13	2	3	436
Somerset	0	1	4	3	8	13	13	25	30	0	2	0	99
Talbot	3	2	3	10	16	33	53	74	91	11	0	0	296
Wicomico	9	7	14	32	66	95	160	192	174	16	3	2	770
Worcester	1	6	2	10	40	114	204	286	667	105	1	1	1437
Area 4 Total	44	47	76	163	338	520	873	1042	1458	173	10	19	4763
5. Anne Arundel	43	51	98	144	294	510	769	798	913	76	6	9	3711
Calvert	7	5	14	26	53	80	137	156	182	18	0	17	695
Charles	12	6	30	32	60	94	193	196	195	16	3	0	837
Prince George's	7	7	4	12	35	71	126	183	197	46	0	9	697
St. Mary's	12	13	6	29	38	100	139	192	187	21	0	0	737
Area 5 Total	81	82	152	243	480	855	1364	1525	1674	177	9	35	6677
Out of State	0	0	0	1	4	6	4	6	10	1	0	0	32
Out of State Total	0	0	0	1	4	6	4	6	10	1	0	0	32
Total	282	283	489	970	1760	3158	4755	5719	6983	824	37	167	25427

Table 14
Intake Cases by Age and County of Jurisdiction for Other Youth
FY 2001

Area	<10	10	11	12	13	14	15	16	17	18	Over 18	Age/ Unknown	Total
1. Baltimore City	1	1	2	8	9	15	26	12	18	4	1	17	114
Area 1 Total	1	1	2	8	9	15	26	12	18	4	1	17	114
2. Baltimore	3	0	2	6	9	14	23	24	25	5	0	1	112
Carroll	1	1	0	0	1	2	1	2	3	0	0	0	11
Harford	1	0	1	1	3	4	5	6	10	1	0	1	33
Howard	1	1	1	3	3	10	19	31	45	4	1	3	122
Area 2 Total	6	2	4	10	16	30	48	63	83	10	1	5	278
3. Allegany	0	0	0	0	0	2	3	3	2	0	0	0	10
Frederick	0	0	0	1	5	4	20	5	14	0	0	0	49
Montgomery	2	0	4	11	32	46	75	107	212	85	2	5	581
Washington	1	1	4	4	13	10	4	7	6	0	0	2	52
Area 3 Total	3	1	8	16	50	62	102	122	234	85	2	7	692
4. Caroline	0	0	0	2	0	0	1	2	2	1	0	0	8
Cecil	1	0	0	0	1	0	0	3	1	1	0	0	7
Dorchester	0	0	0	1	0	0	1	0	0	0	0	0	2
Kent	1	0	0	0	1	2	1	2	0	0	0	0	7
Queen Anne's	0	0	0	0	0	0	0	1	2	0	0	0	3
Talbot	0	0	0	0	0	0	0	4	2	0	0	1	7
Wicomico	1	0	2	2	2	1	7	1	3	1	0	0	20
Worcester	1	0	1	0	3	1	7	7	20	3	0	1	44
Area 4 Total	4	0	3	5	7	4	17	20	30	6	0	2	98
5. Anne Arundel	2	1	4	5	7	12	22	25	33	0	0	3	114
Calvert	1	0	0	1	0	1	3	2	3	0	0	3	14
Charles	0	0	0	0	1	2	4	5	7	0	0	1	20
Prince George's	6	5	2	6	8	32	44	41	49	6	4	11	214
St. Mary's	0	0	0	0	1	0	3	7	2	0	0	0	13
Area 5 Total	9	6	6	12	17	47	76	80	94	6	4	18	375
Out of State	0	0	0	0	0	0	0	1	2	0	0	0	3
Out of State Total	0	0	0	0	0	0	0	1	2	0	0	0	3
Total	23	10	23	51	99	158	269	298	461	111	8	49	1560

Table 15
Intake Cases by Age and County of Jurisdiction for Males
FY 2001

Area	<10	10	11	12	13	14	15	16	17	18	Over 18	Age/ Unknown	Juris Total
1. Baltimore City	109	108	184	410	689	1118	1563	1599	1780	231	20	47	7858
Area 1 Total	109	108	184	410	689	1118	1563	1599	1780	231	20	47	7858
2. Baltimore	123	100	185	336	506	801	1068	1206	1223	191	5	12	5756
Carroll	7	22	23	35	57	107	183	212	240	27	1	23	937
Harford	10	20	27	58	93	153	213	323	418	32	3	2	1352
Howard	15	12	30	84	124	201	266	384	504	68	4	14	1706
Area 2 Total	155	154	265	513	780	1262	1730	2125	2385	318	13	51	9751
3. Allegany	14	13	18	46	45	91	116	140	210	16	0	0	709
Frederick	18	15	21	48	84	148	274	275	366	33	1	1	1284
Garrett	3	3	6	5	13	24	22	51	28	5	0	1	161
Montgomery	15	23	24	89	179	298	447	629	862	205	8	6	2785
Washington	14	12	28	57	92	157	169	168	268	15	1	5	986
Area 3 Total	64	66	97	245	413	718	1028	1263	1734	274	10	13	5925
4. Caroline	6	3	18	24	37	36	87	77	108	8	0	0	404
Cecil	15	15	22	57	56	91	113	163	163	9	0	6	710
Dorchester	13	15	13	37	60	69	91	72	77	12	1	3	463
Kent	5	6	12	9	4	51	82	58	62	3	0	0	292
Queen Anne`s	4	12	14	11	31	37	86	87	107	11	1	4	405
Somerset	4	3	4	9	24	36	42	45	28	2	2	0	199
Talbot	21	3	13	20	15	53	48	78	86	15	0	1	353
Wicomico	26	32	58	103	117	178	282	228	208	24	3	3	1262
Worcester	2	7	15	15	32	103	168	263	557	88	1	1	1252
Area 4 Total	96	96	169	285	376	654	999	1071	1396	172	8	18	5340
5. Anne Arundel	52	69	160	187	328	511	740	903	973	75	4	11	4013
Calvert	8	8	18	33	47	76	131	112	165	15	0	4	617
Charles	27	20	54	57	87	124	212	252	284	34	0	1	1152
Prince George`s	66	41	73	153	289	515	765	895	880	157	7	48	3889
St. Mary`s	17	15	19	27	44	105	127	159	186	20	0	0	719
Area 5 Total	170	153	324	457	795	1331	1975	2321	2488	301	11	64	10390
Out of State	0	0	0	0	4	7	4	8	10	1	1	0	35
Out of State Total	0	0	0	0	4	7	4	8	10	1	1	0	35
Total	594	577	1039	1910	3057	5090	7299	8387	9793	1297	63	193	39299

Table 16
Intake Cases by Age and County of Jurisdiction for Females
FY 2001

Area	<9	10	11	12	13	14	15	16	17	18	Over 18	Age /Unknown	Total
1. Baltimore City	12	14	50	108	229	308	359	278	281	44	3	56	1742
Area 1 Total	12	14	50	108	229	308	359	278	281	44	3	56	1742
2. Baltimore	34	29	62	140	224	333	427	462	453	47	1	4	2216
Carroll	4	3	1	7	29	51	70	92	65	10	3	19	354
Harford	4	2	11	29	35	83	76	96	112	8	0	4	460
Howard	4	1	7	10	31	65	149	143	183	28	1	25	647
Area 2	46	35	81	186	319	532	722	793	813	93	5	52	3677
3. Allegany	2	1	3	15	38	80	78	79	78	2	0	0	376
Frederick	1	1	11	36	53	82	113	121	126	6	0	8	558
Garrett	1	0	1	2	8	9	6	12	13	0	0	0	52
Montgomery	2	3	10	23	47	93	114	150	155	55	5	8	665
Washington	8	2	10	22	49	73	66	91	74	3	0	9	407
Area 3 Total	14	7	35	98	195	337	377	453	446	66	5	25	2058
4. Caroline	1	1	4	3	19	16	44	24	29	3	0	0	144
Cecil	2	3	3	20	45	49	49	44	45	3	1	3	267
Dorchester	11	4	10	4	20	40	31	39	13	2	0	7	181
Kent	3	2	1	5	9	14	24	27	28	0	0	0	113
Queen Anne's	0	0	1	6	7	15	34	34	37	3	1	0	138
Somerset	0	4	3	2	5	13	13	11	21	0	0	0	72
Talbot	5	4	0	5	12	15	29	29	33	3	0	1	136
Wicomico	2	2	22	38	60	70	113	120	92	5	0	1	525
Worcester	1	1	0	6	24	33	83	101	220	43	0	1	513
Area 4 Total	25	21	44	89	201	265	420	429	518	62	2	13	2089
5. Anne Arundel	20	21	24	81	139	245	319	278	311	26	4	6	1474
Calvert	3	2	2	8	25	28	37	69	51	7	0	19	251
Charles	4	5	12	21	43	57	121	106	84	6	3	0	462
Prince George's	10	12	18	44	88	153	212	206	219	33	1	29	1025
St. Mary's	1	3	1	16	20	50	101	89	66	4	0	0	351
Area 5 Total	38	43	57	170	315	533	790	748	731	76	8	54	3563
Out of State	0	0	0	1	2	1	2	2	5	0	0	0	13
Out of State Total	0	0	0	1	2	1	2	2	5	0	0	0	13
Total	135	120	267	652	1261	1976	2670	2703	2794	341	23	200	13142

Table 17
Number & Percent of Total Intake Cases by Referral Source
F Y 2001

Referral Source	FY 2001	Percent
Police	49438	90.2
Maryland State Agencies	779	1.4
Citizen	1032	1.9
Parent/Relative	663	1.2
Court	118	0.2
Other	411	0.7
State Total	52441	95.7

Table 18
Intake Cases by Referral Source & County of Jurisdiction
FY 2001

Area	Police	Maryland State Agencies	Citizen	Parent / Relative	Court	Other	Juris. Total
1. Baltimore City	8554	286	386	212	5	157	9600
Area 1 Total	8554	286	386	212	5	157	9600
2. Baltimore	7824	2	9	14	50	73	7972
Carroll	1121	72	31	44	1	22	1291
Harford	1799	3	0	0	4	6	1812
Howard	2321	0	13	6	0	13	2353
Area 2 Total	13065	77	53	64	55	114	13428
3. Allegany	1022	1	9	36	1	16	1085
Frederick	1722	41	25	41	1	12	1842
Garrett	160	12	12	25	1	3	213
Montgomery	3408	0	0	19	6	17	3450
Washington	999	4	205	180	1	4	1393
Area 3 Total	7311	58	251	301	10	52	7983
4. Caroline	536	1	5	1	4	1	548
Cecil	930	1	25	12	1	8	977
Dorchester	573	5	60	0	0	6	644
Kent	396	8	0	0	0	1	405
Queen Anne's	514	9	3	10	0	7	543
Somerset	268	0	0	0	1	2	271
Talbot	462	15	4	0	7	1	489
Wicomico	1785	0	1	0	0	1	1787
Worcester	1753	3	3	2	0	4	1765
Area 4 Total	7217	42	101	25	13	31	7429
5. Anne Arundel	5330	117	24	6	0	10	5487
Calvert	857	0	5	0	0	6	868
Charles	1599	0	2	0	2	11	1614
Prince George's	4404	199	210	53	33	15	4914
St. Mary's	1069	0	0	0	0	1	1070
Area 5 Total	13259	316	241	59	35	43	13953
State Total	49406	779	1032	661	118	397	52393 *

Note: * Total did not add up to 52441 because 48 youth were from out-of-state.

Table 19
Intake Cases - Offense by Offense Type
FY 1999 - FY 2001

Offenses	FY 1999	Percent	FY 2000	Percent	FY 2001	Percent	Percent Change '99 to '01
Person - to Person Offenses							
aggravated assault	355	0.6	764	1.4	875	1.7	146.5
child abuse	73	0.1	72	0.1	100	0.2	37.0
kidnapping	7	0.0	1	0.0	3	0.0	-57.1
manslaughter	6	0.0	7	0.0	6	0.0	0.0
murder	60	0.1	28	0.1	29	0.1	-51.7
robbery	649	1.2	807	1.5	994	1.9	53.2
sex offense	595	1.1	441	0.8	556	1.1	-6.6
simple assault	11399	20.7	10439	19.0	10016	19.1	-12.1
Total Person-to-Person	13144	23.8	12559	22.9	12579	24.0	-4.3
Property Offenses							
arson felony/misd	386	0.7	355	0.6	459	0.9	18.9
auto theft/unauthorized use	2060	3.7	2056	3.7	1804	3.4	-12.4
burglary/breaking & entering	2512	4.6	2582	4.7	2636	5.0	4.9
carjacking	23	0.0	29	0.1	58	0.1	152.2
malicious destruction	3358	6.1	3723	6.8	3852	7.4	0.0
tampering	99	0.2	113	0.2	92	0.2	-7.1
theft/shoplifting	8716	15.8	9246	16.9	8294	15.8	-4.8
trespassing	1522	2.8	1298	2.4	1094	2.1	-28.1
Total Property	18676	33.9	19402	35.4	18289	34.9	-2.1
Alcohol & Drug Related Offenses							
alcohol violations	3626	6.6	3002	5.5	3195	6.1	-11.9
glue sniffing & other inhalants	30	0.1	9	0.0	11	0.0	-63.3
narcotics distribution	2884	5.2	2055	3.7	2478	4.7	-14.1
narcotics possession	4814	8.7	6289	11.5	5078	9.7	5.5
Total - Alcohol & Drug related	11354	20.6	11355	20.7	10762	20.5	-5.2
CINS Offenses							
runaway	783	1.4	600	1.1	671	1.3	-14.3
truancy	322	0.6	325	0.6	444	0.8	37.9
ungovernable	646	1.2	664	1.2	658	1.3	1.9
Total - CINS	1751	3.2	1589	2.9	1773	3.4	1.3
Uncategorized - Offenses							
conspiracy	130	0.2	41	0.1	128	0.2	-1.5
false report	253	0.5	131	0.2	284	0.5	12.3
hand gun violations	230	0.4	167	0.3	132	0.3	-42.6
harrasment	191	0.3	207	0.4	228	0.4	19.4
loitering	436	0.8	293	0.5	222	0.4	-49.1
motor vehicle /traffic violations	1110	2.0	1502	2.7	1169	2.2	5.3
pager at school	67	0.1	14	0.0	30	0.1	-55.2
reckless endangerment	149	0.3	125	0.2	94	0.2	-36.9
rogue & vagabond	64	0.1	14	0.0	0	0.0	-100.0
telephone misuse	176	0.3	193	0.4	179	0.3	1.7
tobacco violations	2968	5.4	2089	3.8	1865	3.6	-37.2
unspecified felony	198	0.4	149	0.3	225	0.4	13.6
other/misdemeanors	4253	7.7	5018	9.1	4482	8.6	5.4
Total - Uncategorized	10225	18.5	9943	18.1	9038	17.3	-11.6
State Total	55150	100.0	54848	100.0	52441	100.1	-4.9

Note: Other/misdemeanors include offenses such as disorderly conduct, false alarm, fire work violations, carry or conceal a deadly weapon and offenses coded as "other" or "misdemeanors." Because of code changes from ISYS to ASSIST, these offenses are not separated out.

**Table 20
Intake Cases by Alleged Offenses & County of Jurisdiction
FY 2001**

Area	Aggravated Assault	Child Abuse	General Sex	Kidnapping	Manslaughter	Murder	Robbery	Sex Felony	Simple Assault	Arson Felony/ Misdemeanors	Auto Theft/ Unauthorized Use	Breaking & Entering	Carjacking	Malicious Destruction	Tampering	Theft / Shopping	Trespassing
1. Baltimore City	424	8	48	1	1	12	339	95	1511	32	949	431	35	363	5	579	272
Area 1 Total	424	8	48	1	1	12	339	95	1511	32	949	431	35	363	5	579	272
2. Baltimore	97	30	40	1	2	8	161	33	1994	128	169	433	6	766	13	1824	214
Carroll	12	2	2	0	0	0	2	3	232	21	8	37	0	116	1	124	16
Harford	14	3	5	0	0	0	9	4	399	10	44	64	0	163	7	253	25
Howard	26	4	16	0	0	0	27	13	460	15	38	96	0	152	2	382	52
Area 2 Total	149	39	63	1	2	8	199	53	3085	174	259	630	6	1197	23	2583	307
3. Allegany	3	0	0	0	0	0	2	8	154	6	13	18	0	74	6	172	23
Frederick	11	4	6	0	0	0	7	6	314	12	20	59	0	129	5	212	22
Garrett	3	1	0	1	0	0	0	0	25	1	5	14	0	3	0	21	4
Montgomery	38	11	4	0	2	2	138	23	552	18	64	246	10	263	6	714	66
Washington	12	1	1	0	0	0	5	8	226	11	21	46	0	93	3	257	14
Area 3 Total	67	17	11	1	2	2	152	45	1271	48	123	383	10	562	20	1376	129
4. Caroline	5	0	9	0	0	0	10	13	128	5	9	34	0	58	0	80	8
Cecil	4	6	5	0	0	0	5	6	255	8	28	29	0	117	3	131	16
Dorchester	1	0	4	0	0	0	0	3	158	3	16	29	0	63	0	83	18
Kent	1	0	0	0	0	0	2	0	101	3	0	1	0	31	2	12	11
Queen Anne's	4	0	1	0	0	0	2	5	65	7	12	30	0	59	0	42	5
Somerset	3	0	0	0	0	0	4	5	72	4	6	20	0	34	0	21	4
Talbot	2	1	1	0	0	0	1	2	88	2	13	38	0	41	0	57	9
Wicomico	28	2	9	0	0	1	5	3	488	21	20	100	0	117	4	305	29
Worcester	4	1	2	0	0	0	3	4	90	12	20	29	0	166	3	214	8
Area 4 Total	52	10	31	0	0	1	32	41	1445	65	124	310	0	686	12	945	108
5. Anne Arundel	41	9	27	0	0	0	79	24	1131	41	64	305	1	493	23	1130	109
Calvert	3	6	3	0	0	0	3	7	146	7	12	106	0	63	0	87	16
Charles	19	3	12	0	1	0	10	5	375	48	22	77	0	101	2	340	18
Prince George's	112	6	30	0	0	6	172	54	832	36	224	322	6	294	6	1143	128
St.Mary's	8	2	0	0	0	0	7	4	218	8	24	72	0	88	1	100	5
Area 5 Total	183	26	72	0	1	6	271	94	2702	140	346	882	7	1039	32	2800	276
Out-o-fState	0	0	1	0	0	0	1	2	2	0	3	0	0	5	0	11	2
State Total	875	100	226	3	6	29	994	330	10016	459	1804	2636	58	3852	92	8294	1094

**Table 20
Intake Cases by Alleged Offenses & County of Jurisdiction
FY 2001**

Area	Alcohol Violation	Glue Sniffing	Narcotics Distribution	Narcotic Possession	Runaway	Truant	Ungovernable	Bomb Threat	Conspiracy Felony / Misdemeanor	False Alarm	False Report	Fireworks Violation	Handgun Violation	Harrasment	Lottery
1. Baltimore City	52	4	1677	934	6	147	174	4	8	6	20	12	81	11	210
Area 1 Total	52	4	1677	934	6	147	174	4	8	6	20	12	81	11	210
2. Baltimore	248	2	93	753	7	0	9	16	5	5	39	10	14	37	5
Carroll	134	0	12	204	45	36	33	2	14	0	18	3	1	23	1
Harford	73	0	44	218	4	3	0	8	3	3	13	1	1	11	0
Howard	310	0	36	250	14	0	2	0	2	0	6	4	4	9	0
Area 2 Total	765	2	185	1425	70	39	44	26	24	8	76	18	20	80	6
3. Allegany	197	0	17	86	59	4	38	8	0	1	6	2	0	3	0
Frederick	152	0	49	218	84	40	36	0	39	1	11	1	0	2	0
Garrett	35	0	6	23	1	12	19	0	0	0	2	0	0	5	0
Montgomery	218	0	61	338	7	0	19	7	17	1	15	3	3	5	1
Washington	136	0	38	96	4	6	154	3	5	1	9	9	0	31	1
Area 3 Total	738	0	171	761	155	62	266	18	61	4	43	15	3	46	2
4. Caroline	34	0	7	30	41	2	2	1	0	0	6	3	0	4	0
Cecil	89	5	14	93	15	1	3	7	2	1	7	1	1	6	0
Dorchester	27	0	16	35	23	2	0	1	0	3	3	2	1	2	0
Kent	38	0	5	32	8	8	0	0	0	0	0	1	0	0	0
Queen Anne's	81	0	10	83	36	3	7	2	1	0	5	2	0	1	0
Somerset	21	0	4	11	16	0	0	0	0	0	11	0	0	0	0
Talbot	62	0	8	44	28	0	0	2	4	1	1	0	0	2	0
Wicomico	96	0	33	114	15	4	2	1	5	2	10	2	3	12	0
Worcester	497	0	40	231	53	3	2	0	0	0	12	0	1	1	0
Area 4 Total	945	5	137	673	235	23	16	14	12	7	55	11	6	28	0
5. Anne Arundel	281	0	130	636	1	119	3	21	11	5	29	11	11	35	0
Calvert	37	0	16	76	147	1	0	0	2	0	4	5	0	0	0
Charles	152	0	20	132	2	0	0	8	6	1	12	5	0	3	0
Prince George's	87	0	133	361	3	50	154	8	4	8	38	6	10	24	4
St.Mary's	138	0	9	76	50	3	0	1	0	1	7	0	0	1	0
Area 5 Total	695	0	308	1281	203	173	157	38	23	15	90	27	21	63	4
Out of State	0	0	0	4	2	0	1	0	0	0	0	0	1	0	0
State Total	3195	11	2478	5078	671	444	658	100	128	40	284	83	132	228	222

Table 20
Intake Cases by Alleged Offenses & County of Jurisdiction
FY 2001

Area	Other Felony	Pager at School	Reckless Endangerment	Telephone Misuse	Tobacco Violation	Traffic Violation	Violation of Probation	Other Misdemeanor	Juris. Total
1. Baltimore City	10	1	7	6	3	124	48	950	9600
Area 1 Total	10	1	7	6	3	124	48	950	9600
2. Baltimore	9	1	6	51	166	88	47	442	7972
Carroll	14	0	3	11	34	38	9	80	1291
Harford	12	2	3	10	260	37	3	103	1812
Howard	11	3	1	7	146	86	2	177	2353
Area 2 Total	46	6	13	79	606	249	61	802	13428
3. Allegany	9	0	1	9	62	34	5	65	1085
Frederick	14	2	7	4	219	44	1	111	1842
Garrett	3	0	3	1	1	4	0	20	213
Montgomery	33	1	7	8	25	264	11	249	3450
Washington	7	3	2	5	28	33	1	123	1393
Area 3 Total	66	6	20	27	335	379	18	568	7983
4. Caroline	1	0	1	5	8	11	0	33	548
Cecil	0	0	13	9	3	16	7	71	977
Dorchester	8	0	6	3	12	25	0	97	644
Kent	3	5	0	0	31	5	4	101	405
Queen Anne's	4	9	2	4	15	9	14	23	543
Somerset	1	0	3	1	2	1	3	24	271
Talbot	5	0	2	1	28	10	1	35	489
Wicomico	23	3	3	5	156	24	1	141	1787
Worcester	1	0	2	4	165	30	2	165	1765
Area 4 Total	46	17	32	32	420	131	32	690	7429
5. Anne Arundel	9	0	9	10	174	164	2	349	5487
Calvert	3	0	2	6	13	25	0	72	868
Charles	4	0	0	5	104	29	5	93	1614
Prince George's	33	0	10	7	100	57	2	444	4914
St.Mary's	4	0	0	7	110	11	0	115	1070
Area 5 Total	53	0	21	35	501	286	9	1073	13953
Out-of-State	4	0	1	0	0	0	2	6	48
State Total	225	30	94	179	1865	1169	170	4089	52441

Table 21
Intake Cases by Alleged Offenses & County of Jurisdiction for African American Youth
FY 2001

Area	Aggravated Assault	Child Abuse	General Sex	Kidnapping	Manslaughter	Murder	Robbery	Sex Felony	Simple Assault	Arson Felony/ Misdemeanors	Auto Theft Felony/ Misdemeanor	Breaking & Entering	Carjacking	Malicious Destruction	Tampering	Theft / Shopping	Trespassing
1. Baltimore City	362	8	37	0	0	12	314	84	1314	26	873	369	35	284	5	477	225
Area 1 Total	362	8	37	0	0	12	314	84	1314	26	873	369	35	284	5	477	225
2. Baltimore	55	14	24	1	0	6	122	23	1064	75	103	184	4	259	4	1199	112
Carroll	2	0	0	0	0	0	1	0	20	1	1	0	0	4	0	5	1
Harford	10	0	2	0	0	0	3	0	140	1	17	9	0	15	1	55	6
Howard	14	1	11	0	0	0	16	2	230	8	15	39	0	50	0	171	26
Area 2 Total	81	15	37	1	0	6	142	25	1454	85	136	232	4	328	5	1430	145
3. Allegany	0	0	0	0	0	0	0	1	22	0	3	0	0	6	0	17	0
Frederick	7	2	4	0	0	0	4	1	147	1	3	6	0	22	1	52	9
Garrett	2	1	0	0	0	0	0	0	5	0	1	0	0	0	0	1	0
Montgomery	29	0	2	0	0	2	116	7	310	5	26	132	8	72	0	427	25
Washington	2	0	0	0	0	0	1	0	40	4	3	3	0	9	0	43	2
Area 3 Total	40	3	6	0	0	2	121	9	524	10	36	141	8	109	1	540	36
4. Caroline	2	0	3	0	0	0	6	10	54	2	5	9	0	17	0	26	3
Cecil	0	0	0	0	0	0	0	2	30	0	2	2	0	14	0	11	0
Dorchester	1	0	3	0	0	0	0	2	98	2	5	20	0	34	0	61	9
Kent	0	6	0	0	0	0	2	0	67	3	0	1	0	12	2	6	8
Queen Anne's	2	0	0	0	0	0	0	1	21	1	5	3	0	6	0	14	2
Somerset	3	0	0	0	0	0	3	4	56	2	2	16	0	20	0	18	4
Talbot	1	0	0	0	0	0	1	2	60	2	2	14	0	16	0	25	2
Wicomico	17	0	8	0	0	1	3	2	338	14	10	57	0	54	3	203	20
Worcester	2	1	0	0	0	0	1	2	30	5	11	14	0	49	1	53	4
Area 4 Total	28	7	14	0	0	1	16	25	754	31	42	136	0	222	6	417	52
5. Anne Arundel	7	2	16	0	0	0	57	5	446	10	20	78	0	104	4	434	34
Calvert	2	2	1	0	0	0	0	1	31	1	1	21	0	7	0	29	1
Charles	13	1	6	0	0	0	10	2	216	3	17	33	0	43	2	211	7
Prince George's	104	0	19	0	0	5	158	45	748	30	203	248	6	174	0	994	100
St.Mary's	3	0	0	0	0	0	5	2	110	0	5	27	0	21	0	26	4
Area 5 Total	129	5	42	0	0	5	230	55	1551	44	246	407	6	349	6	1694	146
Out-ofState	0	3	0	0	0	0	1	0	0	0	0	0	0	1	2	3	0
State Total	640	41	136	1	0	26	824	198	5597	196	1333	1285	53	1293	25	4561	604

Table 21
Intake Cases by Alleged Offenses & County of Jurisdiction for African American Youth
FY 2001

Area	Alcohol Violation	Glue Sniffing	Narcotics Distribution	Narcotic Possession	Bomb Threat	Conspiracy Felony / Misdeameanor	False Alarm	False Report	Fire Violence	Handgun	Harrasment	Loitering	Pager at School	Reckless Endangerment	Telephone Misuse
1. Baltimore City	37	0	1633	844	4	6	3	18	1	79	8	204	0	5	6
Area 1 Total	37	0	1633	844	4	6	3	18	1	79	8	204	0	5	6
2. Baltimore	15	0	51	247	7	7	4	17	9	6	8	1	0	4	14
Carroll	2	0	2	10	2	3	0	0	0	0	4	0	0	0	1
Harford	6	0	14	25	1	1	1	3	0	1	3	0	1	0	1
Howard	18	0	6	52	0	0	0	3	1	1	2	0	2	0	1
Area 2 Total	41	0	73	334	10	11	5	23	10	8	17	1	3	4	17
3. Allegany	4	0	3	4	0	0	0	0	1	0	0	0	0	0	1
Frederick	9	0	18	20	0	4	0	3	0	0	1	0	2	0	0
Garrett	0	0	0	0	0	0	0	0	0	0	0	0	0	0	0
Montgomery	51	0	28	119	1	1	0	10	0	1	3	0	1	1	5
Washington	9	0	21	14	0	0	0	0	2	0	5	0	0	0	0
Area 3 Total	73	0	70	157	1	5	0	13	3	1	9	0	3	1	6
4. Caroline	1	0	6	9	1	1	0	2	0	0	2	0	0	0	2
Cecil	0	0	3	8	0	0	0	4	0	0	0	0	0	0	0
Dorchester	2	0	14	11	0	0	3	1	2	1	2	0	0	1	2
Kent	3	0	5	6	0	0	0	0	0	0	0	0	1	0	0
Queen Anne's	7	0	1	7	1	1	0	2	0	0	0	0	0	0	0
Somerset	3	0	2	3	0	0	0	4	0	0	0	0	1	3	1
Talbot	7	0	6	7	2	4	1	0	0	0	0	0	0	0	0
Wicomico	17	0	21	42	1	4	1	4	0	1	9	0	3	3	3
Worcester	17	0	9	34	0	0	0	2	0	0	0	0	0	1	2
Area 4 Total	57	0	67	127	5	10	5	19	2	2	13	0	5	8	10
5. Anne Arundel	21	0	60	109	4	4	2	9	3	5	8	0	1	1	0
Calvert	2	0	4	8	0	1	0	2	0	0	0	0	0	1	2
Charles	35	0	12	56	3	3	1	8	1	0	2	0	0	0	0
Prince George's	41	0	112	261	6	8	5	35	2	10	23	3	8	8	5
St.Mary's	13	0	4	18	1	1	0	1	0	0	0	0	0	0	3
Area 5 Total	112	0	192	452	14	17	8	55	6	15	33	3	9	10	10
Out of State	0	0	0	0	0	0	0	0	0	1	0	0	0	0	0
State Total	320	0	2035	1914	34	49	21	128	22	106	80	208	20	28	49

**Table 21
Intake Cases by Alleged Offenses & County of Jurisdiction for African American Youth
FY 2001**

Area	Runaways	Truant	Ungovernable	Other Felony	Tobacco Violation	Traffic Violation	Violation of Probation	Other Misdemeanor	Juris. Total
1. Baltimore City	3	104	167	10	2	105	43	873	8580
Area 1 Total	3	104	167	10	2	105	43	873	8580
2. Baltimore	1	0	3	3	13	25	9	190	3883
Carroll	1	0	2	6	1	0	0	4	73
Harford	0	0	0	0	28	8	0	17	369
Howard	6	0	0	1	15	14	1	59	765
Area 2 Total	8	0	5	10	57	47	10	270	5090
3. Allegany	5	0	3	7	1	0	0	5	83
Frederick	12	7	6	4	17	3	1	40	406
Garrett	0	0	0	2	0	0	0	0	12
Montgomery	1	0	5	12	4	60	4	125	1593
Washington	0	1	23	3	2	1	0	20	208
Area 3 Total	18	8	37	28	24	64	5	190	2302
4. Caroline	5	0	1	1	0	2	0	9	179
Cecil	0	0	0	0	0	1	0	4	81
Dorchester	20	2	0	4	4	13	0	60	377
Kent	0	2	0	2	12	1	3	46	188
Queen Anne's	15	0	3	0	1	0	7	4	104
Somerset	10	0	0	0	1	0	2	14	172
Talbot	12	0	0	4	3	0	0	15	186
Wicomico	9	3	1	6	38	9	1	91	997
Worcester	6	1	2	0	9	6	1	21	284
Area 4 Total	77	8	7	17	68	32	14	264	2568
5. Anne Arundel	0	38	2	2	16	34	2	124	1662
Calvert	26	0	0	1	1	0	0	14	159
Charles	1	0	0	3	8	6	3	51	757
Prince George's	2	37	130	23	37	43	2	368	4003
St.Mary's	12	0	0	2	9	3	0	50	320
Area 5 Total	41	75	132	31	71	86	7	607	6901
Out-of-State	1	0	0	0	0	0	1	0	13
State Total	148	195	348	96	222	334	80	2204	25454

Table 22
Intake Cases by Alleged Offenses & County of Jurisdiction for Caucasian Youth
FY 2001

Area	Aggravated Assault	Child Abuse	General Sex	Kidnapping	Manslaughter	Murder	Robbery	Sex Felony	Simple Assault	Arson Felony/ Misdemeanors	Auto Theft Felony/ Misdemeanor	Breaking & Entering	Carjacking	Malicious Destruction	Tampering	Theft / Shopping	Trespassing
1. Baltimore City	53	0	11	0	1	0	20	10	171	6	68	55	0	72	0	93	44
Area 1 Total	53	0	11	0	1	0	20	10	171	6	68	55	0	72	0	93	44
2. Baltimore	40	16	14	0	2	2	38	9	904	52	65	239	2	491	9	607	102
Carroll	10	2	2	0	0	0	1	3	209	20	7	37	0	111	1	119	14
Harford	4	3	2	0	0	0	5	4	252	9	26	54	0	147	6	188	17
Howard	9	3	4	0	0	0	10	11	212	7	22	49	0	93	2	183	22
Area 2 Total	63	24	22	0	2	2	54	27	1577	88	120	379	2	842	18	1097	155
3. Allegany	2	0	0	0	0	0	2	7	132	6	10	18	0	68	6	152	23
Frederick	4	1	2	0	0	0	3	4	164	11	15	52	0	100	3	154	13
Garrett	1	0	0	1	0	0	0	0	20	1	4	14	0	3	0	20	4
Montgomery	4	1	2	0	2	0	14	10	188	12	27	79	0	117	6	164	37
Washington	10	1	1	0	0	0	3	7	172	7	18	42	0	82	2	198	12
Area 3 Total	21	3	5	1	2	0	22	28	676	37	74	205	0	370	17	688	89
4. Caroline	2	0	6	0	0	0	4	3	71	3	4	25	0	40	0	54	5
Cecil	4	6	5	0	0	0	5	4	222	8	26	27	0	102	3	118	16
Dorchester	0	0	1	0	0	0	0	1	60	1	11	9	0	28	0	22	9
Kent	1	0	0	0	0	0	0	0	30	0	0	0	0	19	0	6	3
Queen Anne's	2	0	1	0	0	0	2	4	43	6	7	27	0	53	0	28	3
Somerset	0	0	0	0	0	0	1	1	16	2	4	4	0	14	0	3	0
Talbot	1	1	1	0	0	0	0	0	27	0	11	24	0	25	0	32	7
Wicomico	10	2	1	0	0	0	2	1	139	7	10	43	0	63	1	100	8
Worcester	2	0	2	0	0	0	2	2	59	6	8	15	0	117	2	156	4
Area 4 Total	22	9	17	0	0	0	16	16	667	33	81	174	0	461	6	519	55
5. Anne Arundel	34	7	11	0	0	0	22	19	666	30	42	220	1	383	18	672	74
Calvert	1	4	2	0	0	0	3	4	114	6	11	85	0	53	0	58	15
Charles	6	2	6	0	1	0	0	3	158	44	4	44	0	56	0	125	11
Prince George's	7	3	9	0	0	1	8	4	55	5	12	55	0	115	4	99	24
St.Mary's	5	2	0	0	0	0	2	2	108	8	19	44	0	67	1	72	1
Area 5 Total	53	18	28	0	1	1	35	32	1101	93	88	448	1	674	23	1026	125
Out-o-fState	0	0	1	0	0	0	0	2	2	0	3	0	0	2	0	7	2
State Total	212	54	84	1	6	3	147	115	4194	257	434	1261	3	2421	64	3430	470

Table 22
Intake Cases by Alleged Offenses & County of Jurisdiction for Caucasian Youth
FY 2001

Area	Alcohol Violation	Glue Sniffing	Narcotics Distribution	Narcotic Possession	Bomb Threat	Conspiracy Felony / Misdeameanor	False Alarm	False Report	Fire Violence	Handgun	Harrasment	Loitering	Pager at School	Reckless Endangerment	Telephone Misuse
1. Baltimore City	15	2	37	86	0	0	3	2	3	2	3	5	0	2	0
Area 1 Total	15	2	37	86	0	0	3	2	3	2	3	5	0	2	0
2. Baltimore	228	4	41	498	9	4	1	19	7	6	29	4	1	2	36
Carroll	132	0	10	194	0	13	0	18	3	1	19	1	0	3	10
Harford	66	0	29	191	7	3	2	10	1	0	8	0	1	3	9
Howard	282	0	23	194	0	2	0	3	3	3	7	0	2	1	6
Area 2 Total	708	4	103	1077	16	22	3	50	14	10	63	5	4	9	61
3. Allegany	190	0	14	80	8	0	1	6	2	0	3	0	0	1	8
Frederick	143	0	31	192	0	27	1	8	1	0	1	0	0	7	4
Garrett	35	0	6	23	0	0	0	2	0	0	5	0	0	3	1
Montgomery	144	0	29	181	6	5	1	2	3	1	2	1	0	6	3
Washington	127	0	15	82	3	4	1	9	7	0	26	1	0	2	5
Area 3 Total	639	0	95	558	17	36	4	27	13	1	37	2	0	19	21
4. Caroline	32	0	1	21	0	0	0	4	3	0	2	0	0	1	3
Cecil	88	5	11	85	7	2	1	3	1	1	6	0	0	13	9
Dorchester	25	0	2	24	1	0	0	2	0	0	0	0	0	5	1
Kent	35	0	0	26	0	0	0	0	1	0	0	0	0	0	0
Queen Anne's	74	0	9	76	1	1	0	2	2	0	1	0	0	2	4
Somerset	18	0	2	8	0	0	0	7	0	0	0	0	0	0	0
Talbot	54	0	2	35	0	2	0	1	0	0	2	0	0	2	1
Wicomico	79	0	12	72	0	2	1	6	2	2	3	0	0	0	2
Worcester	464	0	30	194	0	0	0	10	0	1	1	0	0	1	2
Area 4 Total	869	5	69	541	9	7	2	35	9	4	15	0	0	24	22
5. Anne Arundel	256	0	69	495	17	0	3	20	10	6	27	0	1	8	10
Calvert	35	0	10	67	0	1	0	2	4	0	0	0	0	1	4
Charles	111	0	8	75	5	3	0	3	4	0	1	0	0	0	5
Prince George's	41	0	12	87	1	1	2	2	3	0	1	1	0	1	2
St.Mary's	122	0	5	58	0	0	1	6	0	0	1	0	2	0	4
Area 5 Total	565	0	104	782	23	5	6	33	21	6	30	1	3	10	25
Out of State	0	0	0	4	0	0	0	0	0	0	0	0	0	1	0
State Total	2796	11	408	3048	65	70	18	147	60	23	148	13	7	65	129

Table 22
Intake Cases by Alleged Offenses & County of Jurisdiction for Caucasian Youth
FY 2001

Area	Runaway	Truant	Ungovernable	Other Felony	Tobacco Violation	Traffic Violation	Violation of Probation	Other Misdemeanor	Juris. Total
1. Baltimore City	3	31	6	0	1	13	5	83	906
Area 1 Total	3	31	6	0	1	13	5	83	906
2. Baltimore	6	0	6	6	149	56	38	235	3977
Carroll	44	34	30	8	32	38	9	72	1207
Harford	4	3	0	12	229	29	3	83	1410
Howard	8	0	2	8	124	65	1	105	1466
Area 2 Total	62	37	38	34	534	188	51	495	8060
3. Allegany	54	4	34	2	61	34	5	59	992
Frederick	61	32	27	9	200	41	0	76	1387
Garrett	1	12	19	1	1	4	0	20	201
Montgomery	4	0	5	15	15	86	5	99	1276
Washington	4	5	122	4	26	32	1	102	1133
Area 3 Total	124	53	207	31	303	197	11	356	4989
4. Caroline	36	2	1	0	8	8	0	22	361
Cecil	15	1	3	0	3	15	7	67	889
Dorchester	3	0	0	4	8	12	0	36	265
Kent	8	4	0	1	19	4	1	52	210
Queen Anne's	20	3	4	4	14	9	7	27	436
Somerset	6	0	0	1	1	1	1	9	99
Talbot	14	0	0	0	25	10	1	18	296
Wicomico	6	1	1	17	117	13	0	47	770
Worcester	47	1	0	1	149	23	1	137	1437
Area 4 Total	155	12	9	28	344	95	18	415	4763
5. Anne Arundel	1	80	1	7	156	124	0	221	3711
Calvert	118	1	0	2	11	25	0	58	695
Charles	1	0	0	1	95	23	2	40	837
Prince George's	1	6	17	9	51	11	0	47	697
St.Mary's	35	3	0	2	99	7	0	61	737
Area 5 Total	156	90	18	21	412	190	2	427	6677
Out-of-State	1	0	1	1	0	0	1	4	32
State Total	501	223	279	115	1594	683	88	1780	25427

Table 23
Intake Cases by Alleged Offenses & County of Jurisdiction for Other Youth
FY 2001

Area	Aggravated Assault	Child Abuse	General Sex	Kidnapping	Manslaughter	Murder	Robbery	Sex Felony	Simple Assault	Arson Felony/ Misdemeanors	Auto Theft Felony/ Misdemeanor	Breaking & Entering	Carjacking	Malicious Destruction	Tampering	Theft / Shopping	Trespassing
1. Baltimore City	9	0	0	1	0	0	5	1	26	0	8	7	0	7	0	9	3
Area 1 Total	9	0	0	1	0	0	5	1	26	0	8	7	0	7	0	9	3
2. Baltimore	2	0	2	0	0	0	1	1	26	1	1	10	0	16	0	18	0
Carroll	0	0	0	0	0	0	0	0	3	0	0	0	0	1	0	0	1
Harford	0	0	1	0	0	0	1	0	7	0	1	1	0	1	0	10	2
Howard	3	0	1	0	0	0	1	0	18	0	1	8	0	9	0	28	4
Area 2 Total	5	0	4	0	0	0	3	1	54	1	3	19	0	27	0	56	7
3. Allegany	1	0	0	0	0	0	0	0	0	0	0	0	0	0	0	3	0
Frederick	0	1	0	0	0	0	0	1	3	0	2	1	0	7	1	6	0
Garrett	0	0	0	0	0	0	0	0	0	0	0	0	0	0	0	0	0
Montgomery	5	4	0	0	0	0	8	6	54	1	11	35	2	74	0	123	4
Washington	0	0	0	0	0	0	1	1	14	0	0	1	0	2	1	16	0
Area 3 Total	6	5	0	0	0	0	9	8	71	1	13	37	2	83	2	148	4
4. Caroline	1	0	0	0	0	0	0	0	3	0	0	0	0	1	0	0	0
Cecil	0	0	0	0	0	0	0	0	3	0	0	0	0	1	0	2	0
Dorchester	0	0	0	0	0	0	0	0	0	0	0	0	0	1	0	0	0
Kent	0	0	0	0	0	0	0	0	4	0	0	0	0	0	0	0	0
Queen Anne's	0	0	0	0	0	0	0	0	1	0	0	0	0	0	0	0	0
Somerset	0	0	0	0	0	0	0	0	0	0	0	0	0	0	0	0	0
Talbot	0	0	0	0	0	0	0	0	1	0	0	0	0	0	0	0	0
Wicomico	1	0	0	0	0	0	0	0	11	0	0	0	0	0	0	2	1
Worcester	0	0	0	0	0	0	0	0	1	1	1	0	0	0	0	5	0
Area 4 Total	2	0	0	0	0	0	0	0	24	1	1	0	0	3	0	9	1
5. Anne Arundel	0	0	0	0	0	0	0	0	19	1	2	7	0	6	1	24	1
Calvert	0	0	0	0	0	0	0	2	1	0	0	0	0	3	0	0	0
Charles	0	0	0	0	0	0	0	0	1	1	1	0	0	2	0	4	0
Prince George's	0	0	2	0	0	0	0	5	29	1	9	19	0	5	0	50	4
St.Mary's	0	0	0	0	0	0	0	0	0	0	0	1	0	0	0	2	0
Area 5 Total	0	0	2	0	0	0	0	7	50	3	12	27	0	16	1	80	5
Out-ofState	0	0	0	0	0	0	0	0	0	0	0	0	0	2	0	1	0
State Total	22	5	6	1	0	0	17	17	225	6	37	90	2	138	3	303	20

Table 23
Intake Cases by Alleged Offenses & County of Jurisdiction for Other Youth
FY 2001

Area	Alcohol Violation	Glue Sniffing	Narcotics Distribution	Narcotic Possession	Bomb Threat	Conspiracy Felony / Misdemeanor	False Alarm	False Report	Fire Violence	Handgun	Harrasment	Loitering	Pager at School	Reckless Endangerment	Telephone Misuse
1. Baltimore City	0	0	7	4	0	0	0	0	0	0	0	1	0	0	0
Area 1 Total	0	0	7	4	0	0	0	0	0	0	0	1	0	0	0
2. Baltimore	5	0	1	8	0	0	0	0	0	2	0	0	0	0	1
Carroll	0	0	0	0	0	0	0	0	0	0	0	0	0	0	0
Harford	1	0	1	2	0	0	0	0	0	0	0	0	0	0	0
Howard	10	0	7	4	0	0	0	0	0	0	0	0	1	0	0
Area 2 Total	16	0	9	14	0	0	0	0	0	2	0	0	1	0	1
3. Allegany	3	0	0	2	0	0	0	0	0	0	0	0	0	0	0
Frederick	0	0	0	6	0	1	0	0	0	0	0	0	0	0	0
Garrett	0	0	0	0	0	0	0	0	0	0	0	0	0	0	0
Montgomery	23	0	4	38	0	0	0	3	0	1	0	0	1	0	0
Washington	0	0	2	0	0	0	0	0	0	0	0	0	0	0	0
Area 3 Total	26	0	6	46	0	1	0	3	0	1	0	0	1	0	0
4. Caroline	1	0	0	0	0	0	0	0	0	0	0	0	0	0	0
Cecil	1	0	0	0	0	0	0	0	0	0	0	0	0	0	0
Dorchester	0	0	0	0	0	0	0	0	0	0	0	0	0	0	0
Kent	0	0	0	0	0	0	0	0	0	0	0	0	0	0	0
Queen Anne's	0	0	0	0	0	0	0	1	0	0	0	0	0	0	0
Somerset	0	0	0	0	0	0	0	0	0	0	0	0	0	0	0
Talbot	1	0	0	2	0	0	0	0	0	0	0	0	0	0	0
Wicomico	0	0	0	0	0	0	0	0	0	0	0	0	0	0	0
Worcester	16	0	1	3	0	0	0	0	0	0	0	0	0	0	0
Area 4 Total	19	0	1	5	0	0	0	1	0	0	0	0	0	0	0
5. Anne Arundel	4	0	1	32	0	0	0	3	0	0	0	0	0	0	0
Calvert	0	0	2	1	0	0	0	0	0	0	0	0	0	0	0
Charles	6	0	0	1	0	1	0	1	0	0	0	0	0	0	0
Prince George's	5	0	9	13	1	0	1	1	1	0	0	0	1	1	0
St.Mary's	3	0	0	0	0	0	0	0	0	0	0	0	0	0	0
Area 5 Total	18	0	12	47	1	1	1	5	1	0	0	0	1	1	0
Out of State	0	0	0	0	0	0	0	0	0	0	0	0	0	0	0
State Total	79	0	35	116	1	2	1	9	1	3	0	1	3	1	1

Table 23
Intake Cases by Alleged Offenses & County of Jurisdiction for Other Youth
FY 2001

Area	Runaway	Truant	Ungovernable	Other Felony	Tobacco Violation	Traffic Violation	Violation of Probation	Other Misdemeanor	Juris. Total
1. Baltimore City	0	12	1	0	0	6	0	7	114
Area 1 Total	0	12	1	0	0	6	0	7	114
2. Baltimore	0	0	0	0	4	7	0	6	112
Carroll	0	2	1	0	1	0	0	2	11
Harford	0	0	0	0	3	0	0	2	33
Howard	0	0	0	2	7	7	0	11	122
Area 2 Total	0	2	1	2	15	14	0	21	278
3. Allegany	0	0	1	0	0	0	0	0	10
Frederick	11	1	3	1	2	0	0	2	49
Garrett	0	0	0	0	0	0	0	0	0
Montgomery	2	0	9	6	6	118	2	41	581
Washington	0	0	9	1	0	0	0	4	52
Area 3 Total	13	1	22	8	8	118	2	47	692
4. Caroline	0	0	0	0	0	1	0	1	8
Cecil	0	0	0	0	0	0	0	0	7
Dorchester	0	0	0	0	0	0	0	1	2
Kent	0	2	0	0	0	0	0	1	7
Queen Anne's	1	0	0	0	0	0	0	0	3
Somerset	0	0	0	0	0	0	0	0	0
Talbot	2	0	0	0	0	0	0	1	7
Wicomico	0	0	0	0	1	2	0	2	20
Worcester	0	1	0	0	7	1	0	7	44
Area 4 Total	3	3	0	0	8	4	0	13	98
5. Anne Arundel	0	1	0	0	2	6	0	4	114
Calvert	3	0	0	0	1	0	0	1	14
Charles	0	0	0	0	1	0	0	1	20
Prince George's	0	7	7	1	12	3	0	27	214
St.Mary's	3	0	0	0	2	1	0	1	13
Area 5 Total	6	8	7	1	18	10	0	34	375
Out-of-State	0	0	0	0	0	0	0	0	3
State Total	22	26	31	11	49	152	2	122	1560

**Table 24
Intake Cases by Alleged Offenses & County of Jurisdiction for Males
FY 2001**

Area	Aggravated Assault	Child Abuse	General Sex	Kidnapping	Manslaughter	Murder	Robbery	Sex Felony	Simple Assault	Arson Felony/ Misdemeanors	Auto Theft Felony/ Misdemeanor	Breaking & Entering	Carjacking	Malicious Destruction	Tampering	Theft / Shopping	Trespassing
1. Baltimore City	298	4	40	1	1	11	309	85	989	29	862	369	34	290	5	451	220
Area 1 Total	298	4	40	1	1	11	309	85	989	29	862	369	34	290	5	451	220
2. Baltimore	65	28	38	0	2	7	151	31	1343	118	144	400	3	648	11	1058	182
Carroll	8	2	2	0	0	0	2	2	175	14	4	27	0	104	0	77	14
Harford	12	3	5	0	0	0	6	4	269	8	39	56	0	146	7	162	21
Howard	23	4	15	0	0	0	25	11	326	13	28	83	0	139	1	237	39
Area 2 Total	108	37	60	0	2	7	184	48	2113	153	215	566	3	1037	19	1534	256
3. Allegany	3	0	0	0	0	0	2	5	87	6	9	17	0	58	4	112	18
Frederick	11	4	6	0	0	0	7	6	226	12	14	56	0	110	3	134	17
Garrett	3	1	0	0	0	0	0	0	24	1	2	13	0	3	0	15	4
Montgomery	31	11	3	0	2	1	133	23	389	16	54	233	10	246	6	532	53
Washington	12	1	1	0	0	0	4	8	153	10	17	42	0	83	3	163	11
Area 3 Total	60	17	10	0	2	1	146	42	879	45	96	361	10	500	16	956	103
4. Caroline	4	0	8	0	0	0	7	13	80	4	7	32	0	48	0	66	8
Cecil	3	6	5	0	0	0	5	6	170	8	10	28	0	99	3	87	15
Dorchester	0	0	4	0	0	0	0	3	110	3	6	24	0	48	0	63	16
Kent	1	0	0	0	0	0	2	0	71	3	0	0	0	23	1	9	11
Queen Anne's	3	0	1	0	0	0	2	5	45	6	9	30	0	49	0	31	5
Somerset	3	0	0	0	0	0	4	5	40	4	4	19	0	24	0	21	2
Talbot	1	1	1	0	0	0	1	2	63	1	8	32	0	37	0	42	7
Wicomico	25	2	9	0	0	1	5	3	317	17	15	89	0	100	4	190	24
Worcester	3	1	2	0	0	0	3	3	62	11	12	26	0	159	3	140	8
Area 4 Total	43	10	30	0	0	1	29	40	958	57	71	280	0	587	11	649	96
5. Anne Arundel	31	7	25	0	0	0	78	23	750	31	47	261	1	441	18	672	96
Calvert	2	5	3	0	0	0	3	7	110	6	5	95	0	48	0	71	15
Charles	15	3	11	0	1	0	10	5	241	46	18	70	0	89	2	214	15
Prince George's	80	5	26	0	0	5	157	53	584	29	191	298	6	268	5	867	113
St.Mary's	6	1	0	0	0	0	7	4	116	8	18	66	0	81	1	77	4
Area 5 Total	134	21	65	0	1	5	255	92	1801	120	279	790	7	927	26	1901	243
Out-o-fState	0	0	1	0	0	0	1	2	1	0	3	0	0	5	0	11	1
State Total	643	89	206	1	6	25	924	309	6741	404	1526	2366	54	3346	77	5502	919

Table 24
Intake Cases by Alleged Offenses & County of Jurisdiction for Males
FY 2001

Area	Alcohol Violation	Glue Sniffing	Narcotics Distribution	Narcotic Possession	Bomb Threat	Conspiracy Felony / Misdemeanor	False Alarm	False Report	Fire Violence	Handgun	Harrasment	Loitering	Pager at School	Reckless Endangerment	Telephone Misuse
1. Baltimore City	46	2	1570	853	4	8	4	11	12	75	5	197	0	7	1
Area 1 Total	46	2	1570	853	4	8	4	11	12	75	5	197	0	7	1
2. Baltimore	147	3	86	615	14	3	4	24	10	14	26	5	1	6	31
Carroll	80	0	10	158	1	11	0	11	3	1	20	1	0	3	9
Harford	50	0	41	173	6	2	3	6	1	0	5	0	2	3	7
Howard	193	0	27	191	0	1	0	2	4	4	5	0	3	0	5
Area 2 Total	470	3	164	1137	21	17	7	43	18	19	56	6	6	12	52
3. Allegany	123	0	15	59	6	0	1	1	2	0	1	0	0	1	4
Frederick	90	0	42	170	0	26	1	5	1	0	1	0	1	7	4
Garrett	25	0	5	14	0	0	0	0	0	0	4	0	0	3	1
Montgomery	166	0	54	282	6	12	1	9	2	3	5	1	2	7	5
Washington	95	0	32	77	1	3	1	3	9	0	24	1	0	2	3
Area 3 Total	499	0	148	602	13	41	4	18	14	3	35	2	3	20	17
4. Caroline	16	0	7	24	0	0	0	3	3	0	3	0	0	1	3
Cecil	64	5	13	72	7	2	1	1	1	0	5	0	0	10	7
Dorchester	21	0	15	29	0	0	3	2	2	1	1	0	0	5	3
Kent	22	0	5	25	0	0	0	0	1	0	0	0	1	0	0
Queen Anne's	54	0	9	68	2	0	0	2	2	0	1	0	0	1	3
Somerset	9	0	2	10	0	0	0	10	0	0	0	0	1	3	0
Talbot	41	0	7	30	2	3	0	1	0	0	1	0	0	0	1
Wicomico	49	0	31	95	1	4	2	7	2	3	3	0	3	3	3
Worcester	302	0	37	183	0	0	0	4	0	1	1	0	0	2	4
Area 4 Total	578	5	126	536	12	9	6	30	11	5	15	0	5	25	24
5. Anne Arundel	183	0	107	500	20	11	4	22	10	8	24	0	1	9	9
Calvert	27	0	10	63	0	1	0	4	5	0	0	0	0	2	5
Charles	106	0	17	103	7	4	1	7	5	0	1	0	0	0	5
Prince George's	53	0	126	316	7	2	4	28	6	10	22	3	7	10	6
St.Mary's	88	0	7	60	1	0	1	3	0	0	1	0	0	0	2
Area 5 Total	457	0	267	1042	35	18	10	64	26	18	48	3	8	21	27
Out of State	0	0	0	3	0	0	0	0	0	1	0	0	0	1	0
State Total	2050	10	2275	4173	85	93	31	166	81	121	159	208	22	86	121

Table 24
Intake Cases by Alleged Offenses & County of Jurisdiction for Males
FY 2001

Area	Runaway	Truant	Ungovernable	Other Felony	Tobacco Violation	Traffic Violation	Violation of Probation	Other Misdemeanor	Juris. Total
1. Baltimore City	4	83	89	10	3	114	48	714	7858
Area 1 Total	4	83	89	10	3	114	48	714	7858
2. Baltimore	1	0	3	8	106	65	33	322	5756
Carroll	17	23	19	10	27	32	8	62	937
Harford	1	1	0	10	188	33	3	79	1352
Howard	6	0	0	11	98	72	2	138	1706
Area 2 Total	25	24	22	39	419	202	46	601	9751
3. Allegany	20	3	18	9	35	32	4	54	709
Frederick	19	25	15	12	140	33	0	86	1284
Garrett	0	8	13	3	0	3	0	16	161
Montgomery	0	0	9	32	20	209	10	207	2785
Washington	0	5	79	6	24	20	0	93	986
Area 3 Total	39	41	134	62	219	297	14	456	5925
4. Caroline	21	0	2	1	7	10	0	26	404
Cecil	5	0	1	0	2	13	4	52	710
Dorchester	5	1	0	8	11	20	0	59	463
Kent	3	4	0	3	20	4	3	80	292
Queen Anne's	15	3	4	2	10	5	13	25	405
Somerset	11	0	0	1	2	0	3	21	199
Talbot	10	0	0	5	21	8	1	26	353
Wicomico	4	1	0	20	106	23	0	101	1262
Worcester	17	2	1	1	110	26	1	127	1252
Area 4 Total	91	11	8	41	289	109	25	517	5340
5. Anne Arundel	0	66	2	8	130	134	0	284	4013
Calvert	48	0	0	2	9	18	0	53	617
Charles	0	0	0	2	64	23	4	63	1152
Prince George's	0	35	87	28	65	46	2	339	3889
St.Mary's	8	2	0	4	65	7	0	81	719
Area 5 Total	56	103	89	44	333	228	6	820	10390
Out-of-State	0	0	0	0	0	0	0	5	35
State Total	215	262	342	196	1263	950	139	3113	39299

Table 25
Intake Cases by Alleged Offenses & County of Jurisdiction for Females
FY 2001

Area	Aggravated Assault	Child Abuse	General Sex	Kidnapping	Manslaughter	Murder	Robbery	Sex Felony	Simple Assault	Arson Felony/ Misdemeanors	Auto Theft Felony/ Misdemeanor	Breaking & Entering	Carjacking	Malicious Destruction	Tampering	Theft / Shopping	Trespassing
1. Baltimore City	126	4	8	0	0	1	30	10	522	3	87	62	0	73	0	128	52
Area 1 Total	126	4	8	0	0	1	30	10	522	3	87	62	0	73	0	128	52
2. Baltimore	32	2	2	1	0	1	10	2	651	10	25	33	0	118	2	766	32
Carroll	4	0	0	0	0	0	0	1	57	7	4	10	0	12	1	47	2
Harford	2	0	0	0	0	0	3	0	130	2	5	8	0	17	0	91	4
Howard	3	0	1	0	0	0	2	2	134	3	10	13	0	13	1	145	13
Area 2 Total	41	2	3	1	0	1	15	5	972	22	44	64	0	160	4	1049	51
3. Allegany	0	0	0	0	0	0	0	3	67	0	4	1	0	16	2	60	5
Frederick	0	0	0	0	0	0	0	0	88	0	6	3	0	19	2	78	5
Garrett	0	0	0	1	0	0	0	0	1	0	3	1	0	0	0	6	0
Montgomery	7	0	1	0	0	1	5	0	163	1	10	13	0	17	0	182	13
Washington	0	0	0	0	0	0	1	0	73	1	4	4	0	10	0	94	3
Area 3 Total	7	0	1	1	0	1	6	3	392	2	27	22	0	62	4	420	26
4. Caroline	1	0	1	0	0	0	3	0	48	1	2	2	1	10	0	14	0
Cecil	1	0	0	0	0	0	0	0	85	0	18	1	0	18	0	44	1
Dorchester	1	0	0	0	0	0	0	0	48	0	10	5	0	15	0	20	2
Kent	0	0	0	0	0	0	0	0	30	0	0	1	0	8	1	3	0
Queen Anne's	1	0	0	0	0	0	0	0	20	1	3	0	0	10	0	11	0
Somerset	0	0	0	0	0	0	0	0	32	0	2	1	0	10	0	0	2
Talbot	1	0	0	0	0	0	0	0	25	1	5	6	0	4	0	15	2
Wicomico	3	0	0	0	0	0	0	0	171	4	5	11	0	17	0	115	5
Worcester	1	0	0	0	0	0	0	1	28	1	8	3	0	7	0	74	0
Area 4 Total	9	0	1	0	0	0	3	1	487	8	53	30	1	99	1	296	12
5. Anne Arundel	10	2	2	0	0	0	1	1	381	10	17	44	0	52	5	458	13
Calvert	1	1	0	0	0	0	0	0	36	1	7	11	3	15	0	16	1
Charles	4	0	1	0	0	0	0	0	134	2	4	7	0	12	0	126	3
Prince George's	32	1	4	0	0	1	15	1	248	7	33	24	0	26	1	276	15
St.Mary's	2	1	0	0	0	0	0	0	102	0	6	6	0	7	0	23	1
Area 5 Total	49	5	7	0	0	1	16	2	901	20	67	92	3	112	6	899	33
Out-o-fState	0	0	0	0	0	0	0	0	1	0	0	0	0	0	0	0	1
State Total	232	11	20	2	0	4	70	21	3275	55	278	270	4	506	15	2792	175

**Table 25
Intake Cases by Alleged Offenses & County of Jurisdiction for Females
FY 2001**

Area	Alcohol Violation	Glue Sniffing	Narcotics Distribution	Narcotic Possession	Bomb Threat	Conspiracy Felony / Misdeamenor	False Alarm	False Report	Fire Violence	Handgun	Harrasment	Loitering	Pager at School	Reckless Endangerment	Telephone Misuse
1. Baltimore City	6	0	107	81	0	0	2	9	0	6	6	13	0	0	5
Area 1 Total	6	0	107	81	0	0	2	9	0	6	6	13	0	0	5
2. Baltimore	101	1	7	138	2	2	1	15	0	0	11	0	0	0	20
Carroll	54	0	2	46	1	4	0	7	0	0	3	0	0	0	2
Harford	23	0	3	45	2	3	0	7	0	1	6	0	2	0	3
Howard	117	0	9	59	0	1	0	4	0	0	4	0	0	1	2
Area 2 Total	295	1	21	288	5	10	1	33	0	1	24	0	2	1	27
3. Allegany	74	0	2	27	2	2	0	5	0	0	2	0	0	0	5
Frederick	62	0	7	48	0	7	0	6	0	0	1	0	1	0	0
Garrett	10	0	1	9	0	0	0	2	0	0	1	0	0	0	0
Montgomery	52	0	7	56	1	2	0	6	1	0	0	0	0	0	3
Washington	41	0	6	19	2	3	0	6	0	0	7	0	0	0	2
Area 3 Total	239	0	23	159	5	14	0	25	1	0	11	0	1	0	10
4. Caroline	18	0	0	6	1	1	0	3	0	0	1	0	0	0	2
Cecil	25	0	1	21	0	0	0	6	0	1	1	0	0	3	2
Dorchester	6	0	1	6	1	1	0	1	0	0	1	0	0	1	0
Kent	16	0	0	7	0	0	0	0	0	0	0	0	0	0	0
Queen Anne's	27	0	1	15	0	0	0	3	0	0	0	0	0	1	1
Somerset	12	0	2	1	0	0	0	1	0	0	0	0	2	0	1
Talbot	21	0	1	14	0	1	1	0	0	0	1	0	0	2	0
Wicomico	47	0	2	19	0	1	0	3	0	0	9	0	0	0	2
Worcester	195	0	3	48	0	0	0	8	0	0	0	0	0	0	0
Area 4 Total	367	0	11	137	2	4	1	25	0	1	13	0	2	7	8
5. Anne Arundel	98	0	23	136	1	1	1	7	1	3	11	0	1	0	1
Calvert	10	0	6	13	0	1	0	0	0	0	0	0	0	0	1
Charles	46	0	3	29	1	2	0	5	0	0	2	0	0	0	0
Prince George's	34	0	7	45	1	3	4	10	0	0	2	1	2	0	1
St.Mary's	50	0	2	16	0	0	0	4	0	0	0	0	0	0	5
Area 5 Total	238	0	41	239	3	7	5	26	1	3	15	1	3	0	8
Out of State	0	0	0	1	0	0	0	0	0	0	0	0	0	0	0
State Total	1145	1	203	905	15	35	9	118	2	11	69	14	8	8	58

Table 25
Intake Cases by Alleged Offenses & County of Jurisdiction for Females
FY 2001

Area	Runaway	Truant	Ungovernable	Other Felony	Tobacco Violation	Traffic Violation	Violation of Probation	Other Misdemeanor	Juris. Total
1. Baltimore City	2	64	85	1	0	10	0	239	1742
Area 1 Total	2	64	85	1	0	10	0	239	1742
2. Baltimore	6	0	6	1	60	23	14	121	2216
Carroll	28	13	14	4	7	6	1	17	354
Harford	3	2	0	2	72	4	0	20	460
Howard	8	0	2	0	48	14	0	38	647
Area 2 Total	45	15	22	7	187	47	15	196	3677
3. Allegany	39	1	20	0	27	2	1	9	376
Frederick	65	15	21	2	79	11	1	31	558
Garrett	1	4	6	0	1	1	0	4	52
Montgomery	7	0	10	1	5	55	1	45	665
Washington	4	1	75	1	4	13	1	32	407
Area 3 Total	116	21	132	4	116	82	4	121	2058
4. Caroline	20	2	0	0	1	1	0	5	144
Cecil	10	1	2	0	1	3	3	19	267
Dorchester	18	1	0	0	1	5	0	37	181
Kent	5	4	0	0	11	1	1	25	113
Queen Anne's	21	0	3	2	5	4	1	8	138
Somerset	5	0	0	0	0	1	0	0	72
Talbot	18	0	0	0	7	2	0	9	136
Wicomico	11	3	2	3	50	1	1	40	525
Worcester	36	1	1	0	55	4	1	38	513
Area 4 Total	144	12	8	5	131	22	7	181	2089
5. Anne Arundel	1	53	1	0	44	30	2	63	1474
Calvert	99	1	0	1	4	7	0	16	251
Charles	2	0	0	2	40	6	1	30	462
Prince George's	3	15	67	5	35	11	0	95	1025
St.Mary's	42	1	0	0	45	4	0	34	351
Area 5 Total	147	70	68	8	168	58	3	238	3563
Out-of-State	2	0	1	4	0	0	2	1	13
State Total	456	182	316	29	602	219	31	976	13142

Table 26
Alleged Offense Rates Per 1,000 Population by Offense Category & County of Jurisdiction
FY 2001

Area	10 - 17 Yrs. Population	Person - to - Person	Per 1,000 Population	Property	Per 1,000 Population	Alcohol	Per 1,000 Population	Narcotics	Per 1,000 Population	CINS	Per 1,000 Population	Other	Per 1,000 Population	County of Juris.	County of Juris. Per 1,000 Population
1. Baltimore City	72691	2439	33.6	2666	36.7	52	0.7	2615	36.0	327	4.5	1501	20.6	9600	132.1
Area 1 Total	72691	2453	33.7	2666	36.7	52	0.7	2615	36.0	327	4.5	1501	20.6	9600	132.1
2. Baltimore	82688	2366	28.6	3553	43.0	248	3.0	848	10.3	16	0.2	941	11.4	7972	96.4
Carroll	19513	253	13.0	323	16.6	134	6.9	216	11.1	114	5.8	251	12.9	1291	66.2
Harford	27713	434	15.7	566	20.4	73	2.6	262	9.5	7	0.3	470	17.0	1812	65.4
Howard	30577	546	17.9	737	24.1	310	10.1	286	9.4	16	0.5	458	15.0	2353	77.0
Area 2 Total	160491	3599	22.4	5179	32.3	765	4.8	1612	10.0	153	1.0	2120	13.2	13428	83.7
3. Allegany	7470	167	22.4	312	41.8	197	26.4	103	13.8	101	13.5	205	27.4	1085	145.2
Frederick	24235	348	14.4	459	18.9	152	6.3	267	11.0	160	6.6	456	18.8	1842	76.0
Garrett	3525	30	8.5	48	13.6	35	9.9	29	8.2	32	9.1	39	11.1	213	60.4
Montgomery	98282	770	7.8	1387	14.1	218	2.2	399	4.1	26	0.3	650	6.6	3450	35.1
Washington	14134	253	17.9	445	31.5	136	9.6	134	9.5	164	11.6	261	18.5	1393	98.6
Area 3 Total	147646	1568	10.6	2651	18.0	738	5.0	932	6.3	483	3.3	1611	10.9	7983	54.1
4. Caroline	3858	165	42.8	194	50.3	34	8.8	37	9.6	45	11.7	73	18.9	548	142.0
Cecil	10949	281	25.7	332	30.3	89	8.1	112	10.2	19	1.7	144	13.2	977	89.2
Dorchester	3484	166	47.6	212	60.8	27	7.7	51	14.6	25	7.2	163	46.8	644	184.8
Kent	1962	104	53.0	60	30.6	38	19.4	37	18.9	16	8.2	150	76.5	405	206.4
Queen Anne's	4779	77	16.1	155	32.4	81	16.9	93	19.5	46	9.6	91	19.0	543	113.6
Somerset	2090	84	40.2	89	42.6	21	10.0	15	7.2	16	7.7	46	22.0	271	129.7
Talbot	3486	95	27.3	160	76.0	62	42.0	52	35.0	28	70.0	92	26.4	489	140.3
Wicomico	9718	536	55.2	596	61.3	96	9.9	147	15.1	21	2.2	391	40.2	1787	183.9
Worcester	4588	104	22.7	452	98.5	497	108.3	271	59.1	58	12.6	383	83.5	1765	384.7
Area 4 Total	44914	1612	35.9	2250	50.1	945	21.0	815	18.1	274	6.1	1533	34.1	7429	165.4
5. Anne Arundel	55567	1311	23.6	2166	39.0	281	5.1	766	13.8	123	2.2	840	15.1	5487	98.7
Calvert	10581	168	15.9	291	27.5	37	3.5	92	8.7	148	14.0	132	12.5	868	82.0
Charles	16137	425	26.3	608	37.7	152	9.4	152	9.4	2	0.1	275	17.0	1614	100.0
Prince George's	92559	1212	13.1	2159	23.3	87	0.9	494	5.3	207	2.2	755	8.2	4914	53.1
St.Mary's	10875	239	22.0	298	27.4	138	12.7	85	7.8	53	4.9	257	23.6	1070	98.4
Area 5 Total	185719	3355	18.1	5522	29.7	695	3.7	1589	8.6	533	2.9	2259	12.2	13953	75.1
State Total	611461	12573	120.6	18268	166.7	3195	35.263	7563	79.03	1770	17.7	9024	91.1	52393*	510.3

Note: 1. FY 2000 10 - 17 Year old Population Projections are used for the rate per 1,000 youth calculation, because the 2001 population estimates are not available from the US Census Bureau.
2. Total referrals exclude the 48 Out-Of-State Cases.

Table 27
Rates of Total and Delinquent Referrals per 1,000 Youth Population
FY 2001

County of Residence	2001 10 - 17 Yrs. Population	Total Referrals	Per 1,000 pop.	Delinquent Referrals	Per 1,000 pop.
1. Baltimore City	72691	9600	132.1	9218	126.8
Area 1 Total	72691	9600	132.1	9218	126.8
2. Baltimore	82688	7972	96.4	7542	91.2
Carroll	19513	1291	66.2	1009	51.7
Harford	27713	1812	65.4	1472	53.1
Howard	30577	2353	77.0	1881	61.5
Area 2 Total	160491	13428	83.7	11904	74.2
3. Allegany	7470	1085	145.2	725	97.1
Frederick	24235	1842	76.0	1311	54.1
Garrett	3525	213	60.4	145	41.1
Montgomery	98282	3450	35.1	3181	32.4
Washington	14134	1393	98.6	1065	75.4
Area 3 Total	147646	7983	54.1	6427	43.5
4. Caroline	3858	548	142.0	461	119.5
Cecil	10949	977	89.2	866	79.1
Dorchester	3484	644	184.8	580	166.5
Kent	1962	405	206.4	320	163.1
Queen Anne's	4779	543	113.6	401	83.9
Somerset	2090	271	129.7	232	111.0
Talbot	3486	489	140.3	371	106.4
Wicomico	9718	1787	183.9	1514	155.8
Worcester	4588	1765	384.7	1045	227.8
Area 4 Total	44914	7429	165.4	5790	128.9
5. Anne Arundel	55567	5487	98.7	4909	88.3
Calvert	10581	868	82.0	670	63.3
Charles	16137	1614	100.0	1356	84.0
Prince George's	92559	4914	53.1	4520	48.8
St. Mary's	10875	1070	98.4	769	70.7
Area 5 Total	185719	13953	75.1	12224	65.8
State Total	611461	52393*	89.6	45563*	78.7

Note: FY 2000 10-17 Year old Population Projections are used for the rate per 1,000 youth calculation, because the 2001 population estimates are not yet available from the US Census Bureau.

* Total referrals exclude 48 out of state referrals and total delinquent referrals exclude 45 out-of-state referrals.

Table 28
Court Dispositions of Formalized Cases by Gender
FY 2001

Court Dispositions by Gender	Males	Percent Total	Females	Percent Total	Juris. Total	Percent Total
Probation/prob. to parent/ protective supervision	4401	23.2	854	21.5	5255	22.9
Dismissed/Closed	5020	26.5	870	21.9	5890	25.7
Committed to DJJ for placement	2331	12.3	317	8.0	2648	11.5
Continued case/STET	3140	16.6	869	21.9	4009	17.5
Petition denied by State Attorney*	1074	5.7	292	7.3	1366	6.0
Jurisdiction Waived	19	0.1	1	0.0	20	0.1
Inter-Region/State	70	0.4	20	0.5	90	0.4
Nol Pros	293	1.5	49	1.2	342	1.5
Transfer from one jurisdiction to another	265	1.4	87	2.2	352	1.5
Writ Pending	536	2.8	89	2.2	625	2.7
Others	531	2.8	127	3.2	658	2.9
Disposition Pending	1271	6.7	402	10.1	1673	7.3
State Total	18951	100.0	3977	100.0	22928	100.0

Note: Jurisdiction waiver cases appear to be very low, the reason for this may be a data entry problem for this particular code.

**Table 29
Court Dispositions of Formalized Cases by Race
FY 2001**

Court Dispositions by Race	African - American	Percent Total	Caucasian	Percent Total	Other	Percent Total	Juris. Total
Probation/prob. to parent/ protective supervision	2747	19.9	2365	28.1	143	20.9	5255
Dismissed/Closed	4321	31.2	1410	16.8	159	23.2	5890
Committed to DJJ for placement	1578	11.4	993	11.8	77	11.3	2648
Continued case/STET	1919	13.9	1974	23.5	116	17.0	4009
Petition denied by State Attorney	998	7.2	347	4.1	21	3.1	1366
Jurisdiction Waived	9	0.1	6	0.1	5	0.7	20
Inter-Region/State	57	0.4	29	0.3	4	0.6	90
Nol Pros	141	1.0	194	2.3	7	1.0	342
Transfer from one jurisdiction to another	251	1.8	93	1.1	8	1.2	352
Writ Pending	462	3.3	143	1.7	20	2.9	625
Others	373	2.7	276	3.3	9	1.3	658
Disposition Pending	980	7.1	578	6.9	115	16.8	1673
State Total	13836	100.0	8408	100.0	684	100.0	22928

Note: Jurisdiction waiver cases appear to be very low, the reason for this may be a data entry problem for this particular code