



Maryland Department of Juvenile Justice
One Center Plaza, 120 W. Fayette Street
Baltimore, MD 21201

ANNUAL STATISTICAL REPORT

**FISCAL YEAR
2000**

**Parris N. Glendening
Governor**

**Kathleen Kennedy Townsend
Lt. Governor**

**Bishop L. Robinson
Secretary**

March 2002

INTRODUCTION

The Maryland Department of Juvenile Justice's Office Research and Program Development is pleased to present its 2000 Annual Statistical Report. The Annual Statistical Report brings together, in a single volume, descriptive statistics¹ of the Maryland Department of Juvenile Justice (DJJ). This report serves as an essential reference book. The numbers contained in this report are used in capital planning, three-year planning and budget documents. Executive, professional, and legislative staff as well as the public rely on these statistics. The Annual Statistical Report contains two sections.

Section One of the report provides the intake profile, which includes case-related information from referral to the court disposition stage. In FY 2,000, the Department's Intake Officers handled 54,848 cases. This number of cases represents 35,910 youth. The intake process determines if a youth requires formal court intervention or can be served by pre-court supervision or by processes known as resolving or disapproving the case at intake. A case is counted each time a youth is referred on a new charge during the year.

Section Two provides information about services provided to youths in nonresidential and residential programs. This section contains statistics on DJJ contracted programs, community supervision, and residential services and secure commitment programs. In FY 2000, the Department served 6,091 youths in out of home placements, including secure detention programs. A separate table of contents is provided for Sections One and Two.

¹ The statistics included in this report have been subject to a detailed quality assurance process that involved removing erroneous cases and minimizing the occurrences of "missing" data. Because of this quality assurance review, the statistics presented in this report may slightly vary from those included in earlier Departmental documents.

Section One

Intake Data

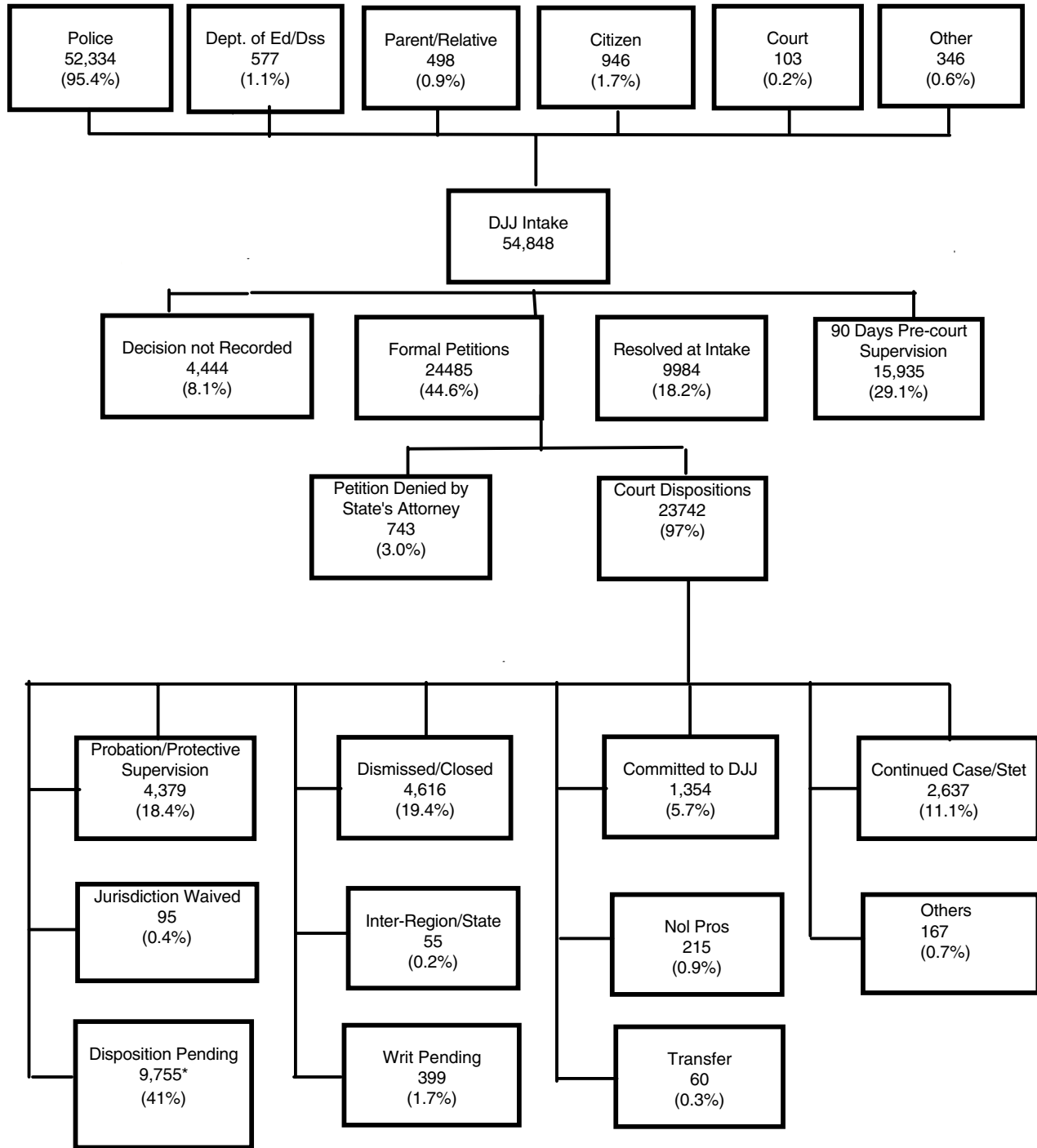
TABLE OF CONTENTS

SECTION ONE

	Page
FLOW CHART OF CASE REFERRALS	i
Table 1 Number and Percent of Intake cases by County of Jurisdiction and by Area: FY 1998 - FY 2000.....	1
Table 2 Manner of Handling Referrals at Intake by Jurisdiction and by Area: FY 2000.....	2
Table 3 Rank Order of Formal Cases by County of Jurisdiction: FY 2000.....	3
Table 4 Number and Percent of Total Intake Cases by Race: FY 2000.....	3
Table 5 Intake Cases by Race and by County of Jurisdiction: FY 2000.....	4
Table 6 Manner of Handling Intake Cases by Race and County of Jurisdiction: FY 2000.....	5
Table 6 Manner of Handling Intake Cases by Race and County of Jurisdiction: FY 2000.....	6
Table 7 Number and Percent of Total Intake Cases by Gender: FY 2000.....	7
Table 8 Manner of Handling Intake Cases by Gender and County of Jurisdiction: FY 2000.....	8
Table 9 Intake Cases by Race, Gender and County of Jurisdiction: FY 2000.....	9
Table 10 Number and Percent of Total Intake Cases by Age: FY 2000.....	10
Table 11 Intake Cases by Age and County of Jurisdiction: FY 2000.....	11
Table 12 Intake Cases by Age and County of Jurisdiction for African-American Youth: FY 2000.....	12
Table 13 Intake Cases by Age and County of Jurisdiction for Caucasian Youth: FY 2000.....	13
Table 14 Intake Cases by Age and County of Jurisdiction for All Other Youth: FY 2000.....	14
Table 15 Intake Cases by Age and County of Jurisdiction for Males: FY 2000.....	15
Table 16 Intake Cases by Age and County of Jurisdiction for Females: FY 2000.....	16
Table 17 Number & Percent of Total Intake Cases by Referral Source: FY 2000.....	17
Table 18 Intake Cases by Referral Source & County of Jurisdiction: FY 2000.....	17
Table 19 Intakes Cases - Offense by Offense Type: FY 1998 - FY 2000.....	18

Table 20	Intake Cases by Alleged Offenses & County of Jurisdiction: FY 2000.....	19
Table 20	Intake Cases by Alleged Offenses & County of Jurisdiction: FY 2000.....	20
Table 20	Intake Cases by Alleged Offenses & County of Jurisdiction: FY 2000.....	21
Table 21	Intake Cases by alleged Offenses & County of Jurisdiction for African-American Youth: FY 2000.....	22
Table 21	Intake Cases by Alleged Offenses & County of Jurisdiction for African-American Youth: FY 2000.....	23
Table 21	Intake Cases by Alleged Offenses & County of Jurisdiction for African-American Youth: FY 2000.....	24
Table 22	Intake Cases by Alleged Offenses & County of Jurisdiction for Caucasian Youth: FY 2000.....	25
Table 22	Intake Cases by Alleged Offenses & County of Jurisdiction for Caucasian Youth: FY 2000.....	26
Table 22	Intake Cases by Alleged Offenses & County of Jurisdiction for Caucasian Youth: FY 2000.....	27
Table 23	Intake Cases by Alleged Offenses and County of Jurisdiction for All Other Youth: FY 2000.....	28
Table 23	Intake Cases by Alleged Offenses and County of Jurisdiction for All Other Youth : FY 2000.....	29
Table 23	Intake Cases by Alleged Offenses and County of Jurisdiction for All Other Youth: FY 2000.....	30
Table 24	Intake Cases by Alleged Offenses and County of Jurisdiction for Males: FY 2000.....	31
Table 24	Intake Cases by Alleged Offenses and County of Jurisdiction for Males : FY 2000.....	32
Table 24	Intake Cases by Alleged Offenses and County of Jurisdiction for Males : FY 2000.....	33
Table 25	Intake Cases by Alleged Offenses and County of Jurisdiction for Females: FY 2000.....	34
Table 25	Intake Cases by Alleged Offenses and County of Jurisdiction for Females : FY 2000.....	35
Table 25	Intake Cases by Alleged Offenses and County of Jurisdiction for Females: FY 2000.....	36
Table 26	Alleged Offense Rates Per 1,000 Population by Offense Category & County of Jurisdiction: FY 2000	37
Table 27	Rates of Total and Delinquent Referrals Per 1,000 Youth Population: FY 2000	38
Table 28	Court Disposition of Formalized Cases by Gender: FY 2000	39
Table 29	Court Disposition of Formalized Cases by Race: FY 2000	40

Flow Chart of Case Referrals in the Maryland Juvenile Justice System FY 2000



Note: * In FY 2000, The Department switched from ISYS to Assist Client Tracking System. Due to this switch on November 1, 1999 for 4,444 or 8.1% of the total cases intake decisions were not recorded and for 9755 cases court disposition were never entered.

Table 1
Number and Percent of Intake Cases by County of Jurisdiction and by Area
FY 1998 - FY 2000

Area	1998 Cases	Percent of Cases	1999 Cases	Percent of Cases	2000 Cases	Percent of Cases	Percent Change 99 to '00
1. Baltimore City	11428	20.5	12088	21.9	10742	19.6	-11.1%
Area 1 Total	11428	20.5	12088	21.9	10742	19.6	-11.1%
2. Baltimore	7934	14.2	7558	13.7	8356	15.2	10.6%
Carroll	1183	2.1	1285	2.3	1560	2.8	21.4%
Harford	2096	3.8	2085	3.8	2080	3.8	-0.2%
Howard	1980	3.6	1553	2.8	1601	2.9	3.1%
Area 2 Total	13193	23.7	12481	22.6	13597	24.8	8.9%
3. Allegany	1343	2.4	1132	2.1	1197	2.2	5.7%
Frederick	2059	3.7	2093	3.8	2321	4.2	10.9%
Garrett	271	0.5	227	0.4	263	0.5	15.9%
Montgomery	4837	8.7	3951	7.2	4213	7.7	6.6%
Washington	1450	2.6	1332	2.4	1355	2.5	1.7%
Area 3 Total	9960	17.9	8735	15.8	9349	17.0	7.0%
4. Caroline	612	1.1	610	1.1	646	1.2	5.9%
Cecil	1145	2.1	1097	2.0	973	1.8	-11.3%
Dorchester	542	1.0	569	1.0	675	1.2	18.6%
Kent	368	0.7	318	0.6	278	0.5	-12.6%
Queen Anne's	414	0.7	456	0.8	401	0.7	-12.1%
Somerset	221	0.4	273	0.5	254	0.5	-7.0%
Talbot	611	1.1	659	1.2	466	0.8	-29.3%
Wicomico	1369	2.5	1580	2.9	2048	3.7	29.6%
Worcester	1624	2.9	1405	2.5	1172	2.1	-16.6%
Area 4 Total	6906	12.4	6967	12.6	6913	12.6	-0.8%
5. Anne Arundel	5730	10.3	5686	10.3	5200	9.5	-8.5%
Calvert	910	1.6	935	1.7	645	1.2	-31.0%
Charles	1637	2.9	1655	3.0	1829	3.3	10.5%
Prince George's	5057	9.1	5601	10.2	5418	9.9	-3.3%
St. Mary's	911	1.6	1002	1.8	1111	2.0	10.9%
Area 5 Total	14245	25.6	14879	27.0	14203	25.9	-4.5%
Out-of-State	0	0.0	0	0.0	44	0.1	0.0%
State Total	55732	100.0	55150	100.0	54848	100.0	-0.5%

Table 2
Manner of Handling Referrals at Intake by Jurisdiction and by Area
FY 2000

Area	Formal Petition	Percent Formal Cases	90 Days Pre - Court Supervision	Percent 90 Days Per - Court Supervision	Resolved at Intake	Percent Resolved at Intake	Decision not Recorded	Percent Decision not Recorded	Juris. Total	Percent of Cases
1. Baltimore City	7737	72.0	1907	17.8	521	4.9	577	5.4	10742	100.0
Area 1 Total	7737	72.0	1907	17.8	521	4.9	577	5.4	10742	100.0
2. Baltimore	4376	52.4	2085	25.0	1562	18.7	333	4.0	8356	100.0
Carroll	369	23.7	336	21.5	108	6.9	747	47.9	1560	100.0
Harford	761	36.6	674	32.4	469	22.5	176	8.5	2080	100.0
Howard	497	31.0	620	38.7	378	23.6	106	6.6	1601	100.0
Area 2 Total	6003	44.1	3715	27.3	2517	18.5	1362	10.0	13597	100.0
3. Allegany	281	23.5	533	44.5	282	23.6	101	8.4	1197	100.0
Frederick	964	41.5	848	36.5	341	14.7	168	7.2	2321	100.0
Garrett	94	35.7	120	45.6	45	17.1	4	1.5	263	100.0
Montgomery	1953	46.4	1239	29.4	767	18.2	254	6.0	4213	100.0
Washington	394	29.1	492	36.3	338	24.9	131	9.7	1355	100.0
Area 3 Total	3686	39.4	3232	34.6	1773	19.0	658	7.0	9349	100.0
4. Caroline	73	11.3	302	46.7	176	27.2	95	14.7	646	100.0
Cecil	329	33.8	289	29.7	279	28.7	76	7.8	973	100.0
Dorchester	178	26.4	198	29.3	181	26.8	118	17.5	675	100.0
Kent	82	29.5	29	10.4	110	39.6	57	20.5	278	100.0
Queen Anne's	91	22.7	138	34.4	144	35.9	28	7.0	401	100.0
Somerset	96	37.8	102	40.2	34	13.4	22	8.7	254	100.0
Talbot	157	33.7	113	24.2	154	33.0	42	9.0	466	100.0
Wicomico	449	21.9	666	32.5	539	26.3	394	19.2	2048	100.0
Worcester	183	15.6	537	45.8	315	26.9	137	11.7	1172	100.0
Area 4 Total	1638	23.7	2374	34.3	1932	27.9	969	14.0	6913	100.0
5. Anne Arundel	1991	38.3	1836	35.3	1152	22.2	221	4.3	5200	100.0
Calvert	375	58.1	95	14.7	149	23.1	26	4.0	645	100.0
Charles	555	30.3	764	41.8	295	16.1	215	11.8	1829	100.0
Prince George's	2090	38.6	1615	29.8	1414	26.1	299	5.5	5418	100.0
St. Mary's	379	34.1	396	35.6	231	20.8	105	9.5	1111	100.0
Area 5 Total	5390	37.9	4706	33.1	3241	22.8	866	6.1	14203	100.0
Out-of-State	31	70.5	1	2.3	0	0.0	12	27.3	44	100.0
State Total	24485	44.6	15935	29.1	9984	18.2	4444	8.1	54848	100.0

Table 3
Rank Order of Formal Cases by County of Jurisdiction
FY 2000

Jurisdictions Area	Formal	% Formal Cases
Baltimore City	7737	72.0
Calvert	375	58.1
Baltimore Co.	4376	52.4
Montgomery	1953	46.4
Frederick	964	41.5
Prince George's	2090	38.6
Anne Arundel	1991	38.3
Somerset	96	37.8
Harford	761	36.6
Garrett	94	35.7
St. Mary's	379	34.1
Cecil	329	33.8
Talbot	157	33.7
Howard	497	31.0
Charles	555	30.3
Kent	394	29.5
Washington	82	29.1
Dorchester	178	26.4
Carroll	369	23.7
Allegeny	281	23.5
Wicomico	449	21.9
Queen Annes	91	22.7
Worcester	183	15.6
Caroline	73	11.3

Table 4
Number and Percent of Intake Cases by Race

FY 2000

Manner of Handling Cases	African-American	% African-American	Caucasian	% Caucasian	Other	% Other	Total	% Total
Formal	14,825	55.1	8,870	33.7	790	47.7	2,4485	44.6
90 Days Pre-Court Supervision	6,025	22.4	9,457	35.9	453	27.4	1,5935	29.1
Resolved at Intake	4,209	15.7	5,457	20.7	318	19.2	9,984	18.2
Decision not Recorded	1815	6.8	2,534	0.96	95	1.0	4,444	8.1
State Total	26,874	100.0	26,318	100.0	1,656	100.0	5,4848	100.0

Table 5
Intake Cases by Race and by County of Jurisdiction
FY 2000

Area	African - American	Percent African - American	Caucasian	Percent Caucasian	Other	Percent Other	Juris. Total *
1. Baltimore City	9456	88.0	1163	10.8	123	1.1	10742
Area 1 Total	9456	88.0	1163	10.8	123	1.1	10742
2. Baltimore	3953	47.3	4272	51.1	131	1.6	8356
Carroll	98	6.3	1453	93.1	9	0.6	1560
Harford	495	23.8	1544	74.2	41	2.0	2080
Howard	475	29.7	1065	66.5	61	3.8	1601
Area 2 Total	5021	36.9	8334	61.3	242	1.8	13597
3. Allegany	89	7.4	1104	92.2	4	0.3	1197
Frederick	507	21.8	1745	75.2	69	3.0	2321
Garrett	4	1.5	259	98.5	0	0.0	263
Montgomery	1912	45.4	1697	40.3	604	14.3	4213
Washington	223	16.5	1077	79.5	55	4.1	1355
Area 3 Total	2735	29.3	5882	62.9	732	7.8	9349
4. Caroline	225	34.8	409	63.3	12	1.9	646
Cecil	69	7.1	891	91.6	13	1.3	973
Dorchester	371	55.0	295	43.7	9	1.3	675
Kent	142	51.1	129	46.4	7	2.5	278
Queen Anne's	82	20.4	318	79.3	1	0.2	401
Somerset	143	56.3	109	42.9	2	0.8	254
Talbot	138	29.6	326	70.0	2	0.4	466
Wicomico	1054	51.5	949	46.3	45	2.2	2048
Worcester	198	16.9	946	80.7	28	2.4	1172
Area 4 Total	2422	35.0	4372	63.2	119	1.7	6913
5. Anne Arundel	1622	31.2	3445	66.3	133	2.6	5200
Calvert	110	17.1	527	81.7	8	1.2	645
Charles	796	43.5	997	54.5	36	2.0	1829
Prince George's	4392	81.1	777	14.3	249	4.6	5418
St. Mary's	296	26.6	803	72.3	12	1.1	1111
Area 5 Total	7216	50.8	6549	46.1	438	3.1	14203
Out-of-State	24	54.5	18	40.9	2	4.5	44
State Total	26874	49.0	26318	48.0	1656	3.0	54848

Note: * Jurisdiction total includes American- Indian, Asian, and Bi-racial groups.

Table 6
Manner of Handling Intake Cases by Race and County of Jurisdiction
FY 2000

Area	African - American					Caucasian				
	Formal	Informal	Resolved at Intake	Decision not Recorded	Total	Formal	Informal	Resolved at Intake	Decision not Recorded	Total
1. Baltimore City	6920	1606	432	498	9456	730	282	78	73	1163
Area 1 Total	6920	1606	432	498	9456	730	282	78	73	1163
2. Baltimore	2368	734	690	161	3953	1940	1318	847	167	4272
Carroll	29	15	6	48	98	334	320	101	698	1453
Harford	267	91	114	23	495	480	571	340	153	1544
Howard	206	140	91	38	475	265	461	277	62	1065
Area 2 Total	2870	980	901	270	5021	3019	2670	1565	1080	8334
3. Allegany	37	23	23	6	89	243	508	258	95	1104
Frederick	236	132	109	30	507	689	702	221	133	1745
Garrett	4	0	0	0	4	90	120	45	4	259
Montgomery	974	457	348	133	1912	674	606	326	91	1697
Washington	88	56	56	23	223	292	417	266	102	1077
Area 3 Total	1339	668	536	192	2735	1988	2353	1116	425	5882
4. Caroline	31	86	57	51	225	42	212	113	42	409
Cecil	30	15	22	2	69	293	272	252	74	891
Dorchester	101	100	111	59	371	76	95	65	59	295
Kent	50	15	53	24	142	30	13	56	30	129
Queen Anne's	25	25	20	12	82	66	112	124	16	318
Somerset	66	41	22	14	143	29	61	12	7	109
Talbot	60	37	31	10	138	97	76	121	32	326
Wicomico	253	317	288	196	1054	176	340	245	188	949
Worcester	49	66	54	29	198	131	459	252	104	946
Area 4 Total	665	702	658	397	2422	940	1640	1240	552	4372
5. Anne Arundel	799	393	358	72	1622	1143	1393	764	145	3445
Calvert	65	20	18	7	110	308	74	126	19	527
Charles	313	294	101	88	796	223	460	187	127	997
St. Mary's	100	94	70	32	296	276	300	155	72	803
Prince George's	1739	1267	1135	251	4392	229	285	226	37	777
Area 5 Total	3016	2068	1682	450	7216	2179	2512	1458	400	6549
Out-of-State	15	1	0	8	24	14	0	0	4	18
State Total	14825	6025	4209	1815	26874	8870	9457	5457	2534	26318

Table 6
Manner of Handling Intake Cases by Race and County of Jurisdiction
FY 2000

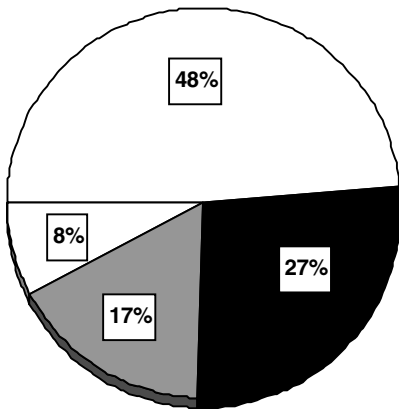
All Others						
Area	Formal	Informal	Resolved at Intake	Decision Not Recorded	Total	Juris. Total *
1. Baltimore City	87	19	11	6	123	10742
Area 1 Total	87	19	11	6	123	10742
2. Baltimore	68	33	25	5	131	8356
Carroll	6	1	1	1	9	1560
Harford	14	12	15	0	41	2080
Howard	26	19	10	6	61	1601
Area 2 Total	114	65	51	12	242	13597
3. Allegany	1	2	1	0	4	1197
Frederick	39	14	11	5	69	2321
Garrett	0	0	0	0	0	263
Montgomery	305	176	93	30	604	4213
Washington	14	19	16	6	55	1355
Area 3 Total	359	211	121	41	732	9349
4. Caroline	0	4	6	2	12	646
Cecil	6	2	5	0	13	973
Dorchester	1	3	5	0	9	675
Kent	2	1	1	3	7	278
Queen Anne's	0	1	0	0	1	401
Somerset	1	0	0	1	2	254
Talbot	0	0	2	0	2	466
Wicomico	20	9	6	10	45	2048
Worcester	3	12	9	4	28	1172
Area 4 Total	33	32	34	20	119	6913
5. Anne Arundel	49	50	30	4	133	5200
Calvert	2	1	5	0	8	645
Charles	19	10	7	0	36	1829
Prince George's	122	63	53	11	249	5418
St. Mary's	3	2	6	1	12	1111
Area 5 Total	195	126	101	16	438	14203
Out-of-State	2	0	0	0	2	44
State Total	790	453	318	95	1656	54848

Note: * Jurisdiction total include American-Indian, Asian and Bi-racial groups.

Table 7
Number and Percent of Total Cases by Gender
FY 2000

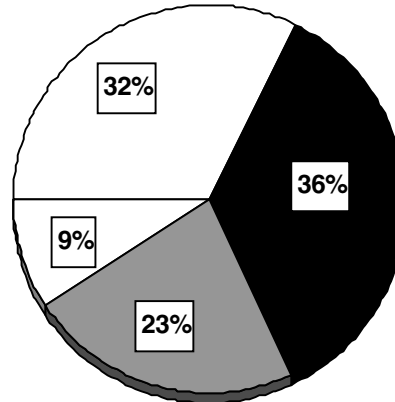
Manner of Handling Cases	Males	Percent Males	Females	Percent Females	Total
Formal	20204	48.6%	4281	32.2%	24485
90 Days Pre-Court Supervision	11174	26.9%	4761	35.8%	15935
Resolved at Intake	6944	16.7%	3040	22.8%	9984
Decision not recorded	3221	7.8%	1223	9.2%	4444
State Total	41543	100.0%	13305	100.0%	54848

Males



Formal
 90 Days Pre-Court
 Resolved
 Decision not recorded

Females



Formal
 90 Days Pre-Court
 Resolved
 Decision not recorded

Table 8
Manner of Handling Intake Cases by Gender and County of Jurisdiction
FY 2000

Area	Male						Female						Juris. Total
	Formal	Informal	Resolved at Intake	Decision not Recorded	Total	Percent Juris. Total	Formal	Informal	Resolved at Intake	Decision not Recorded	Total	Percent Juris. Total	
1. Baltimore City	6617	1289	392	454	8752	81.5%	1120	618	129	123	1990	18.5%	10742
Area 1 Total	6617	1289	392	454	8752	81.5%	1120	618	129	123	1990	18.5%	10742
Baltimore	3377	1418	1107	253	6155	73.7%	999	667	455	80	2201	26.3%	8356
Carroll	298	253	90	511	1152	73.8%	71	83	18	236	408	26.2%	1560
Harford	665	460	306	142	1573	75.6%	96	214	163	34	507	24.4%	2080
Howard	390	439	264	76	1169	73.0%	107	181	114	30	432	27.0%	1601
Area 2 Total	4730	2570	1767	982	10049	73.9%	1273	1145	750	380	3548	26.1%	13597
3. Allegany	213	333	179	63	788	65.8%	68	200	103	38	409	34.2%	1197
Frederick	792	593	224	131	1740	75.0%	172	255	117	37	581	25.0%	2321
Garrett	88	81	37	4	210	79.8%	6	39	8	0	53	20.2%	263
Montgomery	1670	931	565	201	3367	79.9%	283	308	202	53	846	20.1%	4213
Washington	329	337	214	87	967	71.4%	65	155	124	44	388	28.6%	1355
Area 3 Total	3092	2275	1219	486	7072	75.6%	594	957	554	172	2277	24.4%	9349
4. Caroline	62	229	129	67	487	75.4%	11	73	47	28	159	24.6%	646
Cecil	273	190	189	46	698	71.7%	56	99	90	30	275	28.3%	973
Dorchester	156	150	122	67	495	73.3%	22	48	59	51	180	26.7%	675
Kent	59	18	67	43	187	67.3%	23	11	43	14	91	32.7%	278
Queen Anne's	83	111	107	26	327	81.5%	8	27	37	2	74	18.5%	401
Somerset	84	73	22	14	193	76.0%	12	29	12	8	61	24.0%	254
Talbot	113	80	112	35	340	73.0%	44	33	42	7	126	27.0%	466
Wicomico	370	442	332	270	1414	69.0%	79	224	207	124	634	31.0%	2048
Worcester	158	397	224	95	874	74.6%	25	140	91	42	298	25.4%	1172
Area 4 Total	1358	1690	1304	663	5015	72.5%	280	684	628	306	1898	27.5%	6913
5. Anne Arundel	1558	1300	819	158	3835	73.8%	433	536	333	63	1365	26.3%	5200
Calvert	306	71	80	19	476	73.8%	69	24	69	7	169	26.2%	645
Charles	443	518	193	159	1313	71.8%	112	246	102	56	516	28.2%	1829
Prince George's	1764	1186	1022	227	4199	77.5%	326	429	392	72	1219	22.5%	5418
St. Mary's	313	274	148	63	798	71.8%	66	122	83	42	313	28.2%	1111
Area 5 Total	4384	3349	2262	626	10621	74.8%	1006	1357	979	240	3582	25.2%	14203
Out-of-State	23	1	0	10	34	77.3%	8	0	0	2	10	22.7%	44
State Total	20204	11174	6944	3221	41543	75.7%	4281	4761	3040	1223	13305	24.3%	54848

Table 9
Intake Cases by Race, Gender, and County of Jurisdiction
FY 2000

Area	African - American					Caucasian					Hispanic				
	Male	Percent Total	Female	Percent Total	Juris. Total	Male	Percent Total	Female	Percent Total	Juris. Total	Male	Percent Total	Female	Percent Total	Juris. Total *
1. Baltimore City	7803	82.5%	1653	17.5%	9456	871	74.9%	292	25.1%	1163	78	63.4%	45	36.6%	123
Area 1 Total	7803	82.5%	1653	17.5%	9456	871	74.9%	292	25.1%	1163	78	63.4%	45	36.6%	123
2. Baltimore	2852	72.1%	1101	27.9%	3953	3217	75.3%	1055	24.7%	4272	86	65.6%	45	34.4%	131
Carroll	70	71.4%	28	28.6%	98	1074	73.9%	379	26.1%	1453	8	88.9%	1	11.1%	9
Harford	399	80.6%	96	19.4%	495	1145	74.2%	399	25.8%	1544	29	70.7%	12	29.3%	41
Howard	366	77.1%	109	22.9%	475	753	70.7%	312	29.3%	1065	50	82.0%	11	18.0%	61
Area 2 Total	3687	73.4%	1334	26.6%	5021	6189	74.3%	2145	25.7%	8334	173	71.5%	69	28.5%	242
3. Allegany	70	78.7%	19	21.3%	89	717	64.9%	387	35.1%	1104	1	0.0%	3	0.0%	4
Frederick	387	76.3%	120	23.7%	507	1295	74.2%	450	25.8%	1745	58	84.1%	11	15.9%	69
Garrett	4	100.0%	0	0.0%	4	206	79.5%	53	20.5%	259	0	0.0%	0	0.0%	0
Montgomery	1544	80.8%	368	19.2%	1912	1322	77.9%	375	22.1%	1697	501	0.0%	103	0.0%	604
Washington	164	73.5%	59	26.5%	223	770	71.5%	307	28.5%	1077	33	60.0%	22	40.0%	55
Area 3 Total	2169	79.3%	566	20.7%	2735	4310	73.3%	1572	26.7%	5882	593	81.0%	139	19.0%	732
4. Caroline	158	70.2%	67	29.8%	225	320	78.2%	89	21.8%	409	9	75.0%	3	25.0%	12
Cecil	57	82.6%	12	17.4%	69	632	70.9%	259	29.1%	891	9	69.2%	4	30.8%	13
Dorchester	250	67.4%	121	32.6%	371	239	81.0%	56	19.0%	295	6	0.0%	3	0.0%	9
Kent	98	69.0%	44	31.0%	142	82	63.6%	47	36.4%	129	7	0.0%	0	0.0%	7
Queen Anne's	72	87.8%	10	12.2%	82	255	80.2%	63	19.8%	318	0	0.0%	1	0.0%	1
Somerset	99	69.2%	44	30.8%	143	92	84.4%	17	15.6%	109	2	0.0%	0	0.0%	2
Talbot	103	74.6%	35	25.4%	138	237	72.7%	89	27.3%	326	0	0.0%	2	0.0%	2
Wicomico	726	68.9%	328	31.1%	1054	654	68.9%	295	31.1%	949	34	75.6%	11	24.4%	45
Worcester	146	73.7%	52	26.3%	198	708	74.8%	238	25.2%	946	20	71.4%	8	28.6%	28
Area 4 Total	1709	70.6%	713	29.4%	2422	3219	73.6%	1153	26.4%	4372	87	73.1%	32	26.9%	119
5. Anne Arundel	1219	75.2%	403	24.8%	1622	2517	73.1%	928	26.9%	3445	99	74.4%	34	25.6%	133
Calvert	96	87.3%	14	12.7%	110	378	71.7%	149	28.3%	527	2	0.0%	6	0.0%	8
Charles	587	73.7%	209	26.3%	796	707	70.9%	290	29.1%	997	19	52.8%	17	47.2%	36
Prince George's	3392	77.2%	1000	22.8%	4392	596	76.7%	181	23.3%	777	211	0.0%	38	15.3%	249
St. Mary's	205	69.3%	91	30.7%	296	591	73.6%	212	26.4%	803	2	0.0%	10	0.0%	12
Area 5 Total	5499	76.2%	1717	23.8%	7216	4789	73.1%	1760	26.9%	6549	333	76.0%	105	24.0%	438
Out-of-State	17	70.8%	7	29.2%	24	15	83.3%	3	16.7%	18	2	0.0%	0	0.0%	2
State Total	20884	77.7%	5990	22.3%	26874	19393	73.7%	6925	26.3%	26318	1266	76.4%	390	23.6%	1656

Note: * Jurisdiction total includes American-Indian, Asian, and Bi-racial groups.

**Table 10
Number and Percent of Total Intake Cases by Age**

Age of Youth	1998 Cases	Percent Cases	1999 Cases	Percent Cases	2000 Cases	Percent Cases	% Change '99 to '00
Under 10	925	1.7	896	1.6	1188	2.2	32.6
ten	797	1.4	879	1.6	750	1.4	-14.7
eleven	1458	2.6	1467	2.7	1475	2.7	0.5
twelve	2771	5.0	2749	5.0	2716	5.0	-1.2
thirteen	4786	8.6	4850	8.8	4549	8.3	-6.2
fourteen	7526	13.5	7416	13.4	7423	13.5	0.1
fifteen	10335	18.5	10183	18.5	10013	18.3	-1.7
sixteen	12049	21.6	11886	21.6	11622	21.2	-2.2
seventeen	13573	24.4	13241	24.0	13193	24.1	-0.4
eighteen	1331	2.4	1389	2.5	1373	2.5	-1.2
other/unknown	181	0.3	194	0.4	546	1.0	181.4
State Total	55732	100.0	55150	100.0	54848	100.0	-0.5

**Total Intake Cases by Age
FY 2000**

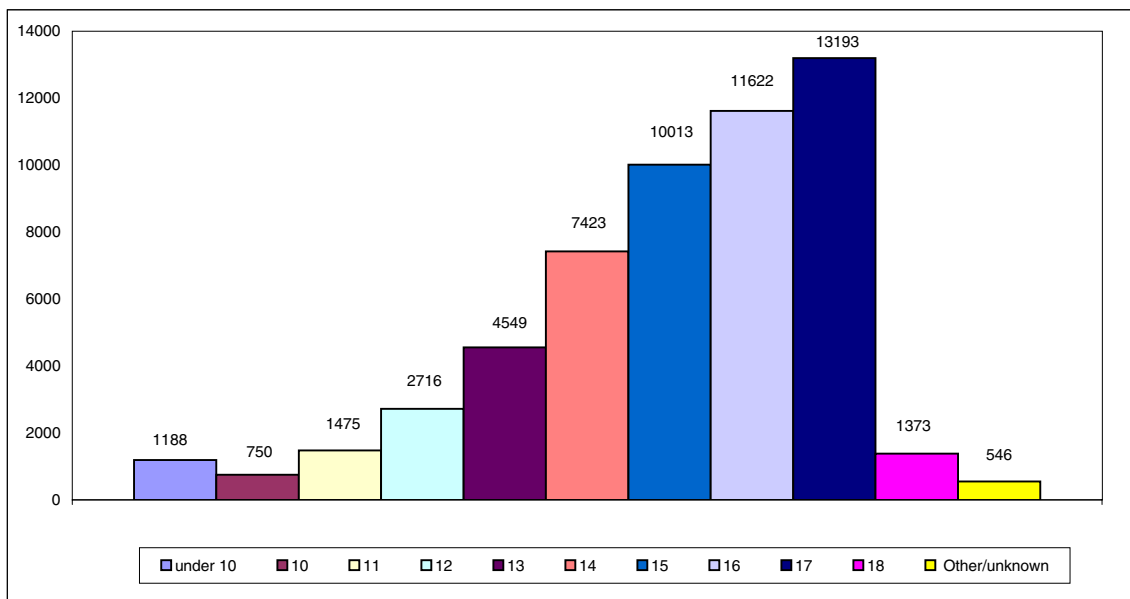


Table 11
Intake Cases by Age and County of Jurisdiction
FY 2000

Area	<10	10	11	12	13	14	15	16	17	18	Over 18	age/ unknown	Juris. Total
1. Baltimore City	269	158	329	604	1056	1579	2050	2088	2268	230	14	97	10742
Area 1 Total	269	158	329	604	1056	1579	2050	2088	2268	230	14	97	10742
2. Baltimore	163	151	266	454	731	1132	1484	1811	1918	165	13	68	8356
Carroll	32	15	29	45	116	240	282	360	380	35	2	24	1560
Harford	24	19	41	70	99	224	381	532	625	48	3	14	2080
Howard	27	13	32	59	95	188	250	376	459	86	3	13	1601
Area 2 Total	246	198	368	628	1041	1784	2397	3079	3382	334	21	119	13597
3. Allegany	45	27	31	49	115	149	214	250	286	26	0	5	1197
Frederick	37	19	41	115	157	350	397	505	614	62	2	22	2321
Garrett	5	2	5	9	34	41	49	49	59	10	0	0	263
Montgomery	76	28	77	193	271	494	716	907	1204	187	11	49	4213
Washington	33	18	44	90	144	188	219	270	319	23	0	7	1355
Area 3 Total	196	94	198	456	721	1222	1595	1981	2482	308	13	83	9349
4. Caroline	22	16	33	45	70	104	86	108	137	22	0	3	646
Cecil	24	15	38	64	79	106	199	194	216	24	2	12	973
Dorchester	37	25	17	34	91	95	112	117	139	3	0	5	675
Kent	5	8	5	9	17	39	63	55	77	0	0	0	278
Queen Anne's	8	8	2	8	26	75	73	87	106	6	0	2	401
Somerset	8	9	4	23	29	40	40	46	53	1	0	1	254
Talbot	8	3	19	20	33	56	77	99	134	16	0	1	466
Wicomico	56	35	97	105	181	342	395	401	382	34	10	10	2048
Worcester	8	7	10	23	39	110	176	258	508	25	0	8	1172
Area 4 Total	176	126	225	331	565	967	1221	1365	1752	131	12	42	6913
5. Anne Arundel	96	61	162	325	462	734	1000	1149	1090	75	10	36	5200
Calvert	9	7	7	45	68	68	94	120	206	16	1	4	645
Charles	52	26	60	81	154	230	342	395	432	40	9	8	1829
Prince George's	127	55	95	197	395	693	1115	1159	1315	198	13	56	5418
St. Mary's	17	25	30	46	82	139	191	274	260	39	0	8	1111
Area 5 Total	301	174	354	694	1161	1864	2742	3097	3303	368	33	112	14203
Out-of-State	0	0	1	3	5	7	8	12	6	2	0	0	44
State Total	1188	750	1475	2716	4549	7423	10013	11622	13193	1373	93	453	54848

Table 12
Intake Cases by Age and County of Jurisdiction for African-American Youth
FY 2000

Area	<10	10	11	12	13	14	15	16	17	18	Over 18	age/ unknown	Juris. Total
1. Baltimore City	230	148	299	525	940	1411	1790	1858	1953	209	14	79	9456
Area 1 Total	230	148	299	525	940	1411	1790	1858	1953	209	14	79	9456
2. Baltimore	86	82	138	250	402	584	679	832	802	67	7	24	3953
Carroll	2	1	1	5	5	18	20	25	19	2	0	0	98
Harford	8	5	12	27	35	56	98	93	139	16	1	5	495
Howard	6	3	24	37	39	70	81	99	90	18	1	7	475
Area 2 Total	102	91	175	319	481	728	878	1049	1050	103	9	36	5021
3. Allegany	8	4	5	4	4	6	17	18	23	0	0	0	89
Frederick	16	4	5	29	37	74	109	106	114	8	0	5	507
Garrett	0	0	0	0	0	0	2	2	0	0	0	0	4
Montgomery	41	12	42	110	144	215	353	439	462	60	2	32	1912
Washington	3	1	18	14	31	39	17	35	58	7	0	0	223
Area 3 Total	68	21	70	157	216	334	498	600	657	75	2	37	2735
4. Caroline	4	6	15	28	33	36	23	41	37	1	0	1	225
Cecil	3	3	5	10	3	6	8	9	17	4	1	0	69
Dorchester	20	19	13	19	65	71	31	57	72	1	0	3	371
Kent	3	5	3	6	14	14	38	29	30	0	0	0	142
Queen Anne's	2	4	2	2	2	10	16	11	28	3	0	2	82
Somerset	6	6	3	16	24	29	23	22	12	1	0	1	143
Talbot	6	0	11	9	19	17	30	18	25	3	0	0	138
Wicomico	44	23	71	62	119	193	192	171	152	12	10	5	1054
Worcester	4	3	3	7	16	22	31	36	71	4	0	1	198
Area 4 Total	92	69	126	159	295	398	392	394	444	29	11	13	2422
5. Anne Arundel	45	28	86	122	185	230	301	288	297	25	3	12	1622
Calvert	4	4	0	13	10	7	21	16	29	4	1	1	110
Charles	38	15	38	44	68	86	156	162	165	12	8	4	796
Prince George's	102	47	81	169	329	574	925	919	1049	152	8	37	4392
St. Mary's	7	15	10	14	31	53	37	64	54	9	0	2	296
Area 5 Total	196	109	215	362	623	950	1440	1449	1594	202	20	56	7216
Out-of-State	0	0	1	1	0	3	7	7	3	2	0	0	24
State Total	688	438	886	1523	2555	3824	5005	5357	5701	620	56	221	26874

Table 13
Intake Cases by Age and County of Jurisdiction for Caucasian Youth
FY 2000

Area	<10	10	11	12	13	14	15	16	17	18	over 18	age unknown	Juris. Total
1. Baltimore City	22	10	27	67	112	148	238	209	295	19	0	16	1163
Area 1 Total	22	10	27	67	112	148	238	209	295	19	0	16	1163
2. Baltimore	77	67	123	195	323	533	772	949	1099	96	6	32	4272
Carroll	30	14	28	40	111	222	261	333	356	33	2	23	1453
Harford	13	13	28	41	62	161	278	430	477	30	2	9	1544
Howard	17	9	7	21	56	108	157	268	351	64	2	5	1065
Area 2 Total	137	103	186	297	552	1024	1468	1980	2283	223	12	69	8334
3. Allegany	37	23	26	45	110	142	196	232	262	26	0	5	1104
Frederick	21	14	36	82	117	267	273	388	476	52	2	17	1745
Garrett	5	2	5	9	34	41	47	47	59	10	0	0	259
Montgomery	20	15	27	67	95	184	270	365	545	91	6	12	1697
Washington	30	16	24	69	109	142	196	223	246	15	0	7	1077
Area 3 Total	113	70	118	272	465	776	982	1255	1588	194	8	41	5882
4. Caroline	18	8	16	17	37	65	59	66	100	21	0	2	409
Cecil	20	12	33	53	76	99	187	184	196	18	1	12	891
Dorchester	15	6	4	15	26	23	79	57	66	2	0	2	295
Kent	1	3	2	3	2	25	22	26	45	0	0	0	129
Queen Anne's	6	4	0	6	24	65	57	75	78	3	0	0	318
Somerset	2	3	1	7	5	11	16	24	40	0	0	0	109
Talbot	2	3	8	11	14	39	47	81	107	13	0	1	326
Wicomico	12	12	25	43	60	143	189	222	216	22	0	5	949
Worcester	4	3	7	13	23	84	143	217	424	21	0	7	946
Area 4 Total	80	54	96	168	267	554	799	952	1272	100	1	29	4372
5. Anne Arundel	48	31	72	197	267	480	668	835	770	47	7	23	3445
Calvert	5	3	7	32	57	61	72	104	171	12	0	3	527
Charles	14	11	22	35	82	144	181	220	256	27	1	4	997
Prince George's	20	7	11	18	49	95	140	185	195	36	3	18	777
St. Mary's	10	10	20	32	51	80	153	208	203	30	0	6	803
Area 5 Total	97	62	132	314	506	860	1214	1552	1595	152	11	54	6549
Out-of-State	0	0	0	2	5	4	1	3	3	0	0	0	18
State Total	449	299	559	1120	1907	3366	4702	5951	7036	688	32	209	26318

Table 14
Intake Cases by Age and County of Jurisdiction for All Other Youth
FY 2000

Area	<10	10	11	12	13	14	15	16	17	18	over 18	age/ unknown	Juris. Total
1. Baltimore City	17	0	3	12	4	20	22	21	20	2	0	2	123
Area 1 Total	17	0	3	12	4	20	22	21	20	2	0	2	123
2. Baltimore	0	2	5	9	6	15	33	30	17	2	0	12	131
Carroll	0	0	0	0	0	0	1	2	5	0	0	1	9
Harford	3	1	1	2	2	7	5	9	9	2	0	0	41
Howard	4	1	1	1	0	10	12	9	18	4	0	1	61
Area 2 Total	7	4	7	12	8	32	51	50	49	8	0	14	242
3. Allegany	0	0	0	0	1	1	1	0	1	0	0	0	4
Frederick	0	1	0	4	3	9	15	11	24	2	0	0	69
Garrett	0	0	0	0	0	0	0	0	0	0	0	0	0
Montgomery	15	1	8	16	32	95	93	103	197	36	3	5	604
Washington	0	1	2	7	4	7	6	12	15	1	0	0	55
Area 3 Total	15	3	10	27	40	112	115	126	237	39	3	5	732
4. Caroline	0	2	2	0	0	3	4	1	0	0	0	0	12
Cecil	1	0	0	1	0	1	4	1	3	2	0	0	13
Dorchester	2	0	0	0	0	1	2	3	1	0	0	0	9
Kent	1	0	0	0	1	0	3	0	2	0	0	0	7
Queen Anne's	0	0	0	0	0	0	0	1	0	0	0	0	1
Somerset	0	0	0	0	0	0	1	0	1	0	0	0	2
Talbot	0	0	0	0	0	0	0	0	2	0	0	0	2
Wicomico	0	0	1	0	2	6	14	8	14	0	0	0	45
Worcester	0	1	0	3	0	4	2	5	13	0	0	0	28
Area 4 Total	4	3	3	4	3	15	30	19	36	2	0	0	119
5. Anne Arundel	3	2	4	6	10	24	31	26	23	3	0	1	133
Calvert	0	0	0	0	1	0	1	0	6	0	0	0	8
Charles	0	0	0	2	4	0	5	13	11	1	0	0	36
Prince George's	5	1	3	10	17	24	50	55	71	10	2	1	249
St. Mary's	0	0	0	0	0	6	1	2	3	0	0	0	12
Area 5 Total	8	3	7	18	32	54	88	96	114	14	2	2	438
Out-of-State	0	0	0	0	0	0	0	2	0	0	0	2	2
State Total	51	13	30	73	87	233	306	314	456	65	5	23	1656

Table 15
Intake Cases by Age and County of Jurisdiction for Males
FY 2000

Area	<10	10	11	12	13	14	15	16	17	18	over 18	age/ unknown	Juris. Total
1. Baltimore City	173	143	274	447	796	1257	1679	1762	1941	192	17	71	8752
Area 1 Total	173	143	274	447	796	1257	1679	1762	1941	192	17	71	8752
2. Baltimore	128	123	204	331	494	801	1113	1335	1437	130	16	41	6155
Carroll	11	10	19	35	98	164	209	252	300	33	1	19	1152
Harford	16	12	29	48	71	165	273	396	505	41	3	14	1573
Howard	12	11	31	46	65	143	170	271	340	60	2	18	1169
Area 2 Total	167	156	283	460	728	1273	1765	2254	2582	264	22	92	10049
3. Allegany	38	24	21	30	62	83	138	162	205	0	0	5	788
Frederick	31	15	35	81	116	246	299	368	488	44	2	15	1740
Garrett	2	1	4	7	27	31	38	39	51	8	0	2	210
Montgomery	34	24	55	160	204	411	569	706	997	154	6	47	3367
Washington	14	14	34	65	96	122	156	196	241	15	0	14	967
Area 3 Total	119	78	149	343	505	893	1200	1471	1982	221	8	83	7072
4. Caroline	14	15	29	33	55	79	55	82	102	20	0	3	487
Cecil	13	11	27	47	57	64	137	140	165	20	2	15	698
Dorchester	22	21	11	24	62	60	89	89	107	3	0	7	495
Kent	4	8	4	7	14	22	41	33	54	0	0	0	187
Queen Anne's	7	8	2	7	23	59	54	71	89	5	0	2	327
Somerset	6	8	3	15	22	30	31	34	43	0	0	1	193
Talbot	8	2	18	13	23	37	48	79	100	11	0	1	340
Wicomico	38	23	68	66	125	241	249	286	26	0	0	10	1414
Worcester	4	7	9	15	35	74	116	180	405	22	0	7	874
Area 4 Total	116	103	171	227	416	666	820	994	1091	81	2	46	5015
5. Anne Arundel	65	47	139	248	342	520	714	847	818	51	9	35	3835
Calvert	5	7	7	34	45	50	68	89	153	14	2	2	476
Charles	41	25	45	68	90	132	235	294	325	37	2	13	1313
Prince George's	54	45	70	147	297	491	871	923	1053	165	13	69	4199
St. Mary's	2	22	24	41	54	86	133	200	191	28	0	7	798
Area 5 Total	167	146	285	538	828	1279	2021	2353	2540	295	26	126	10621
Out-of-State	0	0	0	2	3	7	5	9	6	2	0	0	34
State Total	742	626	1162	2017	3276	5375	7490	8843	10142	1055	75	418	41543

Table 16
Intake Cases by Age and County of Jurisdiction for Females
FY 2000

Area	<10	10	11	12	13	14	15	16	17	18	over 18	age/ unknown	Juris. Total
1. Baltimore City	27	15	55	158	267	333	381	335	337	41	2	39	1990
Area 1 Total	27	15	55	158	267	333	381	335	337	41	2	39	1990
2. Baltimore	28	28	62	123	237	331	371	476	481	35	2	27	2201
Carroll	5	5	10	10	18	76	73	108	81	2	1	19	408
Harford	1	7	12	22	28	59	108	136	120	7	0	7	507
Howard	2	2	1	13	30	45	80	105	119	26	1	8	432
Area 2 Total	36	42	85	168	313	511	632	825	801	70	4	61	3548
3. Allegany	5	3	10	19	53	66	76	88	81	6	0	2	409
Frederick	6	4	6	34	41	104	98	137	126	18	1	6	581
Garrett	1	1	1	2	7	10	11	10	8	2	0	0	53
Montgomery	8	4	22	33	67	83	147	201	207	33	6	35	846
Washington	2	4	10	25	48	66	63	74	78	8	0	10	388
Area 3 Total	22	16	49	113	216	329	395	510	500	67	7	53	2277
4. Caroline	2	5	4	4	20	16	32	25	31	18	0	2	159
Cecil	3	4	11	17	22	42	62	54	51	4	0	5	275
Dorchester	4	4	6	10	29	35	23	28	32	0	0	9	180
Kent	1	0	1	2	3	17	22	22	23	0	0	0	91
Queen Anne's	0	0	0	1	3	16	19	16	17	1	0	1	74
Somerset	2	1	1	8	7	10	9	12	10	1	0	0	61
Talbot	0	1	1	7	10	19	29	20	34	5	0	0	126
Wicomico	10	12	29	39	56	101	146	115	100	8	10	8	634
Worcester	1	0	1	8	4	36	60	78	103	3	0	4	298
Area 4 Total	23	27	54	96	154	292	402	370	401	40	10	29	1898
5. Anne Arundel	9	14	23	77	120	214	286	302	272	24	2	22	1365
Calvert	1	0	0	11	22	18	26	31	53	2	0	5	169
Charles	1	1	15	13	64	98	107	101	107	3	1	5	516
Prince George's	8	10	25	50	98	202	244	236	262	33	2	49	1219
St. Mary's	5	3	6	5	28	53	58	74	69	11	0	1	313
Area 5 Total	24	28	69	156	332	585	721	744	763	73	5	82	3582
Out-of-State	0	0	1	1	2	0	3	3	0	0	0	10	10
State Total	132	128	313	692	1284	2050	2534	2787	2802	291	28	264	13305

Table 17
Number & Percent of Total Intake Cases by Referral Source
FY 2000

Referral Source	FY 1999	Percent
Police	52334	95.5
Maryland State Agencies	577	1.1
Citizen	946	1.7
Parent/Relative	498	0.9
Court	103	0.2
Other	346	0.6
State Total	54804	100.0

Table 18
Intake Cases by Referral Source & County of Jurisdiction
FY 2000

Area	Police	Maryland State Agencies	Citizen	Parent / Relative	Court	Other	Juris. Total
1. Baltimore City	10031	196	387	102	2	25	10743
Area 1 Total	10031	196	387	102	2	25	10743
2. Baltimore	8313	4	3	15	1	20	8356
Carroll	1403	72	47	32	0	6	1560
Harford	2039	6	0	2	1	32	2080
Howard	1581	2	12	2	0	4	1601
Area 2 Total	13336	84	62	51	2	62	13597
3. Allegany	1161	0	10	25	1	0	1197
Frederick	2172	29	14	29	34	43	2321
Garrett	184	24	12	35	5	3	263
Montgomery	4123	2	1	18	39	30	4213
Washington	1012	1	183	155	0	4	1355
Area 3 Total	8652	56	220	262	79	80	9349
4. Caroline	628	1	3	4	0	10	646
Cecil	945	0	10	2	0	16	973
Dorchester	621	0	51	0	1	2	675
Kent	274	0	3	0	0	1	278
Queen Anne's	386	7	4	2	1	1	401
Somerset	254	0	0	0	0	0	254
Talbot	434	20	5	0	3	4	466
Wicomico	2043	0	1	1	0	3	2048
Worcester	1156	1	0	1	1	13	1172
Area 4 Total	6741	29	77	10	6	50	6913
5. Anne Arundel	5100	75	1	2	0	22	5200
Calvert	641	0	1	1	0	1	644
Charles	1789	7	1	2	2	28	1829
Prince George's	4950	125	197	67	12	67	5418
St. Mary's	1094	5	0	1	0	11	1111
Area 5 Total	13574	212	200	73	14	129	14202
State Total	52334	577	946	498	103	346	54804 *

Note: * Total did not add up to 54,848 because 44 were out-of-state.

Table 19
Intake Cases - Offense by Offense Type
FY 1998 - FY 2000

Offenses	FY 1998	Percent	FY 1999	Percent	FY 2000	Percent	Percent Change '98 to '00
Person - to Person Offenses							
aggravated assault	468	0.8	355	0.6	764	1.4	115.2
child abuse	88	0.2	73	0.1	72	0.1	-1.4
kidnapping	8	0.0	7	0.0	1	0.0	-85.7
manslaughter	2	0.0	6	0.0	7	0.0	16.7
murder	53	0.1	60	0.1	28	0.1	-53.3
robbery	702	1.3	649	1.2	807	1.5	24.3
sex offense	617	1.1	595	1.1	441	0.8	-25.9
simple assault	10899	19.6	11399	20.7	10439	19.0	-8.4
Total Person-to-Person	12837	23.0	13144	23.8	12559	22.9	-4.5
Property Offenses							
arson felony/misd	350	0.6	386	0.7	355	0.6	-8.0
auto theft/unauthorized use	2636	4.7	2060	3.7	2056	3.7	-0.2
burglary/breaking & entering	2703	4.8	2512	4.6	2582	4.7	2.8
carjacking	22	0.0	23	0.0	29	0.1	26.1
malicious destruction	3464	6.2	3358	6.1	3723	6.8	0.0
tampering	83	0.1	99	0.2	113	0.2	14.1
theft/shoplifting	9089	16.3	8716	15.8	9246	16.9	6.1
trespassing	1350	2.4	1522	2.8	1298	2.4	-14.7
Total Property	19697	35.3	18676	33.9	19402	35.4	3.9
Alcohol & Drug Related Offenses							
alcohol violations	3932	7.1	3626	6.6	3002	5.5	-17.2
glue sniffing & other inhalants	30	0.1	30	0.1	9	0.0	-70.0
narcotics distribution	2689	4.8	2884	5.2	6289	11.5	118.1
narcotics possession	4902	8.8	4814	8.7	2055	3.7	-57.3
Total - Alcohol & Drug related	11553	20.7	11354	20.6	11355	20.7	0.0
CINS Offenses							
runaway	893	1.6	783	1.4	600	1.1	-23.4
truancy	346	0.6	322	0.6	325	0.6	0.9
ungovernable	799	1.4	646	1.2	664	1.2	2.8
Total - CINS	2038	3.7	1751	3.2	1589	2.9	-9.3
Uncategorized - Offenses							
carry or conceal a deadly weapon	1169	2.1	1190	2.2	977	1.8	-17.9
conspiracy	140	0.3	130	0.2	41	0.1	-68.5
disorderly conduct	1741	3.1	1837	3.3	1610	2.9	-12.4
failure to obey law	193	0.3	193	0.3	94	0.2	-51.3
false report	247	0.4	253	0.5	131	0.2	-48.2
hand gun violations	266	0.5	230	0.4	167	0.3	-27.4
harrassment	223	0.4	191	0.3	207	0.4	8.4
loitering	361	0.6	436	0.8	293	0.5	-32.8
motor vehicle /traffic violations	1011	1.8	1110	2.0	1502	2.7	35.3
pager at school	95	0.2	67	0.1	14	0.0	-79.1
reckless endangerment	108	0.2	149	0.3	125	0.2	-16.1
rogue & vagabond	75	0.1	64	0.1	14	0.0	-78.1
telephone misuse	194	0.3	176	0.3	193	0.4	9.7
tobacco violations	2626	4.7	2968	5.4	2089	3.8	-29.6
unspecified felony	182	0.3	198	0.4	149	0.3	-24.7
other/misdemeanors	976	1.8	1033	1.9	2337	4.3	126.2
Total - Uncategorized	9607	17.2	10225	18.5	9943	18.1	-2.8
State Total	55732	100.0	55150	100.0	54848	100.0	-0.5

Table 20
Intake Cases by Alleged Offenses & County of Jurisdiction
FY 2000

Area	Aggravated Assault	Simple Assault	Robbery	Sex Offense	Murder	Manslaughter	Kidnapping	Child Abuse	Arson Felony/ Misdemeanors	Auto Theft/ Unauthorized Use	Breaking & Entering	Carjacking	Malicious Destruction	Theft / Shoplifting	Tampering	Trespassing
1. Baltimore City	433	2095	236	93	12	3	0	3	74	805	395	20	390	725	5	309
Area 1 Total	433	2095	236	93	12	3	0	3	74	805	395	20	390	725	5	309
2. Baltimore	108	1915	158	60	5	0	1	21	79	236	503	3	844	1981	26	228
Carroll	5	246	3	15	0	0	0	3	21	11	69	0	141	225	4	44
Harford	4	318	11	8	0	0	0	1	3	59	87	0	121	330	10	29
Howard	8	221	12	16	1	0	0	4	16	35	95	0	121	263	7	50
Area 2 Total	125	2700	184	99	6	0	1	29	119	341	754	3	1227	2799	47	351
3. Allegany	2	201	3	2	0	0	0	1	13	12	27	0	69	202	5	15
Frederick	12	349	14	11	0	0	0	0	18	38	84	0	157	397	10	36
Garrett	7	26	0	7	0	0	0	0	0	6	8	0	16	25	2	6
Montgomery	37	661	92	33	4	1	0	11	35	232	210	1	293	827	4	82
Washington	5	234	4	9	0	0	0	0	16	18	67	0	84	260	2	19
Area 3 Total	63	1471	113	62	4	1	0	12	82	306	396	1	619	1711	23	158
4. Caroline	6	130	1	6	0	0	0	0	4	6	26	0	72	104	0	13
Cecil	2	187	3	6	0	1	0	3	4	19	52	0	90	152	1	26
Dorchester	3	130	3	5	0	0	0	0	5	14	43	0	76	96	0	6
Kent	0	70	1	1	0	0	0	0	0	3	10	0	11	28	0	12
Queen Anne's	2	70	3	1	0	0	0	0	1	5	25	0	34	41	0	5
Somerset	1	76	2	3	0	0	0	0	1	3	22	0	28	26	0	2
Talbot	1	69	1	4	0	0	0	0	1	11	17	0	32	54	1	18
Wicomico	7	515	7	14	0	0	0	4	16	63	84	0	106	359	4	44
Worcester	8	89	5	10	0	0	0	0	3	24	35	0	45	161	3	17
Area 4 Total	30	1336	26	50	0	1	0	7	35	148	314	0	494	1021	9	143
5. Anne Arundel	21	1226	60	30	0	2	0	4	2	92	264	1	432	1053	21	120
Calvert	7	121	1	5	0	0	0	1	4	12	51	0	58	63	0	6
Charles	18	378	10	17	0	0	0	6	10	33	80	0	113	483	0	22
Prince George's	58	904	171	71	6	0	0	9	18	300	271	4	280	1246	7	178
St.Mary's	8	206	3	10	0	0	0	1	10	19	55	0	106	136	1	11
Area 5 Total	112	2835	245	133	6	2	0	21	44	456	721	5	989	2981	29	337
Out-o-fState	1	2	3	4	0	0	0	0	0	0	2	0	4	9	0	0
State Total	764	10439	807	441	28	7	1	72	354	2056	2582	29	3723	9246	113	1298

Table 20
Intake Cases by Alleged Offenses & County of Jurisdiction
FY 2000

Area	Alcohol Violation	Narcotics Possession	Narcotics Distribution	Glue Sniffing	Runaway	Truant	Ungovernable	Carrying / Concealing a Weapon	Disorderly Conduct	Motor Vehicle/Traffic Violation	Loitering	Harassment	Pager at School	Tobacco Violation	Handgun Violation
1. Baltimore City	84	335	2676	0	10	101	146	257	511	110	278	21	0	1	83
Area 1 Total	84	335	2676	0	10	101	146	257	511	110	278	21	0	1	83
Baltimore	204	281	713	0	3	0	9	96	113	150	9	41	2	188	24
Carroll	171	92	136	0	51	0	0	24	24	39	0	19	0	64	2
Harford	96	118	214	0	3	3	1	29	40	57	0	4	0	413	7
Howard	266	55	146	0	16	1	1	32	31	71	0	7	0	71	2
Area 2 Total	737	546	1209	0	73	4	11	181	208	317	9	71	2	736	35
3. Allegany	240	18	76	2	45	0	38	6	23	50	0	9	0	60	1
Frederick	149	92	184	1	70	54	27	32	56	114	0	5	2	214	2
Garrett	41	12	21	0	2	17	20	1	2	9	0	6	0	2	0
Montgomery	328	181	274	0	3	0	24	108	43	249	0	5	0	91	10
Washington	148	54	98	0	3	13	124	17	9	43	0	22	0	29	0
Area 3 Total	906	357	653	3	123	84	233	164	133	465	0	47	2	396	13
4. Caroline	62	18	36	0	33	3	1	7	48	5	0	4	0	13	0
Cecil	134	22	72	0	25	3	1	15	40	19	0	3	0	39	1
Dorchester	29	23	43	0	11	0	0	10	85	34	0	3	0	19	2
Kent	17	10	14	0	10	0	0	3	12	4	0	0	0	26	0
Queen Anne's	30	10	58	0	33	3	3	3	13	4	0	1	0	28	0
Somerset	14	12	19	0	7	0	0	2	0	5	0	2	0	9	1
Talbot	99	20	21	0	14	1	1	6	19	12	0	0	1	35	1
Wicomico	126	84	91	0	66	1	0	18	52	67	0	15	1	164	2
Worcester	213	104	94	0	44	1	3	14	49	26	0	0	0	141	1
Area 4 Total	724	303	448	0	243	12	9	78	318	176	0	28	2	474	8
5. Anne Arundel	219	210	507	0	3	75	1	84	120	146	0	18	2	259	5
Calvert	31	21	54	1	89	1	1	4	12	49	0	2	0	11	2
Charles	87	83	120	0	4	0	2	40	53	91	0	2	1	70	4
Prince George's	86	161	514	0	13	48	258	153	205	96	6	16	5	70	16
St.Mary's	128	39	101	0	41	0	2	15	50	52	0	2	0	72	1
Area 5 Total	551	514	1296	1	150	124	264	296	440	434	6	40	8	482	28
Out-of-State	0	0	7	0	1	0	1	1	0	0	0	0	0	0	0
State Tot:	3002	2055	6289	4	600	325	664	977	1610	1502	293	207	14	2089	167

Table 20
Intake Cases by Alleged Offenses & County of Jurisdiction
FY 2000

Area	Failure to Obey Law	False Report	Reckless Endangerment	Rogue & Vagabond	Telephone Misuse	Unspecified Felony	Misdemeanors	Juris. Total
1. Baltimore City	60	10	13	7	6	17	418	10742
Area 1 Total	60	10	13	7	6	17	418	10742
2. Baltimore	0	16	5	1	71	19	266	8356
Carroll	3	6	3	0	7	6	68	1560
Harford	1	11	2	0	6	4	90	2080
Howard	0	3	9	1	2	4	34	1601
Area 2 Total	4	36	19	2	86	33	458	13597
3. Allegany	2	4	2	0	9	5	45	1197
Frederick	0	2	10	0	3	6	179	2321
Garrett	1	1	3	0	0	1	21	263
Montgomery	6	23	18	3	8	20	314	4213
Washington	1	3	2	0	11	4	57	1355
Area 3 Total	10	33	35	3	31	36	616	9349
4. Caroline	2	1	1	0	3	2	45	646
Cecil	1	1	4	0	3	2	44	973
Dorchester	2	0	1	0	9	1	22	675
Kent	0	0	2	0	0	3	41	278
Queen Anne's	0	0	2	0	3	0	24	401
Somerset	0	3	2	0	1	0	13	254
Talbot	0	0	1	0	2	0	25	466
Wicomico	0	10	12	1	7	14	99	2048
Worcester	4	4	6	0	2	0	66	1172
Area 4 Total	9	19	31	1	30	22	379	6913
5. Anne Arundel	0	2	10	0	21	15	175	5200
Calvert	0	1	3	0	8	1	25	645
Charles	7	10	5	0	5	8	67	1829
Prince George's	4	10	6	1	6	14	207	5418
St.Mary's	0	10	3	0	0	1	28	1111
Area 5 Total	11	33	27	1	40	39	502	14203
Out-of-State	0	0	0	0	0	2	7	44
State To	94	131	125	14	193	149	2380	54848

Table 21
Intake Cases by Alleged Offenses & County of Jurisdiction for African-American Youth
FY 2000

Area	Aggravated Assault	Simple Assault	Robbery	Sex Offense	Murder	Manslaughter	Kidnapping	Child Abuse	Arson Felony/ Misdemeanors	Auto Theft/ Unauthorized Use	Breaking & Entering	Carjacking	Malicious Destruction	Theft / Shoplifting	Tampering	Trespassing
1. Baltimore City	381	1793	225	81	11	2	0	2	54	731	333	20	320	605	5	270
Area 1 Total	381	1793	225	81	11	2	0	2	54	731	333	20	320	605	5	270
2. Baltimore	61	958	126	38	5	0	0	8	23	155	233	3	228	1229	5	111
Carroll	1	24	2	4	0	0	0	0	1	0	0	0	6	15	0	4
Harford	2	101	11	1	0	0	0	1	0	26	17	0	20	88	3	5
Howard	4	94	11	7	0	0	0	0	0	21	26	0	19	128	0	14
Area 2 Total	68	1177	150	50	5	0	0	9	24	202	276	3	273	1460	8	134
3. Allegany	0	25	3	0	0	0	0	1	1	4	7	0	6	15	0	0
Frederick	1	141	9	2	0	0	0	0	1	10	16	0	15	88	4	12
Garrett	0	1	0	1	0	0	0	0	0	0	1	0	1	0	0	0
Montgomery	24	366	72	16	1	0	0	3	2	123	95	1	112	453	2	38
Washington	1	33	0	5	0	0	0	0	1	5	10	0	8	48	1	3
Area 3 Total	26	566	84	24	1	0	0	4	5	142	129	1	142	604	7	53
4. Caroline	4	57	1	4	0	0	0	0	1	3	7	0	15	43	0	5
Cecil	0	13	0	0	0	0	0	0	0	2	6	0	4	15	0	0
Dorchester	0	88	3	3	0	0	0	0	4	9	27	0	43	64	0	4
Kent	0	38	1	0	0	0	0	0	0	2	1	0	9	16	0	11
Queen Anne's	0	16	2	0	0	0	0	0	0	2	0	0	6	14	0	2
Somerset	1	45	2	2	0	0	0	1	3	15	0	17	18	0	1	1
Talbot	0	37	1	2	0	0	0	0	0	7	8	0	9	18	0	0
Wicomico	4	348	4	6	0	0	0	0	9	32	36	0	51	201	1	28
Worcester	1	39	0	3	0	0	0	0	1	5	8	0	7	34	0	2
Area 4 Total	10	681	14	20	0	0	0	0	16	65	108	0	161	423	1	53
5. Anne Arundel	12	518	38	14	0	1	0	2	1	31	91	1	83	393	1	31
Calvert	4	25	0	1	0	0	0	0	2	6	4	0	11	9	0	3
Charles	14	203	10	11	0	0	0	5	8	17	29	0	38	218	0	10
Prince George's	54	780	160	60	6	0	0	7	14	242	210	3	207	1018	6	141
St.Mary's	3	96	3	3	0	0	0	0	2	9	11	0	21	39	0	2
Area 5 Total	87	1622	211	89	6	1	0	14	27	305	345	4	360	1677	7	187
Out-o-fState	0	1	2	1	0	0	0	0	0	0	2	0	1	9	0	0
State Total	572	5840	684	264	23	3	0	29	126	1445	1191	28	1256	4769	28	697

Table 21
Intake Cases by Alleged Offenses & County of Jurisdiction for African-American Youth
FY 2000

Area	Alcohol Violation	Narcotics Possession	Narcotics Distribution	Glue Sniffing	Runaway	Truant	Ungovernable	Carrying / Concealing a Weapon	Disorderly Conduct	Motor Vehicle/Traffic Violation	Loitering	Harassment	Pager at School	Tobacco Violation	Handgun Violation
1. Baltimore City	59	287	2477	0	8	74	140	232	454	95	244	13	0	0	78
Area 1 Total	59	287	2477	0	8	74	140	232	454	95	244	13	0	0	78
2. Baltimore	23	94	278	0	1	0	3	46	66	51	4	9	0	23	18
Carroll	3	3	10	0	7	1	0	4	3	1	0	0	0	3	0
Harford	7	22	59	0	1	0	0	11	14	19	0	0	0	42	4
Howard	17	10	40	0	2	0	0	18	14	18	0	1	0	7	2
Area 2 Total	50	129	387	0	11	1	3	79	97	89	4	10	0	75	24
3. Allegany	5	0	5	0	3	1	1	2	2	0	0	0	0	3	0
Frederick	14	13	28	0	20	16	7	9	22	16	0	2	0	19	0
Garrett	0	0	0	0	0	0	0	0	0	0	0	0	0	0	0
Montgomery	65	74	123	0	0	3	7	36	34	58	0	1	0	31	5
Washington	10	14	27	0	0	0	17	2	4	11	0	2	0	2	0
Area 3 Total	94	101	183	0	23	20	32	49	62	85	0	5	0	55	5
4. Caroline	3	3	12	0	8	0	1	1	32	0	0	2	0	3	0
Cecil	2	3	8	0	0	0	0	4	3	2	0	1	0	0	0
Dorchester	6	1	17	0	3	0	0	4	61	11	0	3	0	6	2
Kent	8	4	3	0	4	0	0	2	6	0	0	0	0	6	0
Queen Anne's	2	4	10	0	3	1	2	0	3	1	0	0	0	3	0
Somerset	4	3	10	0	5	0	0	1	0	0	0	0	0	0	1
Talbot	7	10	5	0	6	1	0	3	9	2	0	0	0	5	1
Wicomico	18	40	43	0	29	0	0	13	31	29	0	5	0	49	1
Worcester	20	9	19	0	11	0	2	3	8	1	0	0	0	12	0
Area 4 Total	70	77	127	0	69	2	5	31	153	46	0	11	0	84	5
5. Anne Arundel	16	49	113	0	0	20	1	29	54	28	0	2	0	15	1
Calvert	1	5	7	0	7	0	0	0	5	8	0	0	0	1	1
Charles	27	15	43	0	0	0	1	13	33	31	0	0	0	11	4
Prince George's	56	128	387	0	11	33	206	120	181	75	5	10	0	47	13
St.Mary's	9	6	32	0	9	0	2	4	24	5	0	0	0	8	0
Area 5 Total	109	203	582	0	27	53	210	166	297	147	5	12	0	82	19
Out-of-State	0	0	4	0	1	0	0	0	0	0	0	0	0	0	0
State Total	382	797	3760	0	139	150	390	557	1063	462	253	51	0	296	131

Table 21
Intake Cases by Alleged Offenses & County of Jurisdiction for African-American Youth
FY 2000

Area	Failure to Obey Law	False Report	Reckless Endangerment	Rogue & Vagabond	Telephone Misuse	Unspecified Felony	Misdemeanors	Juris. Total
1. Baltimore City	52	10	8	4	4	16	369	9457
Area 1 Total	52	10	8	4	4	16	369	9457
2. Baltimore	0	11	0	0	20	6	116	3953
Carroll	0	1	0	0	0	4	1	98
Harford	0	6	0	0	2	3	32	495
Howard	0	2	2	1	0	1	14	475
Area 2 Total	0	20	2	1	22	14	163	5021
3. Allegany	0	0	0	0	1	2	1	89
Frederick	0	0	4	0	1	4	33	507
Garrett	0	0	0	0	0	0	0	4
Montgomery	5	15	8	0	1	9	132	1912
Washington	0	2	0	0	0	0	14	223
Area 3 Total	5	17	12	0	3	15	180	2735
4. Caroline	2	0	0	0	3	0	15	225
Cecil	0	0	1	0	0	1	4	69
Dorchester	0	0	0	0	4	0	8	371
Kent	0	0	0	0	0	1	30	142
Queen Anne's	0	0	2	0	2	0	7	82
Somerset	0	3	2	0	1	0	8	143
Talbot	0	0	1	0	0	0	6	138
Wicomico	0	7	4	1	6	5	52	1054
Worcester	0	1	3	0	1	0	8	198
Area 4 Total	2	11	13	1	17	7	138	2422
5. Anne Arundel	0	0	2	0	2	4	70	1622
Calvert	0	0	1	0	2	1	6	109
Charles	5	8	2	0	2	4	33	796
Prince George's	4	8	5	1	5	14	171	4392
St.Mary's	0	0	0	0	0	0	8	296
Area 5 Total	9	16	8	1	11	23	288	7215
Out-of-State	0	0	0	0	0	0	3	24
State Total	68	74	43	7	57	75	1141	26874

Table 22
Intake Cases by Alleged Offenses & County of Jurisdiction for Caucasian Youth
FY 2000

Area	Aggravated Assault	Simple Assault	Robbery	Sex Offense	Murder	Manslaughter	Kidnapping	Child Abuse	Arson Felony/ Misdemeanors	Auto Theft/ Unauthorized Use	Breaking & Entering	Carjacking	Malicious Destruction	Theft / Shoplifting	Tampering	Trespassing
1. Baltimore City	41	269	6	10	1	1	0	1	13	65	57	0	66	113	0	37
Area 1 Total	41	269	6	10	1	1	0	1	13	65	57	0	66	113	0	37
2. Baltimore	46	937	31	22	0	0	1	13	33	79	263	0	596	706	21	116
Carroll	4	221	1	11	0	0	0	1	19	10	69	0	135	210	4	40
Harford	2	209	0	7	0	0	0	2	3	31	68	0	99	234	9	22
Howard	4	123	0	8	1	0	0	4	12	13	68	0	99	121	2	36
Area 2 Total	56	1490	32	48	1	0	1	20	67	133	468	0	929	1271	36	214
3. Allegany	2	176	0	2	0	0	0	0	12	8	20	0	63	186	5	15
Frederick	11	194	4	9	0	0	0	0	10	26	66	0	137	297	6	23
Garrett	7	25	0	6	0	0	0	0	0	6	7	0	15	25	2	6
Montgomery	9	229	10	12	0	0	0	7	11	55	94	0	126	242	0	33
Washington	3	192	4	4	0	0	0	0	14	10	52	0	73	201	1	16
Area 3 Total	32	816	18	33	0	0	0	7	47	105	239	0	414	951	14	93
4. Caroline	1	69	0	2	0	0	0	0	2	3	19	0	56	61	0	8
Cecil	2	171	3	5	0	1	0	3	2	17	45	0	86	134	1	26
Dorchester	3	38	0	2	0	0	0	0	0	5	15	0	33	32	0	2
Kent	0	32	0	1	0	0	0	0	0	1	9	0	0	11	0	1
Queen Anne's	2	54	1	1	0	0	0	0	0	3	25	0	28	27	0	3
Somerset	0	30	0	1	0	0	0	0	0	0	7	0	11	8	0	1
Talbot	1	32	0	2	0	0	0	0	0	4	9	0	23	34	1	18
Wicomico	2	158	1	8	0	0	0	3	1	30	47	0	52	154	3	15
Worcester	7	48	5	7	0	0	0	0	2	19	26	0	37	121	3	14
Area 4 Total	18	632	10	29	0	1	0	6	7	82	202	0	326	582	8	88
5. Anne Arundel	8	686	20	16	0	1	0	2	1	57	167	0	341	619	20	84
Calvert	3	94	1	4	0	0	0	1	1	6	47	0	47	54	0	3
Charles	4	165	0	6	0	0	0	1	2	12	49	0	74	256	0	12
Prince George's	3	96	7	8	0	0	0	2	3	35	40	1	57	164	1	28
St.Mary's	5	108	0	7	0	0	0	1	7	9	44	0	85	94	1	9
Area 5 Total	23	1149	28	41	0	1	0	7	14	119	347	1	604	1187	22	136
Out-o-fState	1	1	0	3	0	0	0	0	0	0	0	0	3	0	0	0
State Total	171	4357	94	161	2	3	1	41	148	504	1313	1	2339	4104	80	568

Table 22
Intake Cases by Alleged Offenses & County of Jurisdiction for Caucasian Youth
FY 2000

Area	Alcohol Violation	Narcotics Possession	Narcotics Distribution	Glue Sniffing	Runaway	Truant	Ungovernable	Carrying / Concealing a Weapon	Disorderly Conduct	Motor Vehicle/Traffic Violation	Loitering	Harassment	Pager at School	Tobacco Violation	Handgun Violation
1. Baltimore City	24	48	178	5	2	20	6	25	53	13	32	7	0	1	4
Area 1 Total	24	48	178	5	2	20	6	25	53	13	32	7	0	1	4
2. Baltimore	178	185	421	0	2	0	6	49	43	96	5	32	0	165	5
Carroll	167	88	124	0	44	37	21	19	21	38	0	19	0	61	2
Harford	89	94	151	0	2	2	1	16	26	38	0	4	0	364	3
Howard	245	45	95	0	13	0	1	10	17	48	0	6	0	64	0
Area 2 Total	679	412	791	0	61	39	29	94	107	220	5	61	0	654	10
3. Allegany	234	18	71	2	42	9	34	4	21	50	0	9	0	57	1
Frederick	133	75	150	1	47	37	19	23	33	93	0	3	0	194	2
Garrett	41	12	21	0	2	17	20	1	2	9	0	6	0	2	0
Montgomery	220	84	129	0	3	0	7	54	9	120	0	4	0	53	4
Washington	130	38	68	0	3	10	99	15	5	31	0	19	0	27	0
Area 3 Total	758	227	439	3	97	73	179	97	70	303	0	41	0	333	7
4. Caroline	57	15	24	0	25	2	0	6	16	5	0	2	0	10	0
Cecil	132	19	64	0	23	3	1	11	35	17	0	2	0	39	1
Dorchester	23	22	24	0	8	0	0	6	24	22	0	0	0	13	0
Kent	9	6	11	0	6	0	0	1	6	4	0	0	0	19	0
Queen Anne's	28	6	47	0	30	2	1	3	10	3	0	1	0	25	0
Somerset	10	9	9	0	2	0	0	1	0	5	0	2	0	9	0
Talbot	92	10	16	0	8	0	1	3	10	10	0	0	0	30	0
Wicomico	103	42	48	0	37	1	0	4	18	38	0	8	0	113	1
Worcester	187	91	74	0	33	1	1	11	38	25	0	0	0	128	1
Area 4 Total	641	220	317	0	172	9	4	46	157	129	0	15	0	386	3
5. Anne Arundel	201	156	387	0	3	48	1	51	66	112	0	16	0	235	4
Calvert	30	16	47	1	76	1	1	4	7	41	0	2	0	10	1
Charles	58	68	75	0	4	0	1	26	19	57	0	2	0	58	0
Prince George's	26	30	103	0	1	13	44	22	18	18	1	4	0	17	2
St.Mary's	119	33	68	0	27	0	0	11	26	47	0	2	0	64	1
Area 5 Total	434	303	680	1	111	62	47	114	136	275	1	26	0	384	8
Out-of-State	0	0	2	0	0	0	1	1	0	0	0	0	0	0	0
State Tot	2536	1210	2407	9	443	203	266	377	523	940	38	150	0	1758	32

Table 22
Intake Cases by Alleged Offenses & County of Jurisdiction for Caucasian Youth
FY 2000

Area	Failure to Obey Law	False Report	Reckless Endangerment	Rogue & Vagabond	Telephone Misuse	Unspecified Felony	Misdemeanors	Juris. Total
1. Baltimore City	7	0	5	3	2	1	47	1163
Area 1 Total	7	0	5	3	2	1	47	1163
Baltimore	0	4	5	1	50	13	147	4272
Carroll	3	5	2	0	7	2	66	1453
Harford	1	5	2	0	4	1	57	1544
Howard	0	1	6	0	2	3	18	1065
Area 2 Total	4	15	15	1	63	19	288	8334
3. Allegany	2	4	2	0	8	3	44	1104
Frederick	0	2	4	0	2	2	140	1745
Garrett	1	1	3	0	0	1	21	259
Montgomery	1	7	9	3	7	11	144	1697
Washington	1	1	2	0	11	4	26	1077
Area 3 Total	5	15	20	3	28	21	375	5882
4. Caroline	0	1	1	0	0	2	22	409
Cecil	1	1	3	0	3	1	39	891
Dorchester	2	0	1	0	5	1	14	295
Kent	0	0	1	0	0	0	11	129
Queen Anne's	0	0	0	0	1	0	17	318
Somerset	0	0	0	0	0	0	4	109
Talbot	0	0	0	0	2	0	19	326
Wicomico	0	3	7	0	0	9	43	949
Worcester	4	3	3	0	1	0	56	946
Area 4 Total	7	8	16	0	12	13	225	4372
5. Anne Arundel	0	2	8	0	19	11	101	3445
Calvert	0	1	3	0	6	0	19	527
Charles	2	2	3	0	3	4	34	997
Prince George's	0	2	1	0	0	0	29	777
St.Mary's	0	10	3	0	0	1	21	803
Area 5 Total	2	17	18	0	28	16	204	6549
Out-of-State	0	0	0	0	0	2	4	18
State To	25	55	74	7	133	72	1143	26318

Table 23
Intake Cases by Alleged Offenses & County of Jurisdiction for All Other Youth
FY 2000

Area	Aggravated Assault	Simple Assault	Robbery	Sex Offense	Murder	Manslaughter	Kidnapping	Child Abuse	Arson Felony/ Misdemeanors	Auto Theft/ Unauthorized Use	Breaking & Entering	Carjacking	Malicious Destruction	Theft / Shoplifting	Tampering	Trespassing
1. Baltimore City	11	33	5	2	0	0	0	0	3	9	5	0	4	7	0	2
Area 1 Total	11	33	5	2	0	0	0	0	3	9	5	0	4	7	0	2
2. Baltimore	1	20	1	0	0	0	0	0	0	2	7	0	20	46	0	1
Carroll	0	1	0	0	0	0	0	0	0	1	0	0	0	0	0	0
Harford	0	8	0	0	0	0	0	0	0	2	2	0	2	8	3	0
Howard	0	4	1	1	0	0	0	0	0	1	1	0	3	14	0	2
Area 2 Total	1	33	2	1	0	0	0	0	0	6	10	0	25	68	3	3
3. Allegany	0	0	0	0	0	0	0	0	0	0	0	0	0	1	0	0
Frederick	0	14	1	0	0	0	0	0	0	2	2	0	5	12	0	1
Garrett	0	0	0	0	0	0	0	0	0	0	0	0	0	0	0	0
Montgomery	4	66	10	5	3	1	0	1	4	54	21	0	55	132	2	11
Washington	1	9	0	0	0	0	0	0	0	3	5	0	3	11	0	0
Area 3 Total	5	89	11	5	3	1	0	1	4	59	28	0	63	156	2	12
4. Caroline	1	4	0	0	0	0	0	0	0	0	0	0	1	0	0	0
Cecil	0	3	0	1	0	0	0	0	0	0	1	0	0	3	0	0
Dorchester	0	4	0	0	0	0	0	0	1	0	1	0	0	0	0	0
Kent	0	0	0	0	0	0	0	0	0	0	0	0	2	1	0	0
Queen Anne's	0	0	0	0	0	0	0	0	0	0	0	0	0	0	0	0
Somerset	0	1	0	0	0	0	0	0	0	0	0	0	0	0	0	0
Talbot	0	2	0	0	0	0	0	0	0	0	0	0	0	2	0	0
Wicomico	1	8	2	0	0	0	0	1	1	1	1	0	3	4	0	1
Worcester	0	1	0	0	0	0	0	0	0	0	1	0	1	6	0	1
Area 4 Total	2	23	2	1	0	0	0	1	2	1	4	0	7	16	0	2
5. Anne Arundel	1	22	2	0	0	0	0	0	0	4	6	0	8	41	0	5
Calvert	0	2	0	0	0	0	0	0	0	0	0	0	0	20	0	0
Charles	0	10	0	0	0	0	0	0	0	4	2	0	1	9	0	0
Prince George's	1	28	4	3	0	0	0	0	1	23	21	0	16	44	0	9
St.Mary's	0	2	0	0	0	0	0	0	0	1	0	0	0	3	0	0
Area 5 Total	2	64	6	3	0	0	0	0	1	32	29	0	25	117	0	14
Out-o-fState	0	0	1	0	0	0	0	0	0	0	0	0	0	0	0	0
State Total	21	242	26	12	3	1	0	2	10	107	76	0	124	364	5	33

Table 23
Intake Cases by Alleged Offenses & County of Jurisdiction for All Other Youth
FY 2000

Area	Alcohol Violation	Narcotics Possession	Narcotics Distribution	Glue Sniffing	Runaway	Truant	Ungovernable	Carrying / Concealing a Weapon	Disorderly Conduct	Motor Vehicle/Traffic Violation	Loitering	Harassment	Pager at School	Tobacco Violation	Handgun Violation
1. Baltimore City	1	0	21	0	0	7	0	0	4	2	2	1	0	0	1
Area 1 Total	1	0	21	0	0	7	0	0	4	2	2	1	0	0	1
Baltimore	3	2	14	0	0	0	0	1	4	2	0	0	0	0	1
Carroll	1	1	2	0	0	0	0	1	0	1	0	0	0	0	0
Harford	0	2	4	0	0	1	0	2	0	0	0	0	0	7	0
Howard	4	0	11	0	1	1	0	4	0	5	0	0	0	0	0
Area 2 Total	8	5	31	0	1	2	0	8	4	8	0	0	0	7	1
3. Allegany	1	0	0	0	0	0	2	0	0	0	0	0	0	0	0
Frederick	2	4	6	0	3	1	1	0	1	5	0	0	0	1	0
Garrett	0	0	0	0	0	0	0	0	0	0	0	0	0	0	0
Montgomery	43	23	22	0	0	0	10	18	0	71	0	0	0	7	1
Washington	8	2	3	0	0	0	8	0	0	1	0	1	0	0	0
Area 3 Total	54	29	31	0	3	1	21	18	1	77	0	1	0	8	1
4. Caroline	2	0	0	0	0	1	0	0	0	0	0	0	0	0	0
Cecil	0	0	0	0	2	0	0	0	2	0	0	0	0	0	0
Dorchester	0	0	2	0	0	0	0	0	0	1	0	0	0	0	0
Kent	0	0	0	0	0	0	0	0	0	0	0	0	0	1	0
Queen Anne's	0	0	1	0	0	0	0	0	0	0	0	0	0	0	0
Somerset	0	0	0	0	0	0	0	0	0	0	0	0	0	0	0
Talbot	0	0	0	0	0	0	0	0	0	0	0	0	0	0	0
Wicomico	5	2	0	0	0	0	0	1	3	0	0	2	0	2	0
Worcester	6	4	1	0	0	0	0	0	3	0	0	0	0	1	0
Area 4 Total	13	6	4	0	2	1	0	1	8	1	0	2	0	4	0
5. Anne Arundel	2	5	7	0	0	7	0	4	0	6	0	0	0	9	0
Calvert	2	0	0	0	6	0	0	0	0	0	0	0	0	0	0
Charles	0	0	2	0	0	0	0	1	1	3	0	0	0	1	0
Prince George's	4	3	24	0	1	2	8	11	6	3	0	2	0	6	1
St.Mary's	0	0	1	0	5	0	0	0	0	0	0	0	0	0	0
Area 5 Total	8	8	34	0	12	9	8	16	7	12	0	2	0	16	1
Out-of-State	0	0	1	0	0	0	0	0	0	0	0	0	0	0	0
State Total	84	48	122	0	18	20	29	43	24	100	2	6	0	35	4

Table 23
Intake Cases by Alleged Offenses & County of Jurisdiction for All Other Youth
FY 2000

Area	Failure to Obey Law	False Report	Reckless Endangerment	Rogue & Vagabond	Telephone Misuse	Unspecified Felony	Misdemeanors	Juris. Total
1. Baltimore City	1	0	0	0	0	0	2	123
Area 1 Total	1	0	0	0	0	0	2	123
2. Baltimore	0	1	0	0	1	0	3	131
Carroll	0	0	1	0	0	0	0	9
Harford	0	0	0	0	0	0	1	41
Howard	0	0	1	0	0	0	6	61
Area 2 Total	0	1	2	0	1	0	10	242
3. Allegany	0	0	0	0	0	0	0	4
Frederick	0	0	2	0	0	0	6	69
Garrett	0	0	0	0	0	0	0	0
Montgomery	0	1	1	0	0	0	38	604
Washington	0	0	0	0	0	0	0	55
Area 3 Total	0	1	3	0	0	0	44	732
4. Caroline	0	0	0	0	0	0	3	12
Cecil	0	0	0	0	0	0	0	13
Dorchester	0	0	0	0	0	0	0	9
Kent	0	0	1	0	0	2	0	7
Queen Anne's	0	0	0	0	0	0	0	1
Somerset	0	0	0	0	0	0	1	2
Talbot	0	0	0	0	0	0	0	2
Wicomico	0	0	1	0	1	0	4	45
Worcester	0	0	0	0	0	0	2	28
Area 4 Total	0	0	2	0	1	2	10	119
5. Anne Arundel	0	0	0	0	0	0	4	133
Calvert	0	0	0	0	0	0	0	8
Charles	0	0	0	0	0	0	0	36
Prince George's	0	0	0	0	1	0	7	249
St.Mary's	0	0	0	0	0	0	0	12
Area 5 Total	0	0	0	0	1	0	11	438
Out-of-State	0	0	0	0	0	0	4	2
State To	1	2	7	0	3	2	81	1656

Table 24
Intake Cases by Alleged Offenses & County of Jurisdiction for Males
FY 2000

Area	Aggravated Assault	Simple Assault	Robbery	Sex Offense	Murder	Manslaughter	Kidnapping	Child Abuse	Arson Felony/ Misdemeanors	Auto Theft/ Unauthorized	Breaking & Entering	Carjacking	Malicious Destruction	Theft / Shoplifting	Tampering	Trespassing
1. Baltimore City	74	476	47	19	2	2	0	0	14	277	134	7	130	155	0	108
Area 1 Total	74	476	47	19	2	2	0	0	14	277	134	7	130	155	0	108
Baltimore	8	430	57	6	0	0	0	6	13	103	188	0	229	394	6	87
Carroll	0	74	0	2	0	0	0	1	6	2	33	0	56	60	0	19
Harford	0	82	4	1	0	0	0	0	0	14	36	0	49	64	5	9
Howard	1	61	1	6	0	0	0	1	7	21	24	0	37	49	1	19
Area 2 Total	9	647	62	15	0	0	0	8	26	140	281	0	371	567	12	134
3. Allegany	0	53	0	0	0	0	0	0	11	4	4	0	12	45	0	1
Frederick	0	84	7	4	0	0	0	0	8	18	31	0	69	162	4	17
Garrett	0	10	0	2	0	0	0	0	0	0	2	0	10	11	0	1
Montgomery	2	184	18	11	3	0	0	6	8	130	62	0	97	261	1	36
Washington	0	35	0	1	0	0	0	0	11	5	9	0	33	53	2	7
Area 3 Total	2	366	25	18	3	0	0	6	38	157	108	0	221	532	7	62
4. Caroline	3	38	0	3	0	0	0	0	0	2	15	0	22	35	0	7
Cecil	0	30	0	0	0	0	0	0	0	12	14	0	20	40	1	10
Dorchester	0	25	3	2	0	0	0	0	0	4	10	0	31	32	0	0
Kent	0	20	0	0	0	0	0	0	0	2	4	0	4	13	0	1
Queen Anne's	0	13	3	0	0	0	0	0	0	0	3	0	12	19	0	2
Somerset	0	11	0	0	0	0	0	0	0	2	3	0	10	6	0	1
Talbot	0	12	1	0	0	0	0	0	0	2	3	0	12	15	1	5
Wicomico	0	85	3	5	0	0	0	1	2	25	27	0	47	81	1	25
Worcester	0	19	0	3	0	0	0	0	3	4	16	0	21	65	0	1
Area 4 Total	3	253	10	13	0	0	0	1	5	53	95	0	179	306	3	52
2. Anne Arundel	1	233	14	4	0	0	0	1	0	28	57	0	95	230	5	31
5. Calvert	0	36	0	2	0	0	0	0	0	3	11	0	20	18	0	3
Charles	1	92	6	4	0	0	0	4	4	15	32	0	46	114	0	5
Prince George's	4	203	64	10	0	0	0	4	3	110	73	2	72	296	1	81
St.Mary's	0	51	0	2	0	0	0	0	6	4	13	0	33	39	1	5
Area 5 Total	6	615	84	22	0	0	0	9	13	160	186	2	266	697	7	125
Out-o-fState	0	0	0	0	0	0	0	0	0	0	0	0	0	0	0	0
State Total	94	2357	228	87	5	2	0	24	96	787	804	9	1167	2257	29	481

Table 24
Intake Cases by Alleged Offenses & County of Jurisdiction for Males
FY 2000

Area	Alcohol Violation	Narcotics Possession	Narcotics Distribution	Glue Sniffing	Runaway	Truant	Ungovernable	Carrying / Concealing a Weapon	Disorderly Conduct	Motor Vehicle/Traffic Violation	Loitering	Harassment	Pager at School	Tobacco Violation	Handgun Violation
1. Baltimore City	70	300	2504	3	4	60	61	171	342	104	259	14	0	0	77
Area 1 Total	70	300	2504	3	4	60	61	171	342	104	259	14	0	0	77
2. Baltimore	139	222	581	0	2	0	1	77	78	129	9	19	2	152	22
Carroll	119	72	119	0	23	25	10	21	20	29	0	11	0	44	2
Harford	70	103	191	0	0	2	1	26	31	47	0	2	0	280	7
Howard	164	45	117	0	7	1	0	31	23	57	0	2	0	48	2
Area 2 Total	492	442	1008	0	32	28	12	155	152	262	9	34	2	524	33
3. Allegany	137	12	58	2	18	6	12	4	11	37	0	8	0	36	1
Frederick	112	75	153	1	25	34	7	32	40	86	0	3	0	142	2
Garrett	26	11	17	0	0	9	10	1	2	8	0	4	0	2	0
Montgomery	229	153	232	0	1	0	16	100	33	217	0	4	0	71	9
Washington	99	45	84	0	1	9	69	14	8	32	0	10	0	24	0
Area 3 Total	603	296	544	3	45	58	114	151	94	380	0	29	0	275	12
4. Caroline	40	17	31	0	16	2	0	7	28	3	0	1	0	11	0
Cecil	92	17	54	0	4	3	1	13	33	14	0	2	0	25	1
Dorchester	21	18	37	0	1	0	0	8	59	30	0	1	0	15	2
Kent	11	7	11	0	2	0	0	2	6	4	0	0	0	15	0
Queen Anne's	25	10	44	0	17	3	0	3	12	3	0	1	0	20	0
Somerset	8	11	17	0	3	0	0	2	0	4	0	1	0	9	1
Talbot	67	9	15	0	7	0	0	4	13	8	0	0	1	27	1
Wicomico	85	62	78	0	19	0	0	10	35	46	0	12	1	116	2
Worcester	151	91	82	0	14	0	1	13	39	21	0	0	0	96	1
Area 4 Total	500	242	369	0	83	8	2	62	225	133	0	18	2	334	8
5. Anne Arundel	147	176	403	0	0	36	1	77	91	113	0	11	1	188	5
Calvert	23	20	43	0	34	1	0	4	12	39	0	1	0	8	2
Charles	67	72	100	0	2	0	2	36	46	72	0	2	1	50	4
St.Mary's	77	30	87	0	7	0	2	13	40	39	0	2	0	52	1
Prince George's	66	146	445	0	3	35	112	122	160	68	6	8	5	60	14
Area 5 Total	380	444	1078	0	46	72	117	252	349	331	6	24	7	358	26
Out-of-State	0	0	7	0	1	0	0	1	0	0	0	0	0	0	0
State Total	2045	1724	5510	6	211	226	306	792	1162	1210	274	119	11	1491	156

Table 24
Intake Cases by Alleged Offenses & County of Jurisdiction for Males
FY 2000

Area	Failure to Obey Law	False Report	Reckless Endangerment	Rogue & Vagabond	Telephone Misuse	Unspecified Felony	Misdemeanors	Juris. Total
1. Baltimore City	55	8	13	7	2	17	355	8752
Area 1 Total	55	8	13	7	2	17	355	8752
2. Baltimore	0	9	5	1	40	18	230	6155
Carroll	2	5	3	0	5	6	48	1152
Harford	1	6	1	0	5	3	72	1573
Howard	0	2	9	1	2	4	36	1169
Area 2 Total	3	22	18	2	52	31	386	10049
3. Allegany	2	3	1	0	9	3	32	788
Frederick	0	2	10	0	0	6	152	1740
Garrett	1	1	3	0	0	1	19	210
Montgomery	6	19	16	3	2	16	264	3367
Washington	1	1	2	0	6	4	41	967
Area 3 Total	10	26	32	3	17	30	508	7072
4. Caroline	1	1	1	0	1	2	30	487
Cecil	1	0	4	0	0	2	33	698
Dorchester	2	0	1	0	8	1	18	495
Kent	0	0	2	0	0	2	25	187
Queen Anne's	0	0	2	0	3	0	17	327
Somerset	0	1	1	0	0	0	8	193
Talbot	0	0	0	0	2	0	19	340
Wicomico	0	6	8	1	2	12	82	1414
Worcester	4	3	4	0	2	0	54	874
Area 4 Total	8	11	23	1	18	19	286	5015
5. Anne Arundel	0	2	9	0	9	11	139 #	3835
Calvert	0	0	2	0	7	1	19	476
Charles	7	9	5	0	1	6	52	1313
Prince George's	4	9	5	1	4	9	171	4199
St.Mary's	0	2	3	0	0	1	24	798
Area 5 Total	11	22	24	1	21	28	405	10621
Out-of-State	0	0	0	0	0	2	6	34
State Total	87	89	110	14	110	127	1946	41543

Table 25
Intake Cases by Alleged Offenses & County of Jurisdiction for Females
FY 2000

Area	Aggravated Assault	Simple Assault	Robbery	Sex Offense	Murder	Manslaughter	Kidnapping	Child Abuse	Arson Felony/ Misdemeanors	Auto Theft/ Unauthorized Use	Breaking & Entering	Carjacking	Malicious Destruction	Theft / Shoplifting	Tampering	Trespassing
1. Baltimore City	113	727	15	5	1	0	0	1	16	65	55	1	64	140	0	64
Area 1 Total	113	727	15	5	1	0	0	1	16	65	55	1	64	140	0	64
2. Baltimore	27	608	7	4	2	0	0	2	8	47	65	2	119	811	0	24
Carroll	2	67	0	2	0	0	0	0	5	3	6	0	21	80	0	12
Harford	0	102	1	0	0	0	0	1	0	13	2	0	11	122	0	4
Howard	2	55	0	0	0	0	0	0	2	8	29	0	13	106	2	10
Area 2 Total	31	832	8	6	2	0	0	3	15	71	102	2	164	1119	2	50
3. Allegany	0	58	0	1	0	0	0	0	0	6	2	0	20	69	0	0
Frederick	3	89	0	2	0	0	0	0	0	13	16	0	25	104	3	6
Garrett	0	2	0	0	0	0	0	0	0	2	1	0	1	2	0	0
Montgomery	6	173	17	0	0	0	0	0	5	25	30	1	38	220	0	14
Washington	0	79	0	0	0	0	0	0	2	2	6	0	19	89	0	3
Area 3 Total	9	401	17	3	0	0	0	0	7	48	55	1	103	484	3	23
4. Caroline	2	26	0	1	0	0	0	0	0	1	5	0	14	20	0	3
Cecil	1	55	0	0	0	1	0	1	1	4	6	0	16	53	0	7
Dorchester	0	57	0	1	0	0	0	0	2	3	6	0	15	23	0	1
Kent	0	20	0	0	0	0	0	0	0	1	0	0	3	7	0	5
Queen Anne's	0	8	0	0	0	0	0	0	0	1	4	0	3	4	0	0
Somerset	1	23	0	0	0	0	0	0	0	0	1	0	3	8	0	1
Talbot	0	15	0	0	0	0	0	0	0	4	2	0	1	14	0	6
Wicomico	1	186	2	0	0	0	0	2	2	19	15	0	14	134	0	6
Worcester	2	35	1	0	0	0	0	0	0	13	4	0	4	36	0	7
Area 4 Total	7	425	3	2	0	1	0	3	5	46	43	0	73	299	0	36
5. Anne Arundel	4	409	1	0	0	0	0	1	1	27	45	1	48	349	4	22
Calvert	2	27	0	0	0	0	0	0	1	3	13	0	12	11	0	0
Charles	6	111	0	0	0	0	0	0	1	16	9	0	18	226	0	4
Prince George	16	258	10	7	0	0	0	3	5	50	34	0	53	318	3	21
St.Mary's	2	66	0	2	0	0	0	0	2	8	13	0	15	38	0	1
Area 5 Total	30	871	11	9	0	0	0	4	10	104	114	1	146	942	7	48
Out-o-fState	1	1	0	0	0	0	0	0	0	0	0	0	1	5	0	0
State Total	191	3257	54	25	3	1	0	11	53	334	369	5	551	2989	12	221

**Table 25
Intake Cases by Alleged Offenses & County of Jurisdiction for Females
FY 2000**

Area	Alcohol Violation	Narcotics Possession	Narcotics Distribution	Glue Sniffing	Runaway	Truant	Ungovernable	Carrying / Concealing a Weapon	Disorderly Conduct	Motor Vehicle/Traffic Violation	Loitering	Harassment	Pager at School	Tobacco Violation	Handgun Violation
1. Baltimore City	14	35	808	5	4	0	32	50	166	6	19	7	0	1	6
Area 1 Total	14	35	808	5	4	0	32	50	166	6	19	7	0	1	6
2. Baltimore	65	59	132	0	1	0	8	19	35	21	0	22	0	36	2
Carroll	52	20	17	0	28	13	11	3	4	10	0	8	0	20	0
Harford	26	15	23	0	3	1	0	3	9	10	0	2	0	133	0
Howard	102	10	29	0	9	0	1	1	8	14	0	5	0	23	0
Area 2 Total	245	104	201	0	41	14	20	26	56	55	0	37	0	212	2
3. Allegany	103	6	18	0	27	4	26	2	12	13	0	1	0	24	0
Frederick	37	17	31	0	45	20	20	0	16	28	0	2	2	72	0
Garrett	15	1	4	0	2	8	10	0	0	1	0	2	0	0	0
Montgomery	99	28	42	0	2	0	8	8	10	32	0	1	0	20	1
Washington	49	9	14	0	2	4	55	3	1	11	0	12	0	5	0
Area 3 Total	303	61	109	0	78	36	119	13	39	85	0	18	2	121	1
4. Caroline	22	1	5	0 #	17	1	1	0	20	2	0	3 0	0	2 0	0
Cecil	42	5	18	0	21	0	0	2	7	5	0	1	0	14	0
Dorchester	8	5	6	0	10	0	0	2	26	4	0	2	0	4	0
Kent	6	3	3	0	8	0	0	1	6	0	0	0	0	11	0
Queen Anne's	5	0	14	0	16	0	3	0	1	1	0	0	0	8	0
Somerset	6	1	2	0	4	0	0	0	0	1	0	1	0	0	0
Talbot	32	11	6	0	7	1	1	2	6	4	0	0	0	8	0
Wicomico	41	22	13	0	47	1	0	8	17	21	0	3	0	48	0
Worcester	62	13	12	0	30	1	2	1	10	5	0	0	0	45	0
Area 4 Total	224	61	79	0	160	4	7	16	93	43	0	10	0	140	0
5. Anne Arundel	72	34	104	0	3	39	0	7	29	33	0	7	1	71	0
Calvert	8	1	11	1	55	0	1	0	0	10	0	1	0	3	0
Charles	20	11	20	0	2	0	0	4	7	19	0	0	0	20	0
Prince George's	20	15	69	0	10	13	146	31	45	28	0	8	0	10	0
St.Mary's	51	9	14	0	34	0	0	2	10	13	0	0	0	20	0
Area 5 Total	171	70	218	1	104	52	147	44	91	103	0	16	1	124	0
Out-of-State	0	0	0	0	0	0	1	0	0	0	0	0	0	0	0
State Total	957	331	1415	6	387	106	326	149	445	292	19	88	3	598	9

Table 25
Intake Cases by Alleged Offenses & County of Jurisdiction for Females
FY 2000

Area	Failure to Obey Law	False Report	Reckless Endangerment	Rogue & Vagabond	Telephone Misuse	Unspecified Felony	Misdemeanors	Juris. Total
1. Baltimore City	5	2	0	0	4	0	62	1990
Area 1 Total	5	2	0	0	4	0	62	1990
2. Baltimore	0	7	0	0	31	1	36	2201
Carroll	1	1	0	0	2	0	20	408
Harford	0	5	1	0	1	1	18	507
Howard	0	1	0	0	0	0	2	432
Area 2 Total	1	14	1	0	34	2	76	3548
3. Allegany	0	1	1	0	0	2	13	409
Frederick	0	0	0	0	3	0	27	581
Garrett	0	0	0	0	0	0	2	53
Montgomery	0	4	2	0	6	4	50	846
Washington	0	2	0	0	5	0	16	388
Area 3 Total	0	7	3	0	14	6	108	2277
4. Caroline	1	0	0	0	2	0	10	159
Cecil	0	1	0	0	3	0	11	275
Dorchester	0	0	0	0	1	0	4	180
Kent	0	0	0	0	0	1	16	91
Queen Anne's	0	0	0	0	0	0	6	74
Somerset	0	2	1	0	1	0	5	61
Talbot	0	0	1	0	0	0	5	126
Wicomico	0	4	4	0	5	2	17	634
Worcester	0	1	2	0	0	0	12	298
Area 4 Total	1	8	8	0	12	3	86	1898
5. Anne Arundel	0	0	1	0	12	4	36	1365
Calvert	0	1	1	0	1	0	6	169
Charles	0	1	0	0	4	2	15	516
Prince George's	0	0	0	0	0	0	0	1219
St.Mary's	0	8	0	0	0	0	5	313
Area 5 Total	0	10	2	0	17	6	62	3582
Out-of-State	0	0	0	0	0	2	1	10
State Total	7	41	14	0	81	19	395	13305

Table 26
Alleged Offense Rates Per 1,000 Population by Offense Category & County of Jurisdiction
FY 2000

Area	10 - 17 Yrs. Population	Person - to - Person	Per 1,000 Population	Property	Per 1,000 Population	Alcohol	Per 1,000 Population	Narcotics	Per 1,000 Population	CINS	Per 1,000 Population	Other	Per 1,000 Population	County of Offense Total	County of Offense Per 1,000 Population
1. Baltimore City	72691	2875	39.6	2719	37.4	84	1.2	3011	41.4	257	3.5	1792	24.7	10742	147.8
Area 1 Total	72691	2875	39.6	2719	37.4	84	1.2	3011	41.4	257	3.5	1792	24.7	10742	147.8
2. Baltimore	82688	2268	27.4	3877	46.9	204	2.5	994	12.0	12	0.1	999	12.1	8356	101.1
Carroll	19513	272	13.9	514	26.3	171	8.8	228	11.7	51	2.6	265	13.6	1560	79.9
Harford	27713	342	12.3	639	23.1	96	3.5	332	12.0	7	0.3	664	24.0	2080	75.1
Howard	30577	262	8.6	583	19.1	266	8.7	201	6.6	18	0.6	267	8.7	1601	52.4
Area 2 Total	160491	3144	19.6	5613	35.0	737	4.6	1755	10.9	88	0.5	2195	13.7	13597	84.7
3. Allegany	7470	209	28.0	343	45.9	240	32.1	96	12.9	83	11.1	216	28.9	1197	160.2
Frederick	24235	386	15.9	733	30.2	149	6.1	277	11.4	151	6.2	623	25.7	2321	95.8
Garrett	3525	40	11.3	63	17.9	41	11.6	33	9.4	39	11.1	47	13.3	263	74.6
Montgomery	98282	839	8.5	1666	17.0	328	3.3	455	4.6	27	0.3	898	9.1	4213	42.9
Washington	14134	252	17.8	465	32.9	148	10.5	152	10.8	140	9.9	198	14.0	1355	95.9
Area 3 Total	147646	1726	11.7	3270	22.1	906	6.1	1013	6.9	440	3.0	1982	13.4	9349	63.3
4. Caroline	3858	143	37.1	224	58.1	62	16.1	54	14.0	37	9.6	131	34.0	646	167.4
Cecil	10949	202	18.4	342	31.2	134	12.2	94	8.6	29	2.6	172	15.7	973	88.9
Dorchester	3484	141	40.5	240	68.9	29	8.3	66	18.9	11	3.2	188	54.0	675	193.7
Kent	1962	72	36.7	64	32.6	17	8.7	24	12.2	10	5.1	91	46.4	278	141.7
Queen Anne's	4779	76	15.9	110	23.0	30	6.3	68	14.2	39	8.2	78	16.3	401	83.9
Somerset	2090	82	39.2	82	39.2	14	6.7	31	14.8	7	3.3	38	18.2	254	121.5
Talbot	3486	75	21.5	133	76.0	99	42.0	41	35.0	16	70.0	101	29.0	466	133.7
Wicomico	9718	547	56.3	671	69.0	126	13.0	175	18.0	67	6.9	461	47.4	2048	210.7
Worcester	4588	112	24.4	288	62.8	213	46.4	198	43.2	48	10.5	313	68.2	1172	255.4
Area 4 Total	44914	1450	32.3	2154	48.0	724	16.1	751	16.7	264	5.9	1573	35.0	6913	153.9
5. Anne Arundel	55567	1343	24.2	1985	35.7	219	3.9	717	12.9	79	1.4	855	15.4	5200	93.6
Calvert	10581	135	12.8	193	18.2	31	2.9	76	7.2	91	8.6	118	11.2	645	61.0
Charles	16137	429	26.6	742	46.0	87	5.4	203	12.6	6	0.4	362	22.4	1829	113.3
Prince George's	92559	1219	13.2	2303	24.9	128	1.4	675	7.3	319	3.4	810	8.8	1111	12.0
St.Mary's	10875	228	21.0	337	31.0	86	7.9	140	12.9	43	4.0	234	21.5	5418	498.2
Area 5 Total	185719	3354	18.1	5560	29.9	551	3.0	1811	9.8	538	2.9	2379	12.8	14203	76.5
State Total	611461	12549	121.2	19316	172.4	3002	30.971	8341	85.69	1587	15.8	9921	99.6	54804	526.2

Note: 1. FY 2000 10 - 17 Year old Population Projections are taken from "The U.S. Census Bureau, Population Estimates for States by Age, Sex and Race."

2. Total did not add up to 54,848 because 44 were Out-Of-State Cases..

Table 27
Rates of Total and Delinquent Referrals per 1,000 Youth Population
FY 2000

County of Residence	2000 10 - 17 Yrs. Population	Total Referrals	Per 1,000 pop.	Delinquent Referrals	Per 1,000 pop.
1. Baltimore City	72691	10742	147.8	10400	143.1
Area 1 Total	72691	10742	147.8	10400	143.1
2. Baltimore	82688	8356	101.1	7952	96.2
Carroll	19513	1560	79.9	1274	65.3
Harford	27713	2080	75.1	1564	56.4
Howard	30577	1601	52.4	1246	40.7
Area 2 Total	160491	13597	84.7	12036	75.0
3. Allegany	7470	1197	160.2	814	109.0
Frederick	24235	2321	95.8	1807	74.6
Garrett	3525	263	74.6	181	51.3
Montgomery	98282	4213	42.9	3767	38.3
Washington	14134	1355	95.9	1038	73.4
Area 3 Total	147646	9349	63.3	7607	51.5
4. Caroline	3858	646	167.4	534	138.4
Cecil	10949	973	88.9	771	70.4
Dorchester	3484	675	193.7	616	176.8
Kent	1962	278	141.7	225	114.7
Queen Anne's	4779	401	83.9	304	63.6
Somerset	2090	254	121.5	224	107.2
Talbot	3486	466	133.7	316	90.6
Wicomico	9718	2048	210.7	1691	174.0
Worcester	4588	1172	255.4	770	167.8
Area 4 Total	44914	6913	153.9	5451	121.4
5. Anne Arundel	55567	5200	93.6	4643	83.6
Calvert	10581	645	61.0	512	48.4
Charles	16137	1829	113.3	1666	103.2
Prince George's	92559	1111	12.0	636	6.9
St. Mary's	10875	5418	498.2	5175	475.9
Area 5 Total	185719	14203	76.5	12632	68.0
State Total	611461	54804	89.6	48126	78.7

Note: FY 2000 10-17 Year old Population Projections are taken from "The U.S. Census Bureau, Population Estimates for States by Age, Sex and Race.

Table 28
Court Dispositions of Formalized Cases by Gender
FY 2000

Court Dispositions by Gender	Males	Percent Total	Females	Percent Total	Juris. Total	Percent Total
Probation/prob. to parent/ protective supervision	3632	18.0	747	17.4	4379	17.9
Dismissed/Closed	3873	19.2	743	17.4	4616	18.9
Committed to DJJ for placement	1232	6.1	122	2.8	1354	5.5
Continued case/STET	2085	10.3	552	12.9	2637	10.8
Petition denied by State Attorney*	653	3.2	62	1.4	715	2.9
Petition Withdrawn	26	0.1	12	0.3	38	0.2
Jurisdiction Waived	92	0.5	3	0.1	95	0.4
Inter-Region/State	46	0.2	9	0.2	55	0.2
Nol Pros	173	0.9	42	1.0	215	0.9
Transfer from one jurisdiction to another	44	0.2	16	0.4	60	0.2
Writ Pending	347	1.7	52	1.2	399	1.6
Others	147	0.7	20	0.5	167	0.7
Disposition Pending	7854	38.9	1901	44.4	9755 *	39.8
State Total	20204	100.0	4281	100.0	24485	100.0

Note: * In FY 2000 , The Department switched from ISYS to Assist Client Tracking System. Due to the switch on November 1, 1999 and lack of training provided to staff for 9755 cases court dispositions were never entered.

**Table 29
Court Dispositions of Formalized Cases by Race
FY 2000**

Court Dispositions by Race	African - American	Percent Total	Caucasian	Percent Total	Other	Percent Total	Juris. Total
Probation/prob. to parent/ protective supervision	2248	15.2	1955	22.0	176	22.3	4379
Dismissed/Closed	3226	21.8	1252	14.1	138	17.5	4616
Committed to DJJ for placement	867	5.8	434	4.9	53	6.7	1354
Continued case/STET	1366	9.2	1211	13.7	60	7.6	2637
Petition denied by State Attorney	429	2.9	270	3.0	16	2.0	715
Petition Withdrawn	13	0.1	23	0.3	2	0.3	38
Jurisdiction Waived	51	0.3	32	0.4	12	1.5	95
Inter-Region/State	28	0.2	23	0.3	4	0.5	55
Nol Pros	98	0.7	117	1.3	0	0.0	215
Transfer from one jurisdiction to another	39	0.3	21	0.2	0	0.0	60
Writ Pending	242	1.6	131	1.5	26	3.3	399
Others	84	0.6	80	0.9	3	0.4	167
Disposition Pending*	6134	41.4	3321	37.4	300	38.0	9755 *
State Total	14825	100.0	8870	100.0	790	100.0	24485

Note: * In FY 2000, The Department switched from ISYS to Assist Client Tracking System. Due to this switch on November 1, 1999 and lack of training provided to staff for 9755 cases court dispositions were never entered.