



Maryland Department of Juvenile Justice
One Center Plaza, 120 W. Fayette Street
Baltimore, MD 21201

ANNUAL STATISTICAL REPORT

**FISCAL YEAR
1999**

**Parris N. Glendening
Governor**

**Kathleen Kennedy Townsend
Lt. Governor**

**Bishop L. Robinson
Secretary**

*October 2000
Research Division*

INTRODUCTION

The Maryland Department of Juvenile Justice's Office Research and Program Development is pleased to present its 1999 Annual Statistical Report. The Annual Statistical Report brings together, in a single volume, descriptive statistics¹ of the Maryland Department of Juvenile Justice (DJJ). This report serves as an essential reference book. The numbers contained in this report are used in capital planning, three-year planning and budget documents. Executive, professional, and legislative staff as well as the public rely on these statistics. The Annual Statistical Report contains two sections.

Section One of the report provides the intake profile, which includes case-related information from referral to the court disposition stage. In FY 1999, the Department's Intake Officers handled 55,150 cases. This number of cases represents 39,399 youth. The intake process determines if a youth requires formal court intervention or can be served by pre-court supervision or by processes known as resolving or disapproving the case at intake. A case is counted each time a youth is referred on a new charge during the year.

Section Two provides information about services provided to youths in nonresidential and residential programs. This section contains statistics on DJJ contracted programs, community supervision, and residential services and secure commitment programs. In FY 1999, the Department served 6,113 youths in out of home placements, including secure detention programs. A separate table of contents is provided for Sections One and Two.

¹ The statistics included in this report have been subject to a detailed quality assurance process that involved removing erroneous cases and minimizing the occurrences of "missing" data. Because of this quality assurance review, the statistics presented in this report may slightly vary from those included in earlier Departmental documents.

Section One

Intake Data

TABLE OF CONTENTS

SECTION ONE

Page

FLOW CHART OF CASE REFERRALS i

Table 1	Number and Percent of Intake cases by County of Jurisdiction and by Area: FY 1997 - FY 1999	1
Table 2	Manner of Handling Referrals at Intake by Jurisdiction and by Area: FY 1999	2
Table 3	Rank Order of Formal Cases by County of Jurisdiction: FY 1999	3
Table 4	Number and Percent of Total Intake Cases by Race: FY 1999	3
Table 5	Intake Cases by Race and by County of Jurisdiction: FY 1999	4
Table 6	Manner of Handling Intake Cases by Race and County of Jurisdiction: FY 1999	5
Table 6	Manner of Handling Intake Cases by Race and County of Jurisdiction: FY 1999	6
Table 7	Number and Percent of Total Intake Cases by Gender: FY 1999	7
Table 8	Manner of Handling Intake Cases by Gender and County of Jurisdiction: FY 1999	8
Table 9	Intake Cases by Race, Gender and County of Jurisdiction: FY 1999	9
Table 10	Number and Percent of Total Intake Cases by Age: FY 1999	10
Table 11	Intake Cases by Age and County of Jurisdiction: FY 1999	11
Table 12	Intake Cases by Age and County of Jurisdiction for African-American Youth: FY 1999	12
Table 13	Intake Cases by Age and County of Jurisdiction for Caucasian Youth: FY 1999	13
Table 14	Intake Cases by Age and County of Jurisdiction for Hispanic Youth: FY 1999	14
Table 15	Intake Cases by Age and County of Jurisdiction for Males: FY 1999	15
Table 16	Intake Cases by Age and County of Jurisdiction for Females: FY 1999	16

Table 17	Number & Percent of Total Intake Cases by Referral Source: FY 1999	17
Table 18	Intake Cases by Referral Source & County of Jurisdiction: FY 1999	17
Table 19	Intakes Cases - Offense by Offense Type: FY 1997 - FY 1999	18
Table 20	Intake Cases by Alleged Offenses & County of Jurisdiction: FY 1999	19
Table 20	Intake Cases by Alleged Offenses & County of Jurisdiction: FY 1999	20
Table 20	Intake Cases by Alleged Offenses & County of Jurisdiction: FY 1999	21
Table 21	Intake Cases by Alleged Offenses & County of Residence: FY 1999	22
Table 21	Intake Cases by Alleged Offenses & County of Residence: FY 1999	23
Table 21	Intake Cases by Alleged Offenses & County of Residence: FY 1999	24
Table 22	Intake Cases by Alleged Offenses & County of Offense: FY 1999	25
Table 22	Intake Cases by Alleged Offenses & County of Offense: FY 1999	26
Table 22	Intake Cases by Alleged Offenses & County of Offense: FY 1999	27
Table 23	Intake Cases by Alleged Offenses and County of Jurisdiction for African-American Youth: FY 1999	28
Table 23	Intake Cases by Alleged Offenses and County of Jurisdiction for African-American Youth: FY 1999	29
Table 23	Intake Cases by Alleged Offenses and County of Jurisdiction for African-American Youth: FY 1999	30
Table 24	Intake Cases by Alleged Offenses and County of Jurisdiction for Caucasian Youth: FY 1999	31
Table 24	Intake Cases by Alleged Offenses and County of Jurisdiction for Caucasian Youth: FY 1999	32
Table 24	Intake Cases by Alleged Offenses and County of Jurisdiction for Caucasian Youth: FY 1999	33
Table 25	Intake Cases by Alleged Offenses and County of Jurisdiction for Hispanic Youth: FY 1999	34
Table 25	Intake Cases by Alleged Offenses and County of Jurisdiction for Hispanic Youth: FY 1999	35
Table 25	Intake Cases by Alleged Offenses and County of Jurisdiction for Hispanic Youth: FY 1999	36
Table 26	Intake Cases by Alleged Offenses and County of Jurisdiction for Males: FY 1999	37
Table 26	Intake Cases by Alleged Offenses and County of Jurisdiction for Males: FY 1999	38

Table 26	Intake Cases by Alleged Offenses and County of Jurisdiction for Males: FY 1999	39
Table 27	Intake Cases by Alleged Offenses and County of Jurisdiction for Females: FY 1999	40
Table 27	Intake Cases by Alleged Offenses and County of Jurisdiction for Females: FY 1999	41
Table 27	Intake Cases by Alleged Offenses and County of Jurisdiction for Females: FY 1999	42
Table 28	Alleged Offense Rates Per 1,000 Population by Offense Category & County of Residence: FY 1999	43
Table 29	Alleged Offense Rates Per 1,000 Population by Offense Category & County of Offense: FY 1999	44
Table 30	Rates of Total and Delinquent Referrals Per 1,000 Youth Population: FY 1999	45
Table 31	Court Disposition of Formalized Cases by Gender: FY 1999	46
Table 32	Court Disposition of Formalized Cases by Race: FY 1999	47

Flow Chart of Case Referrals in the Maryland Juvenile Justice System FY 1999

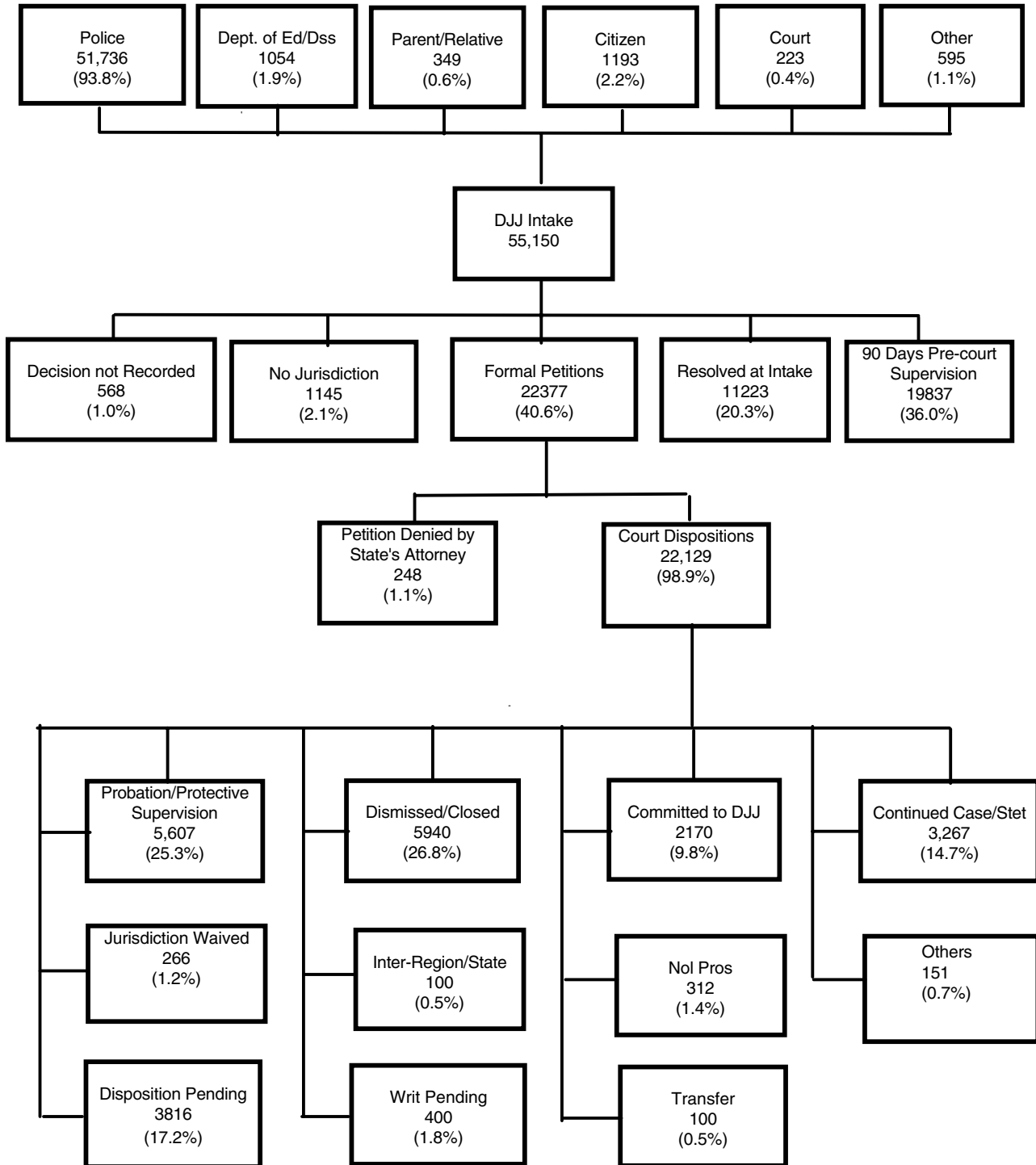


Table 1
Number and Percent of Intake Cases by County of Jurisdiction and by Area
FY 1997 - FY 1999

Area	1997 Cases	Percent of Cases	1998 Cases	Percent of Cases	1999 Cases	Percent of Cases	Percent Change '98 to '99
1. Baltimore City	13880	23.9	11428	20.5	12088	21.9	5.8%
Area 1 Total	13880	23.9	11428	20.5	12088	21.9	5.8%
2. Baltimore	9316	16.1	7934	14.2	7558	13.7	-4.7%
Carroll	1167	2.0	1183	2.1	1285	2.3	8.6%
Harford	1494	2.6	2096	3.8	2085	3.8	-0.5%
Howard	1791	3.1	1980	3.6	1553	2.8	-21.6%
Area 2 Total	13768	23.7	13193	23.7	12481	22.6	-5.4%
3. Allegany	1252	2.2	1343	2.4	1132	2.1	-15.7%
Frederick	2482	4.3	2059	3.7	2093	3.8	1.7%
Garrett	256	0.4	271	0.5	227	0.4	-16.2%
Washington	1304	2.2	1450	2.6	1332	2.4	-8.1%
Area 3 Total	5294	9.1	5123	9.2	4784	8.7	-6.6%
4. Caroline	558	1.0	612	1.1	610	1.1	-0.3%
Cecil	1208	2.1	1145	2.1	1097	2.0	-4.2%
Dorchester	568	1.0	542	1.0	569	1.0	5.0%
Kent	213	0.4	368	0.7	318	0.6	-13.6%
Queen Anne's	463	0.8	414	0.7	456	0.8	10.1%
Somerset	247	0.4	221	0.4	273	0.5	23.5%
Talbot	539	0.9	611	1.1	659	1.2	7.9%
Wicomico	1268	2.2	1369	2.5	1580	2.9	15.4%
Worcester	1423	2.5	1624	2.9	1405	2.5	-13.5%
Area 4 Total	6487	11.2	6906	12.4	6967	12.6	0.9%
5. Montgomery	4374	7.5	4837	8.7	3951	7.2	-18.3%
Area 5 Total	4374	7.5	4837	8.7	3951	7.2	-18.3%
6. Anne Arundel	5315	9.2	5730	10.3	5686	10.3	-0.8%
Calvert	943	1.6	910	1.6	935	1.7	2.7%
Charles	1484	2.6	1637	2.9	1655	3.0	1.1%
St. Mary's	965	1.7	911	1.6	1002	1.8	10.0%
Area 6 Total	8707	15.0	9188	16.5	9278	16.8	1.0%
7. Prince George's	5515	9.5	5057	9.1	5601	10.2	10.8%
Area 7 Total	5515	9.5	5057	9.1	5601	10.2	10.8%
State Total	58025	100.0	55732	100.0	55150	100.0	-1.0%

Table 2
Manner of Handling Referrals at Intake by Jurisdiction and by Area
FY 1999

Area	Formal Petition	Percent Formal Cases	90 Days Pre - Court Supervision	Percent 90 Days Per - Court Supervision	Resolved at Intake	Percent Resolved at Intake	No Jurisdiction	Percent No Jurisdiction	Decision not Recorded	Percent Decision not Recorded	Juris. Total	Percent of Cases
1. Baltimore City	8272	68.4	2747	22.7	728	6.0	163	1.3	178	1.5	12088	100.0
Area 1 Total	8272	68.4	2747	22.7	728	6.0	163	1.3	178	1.5	12088	100.0
2. Baltimore	3404	45.0	2389	31.6	1591	21.1	157	2.1	17	0.2	7558	100.0
Carroll	414	32.2	555	43.2	298	23.2	8	0.6	10	0.8	1285	100.0
Harford	650	31.2	872	41.8	512	24.6	50	2.4	1	0.0	2085	100.0
Howard	508	32.7	667	42.9	297	19.1	39	2.5	42	2.7	1553	100.0
Area 2 Total	4976	39.9	4483	35.9	2698	21.6	254	2.0	70	0.6	12481	100.0
3. Allegany	225	19.9	543	48.0	352	31.1	8	0.7	4	0.4	1132	100.0
Frederick	797	38.1	874	41.8	363	17.3	56	2.7	3	0.1	2093	100.0
Garrett	70	30.8	104	45.8	47	20.7	5	2.2	1	0.4	227	100.0
Washington	311	23.3	561	42.1	307	23.0	142	10.7	11	0.8	1332	100.0
Area 3 Total	1403	29.3	2082	43.5	1069	22.3	211	4.4	19	0.4	4784	100.0
4. Caroline	105	17.2	291	47.7	168	27.5	36	5.9	10	1.6	610	100.0
Cecil	431	39.3	420	38.3	219	20.0	25	2.3	2	0.2	1097	100.0
Dorchester	78	13.7	204	35.9	250	43.9	36	6.3	1	0.2	569	100.0
Kent	72	22.6	72	22.6	148	46.5	7	2.2	19	6.0	318	100.0
Queen Anne's	83	18.2	198	43.4	148	32.5	20	4.4	7	1.5	456	100.0
Somerset	72	26.4	139	50.9	25	9.2	24	8.8	13	4.8	273	100.0
Talbot	129	19.6	237	36.0	269	40.8	18	2.7	6	0.9	659	100.0
Wicomico	364	23.0	789	49.9	360	22.8	60	3.8	7	0.4	1580	100.0
Worcester	197	14.0	720	51.2	262	18.6	165	11.7	61	4.3	1405	100.0
Area 4 Total	1531	22.0	3070	44.1	1849	26.5	391	5.6	126	1.8	6967	100.0
5. Montgomery	1399	35.4	1710	43.3	771	19.5	12	0.3	59	1.5	3951	100.0
Area 5 Total	1399	35.4	1710	43.3	771	19.5	12	0.3	59	1.5	3951	100.0
6. Anne Arundel	1920	33.8	2336	41.1	1318	23.2	77	1.4	35	0.6	5686	100.0
Calvert	349	37.3	305	32.6	252	27.0	11	1.2	18	1.9	935	100.0
Charles	428	25.9	891	53.8	315	19.0	8	0.5	13	0.8	1655	100.0
St. Mary's	272	27.1	382	38.1	338	33.7	0	0.0	10	1.0	1002	100.0
Area 6 Total	2969	32.0	3914	42.2	2223	24.0	96	1.0	76	0.8	9278	100.0
7. Prince George's	1827	32.6	1831	32.7	1885	33.7	18	0.3	40	0.7	5601	100.0
Area 7 Total	1827	32.6	1831	32.7	1885	33.7	18	0.3	40	0.7	5601	100.0
State Total	22377	40.6	19837	36.0	11223	20.3	1145	2.1	568	1.0	55150	100.0

Table 3
Rank Order of Formal Cases by County of Jurisdiction
FY 1999

Jurisdictions Area	Formal	% Formal Cases
Baltimore City	8272	68.4
Baltimore Co.	3404	45.0
Cecil	431	39.3
Calvert	349	37.3
Montgomery	1399	35.4
Anne Arundel	1920	33.8
Fredrick	797	33.1
Howard	508	32.7
Prince George's	1827	32.6
Carroll	414	32.2
Harford	650	31.2
Garrett	70	30.8
St. Mary's	272	27.1
Somerset	72	26.4
Charles	428	25.9
Washington	311	23.3
Wicomico	364	23.0
kent	72	22.6
Allegany	225	19.9
Talbot	129	19.6
Queen Anne's	83	18.2
Caroline	105	17.2
Worcester	197	14.0
Dorchester	78	13.7

Table 4
Number and Percent of Intake Cases by Race
FY 1999

Manner of Handling Cases	African-American	% African-American	Caucasian	% Caucasian	Hispanic	% Hispanic	Other	% Other	Total	% Total
Formal	13925	51.5	7963	29.7	270	38.5	219	33.9	22377	40.6
90 Days Pre-Court Supervision	7533	27.9	11813	44.1	227	32.3	264	40.9	19837	36.0
Resolved at Intake	4846	17.9	6054	22.6	180	25.6	143	22.2	11223	20.3
No Jurisdiction	416	1.5	704	2.6	12	1.7	13	2.0	1145	2.1
Decision not Recorded	312	1.2	237	0.9	13	1.9	6	1.0	568	1.0
State Total	27,032	100.0	26,771	100.0	702	100.0	645	100.0	55,150	100.0

Table 5
Intake Cases by Race and by County of Jurisdiction
FY 1999

Area	African - American	Percent African - American	Caucasian	Percent Caucasian	Hispanic	Percent Hispanic	Juris. Total *
1. Baltimore City	10597	87.7	1428	11.8	25	0.2	12088
Area 1 Total	10597	87.7	1428	11.8	25	0.2	12088
2. Baltimore	3564	47.2	3908	51.7	21	0.3	7558
Carroll	84	6.5	1189	92.5	9	0.7	1285
Harford	488	23.4	1573	75.4	13	0.6	2085
Howard	499	32.1	995	64.1	9	0.6	1553
Area 2 Total	4635	37.1	7665	61.4	52	0.4	12481
3. Allegany	91	8.0	1040	91.9	0	0.0	1132
Frederick	440	21.0	1602	76.5	25	1.2	2093
Garrett	4	1.8	223	98.2	0	0.0	227
Washington	178	13.4	1107	83.1	12	0.9	1332
Area 3 Total	713	14.9	3972	83.0	37	0.8	4784
4. Caroline	186	30.5	418	68.5	5	0.8	610
Cecil	75	6.8	997	90.9	17	1.5	1097
Dorchester	310	54.5	253	44.5	5	0.9	569
Kent	128	40.3	190	59.7	0	0.0	318
Queen Anne's	85	18.6	367	80.5	4	0.9	456
Somerset	151	55.3	121	44.3	1	0.4	273
Talbot	169	25.6	485	73.6	1	0.2	659
Wicomico	779	49.3	778	49.2	7	0.4	1580
Worcester	228	16.2	1140	81.1	22	1.6	1405
Area 4 Total	2111	30.3	4749	68.2	62	0.9	6967
5. Montgomery	1651	41.8	1829	46.3	336	8.5	3951
Area 4 Total	1651	41.8	1829	46.3	336	8.5	3951
6. Anne Arundel	1531	26.9	4055	71.3	30	0.5	5686
Calvert	166	17.8	763	81.6	5	0.5	935
Charles	684	41.3	959	57.9	6	0.4	1655
St. Mary's	299	29.8	676	67.5	6	0.6	1002
Area 5 Total	2680	28.9	6453	69.6	47	0.5	9278
7. Prince George's	4645	82.9	675	12.1	143	2.6	5601
Area 5 Total	4645	82.9	675	12.1	143	2.6	5601
State Total	27032	49.0	26771	48.5	702	1.3	55150

Note: * Jurisdiction total includes American- Indian, Asian, and Bi-racial groups.

Table 6a
Manner of Handling Intake Cases by Race and County of Jurisdiction
FY 1999

Area	African - American					Caucasian				
	Formal	Informal	Resolved at Intake	Decision not Recorded	Total	Formal	Informal	Resolved at Intake	Decision not Recorded	Total
1. Baltimore City	7372	2332	732	161	10597	860	403	150	15	1428
Area 1 Total	7372	2332	732	161	10597	860	403	150	15	1428
2. Baltimore	1864	885	803	12	3564	1508	1473	922	5	3908
Carroll	44	23	16	1	84	368	527	286	8	1189
Harford	225	116	147	0	488	419	744	409	1	1573
Howard	212	157	115	15	499	267	491	211	26	995
Area 2 Total	2345	1181	1081	28	4635	2562	3235	1828	40	7665
3. Allegany	14	42	35	0	91	211	500	325	4	1040
Frederick	217	116	105	2	440	554	742	305	1	1602
Garrett	2	1	1	0	4	68	103	51	1	223
Washington	55	61	59	3	178	247	471	381	8	1107
Area 3 Total	288	220	200	5	713	1080	1816	1062	14	3972
4. Caroline	38	80	65	3	186	67	208	136	7	418
Cecil	38	17	20	0	75	380	399	216	2	997
Dorchester	40	104	166	0	310	36	98	118	1	253
Kent	32	26	64	6	128	40	46	91	13	190
Queen Anne's	23	37	25	0	85	60	160	140	7	367
Somerset	46	64	32	9	151	26	75	16	4	121
Talbot	42	51	73	3	169	87	184	211	3	485
Wicomico	221	338	215	5	779	140	439	198	1	778
Worcester	79	60	83	6	228	114	645	327	54	1140
Area 4 Total	559	777	743	32	2111	950	2254	1453	92	4749
5. Montgomery	661	583	377	30	1651	540	955	314	20	1829
Area 5 Total	661	583	377	30	1651	540	955	314	20	1829
6. Anne Arundel	752	416	349	14	1531	1136	1877	1022	20	4055
Calvert	74	60	29	3	166	272	244	233	14	763
Charles	201	384	95	4	684	225	498	227	9	959
St. Mary's	81	108	107	3	299	183	267	219	7	676
Area 6 Total	1108	968	580	24	2680	1816	2886	1701	50	6453
7. Prince George's	1592	1472	1549	0	4645	155	264	250	6	675
Area 7 Total	1592	1472	1549	32	4645	155	264	250	6	675
State Total	13925	7533	5262	312	27032	7963	11813	6758	237	26771

Table 6b
Manner of Handling Intake Cases by Race and County of Jurisdiction
FY 1999

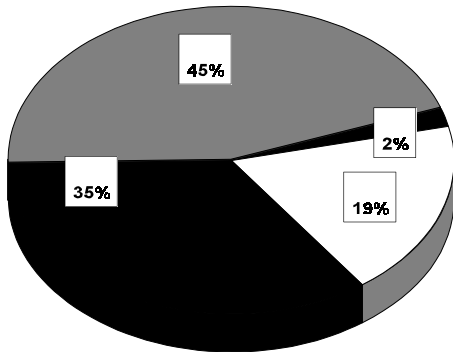
Area	Hispanic					Total	Juris. Total *
	Formal	Informal	Resolved at Intake	Decision Not Recorded			
1. Baltimore City	15	4	4	2	25	12088	
Area 1 Total	15	4	4	2	25	12088	
2. Baltimore	11	6	4	0	21	7558	
Carroll	2	4	2	1	9	1285	
Harford	2	8	3	0	13	2085	
Howard	4	2	2	1	9	1553	
Area 2 Total	19	20	11	2	52	12481	
3. Allegany	0	0	0	0	0	1132	
Frederick	13	7	5	0	25	2093	
Garrett	0	0	0	0	0	227	
Washington	2	7	3	0	12	1332	
Area 3 Total	15	14	8	0	37	4784	
4. Caroline	0	3	1	1	5	610	
Cecil	9	2	6	0	17	1097	
Dorchester	2	2	1	0	5	569	
Kent	0	0	0	0	0	318	
Queen Anne's	0	1	3	0	4	456	
Somerset	0	0	1	0	1	273	
Talbot	0	1	0	0	1	659	
Wicomico	0	2	5	0	7	1580	
Worcester	2	6	14	0	22	1405	
Area 4 Total	13	17	31	1	62	6967	
Montgomery	147	122	60	7	336	3951	
Area 5 Total	147	122	60	7	336	3951	
5. Anne Arundel	11	8	11	0	30	5686	
Calvert	3	0	1	1	5	935	
Charles	0	5	1	0	6	1655	
St. Mary's	2	2	2	0	6	1002	
Area 6 Total	16	15	15	1	47	9278	
Prince George's	45	35	62	1	143	5601	
Area 7 Total	45	35	62	1	143	5601	
State Total	270	227	191	14	702	55150	

Note: * Jurisdiction total include American-Indian, Asian and Bi-racial groups.

**Table 7
Number and Percent of Total Cases by Gender
FY 1999**

Manner of Handling Cases	Males	Percent Males	Females	Percent Females	Total
Formal	18530	44.5%	3847	28.6%	22377
90 Days Pre-Court Supervision	14233	34.1%	5604	41.6%	19837
Resolved at Intake	7690	18.4%	3533	26.2%	11223
No Jurisdiction	801	1.9%	344	2.6%	1145
Decision not recorded	433	1.0%	135	1.0%	568
State Total	41687	100.0%	13463	100.0%	55150

Males



Females

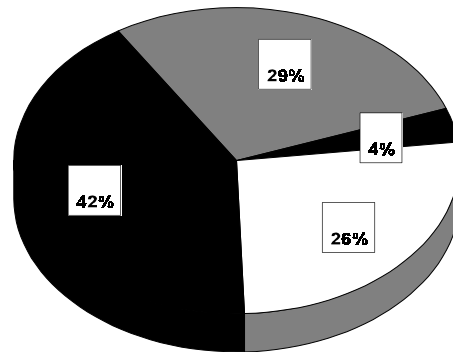


Table 8
Manner of Handling Intake Cases by Gender and County of Jurisdiction
FY 1999

Area	Male						Female						Juris. Total
	Formal	Informal	Resolved at Intake	Decision not Recorded	Total	Percent Juris. Total	Formal	Informal	Resolved at Intake	Decision not Recorded	Total	Percent Juris. Total	
1. Baltimore City	7034	1995	627	148	9804	81.1%	1238	752	264	30	2284	18.9%	12088
Area 1 Total	7034	1995	627	148	9804	81.1%	1238	752	264	30	2284	18.9%	12088
Baltimore	2631	1626	1187	12	5456	72.2%	773	763	561	5	2102	27.8%	7558
Carroll	309	367	220	8	904	70.4%	105	188	86	2	381	29.6%	1285
Harford	539	630	368	0	1537	73.7%	111	242	194	1	548	26.3%	2085
Howard	408	481	214	37	1140	73.4%	100	186	122	5	413	26.6%	1553
Area 2 Total	3887	3104	1989	57	9037	72.4%	1089	1379	963	13	3444	27.6%	12481
3. Allegany	177	361	211	2	751	66.3%	48	182	149	2	381	33.7%	1132
Frederick	652	605	281	3	1541	73.6%	145	269	138	0	552	26.4%	2093
Garrett	55	73	36	1	165	72.7%	15	31	16	0	62	27.3%	227
Washington	258	407	311	10	986	74.0%	53	154	138	1	346	26.0%	1332
Area 3 Total	1142	1446	839	16	3443	72.0%	261	636	441	3	1341	28.0%	4784
4. Caroline	79	222	142	9	452	74.1%	26	69	62	1	158	25.9%	610
Cecil	341	291	161	1	794	72.4%	90	129	83	1	303	27.6%	1097
Dorchester	71	164	180	1	416	73.1%	7	40	106	0	153	26.9%	569
Kent	57	43	112	14	226	71.1%	15	29	43	5	92	28.9%	318
Queen Anne's	77	156	117	5	355	77.9%	6	42	51	2	101	22.1%	456
Somerset	65	89	20	11	185	67.8%	7	50	29	2	88	32.2%	273
Talbot	103	169	204	5	481	73.0%	26	68	83	1	178	27.0%	659
Wicomico	312	582	270	6	1170	74.1%	52	207	150	1	410	25.9%	1580
Worcester	166	520	312	40	1038	73.9%	31	200	115	21	367	26.1%	1405
Area 4 Total	1271	2236	1518	92	5117	73.4%	260	834	722	34	1850	26.6%	6967
5. Montgomery	1220	1285	529	28	3062	77.5%	179	425	254	31	889	22.5%	3951
Area 4 Total	1220	1285	529	28	3062	77.5%	179	425	254	31	889	22.5%	3951
6. Anne Arundel	1529	1672	950	26	4177	73.5%	391	664	445	9	1509	26.5%	5686
Calvert	284	225	151	17	677	72.4%	65	80	112	1	258	27.6%	935
Charles	340	565	241	9	1155	69.8%	88	326	82	4	500	30.2%	1655
St. Mary's	230	281	210	9	730	72.9%	42	101	128	1	272	27.1%	1002
Area 6 Total	2383	2743	1552	61	6739	72.6%	586	1171	767	15	2539	27.4%	9278
7. Prince George's	1593	1424	1437	31	4485	80.1%	234	407	466	9	1116	19.9%	5601
Area 7 Total	1593	1424	1437	31	4485	80.1%	234	407	466	9	1116	19.9%	5601
State Total	18530	14233	8491	433	41687	75.6%	3847	5604	3877	135	13463	24.4%	55150

Table 9
Intake Cases by Race, Gender, and County of Jurisdiction
FY 1999

Area	African - American					Caucasian					Hispanic				
	Male	Percent Total	Female	Percent Total	Juris. Total	Male	Percent Total	Female	Percent Total	Juris. Total	Male	Percent Total	Female	Percent Total	Juris. Total *
1. Baltimore City	8678	81.9%	1919	18.1%	10597	1073	75.1%	355	24.9%	1428	21	84.0%	4	16.0%	25
Area 1 Total	8678	81.9%	1919	18.1%	10597	1073	75.1%	355	24.9%	1428	21	84.0%	4	16.0%	25
2. Baltimore	2568	72.1%	996	27.9%	3564	2823	72.2%	1085	27.8%	3908	18	85.7%	3	14.3%	21
Carroll	61	72.6%	23	27.4%	84	836	70.3%	353	29.7%	1189	6	66.7%	3	33.3%	9
Harford	376	77.0%	112	23.0%	488	1139	72.4%	434	27.6%	1573	12	92.3%	1	7.7%	13
Howard	387	77.6%	112	22.4%	499	707	71.1%	288	28.9%	995	5	55.6%	4	44.4%	9
Area 2 Total	3392	73.2%	1243	26.8%	4635	5505	71.8%	2160	28.2%	7665	41	78.8%	11	21.2%	52
3. Allegany	62	68.1%	29	31.9%	91	689	66.3%	351	33.8%	1040	0	0.0%	0	0.0%	0
Frederick	344	78.2%	96	21.8%	440	1153	72.0%	449	28.0%	1602	20	80.0%	5	20.0%	25
Garrett	3	75.0%	1	25.0%	4	162	72.6%	61	27.4%	223	0	0.0%	0	0.0%	0
Washington	143	80.3%	35	19.7%	178	809	73.1%	298	26.9%	1107	9	75.0%	3	25.0%	12
Area 3 Total	552	77.4%	161	22.6%	713	2813	70.8%	1159	29.2%	3972	29	78.4%	8	21.6%	37
4. Caroline	138	74.2%	48	25.8%	186	312	74.6%	106	25.4%	418	2	40.0%	3	60.0%	5
Cecil	55	73.3%	20	26.7%	75	719	72.1%	278	27.9%	997	16	94.1%	1	5.9%	17
Dorchester	227	73.2%	83	26.8%	310	183	72.3%	70	27.7%	253	5	0.0%	0	0.0%	5
Kent	80	62.5%	48	37.5%	128	146	76.8%	44	23.2%	190	0	0.0%	0	0.0%	0
Queen Anne's	72	84.7%	13	15.3%	85	279	76.0%	88	24.0%	367	4	0.0%	0	0.0%	4
Somerset	101	66.9%	50	33.1%	151	83	68.6%	38	31.4%	121	1	0.0%	0	0.0%	1
Talbot	119	70.4%	50	29.6%	169	360	74.2%	125	25.8%	485	0	0.0%	1	0.0%	1
Wicomico	555	71.2%	224	28.8%	779	599	77.0%	179	23.0%	778	5	71.4%	2	28.6%	7
Worcester	168	73.7%	60	26.3%	228	841	73.8%	299	26.2%	1140	17	77.3%	5	22.7%	22
Area 4 Total	1515	71.8%	596	28.2%	2111	3522	74.2%	1227	25.8%	4749	50	80.6%	12	19.4%	62
Montgomery	1288	78.0%	363	22.0%	1651	1400	76.5%	429	23.5%	1829	279	83.0%	57	17.0%	336
Area 5 Total	1288	78.0%	363	22.0%	1651	1400	76.5%	429	23.5%	1829	279	83.0%	57	17.0%	336
6. Anne Arundel	1158	75.6%	373	24.4%	1531	2940	72.5%	1115	27.5%	4055	24	80.0%	6	20.0%	30
Calvert	137	82.5%	29	17.5%	166	534	70.0%	229	30.0%	763	5	0.0%	0	0.0%	5
Charles	496	72.5%	188	27.5%	684	651	67.9%	308	32.1%	959	6	100.0%	0	0.0%	6
St. Mary's	217	72.6%	82	27.4%	299	493	72.9%	183	27.1%	676	3	0.0%	3	0.0%	6
Area 6 Total	2008	74.9%	672	25.1%	2680	4618	71.6%	1835	28.4%	6453	38	80.9%	9	19.1%	47
Prince George's	3750	80.7%	895	19.3%	4645	507	75.1%	168	24.9%	675	117	81.8%	26	18.2%	143
Area 7 Total	3750	80.7%	895	19.3%	4645	507	75.1%	168	24.9%	675	117	81.8%	26	18.2%	143
State Total	21183	78.4%	5849	21.6%	27032	19438	72.6%	7333	27.4%	26771	575	81.9%	127	18.1%	702

Note: * Jurisdiction total includes American- Indian, Asian, and Bi-racial groups.

Table 10
Number and Percent of Total Intake Cases by Age

Age of Youth	1997 Cases	Percent Cases	1998 Cases	Percent Cases	1999 Cases	Percent Cases	% Change '98 to '99
Under 10	947	1.6	925	1.6	896	1.6	-3.1
ten	830	1.4	797	1.4	879	1.6	10.3
eleven	1709	2.9	1458	2.5	1467	2.6	0.6
twelve	3070	5.3	2771	4.8	2749	4.9	-0.8
thirteen	5236	9.0	4786	8.2	4850	8.7	1.3
fourteen	8283	14.3	7526	13.0	7416	13.3	-1.5
fifteen	10932	18.8	10335	17.8	10183	18.3	-1.5
sixteen	12403	21.4	12049	20.8	11886	21.3	-1.4
seventeen	13001	22.4	13573	23.4	13241	23.8	-2.4
eighteen	1332	2.3	1331	2.3	1389	2.5	4.4
other/unknown	282	0.5	181	0.3	194	0.3	7.2
State Total	58025	100.0	55732	96.0	55150	99.0	-1.0

Total Intake Cases by Age
FY 1999

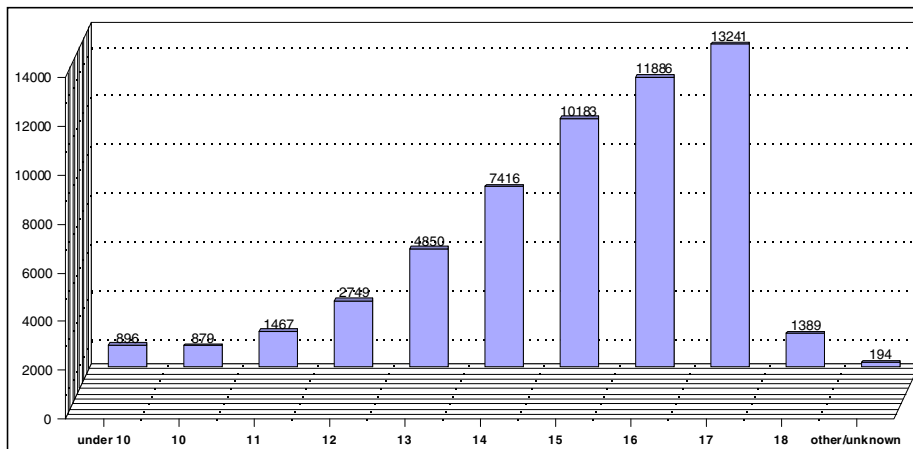


Table 11
Intake Cases by Age and County of Jurisdiction
FY 1999

Area	<10	10	11	12	13	14	15	16	17	18	Over 18	age/ unknown	Juris. Total
1. Baltimore City	225	235	354	703	1144	1656	2248	2450	2550	437	27	59	12088
Area 1 Total	225	235	354	703	1144	1656	2248	2450	2550	437	27	59	12088
2. Baltimore	127	145	222	418	747	1125	1461	1564	1576	158	11	4	7558
Carroll	16	17	29	74	127	186	242	286	265	32	1	10	1285
Harford	29	23	32	69	162	287	414	469	527	63	8	2	2085
Howard	20	20	33	72	84	164	276	399	430	50	4	1	1553
Area 2 Total	192	205	316	633	1120	1762	2393	2718	2798	303	24	17	12481
3. Allegany	26	26	31	66	88	137	201	238	301	12	1	5	1132
Frederick	26	21	52	113	186	302	423	440	492	35	3	0	2093
Garrett	3	2	6	12	19	36	37	42	67	1	2	0	227
Washington	24	26	50	70	125	228	218	271	301	17	0	2	1332
Area 3 Total	79	75	139	261	418	703	879	991	1161	65	6	7	4784
4. Caroline	21	12	30	44	59	62	100	130	138	14	0	0	610
Cecil	35	22	42	61	114	189	183	186	248	16	1	0	1097
Dorchester	26	19	25	30	70	51	94	113	136	4	1	0	569
Kent	1	7	8	13	25	39	57	69	96	3	0	0	318
Queen Anne's	3	5	4	24	39	52	78	120	122	9	0	0	456
Somerset	10	7	8	12	27	35	36	64	71	3	0	0	273
Talbot	12	10	20	38	51	65	94	157	202	10	0	0	659
Wicomico	31	33	49	100	213	246	296	299	286	25	2	0	1580
Worcester	13	8	12	29	63	146	221	354	544	13	2	0	1405
Area 4 Total	152	123	198	351	661	885	1159	1492	1843	97	6	0	6967
5. Montgomery	45	44	72	147	279	445	719	911	1126	147	9	7	3951
Area 5 Total	45	44	72	147	279	445	719	911	1126	147	9	7	3951
6. Anne Arundel	81	84	168	261	474	752	1140	1277	1378	62	6	3	5686
Calvert	10	14	24	48	80	130	156	179	259	30	2	3	935
Charles	39	24	57	87	151	204	241	369	437	44	2	0	1655
St. Mary's	18	11	20	42	60	129	188	254	269	11	0	0	1002
Area 6 Total	148	133	269	438	765	1215	1725	2079	2343	147	10	6	9278
7. Prince George's	55	64	119	216	463	750	1060	1245	1420	193	8	8	5601
Area 7 Total	55	64	119	216	463	750	1060	1245	1420	193	8	8	5601
State Total	896	879	1467	2749	4850	7416	10183	11886	13241	1389	90	104	55150

Table 12
Intake Cases by Age and County of Jurisdiction for African-American Youth
FY 1999

Area	<10	10	11	12	13	14	15	16	17	18	Over 18	age/ unknown	Juris. Total
1. Baltimore City	199	214	319	611	999	1452	2001	2138	2209	387	20	0	10549
Area 1 Total	199	214	319	611	999	1452	2001	2138	2209	387	20	0	10549
2. Baltimore	66	87	132	221	355	572	745	679	636	64	7	0	3564
Carroll	0	0	3	4	11	10	24	18	13	1	0	0	84
Harford	14	10	9	21	46	65	92	92	121	15	3	0	488
Howard	7	12	22	43	47	55	82	114	105	9	2	0	498
Area 2 Total	87	109	166	289	459	702	943	903	875	89	12	0	4634
3. Allegany	1	6	7	8	7	12	10	19	19	1	0	0	90
Frederick	8	8	12	27	61	66	96	71	89	2	0	0	440
Garrett	0	0	0	0	0	0	0	2	0	0	2	0	4
Washington	4	4	10	13	11	29	27	35	43	2	0	0	178
Area 3 Total	13	18	29	48	79	107	133	127	151	5	2	0	712
4. Caroline	12	7	14	24	22	14	35	26	26	6	0	0	186
Cecil	3	3	8	4	5	13	7	7	22	3	0	0	75
Dorchester	19	15	17	18	49	30	54	52	53	2	1	0	310
Kent	1	6	3	8	5	20	28	22	34	1	0	0	128
Queen Anne's	3	0	2	3	7	9	18	21	19	3	0	0	85
Somerset	7	4	8	6	19	21	23	31	31	1	0	0	151
Talbot	8	9	10	14	12	27	22	25	39	3	0	0	169
Wicomico	17	22	30	57	115	135	161	124	107	11	0	0	779
Worcester	6	3	8	14	23	30	40	54	48	0	2	0	228
Area 4 Total	76	69	100	148	257	299	388	362	379	30	3	0	2111
5. Montgomery	26	25	43	84	146	211	323	353	394	41	2	0	1648
Area 5 Total	26	25	43	84	146	211	323	353	394	41	2	0	1648
6. Anne Arundel	35	29	64	123	154	211	277	293	324	18	2	0	1530
Calvert	1	2	5	9	15	25	28	28	45	5	0	0	163
Charles	20	16	32	51	75	91	97	136	146	19	1	0	684
St. Mary's	8	7	11	16	15	41	73	60	65	3	0	0	299
Area 5 Total	64	54	112	199	259	368	475	517	580	45	3	0	2676
7. Prince George's	47	57	107	196	413	634	863	1020	1153	142	6	0	4638
Area 7 Total	47	57	107	196	413	634	863	1020	1153	142	6	0	4638
State Total	512	546	876	1575	2612	3773	5126	5420	5741	739	48	64	27032

Table 13
Intake Cases by Age and County of Jurisdiction for Caucasian Youth
FY 1999

Area	<10	10	11	12	13	14	15	16	17	18	over 18	age unknown	Juris. Total
1. Baltimore City	26	21	35	90	140	192	238	303	320	48	5	10	1428
Area 1 Total	26	21	35	90	140	192	238	303	320	48	5	10	1428
2. Baltimore	59	58	89	195	383	540	701	864	919	92	4	0	3904
Carroll	16	17	26	70	116	175	214	263	250	31	1	0	1179
Harford	15	13	23	45	113	216	320	375	399	47	5	0	1571
Howard	11	7	11	29	32	103	184	269	308	39	2	0	995
Area 2 Total	101	95	149	339	644	1034	1419	1771	1876	209	12	0	7649
3. Allegany	25	20	24	58	81	125	191	219	281	11	1	4	1040
Frederick	18	12	40	84	120	231	313	351	399	31	3	0	1602
Garrett	3	2	6	12	19	36	37	40	67	1	0	0	223
Washington	16	21	37	57	111	193	182	226	248	14	0	0	1105
Area 3 Total	62	55	107	211	331	585	723	836	995	57	4	4	3970
4. Caroline	9	5	15	20	37	47	64	102	111	8	0	0	418
Cecil	31	19	34	57	102	175	172	178	215	13	1	0	997
Dorchester	7	4	8	12	19	20	38	60	83	2	0	0	253
Kent	0	1	5	5	20	19	29	47	62	2	0	0	190
Queen Anne's	0	4	2	21	31	43	58	99	103	6	0	0	367
Somerset	3	3	0	6	8	14	13	33	39	2	0	0	121
Talbot	4	1	10	24	39	37	71	131	161	7	0	0	485
Wicomico	14	11	19	43	97	103	134	170	172	13	2	0	778
Worcester	5	4	4	14	39	110	174	293	485	12	0	0	1140
Area 4 Total	73	52	97	202	392	568	753	1113	1431	65	3	0	4749
5. Montgomery	17	18	27	55	104	186	320	434	584	78	5	1	1829
Area 5 Total	17	18	27	55	104	186	320	434	584	78	5	1	1829
6. Anne Arundel	46	54	102	133	310	525	841	970	1026	42	4	2	4055
Calvert	9	12	19	39	64	103	127	151	212	25	2	0	763
Charles	18	8	25	36	75	111	144	226	290	25	1	0	959
St. Mary's	10	4	9	22	44	84	112	188	196	7	0	0	676
Area 6 Total	83	78	155	230	493	823	1224	1535	1724	99	7	2	6453
7. Prince George's	6	5	6	15	34	80	143	163	184	37	1	1	675
Area 7 Total	6	5	6	15	34	80	143	163	184	37	1	1	675
State Total	368	324	576	1142	2138	3468	4820	6155	7114	593	37	36	26771

Table 14
Intake Cases by Age and County of Jurisdiction for Hispanic Youth
FY 1999

Area	<10	10	11	12	13	14	15	16	17	18	over 18	age/ unknown	Juris. Total
1. Baltimore City	0	0	0	1	2	7	3	3	8	0	0	0	24
Area 1 Total	0	0	0	1	2	7	3	3	8	0	0	1	25
2. Baltimore	2	0	0	0	3	1	3	9	2	1	0	0	21
Carroll	0	0	0	0	0	0	3	4	2	0	0	0	9
Harford	0	0	0	3	1	3	1	2	2	1	0	0	13
Howard	0	0	0	0	1	0	0	3	5	0	0	0	9
Area 2 Total	2	0	0	3	5	4	7	18	11	2	0	0	52
3. Allegany	0	0	0	0	0	0	0	0	0	0	0	0	0
Frederick	0	1	0	1	5	1	7	6	4	0	0	0	25
Garrett	0	0	0	0	0	0	0	0	0	0	0	0	0
Washington	3	0	0	0	2	2	2	2	1	0	0	0	12
Area 3 Total	3	1	0	1	7	3	9	8	5	0	0	0	37
4. Caroline	0	0	1	0	0	1	1	1	1	0	0	0	5
Cecil	1	0	0	0	4	0	2	0	10	0	0	0	17
Dorchester	0	0	0	0	2	1	1	1	0	0	0	0	5
Kent	0	0	0	0	0	0	0	0	0	0	0	0	0
Queen Anne's	0	1	0	0	1	0	2	0	0	0	0	0	4
Somerset	0	0	0	0	0	0	0	0	1	0	0	0	1
Talbot	0	0	0	0	0	0	0	0	1	0	0	0	1
Wicomico	0	0	0	0	1	3	1	0	1	1	0	0	7
Worcester	0	1	0	1	1	2	3	5	9	0	0	0	22
Area 4 Total	1	2	1	1	9	7	10	7	23	1	0	0	62
5. Montgomery	1	1	2	6	20	34	52	89	110	17	2	2	336
Area 5 Total	1	1	2	6	20	34	52	89	110	17	2	2	336
6. Anne Arundel	0	0	1	0	2	1	7	7	12	0	0	0	30
Calvert	0	0	0	0	1	2	0	0	2	0	0	0	5
Charles	1	0	0	0	0	0	0	4	1	0	0	0	6
St. Mary's	0	0	0	0	0	3	0	0	3	0	0	0	6
Area 6 Total	1	0	1	0	3	6	7	11	18	0	0	0	47
7. Prince George's	1	1	3	2	8	16	28	43	33	7	1	0	143
Area 7 Total	1	1	3	2	8	16	28	43	33	7	1	0	143
State Total	9	5	7	14	54	77	116	179	208	27	3	3	702

Table 15
Intake Cases by Age and County of Jurisdiction for Males
FY 1999

Area	< 9	10	11	12	13	14	15	16	17	18	Over 18	age / Unknown	Juris. Total
1. Baltimore City	194	198	285	524	851	1310	1804	2027	2189	372	22	28	9804
Area 1 Total	194	198	285	524	851	1310	1804	2027	2189	372	22	28	9804
2. Baltimore	105	122	184	292	524	779	1020	1115	1175	128	10	2	5456
Carroll	11	14	22	56	90	126	149	209	188	31	1	7	904
Harford	26	19	25	53	114	192	295	345	410	50	7	1	1537
Howard	18	17	32	62	58	116	194	286	319	35	2	1	1140
Area 2 Total	160	172	263	463	786	1213	1658	1955	2092	244	20	11	9037
3. Allegany	23	20	25	38	47	81	126	177	204	6	1	3	751
Frederick	23	19	37	86	134	228	294	313	376	28	3	0	1541
Garrett	1	1	6	9	9	21	25	37	54	1	1	0	165
Washington	18	21	40	52	86	162	162	190	242	11	0	2	986
Area 3 Total	65	61	108	185	276	492	607	717	876	46	5	5	3443
4. Caroline	19	12	20	31	45	48	78	87	101	11	0	0	452
Cecil	29	18	31	41	80	128	115	143	196	12	1	0	794
Dorchester	19	16	16	21	47	38	72	82	101	3	1	0	416
Kent	1	6	3	8	20	23	41	41	81	2	0	0	226
Queen Anne's	3	5	3	19	24	38	64	96	95	8	0	0	355
Somerset	6	6	7	6	21	24	23	46	44	2	0	0	185
Talbot	12	10	15	26	34	35	67	123	151	8	0	0	481
Wicomico	24	24	40	73	161	185	210	223	215	13	2	0	1170
Worcester	13	7	11	17	46	95	149	268	421	9	2	0	1038
Area 4 Total	126	104	146	242	478	614	819	1109	1405	68	6	0	5117
5. Montgomery	40	40	63	122	221	324	536	701	888	117	7	3	3062
Area 5 Total	40	40	63	122	221	324	536	701	888	117	7	3	3062
6. Anne Arundel	66	71	131	192	338	520	800	961	1041	49	5	3	4177
Calvert	10	13	20	43	60	83	104	129	193	21	1	0	677
Charles	36	20	45	71	94	129	144	266	312	36	2	0	1155
St. Mary's	13	11	18	38	43	89	141	177	192	8	0	0	730
Area 6 Total	125	115	214	344	535	821	1189	1533	1738	114	8	3	6739
7. Prince George's	52	56	96	171	353	553	817	1009	1198	168	6	6	4485
Area 7 Total	52	56	96	171	353	553	817	1009	1198	168	6	6	4485
State Total	762	746	1175	2051	3500	5327	7430	9051	10386	1129	74	56	41687

Table 16
Intake Cases by Age and County of Jurisdiction for Females
FY 1999

Area	< 9	10	11	12	13	14	15	16	17	18	Over 18	age / Unknown	Juris. Total
1. Baltimore City	31	37	69	179	293	346	444	423	361	65	5	31	2284
Area 1 Total	31	37	69	179	293	346	444	423	361	65	5	31	2284
Baltimore	22	23	38	126	223	346	441	449	401	30	1	2	2102
Carroll	5	3	7	18	37	60	93	77	77	1	0	3	381
Harford	3	4	7	16	48	95	119	124	117	13	1	1	548
Howard	2	3	1	10	26	48	82	113	111	15	2	0	413
Area 2 Total	32	33	53	170	334	549	735	763	706	59	4	6	3444
3. Allegany	3	6	6	28	41	56	75	61	97	6	0	2	381
Frederick	3	2	15	27	52	74	129	127	116	7	0	0	552
Garrett	2	1	0	3	10	15	12	5	13	0	1	0	62
Washington	6	5	10	18	39	66	56	81	59	6	0	0	346
Area 3 Total	14	14	31	76	142	211	272	274	285	19	1	2	1341
4. Caroline	2	0	10	13	14	14	22	43	37	3	0	0	158
Cecil	6	4	11	20	34	61	68	43	52	4	0	0	303
Dorchester	7	3	9	9	23	13	22	31	35	1	0	0	153
Kent	0	1	5	5	5	16	16	28	15	1	0	0	92
Queen Anne's	0	0	1	5	15	14	14	24	27	1	0	0	101
Somerset	4	1	1	6	6	11	13	18	27	1	0	0	88
Talbot	0	0	5	12	17	30	27	34	51	2	0	0	178
Wicomico	7	9	9	27	52	61	86	76	71	12	0	0	410
Worcester	0	1	1	12	17	51	72	86	123	4	0	0	367
Area 4 Total	26	19	52	109	183	271	340	383	438	29	0	0	1850
5. Montgomery	5	4	9	25	58	121	183	210	238	30	2	4	889
Area 4 Total	5	4	9	25	58	121	183	210	238	30	2	4	889
6. Anne Arundel	15	13	37	69	136	232	340	316	337	13	1	0	1509
Calvert	0	1	4	5	20	47	52	50	66	9	1	3	258
Charles	3	4	12	16	57	75	97	103	125	8	0	0	500
St. Mary's	5	0	2	4	17	40	47	77	77	3	0	0	272
Area 6 Total	23	18	55	94	230	394	536	546	605	33	2	3	2539
7. Prince George's	3	8	23	45	110	197	243	236	222	25	2	2	1116
Area 7 Total	3	8	23	45	110	197	243	236	222	25	2	2	1116
State Total	134	133	292	698	1350	2089	2753	2835	2855	260	16	48	13463

Table 17
Number & Percent of Total Intake Cases by Referral Source
FY 1999

Referral Source	FY 1999	Percent
Police	51736	93.8
Maryland State Agencies	1054	1.9
Citizen	1193	2.2
Parent/Relative	349	0.6
Court	223	0.4
Other	595	1.1
State Total	55150	100.0

Table 18
Intake Cases by Referral Source & County of Jurisdiction
FY 1999

Area	Police	Maryland State Agencies	Citizen	Parent / Relative	Court	Other	Juris. Total
1. Baltimore City	10943	510	467	17	22	129	12088
Area 1 Total	10943	510	467	17	22	129	12088
2. Baltimore	7504	3	0	2	0	49	7558
Carroll	1035	108	69	62	0	11	1285
Harford	1998	2	0	1	0	84	2085
Howard	1528	1	11	0	0	13	1553
Area 2 Total	12065	114	80	65	0	157	12481
3. Allegany	1086	0	20	23	1	2	1132
Frederick	1966	43	18	35	7	24	2093
Garrett	178	22	6	19	2	0	227
Washington	888	0	290	144	0	10	1332
Area 3 Total	4118	65	334	221	10	36	4784
4. Caroline	589	13	2	1	0	5	610
Cecil	1058	0	11	2	0	26	1097
Dorchester	518	0	49	0	0	2	569
Kent	309	3	0	0	0	6	318
Queen Anne's	434	17	2	1	2	0	456
Somerset	273	0	0	0	0	0	273
Talbot	640	0	3	2	11	3	659
Wicomico	1562	0	1	0	3	14	1580
Worcester	1395	3	0	1	0	6	1405
Area 4 Total	6778	36	68	7	16	62	6967
5. Montgomery	3756	0	0	29	133	33	3951
Area 5 Total	3756	0	0	29	133	33	3951
6. Anne Arundel	5604	60	1	2	4	15	5686
Calvert	922	0	8	0	0	5	935
Charles	1625	7	0	3	2	18	1655
St. Mary's	992	0	0	0	0	10	1002
Area 6 Total	9143	67	9	5	6	48	9278
7. Prince George's	4933	262	235	5	36	130	5601
Area 7 Total	4933	262	235	5	36	130	5601
State Total	51736	1054	1193	349	223	595	55150

Table 19
Intake Cases - Offense by Offense Type
FY 1997 - FY 1999

Offenses	FY 1997	Percent	FY 1998	Percent	FY 1999	Percent	Percent Change 98 to '99
Person - to Person Offenses							
aggravated assault	640	1.1	468	0.8	355	0.6	-24.1
child abuse	76	0.1	88	0.2	73	0.1	-17.0
kidnapping	9	0.0	8	0.0	7	0.0	-12.5
manslaughter	5	0.0	2	0.0	6	0.0	200.0
murder	81	0.1	53	0.1	60	0.1	13.2
robbery	794	1.4	702	1.3	649	1.2	-7.5
sex offense	595	1.0	617	1.1	595	1.1	-3.6
simple assault	10969	18.9	10899	19.6	11399	20.7	4.6
Total Person-to-Person	13169	22.7	12837	23.0	13144	23.8	2.4
Property Offenses							
arson felony/misd	372	0.6	350	0.6	386	0.7	10.3
auto theft/unauthorized use	3325	5.7	2636	4.7	2060	3.7	-21.9
burglary/breaking & entering	2994	5.2	2703	4.8	2512	4.6	-7.1
carjacking	40	0.1	22	0.0	23	0.0	0.0
malicious destruction	3728	6.4	3464	6.2	3358	6.1	-3.1
tampering	94	0.2	83	0.1	99	0.2	19.3
theft/shoplifting	10023	17.3	9089	16.3	8716	15.8	-4.1
trespassing	1422	2.5	1350	2.4	1522	2.8	12.7
Total Property	21998	37.9	19697	35.3	18676	33.9	-5.2
Alcohol & Drug Related Offenses							
alcohol violations	3112	5.4	3932	7.1	3626	6.6	-7.8
glue sniffing & other inhalants	54	0.1	30	0.1	30	0.1	0.0
narcotics distribution	3559	6.1	2689	4.8	2884	5.2	7.3
narcotics possession	5003	8.6	4902	8.8	4814	8.7	-1.8
Total - Alcohol & Drug related	11728	20.2	11553	20.7	11354	20.6	-1.7
CINS Offenses							
runaway	745	1.3	893	1.6	783	1.4	-12.3
truancy	246	0.4	346	0.6	322	0.6	-6.9
ungovernable	907	1.6	799	1.4	646	1.2	-19.1
Total - CINS	1898	3.3	2038	3.7	1751	3.2	-14.1
Uncategorized - Offenses							
carry or conceal a deadly weapon	1074	1.9	1169	2.1	1190	2.2	1.8
conspiracy	114	0.2	140	0.3	130	0.2	-7.1
disorderly conduct	1876	3.2	1741	3.1	1837	3.3	5.5
failure to obey law	307	0.5	193	0.3	193	0.3	0.0
false report	188	0.3	247	0.4	253	0.5	2.4
hand gun violations	290	0.5	266	0.5	230	0.4	-13.5
harrassment	258	0.4	223	0.4	191	0.3	-14.3
loitering	607	1.0	361	0.6	436	0.8	20.8
motor vehicle /traffic violations	1021	1.8	1011	1.8	1110	2.0	9.8
pager at school	564	1.0	95	0.2	67	0.1	-29.5
reckless endangerment	145	0.2	108	0.2	149	0.3	38.0
rogue & vagabond	102	0.2	75	0.1	64	0.1	-14.7
telephone misuse	177	0.3	194	0.3	176	0.3	-9.3
tobacco violations	1361	2.3	2626	4.7	2968	5.4	13.0
unspecified felony	201	0.3	182	0.3	198	0.4	8.8
unspecified/misdemeanors	947	1.6	976	1.8	1033	1.9	5.8
Total - Uncategorized	9232	15.9	9607	17.2	10225	18.5	6.4
State Total	58025	100.0	55732	100.0	55150	100.0	-1.0

Table 20a
Intake Cases by Alleged Offenses & County of Jurisdiction
FY 1999

Area	Aggravated Assault	Child Abuse	Kidnapping	manslaughter	Murder	Murder	Sex Offense	Simple Assault	Arson Felony/Misdemeanors	Auto Theft/Unauthorized Use	Breaking & Entering	Carjacking	Malicious Destruction	Tampering	Theft/Shoplifting	Trespassing
1. Baltimore City	288	9	0	2	40	115	151	2851	51	749	447	13	475	5	677	442
Area 1 Total	288	9	0	2	40	115	151	2851	51	749	447	13	475	5	677	442
2. Baltimore	47	23	4	0	1	142	52	1806	69	291	422	2	598	15	1837	235
Carroll	0	0	0	0	1	1	13	258	6	13	72	0	85	2	172	29
Harford	1	1	0	0	1	12	12	364	13	46	57	1	124	1	324	30
Howard	0	1	1	0	1	24	19	284	16	27	102	0	104	5	236	39
Area 2 Total	48	25	5	0	4	179	96	2712	104	377	653	3	911	23	2569	333
3. Allegany	4	2	0	0	0	6	10	210	15	14	21	0	56	8	151	5
Frederick	1	4	0	0	0	7	23	300	19	20	59	0	170	6	379	46
Garrett	0	0	0	0	0	0	2	31	0	5	12	0	12	0	27	5
Washington	0	2	0	0	1	7	10	261	16	18	41	0	67	1	276	12
Area 3 Total	5	8	0	0	1	20	45	802	50	57	133	0	305	15	833	68
4. Caroline	1	0	0	0	0	0	5	165	6	18	35	0	73	1	84	13
Cecil	0	1	0	1	0	1	10	255	6	34	54	0	122	2	180	16
Dorchester	0	0	0	0	0	4	5	162	6	5	31	0	32	0	81	9
Kent	0	0	0	0	0	0	2	56	0	6	18	0	31	1	34	6
Queen Anne's	0	0	0	0	0	0	1	76	4	2	15	0	39	0	30	20
Somerset	0	0	0	0	0	0	1	83	0	6	24	0	34	0	28	0
Talbot	1	0	0	0	0	1	5	119	15	6	14	0	62	0	79	38
Wicomico	3	1	0	0	0	10	31	494	19	61	64	0	79	0	277	27
Worcester	0	0	0	0	0	4	3	98	12	10	50	0	95	12	220	3
Area 4 Total	5	2	0	1	0	20	63	1508	68	148	305	0	567	16	1013	132
5. Montgomery	1	6	0	1	1	91	56	690	34	180	232	2	220	5	765	65
Area 5 Total	1	6	0	1	1	91	56	690	34	180	232	2	220	5	765	65
6. Anne Arundel	2	7	0	0	0	46	59	1154	28	108	235	0	335	29	940	145
Calvert	0	0	0	1	0	1	13	164	2	26	59	0	92	0	141	29
Charles	2	3	0	1	4	15	14	372	21	47	87	0	102	0	441	25
St.Mary's	0	0	0	0	0	0	12	210	12	19	57	0	73	0	137	14
Area 6 Total	4	10	0	2	4	62	98	1900	63	200	438	0	602	29	1659	213
Prince George's	4	13	2	0	10	162	86	936	16	349	304	5	278	6	1200	269
Area 7 Total	4	13	2	0	10	162	86	936	16	349	304	5	278	6	1200	269
State Total	355	73	7	6	60	649	595	11399	386	2060	2512	23	3358	99	8716	1522

Table 20b
Intake Cases by Alleged Offenses & County of Jurisdiction
 FY 1999

Area	Alcohol Violation	Glue Sniffing	Narcotics Distribution	Narcotics Possession	Runaway	Truant	Ungovernable	Caring / Concealing a Weapon	Disorderly Conduct	Failure to Obey Law	False Report	Handgun Violation	Harassment	Loitering	Motor Vehicle / Traffic Violation
1. Baltimore City	118	17	2166	1049	4	97	164	307	709	158	31	143	14	408	76
Area 1 Total	118	17	2166	1049	4	97	164	307	709	158	31	143	14	408	76
Baltimore	240	4	99	751	0	3	15	114	173	4	34	18	32	13	105
Carroll	108	0	7	131	66	35	34	17	30	1	7	0	32	0	41
Harford	101	0	31	230	1	2	1	37	31	0	17	5	4	0	37
Howard	254	0	26	156	29	0	3	30	32	0	6	1	1	0	63
Area 2 Total	703	4	163	1268	96	40	53	198	266	5	64	24	69	13	246
3. Allegany	266	6	9	65	66	14	17	14	26	0	1	0	4	0	29
Frederick	183	0	47	122	85	42	32	36	79	0	10	1	3	0	55
Garrett	34	0	1	25	0	23	16	0	3	0	1	0	2	0	8
Washington	157	0	29	62	7	15	112	24	20	0	3	4	34	0	48
Area 3 Total	640	6	86	274	158	94	177	74	128	0	15	5	43	0	140
4. Caroline	52	0	3	24	42	3	0	7	23	3	3	0	1	4	14
Cecil	87	1	16	78	30	1	3	25	32	1	1	0	0	0	28
Dorchester	41	0	7	51	24	2	0	4	63	0	0	3	7	0	11
Kent	22	0	0	19	5	2	0	2	35	0	3	1	0	0	5
Queen Anne's	36	0	12	74	53	2	1	0	20	0	6	0	3	0	6
Somerset	34	0	1	14	13	0	0	3	5	1	3	2	1	0	6
Talbot	125	0	9	35	41	0	0	8	16	0	1	0	2	0	10
Wicomico	96	0	27	64	46	2	0	28	25	0	9	1	14	0	25
Worcester	288	0	11	202	68	3	3	17	67	7	3	1	1	0	37
Area 4 Total	781	1	86	561	322	15	7	94	286	12	29	8	29	4	142
5. Montgomery	507	0	48	336	6	0	41	136	60	5	19	2	2	0	218
Area 5 Total	507	0	48	336	6	0	41	136	60	5	19	2	2	0	218
6. Anne Arundel	326	1	74	519	1	61	4	94	137	2	46	13	22	1	137
Calvert	88	0	15	94	92	2	0	10	34	0	11	1	2	0	21
Charles	204	0	15	108	5	3	5	22	29	1	10	4	2	0	42
St.Mary's	147	0	4	74	69	0	0	11	33	0	8	1	2	0	27
Area 6 Total	765	1	108	795	167	66	9	137	233	3	75	19	28	1	227
7. Prince George's	112	1	227	531	30	10	195	244	155	10	20	29	6	10	61
Area 7 Total	112	1	227	531	30	10	195	244	155	10	20	29	6	10	61
State Total	3626	30	2884	4814	783	322	646	1190	1837	193	253	230	191	436	1110

Table 20c
Intake Cases by Alleged Offenses & County of Jurisdiction
FY 1999

Area	Pager at School	Reckless Endangerment	Rogue & Vagabond	Telephone Misuse	Tobacco Violation	Unspecified Felony	Unspecified Misdemeanor / other	Juris. Total
1. Baltimore City	1	16	38	4	1	13	239	12088
Area 1 Total	1	16	38	4	1	13	239	12088
Baltimore	7	18	1	54	205	34	90	7558
Carroll	0	3	1	10	54	13	43	1285
Harford	2	5	0	7	478	7	102	2085
Howard	7	7	2	3	57	4	13	1553
Area 2 Total	16	33	4	74	794	58	248	12481
3. Allegany	2	4	0	4	68	4	31	1132
Frederick	6	13	0	6	298	6	35	2093
Garrett	0	1	0	0	1	4	14	227
Washington	0	8	0	2	35	14	46	1332
Area 3 Total	8	26	0	12	402	28	126	4784
4. Caroline	0	4	0	4	8	0	14	610
Cecil	1	3	0	10	65	3	30	1097
Dorchester	0	1	0	3	7	5	5	569
Kent	0	0	0	3	50	3	14	318
Queen Anne's	0	1	0	3	23	0	29	456
Somerset	0	2	0	1	4	2	5	273
Talbot	3	12	0	3	34	1	19	659
Wicomico	4	2	0	3	128	11	29	1580
Worcester	0	3	0	2	126	9	50	1405
Area 4 Total	8	28	0	32	445	34	195	6967
5. Montgomery	10	4	1	19	85	13	90	3951
Area 5 Total	10	4	1	19	85	13	90	3951
6. Anne Arundel	6	18	1	14	1032	18	71	5686
Calvert	0	10	0	3	7	4	13	935
Charles	3	2	2	7	41	6	10	1655
St.Mary's	0	5	7	6	60	2	12	1002
Area 6 Total	9	35	10	30	1140	30	106	9278
7. Prince George's	15	7	11	5	101	22	159	5601
Area 7 Total	15	7	11	5	101	22	159	5601
State Total	67	149	64	176	2968	198	1163	55150

Table 21a
Intake Cases by Alleged Offenses & County of Residence
FY 1999

Area	AggravateAssault	Child Abuse	Kidnapping	Manslaughter	Murder	Robbery	Sex Offense	Simple Assault	Arson Felony/Misdemeanors	Auto Theft/Unauthorized Use	Breaking & Entering	Carjacking	Malicious Destruction	Tampering	Theft/Shoplifting	Trespassing
1. Baltimore City	275	10	2		37	150	156	2895	56	764	483		523		1543	461
Area 1 Total	275	10	2	2	37	150	156	2895	56	764	483	13	523	7	1543	461
2. Baltimore	52	22	2	0	2	114	53	1768	63	247	383	2	554	9	1098	218
Carroll	0	0	0	0	1	0	12	256	9	15	67	0	87	3	186	28
Harford	1	0	0	0	1	10	14	364	15	43	64	1	131	4	352	28
Howard	1	1	1	0	1	14	14	267	15	30	96	0	101	5	200	33
Area 2 Total	54	23	3	0	5	138	93	2655	102	335	610	3	873	21	1836	307
3. Allegany	4	2	0	0	0	5	10	195	15	11	23	0	53	8	145	5
Frederick	0	4	0	0	0	8	20	299	18	22	61	0	167	6	350	45
Garrett	0	0	0	0	0	0	1	28	0	5	9	0	13	0	24	5
Washington	0	2	0	0	0	7	9	248	13	20	37	0	65	1	235	13
Area 3 Total	4	8	0	0	0	20	40	770	46	58	130	0	298	15	754	68
4. Caroline	2	0	0	0	0	0	2	168	7	18	33	0	68	1	92	16
Cecil	0	0	0	1	0	0	8	250	6	29	49	0	119	2	186	16
Dorchester	0	0	0	0	0	5	5	152	4	3	29	0	32	0	95	10
Kent	0	0	0	0	0	0	2	35	0	5	15	0	32	1	26	8
Queen Anne's	0	0	0	0	0	0	4	93	4	3	16	0	39	0	35	18
Somerset	0	0	0	0	0	0	1	85	1	8	23	0	35	0	37	0
Talbot	1	1	0	0	0	1	7	109	12	5	14	0	59	0	66	33
Wicomico	3	1	0	0	0	9	31	478	20	57	67	0	73	1	232	22
Worcester	0	0	0	0	0	2	3	88	12	3	38	0	63	11	96	1
Area 4 Total	6	2	0	1	0	17	63	1458	66	131	284	0	520	16	865	124
5. Montgomery	2	6	0	1	1	83	50	661	34	164	226	0	220	5	648	65
Area 5 Total	2	6	0	1	1	83	50	661	34	164	226	0	220	5	648	65
6. Anne Arundel	4	7	0	0	2	39	55	1157	26	116	228	0	331	29	755	147
Calvert	0	0	0	1	0	1	13	158	2	23	58	0	93	0	151	26
Charles	2	2	0	0	4	17	12	375	21	41	88	0	99	0	365	26
St.Mary's	0	0	0	1	0	0	12	215	12	17	55	0	70	0	153	14
Area 6 Total	6	9	0	2	6	57	92	1905	61	197	429	0	593	29	1424	213
7. Prince George's	5	9	2	0	10	151	77	837	18	284	275	3	246	5	1032	230
Area 7 Total	5	9	2	0	10	151	77	837	18	284	275	3	246	5	1032	230
Out-of-State	1	4	0	0	0	20	3	96	3	102	51	4	60	1	462	28
County Unknown	2	2	0	0	1	13	21	122	0	25	24	0	25	0	152	26
State Total	355	73	7	4	60	649	595	11399	386	2060	2512	10	3358	92	8716	1522

Table 21b
Intake Cases by Alleged Offenses & County of Residence
FY 1999

Area	Alcohol Violation	Glue Sniffing	Narcotics Distribution	Narcotics Possession	Runaway	Truant	Ungovernable	Carring / Concealing a Weapon	Disorderly Conduct	Failure to Obey Law	False Report	Handgun Violation	Harassment	Loitering	Motor Vehicle / Traffic Violation
1. Baltimore City	150	14	2046	1109	20	92	157	302	703	150	39	141	15	370	87
Area 1 Total	150	14	2046	1109	20	92	157	302	703	150	39	141	15	370	87
Baltimore	266	5	177	698	19	7	22	112	178	9	32	16	31	42	94
Carroll	115	0	8	139	69	35	33	19	33	1	7	0	31	0	45
Harford	113	0	35	233	4	1	1	36	35	0	16	5	3	2	39
Howard	182	0	28	140	21	0	6	34	34	0	5	2	1	0	59
Area 2 Total	676	5	248	1210	113	43	62	201	280	10	60	23	66	44	237
3. Allegany	235	6	8	63	58	14	16	14	27	0	1	0	4	0	26
Frederick	176	0	40	115	79	40	33	32	74	0	11	1	5	0	50
Garrett	30	0	3	21	1	23	14	1	1	0	1	0	2	0	7
Washington	131	0	13	58	5	14	106	25	19	0	3	4	32	0	46
Area 3 Total	572	6	64	257	143	91	169	72	121	0	16	5	43	0	129
4. Caroline	55	0	4	29	41	2	0	8	26	3	3	0	2	4	12
Cecil	82	1	16	70	26	0	3	25	31	1	1	1	0	0	23
Dorchester	45	0	5	37	12	3	0	6	59	0	0	3	6	0	10
Kent	15	0	1	13	6	2	0	2	35	0	3	0	0	0	3
Queen Anne's	39	0	10	74	51	2	1	1	19	0	5	0	3	0	6
Somerset	29	0	2	13	12	0	0	3	6	1	3	3	1	0	7
Talbot	102	0	7	26	44	0	1	7	17	0	2	0	2	0	10
Wicomico	109	0	24	61	38	2	0	27	25	0	9	1	14	0	28
Worcester	55	0	6	46	29	30	3	5	24	1	1	0	1	0	13
Area 4 Total	531	1	75	369	259	41	8	84	242	6	27	8	29	4	112
5. Montgomery	433	0	53	318	16	0	41	132	63	3	18	2	2	1	209
Area 5 Total	433	0	53	318	16	0	41	132	63	3	18	2	2	1	209
6. Anne Arundel	358	3	91	531	15	63	5	96	134	3	40	15	22	4	143
Calvert	99	0	14	88	82	2	0	10	33	0	10	2	2	0	17
Charles	202	0	17	121	11	4	10	21	34	1	10	2	2	0	42
St.Mary's	135	0	5	72	39	0	0	11	33	0	9	1	2	0	30
Area 6 Total	794	3	127	812	147	69	15	138	234	4	69	20	28	4	232
7. Prince George's	131	1	195	456	25	7	164	207	140	9	20	30	5	8	55
Area 7 Total	131	1	195	456	25	7	164	207	140	9	20	30	5	8	55
Out-ofState	295	0	50	217	50	4	14	26	32	9	3	1	1	0	37
County Unknown	44	0	26	66	10	2	16	28	22	2	1	0	2	5	12
State Total	3626	30	2884	4814	783	349	646	1190	1837	193	253	230	191	436	1110

Table 21c
Intake Cases by Alleged Offenses & County of Residence
FY 1999

Area	Pager at School	Reckless Endangerment	Rogue & Vagabond	Telephone Misuse	Tobacco Violation	Unspecified Felony	Unspecified Misdemeanor / other	
1. Baltimore City	2	24	31	9	31	30	239	13138
Area 1 Total	2	24	31	9	31	30	239	13138
Baltimore	6	12	7	50	234	28	100	6732
Carroll	0	3	1	4	55	6	39	1307
Harford	2	4	0	8	465	7	95	2132
Howard	7	8	2	2	54	3	12	1379
Area 2 Total	15	27	10	64	808	44	246	11550
3. Allegany	2	4	0	3	60	2	30	1049
Frederick	6	13	0	7	292	5	35	2014
Garrett	0	1	0	1	1	4	11	207
Washington	0	8	0	1	45	10	41	1211
Area 3 Total	8	26	0	12	398	21	117	4481
4. Caroline	0	4	0	3	12	1	13	629
Cecil	1	3	0	10	63	3	29	1055
Dorchester	0	1	0	6	9	3	5	24
Kent	0	0	0	3	24	2	14	247
Queen Anne's	0	0	0	2	50	0	27	502
Somerset	0	2	0	1	5	2	6	286
Talbot	3	12	0	2	31	1	19	594
Wicomico	4	2	0	3	118	9	30	1498
Worcester	0	3	0	3	63	9	14	596
Area 4 Total	8	27	0	33	375	30	157	5952
5. Montgomery	9	4	2	21	85	14	87	3679
Area 5 Total	9	4	2	21	85	14	87	3679
6. Anne Arundel	6	14	0	17	920	17	78	5471
Calvert	0	10	0	1	20	3	13	932
Charles	3	2	3	8	49	4	14	1612
St.Mary's	0	5	6	5	57	2	12	973
Area 6 Total	9	31	9	31	1046	26	117	8988
7. Prince George's	15	8	6	4	113	25	121	4929
Area 7 Total	15	8	6	4	113	25	121	4929
Out-ofState	0	2	5	1	93	6	49	1730
County Unknown	1	0	1	1	19	2	30	703
State Total	67	149	64	176	2968	198	1163	55150

**Table 22a
Intake Cases by Alleged Offenses & County of Offense
FY 1999**

Area	Aggravated Assault	Child Abuse	Kidnapping	manslaughter	Murder	Robbery	Sex Offense	Simple Assault	Arson Felony/Misdemeanors	Auto Theft/Unauthorized Use	Breaking & Entering	Carjacking	Malicious Destruction	Tampering	Theft/Shoplifting	Trespassing
1. Baltimore City	287	9	0	2	40	113	151	2846	51	748	445	13	474	5	674	442
Area 1 Total	287	9	0	2	40	113	151	2846	51	748	445	13	474	5	674	442
2. Baltimore	46	23	4	0	1	143	52	1802	69	286	422	2	598	15	1832	233
Carroll	0	0	0	0	1	1	13	258	6	13	71	0	85	2	172	29
Harford	1	1	0	0	1	11	12	368	13	48	57	1	124	1	323	30
Howard	0	1	0	0	1	24	18	278	16	24	102	0	104	5	234	38
Area 2 Total	47	25	4	0	4	179	95	2706	104	371	652	3	911	23	2561	330
3. Allegany	4	2	0	0	0	6	10	212	15	13	22	0	56	8	153	5
Frederick	1	4	0	0	0	7	22	302	19	20	58	0	170	6	378	45
Garrett	0	0	0	0	0	0	2	31	0	5	11	0	12	0	27	5
Washington	0	2	0	0	1	6	10	258	16	18	42	0	67	1	272	12
Area 3 Total	5	8	0	0	1	19	44	803	50	56	133	0	305	15	830	67
4. Caroline	1	0	0	0	0	0	5	164	8	19	35	0	73	1	83	12
Cecil	0	1	0	1	0	1	9	252	6	34	51	0	122	2	174	14
Dorchester	0	0	0	0	0	4	5	161	6	5	31	0	32	0	81	9
Kent	0	0	0	0	0	0	2	56	0	5	18	0	32	1	34	6
Queen Anne's	0	0	0	0	0	0	1	76	4	2	15	0	39	0	29	20
Somerset	0	0	0	0	0	0	2	83	0	6	24	0	34	0	28	0
Talbot	1	0	0	0	0	1	5	125	15	6	15	0	64	0	80	42
Wicomico	3	1	0	0	0	10	29	486	17	59	61	0	77	0	272	22
Worcester	0	0	0	0	0	4	3	98	12	9	50	0	94	12	219	2
Area 4 Total	5	2	0	1	0	20	61	1501	68	145	300	0	567	16	1000	127
5. Montgomery	0	6	0	1	1	91	56	685	34	178	232	2	216	5	749	66
Area 5 Total	0	6	0	1	1	91	56	685	34	178	232	2	216	5	749	66
6. Anne Arundel	2	7	0	0	0	46	58	1152	28	108	235	0	335	29	936	145
Calvert	0	0	0	1	0	1	13	164	2	26	59	0	92	0	140	29
Charles	1	3	0	1	4	15	14	371	21	47	87	0	102	0	441	24
St.Mary's	0	0	0	0	0	1	12	210	11	18	57	0	72	0	133	14
Area 6 Total	3	10	0	2	4	63	97	1897	62	199	438	0	601	29	1650	212
7. Prince George's	2	13	2	0	10	157	83	923	16	339	300	5	277	6	1179	268
Area 7 Total	2	13	2	0	10	157	83	923	16	339	300	5	277	6	1179	268
Out-of-State	6	0	1	0	0	7	8	38	1	24	12	0	7	0	73	10
State Total	355	73	7	6	60	649	595	11399	386	2060	2512	23	3358	99	8716	1522

Table22b

**Intake Cases by Alleged Offenses & County of Offense
FY 1999**

Area	Alcohol Violation	Glue Sniffing	Narcotics Distribution	Narcotics Possession	Runaway	Truant	Ungovernable Carring / Conceling a Weapon	Disorderly Conduct	Failure to Obey Law	False Report	Handgun Violation	Harassment	Loitering	Motor Vehicle / Traffic Violation	
1. Baltimore City	114	17	2166	1047	4	97	164	307	709	158	31	142	14	408	77
Area 1 Total	114	17	2166	1047	4	97	164	307	709	158	31	142	14	408	77
2. Baltimore	212	4	99	750	0	3	15	114	174	2	34	17	32	13	104
Carroll	108	0	7	131	66	35	34	17	30	1	7	0	32	0	41
Harford	100	0	31	231	1	2	1	36	31	0	17	5	4	0	40
Howard	249	0	25	155	29	0	2	29	32	0	6	1	1	0	60
Area 2 Total	669	4	162	1267	96	40	52	196	267	3	64	23	69	13	245
3. Allegany	266	6	10	64	66	14	17	14	27	0	1	0	4	0	29
Frederick	171	0	47	119	84	42	32	35	79	0	10	1	3	0	55
Garrett	34	0	2	25	0	23	16	0	2	0	1	0	2	0	8
Washington	155	0	27	60	7	15	112	24	20	0	3	4	34	0	47
Area 3 Total	626	6	86	268	157	94	177	73	128	0	15	5	43	0	139
4. Caroline	51	0	3	25	42	3	0	7	26	3	3	0	1	4	14
Cecil	84	1	16	77	30	1	3	24	31	1	1	0	0	0	26
Dorchester	40	0	7	51	24	2	0	4	62	0	0	3	7	0	11
Kent	22	0	0	19	5	2	0	2	34	0	3	1	0	0	5
Queen Anne's	36	0	12	74	53	2	1	0	21	0	6	0	3	0	6
Somerset	34	0	1	14	13	0	0	3	6	1	3	2	1	0	6
Talbot	130	0	9	35	43	0	0	9	16	0	1	0	2	0	10
Wicomico	92	0	27	64	43	2	0	27	22	0	9	1	14	0	25
Worcester	401	0	11	201	68	3	3	17	67	7	3	1	1	0	37
Area 4 Total	890	1	86	560	321	15	7	93	285	12	29	8	29	4	140
5. Montgomery	461	0	46	331	6	0	41	135	57	5	18	2	2	0	217
Area 5 Total	461	0	46	331	6	0	41	135	57	5	18	2	2	0	217
6. Anne Arundel	315	1	73	517	2	61	4	93	136	2	45	13	22	1	137
Calvert	85	0	14	92	92	2	0	9	34	0	11	1	2	0	21
Charles	201	0	15	107	5	3	5	22	29	1	10	4	2	0	42
St.Mary's	141	0	4	74	69	0	0	11	33	0	8	1	2	0	27
Area 6 Total	742	1	106	790	168	66	9	135	232	3	74	19	28	1	227
7. Prince George's	114	1	220	521	29	9	194	241	152	3	19	25	6	10	61
Area 7 Total	114	1	220	521	29	9	194	241	152	3	19	25	6	10	61
Out-of-State	10	0	12	30	2	1	2	10	7	9	3	6	0	0	4
state total	3626	30	2884	4814	783	322	646	1190	1837	193	253	230	191	436	1110

**Table 22c
Intake Cases by Alleged Offenses & County of Offense
FY 1999**

Area	Pager at School	Reckless Endangerment	Rogue & Vagabond	Telephone Misuse	Tobacco Violation	Unspecified Felony	Unspecified Misdemeanor / other	County of Offense Total
1. Baltimore City	1	15	38	3	1	12	239	12064
Area 1 Total	1	15	38	3	1	12	239	12064
2. Baltimore	7	19	1	54	195	32	89	7498
Carroll	0	3	1	10	54	13	43	1284
Harford	2	4	0	7	478	7	104	2092
Howard	7	7	2	3	50	4	11	1518
Area 2 Total	16	33	4	74	777	56	247	12392
3. Allegany	2	4	0	4	68	4	31	1137
Frederick	6	13	0	6	298	6	34	2073
Garrett	0	1	0	0	1	4	14	226
Washington	0	8	0	2	35	14	45	1317
Area 3 Total	8	26	0	12	402	28	124	4753
4. Caroline	0	4	0	4	9	0	14	614
Cecil	1	3	0	10	63	3	27	1069
Dorchester	0	1	0	3	7	5	5	566
Kent	0	0	0	3	50	3	11	314
Queen Anne's	0	1	0	3	23	0	29	456
Somerset	0	2	0	1	5	2	5	276
Talbot	3	12	0	3	34	1	19	681
Wicomico	4	1	0	3	128	11	29	1539
Worcester	0	3	0	2	154	9	48	216
Area 4 Total	8	27	0	32	473	34	187	7054
5. Montgomery	10	4	1	19	77	12	88	3854
Area 5 Total	10	4	1	19	77	12	88	3854
6. Anne Arundel	6	18	1	15	1030	17	70	5660
Calvert	0	10	0	3	7	5	13	928
Charles	3	2	2	7	41	6	7	1645
St.Mary's	0	5	7	6	60	2	10	988
Area 6 Total	9	35	10	31	1138	30	100	9221
7. Prince George's	15	7	11	5	100	19	154	5496
Area 7 Total	15	7	11	5	100	19	154	5496
Out-of State	0	2	0	0	0	7	24	316
state total	67	149	64	176	2968	198	1163	55150

Table 23a
Intake Cases by Alleged Offenses and County of Jurisdiction for African-American Youth
FY 1999

Area	Aggravated Assault	Child Abuse	Kidnapping	manslaughter	Murder	Robbery	Sex Offense	Simple Assault	Felony/Misdemeanor	Auto Theft/Unauthorized Use	Breaking & Entering	Carjacking	Malicious Destruction	Tampering	Theft/Shoplifting	Trespassing
1. Baltimore City	268	6	0	1	40	107	136	2480	37	651	332	13	376	3	563	390
Area 1 Total	268	6	0	1	40	107	136	2480	37	651	332	13	376	3	563	390
2. Baltimore	22	12	3	0	0	108	26	878	4	170	179	2	199	5	1167	111
Carroll	0	0	0	0	0	1	1	17	0	2	4	0	9	0	5	6
Harford	1	0	0	0	1	5	3	113	2	15	6	1	24	0	107	12
Howard	0	0	1	0	0	20	4	144	5	11	46	0	28	0	103	13
Area 2 Total	23	12	4	0	1	134	34	1152	11	198	235	3	260	5	1382	142
3. Allegany	1	0	0	0	0	1	0	27	3	2	2	0	5	1	12	0
Frederick	0	0	0	0	0	4	7	98	2	6	11	0	27	2	80	17
Garrett	0	0	0	0	0	0	1	1	0	0	0	0	0	0	1	0
Washington	0	0	0	0	1	1	2	36	0	4	6	0	2	0	28	1
Area 3 Total	1	0	0	0	1	6	10	162	5	12	19	0	34	3	121	18
4. Caroline	1	0	0	0	0	0	0	70	3	3	10	0	14	0	35	3
Cecil	0	1	0	0	0	0	3	25	1	4	1	0	4	0	15	1
Dorchester	0	0	0	0	0	4	3	99	0	2	11	0	18	0	57	8
Kent	0	0	0	0	0	0	2	27	0	2	5	0	11	1	19	2
Queen Anne's	0	0	0	0	0	0	0	26	0	1	2	0	7	0	9	1
Somerset	0	0	0	0	0	0	1	59	0	2	17	0	17	0	19	0
Talbot	0	0	0	0	0	1	2	52	2	3	1	0	20	0	28	2
Wicomico	3	0	0	0	0	10	12	300	10	48	27	0	33	0	140	8
Worcester	0	0	0	0	0	0	2	45	1	4	18	0	18	0	51	0
Area 4 Total	4	1	0	0	0	15	25	703	17	69	92	0	142	1	373	25
5. Montgomery	1	0	0	0	0	66	24	376	11	83	105	2	67	2	406	24
Area 5 Total	1	0	0	0	0	66	24	376	11	83	105	2	67	2	406	24
6. Anne Arundel	0	3	0	0	0	30	32	451	4	32	67	0	87	17	366	34
Calvert	0	1	0	0	0	0	6	44	0	2	6	0	12	0	23	9
Charles	1	0	0	0	0	14	6	204	8	22	36	0	22	0	216	9
St.Mary's	0	0	0	0	0	0	4	86	2	6	13	0	23	0	35	8
Area 6 Total	1	4	0	0	0	44	48	785	14	62	122	0	144	17	640	60
7. Prince George's	3	13	2	0	10	152	75	813	15	301	252	4	206	4	995	227
Area 7 Total	3	13	2	0	10	152	75	813	15	301	252	4	206	4	995	227
State Total	301	36	6	1	52	524	352	6471	110	1376	1157	22	1229	35	4480	886

Table 23b
Intake Cases by Alleged Offenses and County of Jurisdiction for African-American Youth
FY 1999

Area	Alcohol Violation	Glue Sniffing	Narcotics Distribution	Narcotics Possession	Runaway	Truant	Ungovernable	Carrying / Concealing a Weapon	Disorderly Conduct	Failure to Obey Law	False Report	Handgun Violation	Harassment	Loitering	Motor Vehicle / Traffic Violation
1. Baltimore City	64	3	2043	898	3	71	146	276	645	148	30	140	8	371	67
Area 1 Total	64	3	2043	898	3	71	146	276	645	148	30	140	8	371	67
2. Baltimore	34	0	62	251	0	1	4	43	88	1	21	11	13	11	36
Carroll	3	0	1	6	6	2	2	3	3	0	1	0	1	0	1
Harford	6	0	26	42	0	1	0	10	9	0	2	3	0	0	10
Howard	16	0	14	33	9	0	1	11	12	0	2	1	1	0	6
Area 2 Total	59	0	103	332	15	4	7	67	112	1	26	15	15	11	53
3. Allegany	18	0	1	1	4	2	3	0	2	0	0	0	1	0	0
Frederick	12	0	26	19	25	6	8	7	23	0	1	0	1	0	14
Garrett	0	0	0	0	0	0	1	0	0	0	0	0	0	0	0
Washington	14	0	19	6	3	2	13	3	2	0	1	0	3	0	8
Area 3 Total	44	0	46	26	32	10	25	10	27	0	2	0	5	0	22
4. Caroline	4	0	0	4	6	2	0	2	11	3	1	0	0	4	3
Cecil	2	0	2	6	0	0	0	1	5	0	0	0	0	0	1
Dorchester	6	0	6	15	14	0	0	4	43	0	0	2	4	0	6
Kent	5	0	0	5	3	0	0	1	27	0	2	0	0	0	0
Queen Anne's	2	0	6	12	5	0	1	0	7	0	0	0	0	0	0
Somerset	2	0	1	5	7	0	0	2	3	1	2	1	0	0	4
Talbot	6	0	3	5	16	0	0	4	7	0	0	0	0	0	1
Wicomico	12	0	17	22	20	2	0	12	18	0	3	1	4	0	7
Worcester	13	0	4	15	8	1	2	3	15	2	0	0	0	0	5
Area 4 Total	52	0	39	89	79	5	3	29	136	6	8	4	8	4	27
5. Montgomery	82	0	21	151	4	0	16	57	40	4	3	0	1	0	45
Area 5 Total	82	0	21	151	4	0	16	57	40	4	3	0	1	0	45
6. Anne Arundel	23	0	33	117	0	13	0	28	47	1	10	4	4	0	25
Calvert	11	0	5	14	14	0	0	2	6	0	4	0	0	0	0
Charles	26	0	11	38	2	2	3	11	10	0	4	3	1	0	10
St.Mary's	27	0	4	23	23	0	0	2	16	0	1	1	2	0	8
Area 6 Total	87	0	53	192	39	15	3	43	79	1	19	8	7	0	43
7. Prince George's	50	1	200	418	22	10	159	212	135	10	19	27	6	10	44
Area 7 Total	50	1	200	418	22	10	159	212	135	10	19	27	6	10	44
state total	438	4	2505	2106	194	115	359	694	1174	170	107	194	50	396	301

Table 23c
Intake Cases by Alleged Offenses and County of Jurisdiction for African-American Youth
FY 1999

Area	Pager at School	Reckless Endangerment	Rogue & Vagabond	Telephone Misuse	Tobacco Violation	Unspecified Felony	Unspecified Misdemeanor / other	Juris. Total
1. Baltimore City	1	12	34	3	1	11	219	10597
Area 1 Total	1	12	34	3	1	11	219	10597
2. Baltimore	5	7	0	17	24	11	38	3564
Carroll	0	0	0	2	1	6	1	84
Harford	0	3	0	0	46	1	39	488
Howard	6	0	2	0	4	2	4	499
Area 2 Total	11	10	2	19	75	20	82	4635
3. Allegany	0	0	0	0	2	0	3	91
Frederick	2	2	0	0	28	3	9	440
Garrett	0	0	0	0	0	0	0	4
Washington	0	3	0	0	3	6	11	178
Area 3 Total	2	5	0	0	33	9	23	713
4. Caroline	0	0	0	2	1	0	4	186
Cecil	0	0	0	0	1	0	2	75
Dorchester	0	1	0	2	3	1	1	310
Kent	0	0	0	3	5	0	8	128
Queen Anne's	0	1	0	0	0	0	5	85
Somerset	0	2	0	1	1	0	4	151
Talbot	1	4	0	2	3	0	6	169
Wicomico	3	2	0	1	45	5	14	779
Worcester	0	0	0	2	9	5	5	228
Area 4 Total	4	10	0	13	68	11	49	2111
5. Montgomery	8	1	0	3	15	6	27	1651
Area 5 Total	8	1	0	3	15	6	27	1651
6. Anne Arundel	4	2	0	1	64	8	24	1531
Calvert	0	5	0	0	1	0	2	167
Charles	1	2	1	3	12	2	3	683
St.Mary's	0	2	2	3	5	0	3	299
Area 6 Total	5	11	3	7	82	10	32	2680
7. Prince George's	10	5	8	4	69	20	134	4645
Area 7 Total	10	5	8	4	69	20	134	4645
state total	41	54	47	49	343	87	566	27032

Table 24a
 Intake Cases by Alleged Offenses and County of Jurisdiction for Caucasian Youth
 FY 1999

Area	Aggravated Assault	Child Abuse	Kidnapping	manslaughter	Murder	Robbery	Sex Offense	Simple Assault	Arson Felony/Misdemeanors	Auto Theft/Unauthorized Use	Breaking & Entering	Carjacking	Malicious Destruction	Tampering	Theft/Shoplifting	Trespassing
1. Baltimore City	15	3	0	1	0	8	15	360	13	95	113	0	97	2	107	52
Area 1 Total	15	3	0	1	0	8	15	360	13	95	113	0	97	2	107	52
2. Baltimore	23	8	1	0	1	33	24	913	65	117	242	0	393	9	643	122
Carroll	0	0	0	0	1	0	12	237	6	10	68	0	76	2	166	22
Harford	0	1	0	0	0	7	9	247	9	30	50	0	100	1	214	17
Howard	0	1	0	0	1	4	15	129	8	15	52	0	72	5	117	25
Area 2 Total	23	10	1	0	3	44	60	1526	88	172	412	0	641	17	1140	186
3. Allegany	3	2	0	0	0	5	10	183	12	12	19	0	50	7	139	5
Frederick	1	4	0	0	0	3	16	191	17	14	48	0	139	4	281	28
Garrett	0	0	0	0	0	0	1	30	0	5	12	0	12	0	26	5
Washington	0	2	0	0	0	6	8	211	16	13	34	0	62	1	234	11
Area 3 Total	4	8	0	0	0	14	35	615	45	44	113	0	263	12	680	49
4. Caroline	0	0	0	0	0	0	5	92	3	15	25	0	58	1	47	10
Cecil	0	0	0	1	0	1	7	225	5	28	50	0	117	2	159	15
Dorchester	0	0	0	0	0	0	2	60	6	3	20	0	13	0	22	1
Kent	0	0	0	0	0	0	0	29	0	4	13	0	20	0	15	4
Queen Anne's	0	0	0	0	0	0	1	50	4	1	13	0	32	0	21	19
Somerset	0	0	0	0	0	0	0	23	0	4	7	0	17	0	9	0
Talbot	1	0	0	0	0	0	3	67	13	3	13	0	42	0	49	36
Wicomico	0	1	0	0	0	0	19	184	9	13	36	0	46	0	135	19
Worcester	0	0	0	0	0	4	0	51	10	6	30	0	77	12	163	3
Area 4 Total	1	1	0	1	0	5	37	781	50	77	207	0	422	15	620	107
5. Montgomery	0	5	0	1	1	18	22	239	17	72	100	0	134	3	267	29
Area 5 Total	0	5	0	1	1	18	22	239	17	72	100	0	134	3	267	29
6. Anne Arundel	2	4	0	0	0	16	27	683	24	73	166	0	242	12	552	111
Calvert	0	0	0	1	0	1	7	120	2	24	53	0	78	0	118	20
Charles	0	2	0	1	4	1	8	165	13	25	51	0	79	0	219	16
St.Mary's	0	0	0	0	0	0	7	122	9	11	43	0	50	0	92	5
Area 6 Total	2	6	0	2	4	18	49	1090	48	133	313	0	449	12	981	152
7. Prince George's	0	0	0	0	0	9	3	84	1	28	42	1	61	1	141	22
Area 7 Total	0	0	0	0	0	9	3	84	1	28	42	1	61	1	141	22
State Total	45	33	1	5	8	116	221	4695	262	621	1300	1	2067	62	3936	597

Table 24b
Intake Cases by Alleged Offenses and County of Jurisdiction for Caucasian Youth
FY 1999

Area	Alcohol Violation	Glue Sniffing	Narcotics Distribution	Narcotics Possession	Runaway	Truant	Ungovernable	Carring / Concealing a Weapon	Disorderly Conduct	Failure to Obey Law	False Report	Handgun Violation	Harassment	Loitering	Motor Vehicle / Traffic Violation
1. Baltimore City	53	14	117	137	1	25	17	28	61	9	1	3	6	37	7
Area 1 Total	53	14	117	137	1	25	17	28	61	9	1	3	6	37	7
2. Baltimore	204	4	37	493	0	2	11	71	80	2	12	6	19	2	65
Carroll	105	0	6	124	60	33	31	14	27	1	6	0	31	0	39
Harford	93	0	5	186	1	1	1	27	22	0	15	2	4	0	27
Howard	235	0	12	117	20	0	2	17	20	0	4	0	0	0	51
Area 2 Total	637	4	60	920	81	36	45	129	149	3	37	8	54	2	182
3. Allegany	248	6	8	64	62	12	14	14	24	0	1	0	3	0	29
Frederick	171	0	20	100	57	36	23	29	55	0	9	1	2	0	39
Garrett	34	0	1	25	0	23	15	0	3	0	1	0	2	0	8
Washington	135	0	10	55	4	13	97	21	18	0	2	4	30	0	39
Area 3 Total	588	6	39	244	123	84	149	64	100	0	13	5	37	0	115
4. Caroline	48	0	3	20	36	1	0	5	12	0	2	0	1	0	11
Cecil	83	1	14	70	30	1	3	23	25	1	1	0	0	0	27
Dorchester	35	0	1	36	10	2	0	0	20	0	0	1	3	0	5
Kent	17	0	0	14	2	2	0	1	8	0	1	1	0	0	5
Queen Anne's	34	0	6	62	47	2	0	0	13	0	6	0	3	0	6
Somerset	32	0	0	9	6	0	0	1	2	0	1	1	1	0	2
Talbot	118	0	5	30	24	0	0	4	9	0	1	0	2	0	9
Wicomico	80	0	10	41	24	0	0	15	7	0	6	0	10	0	18
Worcester	269	0	7	180	58	2	1	14	51	4	3	1	1	0	30
Area 4 Total	716	1	46	462	237	10	4	63	147	5	21	4	21	0	113
5. Montgomery	362	0	23	150	1	0	19	60	17	0	12	1	1	0	136
Area 5 Total	362	0	23	150	1	0	19	60	17	0	12	1	1	0	136
6. Anne Arundel	300	1	39	395	1	41	4	64	89	1	35	9	18	1	109
Calvert	77	0	9	80	77	2	0	8	26	0	7	1	2	0	21
Charles	178	0	4	70	3	1	2	11	19	1	6	1	1	0	32
St.Mary's	116	0	0	50	44	0	0	9	16	0	6	0	0	0	19
Area 6 Total	671	1	52	595	125	44	6	92	150	2	54	11	21	1	181
7. Prince George's	51	0	12	89	8	0	23	22	13	0	1	2	0	0	11
Area 7 Total	51	0	12	89	8	0	23	22	13	0	1	2	0	0	11
state total	3078	26	349	2597	576	199	263	458	637	19	139	34	140	40	745

Table 24c
Intake Cases by Alleged Offenses and County of Jurisdiction for Caucasian Youth
FY 1999

Area	Pager at School	Reckless Endangerment	Rogue & Vagabond	Telephone Misuse	Tobacco Violation	Unspecified Felony	Unspecified Misdemeanor / other	Juris. Total
1. Baltimore City	0	4	4	1	0	2	20	1428
Area 1 Total	0	4	4	1	0	2	20	1428
2. Baltimore	2	11	1	37	180	23	52	3908
Carroll	0	3	1	8	52	6	42	1189
Harford	2	2	0	7	427	6	60	1573
Howard	1	7	0	3	52	1	9	995
Area 2 Total	5	23	2	55	711	36	163	7665
3. Allegany	2	4	0	4	66	4	28	1040
Frederick	4	11	0	5	265	3	26	1602
Garrett	0	1	0	0	1	4	14	223
Washington	0	5	0	2	32	8	34	1107
Area 3 Total	6	21	0	11	364	19	102	3972
4. Caroline	0	4	0	2	7	0	10	418
Cecil	1	3	0	10	64	3	27	997
Dorchester	0	0	0	1	4	4	4	253
Kent	0	0	0	0	45	3	6	190
Queen Anne's	0	0	0	2	23	0	22	367
Somerset	0	0	0	0	3	2	1	121
Talbot	2	8	0	1	31	1	13	485
Wicomico	1	0	0	2	82	5	15	778
Worcester	0	3	0	0	114	4	42	1140
Area 4 Total	4	18	0	18	373	22	140	4749
5. Montgomery	0	3	0	15	63	4	54	1829
Area 5 Total	0	3	0	15	63	4	54	1829
6. Anne Arundel	2	16	1	13	949	10	45	4055
Calvert	0	5	0	3	6	4	11	763
Charles	2	0	1	4	28	4	7	959
St.Mary's	0	3	5	3	55	2	9	676
Area 6 Total	4	24	7	23	1038	20	72	6453
7. Prince George's	3	1	2	1	24	0	19	675
Area 7 Total	3	1	2	1	24	0	19	675
state total	22	94	15	124	2573	103	570	26771

Table 25a
Intake Cases by Alleged Offenses and County of Jurisdiction for Hispanic Youth
FY 1999

Area	Aggravated Assault	Child Abuse	Kidnapping	manslaughter	Murder	Robbery	Sex Offense	Simple Assault	Arson Felony/Misdemeanors	Auto Theft/Unauthorized Use	Breaking & Entering	Carjacking	Malicious Destruction	Tampering	Theft/Shoplifting	Trespassing
1. Baltimore City	3	0	0	0	0	0	0	3	1	2	0	0	1	4	0	0
Area 1 Total	3	0	0	0	0	0	0	3	1	2	0	0	1	4	0	0
2. Baltimore	2	3	0	0	0	0	1	5	0	0	0	0	0	6	0	0
Carroll	0	0	0	0	0	0	0	4	0	1	0	0	0	1	0	0
Harford	0	0	0	0	0	0	0	2	1	1	1	0	0	1	0	1
Howard	0	0	0	0	0	0	0	2	0	0	1	0	0	2	0	0
Area 2 Total	2	3	0	0	0	0	1	13	1	2	2	0	0	10	0	1
3. Allegany	0	0	0	0	0	0	0	0	0	0	0	0	0	0	0	0
Frederick	0	0	0	0	0	0	0	2	0	0	0	0	2	11	0	0
Garrett	0	0	0	0	0	0	0	0	0	0	0	0	0	0	0	0
Washington	0	0	0	0	0	0	0	5	0	0	1	0	1	2	0	0
Area 3 Total	0	0	0	0	0	0	0	7	0	0	1	0	3	13	0	0
4. Caroline	0	0	0	0	0	0	0	2	0	0	0	0	1	2	0	0
Cecil	0	0	0	0	0	0	0	4	0	0	3	0	1	4	0	0
Dorchester	0	0	0	0	0	0	0	2	0	0	0	0	1	2	0	0
Kent	0	0	0	0	0	0	0	0	0	0	0	0	0	0	0	0
Queen Anne's	0	0	0	0	0	0	0	0	0	0	0	0	0	0	0	0
Somerset	0	0	0	0	0	0	0	1	0	0	0	0	0	0	0	0
Talbot	0	0	0	0	0	0	0	0	0	0	0	0	0	1	0	0
Wicomico	0	0	0	0	0	0	0	4	0	0	0	0	0	0	0	0
Worcester	0	0	0	0	0	0	0	1	1	0	0	0	0	5	0	0
Area 4 Total	0	0	0	0	0	0	0	14	1	0	3	0	3	14	0	0
5. Montgomery	0	1	0	0	0	4	8	62	6	23	18	0	14	56	0	8
Area 5 Total	0	1	0	0	0	4	8	62	6	23	18	0	14	56	0	8
6. Anne Arundel	0	0	0	0	0	0	0	6	0	0	1	0	3	3	0	0
Calvert	0	0	0	0	0	0	0	0	0	0	0	0	2	0	0	0
Charles	0	0	0	0	0	0	0	2	0	0	0	0	1	2	0	0
St.Mary's	0	0	0	0	0	0	0	0	0	0	0	0	0	4	0	0
Area 6 Total	0	0	0	0	0	0	0	8	0	0	1	0	6	9	0	0
Prince George's	0	0	0	0	0	1	6	16	0	10	3	0	5	36	1	14
Area 7 Total	0	0	0	0	0	1	6	16	0	10	3	0	5	36	1	14
State Total	5	4	0	0	0	5	15	123	9	37	28	0	32	142	1	23

Table 25b
 Intake Cases by Alleged Offenses and County of Jurisdiction for Hispanic Youth
 FY 1999

Area	Alcohol Violation	Glue Sniffing	Narcotics Distribution	Narcotics Possession	Runaway	Truant	Ungovernable	Carring / Conceling a Weapon	Disorderly Conduct	Failure to Obey Law	False Report	Handgun Violation	Harassment	Loitering	Motor Vehicle / Traffic Violation
1. Baltimore City	0	0	3	3	0	0	0	2	1	0	0	0	0	0	2
Area 1 Total	0	0	3	3	0	0	0	2	1	0	0	0	0	0	2
Baltimore	0	0	0	2	0	0	0	0	0	1	0	0	0	0	1
Carroll	0	0	0	1	0	0	0	0	0	0	0	0	0	0	1
Harford	1	0	0	1	0	0	0	0	0	0	0	0	0	0	0
Howard	1	0	0	2	0	0	0	1	0	0	0	0	0	0	0
Area 2 Total	2	0	0	6	0	0	0	1	0	1	0	0	0	0	2
3. Allegany	0	0	0	0	0	0	0	0	0	0	0	0	0	0	0
Frederick	0	0	0	3	1	0	1	0	1	0	0	0	0	0	1
Garrett	0	0	0	0	0	0	0	0	0	0	0	0	0	0	0
Washington	2	0	0	0	0	0	0	0	0	0	0	0	0	0	1
Area 3 Total	2	0	0	3	1	0	1	0	1	0	0	0	0	0	2
4. Caroline	0	0	0	0	0	0	0	0	0	0	0	0	0	0	0
Cecil	2	0	0	0	0	0	0	0	2	0	0	0	0	0	0
Dorchester	0	0	0	0	0	0	0	0	0	0	0	0	0	0	0
Kent	0	0	0	0	0	0	0	0	0	0	0	0	0	0	0
Queen Anne's	0	0	0	0	1	0	0	0	0	0	0	0	0	0	0
Somerset	0	0	0	0	0	0	0	0	0	0	0	0	0	0	0
Talbot	0	0	0	0	0	0	0	0	0	0	0	0	0	0	0
Wicomico	0	0	0	0	2	0	0	0	0	0	0	0	0	0	0
Worcester	5	0	0	3	1	0	0	0	1	1	0	0	0	0	2
Area 4 Total	7	0	0	3	4	0	0	0	3	1	0	0	0	0	2
5. Montgomery	55	0	3	29	0	0	4	7	3	0	2	0	0	0	21
Area 5 Total	55	0	3	29	0	0	4	7	3	0	2	0	0	0	21
6. Anne Arundel	2	0	0	2	0	2	0	1	0	0	0	0	0	0	0
Calvert	0	0	1	0	1	0	0	0	1	0	0	0	0	0	0
Charles	0	0	0	0	0	0	0	0	0	0	0	0	0	0	0
St.Mary's	0	0	0	0	1	0	0	0	0	0	1	0	0	0	0
Area 6 Total	2	0	1	2	2	2	0	1	1	0	1	0	0	0	0
7. Prince George's	5	0	11	15	0	0	5	3	2	0	0	0	0	0	4
Area 7 Total	5	0	11	15	0	0	5	3	2	0	0	0	0	0	4
State Total	73	0	18	61	7	2	10	14	11	2	3	0	0	0	33

Table 25c
 Intake Cases by Alleged Offenses & County of Jurisdiction for Hispanic Youth
 FY 1999

Area	Pager at School	Reckless Endangerment	Rogue & Vagabond	Telephone Misuse	Tobacco Violation	Unspecified Felony	Unspecified Misdemeanor / other	Juris. Total
1. Baltimore City	0	0	0	0	0	0	0	25
Area 1 Total	0	0	0	0	0	0	0	25
Baltimore	0	0	0	0	0	0	0	21
Carroll	0	0	0	0	0	1	0	9
Harford	0	0	0	0	2	0	2	13
Howard	0	0	0	0	0	0	0	9
Area 2 Total	0	0	0	0	2	1	2	52
3. Allegany	0	0	0	0	0	0	0	0
Frederick	0	0	0	0	3	0	0	25
Garrett	0	0	0	0	0	0	0	0
Washington	0	0	0	0	0	0	0	12
Area 3 Total	0	0	0	0	3	0	0	37
4. Caroline	0	0	0	0	0	0	0	5
Cecil	0	0	0	0	0	0	1	17
Dorchester	0	0	0	0	0	0	0	5
Kent	0	0	0	0	0	0	0	0
Queen Anne's	0	0	0	1	0	0	2	4
Somerset	0	0	0	0	0	0	0	1
Talbot	0	0	0	0	0	0	0	1
Wicomico	0	0	0	0	0	1	0	7
Worcester	0	0	0	0	1	0	1	22
Area 4 Total	0	0	0	1	1	1	4	62
5. Montgomery	1	0	1	1	4	3	2	336
Area 5 Total	1	0	1	1	4	3	2	336
6. Anne Arundel	0	0	0	0	8	0	2	30
Calvert	0	0	0	0	0	0	0	5
Charles	0	0	0	0	1	0	0	6
St.Mary's	0	0	0	0	0	0	0	0
Area 6 Total	0	0	0	0	9	0	2	47
7. Prince George's	0	0	1	0	2	0	3	143
Area 7 Total	0	0	1	0	2	0	3	143
State Total	1	0	2	2	21	5	13	702

Table 26a
Intake Cases by Alleged Offenses and County of Jurisdiction for Males
FY 1999

Area	Aggravated Assault	Child Abuse	Kidnapping	manslaughter	Murder	Robbery	Sex Offense	Simple Assault	Arson Felony/Misdemeanors	Theft/Unauthorized Use	Breaking & Entering	Carjacking	Malicious Destruction	Tampering	Theft/Shoplifting	Trespassing
1. Baltimore City	238	6	0	1	34	110	144	1952	43	664	396	12	391	5	494	371
Area 1 Total	238	6	0	1	34	110	144	1952	43	664	396	12	391	5	494	371
2. Baltimore	36	20	2	0	1	132	52	1163	59	240	366	2	501	14	1112	203
Carroll	0	0	0	0	1	1	10	184	6	6	64	0	72	2	123	26
Harford	1	1	0	0	0	11	10	242	12	30	52	1	115	1	230	25
Howard	0	1	0	0	0	23	18	205	14	24	91	0	93	4	164	30
Area 2 Total	37	22	2	0	2	167	90	1794	91	300	573	3	781	21	1629	284
3. Allegany	4	2	0	0	0	5	8	145	12	13	19	0	44	7	106	5
Frederick	1	4	0	0	0	5	22	229	19	18	53	0	144	6	271	38
Garrett	0	0	0	0	0	0	2	24	0	5	8	0	12	0	21	5
Washington	0	1	0	0	1	5	10	188	12	17	32	0	56	1	195	8
Area 3 Total	5	7	0	0	1	15	42	586	43	53	112	0	256	14	593	56
4. Caroline	1	0	0	0	0	0	5	107	6	15	34	0	57	1	67	10
Cecil	0	1	0	1	0	1	10	187	5	14	45	0	109	2	133	15
Dorchester	0	0	0	0	0	4	5	114	3	5	27	0	28	0	63	9
Kent	0	0	0	0	0	0	2	33	0	3	17	0	26	1	27	6
Queen Anne's	0	0	0	0	0	0	1	57	4	2	12	0	35	0	27	13
Somerset	0	0	0	0	0	0	1	37	0	3	24	0	26	0	27	0
Talbot	1	0	0	0	0	1	4	83	15	4	11	0	55	0	58	30
Wicomico	1	0	0	0	0	9	30	327	19	52	46	0	65	0	205	21
Worcester	0	0	0	0	0	4	3	71	6	8	46	0	84	12	160	3
Area 4 Total	3	1	0	1	0	19	61	1016	58	106	262	0	485	16	767	107
5. Montgomery	1	6	0	1	1	83	51	499	27	152	209	2	206	5	514	50
Area 5 Total	1	6	0	1	1	83	51	499	27	152	209	2	206	5	514	50
6. Anne Arundel	2	7	0	0	0	45	58	784	25	84	205	0	280	29	637	125
Calvert	0	0	0	1	0	1	13	115	2	14	46	0	81	0	110	17
Charles	2	2	0	1	4	15	13	253	19	39	69	0	78	0	260	20
St.Mary's	0	0	0	0	0	0	12	148	11	13	49	0	62	0	107	11
Area 6 Total	4	9	0	2	4	61	96	1300	57	150	369	0	501	29	1114	173
Prince George's	3	12	2	0	9	154	85	680	7	308	266	4	234	6	870	233
Area 7 Total	3	12	2	0	9	154	85	680	7	308	266	4	234	6	870	233
State Total	291	63	4	5	51	609	569	7827	326	1733	2187	21	2854	96	5981	1274

Table 26b
Intake Cases by Alleged Offenses and County of Jurisdiction for Males
FY 1999

Area	Alcohol Violation	Glue Sniffing	Narcotics Distribution	Narcotics Possession	Runaway	Truant	Ungovernable	Carring / Concealing a Weapon	Disorderly Conduct	Failure to Obey Law	False Report	Handgun Violation	Harassment	Loitering	Motor Vehicle / Traffic Violation
1. Baltimore City	91	16	2052	984	2	47	60	232	460	135	19	133	7	368	73
Area 1 Total	91	16	2052	984	2	47	60	232	460	135	19	133	7	368	73
2. Baltimore	163	3	93	594	0	3	8	100	119	3	26	17	16	13	86
Carroll	71	0	6	100	20	17	12	16	21	1	4	0	19	0	26
Harford	80	0	27	183	0	1	1	32	23	0	11	4	2	0	33
Howard	161	0	24	116	9	0	1	28	21	0	3	1	1	0	40
Area 2 Total	475	3	150	993	29	21	22	176	184	4	44	22	38	13	185
3. Allegany	156	6	6	48	19	4	8	11	18	0	1	0	0	0	26
Frederick	113	0	40	100	42	24	19	32	64	0	6	1	2	0	44
Garrett	24	0	0	19	0	11	6	0	3	0	1	0	0	0	5
Washington	121	0	27	55	5	12	60	20	15	0	3	4	18	0	38
Area 3 Total	414	6	73	222	66	51	93	63	100	0	11	5	20	0	113
4. Caroline	39	0	2	21	19	3	0	7	15	0	3	0	1	4	10
Cecil	68	1	13	55	6	1	1	18	19	0	0	0	0	0	22
Dorchester	27	0	7	42	4	1	0	3	41	0	0	3	5	0	9
Kent	15	0	0	15	2	0	0	2	21	0	1	1	0	0	5
Queen Anne's	26	0	12	69	20	2	0	0	19	0	4	0	2	0	5
Somerset	20	0	1	14	3	0	0	1	3	1	3	2	1	0	5
Talbot	78	0	8	29	18	0	0	7	12	0	0	0	1	0	8
Wicomico	61	0	25	61	20	1	0	23	18	0	8	1	12	0	22
Worcester	193	0	8	162	23	1	1	17	48	5	1	1	1	0	32
Area 4 Total	527	1	76	468	115	9	2	78	196	6	20	8	23	4	118
5. Montgomery	356	0	42	298	0	0	15	127	42	4	14	2	1	0	177
Area 5 Total	356	0	42	298	0	0	15	127	42	4	14	2	1	0	177
6. Anne Arundel	220	1	65	433	1	31	0	77	99	2	34	12	15	1	115
Calvert	61	0	11	84	31	0	0	8	27	0	8	1	0	0	15
Charles	132	0	15	86	3	2	4	21	18	0	5	4	1	0	28
St.Mary's	107	0	4	60	15	0	0	11	19	0	5	1	2	0	21
Area 6 Total	520	1	95	663	50	33	4	117	163	2	52	18	18	1	179
7. Prince George's	89	1	222	491	11	7	95	200	133	5	11	29	4	8	50
Area 7 Total	89	1	222	491	11	7	95	200	133	5	11	29	4	8	50
State Total	2472	28	2710	4119	273	168	291	993	1278	156	171	217	111	394	895

Table 26c
Intake Cases by Alleged Offenses & County of Jurisdiction for Males
FY 1999

Area	Pager at School	Reckless Endangerment	Rogue & Vagabond	Telephone Misuse	Tobacco Violation	Unspecified Felony	Unspecified Misdemeanor / other	Juris. Total
1. Baltimore City	1	16	34	2	0	11	200	9804
Area 1 Total	1	16	34	2	0	11	200	9804
2. Baltimore	4	16	1	24	155	25	84	5456
Carroll	0	3	0	7	39	9	38	904
Harford	2	5	0	4	314	5	79	1537
Howard	6	7	2	3	34	4	12	1140
Area 2 Total	12	31	3	38	542	43	213	9037
3. Allegany	1	4	0	2	44	3	24	751
Frederick	5	11	0	3	191	6	28	1541
Garrett	0	1	0	0	1	4	13	165
Washington	0	5	0	1	28	10	38	986
Area 3 Total	6	21	0	6	264	23	103	3443
4. Caroline	0	4	0	4	5	0	12	452
Cecil	1	3	0	6	32	1	24	794
Dorchester	0	1	0	0	6	4	5	416
Kent	0	0	0	0	40	1	8	226
Queen Anne's	0	1	0	3	18	0	23	355
Somerset	0	2	0	1	3	2	5	185
Talbot	0	11	0	3	26	0	18	481
Wicomico	4	2	0	0	103	10	24	1170
Worcester	0	3	0	2	93	8	42	1038
Area 4 Total	5	27	0	19	326	26	161	5117
5. Montgomery	9	3	1	15	66	10	73	3062
Area 5 Total	9	3	1	15	66	10	73	3062
6. Anne Arundel	5	17	1	7	681	15	64	4177
Calvert	0	10	0	1	5	3	12	677
Charles	2	2	2	6	37	2	10	1155
St.Mary's	0	5	6	5	47	2	7	730
Area 6 Total	7	34	9	19	770	22	93	6739
Prince George's	14	7	8	4	90	18	115	4485
Area 7 Total	14	7	8	4	90	18	115	4485
State Total	54	139	55	103	2058	153	958	41687

Table 27a
Intake Cases by Alleged Offenses and County of Jurisdiction for Females
FY 1999

Area	Aggravated Assault	Child Abuse	Kidnapping	manslaughter	Murder	Robbery	Sex Offense	Simple Assault	Arson Felony/Misdemeanors	Auto Theft/Unauthorized Use	Breaking & Entering	Carjacking	Malicious Destruction	Tampering	Theft/Shoplifting	Trespassing
1. Baltimore City	50	3	0	1	6	5	7	899	8	85	51	1	84	0	183	71
Area 1 Total	50	3	0	1	6	5	7	899	8	85	51	1	84	0	183	71
2. Baltimore	11	3	2	0	0	10	0	643	10	51	56	0	97	1	725	32
Carroll	0	0	0	0	0	0	3	74	0	7	8	0	13	0	49	3
Harford	0	0	0	0	1	1	2	122	1	16	5	0	9	0	94	5
Howard	0	0	1	0	1	1	1	79	2	3	11	0	11	1	72	9
Area 2 Total	11	3	3	0	2	12	6	918	13	77	80	0	130	2	940	49
3. Allegany	0	0	0	0	0	1	2	65	3	1	2	0	12	1	45	0
Frederick	0	0	0	0	0	2	1	71	0	2	6	0	26	0	108	8
Garrett	0	0	0	0	0	0	0	7	0	0	4	0	0	0	6	0
Washington	0	1	0	0	0	2	0	73	4	1	9	0	11	0	81	4
Area 3 Total	0	1	0	0	0	5	3	216	7	4	21	0	49	1	240	12
4. Caroline	0	0	0	0	0	0	0	58	0	3	1	0	16	0	17	3
Cecil	0	0	0	0	0	0	0	68	1	20	9	0	13	0	47	1
Dorchester	0	0	0	0	0	0	0	48	3	0	4	0	4	0	18	0
Kent	0	0	0	0	0	0	0	23	0	3	1	0	5	0	7	0
Queen Anne's	0	0	0	0	0	0	0	19	0	0	3	0	4	0	3	7
Somerset	0	0	0	0	0	0	0	46	0	3	0	0	8	0	1	0
Talbot	0	0	0	0	0	0	1	36	0	2	3	0	7	0	21	8
Wicomico	2	1	0	0	0	1	1	167	0	9	18	0	14	0	72	6
Worcester	0	0	0	0	0	0	0	27	6	2	4	0	11	0	60	0
Area 4 Total	2	1	0	0	0	1	2	492	10	42	43	0	82	0	246	25
5. Montgomery	0	0	0	0	0	8	5	191	7	28	23	0	14	0	251	15
Area 5 Total	0	0	0	0	0	8	5	191	7	28	23	0	14	0	251	15
6. Anne Arundel	0	0	0	0	0	1	1	370	3	24	30	0	55	0	303	20
Calvert	0	0	0	0	0	0	0	49	0	12	13	0	11	0	31	12
Charles	0	1	0	0	0	0	1	119	2	8	18	0	24	0	181	5
St.Mary's	0	0	0	0	0	0	0	62	1	6	8	0	11	0	30	3
Area 6 Total	0	1	0	0	0	1	2	600	6	50	69	0	101	0	545	40
7. Prince George's	1	1	0	0	1	8	1	256	9	41	38	1	44	0	330	36
Area 6 Total	1	1	0	0	1	8	1	256	9	41	38	1	44	0	330	36
State Total	64	10	3	1	9	40	26	3572	60	327	325	2	504	3	2735	248

Table 27b
Intake Cases by Alleged Offenses and County of Jurisdiction for Females
FY 1999

Area	Alcohol Violation	Glue Sniffing	Narcotics Distribution	Narcotics Possession	Runaway	Truant	Ungovernable	Carring / Concealing a Weapon	Disorderly Conduct	Disorderly Conduct	False Report	Handgun Violation	Harassment	Loitering	Motor Vehicle / Traffic Violation
1. Baltimore City	27	1	114	65	2	50	104	75	249	23	12	10	7	40	3
Area 1 Total	27	1	114	65	2	50	104	75	249	23	12	10	7	40	3
2. Baltimore	77	1	6	157	0	0	7	14	54	1	8	1	16	0	19
Carroll	37	0	1	31	46	18	22	1	9	0	3	0	13	0	15
Harford	21	0	4	47	1	1	0	5	8	0	6	1	2	0	4
Howard	93	0	2	40	20	0	2	2	11	0	3	0	0	0	23
Area 2 Total	228	1	13	275	67	19	31	22	82	1	20	2	31	0	61
3. Allegany	110	0	3	17	47	10	9	3	8	0	0	0	4	0	3
Frederick	70	0	7	22	43	18	13	4	15	0	4	0	1	0	11
Garrett	10	0	1	6	0	12	10	0	0	0	0	0	2	0	3
Washington	36	0	2	7	2	3	52	4	5	0	0	0	16	0	10
Area 3 Total	226	0	13	52	92	43	84	11	28	0	4	0	23	0	27
4. Caroline	13	0	1	3	23	0	0	0	8	3	0	0	0	0	4
Cecil	19	0	3	23	24	0	2	7	13	1	1	0	0	0	6
Dorchester	14	0	0	9	20	1	0	1	22	0	0	0	2	0	2
Kent	7	0	0	4	3	2	0	0	14	0	2	0	0	0	0
Queen Anne's	10	0	0	5	33	0	1	0	1	0	2	0	1	0	1
Somerset	14	0	0	0	10	0	0	2	2	0	0	0	0	0	1
Talbot	47	0	1	6	23	0	0	1	4	0	1	0	1	0	2
Wicomico	35	0	2	3	26	1	0	5	7	0	1	0	2	0	3
Worcester	95	0	3	40	45	2	2	0	19	2	2	0	0	0	5
Area 4 Total	254	0	10	93	207	6	5	16	90	6	9	0	6	0	24
5. Montgomery	151	0	6	38	6	0	26	9	18	1	5	0	1	0	41
Area 5 Total	151	0	6	38	6	0	26	9	18	1	5	0	1	0	41
6. Anne Arundel	106	0	9	86	0	30	4	17	38	0	12	1	7	0	22
Calvert	27	0	4	10	61	2	0	2	7	0	3	0	2	0	6
Charles	72	0	0	22	2	1	1	1	11	1	5	0	1	0	14
St.Mary's	40	0	0	14	54	0	0	0	14	0	3	0	0	0	6
Area 6 Total	245	0	13	132	117	33	5	20	70	1	23	1	10	0	48
7. Prince George's	23	0	5	40	19	3	100	44	22	5	9	0	2	2	11
Area 7 Total	23	0	5	40	19	3	100	44	22	5	9	0	2	2	11
State Total	1154	2	174	695	510	154	355	197	559	37	82	13	80	42	215

Table 27c
 Intake Cases by Alleged Offenses and County of Jurisdiction for Females
 FY 1999

Area	Pager at School	Reckless Endangerment	Rogue & Vagabond	Telephone Misuse	Tobacco Violation	Unspecified Felony	Unspecified Misdemeanor / other	Juris. Total
1. Baltimore City	0	0	4	2	1	2	39	2284
Area 1 Total	0	0	4	2	1	2	39	2284
2. Baltimore	3	2	0	30	50	9	6	2102
Carroll	0	0	1	3	15	4	5	381
Harford	0	0	0	3	164	2	23	548
Howard	1	0	0	0	23	0	1	413
Area 2 Total	4	2	1	36	252	15	35	3444
3. Allegany	1	0	0	2	24	1	7	381
Frederick	1	2	0	3	107	0	7	552
Garrett	0	0	0	0	0	0	1	62
Washington	0	3	0	1	7	4	8	346
Area 3 Total	2	5	0	6	138	5	23	1341
4. Caroline	0	0	0	0	3	0	2	158
Cecil	0	0	0	4	33	2	6	303
Dorchester	0	0	0	3	1	1	0	153
Kent	0	0	0	3	10	2	6	92
Queen Anne's	0	0	0	0	5	0	6	101
Somerset	0	0	0	0	1	0	0	88
Talbot	3	1	0	0	8	1	1	178
Wicomico	0	0	0	3	25	1	5	410
Worcester	0	0	0	0	33	1	8	367
Area 4 Total	3	1	0	13	119	8	34	1850
5. Montgomery	1	1	0	4	19	3	17	889
Area 5 Total	1	1	0	4	19	3	17	889
6. Anne Arundel	1	1	0	7	351	3	7	1509
Calvert	0	0	0	2	2	1	1	258
Charles	1	0	0	1	4	4	0	500
St.Mary's	0	0	1	1	13	0	5	272
Area 6 Total	2	1	1	11	370	8	13	2539
7. Prince George's	1	0	3	1	11	4	44	1116
Area 75 Total	1	0	3	1	11	4	44	1116
State Total	13	10	9	73	910	45	205	13463

Table 28
Alleged Offense Rates Per 1,000 Population by Offense Category & County of Residence
FY 1999

Area	11 - 17 Yrs. Population	Person - to - Person	Per 1,000 Population	Property	Per 1,000 Population	Alcohol	Per 1,000 Population	Narcotics	Per 1,000 Population	CINS	Per 1,000 Population	Other	Per 1,000 Population	County of Residence Total	County of Residence Per 1,000 Population
1. Baltimore City	60266	3527	58.5	3850	63.9	150	2.5	3169	52.6	269	4.5	2173	36.1	13138	218.0
Area 1 Total	60266	3527	58.5	3850	63.9	150	2.5	3169	52.6	269	4.5	2173	36.1	13138	218.0
2. Baltimore	62957	2013	32.0	2574	40.9	266	4.2	880	14.0	48	0.8	951	15.1	6732	106.9
Carroll	16613	269	16.2	395	23.8	115	6.9	147	8.8	137	8.2	244	14.7	1307	78.7
Harford	23405	390	16.7	638	27.3	113	4.8	268	11.5	6	0.3	717	30.6	2132	91.1
Howard	25182	299	11.9	480	19.1	182	7.2	168	6.7	27	1.1	223	8.9	1379	54.8
Area 2 Total	128157	2971	23.2	4087	31.9	676	5.3	1463	11.4	218	1.7	2135	16.7	11550	90.1
3. Allegany	7096	216	30.4	260	36.6	235	33.1	77	10.9	88	12.4	173	24.4	1049	147.8
Frederick	20585	331	16.1	669	32.5	176	8.5	155	7.5	152	7.4	531	25.8	2014	97.8
Garrett	3483	29	8.3	56	16.1	30	8.6	24	6.9	38	10.9	30	8.6	207	59.4
Washington	12148	266	21.9	384	31.6	131	10.8	71	5.8	125	10.3	234	19.3	1211	99.7
Area 3 Total	43312	842	19.4	1369	31.6	572	13.2	327	7.5	403	9.3	968	22.3	4481	103.5
4. Caroline	3185	172	54.0	235	73.8	55	17.3	33	10.4	43	13.5	91	28.6	629	197.5
Cecil	10097	259	25.7	407	40.3	82	8.1	87	8.6	29	2.9	191	18.9	1055	104.5
Dorchester	2809	162	57.7	173	61.6	45	16.0	42	15.0	15	5.3	108	38.4	545	194.0
Kent	1914	37	19.3	87	45.5	15	7.8	14	7.3	8	4.2	86	44.9	247	129.0
Queen Anne's	3818	97	25.4	115	30.1	39	10.2	84	22.0	54	14.1	113	29.6	502	131.5
Somerset	2110	86	40.8	104	49.3	29	13.7	15	7.1	12	5.7	40	19.0	286	135.5
Talbot	2715	119	43.8	189	76.0	102	42.0	33	35.0	45	70.0	106	39.0	594	218.8
Wicomico	8174	522	63.9	472	57.7	109	13.3	85	10.4	40	4.9	270	33.0	1498	183.3
Worcester	3753	93	24.8	224	59.7	55	14.7	52	13.9	35	9.3	137	36.5	596	158.8
Area 4 Total	38575	1547	40.1	2006	52.0	531	13.8	445	11.5	281	7.3	1142	29.6	5952	154.3
5. Montgomery	78353	804	10.3	1362	17.4	433	5.5	371	4.7	57	0.7	652	8.3	3679	47.0
Area 5 Total	78353	804	10.3	1362	17.4	433	5.5	371	4.7	57	0.7	652	8.3	3679	47.0
6. Anne Arundel	48714	1264	25.9	1632	33.5	358	7.3	625	12.8	83	1.7	1509	31.0	5471	112.3
Calvert	8808	173	19.6	353	40.1	99	11.2	102	11.6	84	9.5	121	13.7	932	105.8
Charles	14629	412	28.2	640	43.7	202	13.8	138	9.4	25	1.7	195	13.3	1612	110.2
St.Mary's	10081	228	22.6	321	31.8	135	13.4	77	7.6	39	3.9	173	17.2	973	96.5
Area 6 Total	82232	2077	25.3	2946	35.8	794	9.7	942	11.5	231	2.8	1998	24.3	8988	109.3
7. Prince George's	76898	1091	14.2	2093	27.2	131	1.7	652	8.5	196	2.5	766	10.0	4929	64.1
Area 7 Total	76898	1091	14.2	2093	27.2	131	1.7	652	8.5	196	2.5	766	10.0	5263	68.4
State Total	507793	12859	25.3	17713	34.9	3287	6.5	7369	14.5	1655	3.3	9834	19.4	52717	103.8

Note: 1. FY 1999 11 - 17 Year old Population Projections are taken from The U.S. Census Bureau, Population Estimates for States by Age, Sex and Race.

2. Total did not add up to 55,150 because 1730 were Out-Of-State Cases and 703 were unknown county cases.

Table 29
Alleged Offense Rates Per 1,000 Population by Offense Category & County of Offense
FY 1999

Area	11 - 17 Yrs. Population	Person - to - Person	Per 1,000 Population	Property	Per 1,000 Population	Alcohol	Per 1,000 Population	Narcotics	Per 1,000 Population	CINS	Per 1,000 Population	Other	Per 1,000 Population	County of Offense Total	County of Offense Per 1,000 Population
1. Baltimore City	60266	3448	57.2	2852	47.3	114	1.9	3230	53.6	265	4.4	2155	35.8	12064	200.2
Area 1 Total	60266	3448	57.2	2852	47.3	114	1.9	3230	53.6	265	4.4	2155	35.8	12064	200.2
2. Baltimore	62957	2071	32.9	3457	54.9	212	3.4	853	13.5	18	0.3	887	14.1	7498	119.1
Carroll	16613	273	16.4	378	22.8	108	6.5	138	8.3	135	8.1	252	15.2	1284	77.3
Harford	23405	394	16.8	597	25.5	100	4.3	262	11.2	4	0.2	735	31.4	2092	89.4
Howard	25182	322	12.8	523	20.8	249	9.9	180	7.1	31	1.2	213	8.5	1518	60.3
Area 2 Total	128157	3060	23.9	4955	38.7	669	5.2	1433	11.2	188	1.5	2087	16.3	12392	96.7
3. Allegany	7096	234	33.0	272	38.3	266	37.5	80	11.3	97	13.7	188	26.5	1137	160.2
Frederick	20585	336	16.3	696	33.8	171	8.3	166	8.1	158	7.7	546	26.5	2073	100.7
Garrett	3483	33	9.5	60	17.2	34	9.8	27	7.8	39	11.2	33	9.5	226	64.9
Washington	12148	277	22.8	428	35.2	155	12.8	87	7.2	134	11.0	236	19.4	1317	108.4
Area 3 Total	43312	880	20.3	1456	33.6	626	14.5	360	8.3	428	9.9	1003	23.2	4753	109.7
4. Caroline	3185	170	53.4	231	72.5	51	16.0	28	8.8	45	14.1	89	27.9	614	192.8
Cecil	10097	264	26.1	403	39.9	84	8.3	94	9.3	34	3.4	190	18.8	1069	105.9
Dorchester	2809	170	60.5	164	58.4	40	14.2	58	20.6	26	9.3	108	38.4	566	201.5
Kent	1914	58	30.3	96	50.2	22	11.5	19	9.9	7	3.7	112	58.5	314	164.1
Queen Anne's	3818	77	20.2	109	28.5	36	9.4	86	22.5	56	14.7	92	24.1	456	119.4
Somerset	2110	85	40.3	92	43.6	34	16.1	15	7.1	13	6.2	37	17.5	276	130.8
Talbot	2715	132	48.6	222	76.0	130	42.0	44	35.0	43	70.0	110	40.5	681	250.8
Wicomico	8174	529	64.7	508	62.1	92	11.3	91	11.1	45	5.5	274	33.5	1539	188.3
Worcester	3753	105	28.0	398	106.0	401	106.8	212	56.5	74	19.7	349	93.0	1539	410.1
Area 4 Total	38575	1590	41.2	2223	57.6	890	23.1	647	16.8	343	8.9	1361	35.3	7054	182.9
5. Montgomery	78353	840	10.7	1482	18.9	461	5.9	377	4.8	47	0.6	647	8.3	3854	49.2
Area 5 Total	78353	840	10.7	1482	18.9	461	5.9	377	4.8	47	0.6	647	8.3	3854	49.2
6. Anne Arundel	48714	1265	26.0	1816	37.3	315	6.5	591	12.1	67	1.4	1606	33.0	5660	116.2
Calvert	8808	179	20.3	348	39.5	85	9.7	106	12.0	94	10.7	116	13.2	928	105.4
Charles	14629	409	28.0	722	49.4	201	13.7	122	8.3	13	0.9	178	12.2	1645	112.4
St.Mary's	10081	223	22.1	305	30.3	141	14.0	78	7.7	69	6.8	172	17.1	988	98.0
Area 6 Total	82232	2076	25.2	3191	38.8	742	9.0	897	10.9	243	3.0	2072	25.2	9221	112.1
7. Prince George's	76898	1190	15.5	2390	31.1	114	1.5	742	9.6	232	3.0	828	10.8	5496	71.5
Area 7 Total	76898	1190	15.5	2390	31.1	114	1.5	742	9.6	232	3.0	828	10.8	5263	68.4
State Total	507793	13084	25.8	18549	36.5	3616	7.1	7686	15.1	1746	3.4	10153	20.0	54834	108.0

Note: 1. FY 1999 11 - 17 Year old Population Projections are taken from "The U.S. Census Bureau, Population Estimates for States by Age, Sex and Race."

2. Total did not add up to 55,150 because 316 were Out-Of-State Cases.

Table 30
Rates of Total and Delinquent Referrals per 1,000 Youth Population
Ages 11 - 17 Years by County of Residence
FY 1999

County of Residence	1999 11 - 17 Yrs. Population	Total Referrals	Per 1,000 pop.	Delinquent Referrals	Per 1,000 pop.
1. Baltimore City	60266	13138	218.0	12688	210.5
Area 1 Total	60266	13138	218.0	12688	210.5
Baltimore	62957	6732	106.9	6184	98.2
Carroll	16613	1307	78.7	1000	60.2
Harford	23405	2132	91.1	1548	66.1
Howard	25182	1379	54.8	1116	44.3
Area 2 Total	128157	11550	90.1	9848	76.8
3. Allegany	7096	1049	147.8	666	93.9
Frederick	20585	2014	97.8	1394	67.7
Garrett	3483	207	59.4	138	39.6
Washington	12148	1211	99.7	910	74.9
Area 3 Total	43312	4481	103.5	3108	71.8
4. Caroline	3185	629	197.5	519	163.0
Cecil	10097	1055	104.5	881	87.3
Dorchester	2809	545	194.0	476	169.5
Kent	1914	247	129.0	200	104.5
Queen Anne's	3818	502	131.5	359	94.0
Somerset	2110	286	135.5	240	113.7
Talbot	2715	594	218.8	416	153.2
Wicomico	8174	1498	183.3	1231	150.6
Worcester	3753	596	158.8	443	118.0
Area 4 Total	38575	5952	154.3	4765	123.5
5. Montgomery	78353	3679	47.0	3104	39.6
Area 5 Total	78353	3679	47.0	3104	39.6
6. Anne Arundel	48714	5471	112.3	4110	84.4
Calvert	8808	932	105.8	729	82.8
Charles	14629	1612	110.2	1336	91.3
St. Mary's	10081	973	96.5	742	73.6
Area 6 Total	82232	8988	109.3	6917	84.1
7. Prince George's	76898	4929	64.1	4489	58.4
Area 7 Total	76898	4929	64.1	4489	58.4
State Total	507783	52717	103.8	44919	88.5

Note: FY 1999 11-17 Year Old Population Projections are taken from Population Estimates for States by Age and released on the Internet by U.S. Census Bureau.

Table 31
Court Dispositions of Formalized Cases by Gender
FY 1999

Court Dispositions by Gender	Males	Percent Total	Females	Percent Total	Juris. Total	Percent Total
Probation/prob. to parent/ protective supervision	4619	24.9	988	25.7	5607	25.1
Dismissed/Closed	5044	27.2	896	23.3	5940	26.5
Committed to DJJ for placement	1982	10.7	188	4.9	2170	9.7
Continued case/STET	2621	14.1	646	16.8	3267	14.6
Petition denied by State Attorney*	183	1.0	31	0.8	214	1.0
Petition Withdrawn	30	0.2	4	0.1	34	0.2
Jurisdiction Waived	259	1.4	7	0.2	266	1.2
Inter-Region/State	87	0.5	13	0.3	100	0.4
Nol Pros	256	1.4	56	1.5	312	1.4
Transfer from one jurisdiction to another	88	0.5	12	0.3	100	0.4
Writ Pending	315	1.7	85	2.2	400	1.8
Others	132	0.7	19	0.5	151	0.7
Disposition Pending*	2914	15.7	902	23.4	3816	17.1
State Total	18530	100.0	3847	100.0	22377	100.0

Note: * In FY 1998, 3,149 cases were 'Petition denied by State Attorney.' For this group, FY 1999 data shows 214 cases. Therefore, the majority of the 'Disposition Pending' cases should be 'Petition denied by State Attorney.'

**Table 32
Court Disposition of Formalized Cases by Race
FY 1999**

Court Dispositions by Race	African - American	Percent Total	Caucasian	Percent Total	Hispanic	Percent Total	Other	Percent Total	Juris. Total
Probation/prob. to parent/ protective supervision	2991	21.5	2471	31.0	70	25.9	75	34.2	5607
Dismissed/Closed	4042	29.0	1766	22.2	74	27.4	58	26.5	5940
Committed to DJJ for placement	1390	10.0	732	9.2	21	7.8	27	12.3	2170
Continued case/STET	1760	12.6	1441	18.1	34	12.6	32	14.6	3267
Petition denied by State Attorney*	138	1.0	68	0.9	2	0.7	6	2.7	214
Petition Withdrawn	17	0.1	17	0.2	0	0.0	0	0.0	34
Jurisdiction Waived	157	1.1	105	1.3	1	0.4	3	1.4	266
Inter-Region/State	66	0.5	29	0.4	3	1.1	2	0.9	100
Nol Pros	128	0.9	181	2.3	1	0.4	2	0.9	312
Transfer from one jurisdiction to another	41	0.3	57	0.7	2	0.7	0	0.0	100
Writ Pending	317	2.3	70	0.9	11	4.1	2	0.9	400
Others	78	0.6	70	0.9	1	0.4	2	0.9	151
Disposition Pending*	2800	20.1	956	12.0	50	18.5	10	4.6	3816
State Total	13925	100.0	7963	100.0	270	100.0	219	100.0	22377

Note: * In FY 1998, 3,149 cases were 'Petition denied by State Attorney.' For this group, FY 1999 data shows 214 cases. Therefore, the majority of the 'Disposition Pending' cases should be 'Petition denied by State Attorney.'