



Long Term Trends

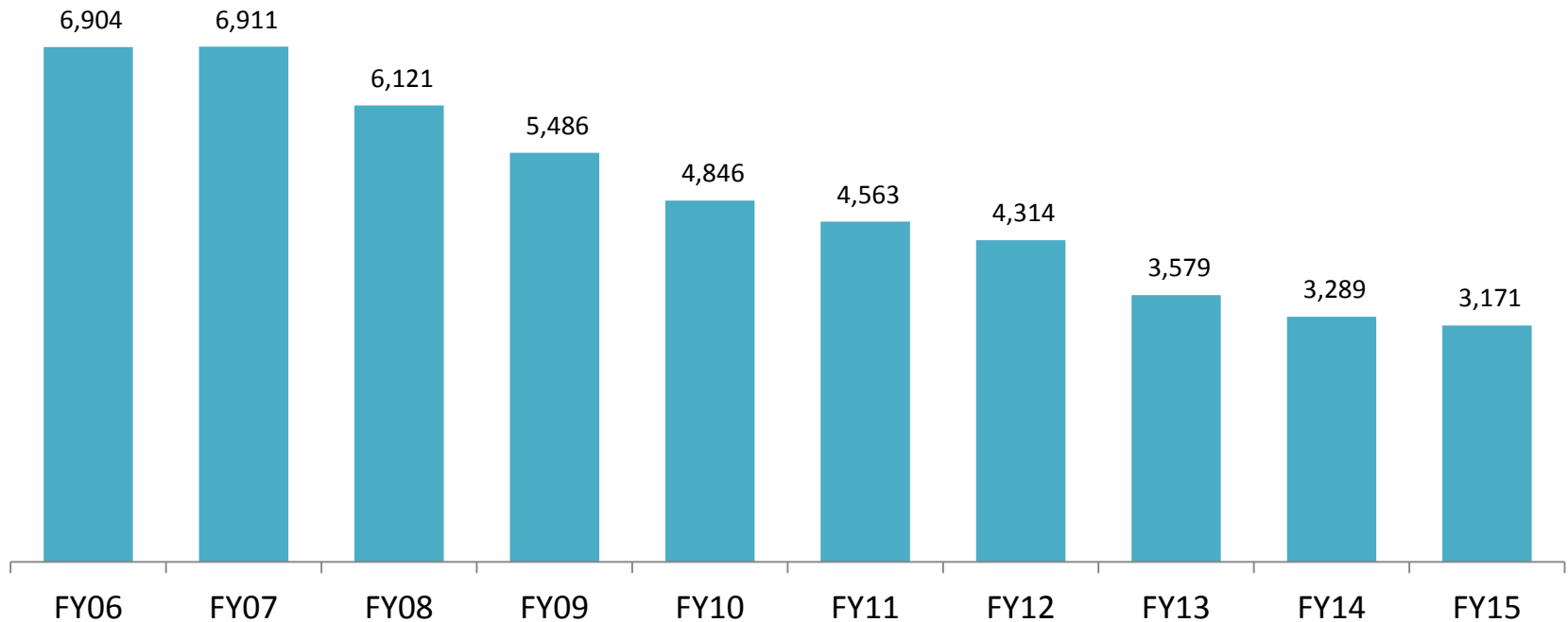
DJS Eastern Shore Region:

Counties of Caroline, Cecil,
Dorchester, Kent, Queen Anne's,
Somerset, Talbot, Wicomico, and
Worcester

DJS Office of Research and Evaluation, January 2015

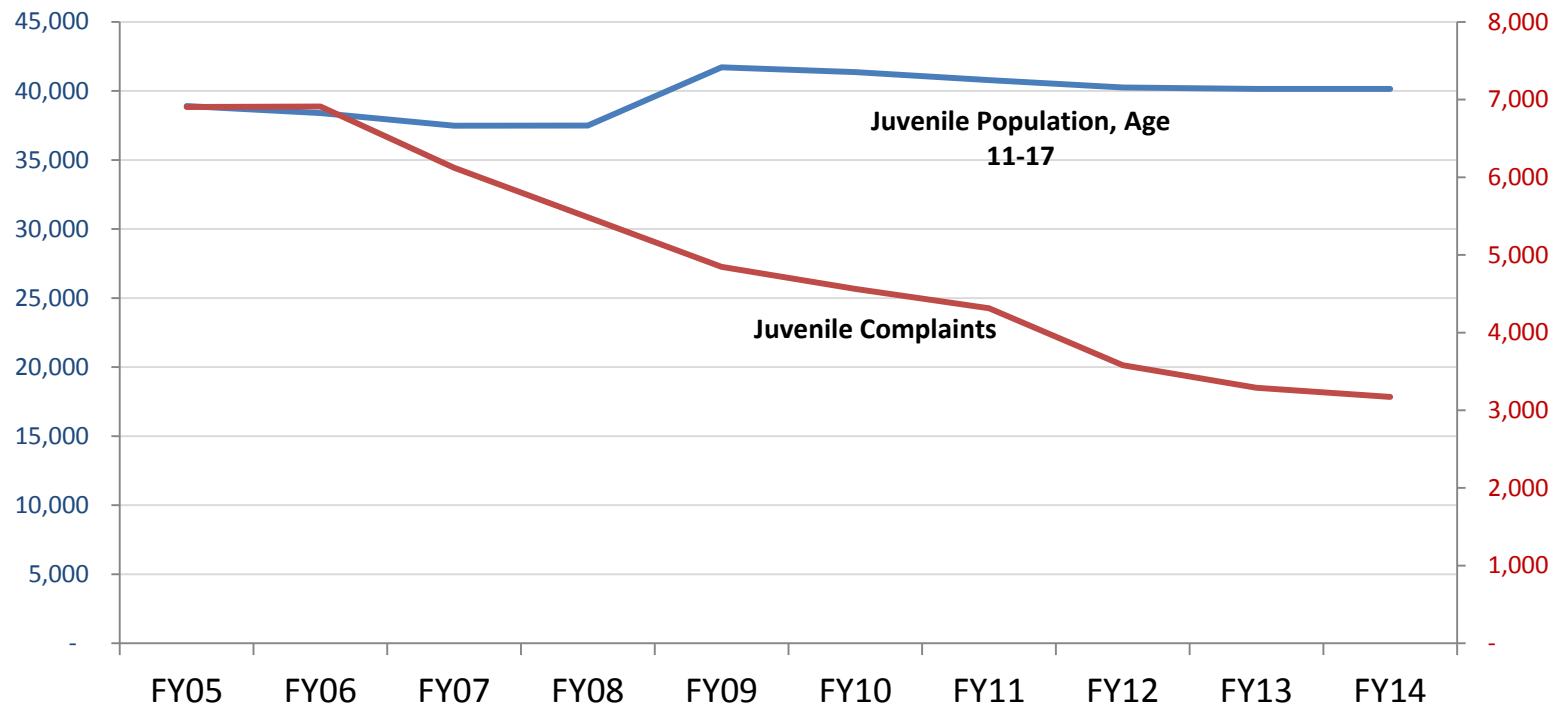
Eastern Region Juvenile Complaints Have Declined Significantly

- Eastern Region complaints referred to DJS Intake declined 54% in ten years.
- Statewide complaints declined 56% over the same period.



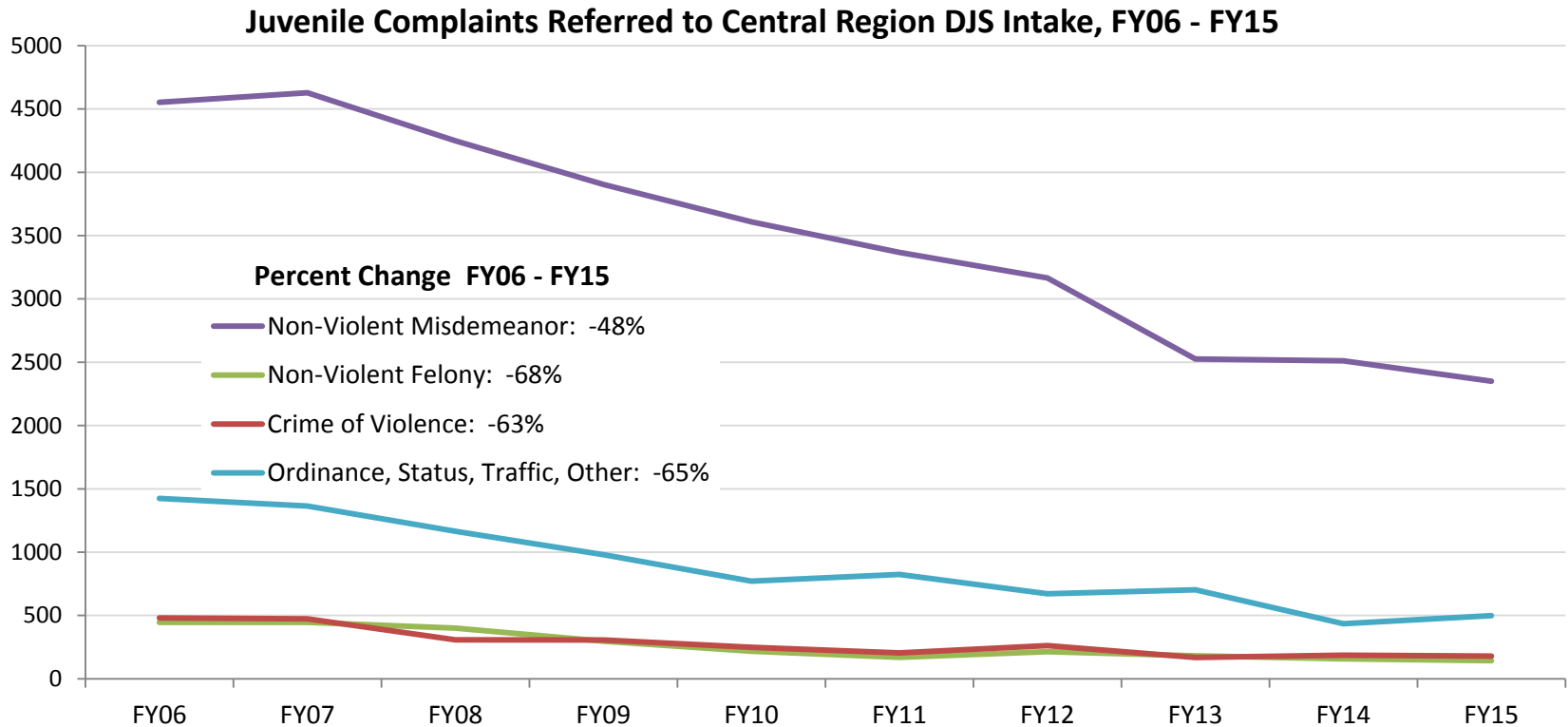
Eastern Region Juvenile Complaints Declined Significantly, While The Overall Juvenile Population Increased Slightly

- Eastern Region overall juvenile population increased 3.2% since FY06.
- Eastern Region juvenile complaints referred to DJS declined 54.1% over the same period.



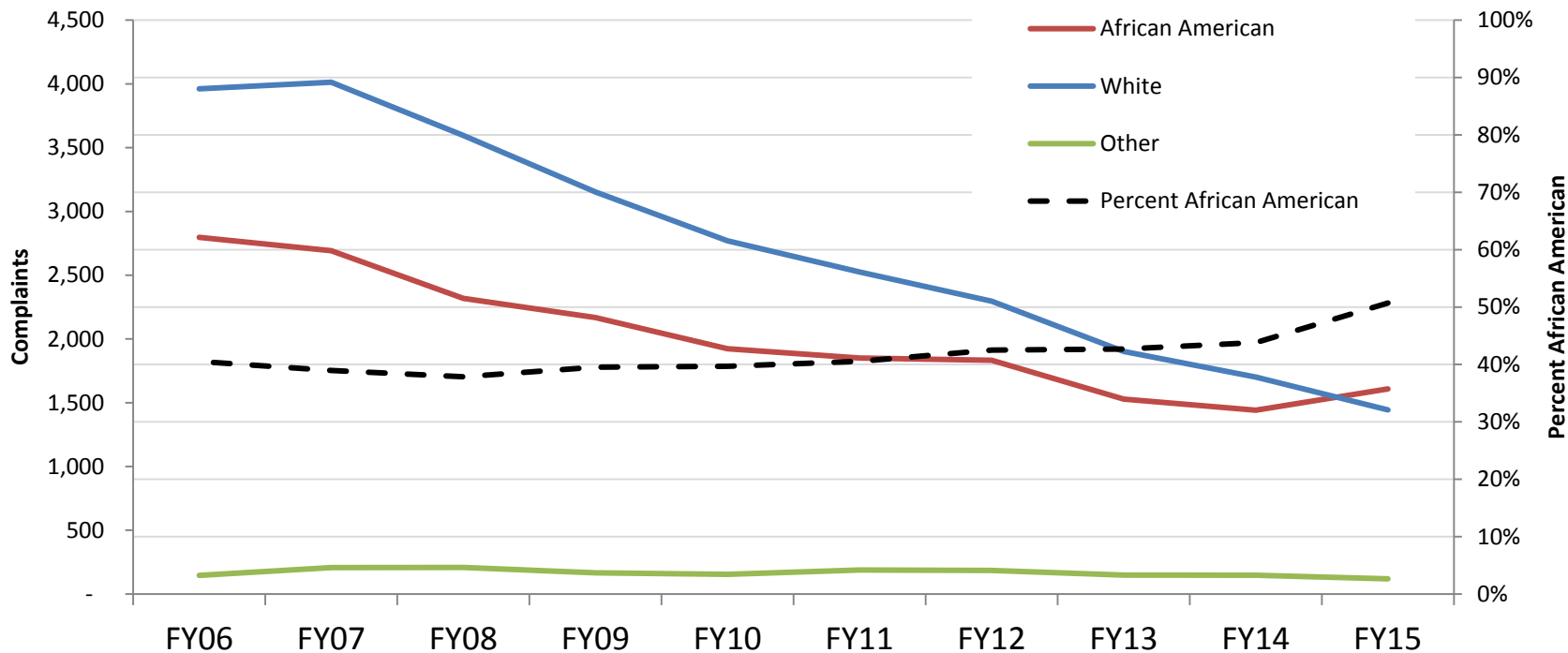
Eastern Region Juvenile Complaints Have Declined in All Categories

- Juvenile non-violent misdemeanors, which make up the greatest portion of offenses, dropped 48% between FY06 and FY15.
- Juvenile crimes of violence have decreased 63% from FY06 to FY15.



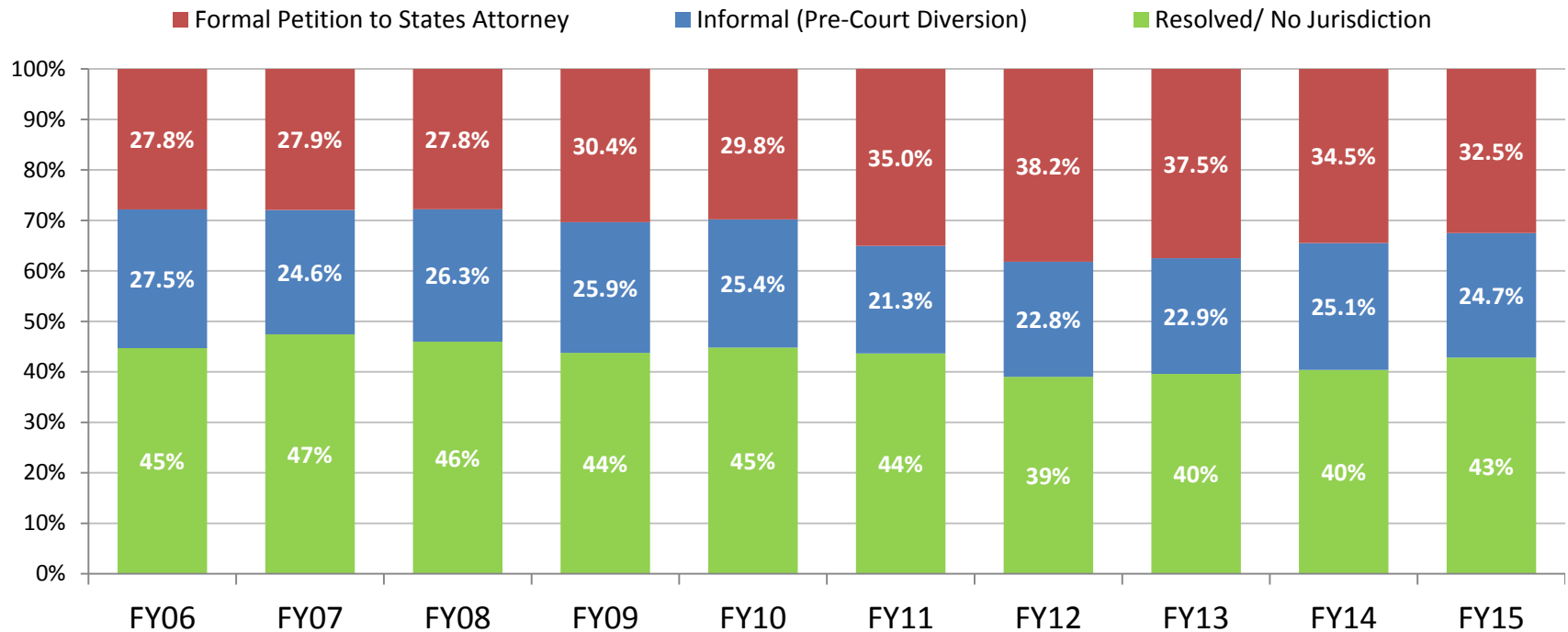
Eastern Region Juvenile Complaints Have Declined For All Race/Ethnicities Since FY06

- Complaints for African American youth declined 42.5%, and declined 63.6% for white youth.
- African American youth comprise 51% of complaints, up from 41% in FY06.
- African American youth comprise 19% of the general population.



The Proportion of Eastern Region Complaints Referred to Court Increased Slightly

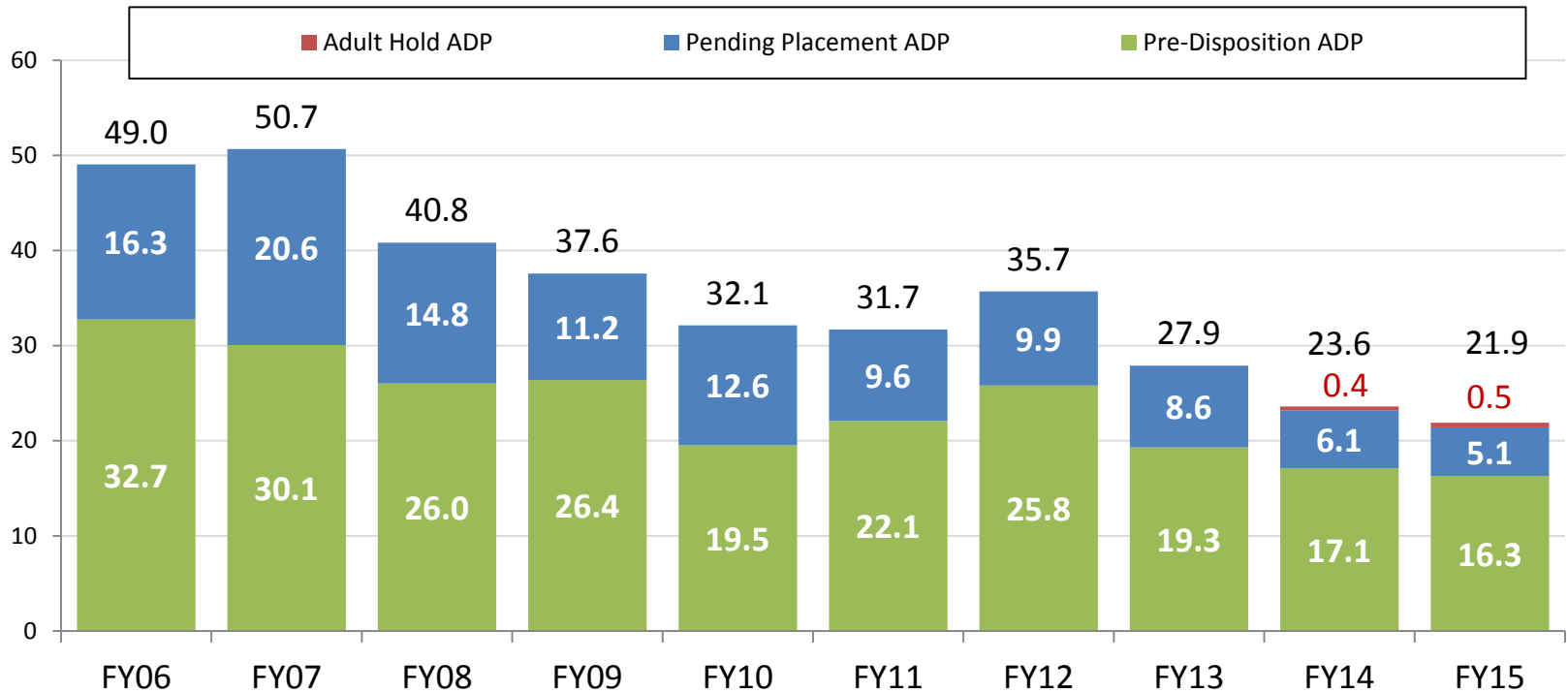
- 32.5% of Eastern Region complaints were referred to court by DJS Intake in FY15, 4.7% more than in FY06. Statewide 50.9% were referred to court.
- 24.7% of Eastern Region complaints were diverted to an informal DJS pre-court case. Statewide 16.6% were diverted.





Eastern Region Detention Population Declined Significantly

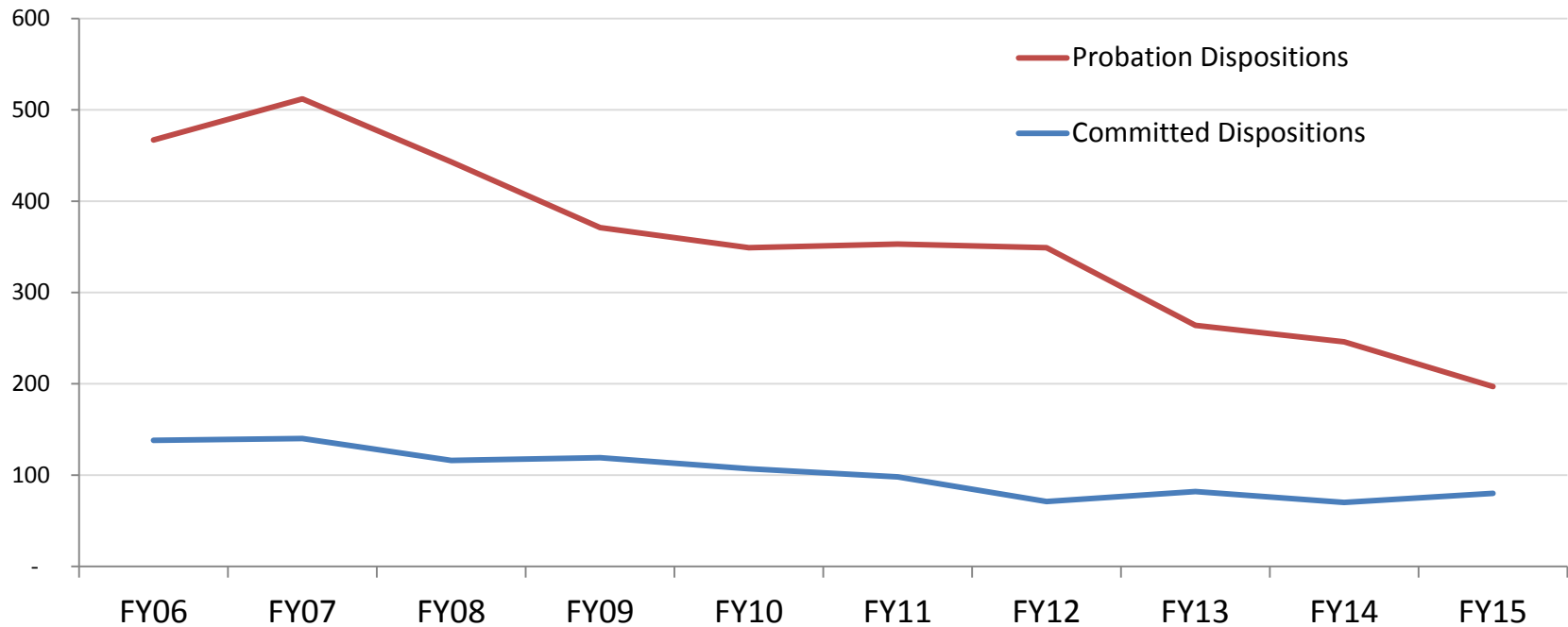
- Eastern Region daily population in DJS detention declined 55.3% in ten years, to 21.9 in FY15. The statewide population declined 36.7% over the same period.
- Pre-disposition ADP declined 50.2%, and the pending placement population declined 11.2% in ten years.
- Cases detained for the adult court make up just 0.9% of the DJS detained population in Eastern Region.





Juvenile Probation and Commitment Orders Have Declined

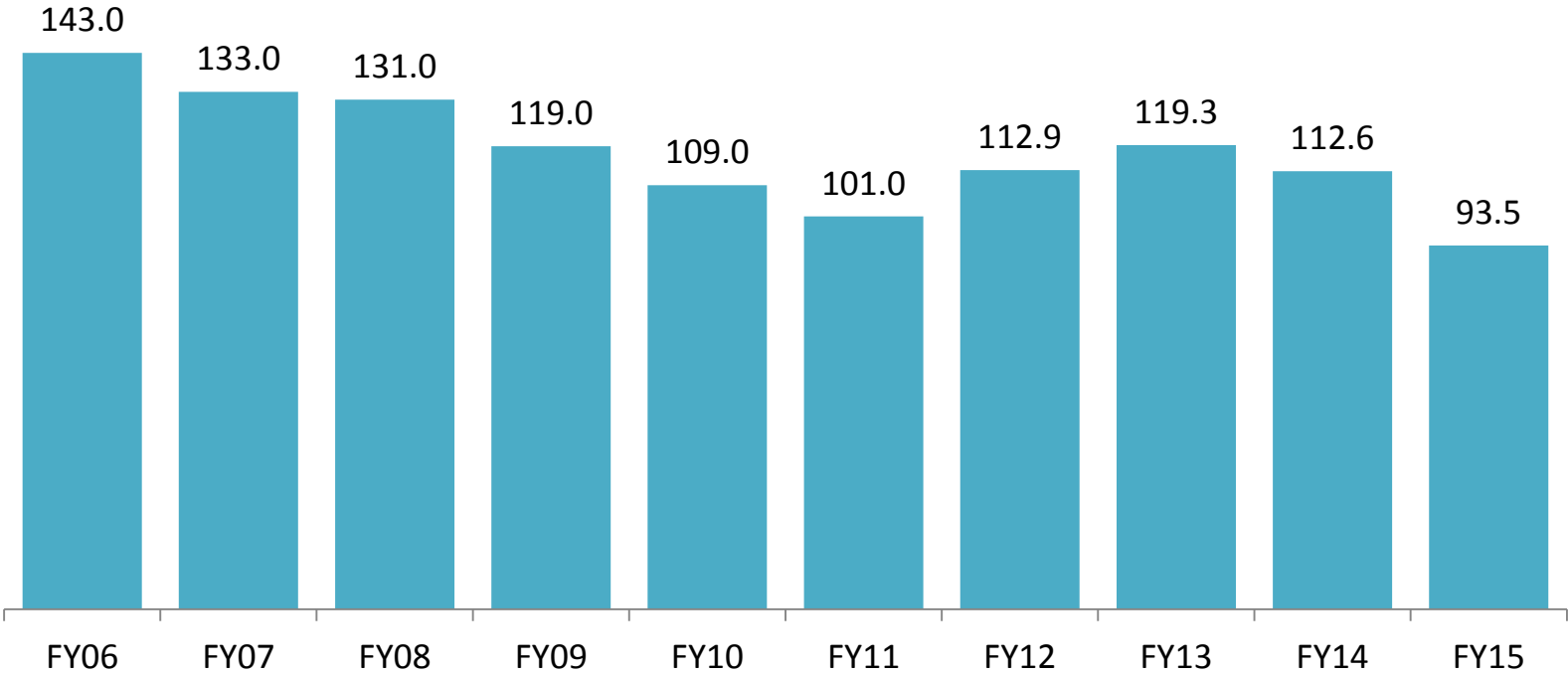
- Eastern Region Juvenile probation orders declined 57.8% in ten years. Statewide probation orders declined 49.1% over the same period.
- Eastern Region juvenile commitments declined 42.0% in ten years. Statewide commitments declined 49.2% over the same period.





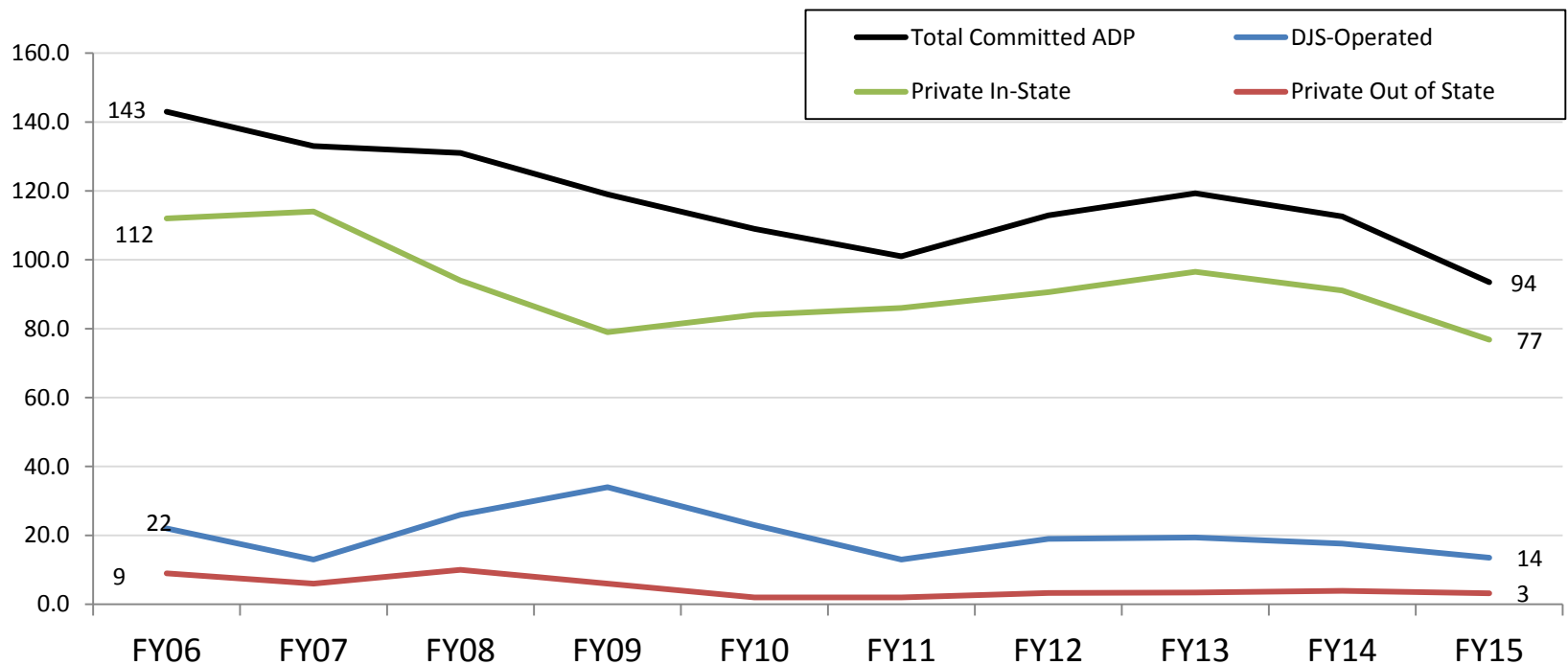
Eastern Region Committed Youth Population Has Declined

- Overall daily population of Eastern Region youth committed by the juvenile court to out of home placement declined 34.6% over ten years, from 143 in FY06 to 93.5 in FY15.
- Statewide average committed population declined 32.7% over the same period.



Committed Youth Population Has Declined In All Categories

- Overall committed Out-of- Home population has declined 34.6% since FY06.
- DJS-Operated ADP decreased 36.4%, and Private In-State has declined 31.3% since FY06.
- Out of State committed average population declined 66.7% since FY06



Recidivism Rates for DJS Eastern Region Committed Youth Have Increased

- 13.1% of youth released from committed placement in FY14 had a new offense within a year, which resulted in a delinquent adjudication or criminal conviction. This is up from 8.7% in FY12.
- The Statewide rate was 19.1% in FY14, down 1.9 points from FY12.

