

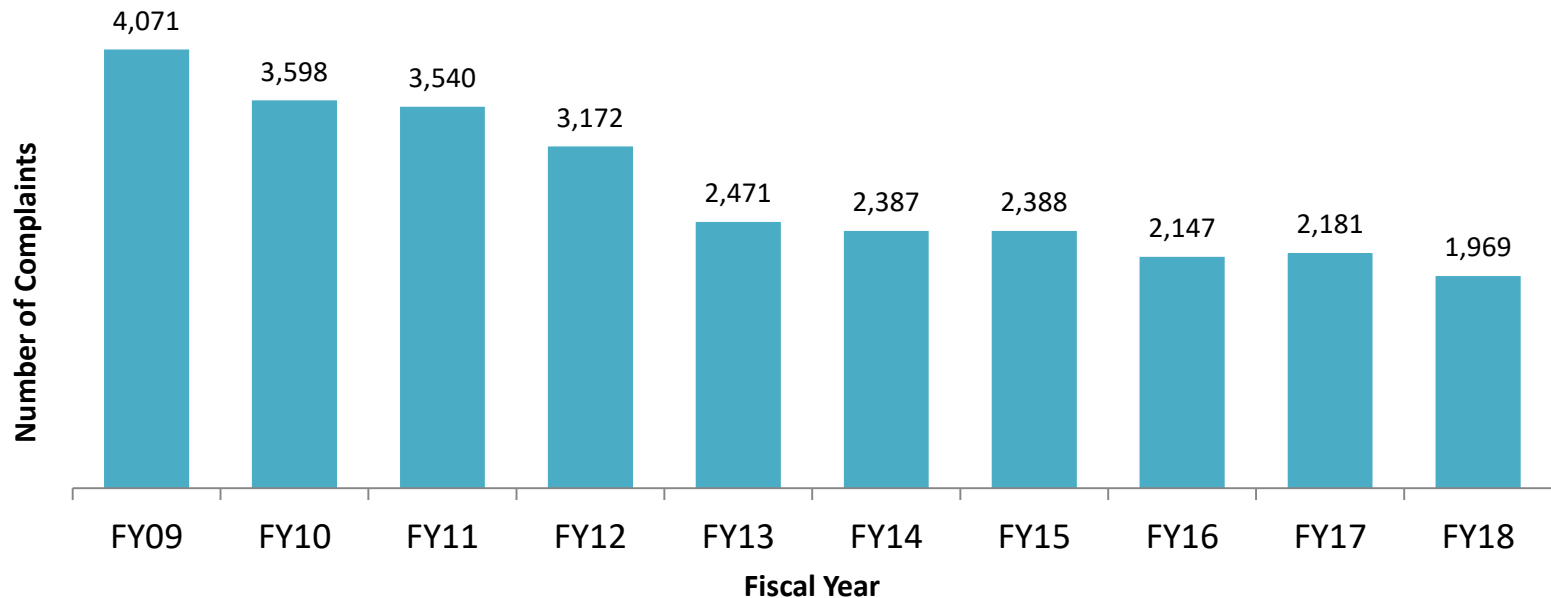


Western Region Juvenile Services Long Term Trends: Counties of Allegany, Frederick, Garrett and Washington

DJS Office of Research and Evaluation, January 2019

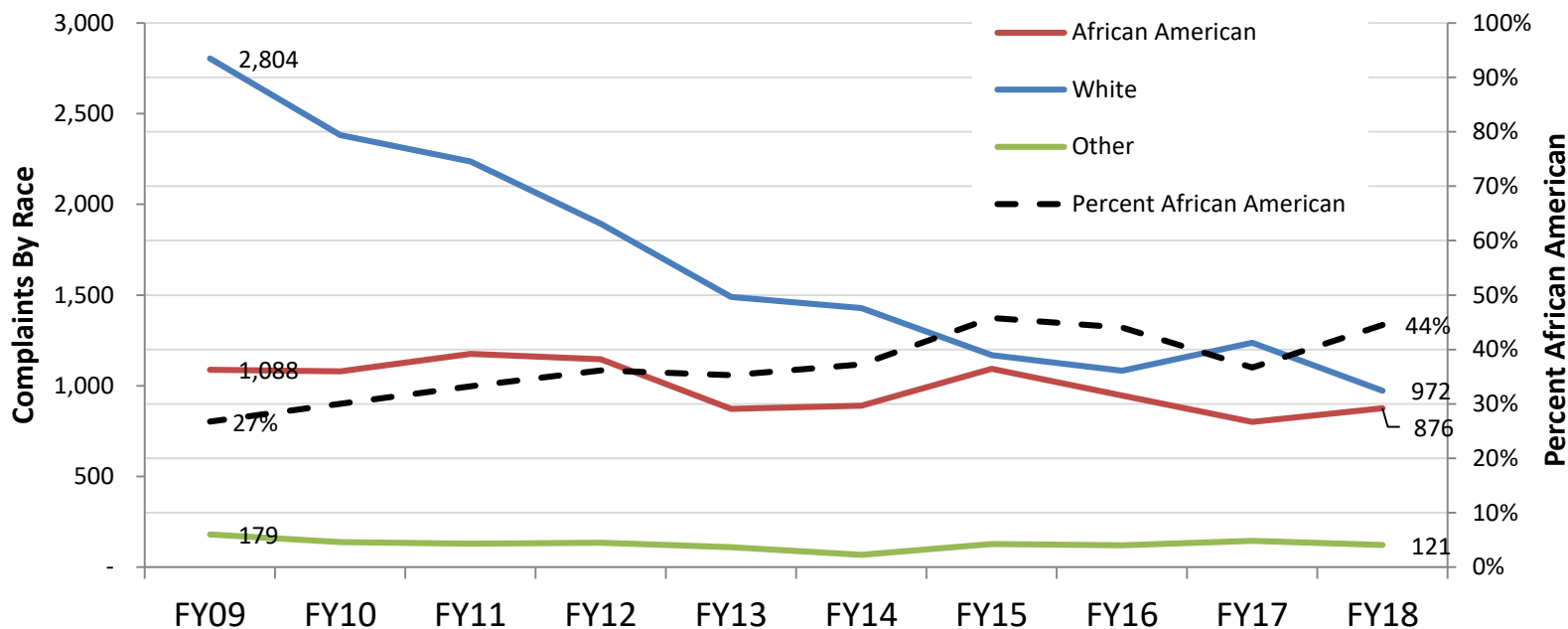
Western Region Juvenile Complaints Have Declined Significantly

- Western Region complaints referred to DJS Intake declined 51.6% in ten years.
- Statewide complaints declined 59.4% over the same period.



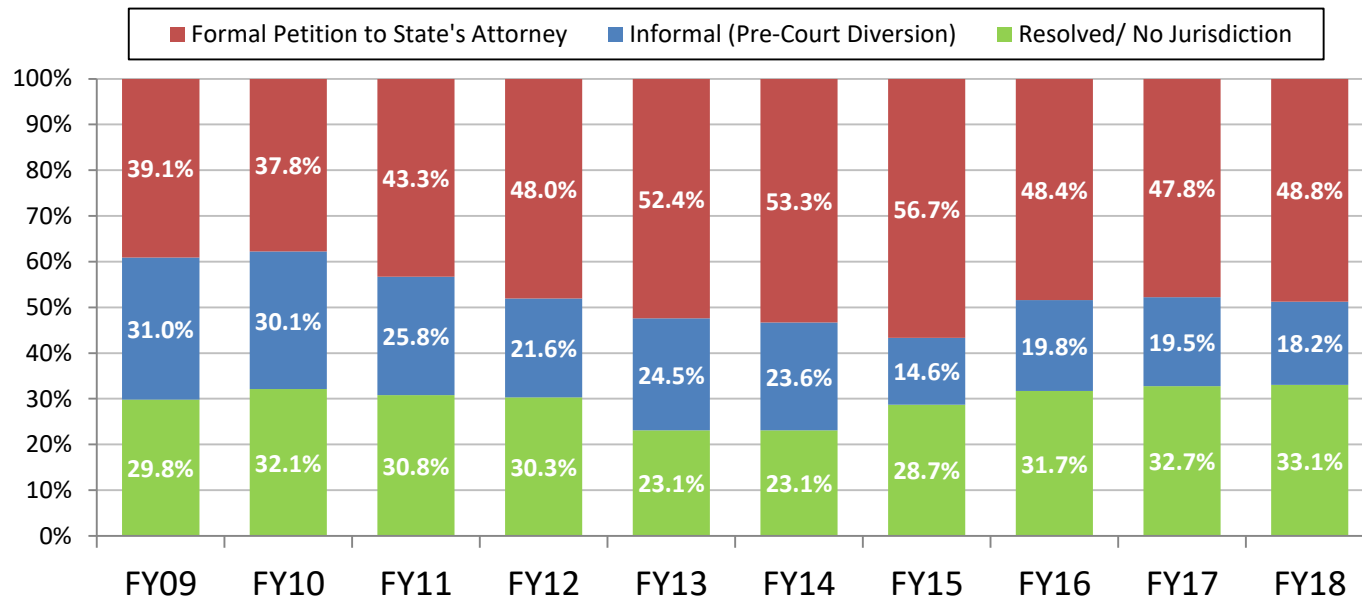
Juvenile Complaints in Western Region Have Declined for All Race/Ethnicities Since FY09

- Complaints for Western Region African American youth declined 19.5%, and increased 65.3% for white youth.
- African American youth comprise 44.5% of complaints.
- African American youth comprise 10.5% of the general population.



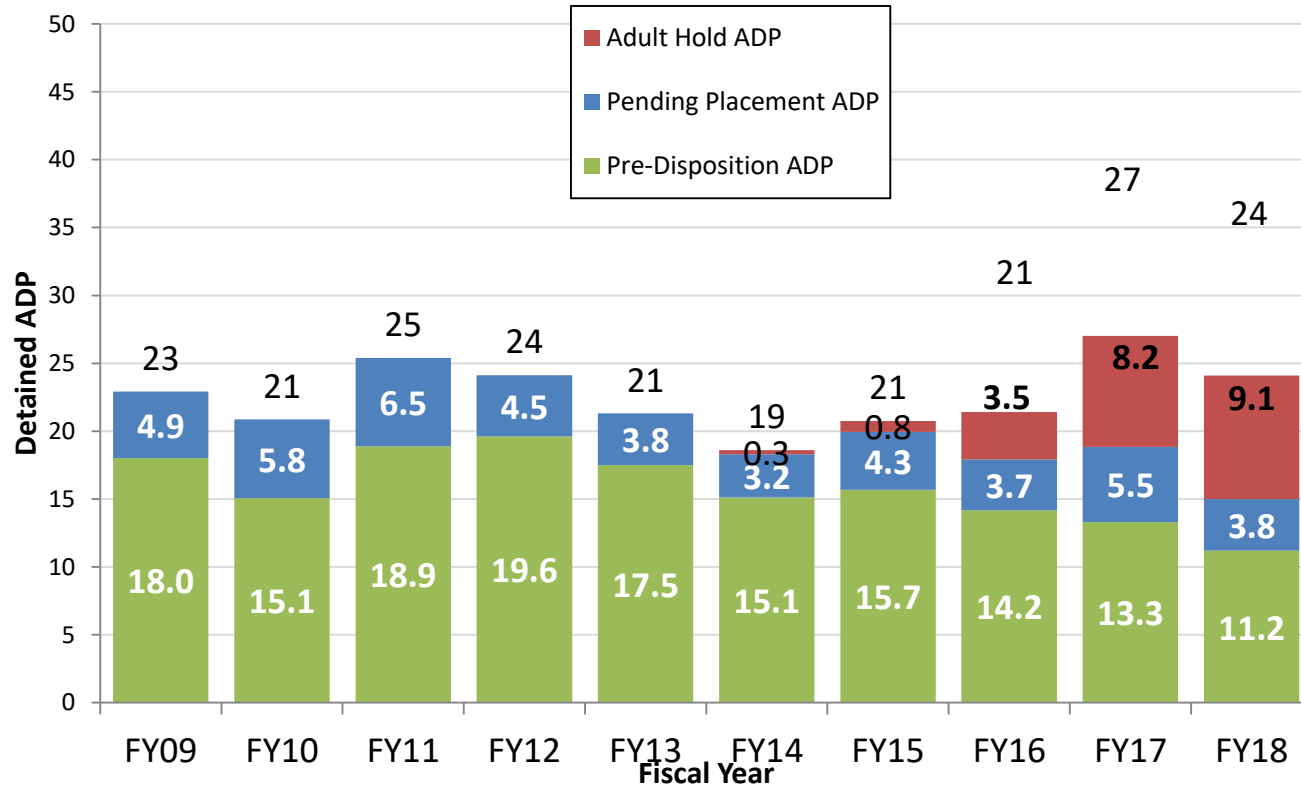
The Percent of Cases Referred to Juvenile Court by Western Region has Declined Over the Past Two Years

- 48.8% of Western Region complaints were referred to court by DJS Intake in FY18, 9.7% percentage point less than in FY09. Statewide 45.0% were referred to court.
- 18.2% of Western Region complaints were diverted to an informal DJS pre-court case. Statewide 15.2% were diverted.



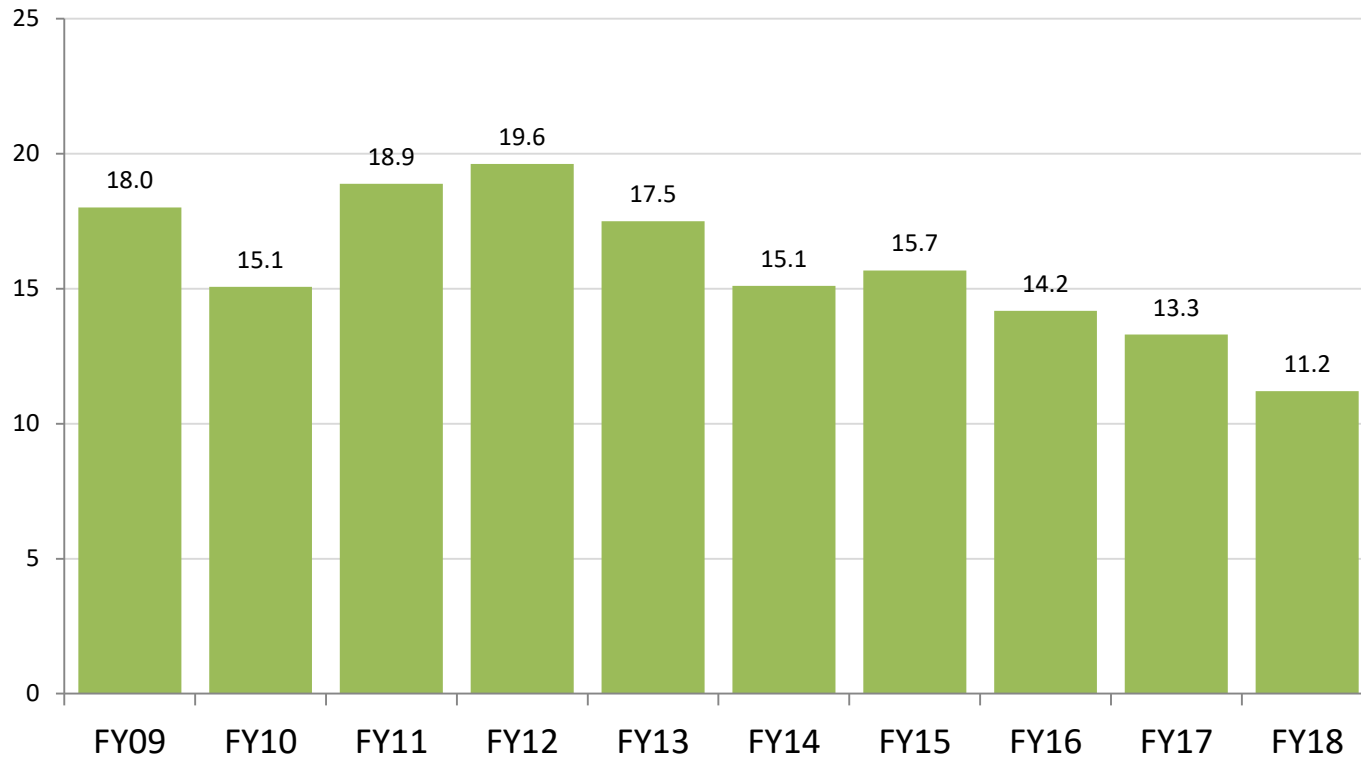
Western Region Detention Population Has Slightly Declined

- Western Region daily population in DJS detention increased 38% in ten years, to 24 in FY18. The statewide detention population declined 4% over the same period.
- Cases detained for the Adult Court now make up 37.9% of the DJS detained population in Western Region.



Western Region Youth Population In Detention Pre-Disposition Has Declined Significantly

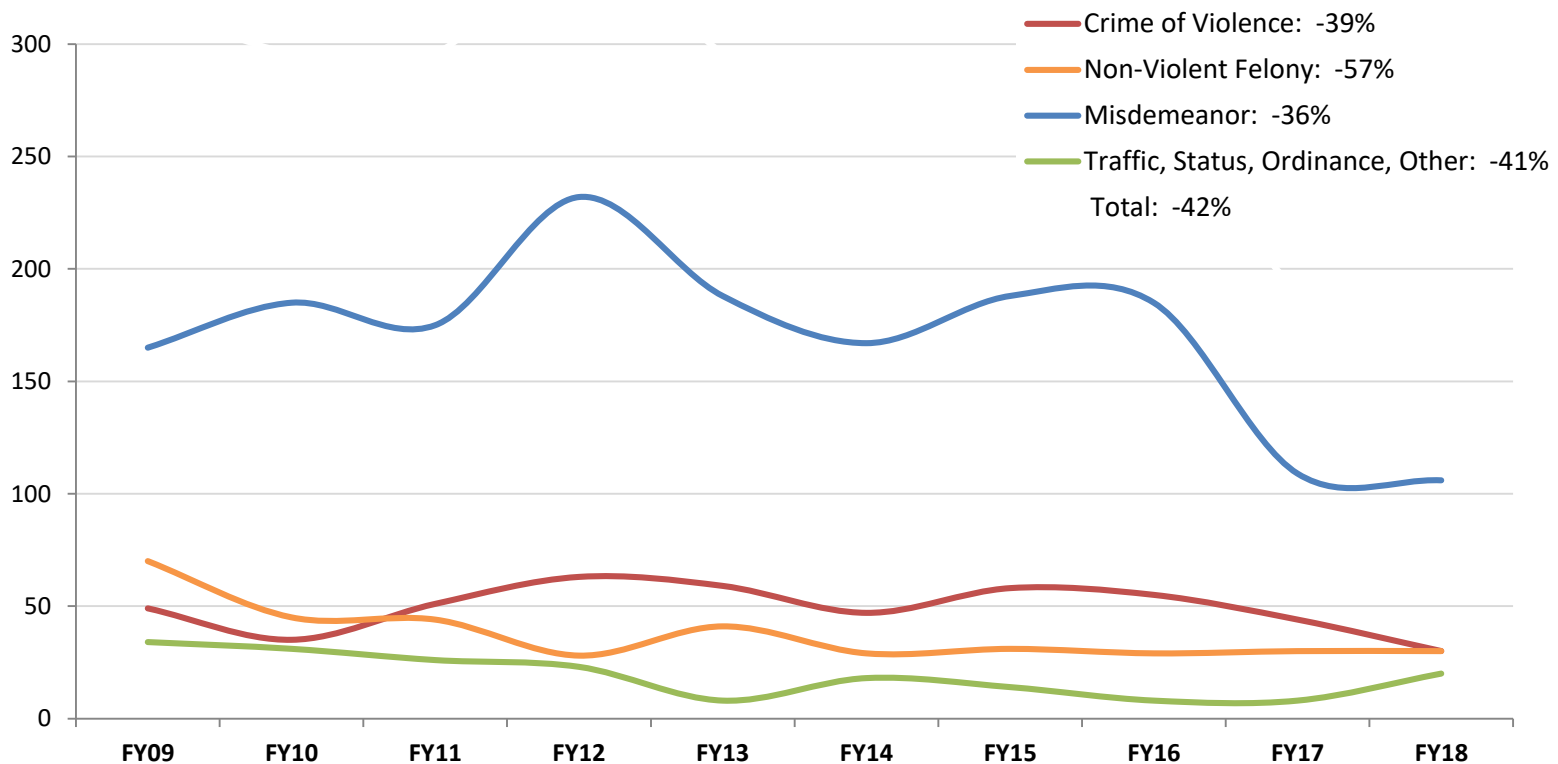
- The Western Region juvenile pre-dispositional detained population declined 37.8% in ten years to 11.2 youth in FY 2018.



Western Region Pre-Disposition Detention Placements Have Decreased for Most Complaint Types

- Youth detained pending disposition for misdemeanors has decreased 36% over ten years.
- Youth detained pending disposition for crimes of violence has decreased 39% over ten years.

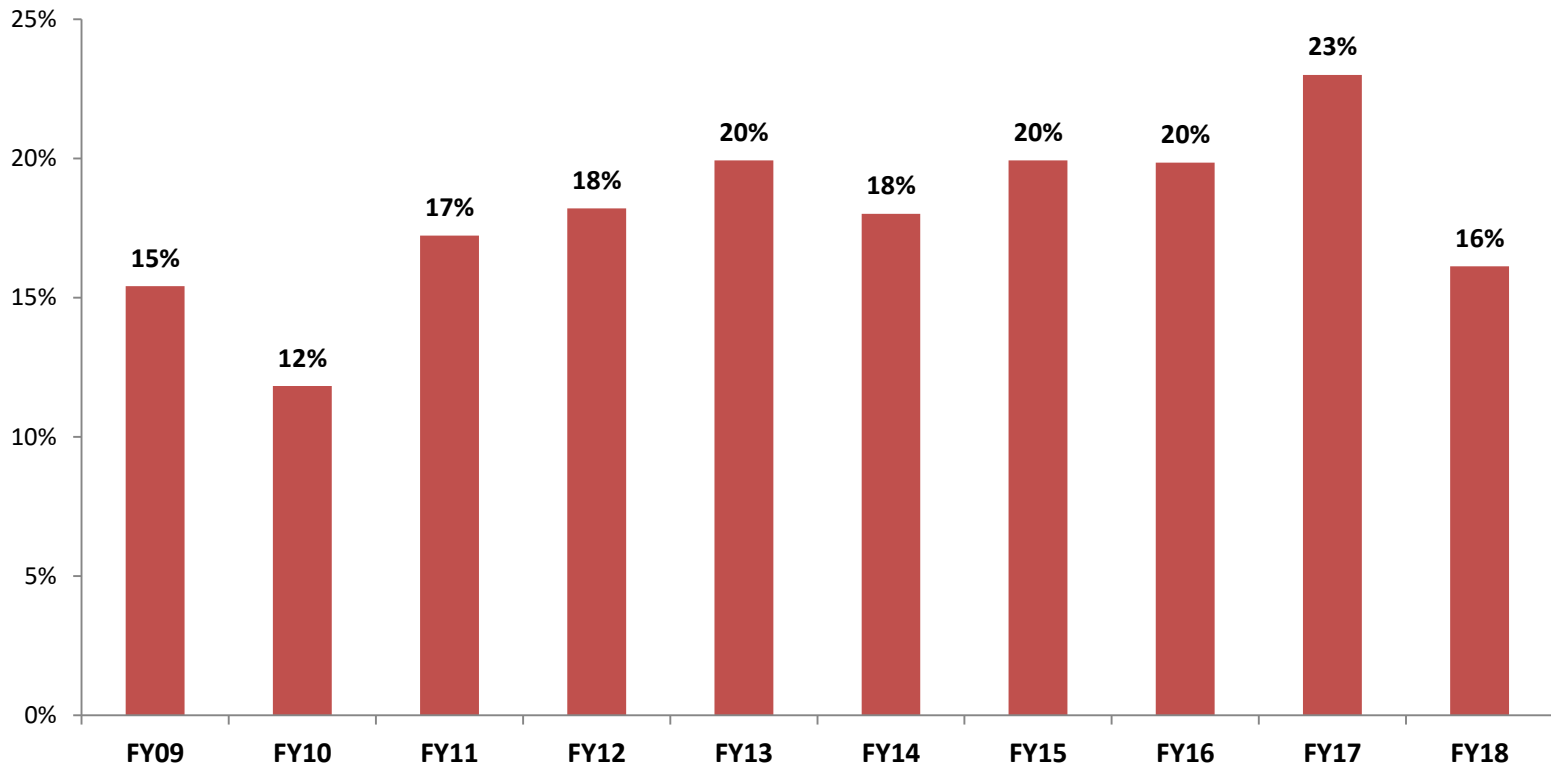
Pre-D Detention Admissions by Complaint Type, FY09 - FY18



Crimes of Violence Make Up an Increasing Proportion of Detention Placement Offenses

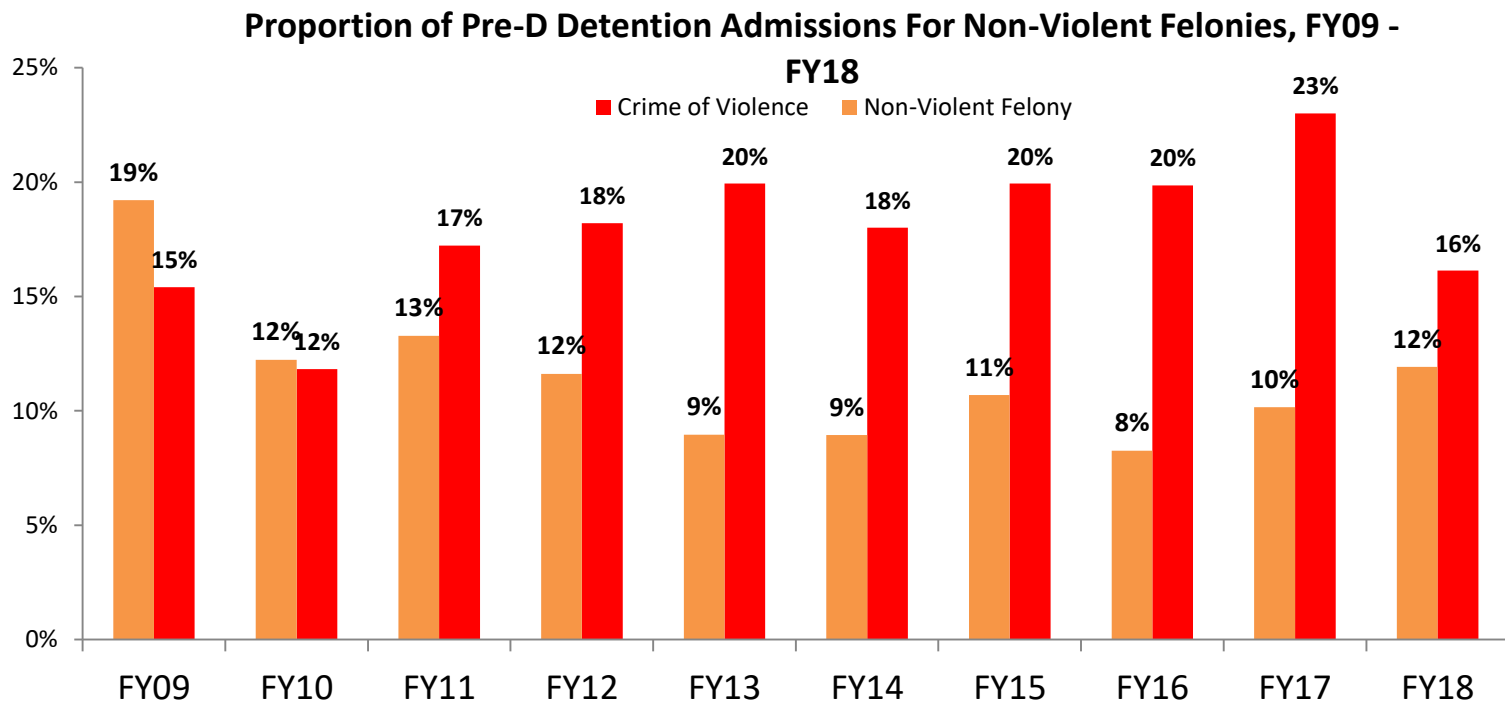
- The proportion of youth detained pre-disposition for Crimes of Violence complaints has increased 1 percentage points over ten years.

Proportion of Pre-D Detention Admissions For Crimes of Violence, FY09 - FY18



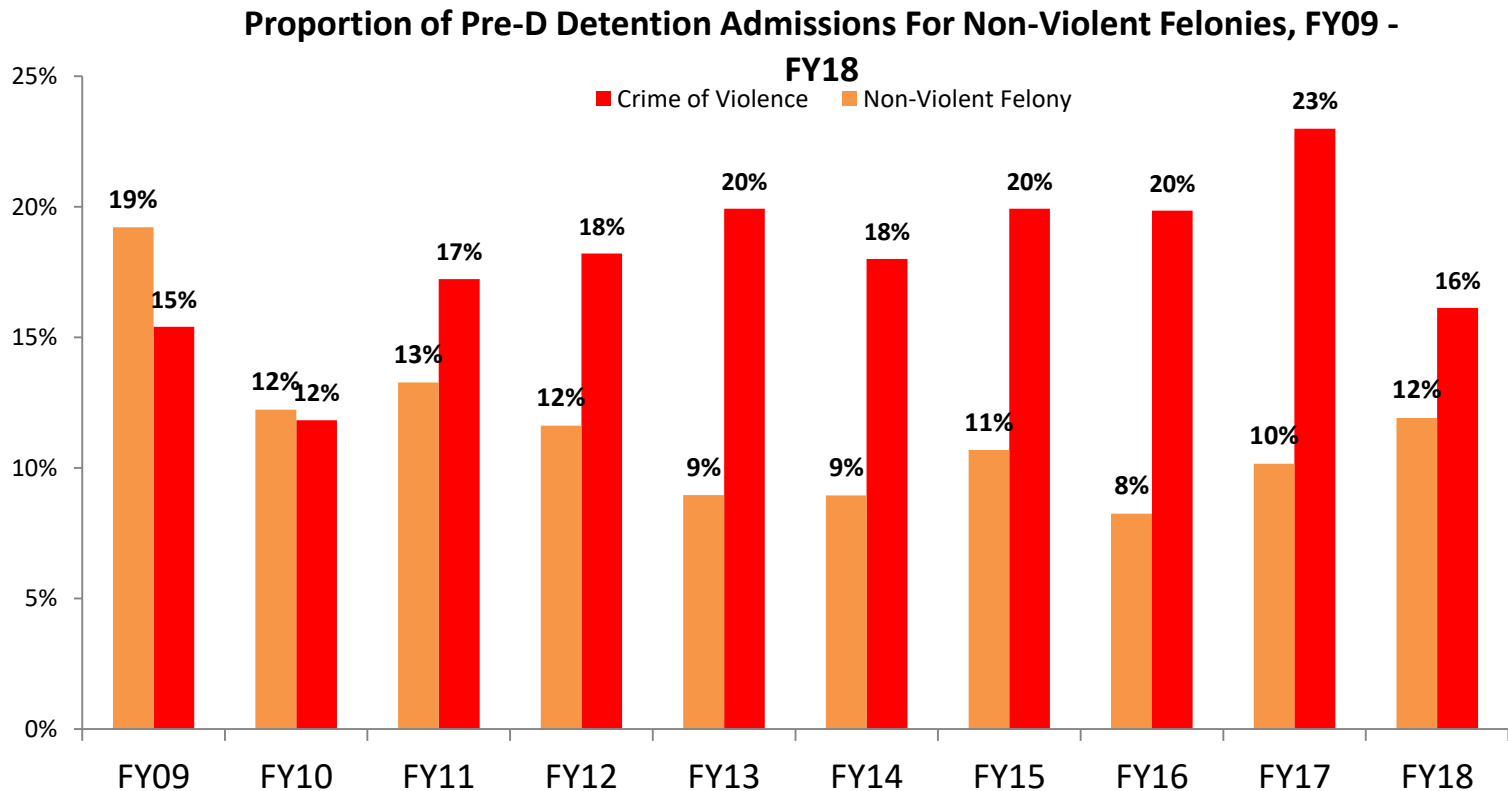
Detention Placement for Non-Violent Felonies are Declining

- The proportion of youth detained pre-disposition for Non-Violent Felony complaints has decreased 1 percentage points over ten years.
- The detained population is increasingly comprised of youth with violent crimes complaints.



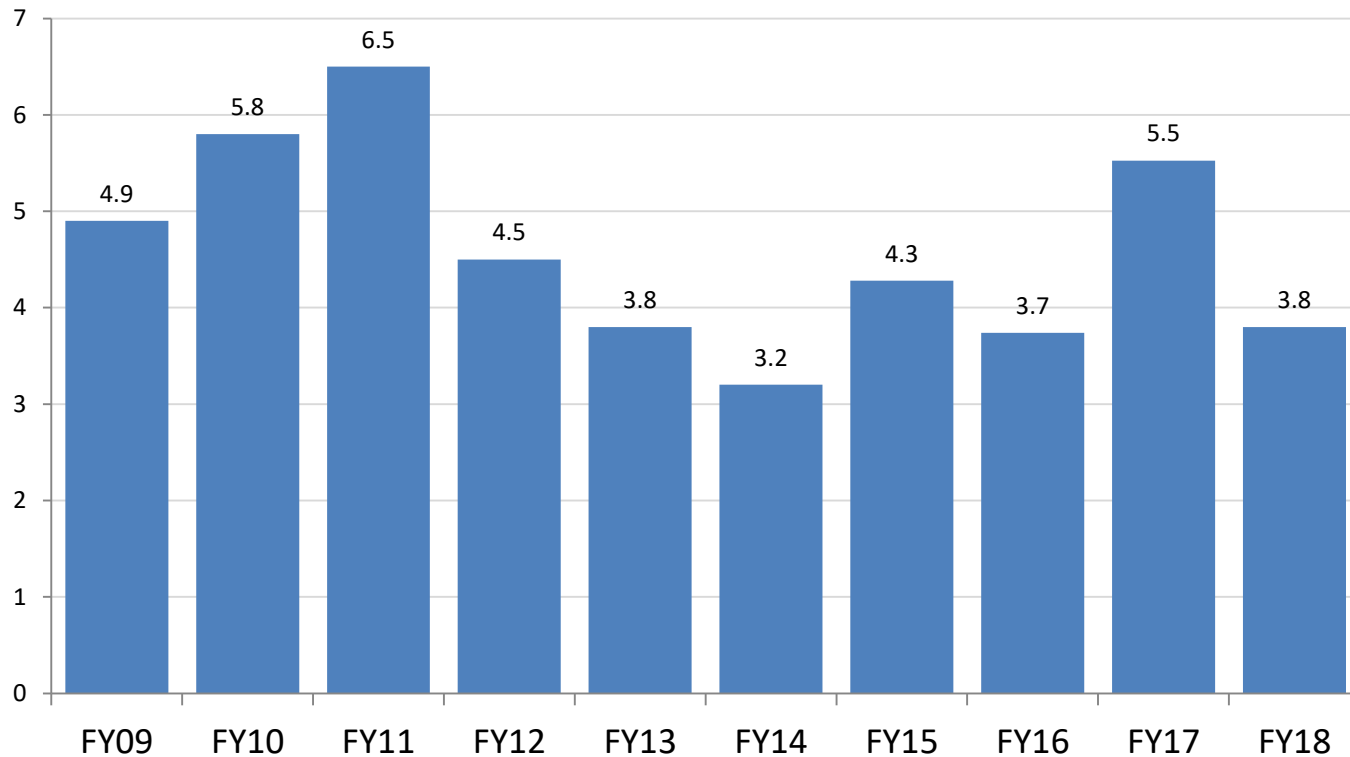
Western Region Pre-D Detention Population

- Youth detained pre-disposition for Crimes of Violence has decreased 7% from FY17 through FY18.
- Pre-disposition for non-violent felonies increased from 8% in FY16 through FY18 to 12%.



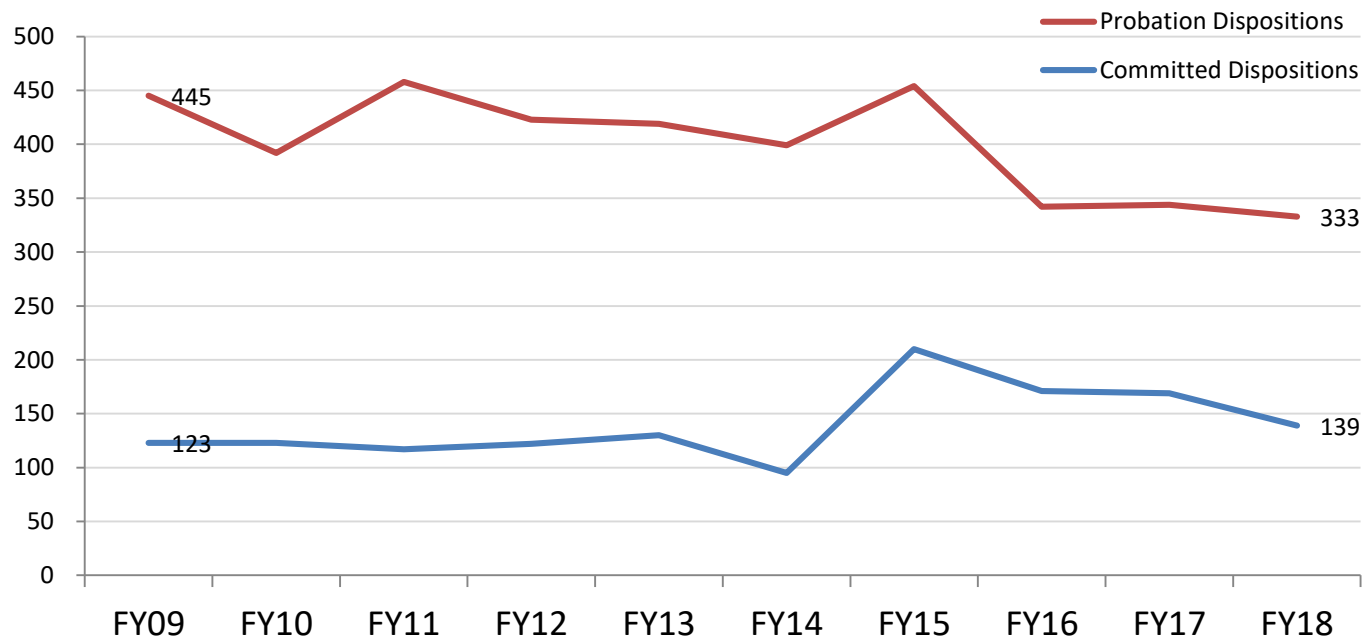
Western Region Youth In Detention Pending a Committed Placement Has Declined

- Juvenile court pending placement population increased 1.1% in ten years to 3.8 youth in FY 2018.



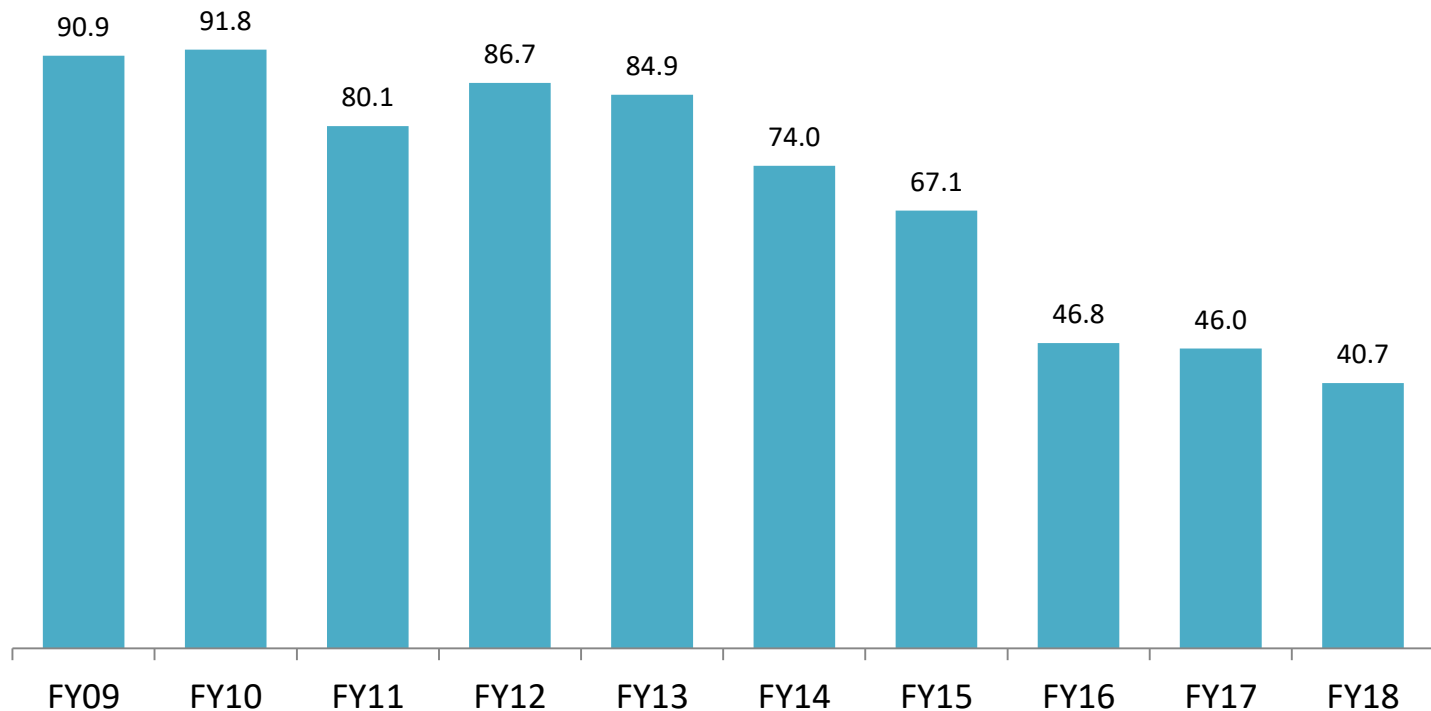
Juvenile Probation and Commitment Orders Have Declined

- Western Region Juvenile probation orders declined 25.1% in ten years. Statewide probation orders declined 54.2% over the same period.
- Western Region juvenile commitments increased 15.4% in ten years. Statewide commitments declined 34.0% over the same period.



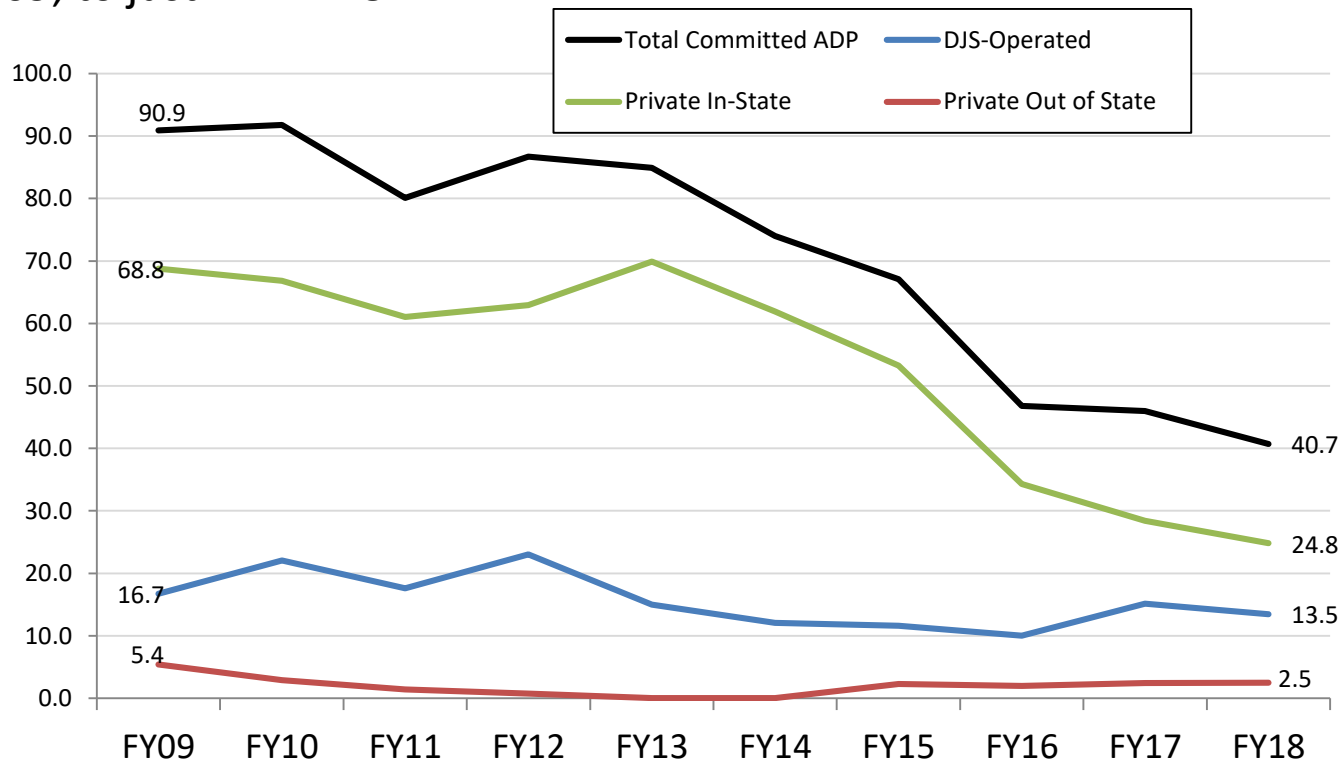
Average Committed Out of Home Population Has Declined Significantly in the Western Region

- The overall daily population of Western Region youth committed by the juvenile court to out of home placement declined 55.2% over ten years, from 90.9 in FY09 to 40.7 in FY18.
- Statewide average committed population increased to 54.2% over the same period.



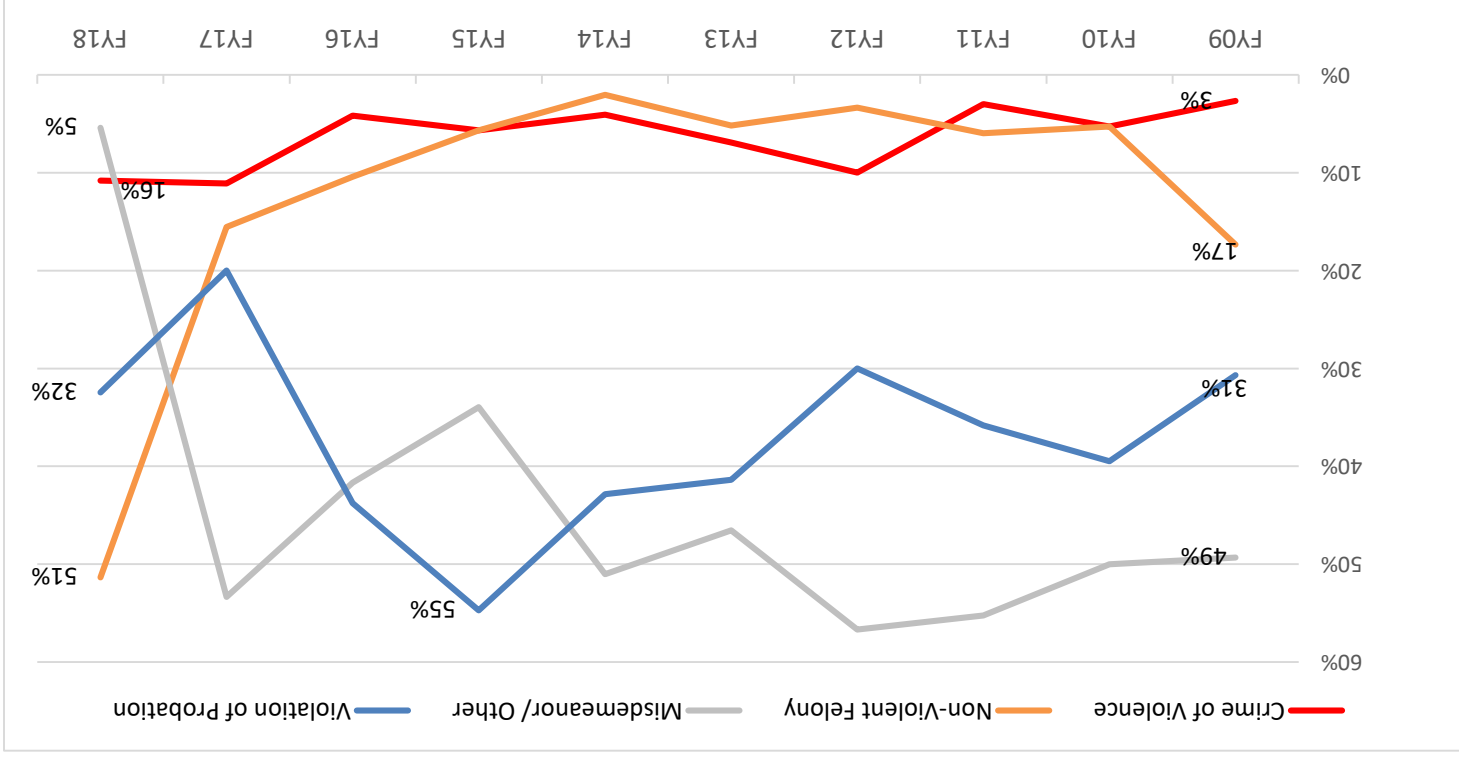
Western Region Committed Youth Population Has Declined

- Overall committed out-of-home population has declined 55.2% from 90.9 in FY09 to 40.7 in FY18.
- DJS-Operated ADP decreased 19.1%, and Private In-State has declined 63.9% since FY09.
- Out of State committed average population declined from the high of 5 youth in FY09, to just 2 in FY18.



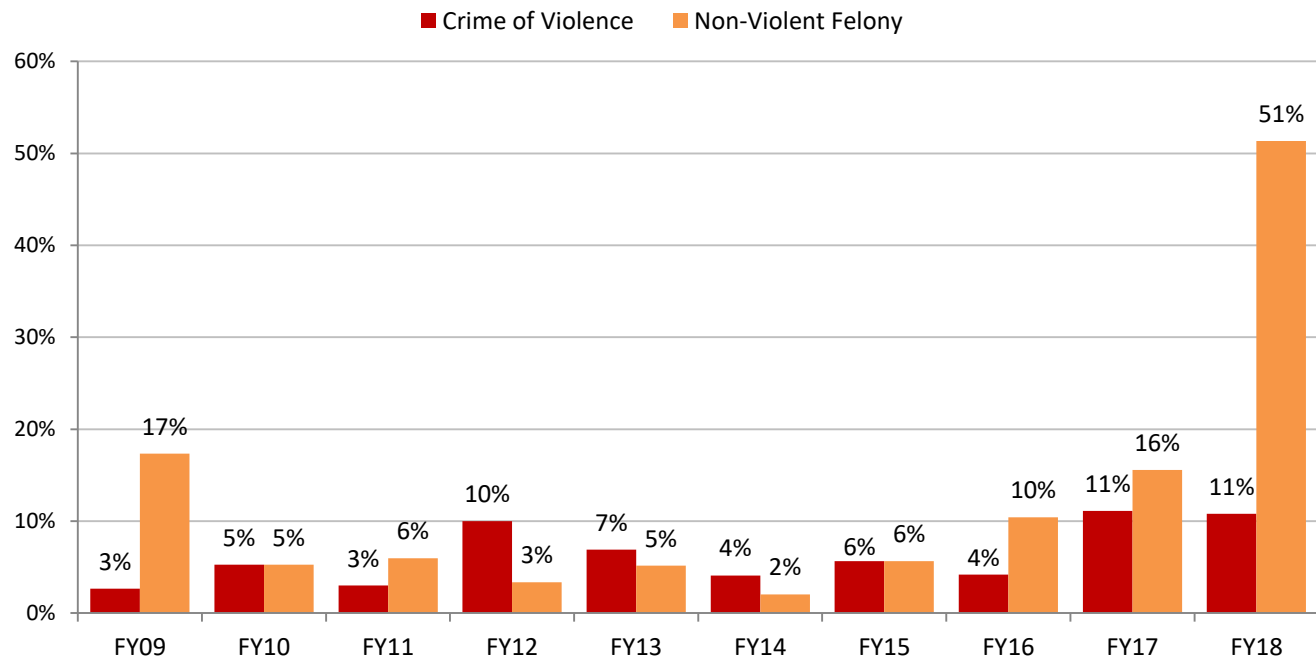
The Rate of Juveniles Committed for Low-Level Offenses Has Declined

- The proportion of new commitments for misdemeanors has decreased from 49% percentage points in FY 2009 to 5% percentage points in FY 18 and other low-level offenses increased over ten years.
- The proportion of new commitments for violations of probation had peaked at 55% percentage points in FY 15, and begun to decline over few last years.



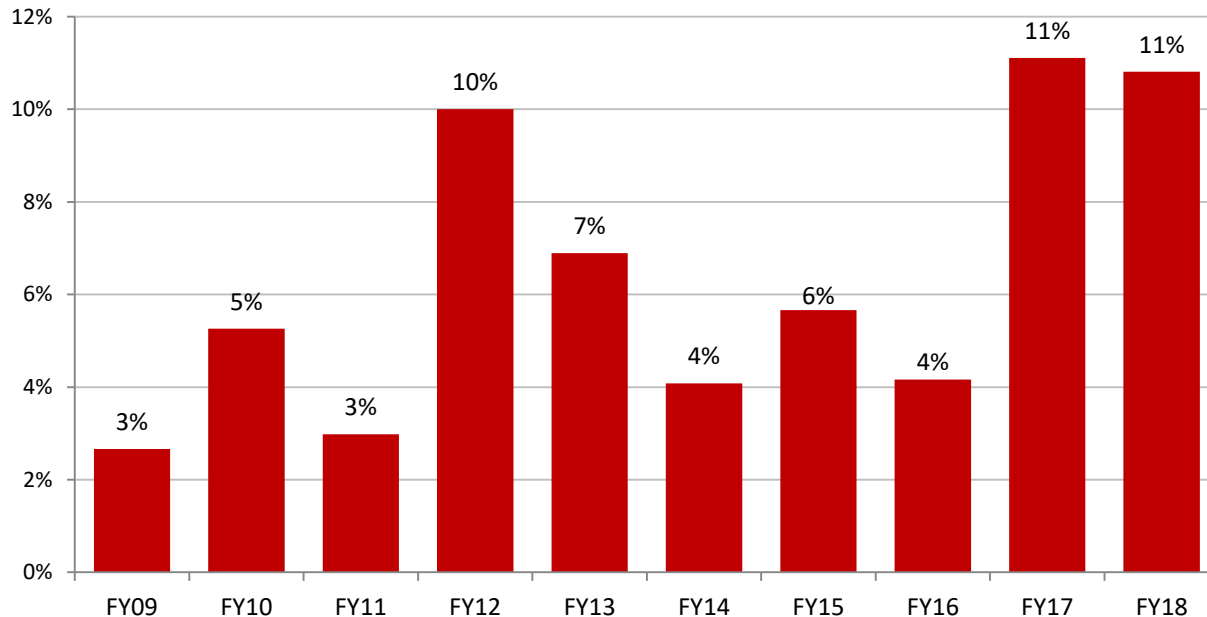
The Rate of Juveniles Committed for Crimes of Violence has Decreased in the Western Region

- Crimes of Violence make up less than 11% of new commitments in FY 2018.
- The rate of juveniles committed for Non-Violent Felonies increased 35% in the last year.



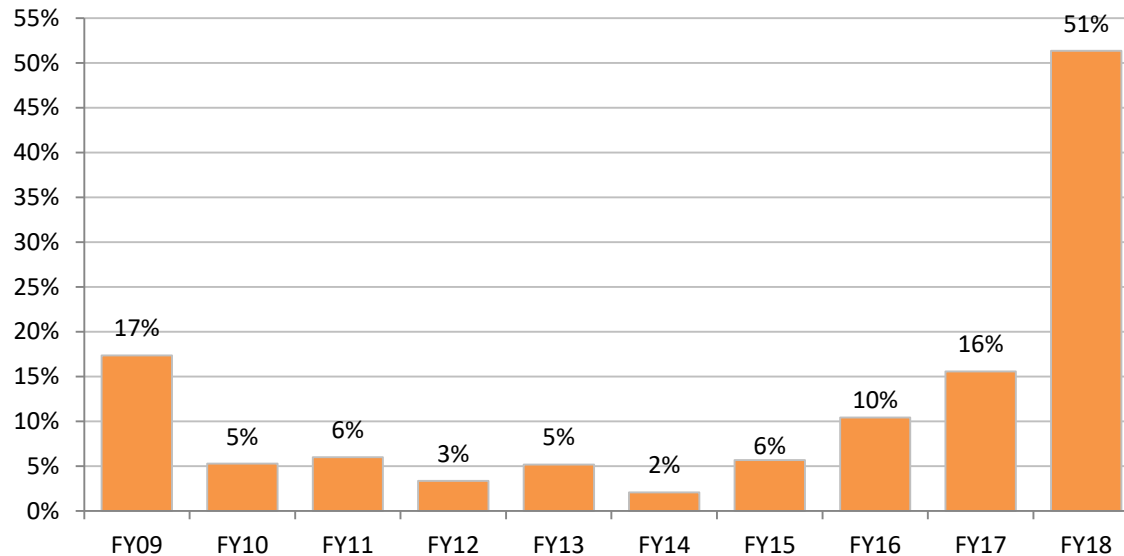
The Rate of Juveniles Committed for Crimes of Violence has remain stable in the Western Region

- Crimes of Violence make up 11% of new commitments in FY 2018 in the Western Region.



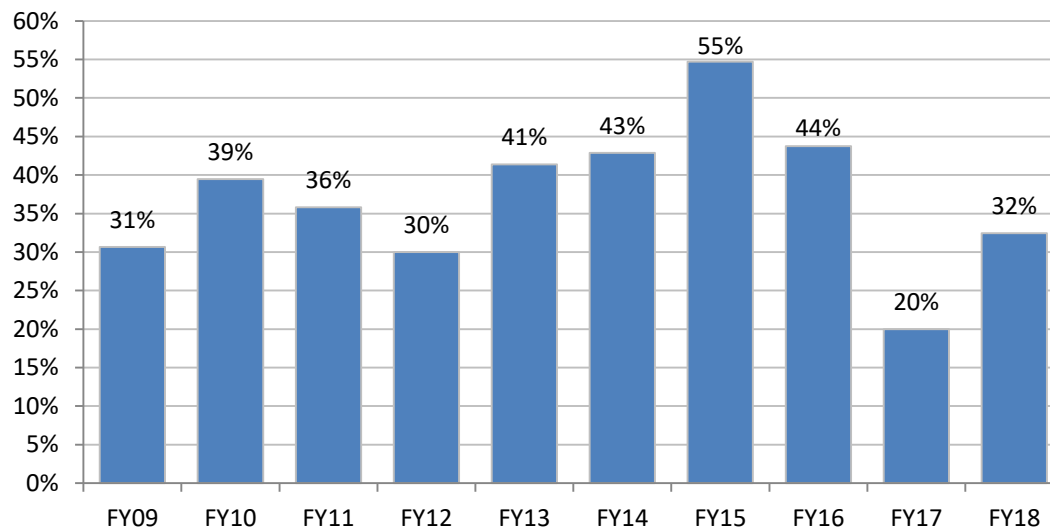
The Rate of Juveniles Committed for Non-Violent Felonies has Increased in Western Region

- Non-violent felonies has increased 49 percentage point since FY2014 from 2% to 51% in FY2018.



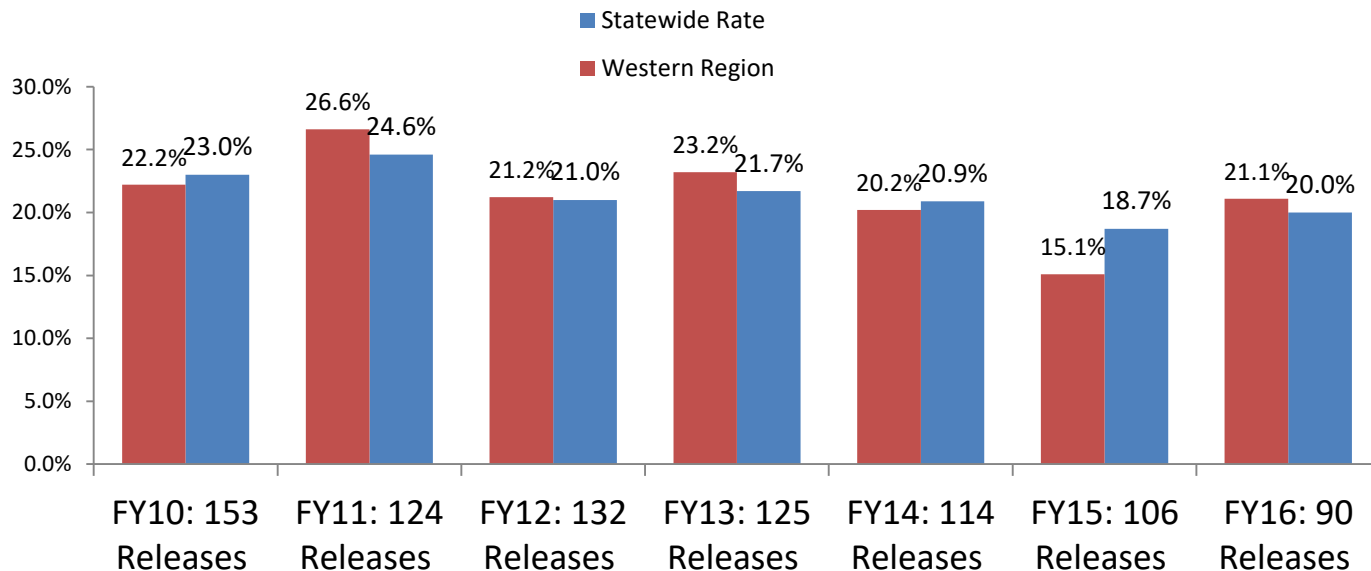
The Rate of Juveniles Committed for Violations of Probation has Declined in the Western Region

- After increasing 24 percentage points from FY 2009 through FY 2015, the rate of new commitments for Violations of Probation has decreased 23 percentage points to 32% in FY 2018.



Recidivism Rates for Western Region DJS Committed Youth Have Declined in Recent Years

- 21.1% of Western Region youth released from committed placement in FY16 had a new offense within a year that resulted in a delinquent adjudication or criminal conviction, an increase of 6 percentage points from FY15.
- The Statewide rate was 20.0% in FY16, down 1.3 points from FY15.



Recidivism Rates for Western Region DJS Probation Youth Have Increased in The Past Year

- 15.0% of Western Region youth placed on probation for the first time in FY16 had a new offense within a year that resulted in a delinquent adjudication or criminal conviction, a decrease of 7.2 percentage points from FY15.
- The Statewide rate was 16.5% in FY16, down 1.7 percentage points from FY15.

