

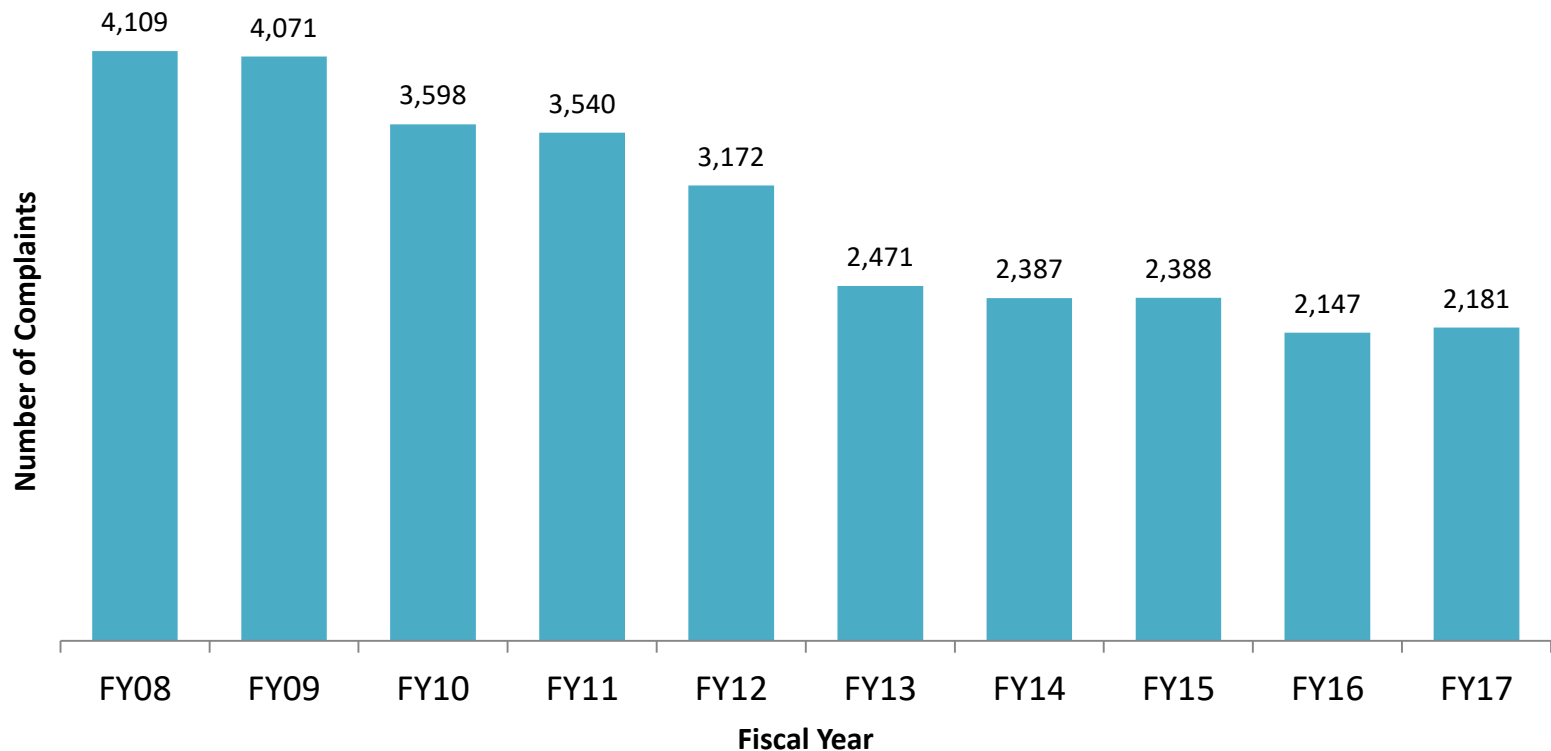


Western Region Juvenile Services Long Term Trends: Counties of Allegany, Frederick, Garrett and Washington

DJS Office of Research and Evaluation, January 2018

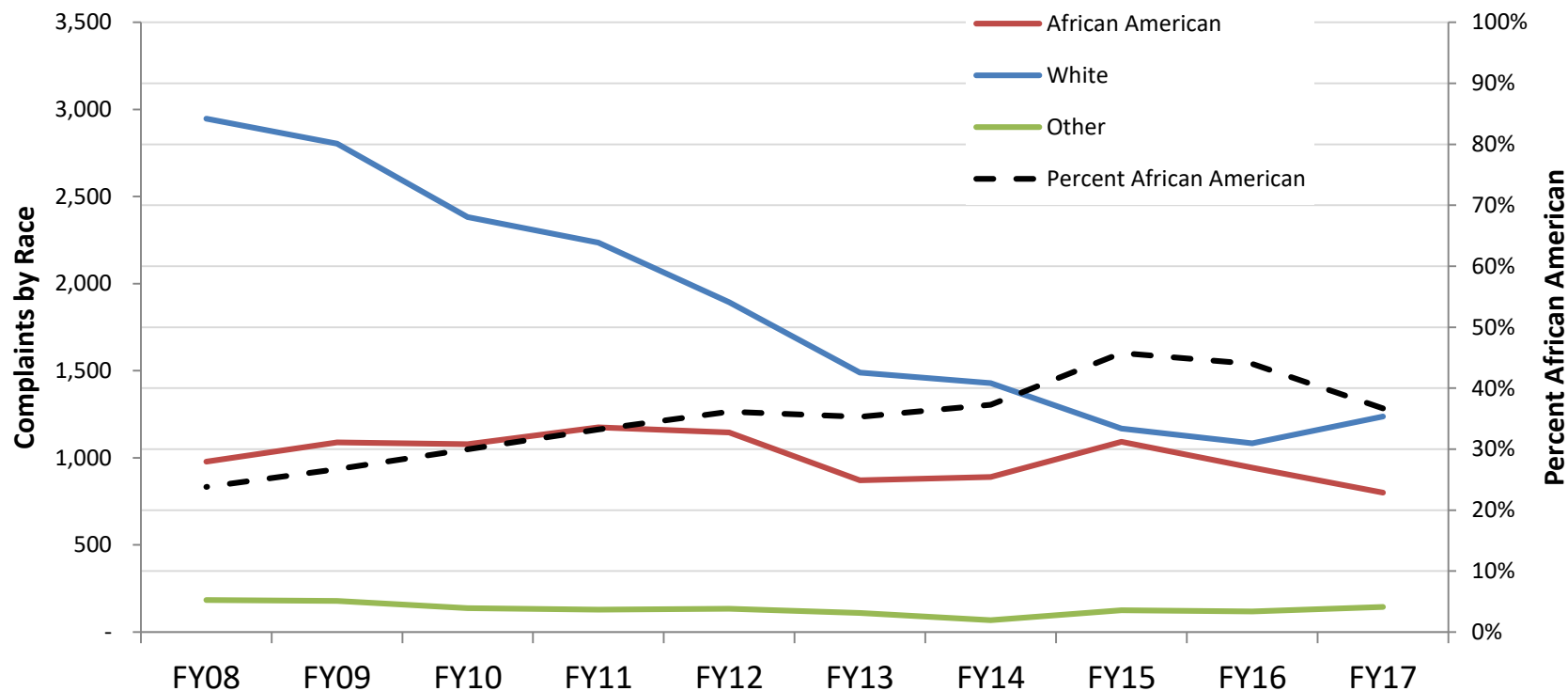
Western Region Juvenile Complaints Have Declined Significantly

- Western Region complaints referred to DJS Intake declined 46.9% in ten years.
- Statewide complaints declined 57.9% over the same period.



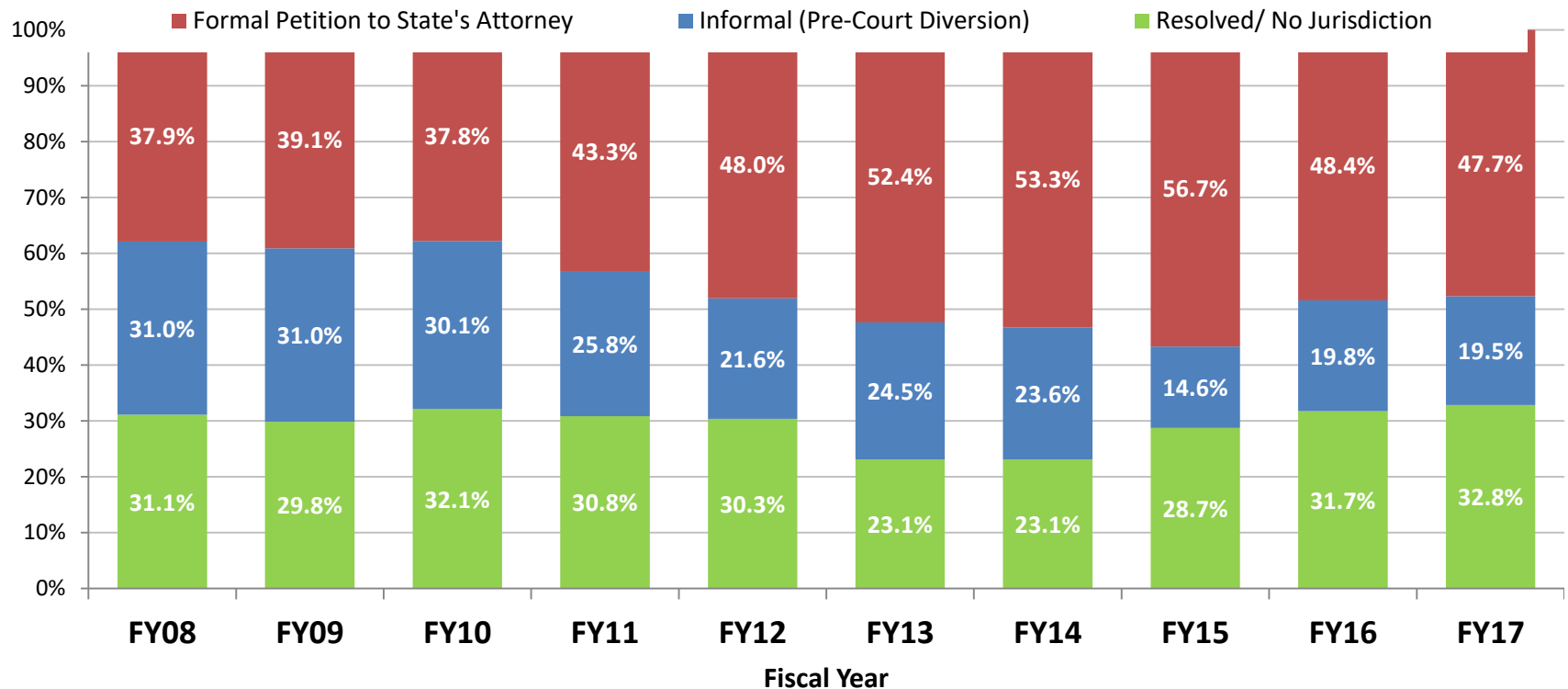
Juvenile Complaints in Western Region Have Declined for All Race/Ethnicities Since FY07

- Complaints for Western Region African American youth declined 18.2%, and declined 58.0% for white youth.
- African American youth comprise 37% of complaints.
- African American youth comprise 10.2% of the general population.



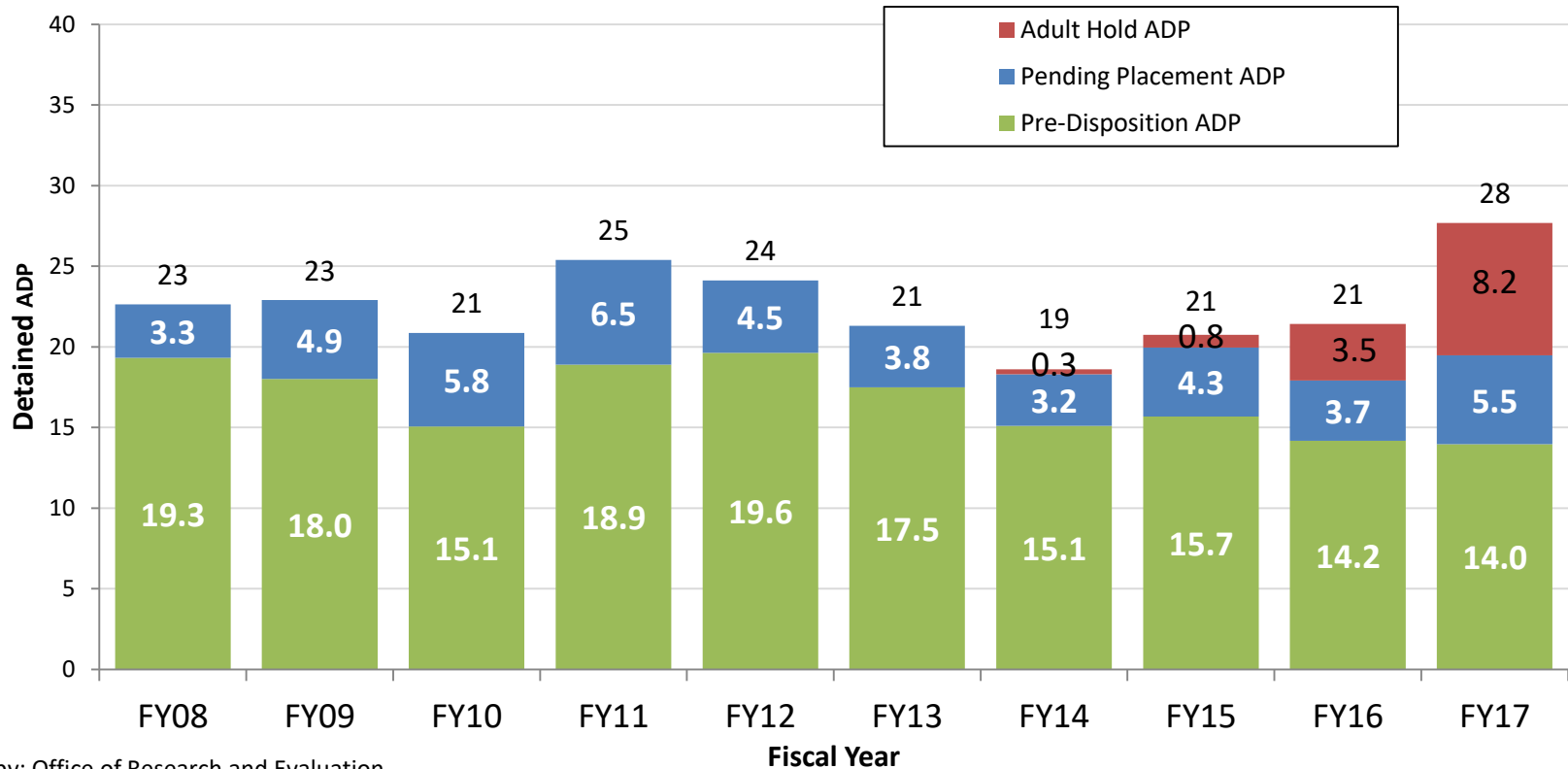
The Percent of Cases Referred to Juvenile Court by Western Region has Declined Over the Past Two Years

- 47.7% of Western Region complaints were referred to court by DJS Intake in FY17, 9.8% less than in FY08. Statewide 46.7% were referred to court.
- 19.5% of Western Region complaints were diverted to an informal DJS pre-court case. Statewide 14.6% were diverted.



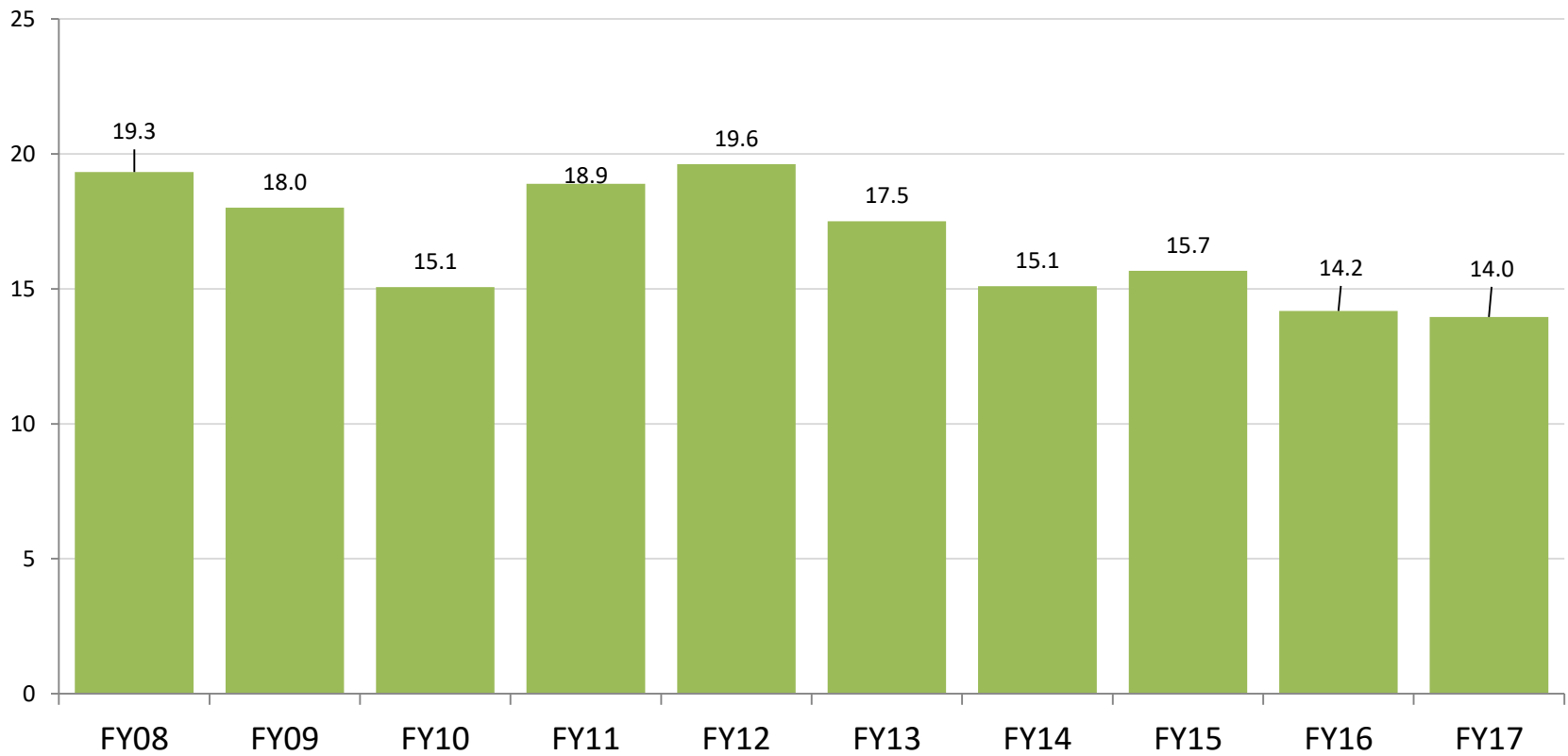
Western Region Detention Population Has Slightly Declined

- Western Region daily population in DJS detention increased 21.7% in ten years, to 28 in FY17. The statewide detention population declined 27.7% over the same period.
- Cases detained for the Adult Court now make up 29.3% of the DJS detained population in Western Region.



Western Region Youth Population In Detention Pre-Disposition Has Declined Significantly

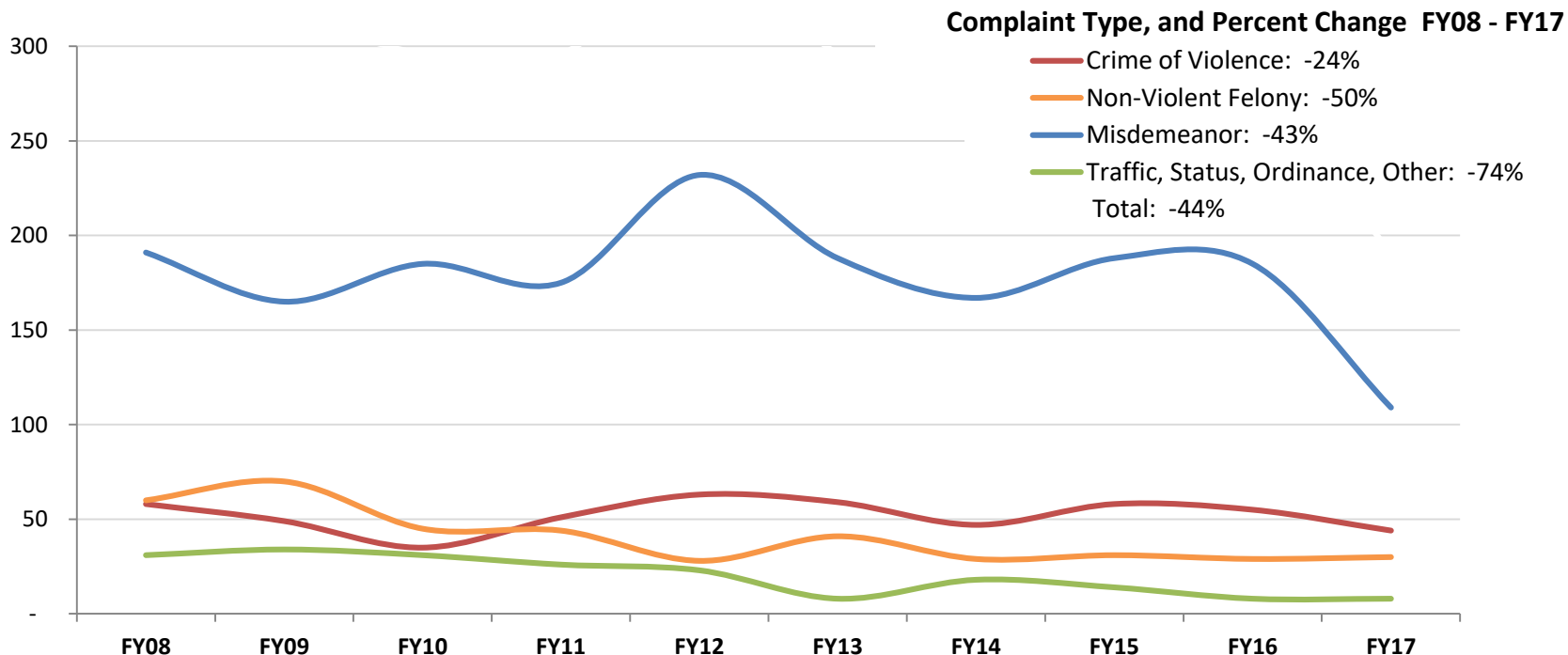
- The Western Region juvenile pre-dispositional detained population declined 27.5% in ten years to 14 youth in FY 2017.



Western Region Pre-Disposition Detention Placements Have Decreased for Most Complaint Types

- Youth detained pending disposition for misdemeanors has decreased 42.9% over ten years.
- Youth detained pending disposition for crimes of violence has decreased 24.1% over ten years.

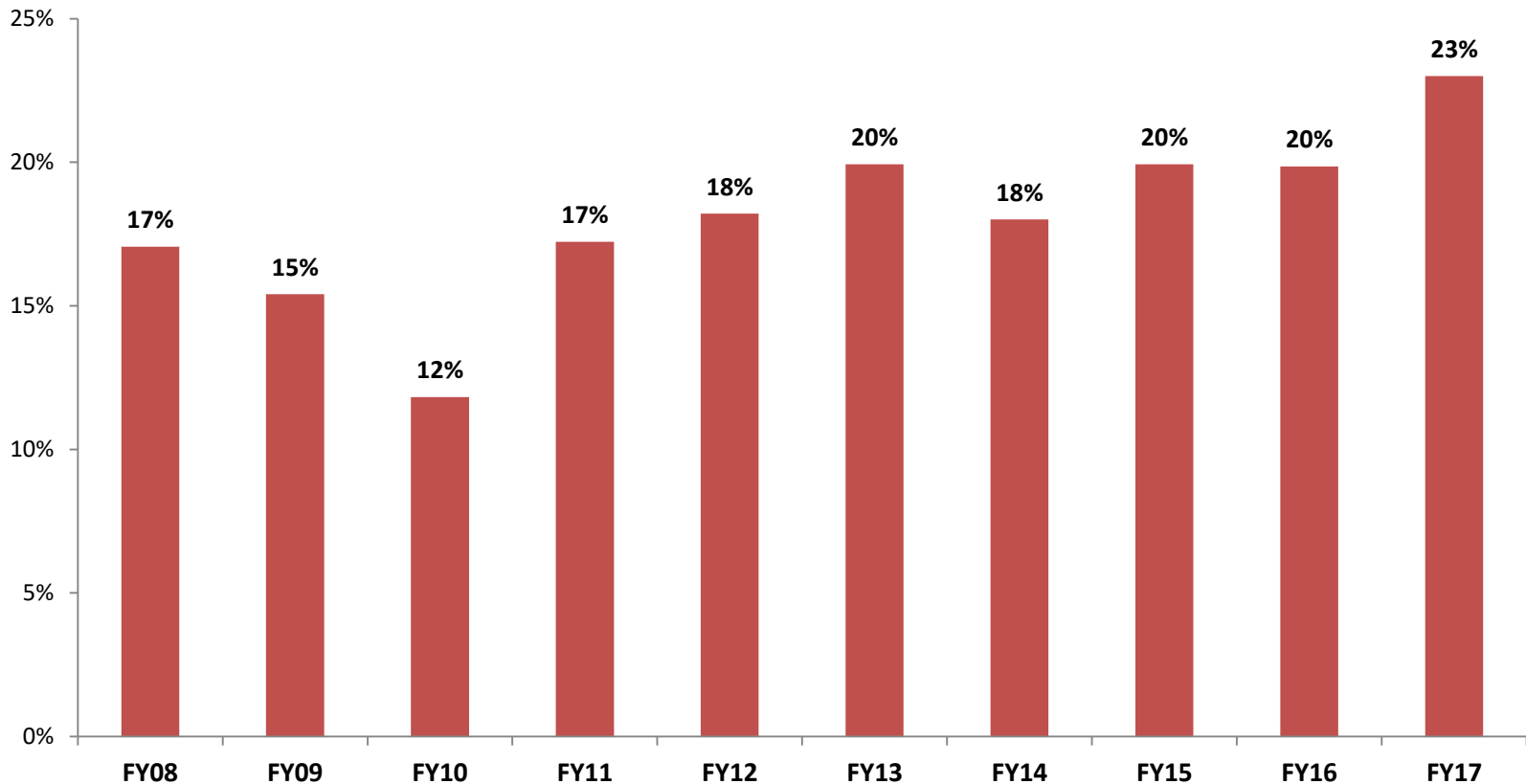
Pre-D Detention Admissions by Complaint Type, FY08 - FY17



Crimes of Violence Make Up an Increasing Proportion of Detention Placement Offenses

- The proportion of youth detained pre-disposition for Crimes of Violence complaints has increased 6 percentage points over ten years.

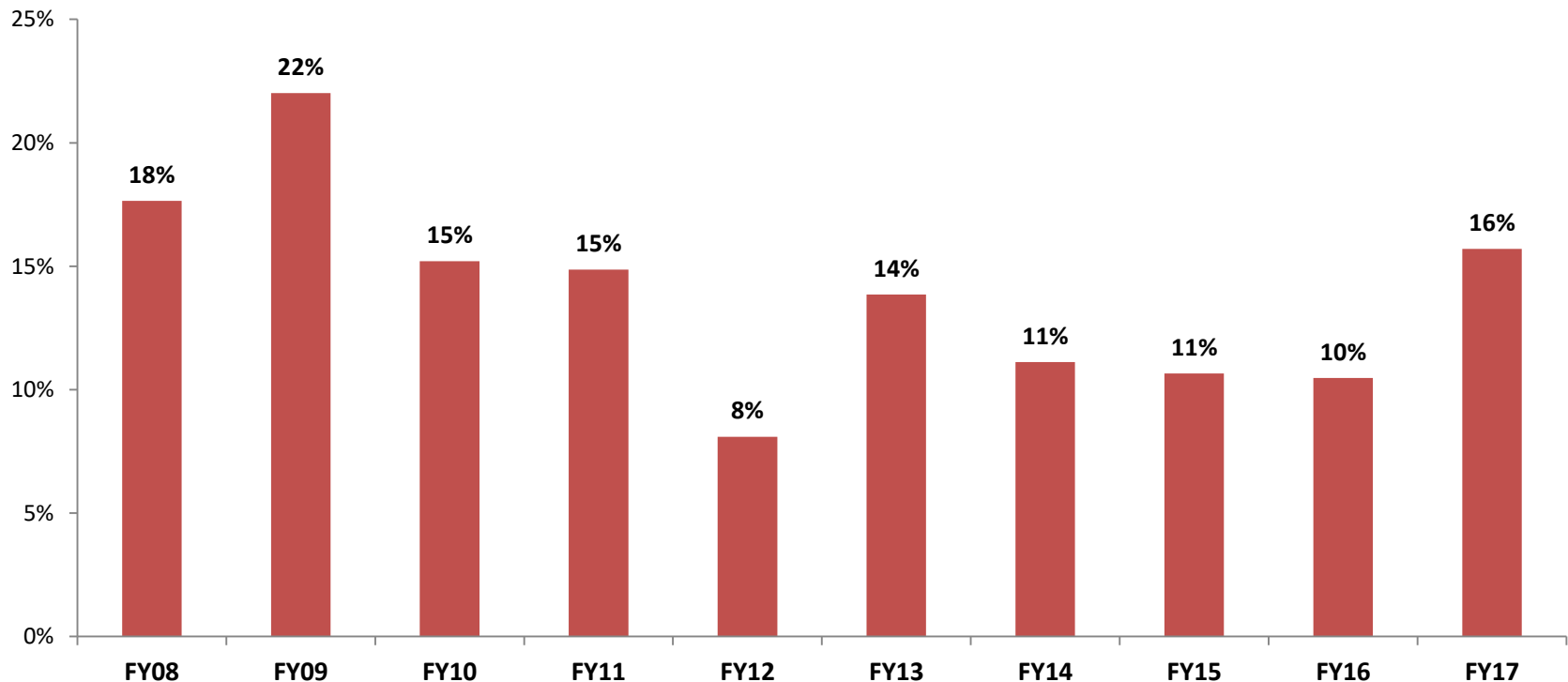
Proportion of Pre-D Detention Admissions For Crimes of Violence, FY08 - FY17



Detention Placement for Non-Violent Felonies are Declining

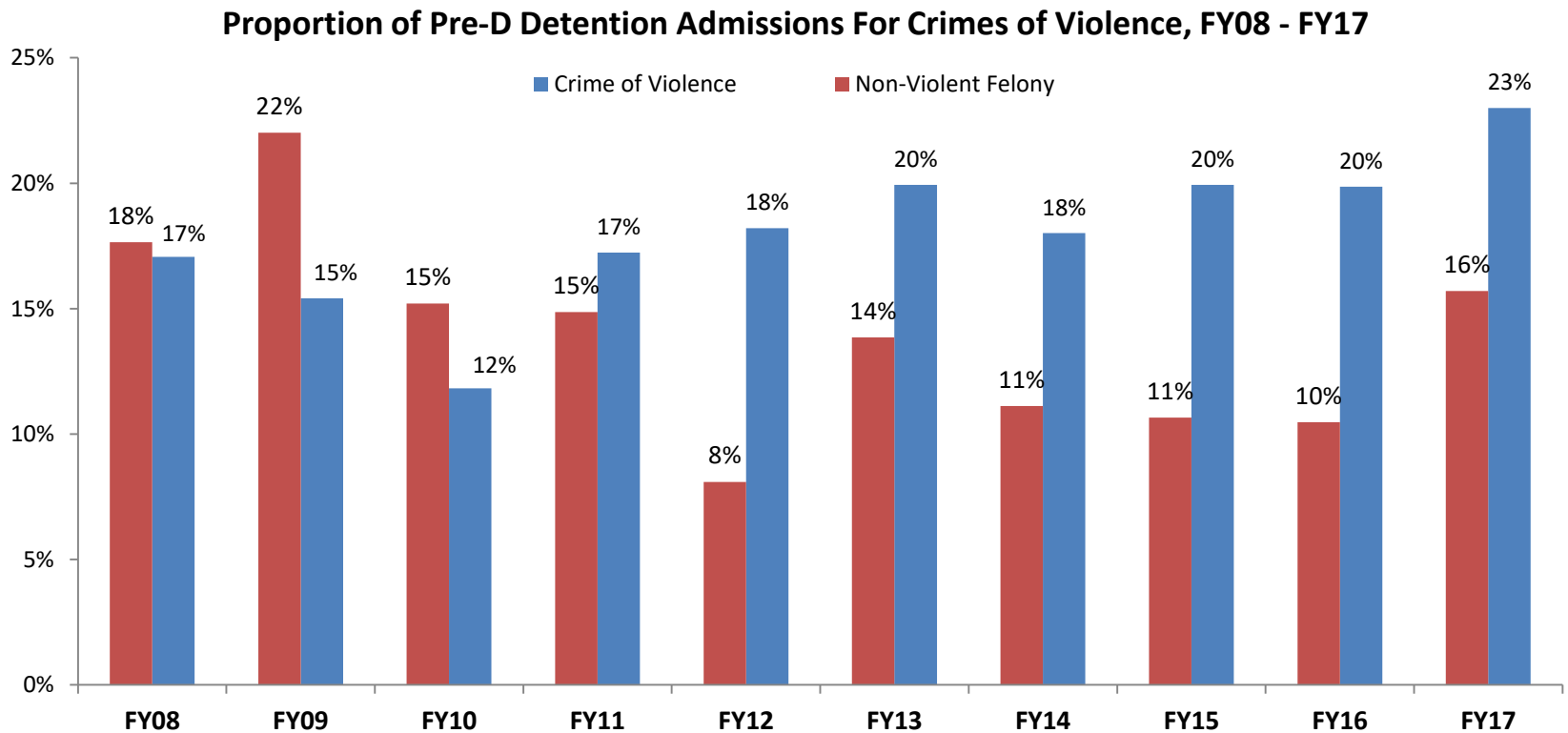
- The proportion of youth detained pre-disposition for Non-Violent Felony complaints has decreased 2 percentage points over ten years.
- The detained population is increasingly comprised of youth with violent crimes complaints.

Proportion of Pre-D Detention Admissions For Crimes of Violence, FY08 - FY17



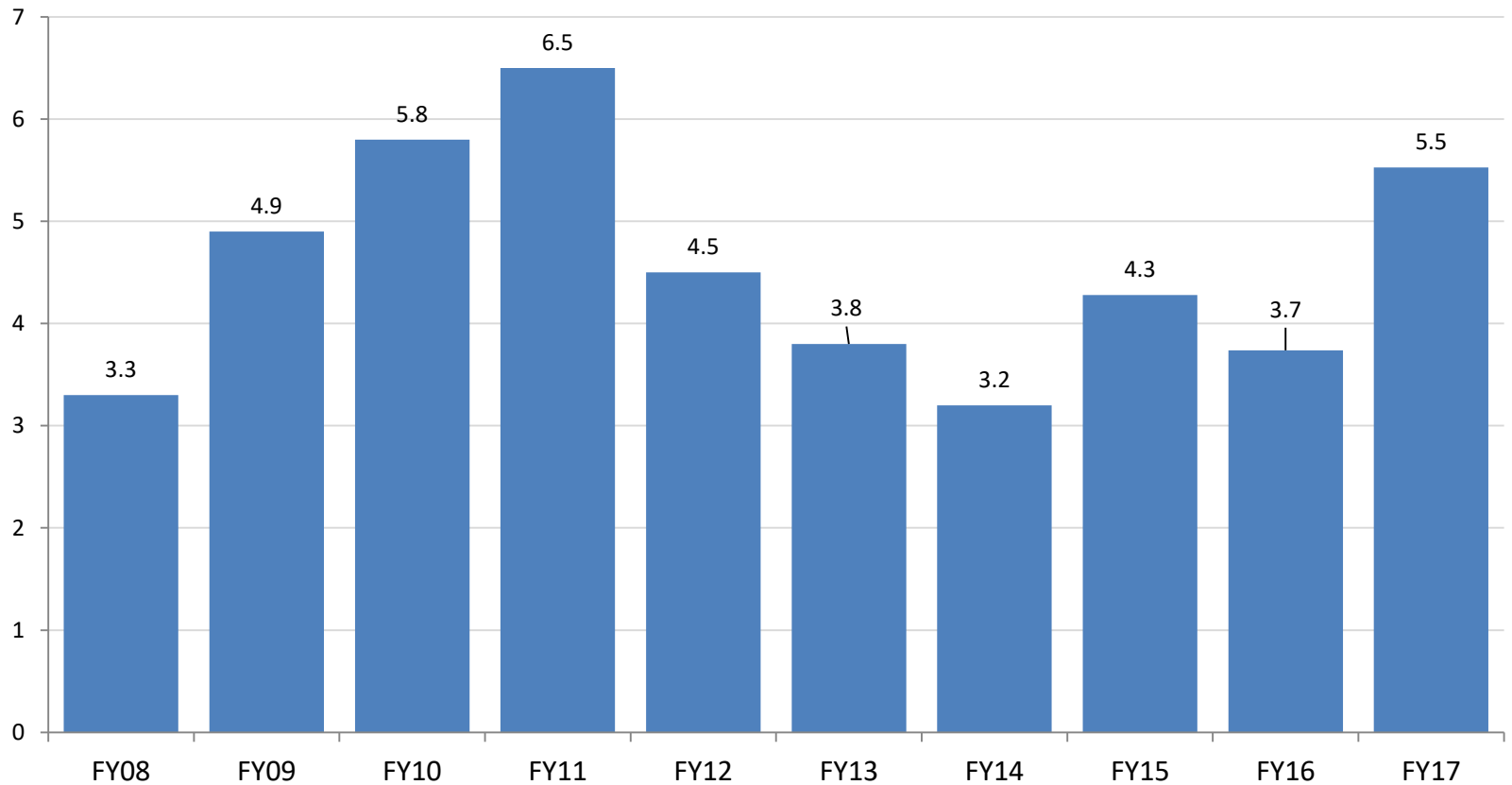
Western Region Pre-D Detention Population

- Youth detained pre-disposition for Crimes of Violence increased 6% through FY17.
- Pre-disposition for non-violent felonies decreased through FY16, then increased in FY17.



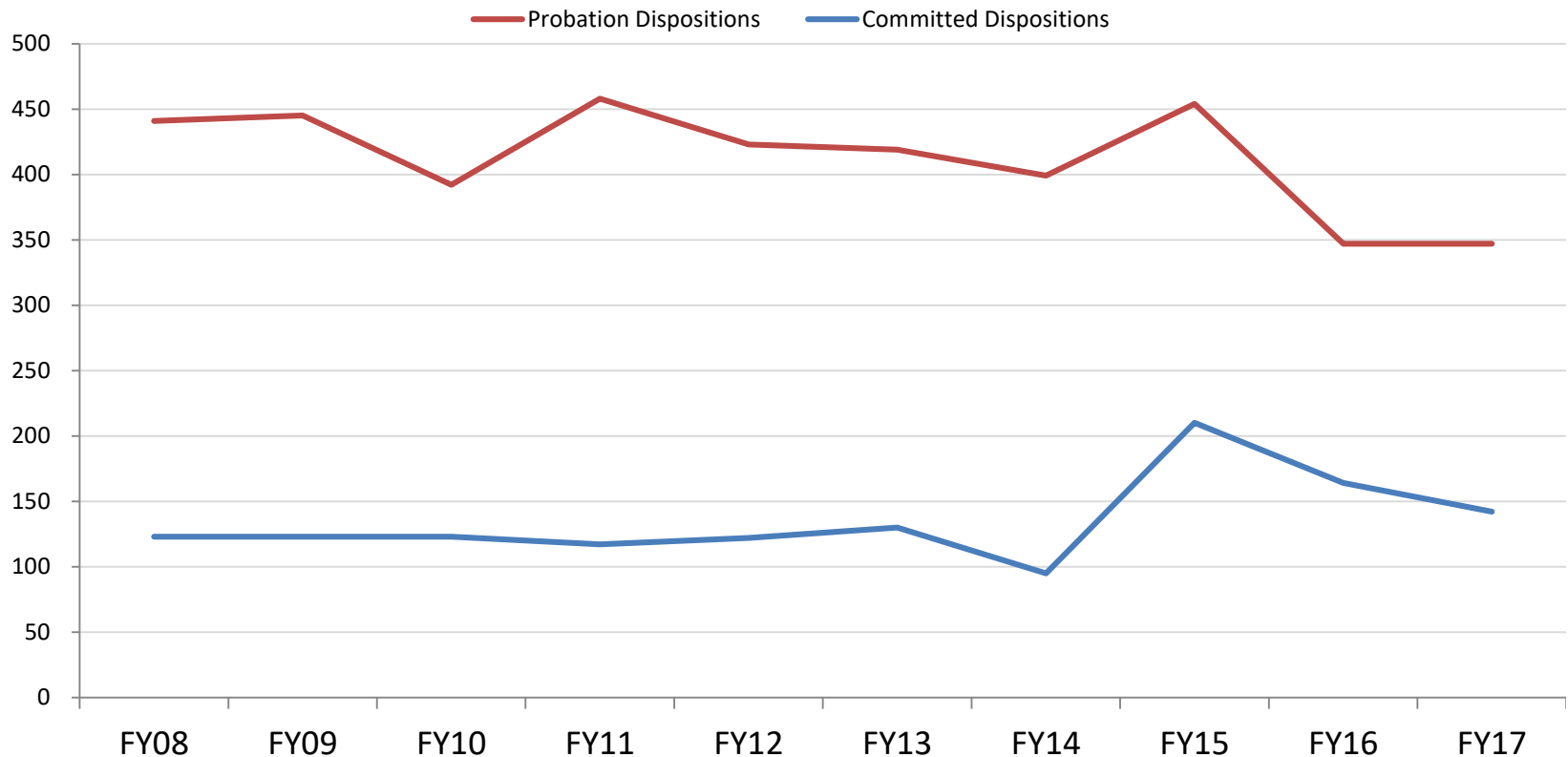
Western Region Youth In Detention Pending a Committed Placement Has Declined

- Juvenile court pending placement population increased 2.2% in ten years to 5.5 youth in FY 2017.



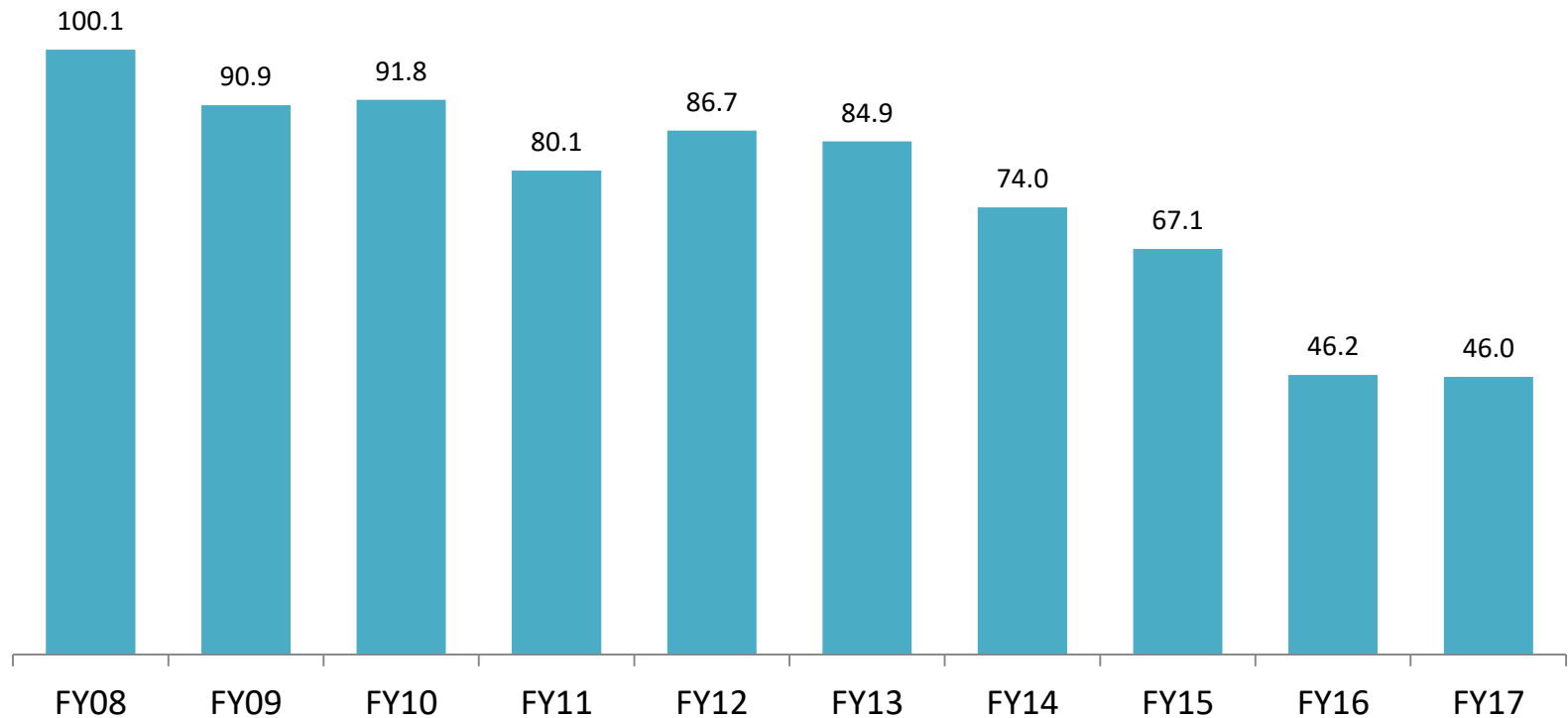
Juvenile Probation and Commitment Orders Have Declined

- Western Region Juvenile probation orders declined 21.3% in ten years. Statewide probation orders declined 54.2% over the same period.
- Western Region juvenile commitments increased 15.4% in ten years. Statewide commitments declined 34.0% over the same period.



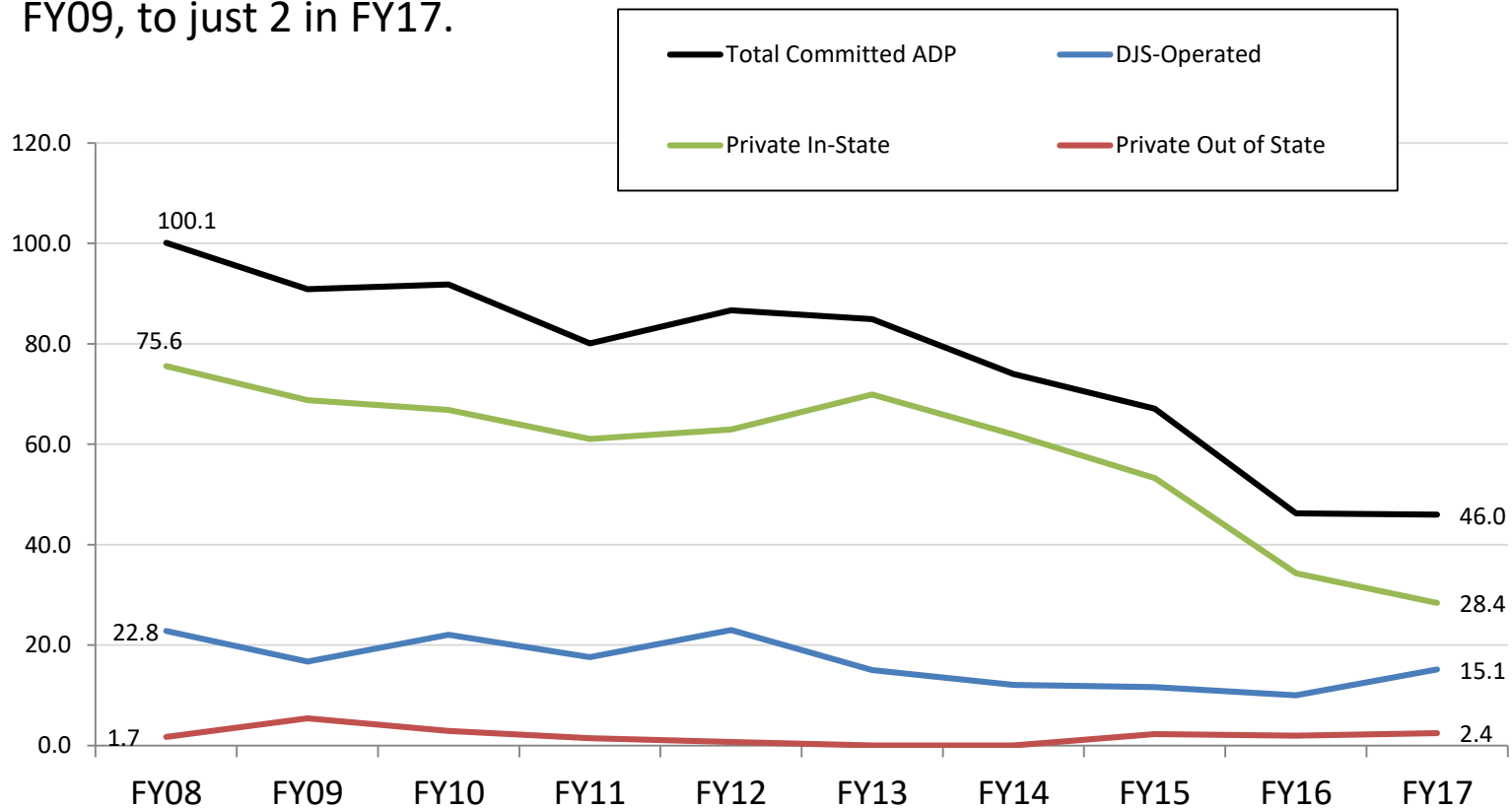
Average Committed Out of Home Population Has Declined Significantly in the Western Region

- The overall daily population of Western Region youth committed by the juvenile court to out of home placement declined 54.0% over ten years, from 100.1 in FY08 to 46.0 in FY17.
- Statewide average committed population declined 50.9% over the same period.



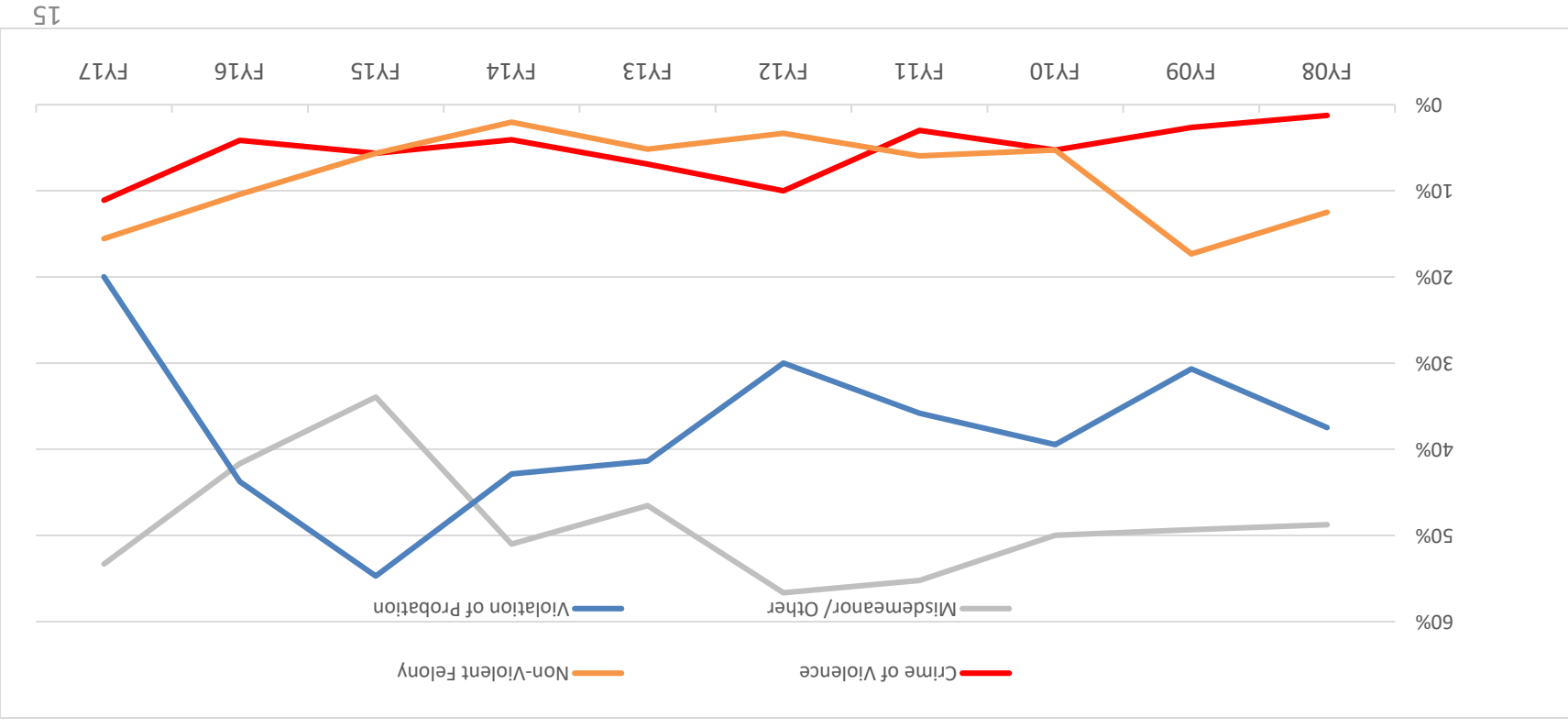
Western Region Committed Youth Population Has Declined

- Overall committed out-of-home population has declined 54.0% since FY08.
- DJS-Operated ADP decreased 33.8%, and Private In-State has declined 62.4% since FY08.
- Out of State committed average population declined from the high of 5 youth in FY09, to just 2 in FY17.



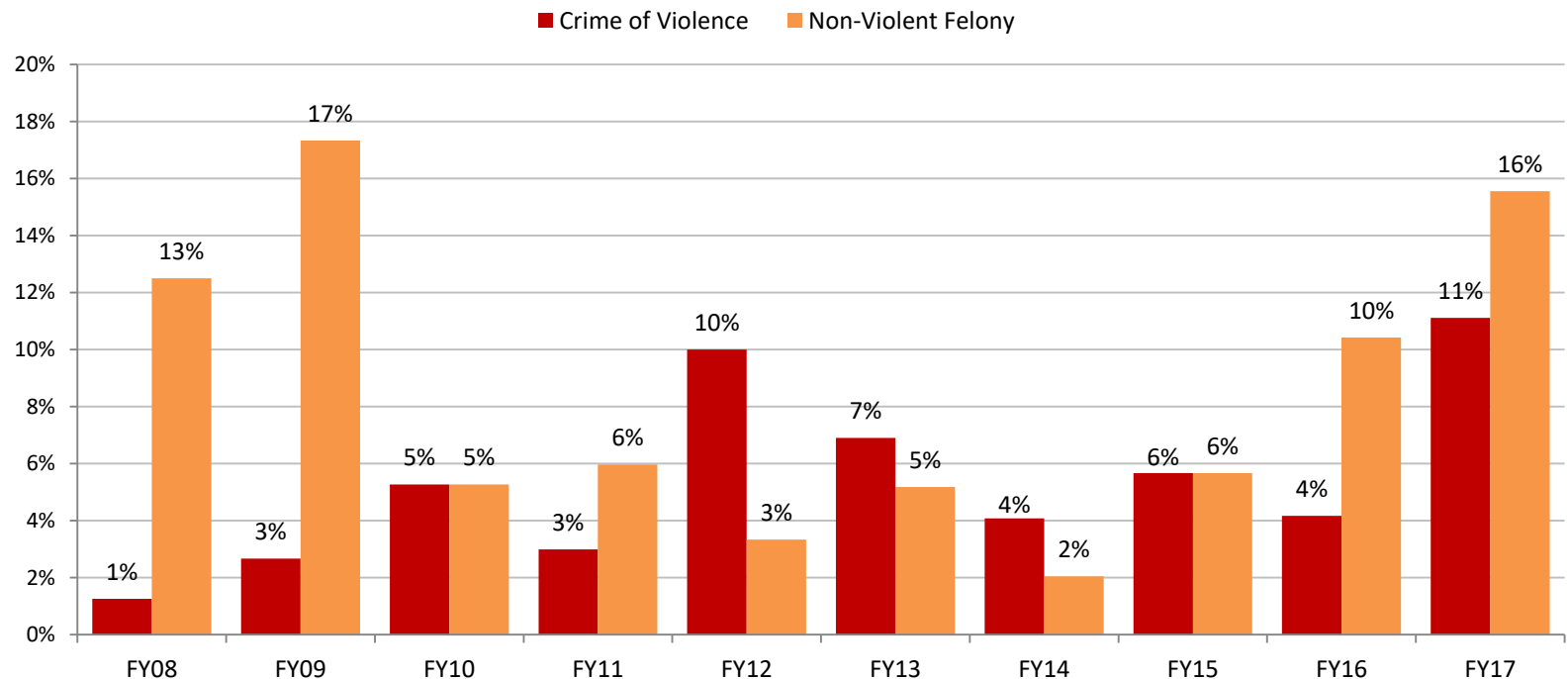
The Rate of Juveniles Committed for Low-Level Offenses Has Declined

- The proportion of new commitments for misdemeanors and other low-level offenses increased over ten years.
- The proportion of new commitments for violations of probation has begun to decline in the last year.



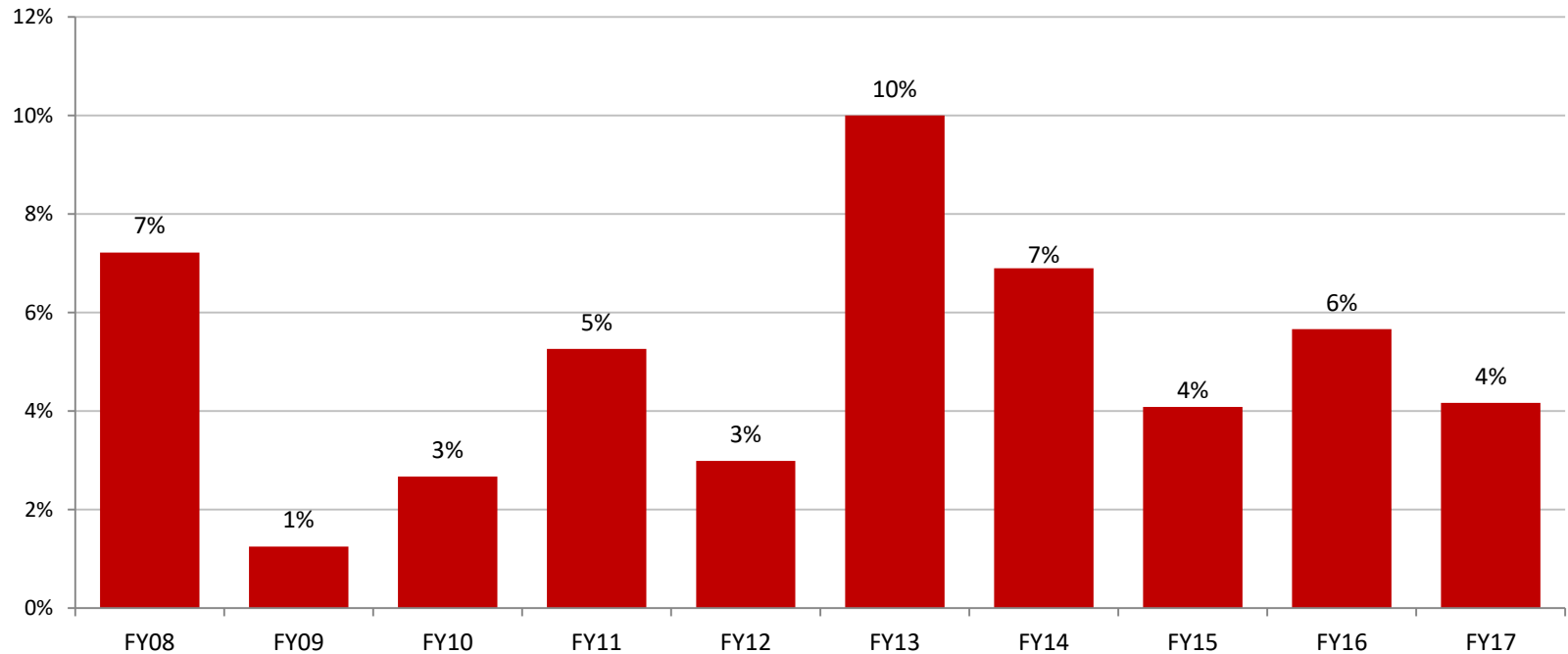
The Rate of Juveniles Committed for Crimes of Violence has Decreased in the Western Region

- Crimes of Violence make up less than 15% of new commitments in FY 2017.
- The rate of juveniles committed for Non-Violent Felonies increased 6% in the last year.



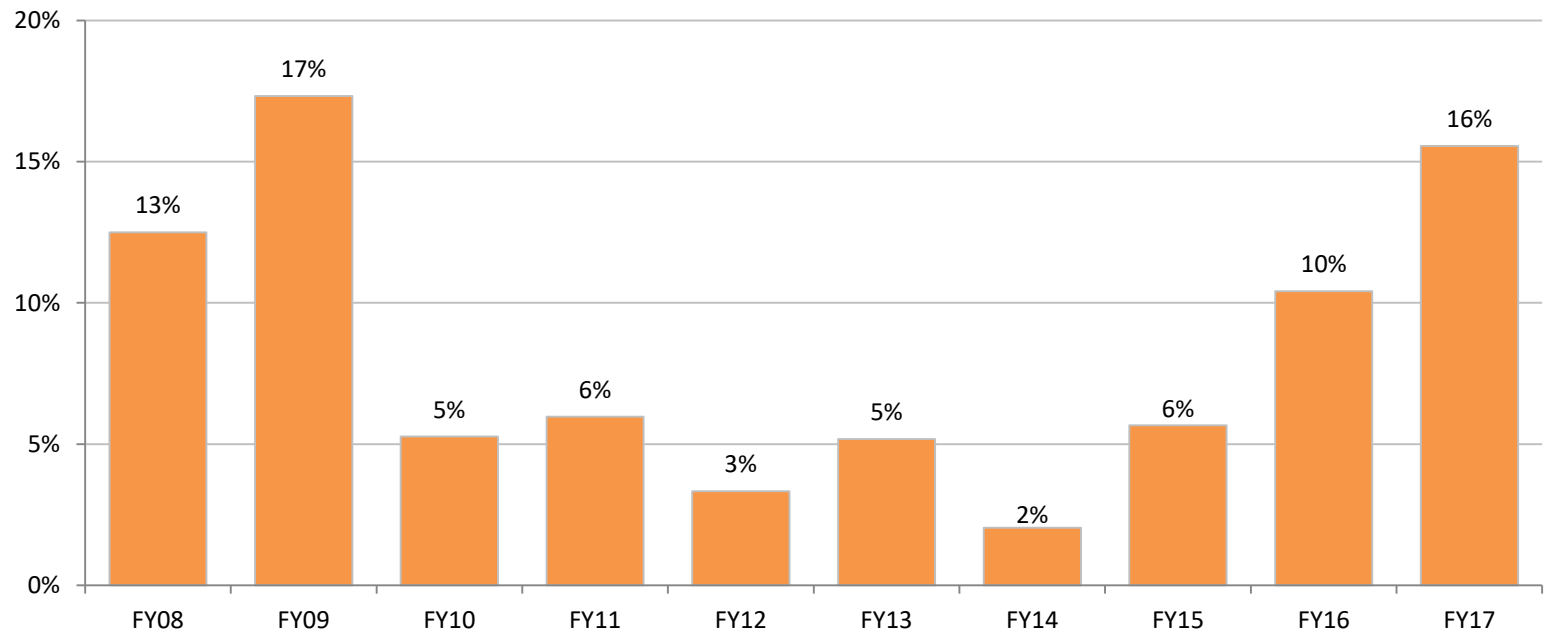
The Rate of Juveniles Committed for Crimes of Violence has Decreased in the Western Region

- Crimes of Violence make up 4% of new commitments in FY 2017 in the Western Region.



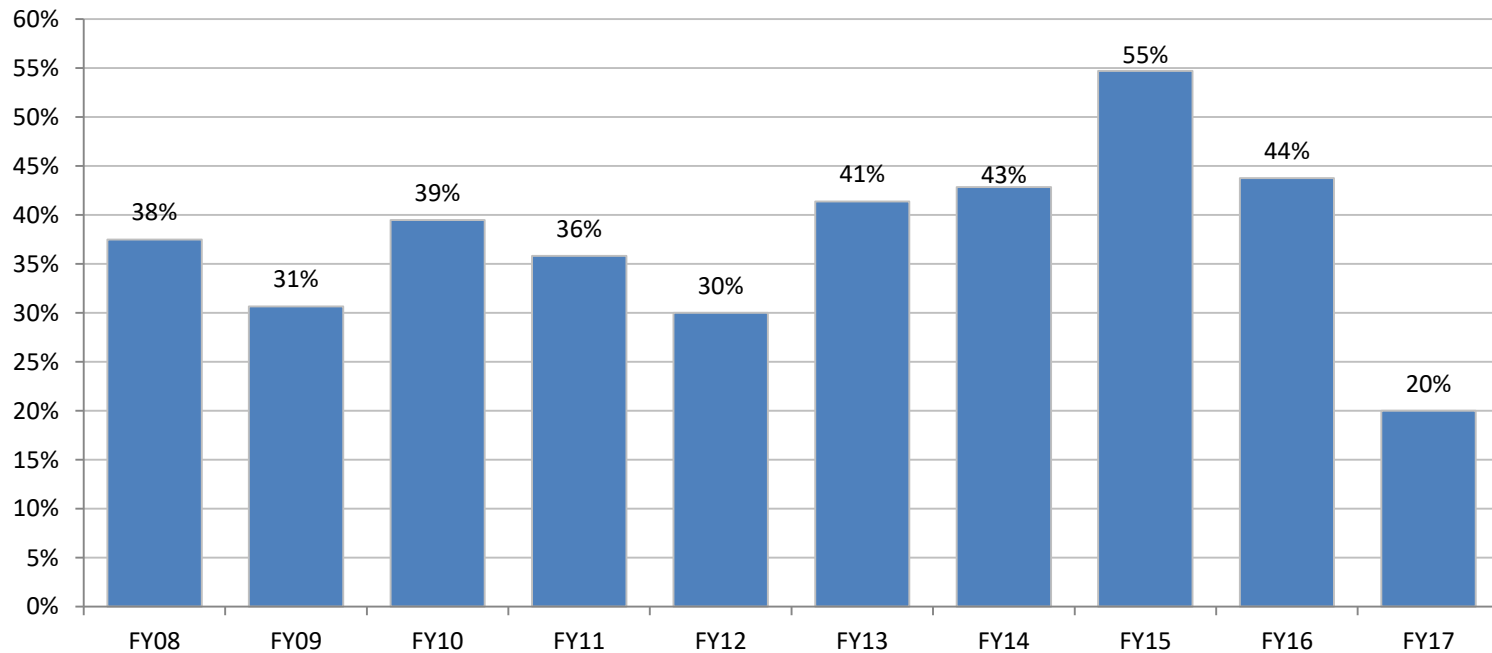
The Rate of Juveniles Committed for Non-Violent Felonies has Increased in Western Region

- Non-violent felonies has increased 14% since FY2014 from 2% to 16% in FY2017.



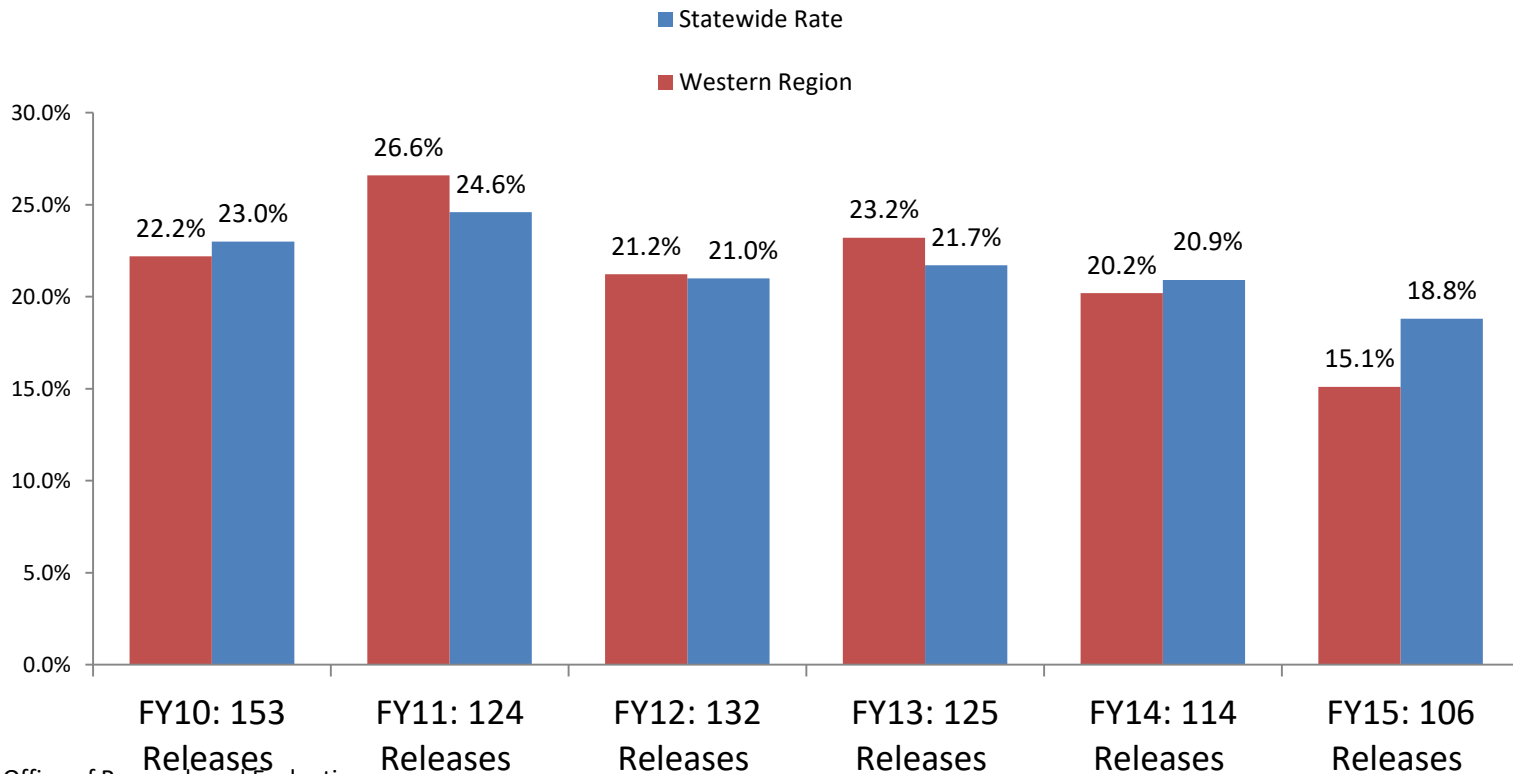
The Rate of Juveniles Committed for Violations of Probation has Declined in the Western Region

- After increasing from FY 2012 through FY 2015, the rate of new commitments for Violations of Probation has decreased 35 percentage points to 20% in FY2017.



Recidivism Rates for Western Region DJS Committed Youth Have Declined in Recent Years

- 15.1% of Western Region youth released from committed placement in FY15 had a new offense within a year that resulted in a delinquent adjudication or criminal conviction, a significant decrease of 5.1 percentage points from FY14.
- The Statewide rate was 18.8% in FY15, down 4.2 points from FY14.



Recidivism Rates for Western Region DJS Probation Youth Have Increased in The Past Year

- 22.5% of Western Region youth placed on probation for the first time in FY15 had a new offense within a year that resulted in a delinquent adjudication or criminal conviction, an increase of 5.0 percentage points from FY14.
- The Statewide rate was 18.2% in FY15, down 12.8 points from FY14.

