

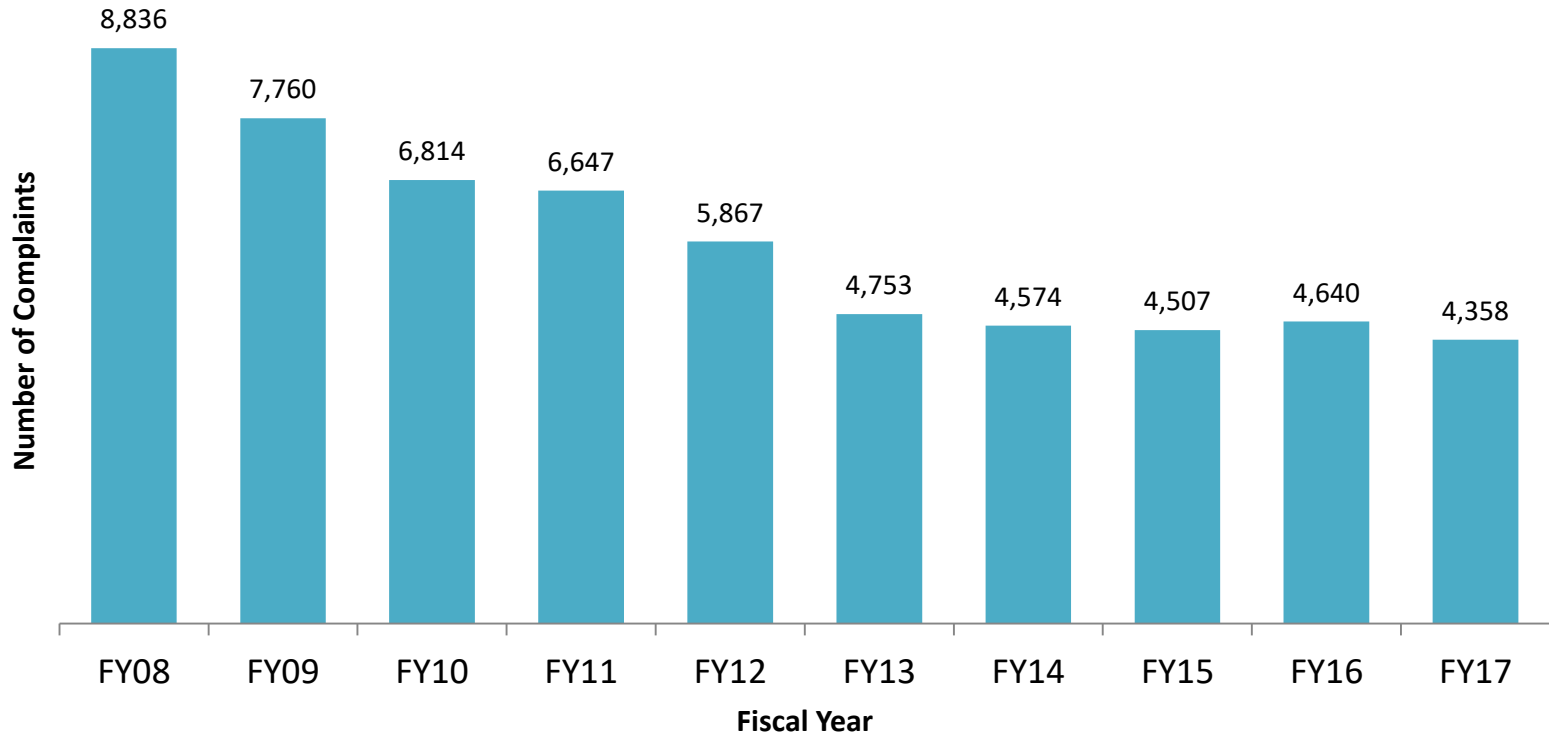


# Southern Region Juvenile Services Long Term Trends: Counties of Anne Arundel, Calvert, Charles, and St. Mary's

DJS Office of Research and Evaluation, January 2018

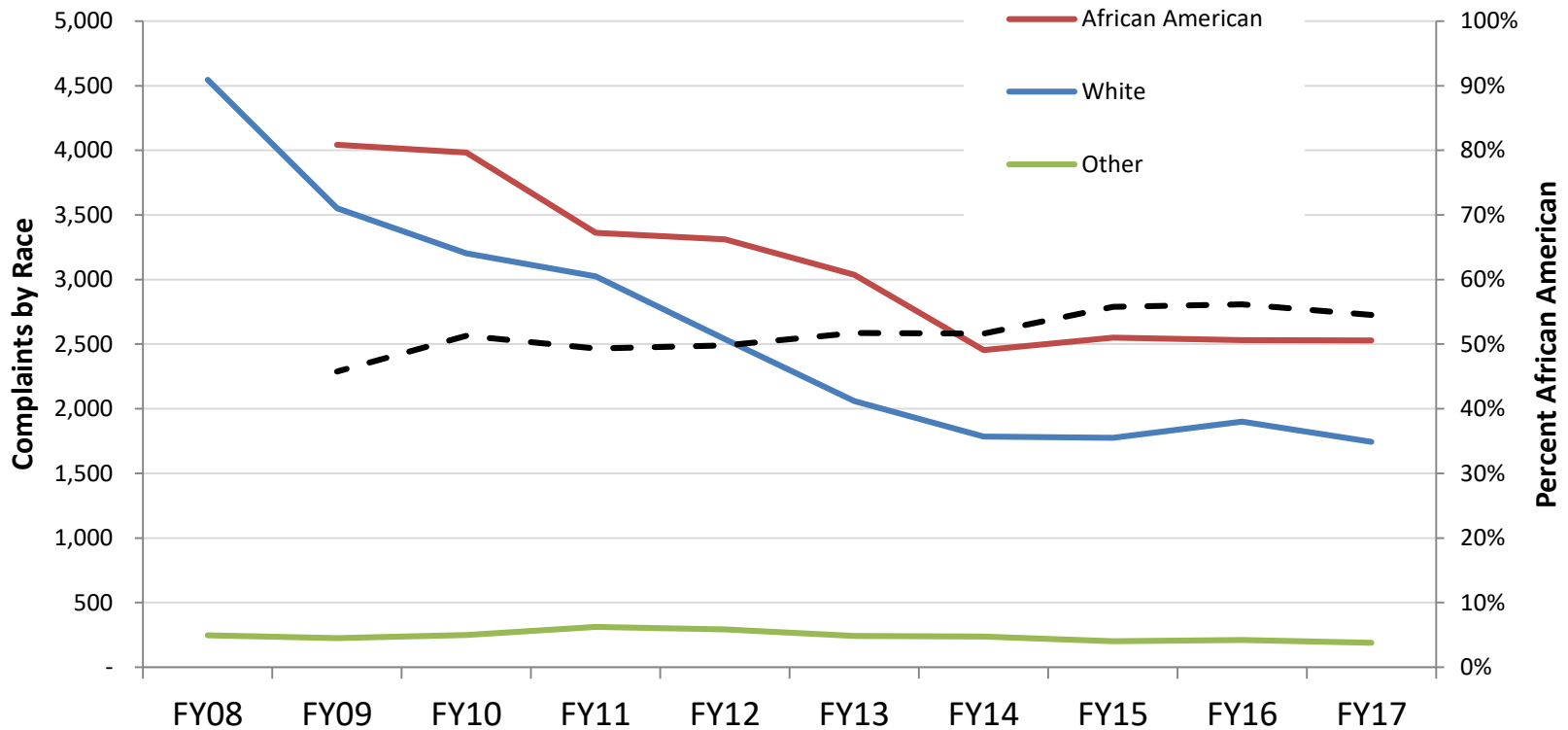
# Southern Region Juvenile Complaints Have Declined Significantly

- Southern Region complaints referred to DJS Intake declined 50.7% in ten years.
- Statewide complaints declined 57.9% over the same period.



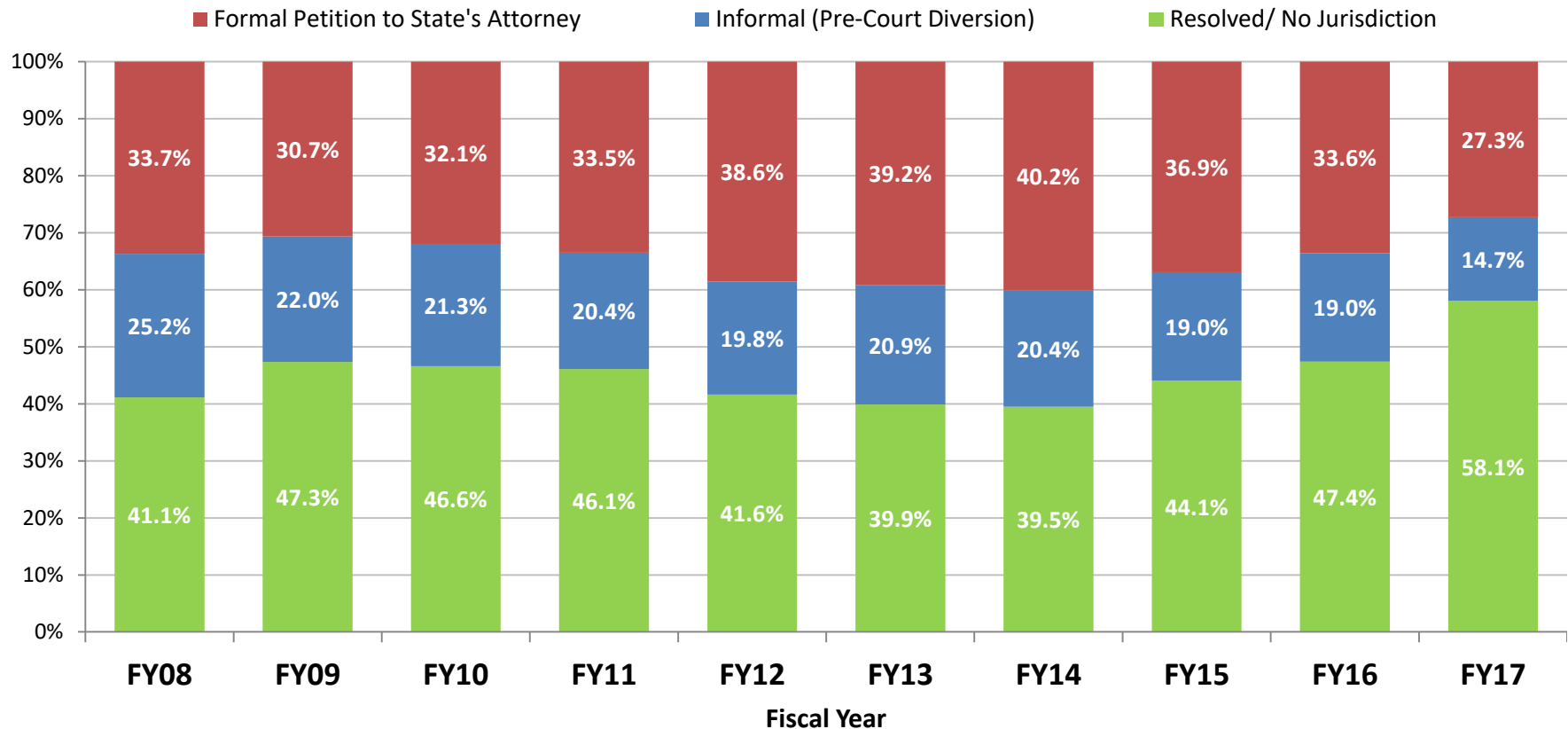
# Juvenile Complaints in Southern Region Have Declined for All Race/Ethnicities Since FY08

- Complaints for Southern Region African American youth declined 40.0%, and declined 61.6% for white youth.
- African American youth comprise 56% of complaints.
- African American youth comprise 23.2% of the general population.



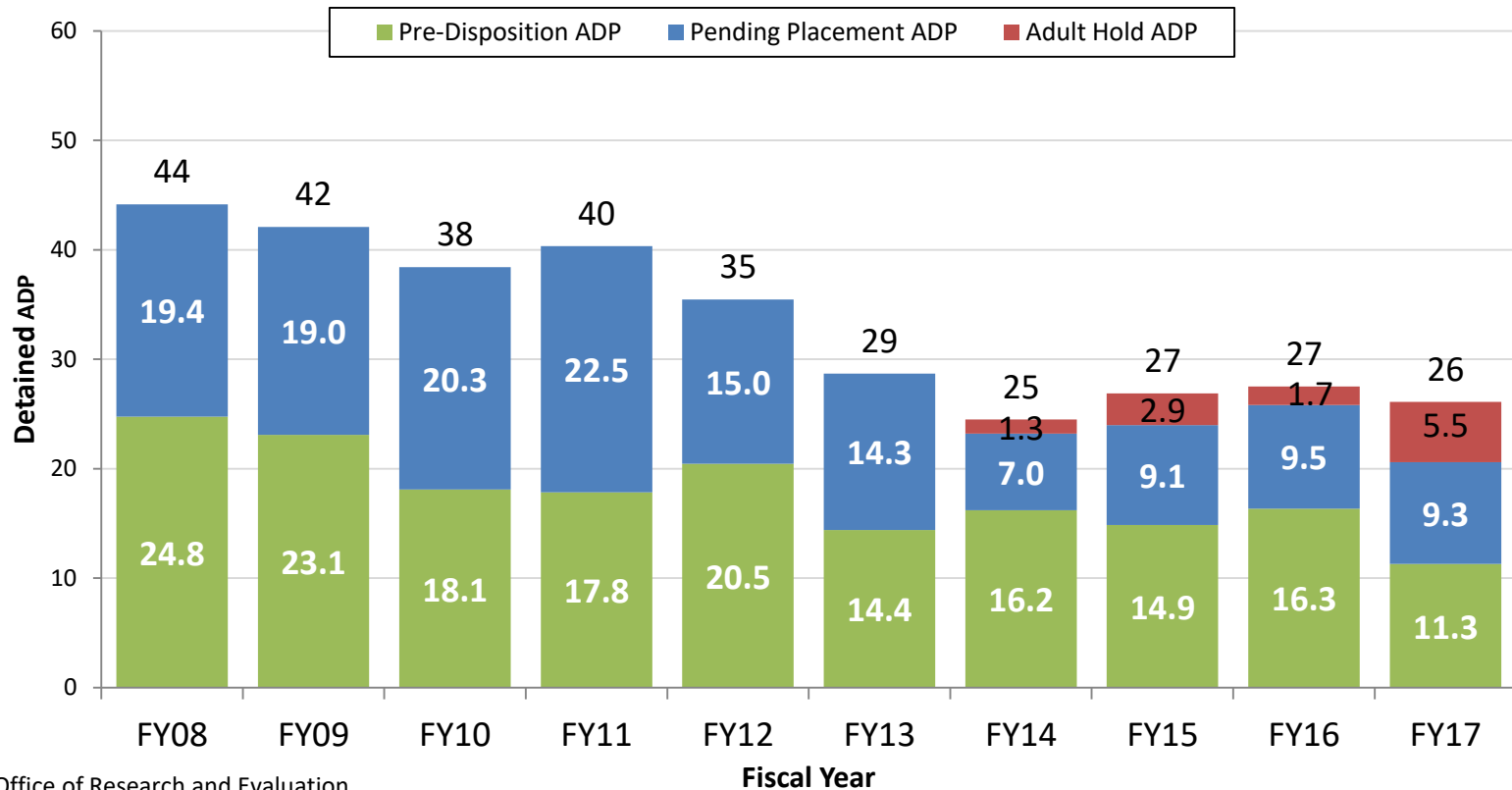
# The Percent of Cases Referred to Juvenile Court by Southern Region has Declined Over the Past Two Years

- 27.3% of Southern Region complaints were referred to court by DJS Intake in FY17, 6.4% more than in FY08. Statewide 46.7% were referred to court.
- 14.7% of Southern Region complaints were diverted to an informal DJS pre-court case. Statewide 14.6% were diverted.



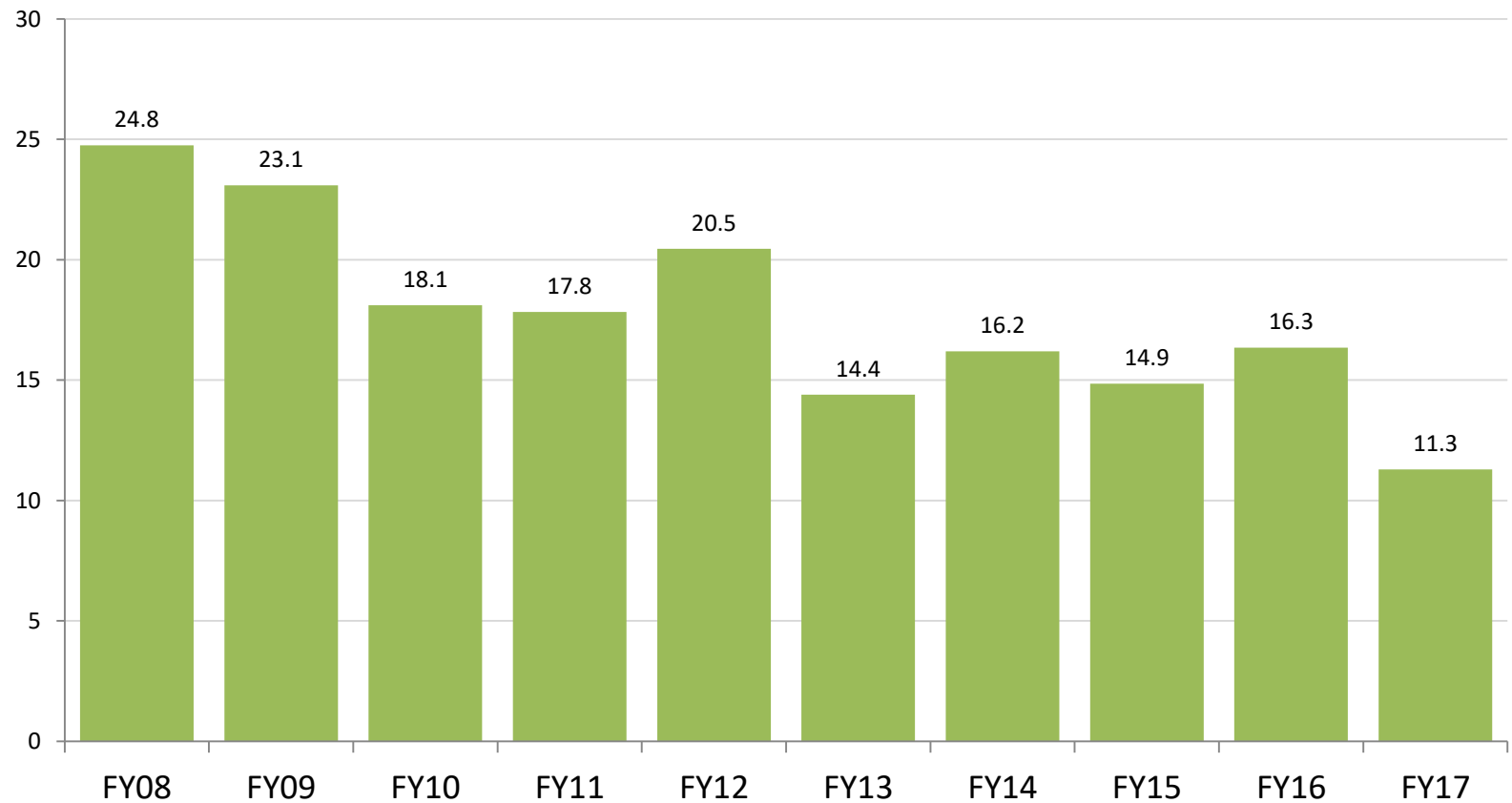
# Southern Region Detention Population Has Declined Significantly

- Southern Region daily population in DJS detention declined 40.9% in ten years, to 26 in FY17. The statewide detention population declined 27.7% over the same period.
- Cases detained for the Adult Court now make up 21.2% of the DJS detained population in Southern Region.



# Southern Region Youth Population In Detention Pre-Disposition Has Declined Significantly

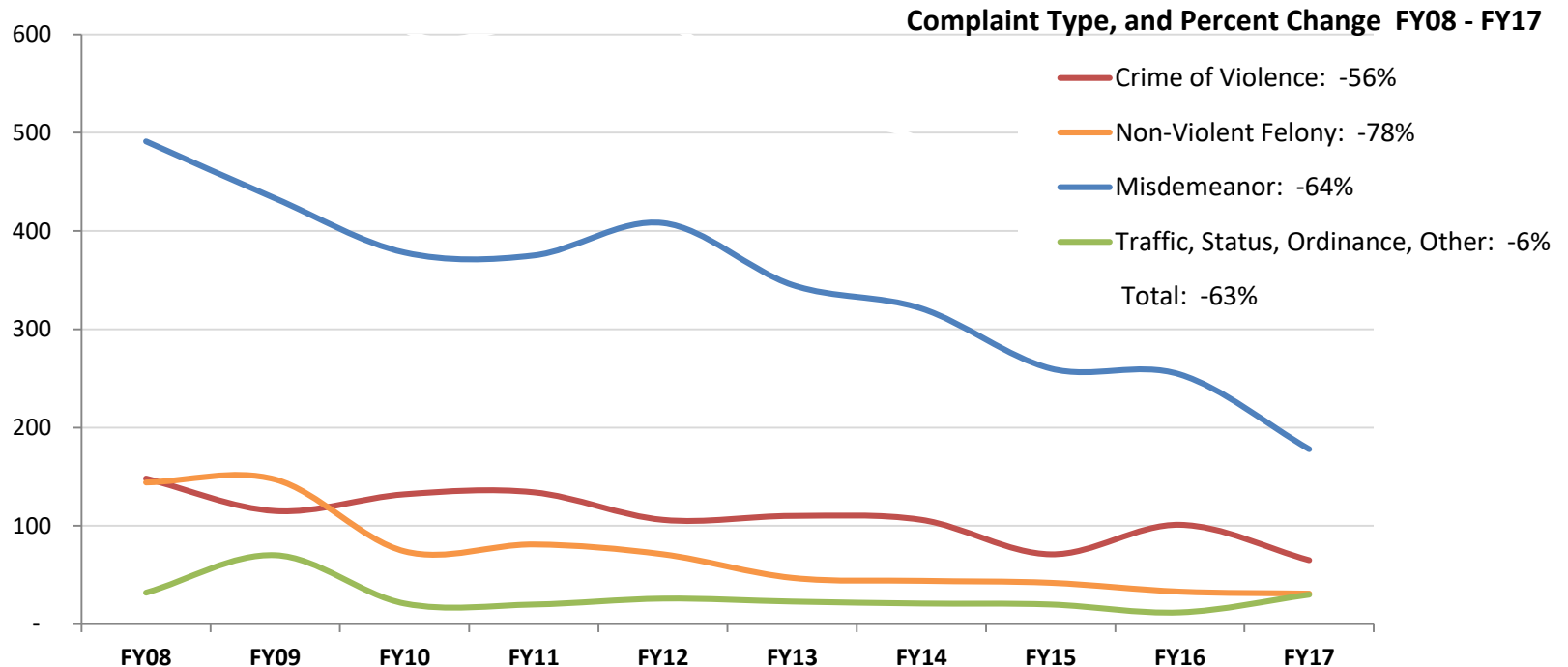
- The Southern Region juvenile pre-dispositional detained population declined 54.4% in ten years to 111.3 youth in FY 2017.



# Southern Region Pre-Disposition Detention Placements Have Decreased for All Complaint Types

- Youth detained pending disposition for misdemeanors has decreased 64% over ten years.
- Youth detained pending disposition for crimes of violence has decreased 56% over ten years.

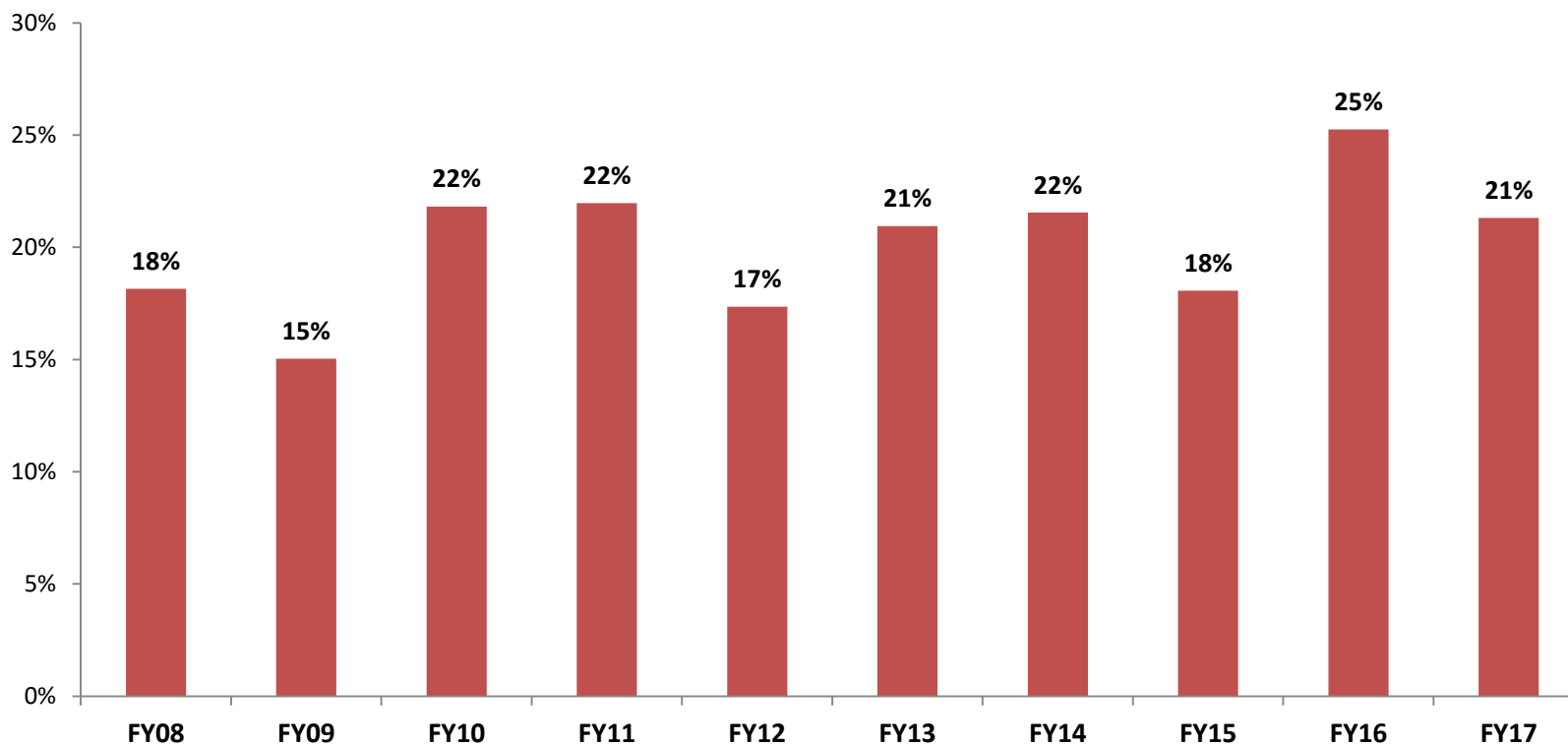
**Pre-D Detention Admissions by Complaint Type, FY08 - FY17**



# Crimes of Violence Make Up an Increasing Proportion of Detention Placement Offenses

- The proportion of youth detained pre-disposition for Crimes of Violence complaints has increased 3 percentage points over ten years.
- The detained population is increasingly comprised of youth with violent crimes complaints.

**Proportion of Pre-D Detention Admissions For Crimes of Violence, FY08 - FY17**

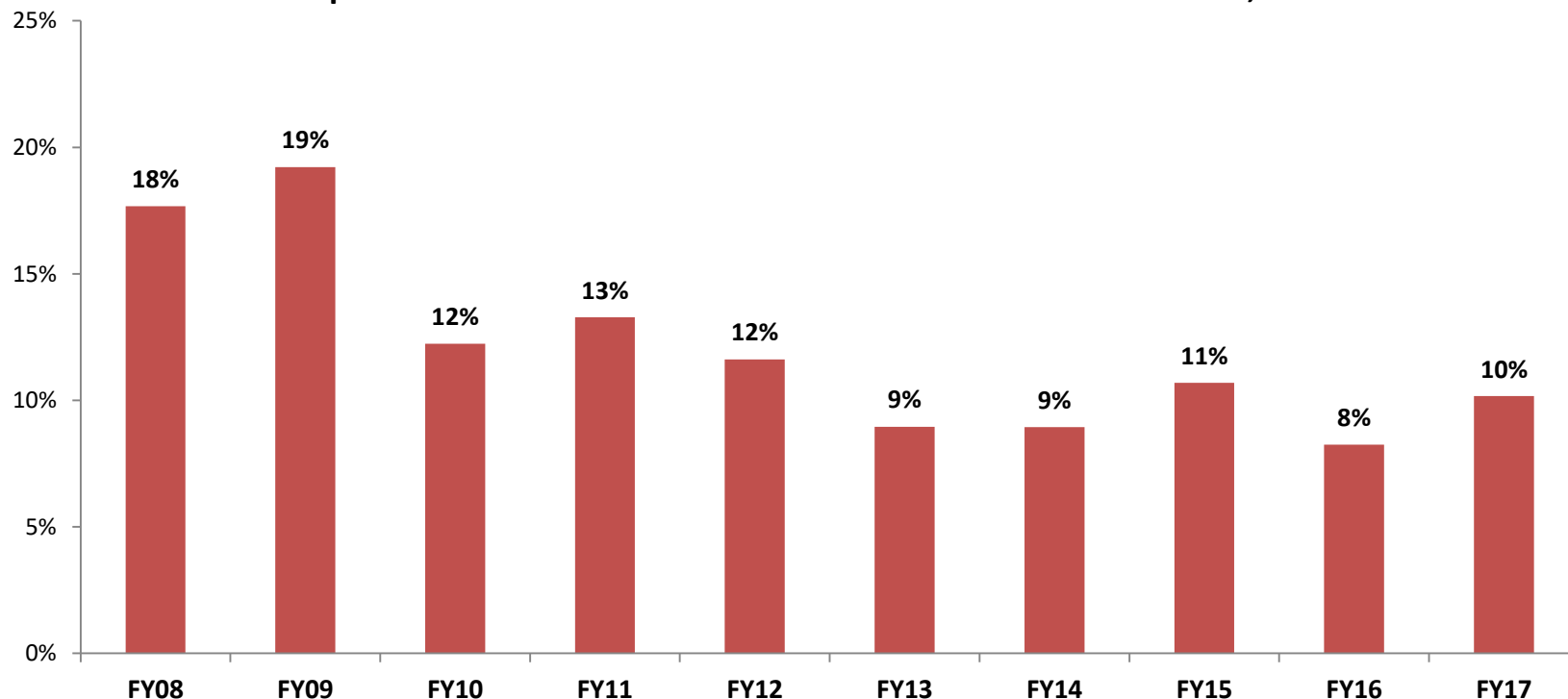




# Detention Placements for Non-Violent Felonies are Declining

- The proportion of youth detained pre-disposition for Non-Violent Felony complaints has decreased 8 percentage points over ten years.
- The detained population is increasingly comprised of youth with violent crimes complaints.

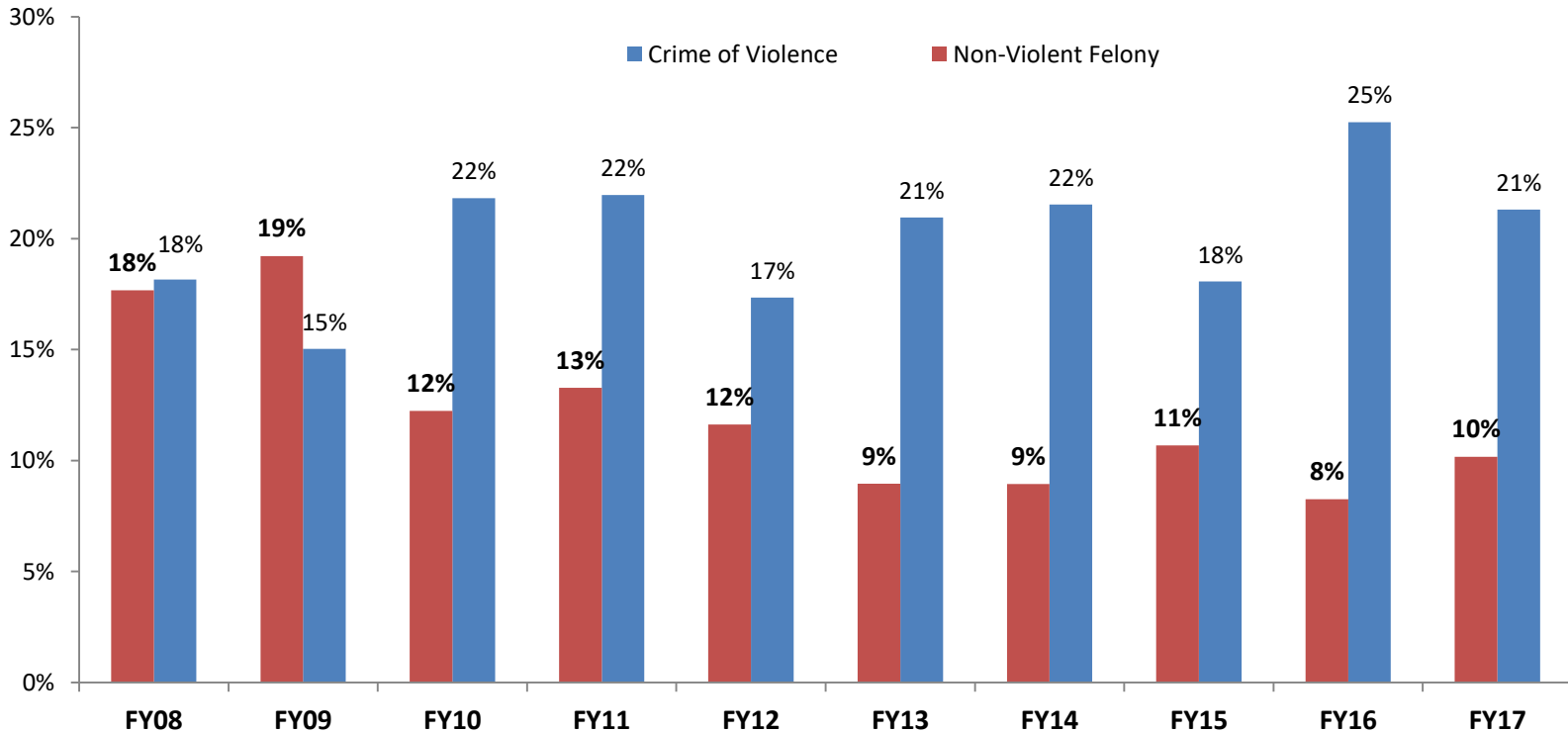
**Proportion of Pre-D Detention Admissions For Crimes of Violence, FY08 - FY17**



# Southern Region Pre-D Detention Population

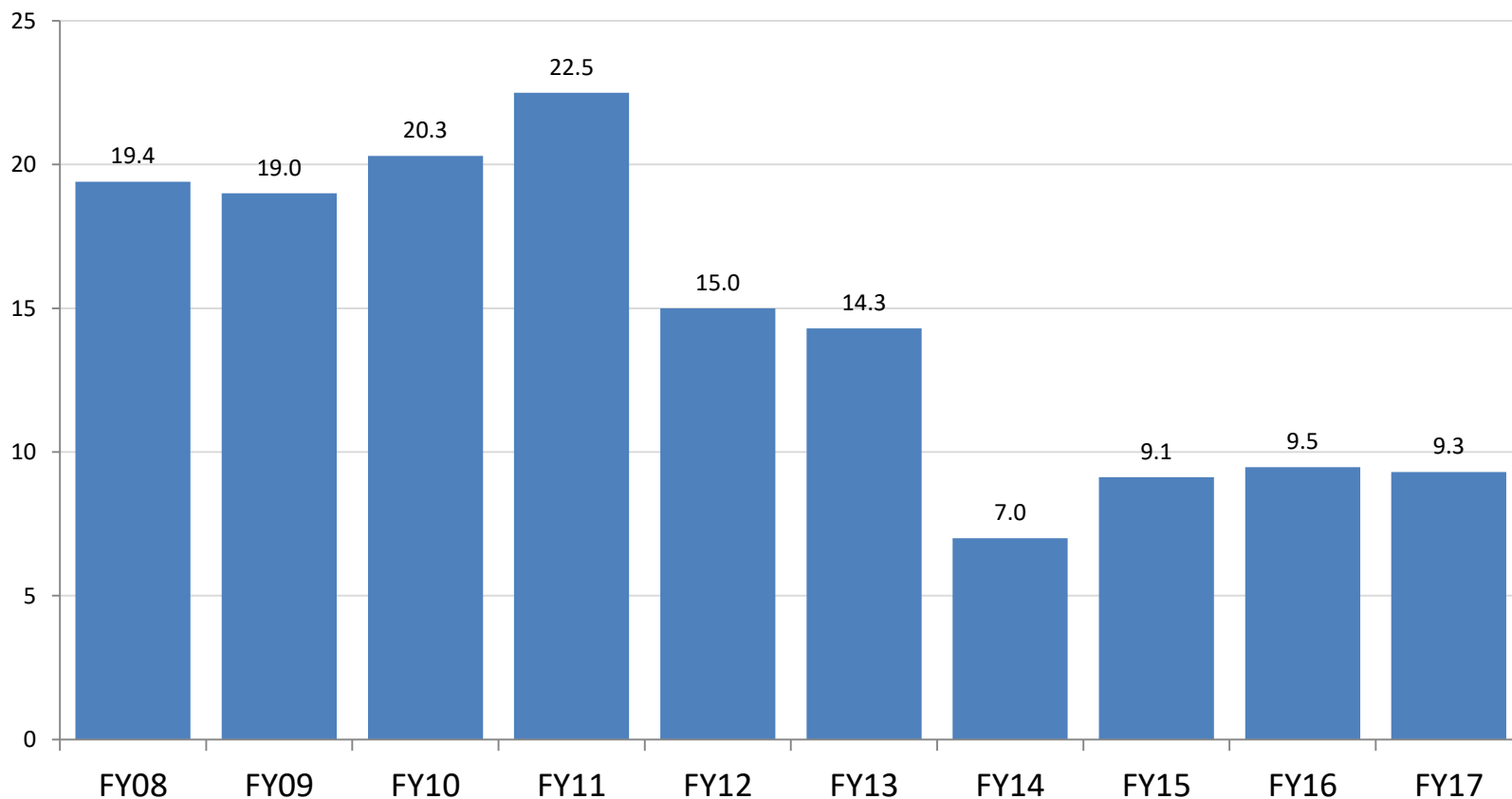
- Youth detained pre-disposition for Crimes of Violence increased 3% over ten years.
- Pre-disposition for non-violent felonies decreased 8% over ten years.

**Proportion of Pre-D Detention Admissions For Crimes of Violence, FY08 - FY17**



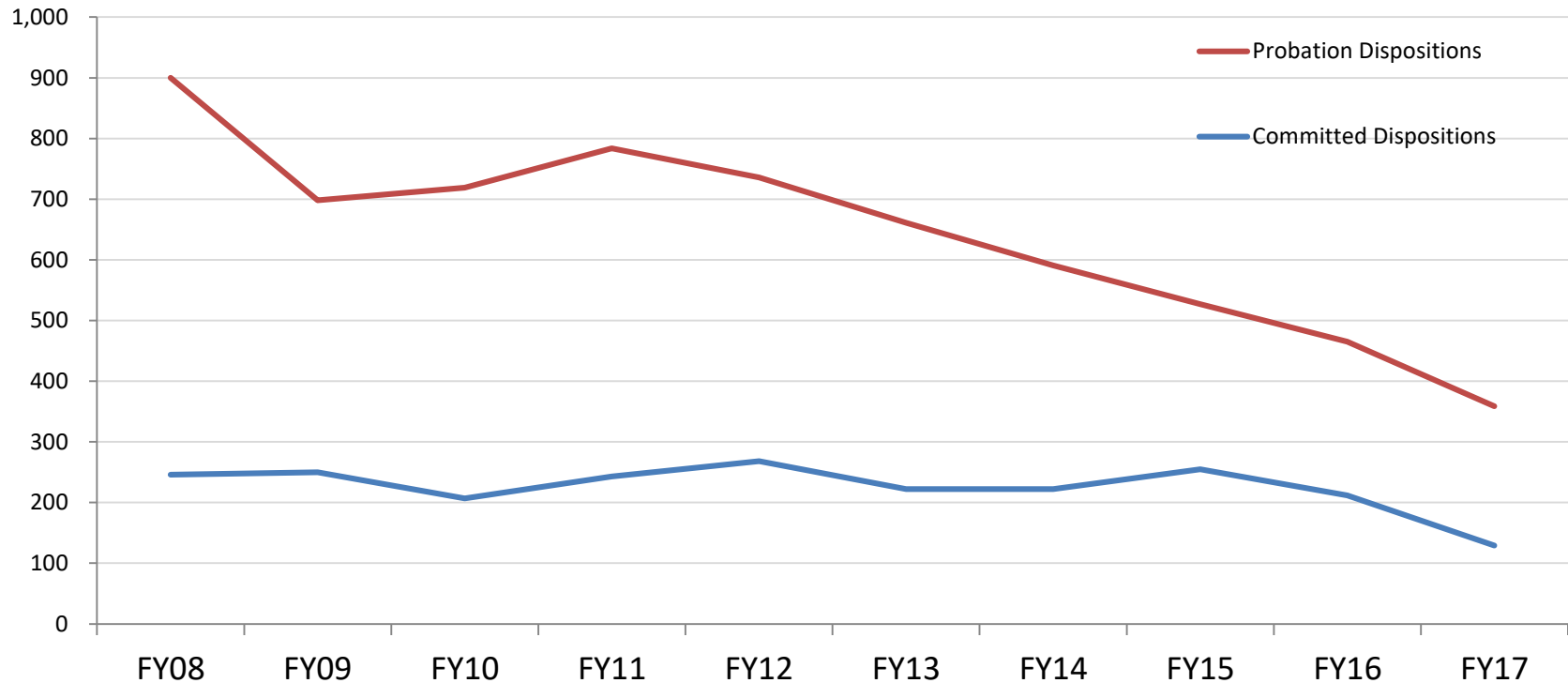
# Southern Region Youth In Detention Pending a Committed Placement Has Declined Dramatically

- Juvenile court pending placement population declined 52.1% in ten years to 9.3 youth in FY 2017.



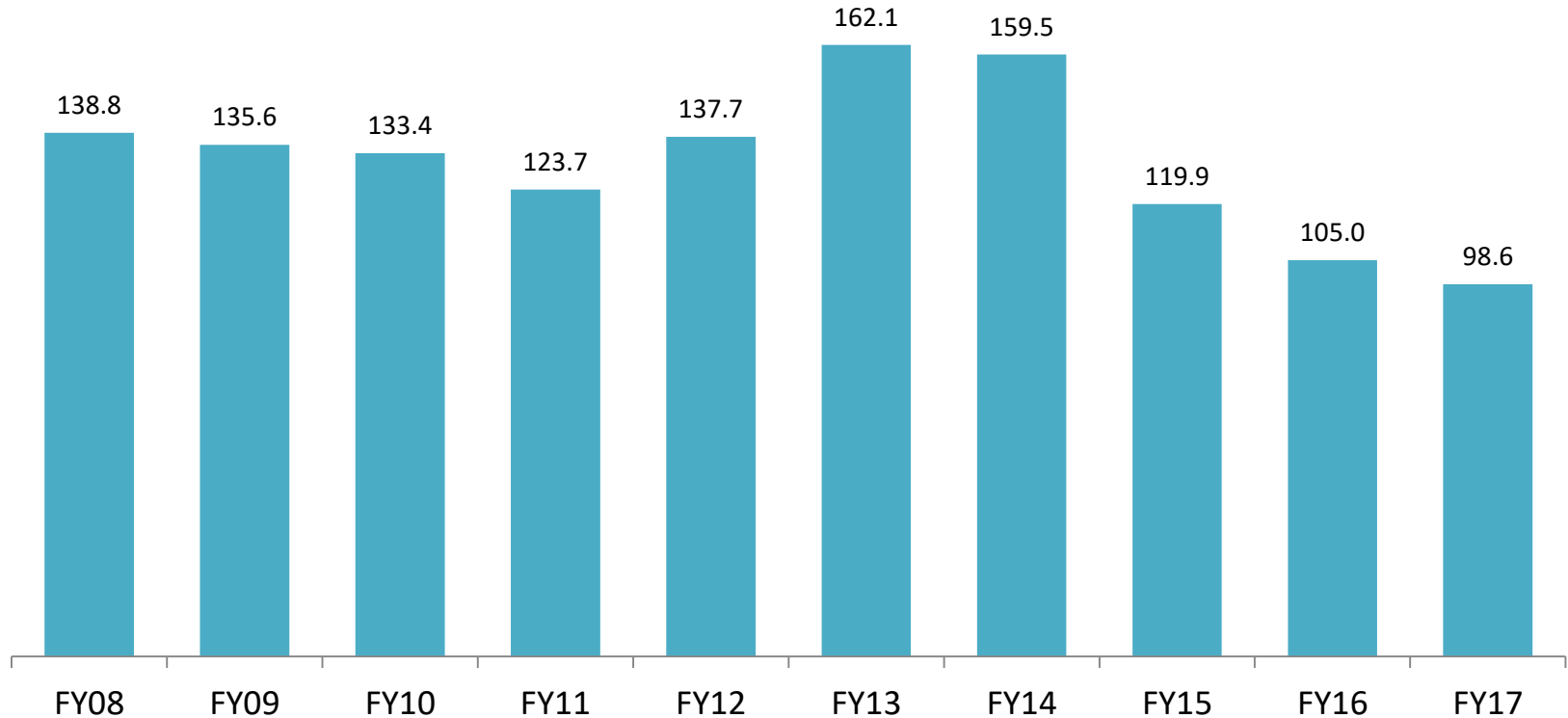
# Juvenile Probation and Commitment Orders Have Declined

- Southern Region Juvenile probation orders declined 60.1% in ten years. Statewide probation orders declined 54.2% over the same period.
- Southern Region juvenile commitments declined 47.6% in ten years. Statewide commitments declined 34.0% over the same period.



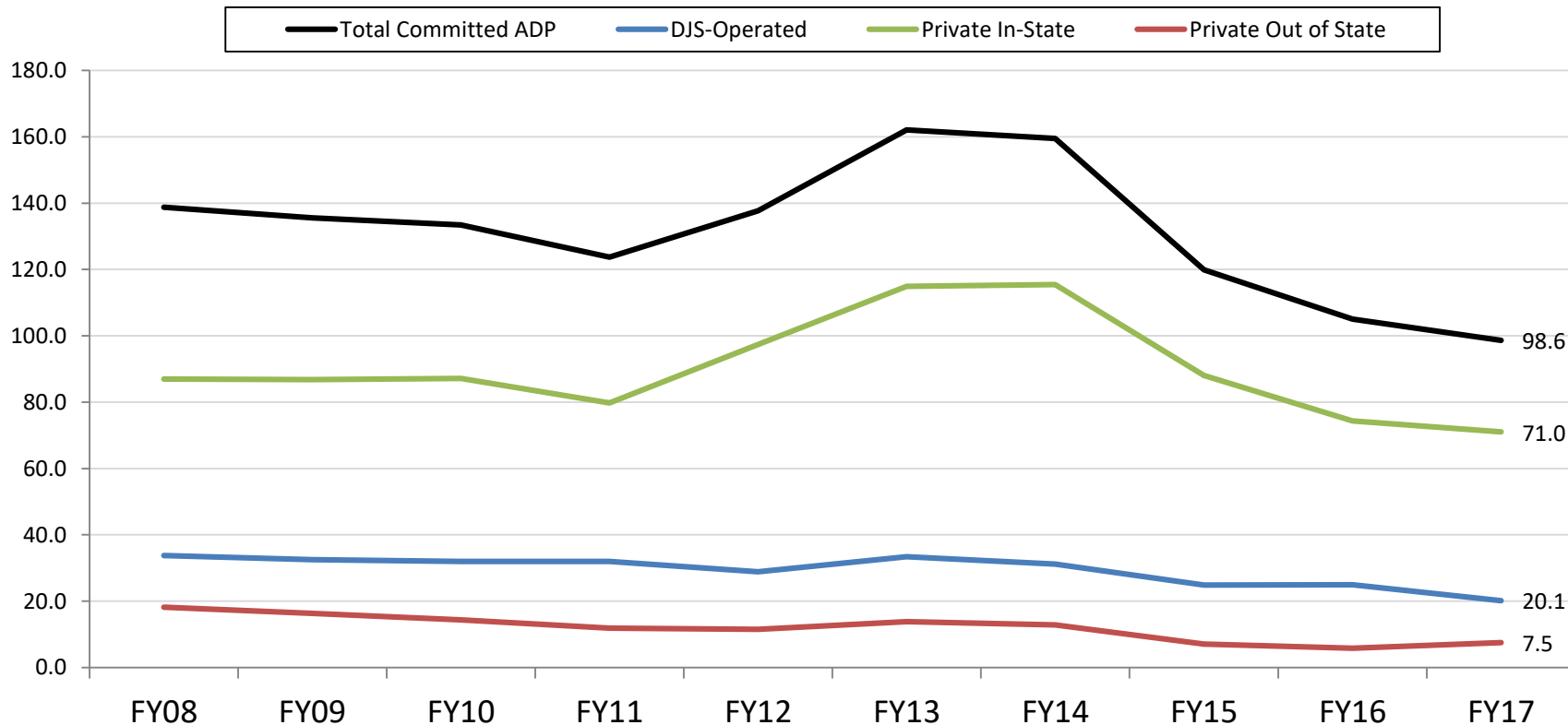
# Average Committed Out of Home Population Has Declined Significantly in the Southern Region

- The overall daily population of Southern Region youth committed by the juvenile court to out of home placement declined 29.0% over ten years, from 138.8 in FY08 to 98.6 in FY17.
- Statewide average committed population declined 50.9% over the same period.



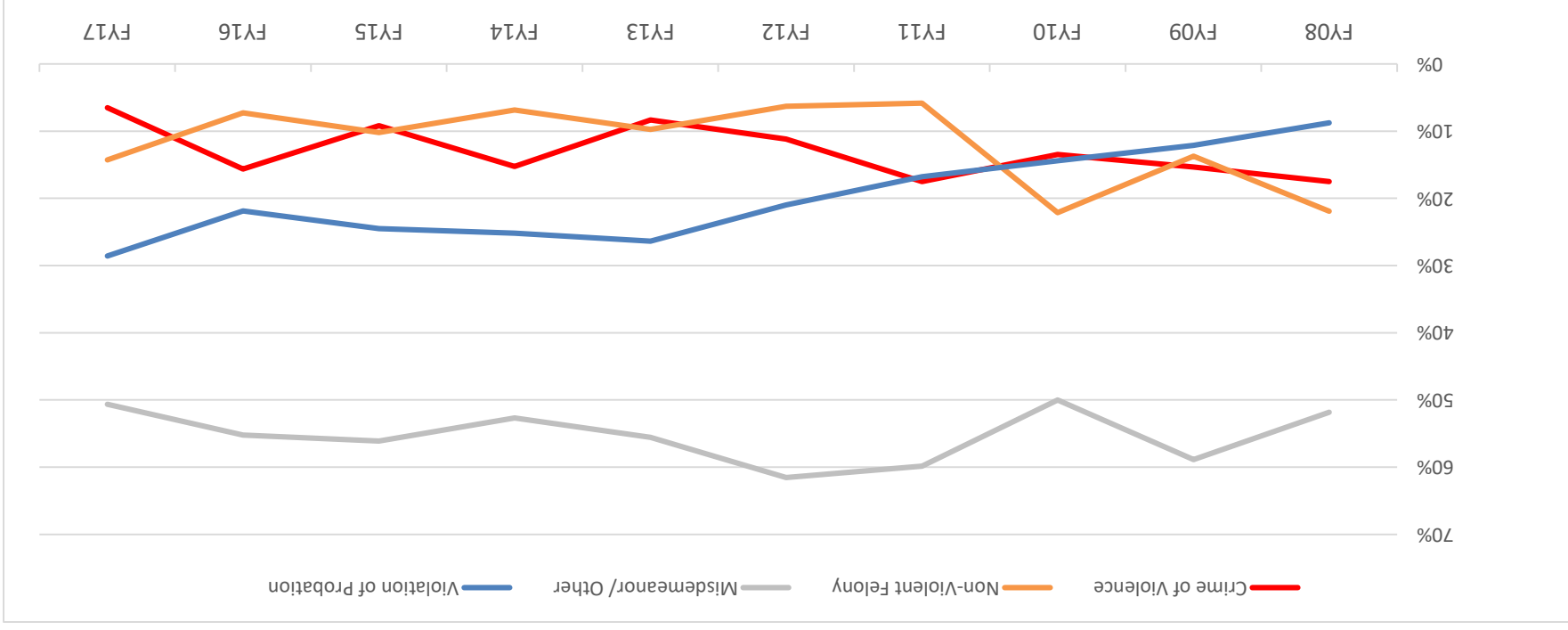
# Southern Region Committed Youth Population Has Declined for All Facility Types

- Overall committed out-of-home population has declined 29.0% since FY07.
- DJS-Operated ADP decreased 40.4%, and Private In-State has declined 18.3% since FY08.
- Out of State committed average population declined from the high of 18 youth in FY08, to just 6 in FY16. In FY17 there were 8 youth in out of state placement.



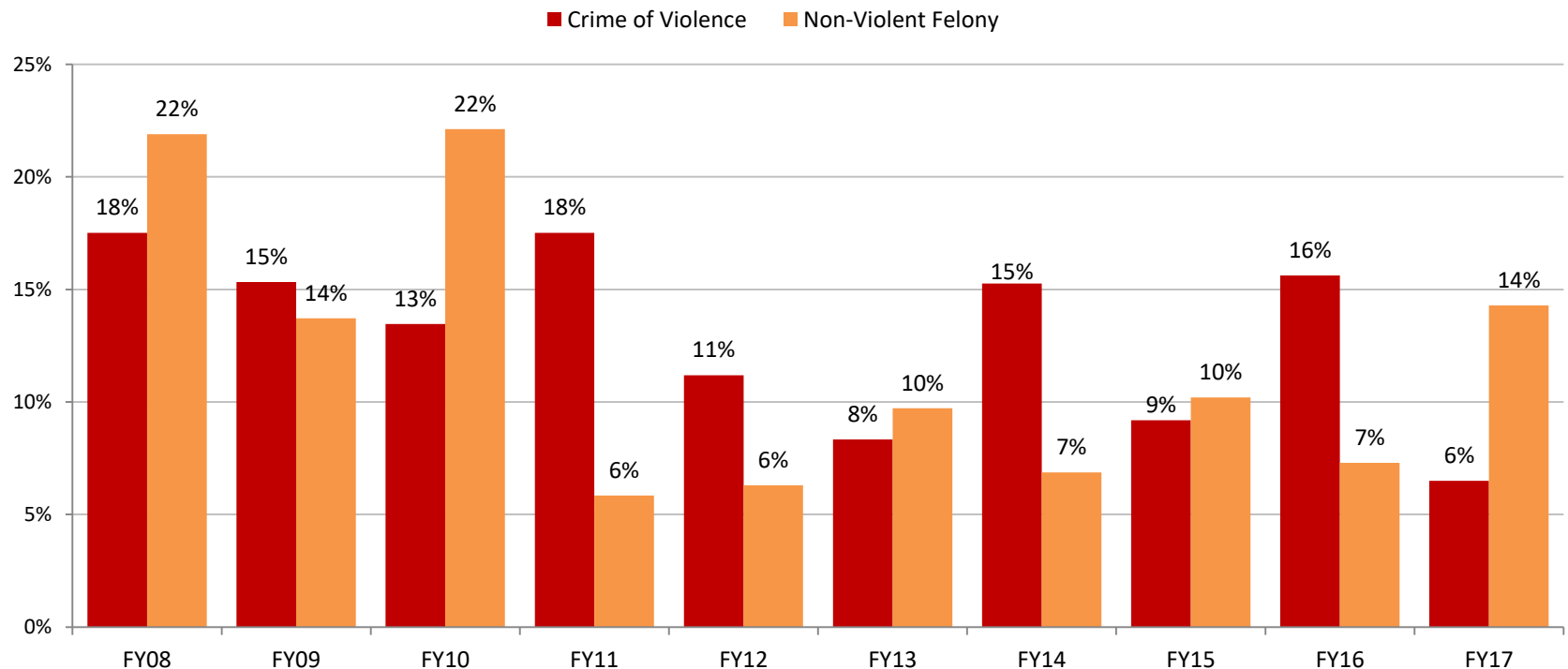
# The Rate of Juveniles Committed for Low-Level Offenses Has Declined

- The proportion of new commitments for crimes of violence, misdemeanor and other low-level offenses declined over ten years.
- The proportion of new commitments for violations of probation increased 20% over ten years.



# The Rate of Juveniles Committed for Crimes of Violence Has Decreased in the Southern Region

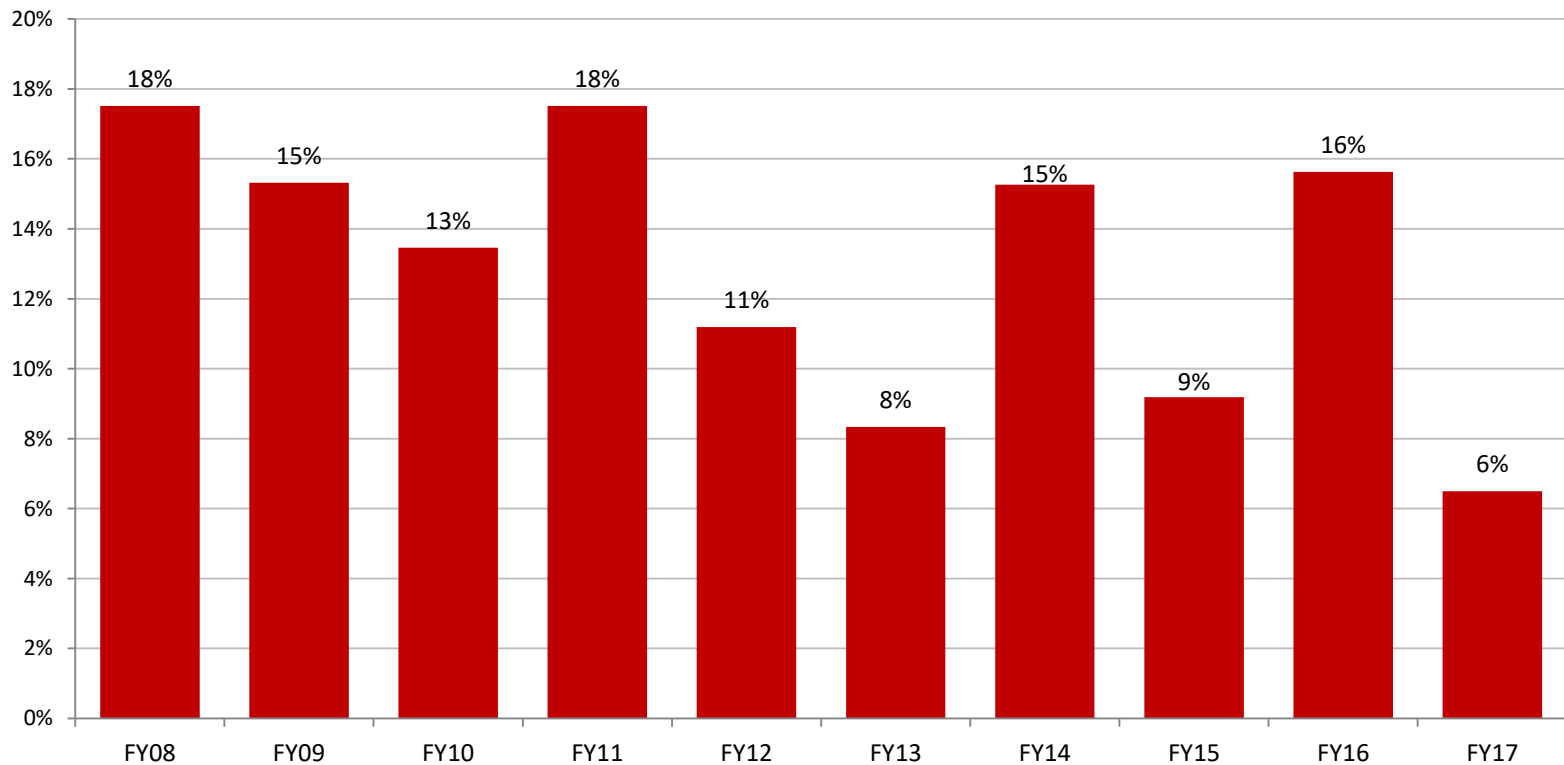
- Crimes of Violence make up 6% of new commitments in FY 2017.
- The rate of juveniles committed for Non-Violent Felonies has increased by 7 percentage points since FY16.





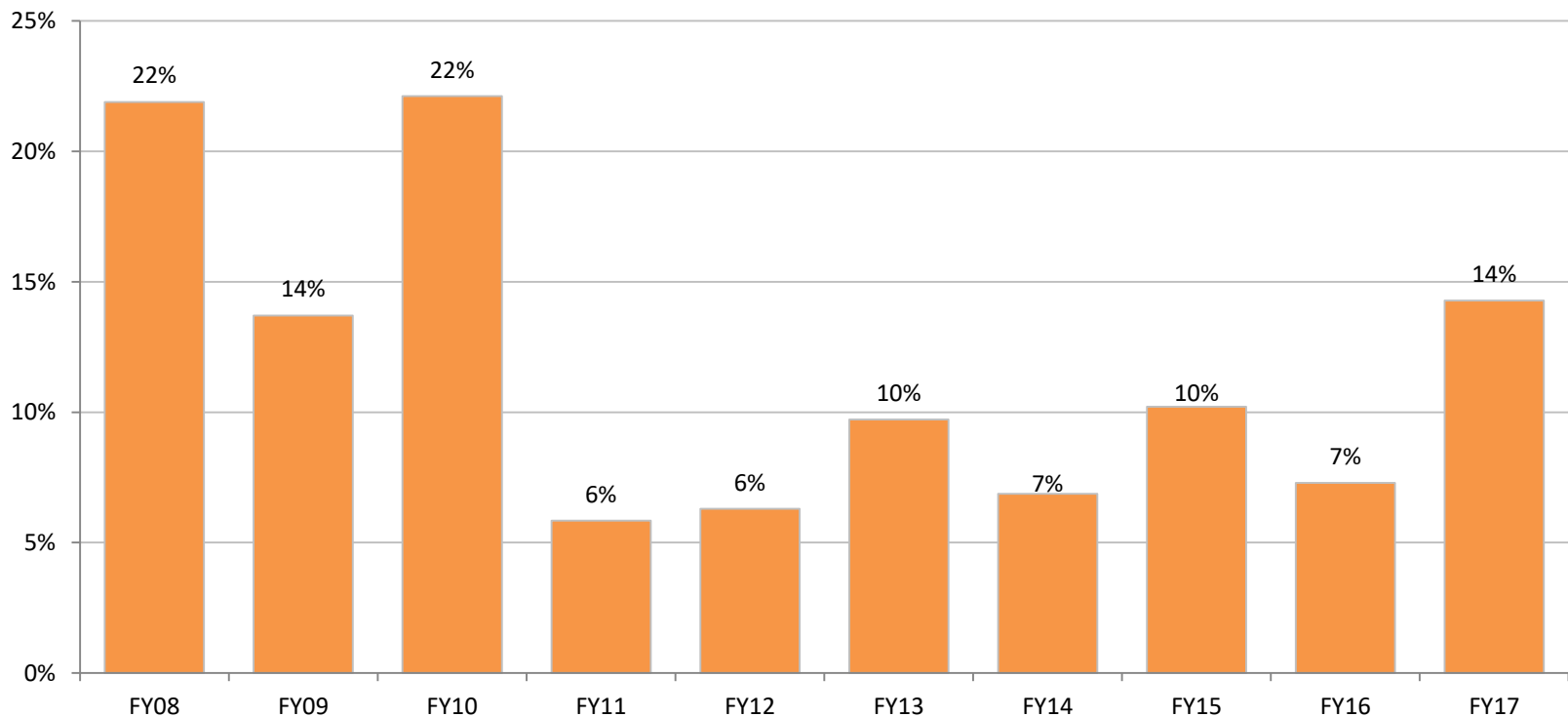
# The Rate of Juveniles Committed for Crimes of Violence Has Increased in the Southern Region

- Crimes of Violence make up 6% of new commitments in FY 2017 in the Southern Region.



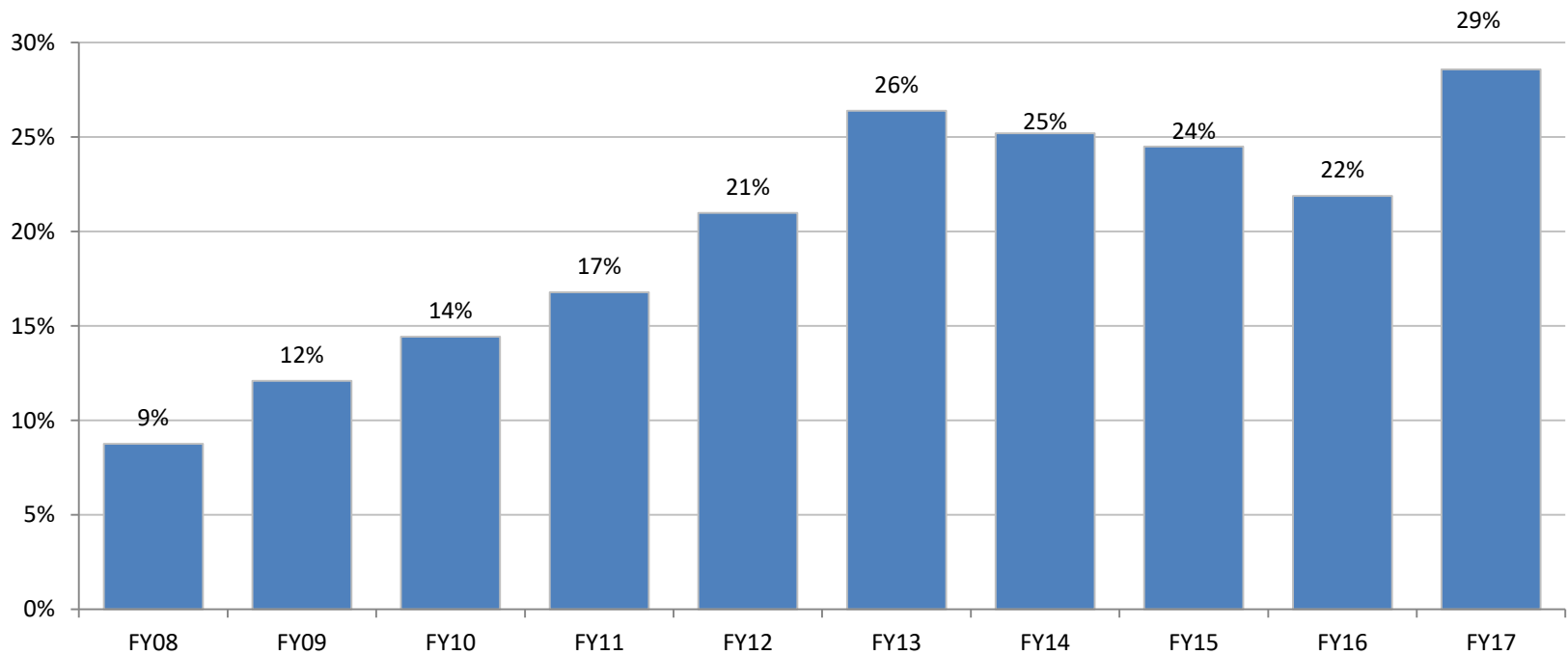
# The Rate of Juveniles Committed for Non-Violent Felonies has Decreased in Southern Region

- Non-Violent felonies decreased 8% over ten years in the Southern Region.



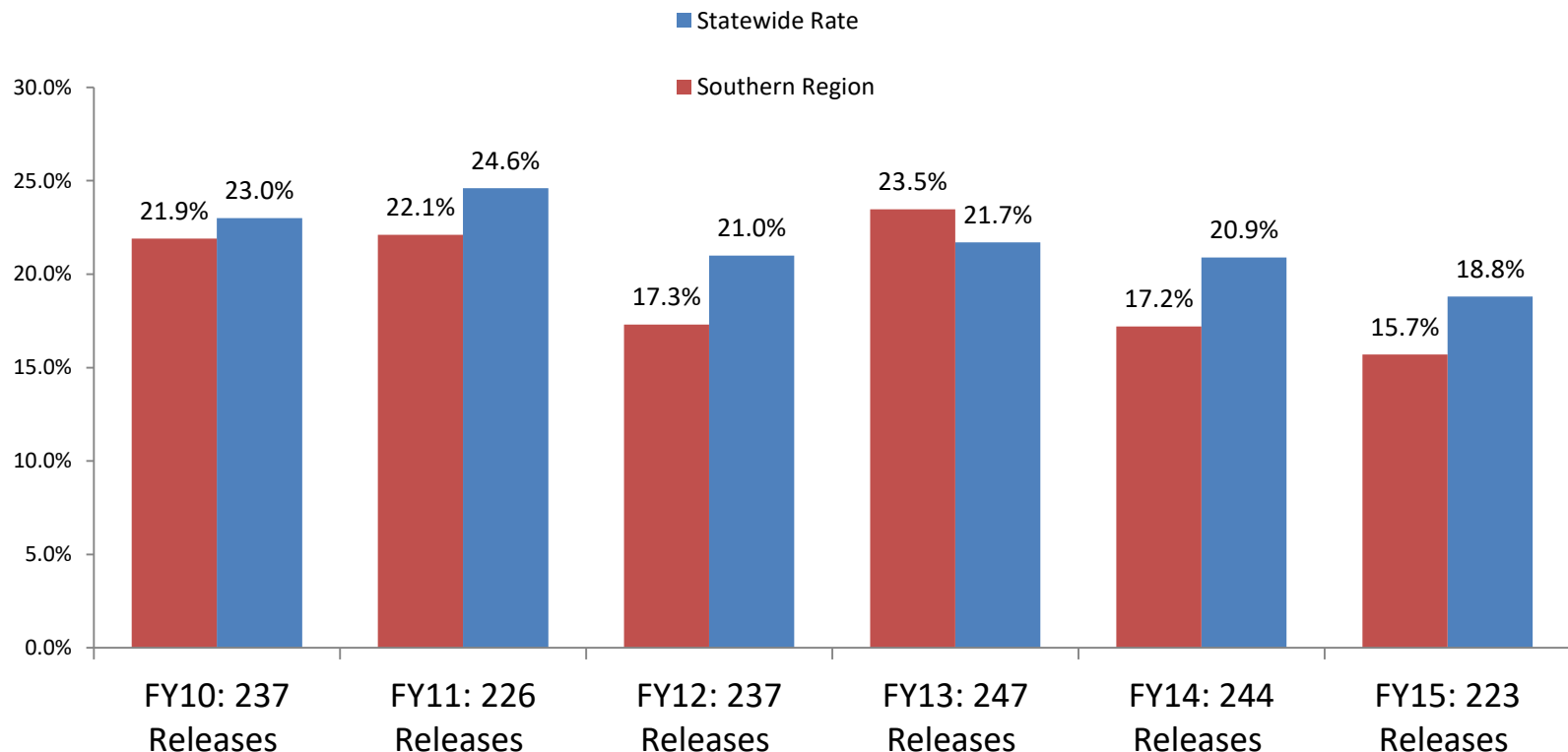
# The Rate of Juveniles Committed for Violations of Probation has Declined in the Southern Region

- The rate of new commitments for Violations of Probation increased 20 percentage points to 29% in ten years to 29% in FY2017.



# Recidivism Rates for Southern Region DJS Committed Youth Have Declined in Recent Years

- 15.7% of Southern Region youth released from committed placement in FY15 had a new offense within a year that resulted in a delinquent adjudication or criminal conviction, a slight decrease of 1.5 percentage points from FY14.
- The Statewide rate was 18.8% in FY15, down 2.1 points from FY14.



# Recidivism Rates for Southern Region DJS Probation Youth Have Increased in The Past Year

- 17.7% of Southern Region youth placed on probation for the first time in FY15 had a new offense within a year that resulted in a delinquent adjudication or criminal conviction, a increase of 1.8 points from FY14.
- The Statewide rate was 18.2% in FY15, down 7.2 points from FY14.

