

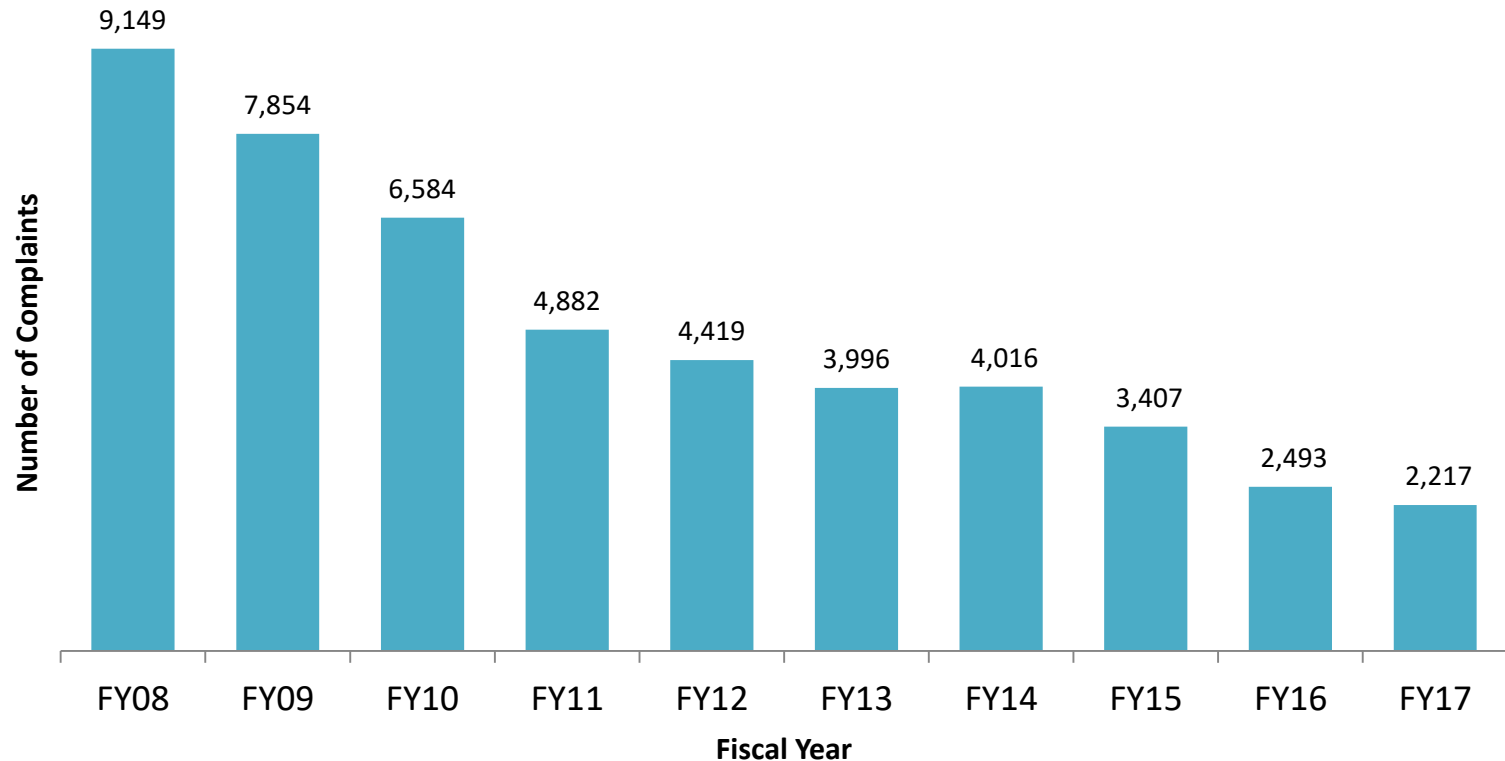


Baltimore City Juvenile Services Long Term Trends

DJS Office of Research and Evaluation, January 2018

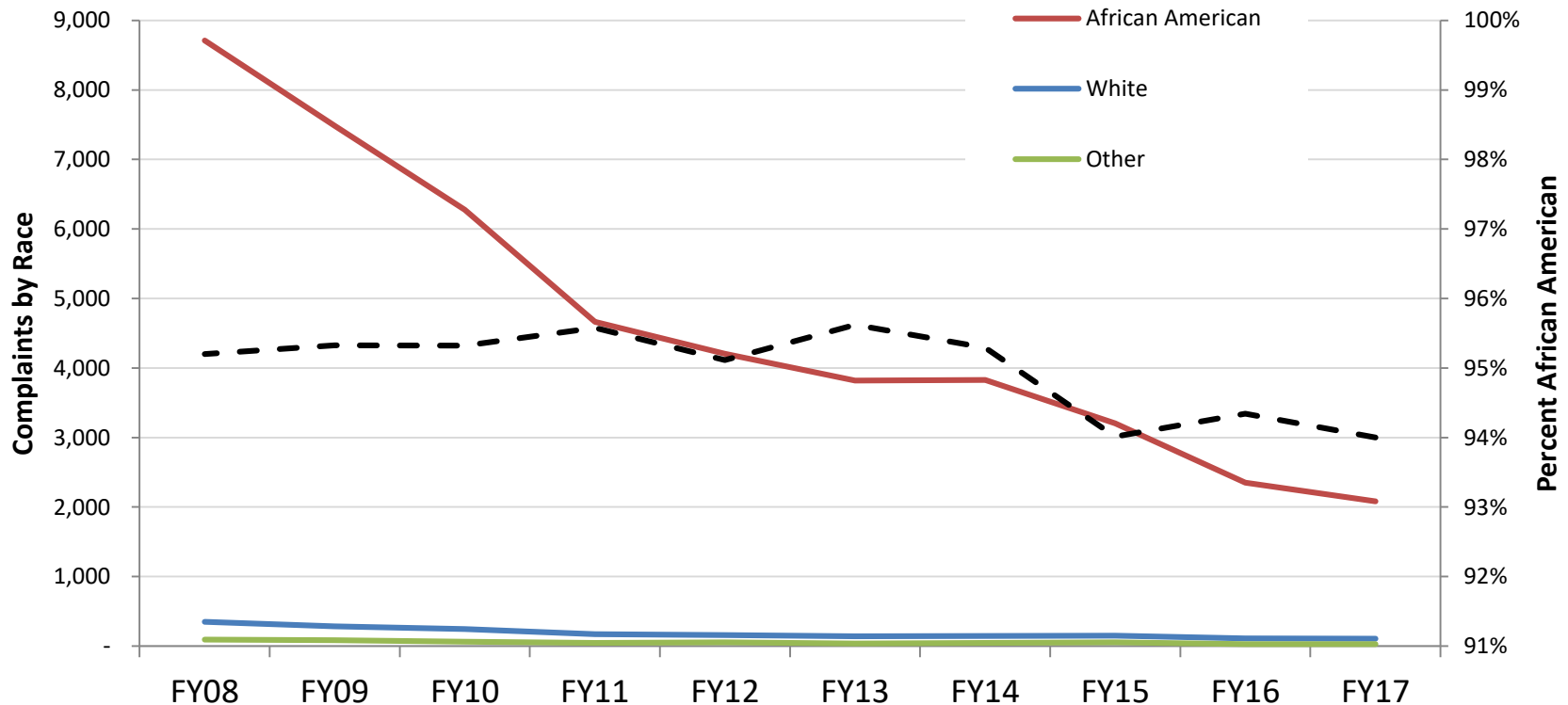
Baltimore City Juvenile Complaints Have Declined Significantly

- Baltimore City complaints referred to DJS Intake declined 75.8% in ten years.
- Statewide complaints declined 57.9% over the same period.



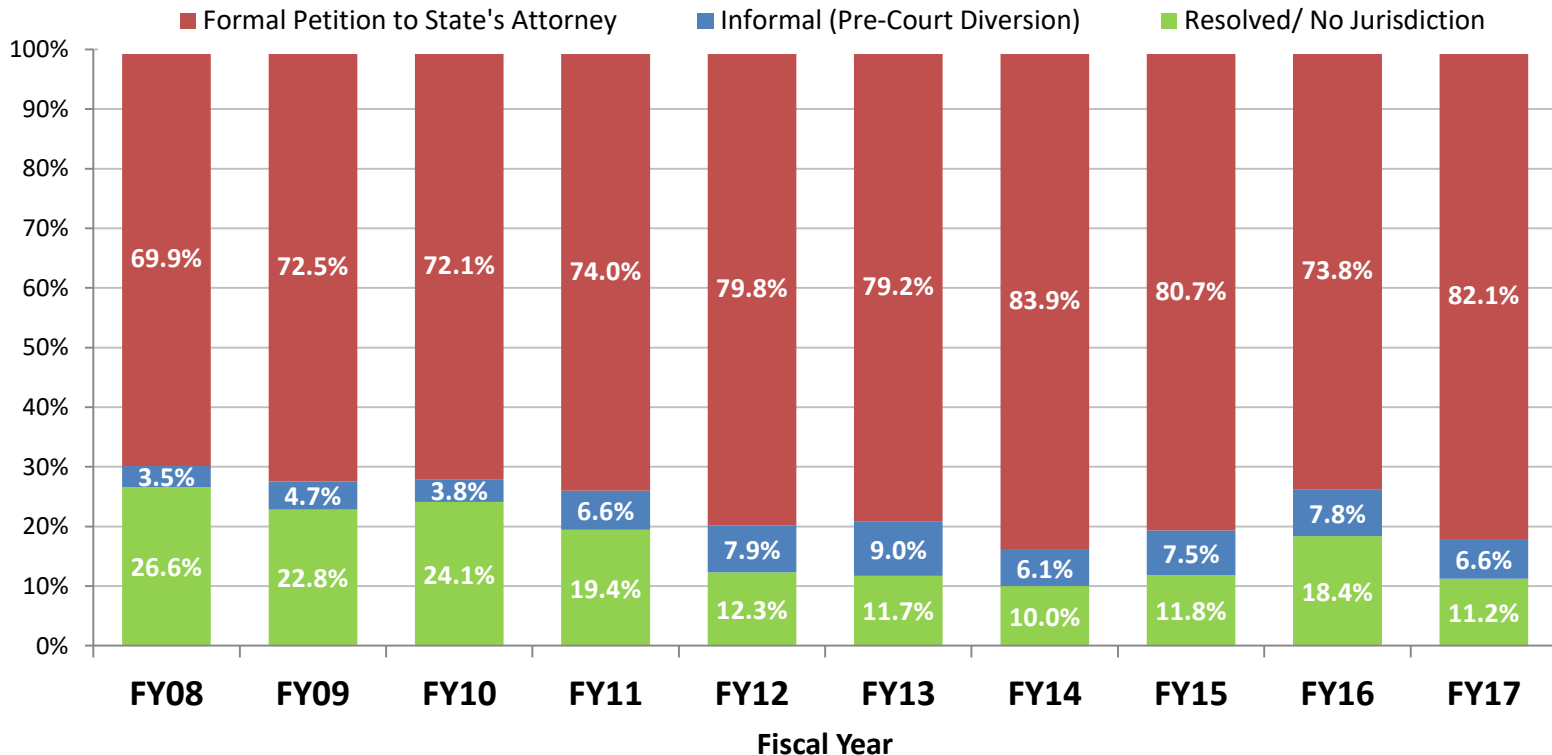
Juvenile Complaints in Baltimore City Have Declined for All Race/Ethnicities

- Complaints for Baltimore City African American youth declined 76.1%, and declined 69.3% for white youth.
- African American youth comprise 94% of complaints which is similar to FY08.
- African American youth comprise 72.0% of the general population.



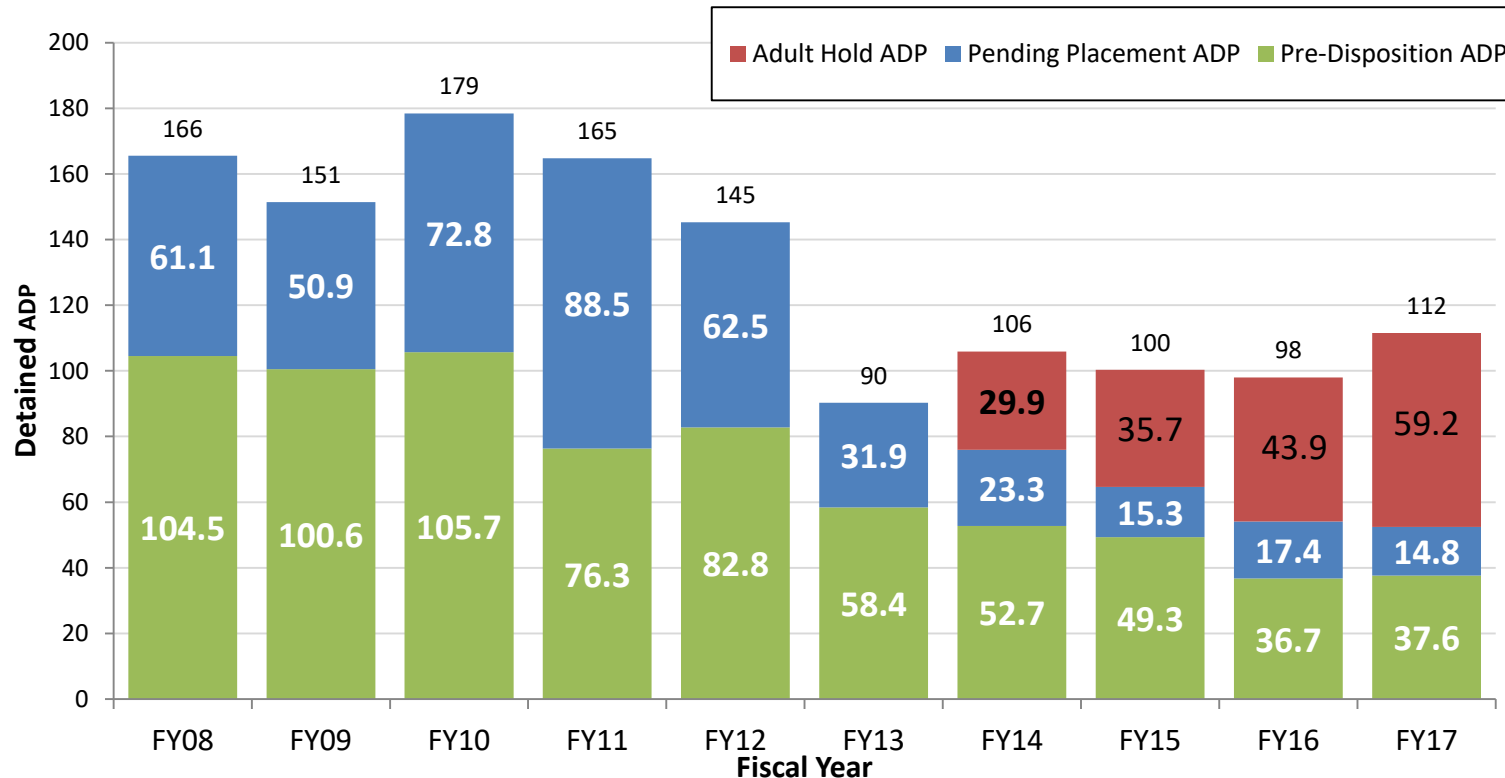
The Proportion of Baltimore City Complaints Referred to Court Increased

- 82.1% of Baltimore City complaints were referred to court by DJS Intake in FY17, 12.2% more than in FY08. Statewide 46.7% were referred to court.
- 6.6% of Baltimore City complaints were diverted to an informal DJS pre-court case. Statewide 14.6% were diverted.



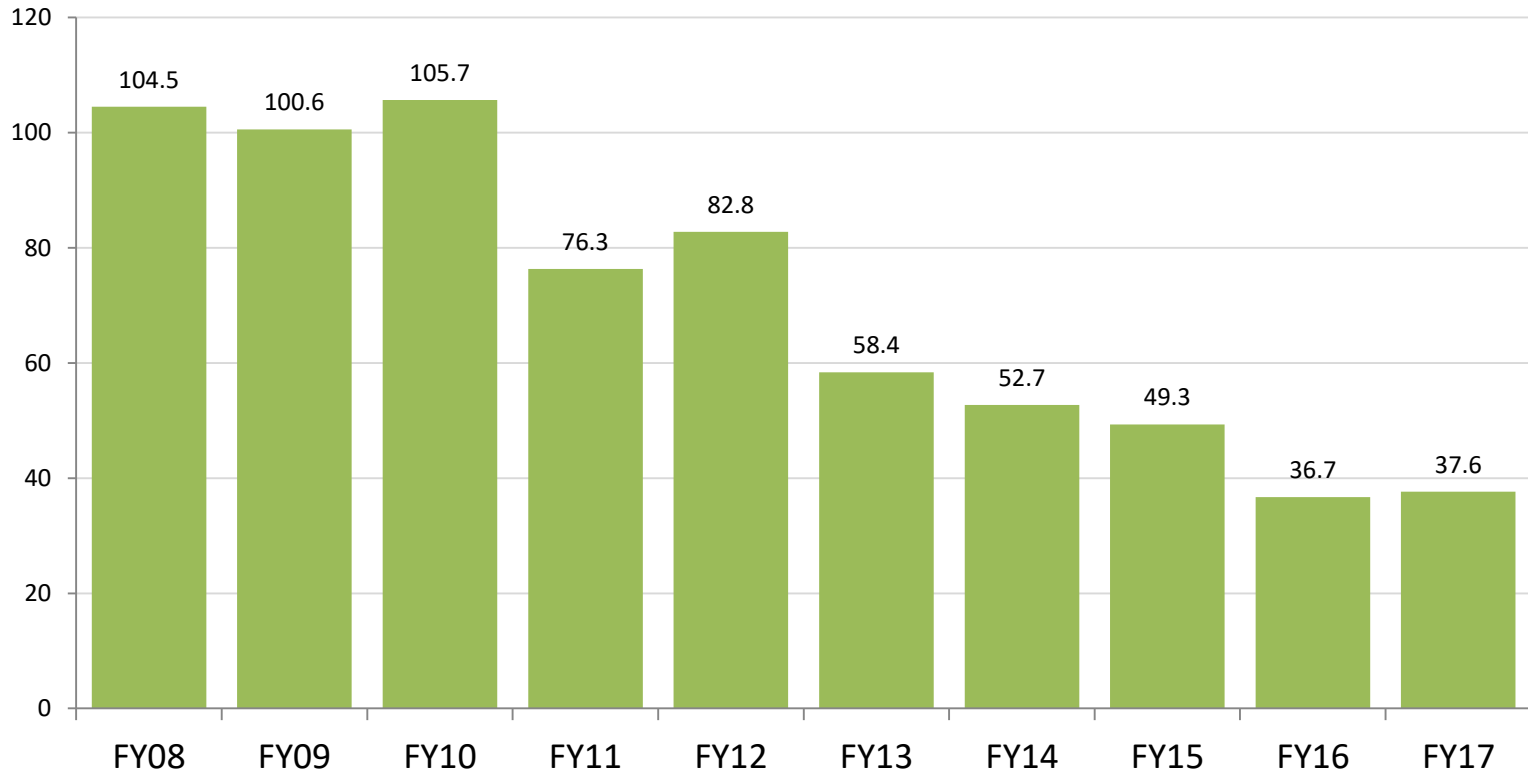
Baltimore City Detention Population Has Declined Significantly

- Baltimore City daily population in DJS detention declined 32.5% to 112 in FY17. The statewide detention population declined over the same period.
- Cases detained for the Adult Court now make up 52.9% of the DJS detained population in Baltimore City.



Baltimore City Youth Population In Detention Pre-Disposition Has Declined Significantly

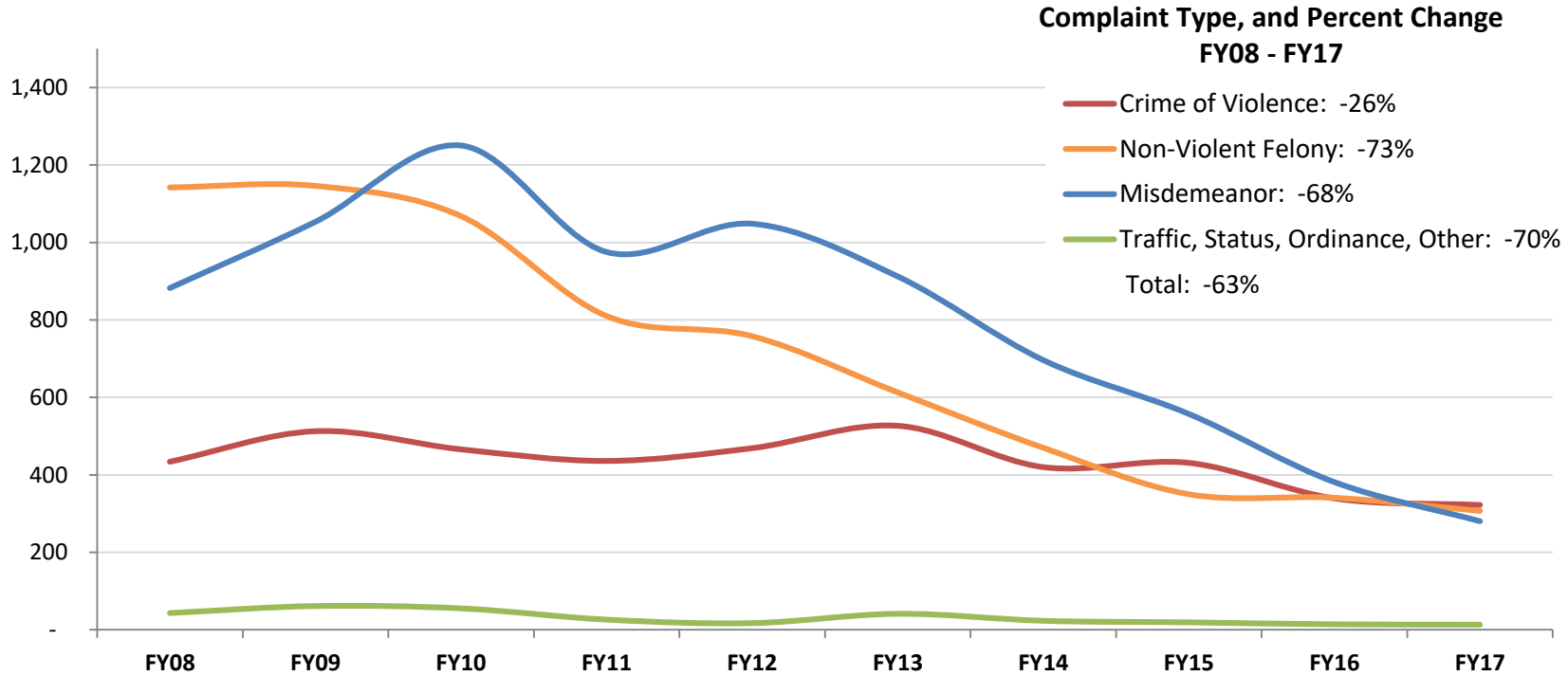
- The Baltimore City juvenile pre-dispositional detained population declined 64.0% in ten years to 37.6 youth in FY 2017.



Baltimore City's Pre-Disposition Detention Placements Have Decreased for Most Complaint Types

- Youth detained pending disposition for misdemeanors has decreased 68.3% over ten years.
- Youth detained pending disposition for crimes of violence has decreased 25.8% over ten years.

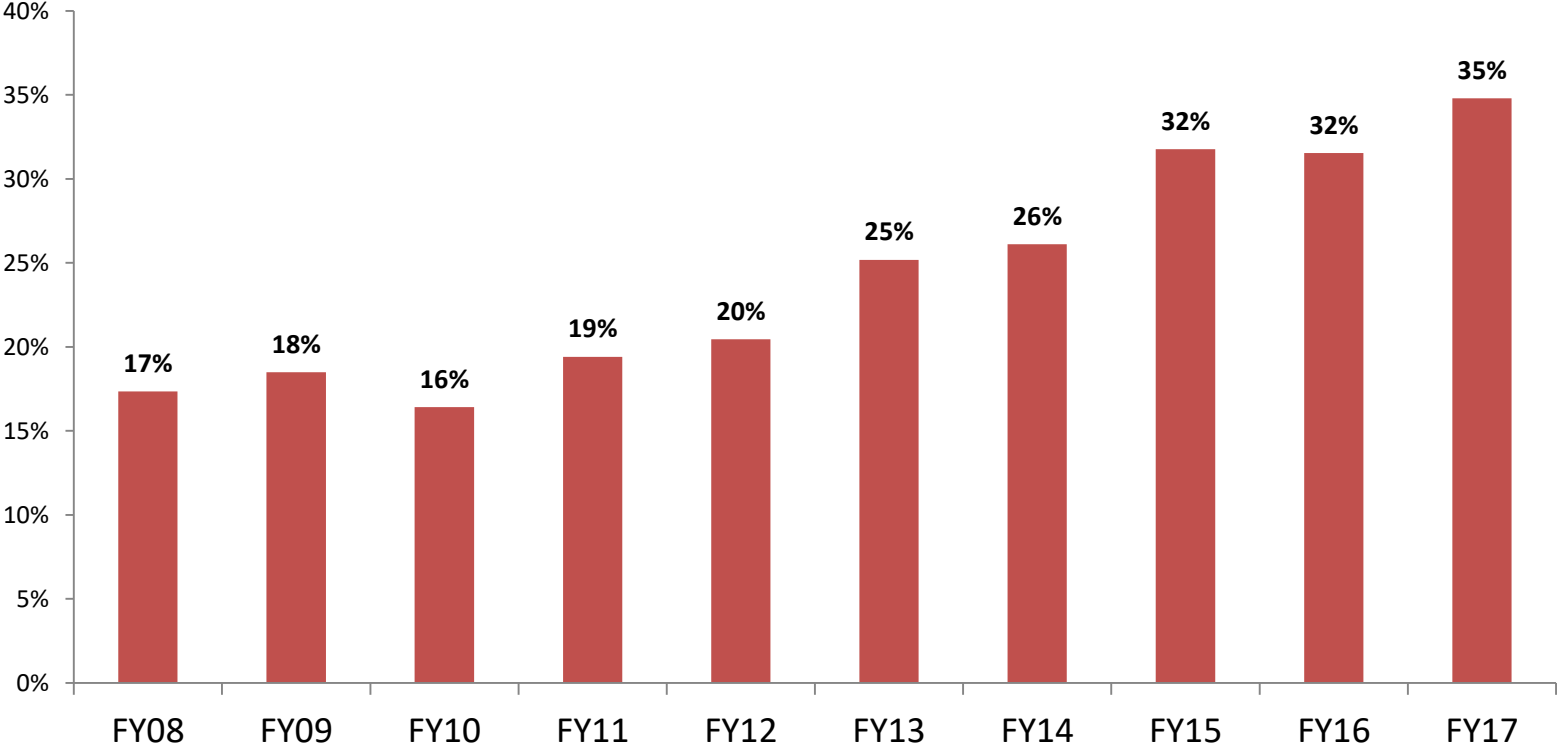
Pre-D Detention Admissions by Complaint Type, FY08 - FY17



Crimes of Violence Make Up an Increasing Percent of Detention Placement Offenses

- The proportion of youth detained pre-disposition for Crimes of Violence complaints has increased 18 percentage points over ten years.

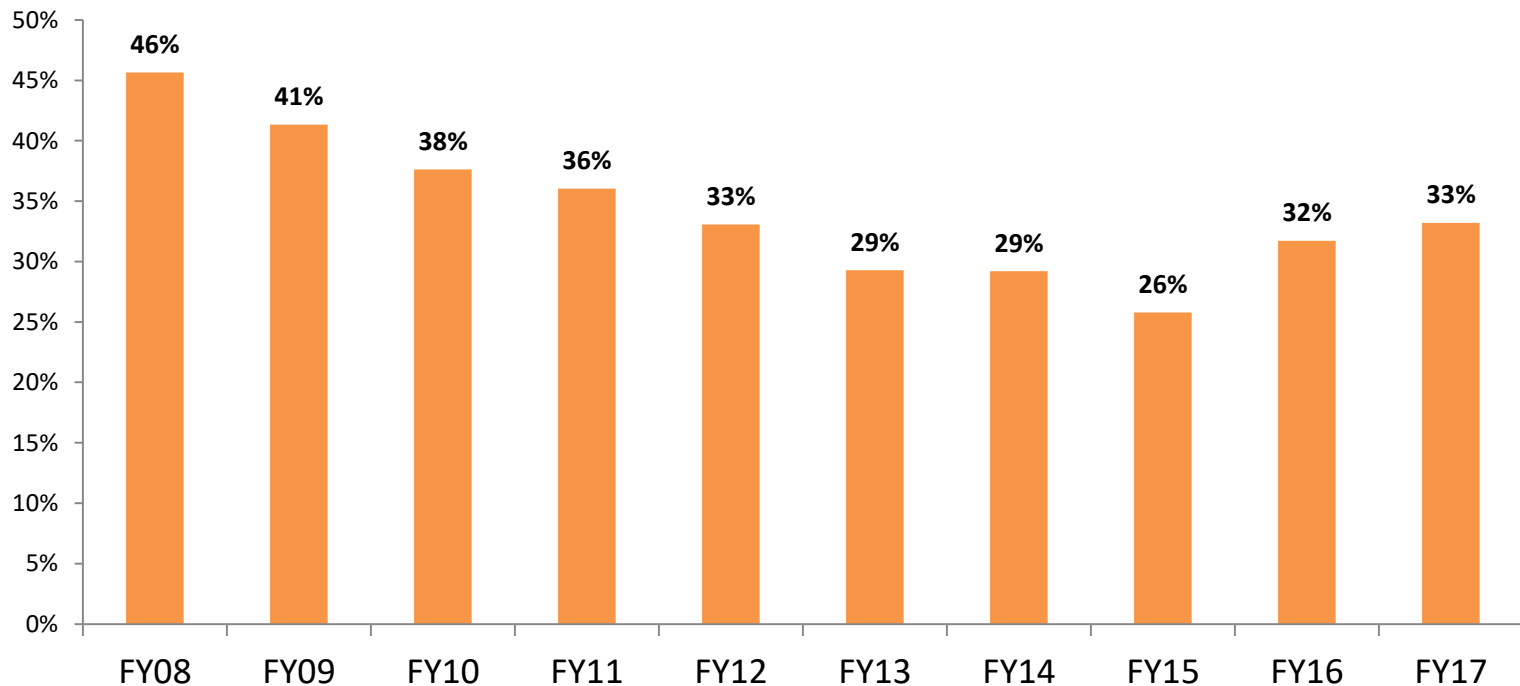
Proportion of Pre-D Detention Admissions For Crimes of Violence, FY08 - FY17



Detention Placements for Non-Violent Felonies are Declining

- The percent of youth detained pre-disposition for Non-Violent Felony complaints has decreased 13% over ten years.
- The detained population is increasingly comprised of youth with violent crimes complaints.

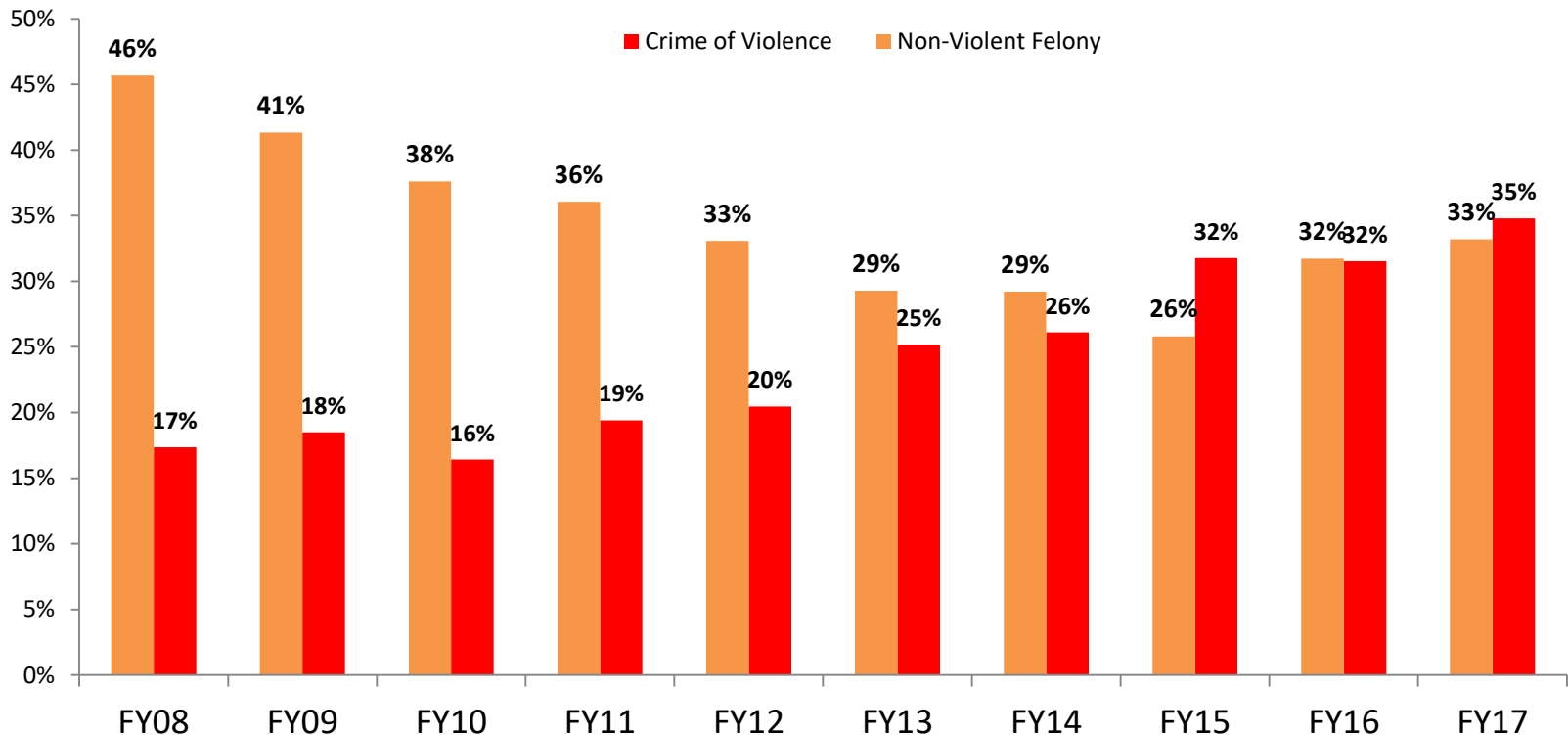
Proportion of Pre-D Detention Admissions For Non-Violent Felonies, FY08 - FY17



Baltimore City's Pre-D Detention Population

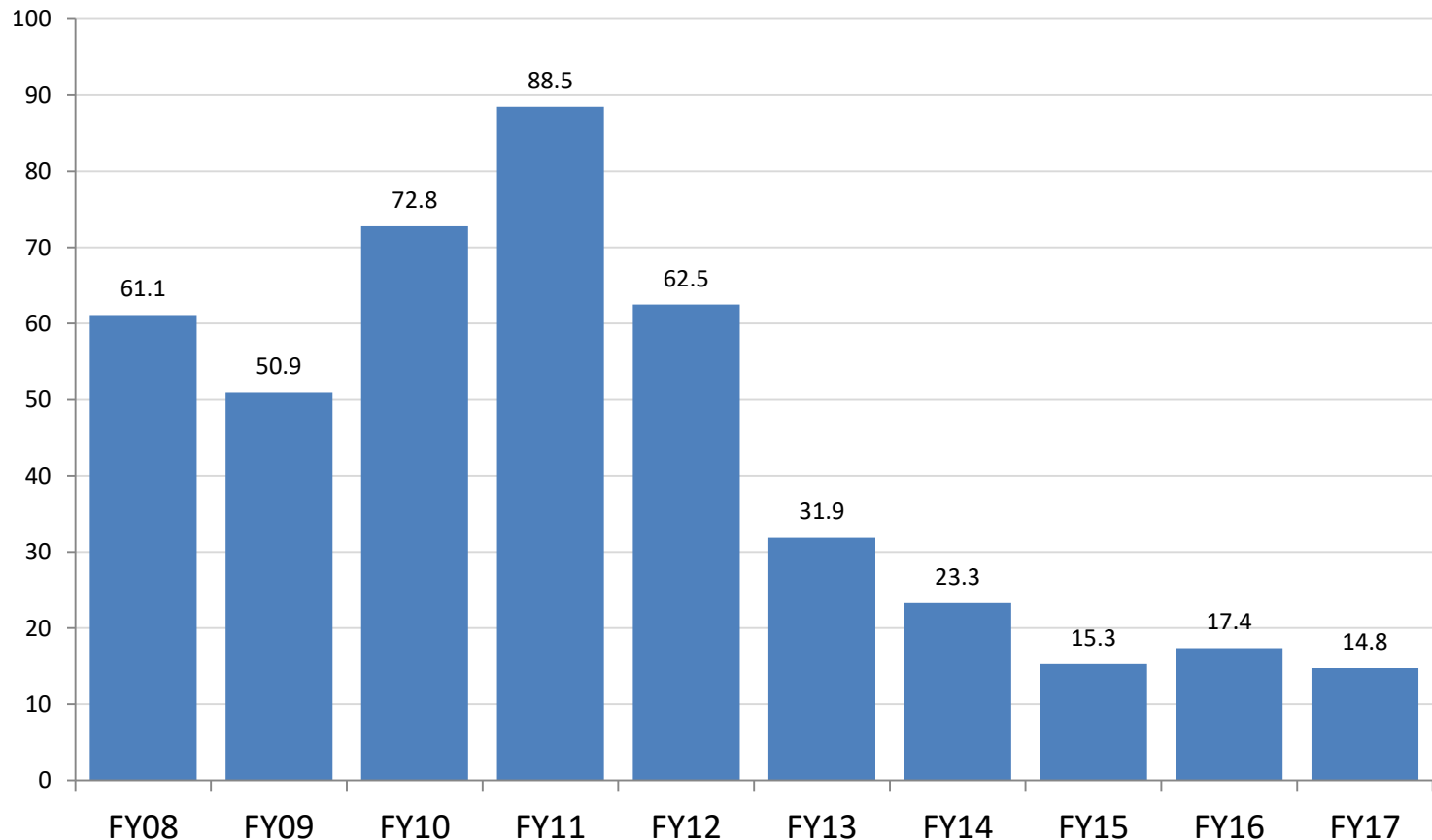
- Youth detained pre-disposition for Crimes of Violence increased 18% over ten years.
- Pre-disposition for non-violent felonies decreased 13% over ten years.

Proportion of Pre-D Detention Admissions For Non-Violent Felonies, FY08 - FY17



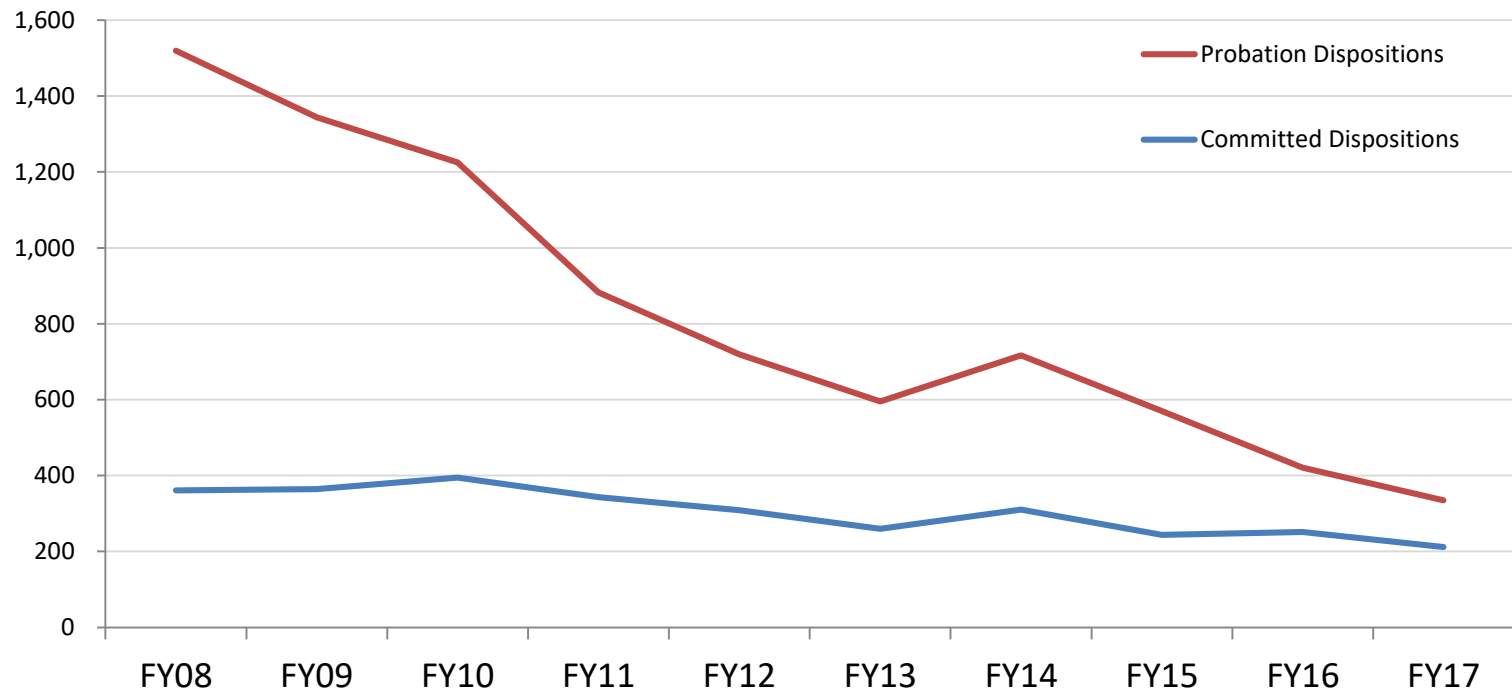
Baltimore City Youth In Detention Pending a Committed Placement Has Declined Dramatically

- Juvenile court pending placement population declined 75.8% in ten years to 14.8 youth in FY 2017.



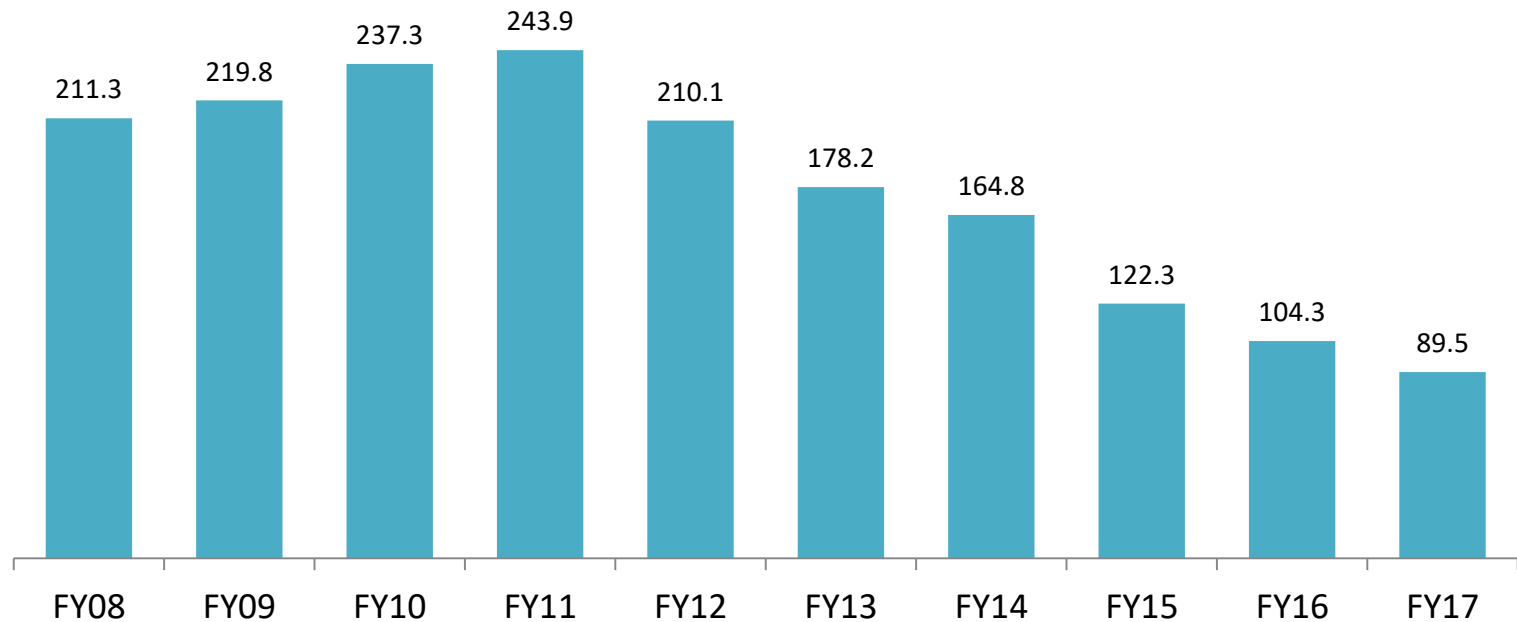
Juvenile Probation and Commitment Orders Have Declined

- Baltimore City Juvenile probation orders declined 77.9% in ten years. Statewide probation orders declined 54.2% over the same period.
- Baltimore City juvenile commitments declined 41.3% in ten years. Statewide commitments declined 34.0% over the same period.



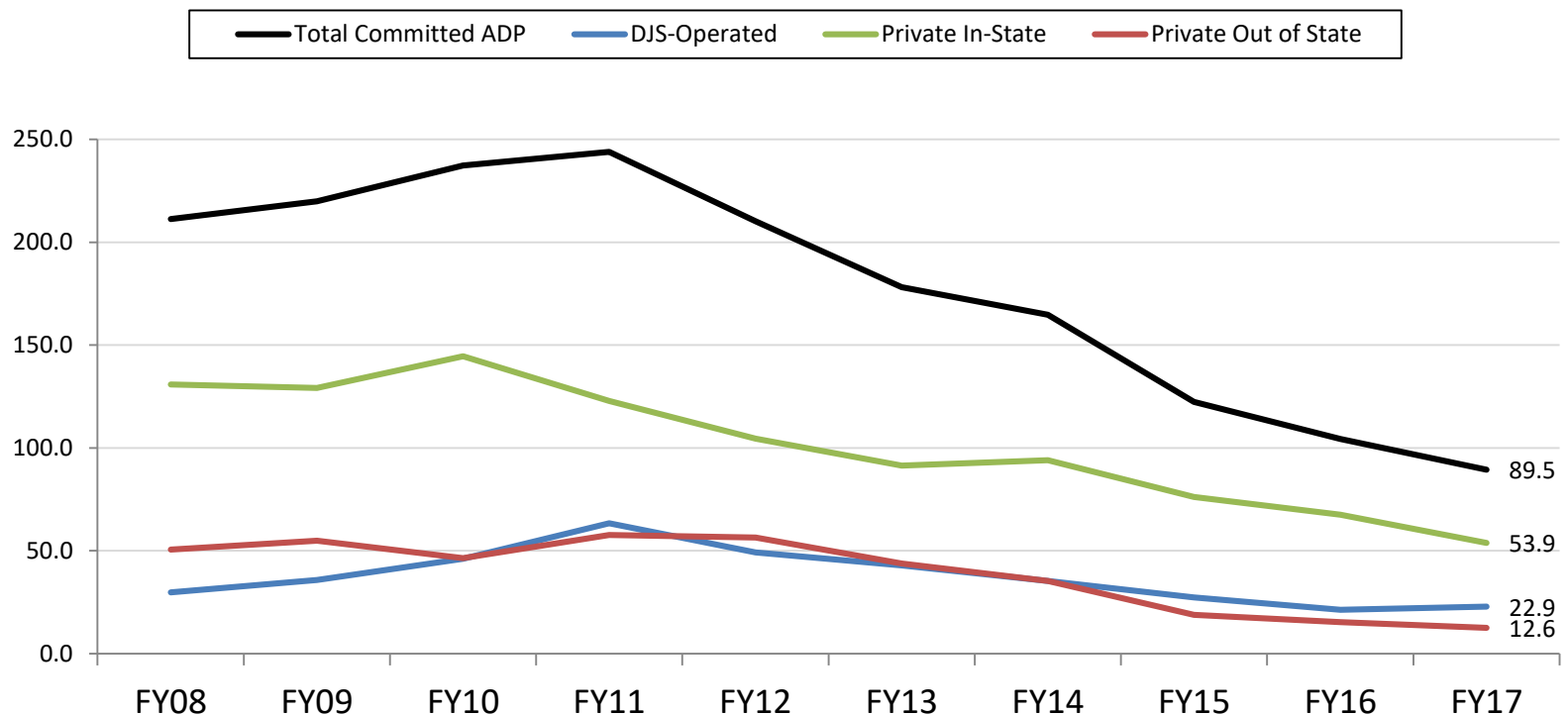
Average Committed Out-of-Home Population Has Declined Significantly in Baltimore City

- The overall daily population of Baltimore City youth committed by the juvenile court to out of home placement declined 57.6% over ten years, from 211.3 in FY08 to 89.5 in FY17.
- Statewide average committed population declined 50.9% over the same period.



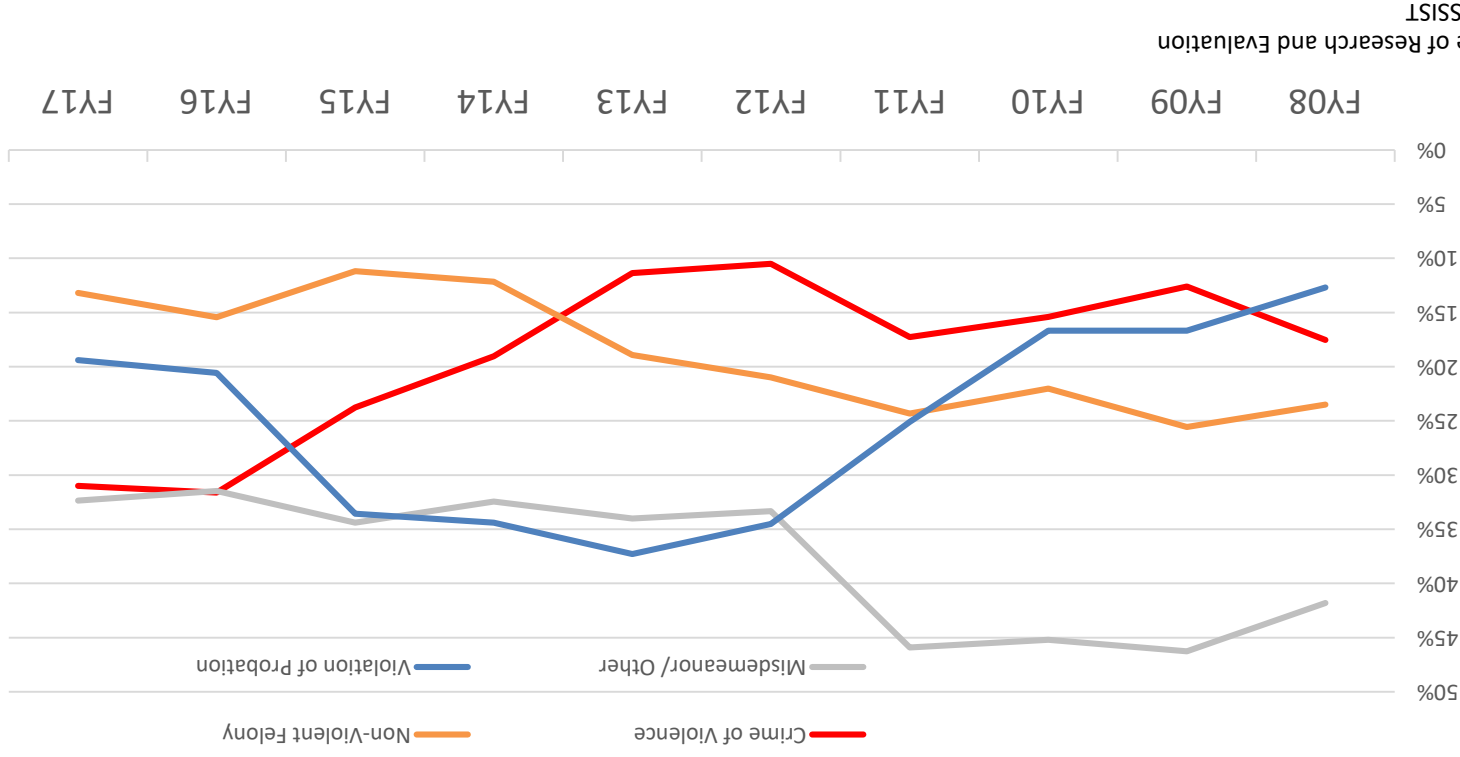
Baltimore City's Committed Youth Population Has Decreased for All Facility Types

- Overall committed out-of-home population has declined 57.6% since FY08, and over 63.3% since the high of 243.9 in FY11.
- DJS-Operated ADP decreased 23.2%, and Private In-State has declined 58.8% since FY08.
- Out of State committed average population declined 75.1% since FY08.



The Rate of Juveniles Committed for Low-Level Offenses Has Declined

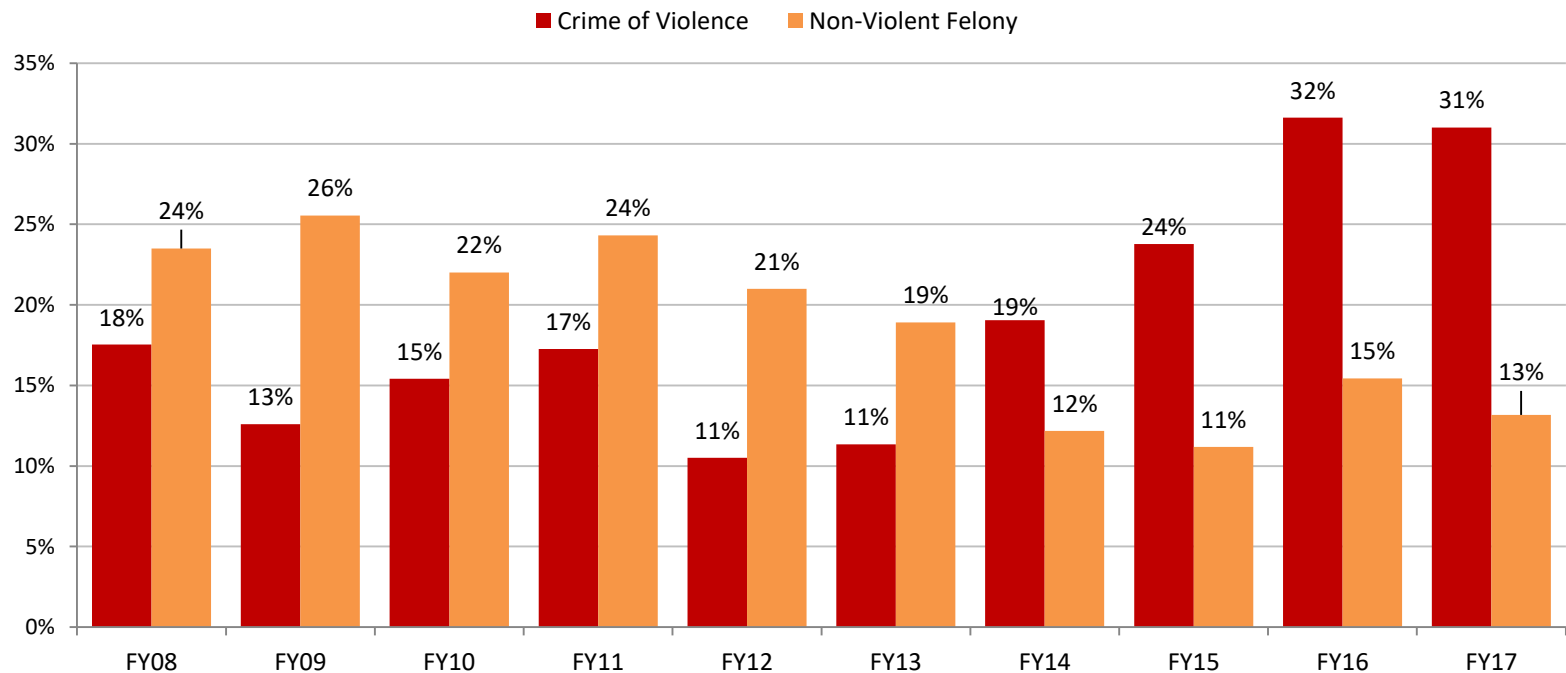
- The proportion of new commitments for crimes of violence increased 13% over ten years.
- The proportion of new commitments for non-violent felony decreased 11% in the last year.



Prepared by: Office of Research and Evaluation
Data Source: DJS ASSIST

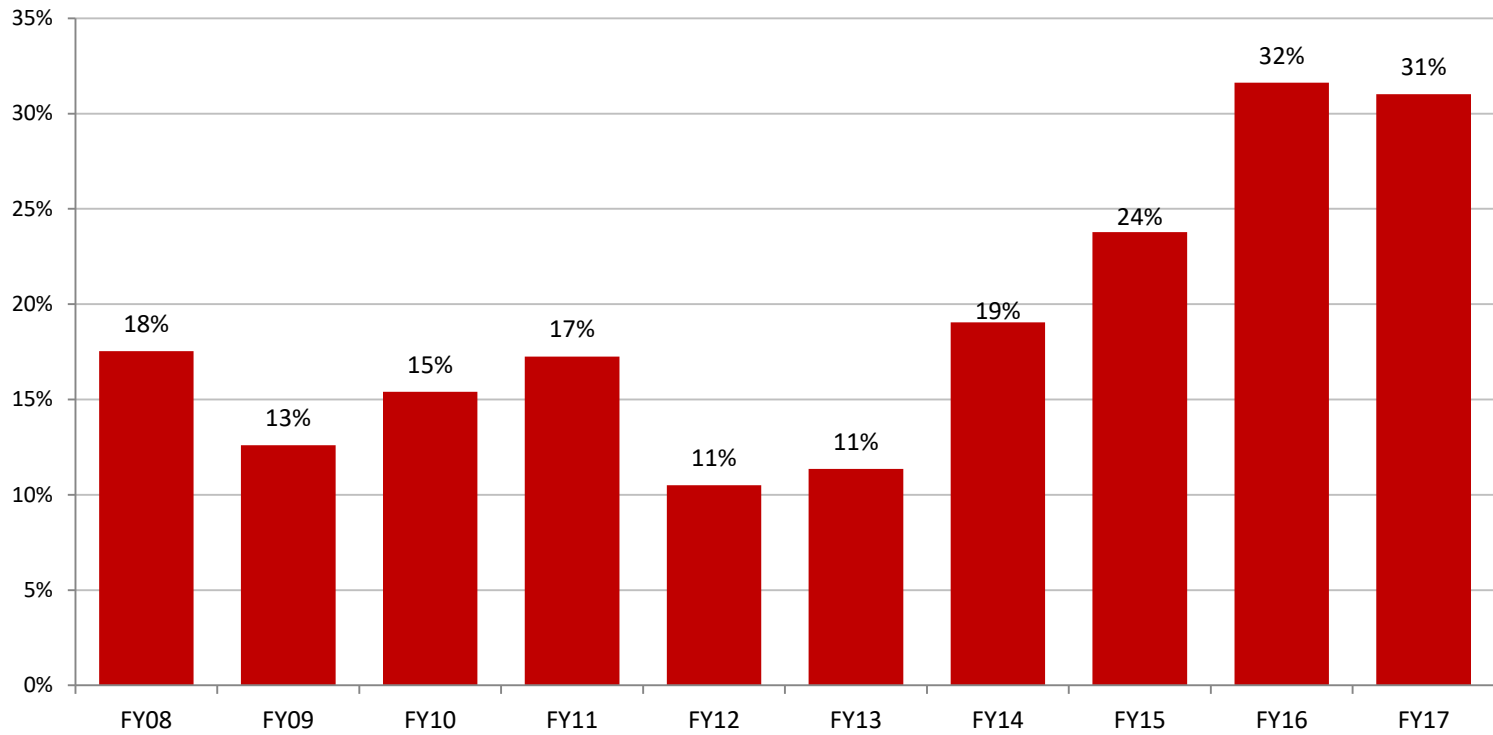
The Rate of Juveniles Committed for Crimes of Violence has Increased in Baltimore City

- Crimes of Violence made up nearly a third (31%) of new commitments in FY 2017.
- The rate of juveniles committed for Non-Violent Felonies has slightly decreased in FY 2017.



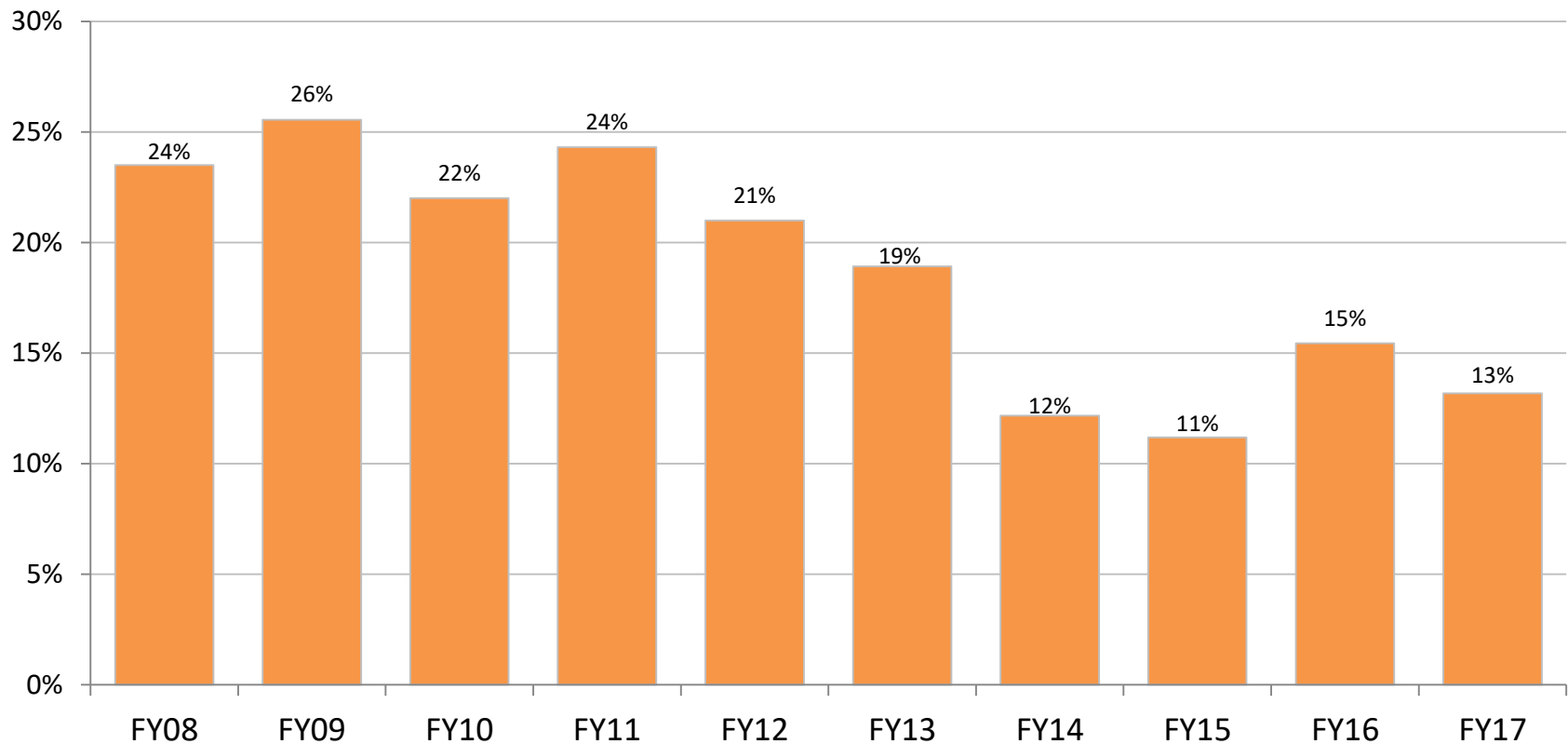
The Rate of Juveniles Committed for Crimes of Violence has Increased in Baltimore City

- Crimes of Violence made up nearly a third (31%) of new commitments in FY 2017.



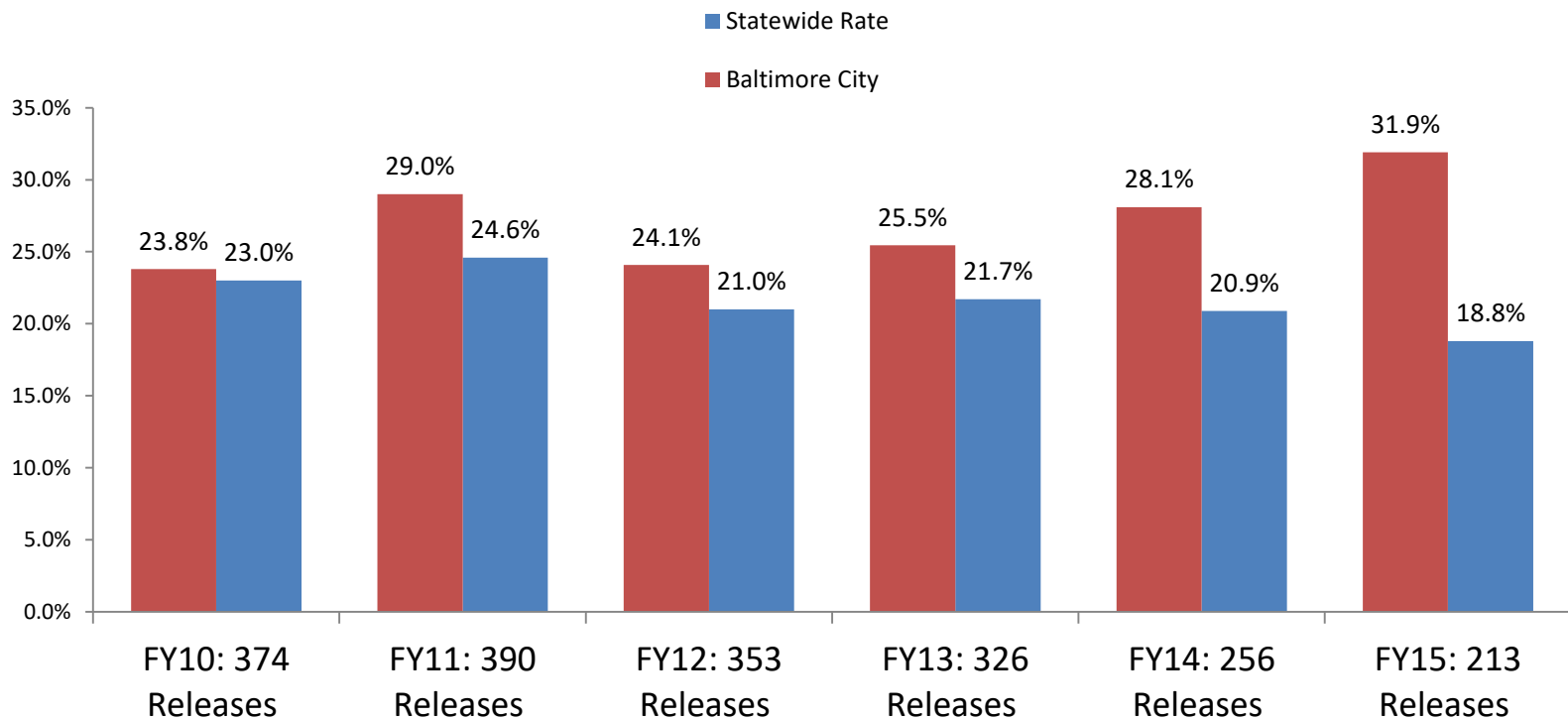
The Rate of Juveniles Committed for Non-Violent Felonies has Increased in Baltimore City

- Non-violent felonies decreased 11% over ten years.



Recidivism Rates for Baltimore City DJS Committed Youth Have Increased in Recent Years

- 31.9% of Baltimore City youth released from committed placement in FY15 had a new offense within 12-months that resulted in a delinquent adjudication or criminal conviction, a slight increase of 3.8 points from FY14.
- The Statewide rate was 18.8% in FY15, down 2.1 points from FY14.



Recidivism Rates for Baltimore City DJS Probation Youth Have Declined Significantly in The Past Year

- 19.6% of Baltimore City youth placed on probation for the first time in FY15 had a new offense within 12-months that resulted in a delinquent adjudication or criminal conviction, a decrease of 8.1 points from FY14.
- The Statewide rate was 18.2% in FY15, down 0.9 points from FY14.

