

**MARYLAND**  
**DEPARTMENT OF JUVENILE JUSTICE**

---

**STATISTICAL REPORT**

---

**FISCAL YEAR**  
**1998**

**Parris Glendening**  
*Governor*

**Kathleen Kennedy Townsend**  
*Lt. Governor*

**Gilberto de Jesus**  
*Secretary*

**October 1999**

**Office of Policy and Research**

## INTRODUCTION

The Maryland Department of Juvenile Justice's Office of Policy and Research is pleased to present its 1998 Annual Statistical Report. The Annual Statistical Report brings together, in a single volume, descriptive statistics<sup>1</sup> of the Maryland Department of Juvenile Justice (DJJ). This report serves as an essential reference book. The numbers contained in this report are used in capital planning, three-year planning and budget documents. Executive, professional, and legislative staff as well as the public rely on these statistics. The Annual Statistical Report contains two sections.

**Section One** of the report provides the intake profile, which includes case-related information from referral to the court disposition stage. In FY 1998, the Department's Intake Officers handled 55,732 cases. This number of cases represents 39,898 youth. The intake process determines if a youth requires formal court intervention or can be served by pre-court supervision or by processes known as resolving or disapproving the case at intake. A case is counted each time a youth is referred on a new charge during the year.

**Section Two** provides information about services provided to youths in nonresidential and residential programs. This section contains statistics on DJJ contracted programs, community supervision, and residential services and secure commitment programs. In FY 1998, the Department served 6,105 youths in out of home placements, including secure detention and shelter care programs. A separate table of contents is provided for Sections One and Two.

---

<sup>1</sup> The statistics included in this report have been subject to a detailed quality assurance process that involved removing erroneous cases and minimizing the occurrences of "missing" data. Because of this quality assurance review, the statistics presented in this report may slightly vary from those included in earlier Departmental documents.

## Section One

### Intake Data

# TABLE OF CONTENTS

## SECTION ONE

Page

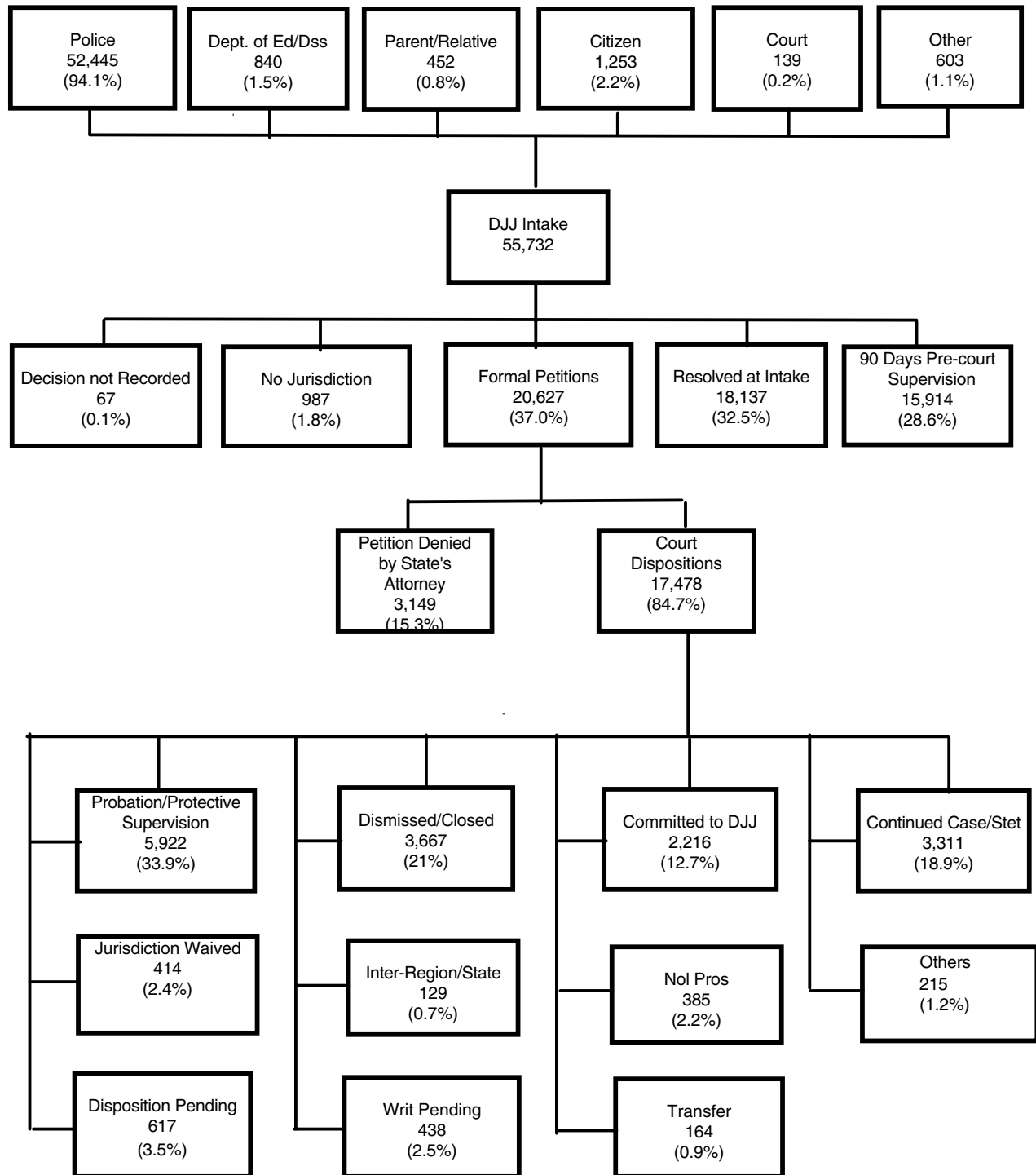
### **FLOW CHART OF CASE REFERRALS** . . . . . i

Table 1	Number and Percent of Intake cases by County of Jurisdiction and by Area: FY 1996 - FY 1998 . . . . .	1
Table 2	Manner of Handling Referrals at Intake by Jurisdiction and by Area: FY 1998 . . . . .	2
Table 3	Rank Order of Formal Cases by County of Jurisdiction: FY 1998 . . . . .	3
Table 4	Number and Percent of Total Intake Cases by Race: FY 1998 . . . . .	3
Table 5	Intake Cases by Race and by County of Jurisdiction: FY 1998 . . . . .	4
Table 6	Manner of Handling Intake Cases by Race and County of Jurisdiction: FY 1998 . . . . .	5
Table 6	Manner of Handling Intake Cases by Race and County of Jurisdiction: FY 1998 . . . . .	6
Table 7	Number and Percent of Total Intake Cases by Gender: FY 1998 . . . . .	7
Table 8	Manner of Handling Intake Cases by Gender and County of Jurisdiction: FY 1998 . . . . .	8
Table 9	Intake Cases by Race, Gender and County of Jurisdiction: FY 1998 . . . . .	9
Table 10	Number and Percent of Total Intake Cases by Age: FY 1998 . . . . .	10
Table 11	Intake Cases by Age and County of Jurisdiction: FY 1998 . . . . .	11
Table 12	Intake Cases by Age and County of Jurisdiction for African-American Youth: FY 1998 . . . . .	12
Table 13	Intake Cases by Age and County of Jurisdiction for Caucasian Youth: FY 1998 . . . . .	13
Table 14	Intake Cases by Age and County of Jurisdiction for Hispanic Youth: FY 1998 . . . . .	14
Table 15	Intake Cases by Age and County of Jurisdiction for Males: FY 1998 . . . . .	15
Table 16	Intake Cases by Age and County of Jurisdiction for Females: FY 1998 . . . . .	16
Table 17	Number & Percent of Total Intake Cases by Referral Source: FY 1998 . . . . .	17
Table 18	Intake Cases by Referral Source & County of Jurisdiction: FY 1998 . . . . .	17

Table 19	Intakes Cases - Offense by Offense Type: FY 1996-FY 1998 .....	18
Table 20	Intake Cases by Alleged Offenses & County of Jurisdiction: FY 1998 .....	19
Table 20	Intake Cases by Alleged Offenses & County of Jurisdiction: FY 1998 .....	20
Table 20	Intake Cases by Alleged Offenses & County of Jurisdiction: FY 1998 .....	21
Table 21	Intake Cases by Alleged Offenses & County of Residence: FY 1998 .....	22
Table 21	Intake Cases by Alleged Offenses & County of Residence: FY 1998 .....	23
Table 21	Intake Cases by Alleged Offenses & County of Residence: FY 1998 .....	24
Table 22	Intake Cases by Alleged Offenses & County of Offense: FY 1998 .....	25
Table 22	Intake Cases by Alleged Offenses & County of Offense: FY 1998 .....	26
Table 22	Intake Cases by Alleged Offenses & County of Offense: FY 1998 .....	27
Table 23	Intake Cases by Alleged Offenses and County of Jurisdiction for African-American Youth: FY 1998 .....	28
Table 23	Intake Cases by Alleged Offenses and County of Jurisdiction for African-American Youth: FY 1998 .....	29
Table 23	Intake Cases by Alleged Offenses and County of Jurisdiction for African-American Youth: FY 1998 .....	30
Table 24	Intake Cases by alleged Offenses and County of Jurisdiction for Caucasian Youth: FY 1998 .....	31
Table 24	Intake Cases by Alleged Offenses and County of Jurisdiction for Caucasian Youth: FY 1998 .....	32
Table 24	Intake Cases by Alleged Offenses and County of Jurisdiction for Caucasian Youth: FY 1998 .....	33
Table 25	Intake Cases by Alleged Offenses and County of Jurisdiction for Hispanic Youth: FY 1998 .....	34
Table 25	Intake Cases by Alleged Offenses and County of Jurisdiction for Hispanic Youth: FY 1998 .....	35
Table 25	Intake Cases by Alleged Offenses and County of Jurisdiction for Hispanic Youth: FY 1998 .....	36
Table 26	Intake Cases by Alleged Offenses and County of Jurisdiction for Males: FY 1998 .....	37
Table 26	Intake Cases by Alleged Offenses and County of Jurisdiction for Males: FY 1998 .....	38
Table 26	Intake Cases by Alleged Offenses and County of Jurisdiction for Males: FY 1998 .....	39
Table 27	Intake Cases by Alleged Offenses and County of Jurisdiction for Females: FY 1998 .....	40

Table 27	Intake Cases by Alleged Offenses and County of Jurisdiction for Females: FY 1998 . . . . .	41
Table 27	Intake Cases by Alleged Offenses and County of Jurisdiction for Females: FY 1998 . . . . .	42
Table 28	Alleged Offense Rates Per 1,000 Population by Offense Category & County of Residence: FY 1998 . . . . .	43
Table 29	Alleged Offense Rates Per 1,000 Population by Offense Category & County of Offense: FY 1998 . . . . .	44
Table 30	Rates of Total and Delinquent Referrals Per 1,000 Youth Population: FY 1998 . . . . .	45
Table 31	Court Disposition of Formalized Cases by Gender: FY 1998 . . . . .	46
Table 32	Court Disposition of Formalized Cases by Race: FY 1998 . . . . .	47

## Flow Chart of Case Referrals in the Maryland Juvenile Justice System FY 1998



**Table 1**  
**Number and Percent of Intake Cases by County of Jurisdiction and by Area**  
**FY 1996 - FY 1998**

Area	1996 Cases	Percent of Cases	1997 Cases	Percent of Cases	1998 Cases	Percent of Cases	Percent Change '97 to '98
1. Baltimore City	16336	28.2	13880	23.9	11428	20.5	-17.7%
<b>Area 1 Total</b>	<b>16336</b>	<b>28.2</b>	<b>13880</b>	<b>23.9</b>	<b>11428</b>	<b>20.5</b>	<b>-17.7%</b>
2. Anne Arundel	4878	8.4	5315	9.2	5730	10.3	7.8%
Baltimore	8596	14.8	9316	16.1	7934	14.2	-14.8%
Carroll	1221	2.1	1167	2.0	1183	2.1	1.4%
Harford	1274	2.2	1494	2.6	2096	3.8	40.3%
Howard	1642	2.8	1791	3.1	1980	3.6	10.6%
<b>Area 2 Total</b>	<b>17611</b>	<b>30.4</b>	<b>19083</b>	<b>32.9</b>	<b>18923</b>	<b>32.6</b>	<b>-0.8%</b>
3. Allegany	1095	1.9	1252	2.2	1343	2.4	7.3%
Frederick	1811	3.1	2482	4.3	2059	3.7	-17.0%
Garrett	215	0.4	256	0.4	271	0.5	5.9%
Montgomery	5121	8.8	4374	7.5	4837	8.7	10.6%
Washington	1211	2.1	1304	2.2	1450	2.6	11.2%
<b>Area 3 Total</b>	<b>9453</b>	<b>16.3</b>	<b>9668</b>	<b>16.7</b>	<b>9960</b>	<b>17.9</b>	<b>3.0%</b>
4. Caroline	450	0.8	558	1.0	612	1.1	9.7%
Cecil	1072	1.8	1208	2.1	1145	2.1	-5.2%
Dorchester	508	0.9	568	1.0	542	1.0	-4.6%
Kent	299	0.5	213	0.4	368	0.7	72.8%
Queen Anne's	401	0.7	463	0.8	414	0.7	-10.6%
Somerset	236	0.4	247	0.4	221	0.4	-10.5%
Talbot	576	1.0	539	0.9	611	1.1	13.4%
Wicomico	1297	2.2	1268	2.2	1369	2.5	8.0%
Worcester	1147	2.0	1423	2.5	1624	2.9	14.1%
<b>Area 4 Total</b>	<b>5986</b>	<b>10.3</b>	<b>6487</b>	<b>11.2</b>	<b>6906</b>	<b>12.4</b>	<b>6.5%</b>
5. Calvert	903	1.6	943	1.6	910	1.6	-3.5%
Charles	1353	2.3	1484	2.6	1637	2.9	10.3%
St. Mary's	903	1.6	965	1.7	911	1.6	-5.6%
Prince George's	5476	9.4	5515	9.5	5057	9.1	-8.3%
<b>Area 5 Total</b>	<b>8635</b>	<b>14.9</b>	<b>8907</b>	<b>15.4</b>	<b>8515</b>	<b>15.3</b>	<b>-4.4%</b>
<b>State Total</b>	<b>58021</b>	<b>100.0</b>	<b>58025</b>	<b>100.0</b>	<b>55732</b>	<b>100.0</b>	<b>-4.0%</b>



**Table 2**  
**Manner of Handling Referrals at Intake by Jurisdiction and by Area**  
**FY 1998**

Area	Formal Petition	Percent Formal Cases	90 Days Pre - Court Supervision	Percent 90 Days Per - Court Supervision	Resolved at Intake	Percent Resolved at Intake	No Jurisdiction	Percent No Jurisdiction	Decision not Recorded	Percent Decision not Recorded	Juris. Total	Percent of Cases
1. Baltimore City	6978	61.1	2266	19.8	2022	17.7	105	0.9	57	0.5	11428	100.0
<b>Area 1 Total</b>	<b>6978</b>	<b>61.1</b>	<b>2266</b>	<b>19.8</b>	<b>2022</b>	<b>17.7</b>	<b>105</b>	<b>0.9</b>	<b>57</b>	<b>0.5</b>	<b>11428</b>	<b>100.0</b>
2. Anne Arundel	1773	30.9	2020	35.3	1863	32.5	71	1.2	3	0.1	5730	100.0
Baltimore	3440	43.4	1301	16.4	3041	38.3	151	1.9	1	0.0	7934	100.0
Carroll	373	31.5	342	28.9	457	38.6	10	0.8	1	0.1	1183	100.0
Harford	564	26.9	652	31.1	835	39.8	45	2.1	0	0.0	2096	100.0
Howard	674	34.0	732	37.0	517	26.1	57	2.9	0	0.0	1980	100.0
<b>Area 2 Total</b>	<b>6824</b>	<b>36.1</b>	<b>5047</b>	<b>26.7</b>	<b>6713</b>	<b>35.5</b>	<b>334</b>	<b>1.8</b>	<b>5</b>	<b>0.0</b>	<b>18923</b>	<b>100.0</b>
3. Allegany	229	17.1	346	25.8	758	56.4	9	0.7	1	0.1	1343	100.0
Frederick	678	32.9	501	24.3	846	41.1	34	1.7	0	0.0	2059	100.0
Garrett	79	29.2	100	36.9	73	26.9	18	6.6	1	0.4	271	100.0
Montgomery	1503	31.1	2225	46.0	1097	22.7	11	0.2	1	0.0	4837	100.0
Washington	388	26.8	463	31.9	509	35.1	89	6.1	1	0.1	1450	100.0
<b>Area 3 Total</b>	<b>2877</b>	<b>28.9</b>	<b>3635</b>	<b>36.5</b>	<b>3283</b>	<b>33.0</b>	<b>161</b>	<b>1.6</b>	<b>4</b>	<b>0.0</b>	<b>9960</b>	<b>100.0</b>
4. Caroline	120	19.6	225	36.8	233	38.1	34	5.6	0	0.0	612	100.0
Cecil	373	32.6	239	20.9	520	45.4	13	1.1	0	0.0	1145	100.0
Dorchester	82	15.1	105	19.4	338	62.4	17	3.1	0	0.0	542	100.0
Kent	103	28.0	66	17.9	181	49.2	18	4.9	0	0.0	368	100.0
Queen Anne's	74	17.9	156	37.7	152	36.7	32	7.7	0	0.0	414	100.0
Somerset	78	35.3	56	25.3	69	31.2	18	8.1	0	0.0	221	100.0
Talbot	107	17.5	231	37.8	261	42.7	12	2.0	0	0.0	611	100.0
Wicomico	317	23.2	333	24.3	658	48.1	61	4.5	0	0.0	1369	100.0
Worcester	183	11.3	492	30.3	802	49.4	147	9.1	0	0.0	1624	100.0
<b>Area 4 Total</b>	<b>1437</b>	<b>20.8</b>	<b>1903</b>	<b>27.6</b>	<b>3214</b>	<b>46.5</b>	<b>352</b>	<b>5.1</b>	<b>0</b>	<b>0.0</b>	<b>6906</b>	<b>100.0</b>
5. Calvert	329	36.2	200	22.0	375	41.2	6	0.7	0	0.0	910	100.0
Charles	423	25.8	803	49.1	404	24.7	7	0.4	0	0.0	1637	100.0
St. Mary's	261	28.6	365	40.1	282	31.0	3	0.3	0	0.0	911	100.0
Prince George's	1498	29.6	1695	33.5	1844	36.5	19	0.4	1	0.0	5057	100.0
<b>Area 5 Total</b>	<b>2511</b>	<b>29.5</b>	<b>3063</b>	<b>36.0</b>	<b>2905</b>	<b>34.1</b>	<b>35</b>	<b>0.4</b>	<b>1</b>	<b>0.0</b>	<b>8515</b>	<b>100.0</b>
<b>State Total</b>	<b>20627</b>	<b>37.0</b>	<b>15914</b>	<b>28.6</b>	<b>18137</b>	<b>32.5</b>	<b>987</b>	<b>1.8</b>	<b>67</b>	<b>0.1</b>	<b>55732</b>	<b>100.0</b>

**Table 3**  
**Rank Order of Formal Cases by County of Jurisdiction**  
**FY 1998**

<b>Jurisdictions Area</b>	<b>Formal</b>	<b>% Formal Cases</b>
Baltimore City	6978	61.1
Baltimore Co.	3440	43.4
Calvert	329	36.2
Somerset	78	35.3
Howard	674	34.0
Frederick	678	32.9
cecil	373	32.6
Carroll	373	31.5
Montgomery	1503	31.1
Anne Arundel	1773	30.9
Prince George's	1498	29.6
Garrett	79	29.2
St. Mary's	261	28.6
Kent	103	28.0
Harford	564	26.9
Washington	388	26.8
Charles	423	25.8
Wicomico	317	23.2
caroline	120	19.6
Queen Anne's	74	17.9
Talbot	107	17.5
Allegany	229	17.1
Dorchester	82	15.1
Worcester	183	11.3

**Table 4**  
**Number and Percent of Intake Cases by Race**  
**FY 1998**

<b>Manner of Handling Cases</b>	<b>African-American</b>	<b>% African-American</b>	<b>Caucasian</b>	<b>% Caucasian</b>	<b>Hispanic</b>	<b>% Hispanic</b>	<b>Other</b>	<b>% Other</b>	<b>Total</b>	<b>% Total</b>
Formal	12601	47.6	7471	27.1	312	35.8	243	0.29	20,627	100.0
90 Days Pre-Court Supervision	5936	22.4	9397	34.1	281	32.2	300	0.36	15,914	100.0
Resolved at Intake	7549	28.5	10055	36.5	261	29.9	272	0.33	18,137	100.0
No Jurisdiction	354	1.3	606	2.2	16	1.8	11	0.01	987	100.0
Decision not Recorded	52	0.2	13	0.0	2	0.9	0	0.0	67	100.0
<b>State Total</b>	<b>26,492</b>	<b>100.0</b>	<b>27,542</b>	<b>100.0</b>	<b>872</b>	<b>100.0</b>	<b>826</b>	<b>100.0</b>	<b>55,732</b>	<b>100.0</b>

**Table 5**  
**Intake Cases by Race and by County of Jurisdiction**  
**FY 1998**

Area	African - American	Percent African - American	Caucasian	Percent Caucasian	Hispanic	Percent Hispanic	Juris. Total *
1. Baltimore City	10003	87.5	1379	12.1	16	0.1	11428
<b>Area 1 Total</b>	<b>10003</b>	<b>87.5</b>	<b>1379</b>	<b>12.1</b>	<b>16</b>	<b>0.1</b>	<b>11428</b>
2. Anne Arundel	1549	27.0	4069	71.0	56	1.0	5730
Baltimore	3865	48.7	3978	50.1	22	0.3	7934
Carroll	77	6.5	1095	92.6	8	0.7	1183
Harford	451	21.5	1619	77.2	14	0.7	2096
Howard	662	33.4	1250	63.1	5	0.3	1980
<b>Area 2 Total</b>	<b>6604</b>	<b>34.9</b>	<b>12011</b>	<b>63.5</b>	<b>105</b>	<b>0.6</b>	<b>18923</b>
3. Allegany	110	8.2	1232	91.7	1	0.1	1343
Frederick	474	23.0	1541	74.8	25	1.2	2059
Garrett	24	8.9	246	90.8	0	0.0	271
Montgomery	1931	39.9	2240	46.3	466	9.6	4837
Washington	233	16.1	1157	79.8	22	1.5	1450
<b>Area 3 Total</b>	<b>2772</b>	<b>27.8</b>	<b>6416</b>	<b>64.4</b>	<b>514</b>	<b>5.2</b>	<b>9960</b>
4. Caroline	148	24.2	458	74.8	5	0.8	612
Cecil	117	10.2	1010	88.2	12	1.0	1145
Dorchester	281	51.8	260	48.0	1	0.2	542
Kent	186	50.5	174	47.3	4	1.1	368
Queen Anne's	86	20.8	322	77.8	4	1.0	414
Somerset	131	59.3	90	40.7	0	0.0	221
Talbot	218	35.7	385	63.0	0	0.0	611
Wicomico	672	49.1	664	48.5	12	0.9	1369
Worcester	249	15.3	1328	81.8	18	1.1	1624
<b>Area 4 Total</b>	<b>2088</b>	<b>30.2</b>	<b>4691</b>	<b>67.9</b>	<b>56</b>	<b>0.8</b>	<b>6906</b>
5. Calvert	190	20.9	715	78.6	3	0.3	910
Charles	636	38.9	985	60.2	6	0.4	1637
St. Mary's	255	28.0	641	70.4	0	0.0	911
Prince George's	3944	78.0	704	13.9	172	3.4	5057
<b>Area 5 Total</b>	<b>5025</b>	<b>59.0</b>	<b>3045</b>	<b>35.8</b>	<b>181</b>	<b>2.1</b>	<b>8515</b>
<b>State Total</b>	<b>26492</b>	<b>47.5</b>	<b>27542</b>	<b>49.4</b>	<b>872</b>	<b>1.6</b>	<b>55732</b>

Note: \* Jurisdiction total includes American- Indian, Asian, and Bi-Racial groups.

**Table 6**  
**Manner of Handling Intake Cases by Race and County of Jurisdiction**  
**FY 1998**

Area	African - American					Caucasian				
	Formal	Informal	Resolved at Intake	Decision not Recorded	Total	Formal	Informal	Resolved at Intake	Decision not Recorded	Total
1. Baltimore City	6207	1942	1805	49	10003	740	315	317	7	1379
<b>Area 1 Total</b>	<b>6207</b>	<b>1942</b>	<b>1805</b>	<b>49</b>	<b>10003</b>	<b>740</b>	<b>315</b>	<b>317</b>	<b>7</b>	<b>1379</b>
2. Anne Arundel	651	313	583	2	1549	1088	1681	1300	0	4069
Baltimore	2017	447	1401	0	3865	1393	832	1752	1	3978
Carroll	21	17	39	0	77	348	323	423	1	1095
Harford	179	66	206	0	451	380	576	663	0	1619
Howard	298	159	205	0	662	362	541	347	0	1250
<b>Area 2 Total</b>	<b>3166</b>	<b>1002</b>	<b>2434</b>	<b>2</b>	<b>6604</b>	<b>3571</b>	<b>3953</b>	<b>4485</b>	<b>2</b>	<b>12011</b>
3. Allegany	23	16	71	0	110	205	330	696	1	1232
Frederick	227	75	172	0	474	435	419	687	0	1541
Garrett	11	5	8	0	24	68	95	82	1	246
Montgomery	738	685	507	1	1931	516	1262	462	0	2240
Washington	100	32	101	0	233	260	417	479	1	1157
<b>Area 3 Total</b>	<b>1099</b>	<b>813</b>	<b>859</b>	<b>1</b>	<b>2772</b>	<b>1484</b>	<b>2523</b>	<b>2406</b>	<b>3</b>	<b>6416</b>
4. Caroline	39	43	66	0	148	79	181	198	0	458
Cecil	43	20	54	0	117	319	216	475	0	1010
Dorchester	46	39	196	0	281	36	65	159	0	260
Kent	68	17	101	0	186	33	46	95	0	174
Queen Anne's	18	30	38	0	86	56	125	141	0	322
Somerset	52	28	51	0	131	26	28	36	0	90
Talbot	50	75	93	0	218	56	153	176	0	385
Wicomico	182	134	356	0	672	125	194	345	0	664
Worcester	65	65	119	0	249	110	420	798	0	1328
<b>Area 4 Total</b>	<b>563</b>	<b>451</b>	<b>1074</b>	<b>0</b>	<b>2088</b>	<b>840</b>	<b>1428</b>	<b>2423</b>	<b>0</b>	<b>4691</b>
5. Calvert	81	32	77	0	190	247	167	301	0	715
Charles	206	302	128	0	636	216	487	282	0	985
St. Mary's	71	83	101	0	255	187	276	178	0	641
Prince George's	1208	1311	1425	0	3944	186	248	269	1	704
<b>Area 5 Total</b>	<b>1566</b>	<b>1728</b>	<b>1731</b>	<b>0</b>	<b>5025</b>	<b>836</b>	<b>1178</b>	<b>1030</b>	<b>1</b>	<b>3045</b>
<b>State Total</b>	<b>12601</b>	<b>5936</b>	<b>7903</b>	<b>52</b>	<b>26492</b>	<b>7471</b>	<b>9397</b>	<b>10661</b>	<b>13</b>	<b>27542</b>

**Table 6**  
**Manner of Handling Intake Cases by Race and County of Jurisdiction**  
**FY 1998**

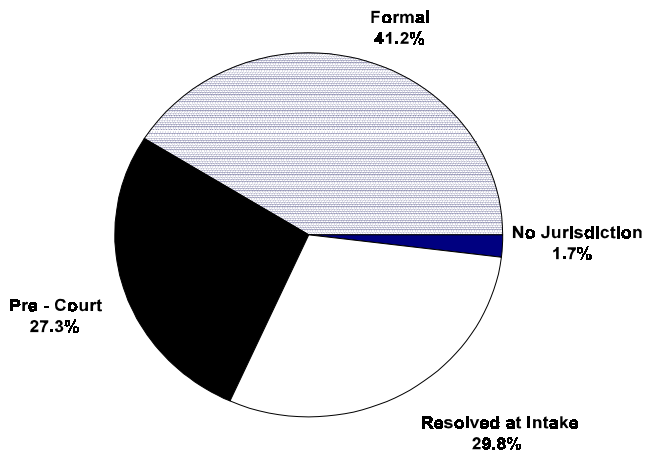
Area	Hispanic					Juris. Total *
	Formal	Informal	Resolved at Intake	Decision Not Recorded	Total	
1. Baltimore City	9	5	1	1	16	11428
<b>Area 1 Total</b>	<b>9</b>	<b>5</b>	<b>1</b>	<b>1</b>	<b>16</b>	<b>11428</b>
2. Anne Arundel	15	10	30	1	56	5730
Baltimore	11	3	8	0	22	7934
Carroll	2	2	4	0	8	1183
Harford	3	5	6	0	14	2096
Howard	1	3	1	0	5	1980
<b>Area 2 Total</b>	<b>32</b>	<b>23</b>	<b>49</b>	<b>1</b>	<b>105</b>	<b>18923</b>
3. Allegany	1	0	0	0	1	1343
Frederick	9	4	12	0	25	2059
Garrett	0	0	0	0	0	271
Montgomery	180	183	103	0	466	4837
Washington	10	5	7	0	22	1450
<b>Area 3 Total</b>	<b>200</b>	<b>192</b>	<b>122</b>	<b>0</b>	<b>514</b>	<b>9960</b>
4. Caroline	1	1	3	0	5	612
Cecil	6	3	3	0	12	1145
Dorchester	0	1	0	0	1	542
Kent	0	2	2	0	4	368
Queen Anne's	0	1	3	0	4	414
Somerset	0	0	0	0	0	221
Talbot	0	0	0	0	0	611
Wicomico	0	2	10	0	12	1369
Worcester	3	0	15	0	18	1624
<b>Area 4 Total</b>	<b>10</b>	<b>10</b>	<b>36</b>	<b>0</b>	<b>56</b>	<b>6906</b>
5. Calvert	0	1	2	0	3	910
Charles	0	6	0	0	6	1637
St. Mary's	0	0	0	0	0	911
Prince George's	61	44	67	0	172	5057
<b>Area 5 Total</b>	<b>61</b>	<b>51</b>	<b>69</b>	<b>0</b>	<b>181</b>	<b>8515</b>
<b>State Total</b>	<b>312</b>	<b>281</b>	<b>277</b>	<b>2</b>	<b>872</b>	<b>55732</b>

Note: \* Jurisdiction total include American-Indian, Asian and Bi-Racial groups.

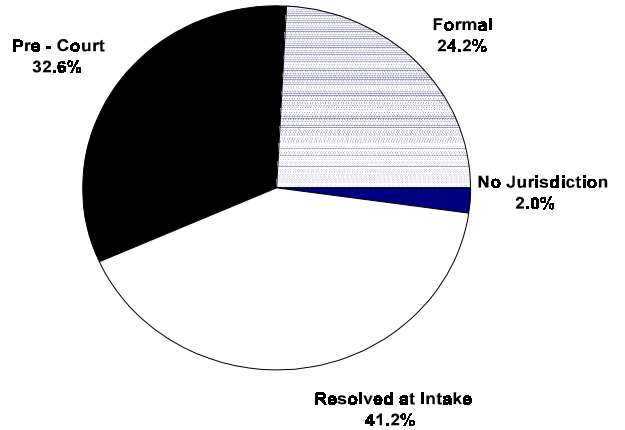
**Table 7**  
**Number and Percent of Total Cases by Gender**  
**FY 1998**

<b>Manner of Handling cases</b>	<b>Males</b>	<b>Percent Males</b>	<b>Females</b>	<b>Percent Females</b>	<b>Total</b>
Formal	17306	41.2	3321	24.2	20627
90 Days Pre-Court Supervision	11447	27.3	4467	32.5	15914
Resolved at intake	12485	29.7	5652	41.2	18137
No Jurisdiction	718	1.7	269	2.0	987
Decision not recorded	48	.1	19	.1	67
<b>Total</b>	<b>42004</b>	<b>100.0</b>	<b>13728</b>	<b>100.0</b>	<b>55732</b>

**Male**



**Female**



**Table 8**  
**Manner of Handling Intake Cases by Gender and County of Jurisdiction**  
**FY 1998**

Area	Male						Female						Juris. Total
	Formal	Informal	Resolved at Intake	Decision not Recorded	Total	Percent Juris. Total	Formal	Informal	Resolved at Intake	Decision not Recorded	Total	Percent Juris. Total	
1. Baltimore City	6050	1660	1635	41	9386	82.1%	928	606	492	16	2042	17.9%	11428
<b>Area 1 Total</b>	<b>6050</b>	<b>1660</b>	<b>1635</b>	<b>41</b>	<b>9386</b>	<b>82.1%</b>	<b>928</b>	<b>606</b>	<b>492</b>	<b>16</b>	<b>2042</b>	<b>17.9%</b>	<b>11428</b>
2. Anne Arundel	1431	1374	1301	3	4109	71.7%	342	646	633	0	1621	28.3%	5730
Baltimore	2750	925	2100	0	5775	72.8%	690	376	1092	1	2159	27.2%	7934
Carroll	304	234	344	0	882	74.6%	69	108	123	1	301	25.4%	1183
Harford	463	471	615	0	1549	73.9%	101	181	265	0	547	26.1%	2096
Howard	560	528	386	0	1474	74.4%	114	204	188	0	506	25.6%	1980
<b>Area 2 Total</b>	<b>5508</b>	<b>3532</b>	<b>4746</b>	<b>3</b>	<b>13789</b>	<b>72.9%</b>	<b>1316</b>	<b>1515</b>	<b>2301</b>	<b>2</b>	<b>5134</b>	<b>27.1%</b>	<b>18923</b>
3. Allegany	183	223	489	1	896	66.7%	46	123	278	0	447	33.3%	1343
Frederick	547	353	637	0	1537	74.6%	131	148	243	0	522	25.4%	2059
Garrett	59	67	65	1	192	70.8%	20	33	26	0	79	29.2%	271
Montgomery	1252	1601	754	1	3608	74.6%	251	624	354	0	1229	25.4%	4837
Washington	311	307	407	1	1026	70.8%	77	156	191	0	424	29.2%	1450
<b>Area 3 Total</b>	<b>2352</b>	<b>2551</b>	<b>2352</b>	<b>4</b>	<b>7259</b>	<b>72.9%</b>	<b>525</b>	<b>1084</b>	<b>1092</b>	<b>0</b>	<b>2701</b>	<b>27.1%</b>	<b>9960</b>
4. Caroline	99	180	178	0	457	74.7%	21	45	89	0	155	25.3%	612
Cecil	314	187	365	0	866	75.6%	59	52	168	0	279	24.4%	1145
Dorchester	76	75	214	0	365	67.3%	6	30	141	0	177	32.7%	542
Kent	78	48	136	0	262	71.2%	25	18	63	0	106	28.8%	368
Queen Anne's	69	118	136	0	323	78.0%	5	38	48	0	91	22.0%	414
Somerset	75	42	58	0	175	79.2%	3	14	29	0	46	20.8%	221
Talbot	91	165	186	0	442	72.3%	16	66	87	0	169	27.7%	611
Wicomico	271	242	483	0	996	72.8%	46	91	236	0	373	27.2%	1369
Worcester	143	359	635	0	1137	70.0%	40	133	314	0	487	30.0%	1624
<b>Area 4 Total</b>	<b>1216</b>	<b>1416</b>	<b>2391</b>	<b>0</b>	<b>5023</b>	<b>72.7%</b>	<b>221</b>	<b>487</b>	<b>1175</b>	<b>0</b>	<b>1883</b>	<b>27.3%</b>	<b>6906</b>
5. Calvert	274	153	233	0	660	72.5%	55	47	148	0	250	27.5%	910
Charles	361	542	305	0	1208	73.8%	62	261	106	0	429	26.2%	1637
St. Mary's	222	239	179	0	640	70.3%	39	126	106	0	271	29.7%	911
Prince George's	1323	1354	1362	0	4039	79.9%	175	341	501	1	1018	20.1%	5057
<b>Area 5 Total</b>	<b>2180</b>	<b>2288</b>	<b>2079</b>	<b>0</b>	<b>6547</b>	<b>76.9%</b>	<b>331</b>	<b>775</b>	<b>861</b>	<b>1</b>	<b>1968</b>	<b>23.1%</b>	<b>8515</b>
<b>State Total</b>	<b>17306</b>	<b>11447</b>	<b>13203</b>	<b>48</b>	<b>42004</b>	<b>75.4%</b>	<b>3321</b>	<b>4467</b>	<b>5921</b>	<b>19</b>	<b>13728</b>	<b>24.6%</b>	<b>55732</b>

**Table 9  
Intake Cases by Race, Gender, and County of Jurisdiction  
FY 1998**

Area	African - American					Caucasian					Hispanic				
	Male	Percent Total	Female	Percent Total	Juris. Total	Male	Percent Total	Female	Percent Total	Juris. Total	Male	Percent Total	Female	Percent Total	Juris. Total *
1. Baltimore City	8248	82.5%	1755	17.5%	10003	1099	79.7%	280	20.3%	1379	15	93.8%	1	6.3%	16
<b>Area 1 Total</b>	<b>8248</b>	<b>82.5%</b>	<b>1755</b>	<b>17.5%</b>	<b>10003</b>	<b>1099</b>	<b>79.7%</b>	<b>280</b>	<b>20.3%</b>	<b>1379</b>	<b>15</b>	<b>93.8%</b>	<b>1</b>	<b>6.3%</b>	<b>16</b>
2. Anne Arundel	1108	71.5%	441	28.5%	1549	2913	71.6%	1156	28.4%	4069	52	92.9%	4	7.1%	56
Baltimore	2809	72.7%	1056	27.3%	3865	2892	72.7%	1086	27.3%	3978	20	90.9%	2	9.1%	22
Carroll	56	72.7%	21	27.3%	77	816	74.5%	279	25.5%	1095	8	100.0%	0	0.0%	8
Harford	355	78.7%	96	21.3%	451	1169	72.2%	450	27.8%	1619	14	100.0%	0	0.0%	14
Howard	531	80.2%	131	19.8%	662	890	71.2%	360	28.8%	1250	3	60.0%	2	40.0%	5
<b>Area 2 Total</b>	<b>4859</b>	<b>73.6%</b>	<b>1745</b>	<b>26.4%</b>	<b>6604</b>	<b>8680</b>	<b>72.3%</b>	<b>3331</b>	<b>27.7%</b>	<b>12011</b>	<b>97</b>	<b>92.4%</b>	<b>8</b>	<b>7.6%</b>	<b>105</b>
3. Allegany	75	68.2%	35	31.8%	110	820	66.6%	412	33.4%	1232	1	100.0%	0	0.0%	1
Frederick	362	76.4%	112	23.6%	474	1137	73.8%	404	26.2%	1541	19	76.0%	6	24.0%	25
Garrett	13	54.2%	11	45.8%	24	178	72.4%	68	27.6%	246	0	0.0%	0	0.0%	0
Montgomery	1454	73.3%	477	24.7%	1931	1624	72.5%	616	27.5%	2240	366	78.5%	100	21.5%	466
Washington	186	79.8%	47	20.2%	233	799	69.1%	358	30.9%	1157	14	63.6%	8	36.4%	22
<b>Area 3 Total</b>	<b>2090</b>	<b>75.4%</b>	<b>682</b>	<b>24.6%</b>	<b>2772</b>	<b>4558</b>	<b>71.0%</b>	<b>1858</b>	<b>29.0%</b>	<b>6416</b>	<b>400</b>	<b>77.8%</b>	<b>114</b>	<b>22.2%</b>	<b>514</b>
4. Caroline	112	75.7%	36	24.3%	148	340	74.2%	118	25.8%	458	4	80.0%	1	20.0%	5
Cecil	91	77.8%	26	22.2%	117	759	75.1%	251	24.9%	1010	10	83.3%	2	16.7%	12
Dorchester	180	64.1%	101	35.9%	281	184	70.8%	76	29.2%	260	1	0.0%	0	0.0%	1
Kent	127	68.3%	59	31.7%	186	128	73.6%	46	26.4%	174	3	0.0%	1	0.0%	4
Queen Anne's	63	73.3%	23	26.7%	86	257	79.8%	65	20.2%	322	3	0.0%	1	0.0%	4
Somerset	103	78.6%	28	21.4%	131	72	80.0%	18	20.0%	90	0	0.0%	0	0.0%	0
Talbot	162	74.3%	56	25.7%	218	278	72.2%	107	27.8%	385	0	0.0%	0	0.0%	0
Wicomico	465	69.2%	207	30.8%	672	506	76.2%	158	23.8%	664	8	66.7%	4	33.3%	12
Worcester	191	76.7%	58	23.3%	249	908	68.4%	420	31.6%	1328	11	61.1%	7	38.9%	18
<b>Area 4 Total</b>	<b>1494</b>	<b>71.6%</b>	<b>594</b>	<b>28.4%</b>	<b>2088</b>	<b>3432</b>	<b>73.2%</b>	<b>1259</b>	<b>26.8%</b>	<b>4691</b>	<b>40</b>	<b>71.4%</b>	<b>16</b>	<b>28.6%</b>	<b>56</b>
5. Calvert	155	81.6%	35	18.4%	190	503	70.3%	212	29.7%	715	1	0.0%	2	0.0%	3
Charles	491	77.2%	145	22.8%	636	708	71.9%	277	28.1%	985	5	83.3%	1	16.7%	6
St. Mary's	184	72.2%	71	27.8%	255	445	69.4%	196	30.6%	641	0	0.0%	0	0.0%	0
Prince George's	3195	81.0%	749	19.0%	3944	519	73.7%	185	26.3%	704	146	84.9%	26	15.1%	172
<b>Area 5 Total</b>	<b>4025</b>	<b>80.1%</b>	<b>1000</b>	<b>19.9%</b>	<b>5025</b>	<b>2175</b>	<b>71.4%</b>	<b>870</b>	<b>28.6%</b>	<b>3045</b>	<b>152</b>	<b>84.0%</b>	<b>29</b>	<b>16.0%</b>	<b>181</b>
<b>State Total</b>	<b>20716</b>	<b>78.2%</b>	<b>5776</b>	<b>21.8%</b>	<b>26492</b>	<b>19944</b>	<b>72.4%</b>	<b>7598</b>	<b>27.6%</b>	<b>27542</b>	<b>704</b>	<b>80.7%</b>	<b>168</b>	<b>19.3%</b>	<b>872</b>

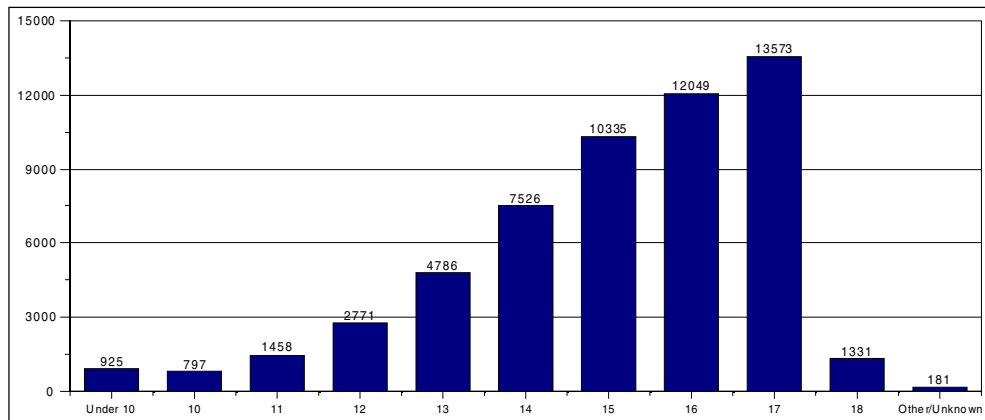
Note: \* Jurisdiction total includes American- Indian, Asian, and Bi-racial groups.



**Table 10  
Number and Percent of Total Intake Cases by Age**

Age of Youth	1996 Cases	Percent Cases	1997 Cases	Percent Cases	1998 Cases	Percent Cases	% Change '97 to '98
Under 10	876	1.5	947	1.6	925	1.7	-2.3
ten	782	1.3	830	1.4	797	1.4	-4.0
eleven	1696	2.9	1709	2.9	1458	2.6	-14.7
twelve	3125	5.4	3070	5.3	2771	5.0	-9.7
thirteen	5623	9.7	5236	9.0	4786	8.6	-8.6
fourteen	8591	14.8	8283	14.3	7526	13.5	-9.1
fifteen	11229	19.4	10932	18.8	10335	18.5	-5.5
sixteen	12012	20.7	12403	21.4	12049	21.6	-2.9
seventeen	12257	21.1	13001	22.4	13573	24.4	4.4
eighteen	1518	2.6	1332	2.3	1331	2.4	-0.1
other/unknown	312	0.5	282	0.5	181	0.3	-35.8
<b>State Total</b>	<b>58021</b>	<b>100.0</b>	<b>58025</b>	<b>100.0</b>	<b>55732</b>	<b>100.0</b>	<b>-4.0</b>

**Total Intake Cases by Age  
FY 1998**



**Table 11**  
**Intake Cases by Age and County of Jurisdiction**  
**FY 1998**

Area	<10	10	11	12	13	14	15	16	17	18	Over 18	age unknown	Juris. Total
1. Baltimore City	199	153	338	570	1084	1612	2317	2395	2421	280	25	34	11428
<b>Area 1 Total</b>	<b>199</b>	<b>153</b>	<b>338</b>	<b>570</b>	<b>1084</b>	<b>1612</b>	<b>2317</b>	<b>2395</b>	<b>2421</b>	<b>280</b>	<b>25</b>	<b>34</b>	<b>11428</b>
2. Anne Arundel	113	131	149	282	495	816	1037	1178	1451	63	2	13	5730
Baltimore	158	122	239	478	792	1131	1466	1629	1755	155	6	3	7934
Carroll	12	12	24	70	81	161	216	266	310	18	2	11	1183
Harford	12	20	40	94	153	257	378	527	556	49	9	1	2096
Howard	27	27	41	93	137	269	328	395	576	75	4	8	1980
<b>Area 2 Total</b>	<b>322</b>	<b>312</b>	<b>493</b>	<b>1017</b>	<b>1658</b>	<b>2634</b>	<b>3425</b>	<b>3995</b>	<b>4648</b>	<b>360</b>	<b>23</b>	<b>36</b>	<b>18923</b>
3. Allegany	41	31	68	86	129	186	231	265	294	10	1	1	1343
Frederick	25	19	39	80	173	313	415	471	485	36	1	2	2059
Garrett	14	6	17	21	34	27	37	51	58	6	0	0	271
Montgomery	61	56	89	186	343	487	869	1109	1358	265	7	7	4837
Washington	28	27	46	90	122	189	267	315	339	23	0	5	1450
<b>Area 3 Total</b>	<b>169</b>	<b>139</b>	<b>259</b>	<b>463</b>	<b>801</b>	<b>1202</b>	<b>1819</b>	<b>2211</b>	<b>2534</b>	<b>340</b>	<b>9</b>	<b>15</b>	<b>9960</b>
5. Caroline	31	4	33	35	57	87	127	109	118	11	0	0	612
Cecil	23	24	39	60	91	159	195	244	289	20	0	1	1145
Dorchester	19	15	19	37	34	74	118	115	107	4	0	0	542
Kent	6	5	5	15	37	57	74	91	77	1	0	0	368
Queen Anne's	4	2	8	14	35	40	80	107	115	8	0	1	414
Somerset	5	5	6	16	30	36	38	39	43	3	0	0	221
Talbot	11	3	14	42	50	75	110	146	153	7	0	0	611
Wicomico	22	22	36	85	138	221	272	266	275	31	1	0	1369
Worcester	6	6	15	27	81	173	236	388	671	20	0	0	1624
<b>Area 4 Total</b>	<b>127</b>	<b>86</b>	<b>175</b>	<b>331</b>	<b>553</b>	<b>922</b>	<b>1250</b>	<b>1505</b>	<b>1848</b>	<b>105</b>	<b>1</b>	<b>2</b>	<b>6906</b>
5. Calvert	8	15	28	40	58	116	163	205	241	34	0	2	910
Charles	38	22	50	102	142	164	262	371	450	33	3	0	1637
St. Mary's	14	13	31	44	70	121	143	201	255	18	1	0	911
Prince George's	48	57	84	204	420	755	956	1166	1176	161	14	16	5057
<b>Area 5 Total</b>	<b>108</b>	<b>107</b>	<b>193</b>	<b>390</b>	<b>690</b>	<b>1156</b>	<b>1524</b>	<b>1943</b>	<b>2122</b>	<b>246</b>	<b>18</b>	<b>18</b>	<b>8515</b>
<b>State Total</b>	<b>925</b>	<b>797</b>	<b>1458</b>	<b>2771</b>	<b>4786</b>	<b>7526</b>	<b>10335</b>	<b>12049</b>	<b>13573</b>	<b>1331</b>	<b>76</b>	<b>105</b>	<b>55732</b>

**Table 12**  
**Intake Cases by Age and County of Jurisdiction for African-American Youth**  
**FY 1998**

Area	<10	10	11	12	13	14	15	16	17	18	Over 18	age unknown	Juris Total
1. Baltimore City	176	122	276	506	935	1427	2049	2102	2113	245	20	32	10003
<b>Area 1 Total</b>	<b>176</b>	<b>122</b>	<b>276</b>	<b>506</b>	<b>935</b>	<b>1427</b>	<b>2049</b>	<b>2102</b>	<b>2113</b>	<b>245</b>	<b>20</b>	<b>32</b>	<b>10003</b>
2. Anne Arundel	51	61	76	99	166	232	250	295	306	9	0	4	1549
Baltimore	67	68	141	250	415	594	749	750	747	79	3	2	3865
Carroll	2	2	1	9	5	12	10	18	16	2	0	0	77
Harford	5	6	14	23	48	60	72	104	106	11	2	0	451
Howard	12	20	16	59	61	104	110	107	147	20	2	4	662
<b>Area 2 Total</b>	<b>137</b>	<b>157</b>	<b>248</b>	<b>440</b>	<b>695</b>	<b>1002</b>	<b>1191</b>	<b>1274</b>	<b>1322</b>	<b>121</b>	<b>7</b>	<b>10</b>	<b>6604</b>
3. Allegany	13	3	13	11	10	7	14	14	24	1	0	0	110
Frederick	7	5	10	35	44	80	82	107	96	7	0	1	474
Garrett	2	1	6	7	4	3	0	0	1	0	0	0	24
Montgomery	42	40	58	93	172	233	349	415	441	81	3	4	1931
Washington	3	11	7	8	12	28	44	49	67	3	0	1	233
<b>Area 3 Total</b>	<b>67</b>	<b>60</b>	<b>94</b>	<b>154</b>	<b>242</b>	<b>351</b>	<b>489</b>	<b>585</b>	<b>629</b>	<b>92</b>	<b>3</b>	<b>6</b>	<b>2772</b>
5. Caroline	16	1	8	13	16	19	31	14	28	2	0	0	148
Cecil	1	1	0	6	9	16	22	30	31	1	0	0	117
Dorchester	17	10	15	30	8	42	64	49	45	1	0	0	281
Kent	6	3	4	8	28	29	50	32	26	0	0	0	186
Queen Anne's	1	0	4	4	5	9	17	26	19	1	0	0	86
Somerset	1	3	5	7	19	25	24	22	23	2	0	0	131
Talbot	11	2	10	24	30	31	27	32	49	2	0	0	218
Wicomico	14	18	21	52	80	123	126	129	99	10	0	0	672
Worcester	2	2	12	15	30	36	42	40	67	3	0	0	249
<b>Area 4 Total</b>	<b>69</b>	<b>40</b>	<b>79</b>	<b>159</b>	<b>225</b>	<b>330</b>	<b>403</b>	<b>374</b>	<b>387</b>	<b>22</b>	<b>0</b>	<b>0</b>	<b>2088</b>
5. Calvert	3	6	12	6	19	30	20	43	46	4	0	1	190
Charles	24	12	22	54	64	75	107	127	134	14	3	0	636
St. Mary's	6	8	10	19	20	48	40	41	61	2	0	0	255
Prince George's	38	46	76	163	349	594	721	879	924	130	10	14	3944
<b>Area 5 Total</b>	<b>71</b>	<b>72</b>	<b>120</b>	<b>242</b>	<b>452</b>	<b>747</b>	<b>888</b>	<b>1090</b>	<b>1165</b>	<b>150</b>	<b>13</b>	<b>15</b>	<b>5025</b>
<b>State Total</b>	<b>520</b>	<b>451</b>	<b>817</b>	<b>1501</b>	<b>2549</b>	<b>3857</b>	<b>5020</b>	<b>5425</b>	<b>5616</b>	<b>630</b>	<b>43</b>	<b>63</b>	<b>26492</b>

**Table 13**  
**Intake Cases by Age and County of Jurisdiction for Caucasian Youth**  
**FY 1998**

Area	<10	10	11	12	13	14	15	16	17	18	over 18	age unknown	Juris. Total
1. Baltimore City	23	31	62	63	144	181	262	278	295	35	3	2	1379
<b>Area 1 Total</b>	<b>23</b>	<b>31</b>	<b>62</b>	<b>63</b>	<b>144</b>	<b>181</b>	<b>262</b>	<b>278</b>	<b>295</b>	<b>35</b>	<b>3</b>	<b>2</b>	<b>1379</b>
2. Anne Arundel	60	68	72	175	322	572	766	858	1114	52	2	8	4069
Baltimore	88	51	98	224	374	526	707	848	982	76	3	1	3978
Carroll	10	10	23	60	76	148	205	245	290	16	1	11	1095
Harford	6	14	25	68	104	196	298	418	444	38	7	1	1619
Howard	15	7	25	34	73	149	212	275	401	54	2	3	1250
<b>Area 2 Total</b>	<b>179</b>	<b>150</b>	<b>243</b>	<b>561</b>	<b>949</b>	<b>1591</b>	<b>2188</b>	<b>2644</b>	<b>3231</b>	<b>236</b>	<b>15</b>	<b>24</b>	<b>12011</b>
3. Allegany	28	28	55	75	119	179	217	250	270	9	1	1	1232
Frederick	18	13	28	41	128	219	323	359	381	29	1	1	1541
Garrett	12	5	11	14	30	24	37	51	56	6	0	0	246
Montgomery	17	13	25	79	137	199	398	512	710	144	3	3	2240
Washington	22	14	39	79	104	154	211	256	257	18	0	3	1157
<b>Area 3 Total</b>	<b>97</b>	<b>73</b>	<b>158</b>	<b>288</b>	<b>518</b>	<b>775</b>	<b>1186</b>	<b>1428</b>	<b>1674</b>	<b>206</b>	<b>5</b>	<b>8</b>	<b>6416</b>
5. Caroline	14	3	25	21	41	68	94	94	89	9	0	0	458
Cecil	22	23	39	54	82	142	169	203	257	18	0	1	1010
Dorchester	2	5	4	7	26	32	53	66	62	3	0	0	260
Kent	0	2	1	7	8	27	23	57	48	1	0	0	174
Queen Anne's	3	2	4	10	29	30	63	79	94	7	0	1	322
Somerset	4	2	1	9	11	11	14	17	20	1	0	0	90
Talbot	0	1	4	18	20	41	82	113	101	5	0	0	385
Wicomico	8	4	14	31	55	94	135	132	170	20	1	0	664
Worcester	4	4	3	12	50	136	185	332	584	17	0	1	1328
<b>Area 4 Total</b>	<b>57</b>	<b>46</b>	<b>95</b>	<b>169</b>	<b>322</b>	<b>581</b>	<b>818</b>	<b>1093</b>	<b>1425</b>	<b>81</b>	<b>1</b>	<b>3</b>	<b>4691</b>
5. Calvert	5	9	16	34	39	85	141	161	194	30	0	1	715
Charles	14	10	28	48	77	86	152	239	312	19	0	0	985
St. Mary's	8	5	19	25	49	72	102	156	190	15	0	0	641
Prince George's	6	6	4	18	45	110	152	174	164	20	4	1	704
<b>Area 5 Total</b>	<b>33</b>	<b>30</b>	<b>67</b>	<b>125</b>	<b>210</b>	<b>353</b>	<b>547</b>	<b>730</b>	<b>860</b>	<b>84</b>	<b>4</b>	<b>2</b>	<b>3045</b>
<b>State Total</b>	<b>389</b>	<b>330</b>	<b>625</b>	<b>1206</b>	<b>2143</b>	<b>3481</b>	<b>5001</b>	<b>6173</b>	<b>7485</b>	<b>642</b>	<b>28</b>	<b>39</b>	<b>27542</b>

**Table 14**  
**Intake Cases by Age and County of Jurisdiction for Hispanic Youth**  
**FY 1998**

Area	< 9	10	11	12	13	14	15	16	17	18	over 18	age unknown	Juris. Total
1. Baltimore City	0	0	0	0	2	2	4	5	3	0	0	0	16
<b>Area 1 Total</b>	<b>0</b>	<b>0</b>	<b>0</b>	<b>0</b>	<b>2</b>	<b>2</b>	<b>4</b>	<b>5</b>	<b>3</b>	<b>0</b>	<b>0</b>	<b>0</b>	<b>16</b>
2. Anne Arundel	0	1	1	4	5	7	12	16	8	1	0	1	56
Baltimore	0	0	0	0	1	2	3	12	4	0	0	0	22
Carroll	0	0	0	1	0	1	0	2	3	0	1	0	8
Harford	1	0	1	3	1	0	3	2	3	0	0	0	14
Howard	0	0	0	0	0	0	1	1	3	0	0	0	5
<b>Area 2 Total</b>	<b>1</b>	<b>1</b>	<b>2</b>	<b>8</b>	<b>7</b>	<b>10</b>	<b>19</b>	<b>33</b>	<b>21</b>	<b>1</b>	<b>1</b>	<b>1</b>	<b>105</b>
3. Allegany	0	0	0	0	0	0	0	1	0	0	0	0	1
Frederick	0	1	1	3	0	6	8	3	3	0	0	0	25
Garrett	0	0	0	0	0	0	0	0	0	0	0	0	0
Montgomery	2	1	5	11	23	39	91	131	137	26	0	0	466
Washington	3	2	0	0	3	4	3	2	4	1	0	0	22
<b>Area 3 Total</b>	<b>5</b>	<b>4</b>	<b>6</b>	<b>14</b>	<b>26</b>	<b>49</b>	<b>102</b>	<b>137</b>	<b>144</b>	<b>27</b>	<b>0</b>	<b>0</b>	<b>514</b>
5. Caroline	1	0	0	1	0	0	2	0	1	0	0	0	5
Cecil	0	0	0	0	0	1	3	6	1	1	0	0	12
Dorchester	0	0	0	0	0	0	1	0	0	0	0	0	1
Kent	0	0	0	0	1	1	0	2	0	0	0	0	4
Queen Anne's	0	0	0	0	1	0	0	2	1	0	0	0	4
Somerset	0	0	0	0	0	0	0	0	0	0	0	0	0
Talbot	0	0	0	0	0	0	0	0	0	0	0	0	0
Wicomico	0	0	1	0	1	3	2	3	1	1	0	0	12
Worcester	0	0	0	0	0	1	1	4	12	0	0	0	18
<b>Area 4 Total</b>	<b>1</b>	<b>0</b>	<b>1</b>	<b>1</b>	<b>3</b>	<b>6</b>	<b>9</b>	<b>17</b>	<b>16</b>	<b>2</b>	<b>0</b>	<b>0</b>	<b>56</b>
5. Calvert	0	0	0	0	0	1	1	0	1	0	0	0	3
Charles	0	0	0	0	0	0	1	2	0	0	0	0	3
St. Mary's	0	0	0	0	0	0	0	0	3	0	0	0	3
Prince George's	0	1	1	6	7	14	36	56	43	7	0	1	172
<b>Area 5 Total</b>	<b>0</b>	<b>1</b>	<b>1</b>	<b>6</b>	<b>7</b>	<b>15</b>	<b>38</b>	<b>58</b>	<b>47</b>	<b>7</b>	<b>0</b>	<b>1</b>	<b>181</b>
<b>State Total</b>	<b>7</b>	<b>6</b>	<b>10</b>	<b>29</b>	<b>45</b>	<b>82</b>	<b>172</b>	<b>250</b>	<b>231</b>	<b>37</b>	<b>1</b>	<b>2</b>	<b>872</b>

**Table 15**  
**Intake Cases by Age and County of Jurisdiction for Males**  
**FY 1998**

Area	< 9	10	11	12	13	14	15	16	17	18	Over 18	age Unknown	Juris. Total
1. Baltimore City	183	137	288	438	828	1221	1853	2054	2107	245	19	13	9386
<b>Area 1 Total</b>	<b>183</b>	<b>137</b>	<b>288</b>	<b>438</b>	<b>828</b>	<b>1221</b>	<b>1853</b>	<b>2054</b>	<b>2107</b>	<b>245</b>	<b>19</b>	<b>13</b>	<b>9386</b>
2. Anne Arundel	91	106	117	202	356	554	700	837	1095	43	1	7	4109
Baltimore	133	96	189	328	554	777	1053	1189	1319	131	4	2	5775
Carroll	11	10	16	50	56	108	161	196	250	15	2	7	882
Harford	9	15	34	68	105	178	263	401	430	37	8	1	1549
Howard	23	24	33	66	101	192	224	314	434	54	4	5	1474
<b>Area 2 Total</b>	<b>267</b>	<b>251</b>	<b>389</b>	<b>714</b>	<b>1172</b>	<b>1809</b>	<b>2401</b>	<b>2937</b>	<b>3528</b>	<b>280</b>	<b>19</b>	<b>22</b>	<b>13789</b>
3. Allegany	35	20	43	70	82	113	144	178	202	8	1	0	896
Frederick	22	15	28	51	125	215	295	379	380	25	0	2	1537
Garrett	11	4	10	11	20	19	27	36	48	6	0	0	192
Montgomery	51	49	66	147	260	370	614	797	1055	192	6	1	3608
Washington	19	26	38	65	74	120	189	221	254	16	0	4	1026
<b>Area 3 Total</b>	<b>138</b>	<b>114</b>	<b>185</b>	<b>344</b>	<b>561</b>	<b>837</b>	<b>1269</b>	<b>1611</b>	<b>1939</b>	<b>247</b>	<b>7</b>	<b>7</b>	<b>7259</b>
5. Caroline	27	2	33	28	33	62	91	81	92	8	0	0	457
Cecil	21	19	31	46	72	114	138	198	213	13	0	1	866
Dorchester	17	13	13	20	26	53	76	75	71	1	0	0	365
Kent	6	2	2	12	24	37	51	70	57	1	0	0	262
Queen Anne's	4	2	6	9	30	33	58	82	91	8	0	0	323
Somerset	5	4	3	12	21	28	29	34	36	3	0	0	175
Talbot	11	1	10	33	33	53	84	102	111	4	0	0	442
Wicomico	22	20	32	68	99	149	177	188	216	24	1	0	996
Worcester	3	6	10	21	50	100	174	280	479	13	0	1	1137
<b>Area 4 Total</b>	<b>116</b>	<b>69</b>	<b>140</b>	<b>249</b>	<b>388</b>	<b>629</b>	<b>878</b>	<b>1110</b>	<b>1366</b>	<b>75</b>	<b>1</b>	<b>2</b>	<b>5023</b>
5. Calvert	5	11	26	34	42	82	104	137	192	26	0	1	660
Charles	33	20	46	78	94	103	179	276	349	27	3	0	1208
St. Mary's	14	9	25	34	53	66	93	139	189	17	1	0	640
Prince George's	42	43	74	157	326	573	744	936	985	139	10	10	4039
<b>Area 5 Total</b>	<b>94</b>	<b>83</b>	<b>171</b>	<b>303</b>	<b>515</b>	<b>824</b>	<b>1120</b>	<b>1488</b>	<b>1715</b>	<b>209</b>	<b>14</b>	<b>11</b>	<b>6547</b>
<b>State Total</b>	<b>798</b>	<b>654</b>	<b>1173</b>	<b>2048</b>	<b>3464</b>	<b>5320</b>	<b>7521</b>	<b>9200</b>	<b>10655</b>	<b>1056</b>	<b>60</b>	<b>55</b>	<b>42004</b>

**Table 16**  
**Intake Cases by Age and County of Jurisdiction for Females**  
**FY 1998**

<b>Area</b>	<b>&lt; 10</b>	<b>10</b>	<b>11</b>	<b>12</b>	<b>13</b>	<b>14</b>	<b>15</b>	<b>16</b>	<b>17</b>	<b>18</b>	<b>Over 18</b>	<b>Age Unknown</b>	<b>Juris. Total</b>
1. Baltimore City	16	16	50	132	256	391	464	341	314	35	6	21	2042
<b>Area 1 Total</b>	<b>16</b>	<b>16</b>	<b>50</b>	<b>132</b>	<b>256</b>	<b>391</b>	<b>464</b>	<b>341</b>	<b>314</b>	<b>35</b>	<b>6</b>	<b>21</b>	<b>2042</b>
2. Anne Arundel	22	25	32	80	139	262	337	341	356	20	1	6	1621
Baltimore	25	26	50	150	238	354	413	440	436	24	2	1	2159
Carroll	1	2	8	20	25	53	55	70	60	3	0	4	301
Harford	3	5	6	26	48	79	115	126	126	12	1	0	547
Howard	4	3	8	27	36	77	104	81	142	21	0	3	506
<b>Area 2 Total</b>	<b>55</b>	<b>61</b>	<b>104</b>	<b>303</b>	<b>486</b>	<b>825</b>	<b>1024</b>	<b>1058</b>	<b>1120</b>	<b>80</b>	<b>4</b>	<b>14</b>	<b>5134</b>
3. Allegany	6	11	25	16	47	73	87	87	92	2	0	1	447
Frederick	3	4	11	29	48	98	120	92	105	11	1	0	522
Garrett	3	2	7	10	14	8	10	15	10	0	0	0	79
Montgomery	10	7	23	39	83	117	255	312	303	73	1	6	1229
Washington	9	1	8	25	48	69	78	94	85	7	0	0	424
<b>Area 3 Total</b>	<b>31</b>	<b>25</b>	<b>74</b>	<b>119</b>	<b>240</b>	<b>365</b>	<b>550</b>	<b>600</b>	<b>595</b>	<b>93</b>	<b>2</b>	<b>7</b>	<b>2701</b>
5. Caroline	4	2	0	7	24	25	36	28	26	3	0	0	155
Cecil	2	5	8	14	19	45	57	46	76	7	0	0	279
Dorchester	2	2	6	17	8	21	42	40	36	3	0	0	177
Kent	0	3	3	3	13	20	23	21	20	0	0	0	106
Queen Anne's	0	0	2	5	5	7	22	25	24	0	0	1	91
Somerset	0	1	3	4	9	8	9	5	7	0	0	0	46
Talbot	0	2	4	9	17	22	26	44	42	3	0	0	169
Wicomico	0	2	4	17	39	72	95	78	59	7	0	0	373
Worcester	3	0	5	6	31	73	62	108	192	7	0	0	487
<b>Area 4 Total</b>	<b>11</b>	<b>17</b>	<b>35</b>	<b>82</b>	<b>165</b>	<b>293</b>	<b>372</b>	<b>395</b>	<b>482</b>	<b>30</b>	<b>0</b>	<b>1</b>	<b>1883</b>
5. Calvert	3	4	2	6	16	34	59	68	49	8	0	1	250
Charles	5	2	4	24	48	61	83	95	101	6	0	0	429
St. Mary's	0	4	6	10	17	55	50	62	66	1	0	0	271
Prince George's	6	14	10	47	94	182	212	230	191	22	4	6	1018
<b>Area 5 Total</b>	<b>14</b>	<b>24</b>	<b>22</b>	<b>87</b>	<b>175</b>	<b>332</b>	<b>404</b>	<b>455</b>	<b>407</b>	<b>37</b>	<b>4</b>	<b>7</b>	<b>1968</b>
<b>State Total</b>	<b>127</b>	<b>143</b>	<b>285</b>	<b>723</b>	<b>1322</b>	<b>2206</b>	<b>2814</b>	<b>2849</b>	<b>2918</b>	<b>275</b>	<b>16</b>	<b>50</b>	<b>13728</b>

**Table 17**  
**Number & Percent of Total Intake Cases by Referral Source**  
**FY 1998**

Referral Source	FY 1997	Percent
Police	52445	94.1
Maryland State Agencies	840	1.5
Citizen	1253	2.2
Parent/Relative	452	0.8
Court	139	0.2
Other	603	1.1
<b>State Total</b>	<b>55732</b>	<b>100.0</b>

**Table 18**  
**Intake Cases by Referral Source & County of Jurisdiction**  
**FY 1998**

Area	Police	Maryland State Agencies	Citizen	Parent / Relative	Court	Other	Juris. Total
1. Baltimore City	10379	357	471	40	23	158	11428
<b>Area 1 Total</b>	<b>10379</b>	<b>357</b>	<b>471</b>	<b>40</b>	<b>23</b>	<b>158</b>	<b>11428</b>
2. Anne Arundel	5645	60	0	3	4	18	5730
Baltimore	7857	6	0	3	1	67	7934
Carroll	1008	31	91	44	1	8	1183
Harford	2064	2	0	0	2	28	2096
Howard	1934	7	26	1	3	9	1980
<b>Area 2 Total</b>	<b>18508</b>	<b>106</b>	<b>117</b>	<b>51</b>	<b>11</b>	<b>130</b>	<b>18923</b>
3. Allegany	1254	0	54	26	3	6	1343
Frederick	1938	20	41	41	1	18	2059
Garrett	211	28	6	20	5	1	271
Montgomery	4690	0	0	40	57	50	4837
Washington	987	0	301	155	3	4	1450
<b>Area 3 Total</b>	<b>9080</b>	<b>48</b>	<b>402</b>	<b>282</b>	<b>69</b>	<b>79</b>	<b>9960</b>
4. Caroline	574	18	8	5	0	7	612
Cecil	1096	0	23	2	0	24	1145
Dorchester	524	0	18	0	0	0	542
Kent	360	5	0	2	0	1	368
Queen Anne's	394	15	1	2	0	2	414
Somerset	214	0	0	1	0	6	221
Talbot	602	1	0	0	7	1	611
Wicomico	1356	0	0	0	0	13	1369
Worcester	1608	7	0	1	0	8	1624
<b>Area 4 Total</b>	<b>6728</b>	<b>46</b>	<b>50</b>	<b>13</b>	<b>7</b>	<b>62</b>	<b>6906</b>
5. Calvert	898	0	7	1	0	4	910
Charles	1592	0	0	21	2	22	1637
St. Mary's	888	0	0	18	0	5	911
Prince George's	4372	283	206	26	27	143	5057
<b>Area 5 Total</b>	<b>7750</b>	<b>283</b>	<b>213</b>	<b>66</b>	<b>29</b>	<b>174</b>	<b>8515</b>
<b>State Total</b>	<b>52445</b>	<b>840</b>	<b>1253</b>	<b>452</b>	<b>139</b>	<b>603</b>	<b>55732</b>



**Table 19**  
**Intake Cases - Offense by Offense Type**  
**FY 1996 - FY 1998**

Offenses	FY 1996	Percent	FY 1997	Percent	FY 1998	Percent	Percent Change '97 to '98
<b>Person - to Person Offenses</b>							
aggravated assault	895	1.5	640	1.1	468	0.8	-26.9
simple assault	11435	19.7	10969	18.9	10899	19.6	-0.6
robbery	692	1.2	794	1.4	702	1.3	-11.6
sex offense	658	1.1	595	1.0	617	1.1	3.7
murder	68	0.1	81	0.1	53	0.1	-34.6
manslaughter	3	0.0	5	0.0	2	0.0	-60.0
kidnapping	6	0.0	9	0.0	8	0.0	-11.1
child abuse	60	0.1	76	0.1	88	0.2	15.8
<b>Total Person-to-Person</b>	<b>13817</b>	<b>23.8</b>	<b>13169</b>	<b>22.7</b>	<b>12837</b>	<b>23.0</b>	<b>-2.5</b>
<b>Property Offenses</b>							
arson felony/misd	439	0.8	372	0.6	350	0.6	-5.9
auto theft/unauthorized use	4053	7.0	3325	5.7	2636	4.7	-20.7
burglary/breaking & entering	2724	4.7	2994	5.2	2703	4.8	-9.7
carjacking	44	0.1	40	0.1	22	0.0	0.0
malicious destruction	3461	6.0	3728	6.4	3464	6.2	-7.1
theft/shoplifting	9461	16.3	10023	17.3	9089	16.3	-9.3
tampering	131	0.2	94	0.2	83	0.1	-11.7
trespassing	1487	2.6	1422	2.5	1350	2.4	-5.1
<b>Total Property</b>	<b>21800</b>	<b>37.6</b>	<b>21998</b>	<b>37.9</b>	<b>19697</b>	<b>35.3</b>	<b>-10.5</b>
<b>Alcohol &amp; Drug Related Offenses</b>							
alcohol violations	2591	4.5	3112	5.4	3932	7.1	26.3
narcotics possession	4739	8.2	5003	8.6	4902	8.8	-2.0
narcotics distribution	3982	6.9	3559	6.1	2689	4.8	-24.4
glue sniffing & other inhalants	40	0.1	54	0.1	30	0.1	-44.4
<b>Total - Alcohol &amp; Drug related</b>	<b>11352</b>	<b>19.6</b>	<b>11728</b>	<b>20.2</b>	<b>11553</b>	<b>20.7</b>	<b>-1.5</b>
<b>CINS Offenses</b>							
runaway	868	1.5	745	1.3	893	1.6	19.9
truancy	310	0.5	246	0.4	346	0.6	40.7
ungovernable	1191	2.1	907	1.6	799	1.4	-11.9
<b>Total - CINS</b>	<b>2369</b>	<b>4.1</b>	<b>1898</b>	<b>3.3</b>	<b>2038</b>	<b>3.7</b>	<b>7.4</b>
<b>Uncategorized - Offenses</b>							
carry or conceal a deadly weapon	1143	2.0	1074	1.9	1169	2.1	8.8
disorderly conduct	2164	3.7	1876	3.2	1741	3.1	-7.2
conspiracy	111	0.2	114	0.2	140	0.3	22.8
motor vehicle /traffic violations	1024	1.8	1021	1.8	1011	1.8	-1.0
unspecified felony	160	0.3	201	0.3	182	0.3	-9.5
pager at school	656	1.1	564	1.0	95	0.2	-83.2
tobacco violations	755	1.3	1361	2.3	2626	4.7	92.9
hand gun violations	335	0.6	290	0.5	266	0.5	-8.3
harrassment	269	0.5	258	0.4	223	0.4	-13.6
loitering	399	0.7	607	1.0	361	0.6	-40.5
failure to obey law	312	0.5	307	0.5	193	0.3	-37.1
false report	148	0.3	188	0.3	247	0.4	31.4
reckless endangerment	106	0.2	145	0.2	108	0.2	-25.5
rogue & vagabond	96	0.2	102	0.2	75	0.1	-26.5
telephone misuse	179	0.3	177	0.3	194	0.3	9.6
other/misdemeanors	826	1.4	947	1.6	976	1.8	3.1
<b>Total - Uncategorized</b>	<b>8683</b>	<b>15.0</b>	<b>9232</b>	<b>15.9</b>	<b>9607</b>	<b>17.2</b>	<b>4.1</b>
<b>State Total</b>	<b>58021</b>	<b>100.0</b>	<b>58025</b>	<b>100.0</b>	<b>55732</b>	<b>100.0</b>	<b>-4.0</b>

**Table 20**  
**Intake Cases by Alleged Offenses & County of Jurisdiction**  
**FY 1998**

Area	Aggravated Assault	Simple Assault	Robbery	Sex Offense	Murder	Manslaughter	Kidnapping	Child Abuse	Arson Felony/ Misdemeanors	Unauthorized Use	Breaking & Entering	Carjacking	Malicious Destruction	Theft/ Shoplifting	Tampering	Trespassing
1. Baltimore City	369	2378	124	146	34	0	0	9	49	931	416	6	516	661	4	367
<b>Area 1 Total</b>	<b>369</b>	<b>2378</b>	<b>124</b>	<b>146</b>	<b>34</b>	<b>0</b>	<b>0</b>	<b>9</b>	<b>49</b>	<b>931</b>	<b>416</b>	<b>6</b>	<b>516</b>	<b>661</b>	<b>4</b>	<b>367</b>
2. Anne Arundel	5	1118	48	62	1	0	0	3	26	102	271	0	448	1046	14	156
Baltimore	60	1771	213	81	1	1	2	27	57	425	432	5	552	2045	8	218
Carroll	0	258	4	8	0	0	0	0	10	28	43	0	89	180	5	18
Harford	2	301	8	13	0	0	0	0	14	51	68	1	95	286	8	39
Howard	0	403	33	15	0	0	0	0	21	89	78	1	136	340	1	49
<b>Area 2 Total</b>	<b>67</b>	<b>3851</b>	<b>306</b>	<b>179</b>	<b>2</b>	<b>1</b>	<b>2</b>	<b>30</b>	<b>128</b>	<b>695</b>	<b>892</b>	<b>7</b>	<b>1320</b>	<b>3897</b>	<b>36</b>	<b>480</b>
3. Allegany	1	297	0	11	0	0	0	1	0	29	32	0	75	186	6	24
Frederick	1	354	9	18	0	0	1	0	12	45	109	0	150	366	8	29
Garrett	1	42	1	5	0	0	0	0	2	13	17	0	30	25	0	5
Montgomery	2	823	65	65	2	1	3	14	68	197	283	1	254	911	0	81
Washington	4	250	4	24	0	0	1	0	20	38	68	0	76	256	1	11
<b>Area 3 Total</b>	<b>9</b>	<b>1766</b>	<b>79</b>	<b>123</b>	<b>2</b>	<b>1</b>	<b>5</b>	<b>15</b>	<b>102</b>	<b>322</b>	<b>509</b>	<b>1</b>	<b>585</b>	<b>1744</b>	<b>15</b>	<b>150</b>
4. Caroline	0	135	1	8	0	0	0	0	2	11	60	0	73	85	1	2
Cecil	0	263	5	9	1	0	0	0	10	22	42	0	127	195	1	18
Dorchester	2	149	2	5	1	0	0	0	3	8	29	0	29	97	2	6
Kent	0	81	0	0	0	0	0	0	0	11	24	0	34	56	3	5
Queen Anne's	1	72	2	4	0	0	0	0	2	9	20	0	28	38	0	6
Somerset	0	66	1	1	0	0	0	0	2	9	14	0	16	36	0	1
Talbot	0	117	0	8	0	0	0	0	2	23	25	0	44	108	0	4
Wicomico	1	431	5	18	2	0	0	1	12	47	59	1	97	263	4	14
Worcester	4	136	2	9	0	0	0	2	4	24	27	0	79	215	1	9
<b>Area 4 Total</b>	<b>8</b>	<b>1450</b>	<b>18</b>	<b>62</b>	<b>4</b>	<b>0</b>	<b>0</b>	<b>3</b>	<b>37</b>	<b>164</b>	<b>300</b>	<b>1</b>	<b>527</b>	<b>1093</b>	<b>12</b>	<b>65</b>
5. Calvert	0	138	1	11	0	0	0	1	7	22	50	0	81	122	0	18
Charles	0	354	14	22	1	0	0	6	13	57	91	1	134	412	2	26
St. Mary's	1	175	3	5	2	0	0	1	9	14	65	0	69	135	0	12
Prince George's	14	787	157	69	8	0	1	23	5	431	380	6	232	1025	14	232
<b>Area 5 Total</b>	<b>15</b>	<b>1454</b>	<b>175</b>	<b>107</b>	<b>11</b>	<b>0</b>	<b>1</b>	<b>31</b>	<b>34</b>	<b>524</b>	<b>586</b>	<b>7</b>	<b>516</b>	<b>1694</b>	<b>16</b>	<b>288</b>
<b>State Total</b>	<b>468</b>	<b>10899</b>	<b>702</b>	<b>617</b>	<b>53</b>	<b>2</b>	<b>8</b>	<b>88</b>	<b>350</b>	<b>2636</b>	<b>2703</b>	<b>22</b>	<b>3464</b>	<b>9089</b>	<b>83</b>	<b>1350</b>

**Table 20**  
**Intake Cases by Alleged Offenses & County of Jurisdiction**  
**FY 1998**

Area	Alcohol Violation	Narcotics Possession	Narcotics Distribution	Glue Sniffing	Runaway	Truant	Ungovernable	Carrying / Concealing a Weapon	Disorderly Conduct	Motor Vehicle/Traffic Violation	Loitering	Harassment	Pager at School	Tobacco Violation	Handgun Violation
1. Baltimore City	71	1094	1849	8	9	117	209	240	775	69	330	29	1	0	149
<b>Area 1 Total</b>	<b>71</b>	<b>1094</b>	<b>1849</b>	<b>8</b>	<b>9</b>	<b>117</b>	<b>209</b>	<b>240</b>	<b>775</b>	<b>69</b>	<b>330</b>	<b>29</b>	<b>1</b>	<b>0</b>	<b>149</b>
2. Anne Arundel	351	516	96	4	1	65	5	90	102	134	3	22	7	842	10
Baltimore	276	680	144	4	4	6	25	115	178	117	16	62	10	158	32
Carroll	92	116	12	1	62	31	27	22	18	35	0	14	3	30	1
Harford	138	204	39	1	2	2	1	30	19	42	2	2	5	620	2
Howard	273	191	17	0	35	0	2	36	21	62	0	12	7	79	5
<b>Area 2 Total</b>	<b>1130</b>	<b>1707</b>	<b>308</b>	<b>10</b>	<b>104</b>	<b>104</b>	<b>60</b>	<b>293</b>	<b>338</b>	<b>390</b>	<b>21</b>	<b>112</b>	<b>32</b>	<b>1729</b>	<b>50</b>
3. Allegany	222	59	13	9	54	7	48	6	26	35	1	5	1	98	1
Frederick	165	141	60	0	78	46	34	20	50	31	0	5	6	243	1
Garrett	25	15	0	0	11	27	19	0	1	6	0	3	0	2	1
Montgomery	692	479	73	0	9	0	58	234	58	135	2	3	23	102	5
Washington	160	82	73	0	4	8	145	30	16	46	0	21	1	26	3
<b>Area 3 Total</b>	<b>1264</b>	<b>776</b>	<b>219</b>	<b>9</b>	<b>156</b>	<b>88</b>	<b>304</b>	<b>290</b>	<b>151</b>	<b>253</b>	<b>3</b>	<b>37</b>	<b>31</b>	<b>471</b>	<b>11</b>
4. Caroline	54	31	7	0	45	10	3	6	15	10	0	4	0	8	2
Cecil	101	81	20	2	33	0	2	20	33	41	0	7	3	59	1
Dorchester	25	49	4	0	38	2	0	10	40	16	0	2	1	0	1
Kent	14	39	1	0	14	1	0	3	27	0	0	0	0	42	0
Queen Anne's	68	60	2	0	48	7	3	5	7	9	0	0	0	15	0
Somerset	2	28	8	0	8	0	1	0	3	4	1	0	0	0	0
Talbot	95	35	8	0	38	1	1	5	17	10	0	6	4	29	2
Wicomico	93	84	29	1	58	0	0	12	18	25	0	5	12	31	5
Worcester	448	178	8	0	102	7	2	11	99	31	0	0	0	158	1
<b>Area 4 Total</b>	<b>900</b>	<b>585</b>	<b>87</b>	<b>3</b>	<b>384</b>	<b>28</b>	<b>12</b>	<b>72</b>	<b>259</b>	<b>146</b>	<b>1</b>	<b>24</b>	<b>20</b>	<b>342</b>	<b>12</b>
5. Calvert	84	90	13	0	171	0	1	18	19	16	0	1	1	19	3
Charles	207	112	11	0	8	2	24	29	24	27	0	1	2	13	6
St.Mary's	176	78	11	0	45	0	19	13	23	23	0	6	0	5	1
Prince George's	100	460	191	0	16	7	170	214	152	87	6	13	8	47	34
<b>Area 5 Total</b>	<b>567</b>	<b>740</b>	<b>226</b>	<b>0</b>	<b>240</b>	<b>9</b>	<b>214</b>	<b>274</b>	<b>218</b>	<b>153</b>	<b>6</b>	<b>21</b>	<b>11</b>	<b>84</b>	<b>44</b>
<b>State Total</b>	<b>3932</b>	<b>4902</b>	<b>2689</b>	<b>30</b>	<b>893</b>	<b>346</b>	<b>799</b>	<b>1169</b>	<b>1741</b>	<b>1011</b>	<b>361</b>	<b>223</b>	<b>95</b>	<b>2626</b>	<b>266</b>

**Table 20**  
**Intake Cases by Alleged Offenses & County of Jurisdiction**  
**FY 1998**

Area	Failure to Obey Law	False Report	Reckless Endangerment	Rogue & Vagabond	Telephone Misuse	Unspecified Felony	Misdemeanors	Juris. Total
1. Baltimore City	145	33	8	51	3	6	222	11428
<b>Area 1 Total</b>	<b>145</b>	<b>33</b>	<b>8</b>	<b>51</b>	<b>3</b>	<b>6</b>	<b>222</b>	<b>11428</b>
2. Anne Arundel	3	76	22	0	12	16	53	5730
Baltimore	3	24	7	1	55	23	96	7934
Carroll	0	9	2	0	5	13	47	1183
Harford	2	5	3	2	7	4	78	2096
Howard	0	9	4	1	11	9	40	1980
<b>Area 2 Total</b>	<b>8</b>	<b>123</b>	<b>38</b>	<b>4</b>	<b>90</b>	<b>65</b>	<b>314</b>	<b>18923</b>
3. Allegany	1	6	0	0	4	9	76	1343
Frederick	0	11	4	1	10	10	41	2059
Garrett	0	3	7	0	0	0	10	271
Montgomery	0	15	6	3	27	18	125	4837
Washington	4	5	9	0	6	13	45	1450
<b>Area 3 Total</b>	<b>5</b>	<b>40</b>	<b>26</b>	<b>4</b>	<b>47</b>	<b>50</b>	<b>297</b>	<b>9960</b>
4. Caroline	0	9	4	0	8	0	18	612
Cecil	0	5	6	0	5	6	27	1145
Dorchester	1	0	2	0	5	5	8	542
Kent	0	0	1	0	0	4	8	368
Queen Anne's	0	2	1	0	2	0	3	414
Somerset	0	7	0	0	0	1	12	221
Talbot	0	1	2	0	7	3	16	611
Wicomico	0	4	5	0	5	3	24	1369
Worcester	6	1	0	0	2	0	58	1624
<b>Area 4 Total</b>	<b>7</b>	<b>29</b>	<b>21</b>	<b>0</b>	<b>34</b>	<b>22</b>	<b>174</b>	<b>6906</b>
5. Calvert	0	3	1	0	5	1	13	910
Charles	4	8	2	4	5	5	10	1637
St.Mary's	0	6	2	2	4	3	4	912
Prince George's	24	5	10	10	6	30	82	5056
<b>Area 5 Total</b>	<b>28</b>	<b>22</b>	<b>15</b>	<b>16</b>	<b>20</b>	<b>39</b>	<b>109</b>	<b>8515</b>
<b>State Total</b>	<b>193</b>	<b>247</b>	<b>108</b>	<b>75</b>	<b>194</b>	<b>182</b>	<b>1116</b>	<b>55732</b>

**Table 21  
Intake Cases by Alleged Offenses & County of Residence  
FY 1998**

Area	Aggravated Assault	Simple Assault	Robbery	Sex Offense	Murder	Manslaughter	Kidnapping	Child Abuse	Arson Felony/ Misdemeanors	Auto Theft/ Unauthorized	Breaking & Entering	Carjacking	Malicious Destruction	Theft / Shoplifting	Tampering	Trespassing
1. Baltimore City	357	2487	175	144	32	0	0	9	48	1052	471	7	553	1592	5	398
<b>Area Total</b>	<b>357</b>	<b>2487</b>	<b>175</b>	<b>144</b>	<b>32</b>	<b>0</b>	<b>0</b>	<b>9</b>	<b>48</b>	<b>1052</b>	<b>471</b>	<b>7</b>	<b>553</b>	<b>1592</b>	<b>5</b>	<b>398</b>
2. Anne Arundel	12	1120	43	64	1	0	0	3	27	126	268	0	432	886	13	153
Baltimore	54	1689	159	76	2	1	2	27	59	307	370	4	540	1238	8	188
Carroll	2	245	7	9	0	0	0	0	11	18	52	0	88	193	5	18
Harford	0	307	7	17	0	0	0	0	13	55	69	1	107	296	9	39
Howard	1	363	29	17	0	0	2	0	17	65	74	1	123	274	1	42
<b>Area 2 Total</b>	<b>69</b>	<b>3724</b>	<b>245</b>	<b>183</b>	<b>3</b>	<b>1</b>	<b>4</b>	<b>30</b>	<b>127</b>	<b>571</b>	<b>833</b>	<b>6</b>	<b>1290</b>	<b>2887</b>	<b>36</b>	<b>440</b>
3. Allegany	2	289	0	13	0	0	0	1	0	24	32	0	68	165	4	24
Frederick	2	337	8	16	0	0	1	2	12	47	99	0	153	327	7	26
Garrett	0	32	1	4	0	0	0	0	2	9	13	0	24	27	0	4
Montgomery	3	808	65	59	1	1	1	15	65	169	257	1	241	770	1	72
Washington	2	242	3	22	0	0	1	0	19	31	66	0	73	224	1	12
<b>Area 3 Total</b>	<b>9</b>	<b>1708</b>	<b>77</b>	<b>114</b>	<b>1</b>	<b>1</b>	<b>3</b>	<b>18</b>	<b>98</b>	<b>280</b>	<b>467</b>	<b>1</b>	<b>559</b>	<b>1513</b>	<b>13</b>	<b>138</b>
4. Caroline	0	138	0	6	0	0	0	1	2	12	67	0	63	80	0	2
Cecil	0	255	5	5	1	0	0	0	10	15	44	0	121	189	2	16
Dorchester	3	138	3	4	1	0	0	0	3	8	24	0	34	101	3	6
Kent	0	48	0	0	0	0	0	0	0	10	22	0	27	50	3	4
Queen Anne's	1	74	2	3	0	0	0	0	2	5	20	0	33	46	0	7
Somerset	0	77	1	1	0	0	0	0	2	9	13	0	19	39	0	1
Talbot	0	102	0	9	0	0	0	0	1	17	22	0	43	100	0	4
Wicomico	1	426	6	16	2	0	0	1	12	37	56	1	95	230	3	15
Worcester	0	110	0	7	0	0	0	2	3	15	30	0	50	106	1	5
<b>Area 4 Total</b>	<b>5</b>	<b>1368</b>	<b>17</b>	<b>51</b>	<b>4</b>	<b>0</b>	<b>0</b>	<b>4</b>	<b>35</b>	<b>128</b>	<b>298</b>	<b>1</b>	<b>485</b>	<b>941</b>	<b>12</b>	<b>60</b>
5. Calvert	0	133	1	11	1	0	0	1	6	22	42	0	76	134	0	15
Charles	0	367	15	19	1	0	0	6	12	49	94	1	136	385	2	27
St.Mary's	1	169	3	6	1	0	0	0	10	16	65	0	67	144	0	14
Prince George's	15	748	148	70	9	0	1	19	7	344	366	5	228	994	9	214
<b>Area 5 Total</b>	<b>16</b>	<b>1417</b>	<b>167</b>	<b>106</b>	<b>12</b>	<b>0</b>	<b>1</b>	<b>26</b>	<b>35</b>	<b>431</b>	<b>567</b>	<b>6</b>	<b>507</b>	<b>1657</b>	<b>11</b>	<b>270</b>
<b>Out-of-State</b>	<b>4</b>	<b>109</b>	<b>19</b>	<b>8</b>	<b>0</b>	<b>0</b>	<b>0</b>	<b>1</b>	<b>6</b>	<b>149</b>	<b>58</b>	<b>1</b>	<b>54</b>	<b>448</b>	<b>5</b>	<b>33</b>
<b>County Unknown</b>	<b>8</b>	<b>86</b>	<b>2</b>	<b>11</b>	<b>1</b>	<b>0</b>	<b>0</b>	<b>0</b>	<b>1</b>	<b>25</b>	<b>9</b>	<b>0</b>	<b>16</b>	<b>51</b>	<b>1</b>	<b>11</b>
<b>State Total</b>	<b>468</b>	<b>10899</b>	<b>702</b>	<b>617</b>	<b>53</b>	<b>2</b>	<b>8</b>	<b>88</b>	<b>350</b>	<b>2636</b>	<b>2703</b>	<b>22</b>	<b>3464</b>	<b>9089</b>	<b>83</b>	<b>1350</b>

**Table 21**  
**Intake Cases by Alleged Offenses & County of Residence**  
**FY 1998**

Area	Alcohol Violation	Narcotics Possession	Narcotics Distribution	Glue Sniffing	Runaway	Truant	Ungovernable	Carrying / Concealing a Weapon	Disorderly Conduct	Motor Vehicle/Traffic Violation	Loitering	Harassment	Pager at School	Tobacco Violation	Handgun Violation
1. Baltimore City	128	1128	1770	7	18	114	199	243	763	101	308	28	2	46	146
<b>Area Total</b>	<b>128</b>	<b>1128</b>	<b>1770</b>	<b>7</b>	<b>18</b>	<b>114</b>	<b>199</b>	<b>243</b>	<b>763</b>	<b>101</b>	<b>308</b>	<b>28</b>	<b>2</b>	<b>46</b>	<b>146</b>
2. Anne Arundel	399	516	112	4	19	63	9	91	114	131	5	21	7	734	10
Baltimore	299	667	186	5	19	10	36	111	194	99	31	64	9	214	33
Carroll	105	124	13	1	55	27	24	21	22	35	0	13	3	28	1
Harford	154	225	37	1	3	2	1	29	21	43	2	2	5	594	2
Howard	173	157	16	0	28	1	4	34	20	48	2	11	7	75	5
<b>Area 2 Total</b>	<b>1130</b>	<b>1689</b>	<b>364</b>	<b>11</b>	<b>124</b>	<b>103</b>	<b>74</b>	<b>286</b>	<b>371</b>	<b>356</b>	<b>40</b>	<b>111</b>	<b>31</b>	<b>1645</b>	<b>51</b>
3. Allegany	186	56	17	9	46	9	46	7	26	29	1	5	1	94	2
Frederick	188	133	44	0	75	46	32	20	52	31	0	4	6	233	1
Garrett	16	12	0	0	6	26	21	0	0	4	0	3	0	2	1
Montgomery	636	448	67	0	10	0	56	217	63	126	2	1	21	102	4
Washington	136	73	50	0	7	6	144	29	16	44	0	20	1	32	3
<b>Area 3 Total</b>	<b>1162</b>	<b>722</b>	<b>178</b>	<b>9</b>	<b>144</b>	<b>87</b>	<b>299</b>	<b>273</b>	<b>157</b>	<b>234</b>	<b>3</b>	<b>33</b>	<b>29</b>	<b>463</b>	<b>11</b>
4. Caroline	63	35	6	0	45	9	3	6	14	7	0	8	0	14	2
Cecil	84	82	21	2	32	0	2	19	31	38	0	7	3	56	0
Dorchester	36	34	4	0	33	2	0	10	43	13	0	2	1	0	1
Kent	13	31	2	0	15	0	0	4	25	2	0	0	0	17	0
Queen Anne's	59	42	4	0	39	8	3	5	6	9	0	3	0	48	0
Somerset	4	26	8	0	8	0	1	0	3	3	1	0	0	3	0
Talbot	65	28	6	0	30	2	1	3	16	11	0	2	5	27	0
Wicomico	101	82	29	1	55	0	0	13	22	30	0	5	11	34	5
Worcester	52	45	2	0	57	7	2	3	26	9	0	0	0	70	1
<b>Area 4 Total</b>	<b>477</b>	<b>405</b>	<b>82</b>	<b>3</b>	<b>314</b>	<b>28</b>	<b>12</b>	<b>63</b>	<b>186</b>	<b>122</b>	<b>1</b>	<b>27</b>	<b>20</b>	<b>269</b>	<b>9</b>
5. Calvert	99	84	12	0	148	0	1	15	24	15	0	0	1	21	3
Charles	211	118	14	0	20	2	28	30	25	29	0	1	2	17	6
St.Mary's	145	82	10	0	44	0	21	15	24	21	0	5	0	6	1
Prince George's	127	436	163	0	16	7	157	204	136	91	6	17	8	66	31
<b>Area 5 Total</b>	<b>582</b>	<b>720</b>	<b>199</b>	<b>0</b>	<b>228</b>	<b>9</b>	<b>207</b>	<b>264</b>	<b>209</b>	<b>156</b>	<b>6</b>	<b>23</b>	<b>11</b>	<b>110</b>	<b>41</b>
<b>Out-of-State</b>	<b>415</b>	<b>192</b>	<b>67</b>	<b>0</b>	<b>58</b>	<b>1</b>	<b>4</b>	<b>27</b>	<b>43</b>	<b>39</b>	<b>0</b>	<b>0</b>	<b>1</b>	<b>82</b>	<b>7</b>
<b>County Unknown</b>	<b>38</b>	<b>46</b>	<b>29</b>	<b>0</b>	<b>7</b>	<b>4</b>	<b>4</b>	<b>13</b>	<b>12</b>	<b>3</b>	<b>3</b>	<b>1</b>	<b>1</b>	<b>11</b>	<b>1</b>
<b>State Total</b>	<b>3932</b>	<b>4902</b>	<b>2689</b>	<b>30</b>	<b>893</b>	<b>346</b>	<b>799</b>	<b>1169</b>	<b>1741</b>	<b>1011</b>	<b>361</b>	<b>223</b>	<b>95</b>	<b>2626</b>	<b>266</b>

**Table 21**  
**Intake Cases by Alleged Offenses & County of Residence**  
**FY 1998**

Area	Failure to Obey Law	False Report	Reckless Endangerment	Rogue & Vagabond	Telephone Misuse	Unspecified Felony	Misdemeanors	Juris. Total
1. Baltimore City	130	38	9	43	10	14	225	12800
<b>Area Total</b>	<b>130</b>	<b>38</b>	<b>9</b>	<b>43</b>	<b>10</b>	<b>14</b>	<b>225</b>	<b>12800</b>
2. Anne Arundel	4	70	21	1	14	18	63	5574
Baltimore	15	23	6	6	52	19	99	6921
Carroll	0	7	2	0	4	9	47	1189
Harford	1	5	3	2	7	5	71	2135
Howard	0	6	4	0	6	9	36	1651
<b>Area 2 Total</b>	<b>20</b>	<b>111</b>	<b>36</b>	<b>9</b>	<b>83</b>	<b>60</b>	<b>316</b>	<b>17470</b>
3. Allegany	1	4	1	0	4	1	76	1243
Frederick	0	9	5	1	9	8	40	1974
Garrett	0	3	6	0	1	0	8	225
Montgomery	0	14	5	2	22	20	114	4459
Washington	4	5	9	0	7	9	42	1333
<b>Area 3 Total</b>	<b>5</b>	<b>35</b>	<b>26</b>	<b>3</b>	<b>43</b>	<b>38</b>	<b>280</b>	<b>9234</b>
4. Caroline	0	8	4	0	8	0	18	621
Cecil	0	5	6	0	5	6	34	1096
Dorchester	1	1	2	0	6	5	8	530
Kent	0	0	1	0	0	1	10	285
Queen Anne's	0	2	1	0	1	0	4	427
Somerset	0	7	0	0	0	1	12	239
Talbot	0	2	2	0	6	2	14	520
Wicomico	1	4	5	0	5	4	23	1331
Worcester	2	1	0	0	2	1	19	628
<b>Area 4 Total</b>	<b>4</b>	<b>30</b>	<b>21</b>	<b>0</b>	<b>33</b>	<b>20</b>	<b>142</b>	<b>5677</b>
5. Calvert	0	3	1	0	4	2	13	888
Charles	4	9	3	5	4	5	12	1659
St.Mary's	0	6	1	1	4	3	4	889
Prince George's	23	9	10	9	9	26	83	4811
<b>Area 5 Total</b>	<b>27</b>	<b>27</b>	<b>15</b>	<b>15</b>	<b>21</b>	<b>36</b>	<b>112</b>	<b>8247</b>
<b>Out-of State</b>	<b>4</b>	<b>4</b>	<b>0</b>	<b>3</b>	<b>3</b>	<b>10</b>	<b>34</b>	<b>1889</b>
<b>County Unknown</b>	<b>3</b>	<b>2</b>	<b>1</b>	<b>2</b>	<b>1</b>	<b>4</b>	<b>7</b>	<b>415</b>
<b>State Total</b>	<b>193</b>	<b>247</b>	<b>108</b>	<b>75</b>	<b>194</b>	<b>182</b>	<b>1116</b>	<b>55732</b>

Table 22  
Intake Cases by Alleged Offenses & County of Offense  
FY 1998

Area	Aggravated Assault	Simple Assault	Robbery	Sex Offense	Murder	Manslaughter	Kidnapping	Child Abuse	Arson Felony/ Misdemeanors	Unauthorized Use	Breaking & Entering	Carjacking	Malicious Destruction	Theft / Shoplifting	Tampering	Trespassing
1. Baltimore City	369	2369	124	145	34	0	0	9	49	930	414	6	516	657	4	365
<b>Area 1 Total</b>	<b>369</b>	<b>2369</b>	<b>124</b>	<b>145</b>	<b>34</b>	<b>0</b>	<b>0</b>	<b>9</b>	<b>49</b>	<b>930</b>	<b>414</b>	<b>6</b>	<b>516</b>	<b>657</b>	<b>4</b>	<b>365</b>
2. Anne Arundel	5	1119	48	62	1	0	0	3	26	102	270	0	448	1042	14	154
Baltimore	60	1768	211	81	1	1	1	27	57	426	433	5	552	2037	8	219
Carroll	0	258	4	8	0	0	0	0	10	28	43	0	89	178	5	18
Harford	2	299	8	14	0	0	1	0	16	51	69	1	96	286	8	39
Howard	0	403	31	14	0	0	0	0	19	89	77	1	135	338	1	49
<b>Area 2 Total</b>	<b>67</b>	<b>3847</b>	<b>302</b>	<b>179</b>	<b>2</b>	<b>1</b>	<b>2</b>	<b>30</b>	<b>128</b>	<b>696</b>	<b>892</b>	<b>7</b>	<b>1320</b>	<b>3881</b>	<b>36</b>	<b>479</b>
3. Allegany	1	300	0	13	0	0	0	1	0	29	28	0	73	186	6	24
Frederick	1	353	8	17	0	0	1	0	12	44	109	0	150	362	8	29
Garrett	1	43	1	4	0	0	0	0	2	12	20	0	31	25	0	5
Montgomery	2	816	65	64	2	1	3	14	68	195	281	1	251	903	0	81
Washington	4	247	4	24	0	0	1	0	20	37	68	0	76	253	1	11
<b>Area 3 Total</b>	<b>9</b>	<b>1759</b>	<b>78</b>	<b>122</b>	<b>2</b>	<b>1</b>	<b>5</b>	<b>15</b>	<b>102</b>	<b>317</b>	<b>506</b>	<b>1</b>	<b>581</b>	<b>1729</b>	<b>15</b>	<b>150</b>
4. Caroline	0	135	1	8	0	0	0	0	2	11	59	0	73	84	1	2
Cecil	0	259	5	9	1	0	0	0	10	21	41	0	127	187	1	16
Dorchester	2	147	2	5	1	0	0	0	3	8	29	0	29	97	2	6
Kent	0	81	0	0	0	0	0	0	0	11	24	0	35	55	3	5
Queen Anne's	1	72	2	3	0	0	0	0	2	9	20	0	28	37	0	6
Somerset	0	65	1	1	0	0	0	0	2	9	14	0	16	36	0	1
Talbot	0	117	0	8	0	0	0	0	2	23	25	0	44	108	0	4
Wicomico	1	430	5	18	2	0	0	1	12	45	58	1	97	262	4	14
Worcester	4	136	2	7	0	0	0	2	4	23	25	0	79	214	1	9
<b>Area 4 Total</b>	<b>8</b>	<b>1442</b>	<b>18</b>	<b>59</b>	<b>4</b>	<b>0</b>	<b>0</b>	<b>3</b>	<b>37</b>	<b>160</b>	<b>295</b>	<b>1</b>	<b>528</b>	<b>1080</b>	<b>12</b>	<b>63</b>
5. Calvert	0	137	1	10	0	0	0	1	7	22	51	0	81	121	0	18
Charles	0	354	14	22	1	0	0	6	13	57	91	1	133	408	2	26
St.Mary's	0	174	3	5	0	0	0	1	9	14	65	0	69	135	0	12
Prince George's	5	769	150	62	7	0	1	22	5	413	380	6	230	1004	14	228
<b>Area 5 Total</b>	<b>5</b>	<b>1434</b>	<b>168</b>	<b>99</b>	<b>8</b>	<b>0</b>	<b>1</b>	<b>30</b>	<b>34</b>	<b>506</b>	<b>587</b>	<b>7</b>	<b>513</b>	<b>1668</b>	<b>16</b>	<b>284</b>
<b>Out-of-State</b>	<b>10</b>	<b>48</b>	<b>12</b>	<b>13</b>	<b>3</b>	<b>0</b>	<b>0</b>	<b>1</b>	<b>0</b>	<b>27</b>	<b>9</b>	<b>0</b>	<b>6</b>	<b>74</b>	<b>0</b>	<b>9</b>
<b>State Total</b>	<b>468</b>	<b>10899</b>	<b>702</b>	<b>617</b>	<b>53</b>	<b>2</b>	<b>8</b>	<b>88</b>	<b>350</b>	<b>2636</b>	<b>2703</b>	<b>22</b>	<b>3464</b>	<b>9089</b>	<b>83</b>	<b>1350</b>



**Table 22**  
**Intake Cases by Alleged Offenses & County of Offense**  
**FY 1998**

Area	Alcohol Violation	Narcotics Possession	Narcotics Distribution	Glue Sniffing	Runaway	Truant	Ungovernable	Carrying / Concealing a Weapon	Disorderly Conduct	Motor Vehicle/Traffic Violation	Loitering	Harassment	Pager at School	Tobacco Violation	Handgun Violation
1. Baltimore City	71	1093	1846	8	9	117	209	240	775	67	330	29	1	0	149
<b>Area 1 Total</b>	<b>71</b>	<b>1093</b>	<b>1846</b>	<b>8</b>	<b>9</b>	<b>117</b>	<b>209</b>	<b>240</b>	<b>775</b>	<b>67</b>	<b>330</b>	<b>29</b>	<b>1</b>	<b>0</b>	<b>149</b>
2. Anne Arundel	299	515	96	4	1	65	5	90	102	134	3	22	7	838	9
Baltimore	232	681	145	4	4	6	25	115	177	117	16	62	10	154	32
Carroll	92	115	12	1	62	32	27	22	18	35	0	14	3	30	1
Harford	139	201	39	1	2	2	0	30	19	42	2	3	5	620	2
Howard	268	190	17	0	35	0	2	36	20	62	0	11	7	78	5
<b>Area 2 Total</b>	<b>1030</b>	<b>1702</b>	<b>309</b>	<b>10</b>	<b>104</b>	<b>105</b>	<b>59</b>	<b>293</b>	<b>336</b>	<b>390</b>	<b>21</b>	<b>112</b>	<b>32</b>	<b>1720</b>	<b>49</b>
3. Allegany	219	58	13	9	54	7	48	6	26	35	1	5	1	98	1
Frederick	160	140	60	0	78	46	34	20	50	31	0	5	6	241	1
Garrett	25	15	0	0	11	27	19	0	1	6	0	3	0	2	1
Montgomery	689	472	71	0	7	0	58	232	58	134	2	3	23	102	3
Washington	160	81	73	0	4	8	145	30	15	45	0	21	1	26	3
<b>Area 3 Total</b>	<b>1253</b>	<b>766</b>	<b>217</b>	<b>9</b>	<b>154</b>	<b>88</b>	<b>304</b>	<b>288</b>	<b>150</b>	<b>251</b>	<b>3</b>	<b>37</b>	<b>31</b>	<b>469</b>	<b>9</b>
4. Caroline	54	31	7	0	45	10	3	6	15	10	0	4	0	8	1
Cecil	98	80	19	2	33	0	2	19	32	39	0	6	3	59	1
Dorchester	25	50	4	0	38	2	0	10	40	16	0	2	1	0	1
Kent	14	40	1	0	14	1	0	3	27	0	0	0	0	42	0
Queen Anne's	68	60	2	0	48	7	3	5	7	9	0	0	0	15	0
Somerset	2	29	7	0	8	0	1	0	3	4	1	0	0	0	0
Talbot	95	35	8	0	38	1	1	5	17	9	0	6	4	29	2
Wicomico	94	83	29	1	58	0	0	12	18	24	0	5	12	32	5
Worcester	566	177	8	0	102	7	2	11	99	30	0	0	0	169	1
<b>Area 4 Total</b>	<b>1016</b>	<b>585</b>	<b>85</b>	<b>3</b>	<b>384</b>	<b>28</b>	<b>12</b>	<b>71</b>	<b>258</b>	<b>141</b>	<b>1</b>	<b>23</b>	<b>20</b>	<b>354</b>	<b>11</b>
5. Calvert	81	90	13	0	171	0	1	18	19	16	0	1	1	19	3
Charles	207	112	10	0	8	2	24	29	24	27	0	1	2	13	5
St.Mary's	174	77	11	0	45	0	19	13	23	23	0	6	0	5	1
Prince George's	98	453	187	0	16	5	169	212	151	86	6	13	8	46	29
<b>Area 5 Total</b>	<b>560</b>	<b>732</b>	<b>221</b>	<b>0</b>	<b>240</b>	<b>7</b>	<b>213</b>	<b>272</b>	<b>217</b>	<b>152</b>	<b>6</b>	<b>21</b>	<b>11</b>	<b>83</b>	<b>38</b>
<b>Out-of-State</b>	<b>2</b>	<b>24</b>	<b>11</b>	<b>0</b>	<b>2</b>	<b>1</b>	<b>2</b>	<b>5</b>	<b>5</b>	<b>10</b>	<b>0</b>	<b>1</b>	<b>0</b>	<b>0</b>	<b>10</b>
<b>State Total</b>	<b>3932</b>	<b>4902</b>	<b>2689</b>	<b>30</b>	<b>893</b>	<b>346</b>	<b>799</b>	<b>1169</b>	<b>1741</b>	<b>1011</b>	<b>361</b>	<b>223</b>	<b>95</b>	<b>2626</b>	<b>266</b>

**Table 22**  
**Intake Cases by Alleged Offenses & County of Offense**  
**FY 1998**

Area	Failure to Obey Law	False Report	Reckless Endangerment	Rogue & Vagabond	Telephone Misuse	Unspecified Felony	Misdemeanors	Juris. Total
1. Baltimore City	145	33	7	51	3	6	219	11399
<b>Area 1 Total</b>	<b>145</b>	<b>33</b>	<b>7</b>	<b>51</b>	<b>3</b>	<b>6</b>	<b>219</b>	<b>11399</b>
2. Anne Arundel	3	76	22	0	12	16	52	5665
Baltimore	3	24	7	1	55	23	95	7875
Carroll	0	9	2	0	5	13	47	1181
Harford	2	5	3	2	7	5	78	2099
Howard	0	9	4	1	11	8	37	1958
<b>Area 2 Total</b>	<b>8</b>	<b>123</b>	<b>38</b>	<b>4</b>	<b>90</b>	<b>65</b>	<b>309</b>	<b>18778</b>
3. Allegany	1	6	0	0	4	9	76	1338
Frederick	0	11	4	1	10	10	41	2043
Garrett	0	3	7	0	0	0	10	274
Montgomery	0	15	5	3	27	18	124	4793
Washington	4	5	9	0	6	13	45	1440
<b>Area 3 Total</b>	<b>5</b>	<b>40</b>	<b>25</b>	<b>4</b>	<b>47</b>	<b>50</b>	<b>296</b>	<b>9888</b>
4. Caroline	0	9	4	0	8	0	18	609
Cecil	0	4	6	0	5	6	27	1118
Dorchester	1	0	2	0	5	5	8	541
Kent	0	0	1	0	0	4	8	369
Queen Anne's	0	2	1	0	2	0	3	412
Somerset	0	7	0	0	0	1	9	217
Talbot	0	1	2	0	7	3	16	610
Wicomico	0	4	3	0	5	3	23	1361
Worcester	6	1	0	0	2	0	57	1744
<b>Area 4 Total</b>	<b>7</b>	<b>28</b>	<b>19</b>	<b>0</b>	<b>34</b>	<b>22</b>	<b>169</b>	<b>6981</b>
5. Calvert	0	3	1	0	5	1	13	905
Charles	4	8	2	4	5	5	9	1629
St.Mary's	0	6	1	2	4	3	4	904
Prince George's	19	5	10	10	6	28	77	4930
<b>Area 5 Total</b>	<b>23</b>	<b>22</b>	<b>14</b>	<b>16</b>	<b>20</b>	<b>37</b>	<b>103</b>	<b>8368</b>
<b>Out-of State</b>	<b>5</b>	<b>1</b>	<b>5</b>	<b>0</b>	<b>0</b>	<b>2</b>	<b>20</b>	<b>318</b>
<b>State Total</b>	<b>193</b>	<b>247</b>	<b>108</b>	<b>75</b>	<b>194</b>	<b>182</b>	<b>1116</b>	<b>55732</b>

Table 23

**Intake Cases by Alleged Offenses and County of Jurisdiction for African-American Youth  
FY 1998**

Area	Aggravated Assault	Simple Assault	Robbery	Sex Offense	Murder	Manslaughter	Kidnapping	Child Abuse	Arson Felony/ Misdemeanors	Auto Theft/ Unauthorized	Breaking & Entering	Carjacking	Malicious Destruction	Theft/ Shoplifting	Tampering	Trespassing
1. Baltimore City	333	2052	117	121	33	0	0	9	40	808	307	4	415	543	4	299
<b>Area 1 Total</b>	<b>333</b>	<b>2052</b>	<b>117</b>	<b>121</b>	<b>33</b>	<b>0</b>	<b>0</b>	<b>9</b>	<b>40</b>	<b>808</b>	<b>307</b>	<b>4</b>	<b>415</b>	<b>543</b>	<b>4</b>	<b>299</b>
2. Anne Arundel	2	432	28	27	1	0	0	2	7	32	54	0	111	420	4	49
Baltimore	36	858	147	35	1	0	0	6	10	277	213	2	152	1309	3	100
Carroll	0	19	1	1	0	0	0	0	0	2	1	0	4	12	0	1
Harford	1	92	6	0	0	0	0	0	2	22	9	0	17	99	0	18
Howard	0	211	22	8	0	0	0	0	5	51	17	1	34	146	0	28
<b>Area 2 Total</b>	<b>39</b>	<b>1612</b>	<b>204</b>	<b>71</b>	<b>2</b>	<b>0</b>	<b>0</b>	<b>8</b>	<b>24</b>	<b>384</b>	<b>294</b>	<b>3</b>	<b>318</b>	<b>1986</b>	<b>7</b>	<b>196</b>
3. Allegany	0	40	0	0	0	0	0	0	0	4	4	0	9	15	0	2
Frederick	0	108	8	4	0	0	0	0	1	4	23	0	20	82	1	20
Garrett	0	7	0	0	0	0	0	0	0	6	1	0	1	1	0	0
Montgomery	1	435	52	31	2	0	3	2	23	108	126	1	84	474	0	26
Washington	2	41	1	3	0	0	0	0	3	6	3	0	8	34	0	2
<b>Area 3 Total</b>	<b>3</b>	<b>631</b>	<b>61</b>	<b>38</b>	<b>2</b>	<b>0</b>	<b>3</b>	<b>2</b>	<b>27</b>	<b>128</b>	<b>157</b>	<b>1</b>	<b>122</b>	<b>606</b>	<b>1</b>	<b>50</b>
4. Caroline	0	49	1	1	0	0	0	0	2	5	3	0	7	32	1	0
Cecil	0	39	0	1	1	0	0	0	0	4	2	0	9	19	0	2
Dorchester	2	87	2	2	1	0	0	0	2	2	11	0	11	62	2	2
Kent	0	52	0	0	0	0	0	0	0	5	13	0	20	29	3	0
Queen Anne's	0	29	2	1	0	0	0	0	0	3	2	0	2	14	0	3
Somerset	0	41	1	0	0	0	0	0	1	9	8	0	9	24	0	0
Talbot	0	68	0	6	0	0	0	0	1	12	7	0	12	46	0	0
Wicomico	0	286	2	9	1	0	0	1	7	27	18	1	37	131	1	12
Worcester	0	60	0	4	0	0	0	1	0	3	9	0	18	50	0	1
<b>Area 4 Total</b>	<b>2</b>	<b>711</b>	<b>8</b>	<b>24</b>	<b>3</b>	<b>0</b>	<b>0</b>	<b>2</b>	<b>13</b>	<b>70</b>	<b>73</b>	<b>1</b>	<b>125</b>	<b>407</b>	<b>7</b>	<b>20</b>
5. Calvert	0	37	1	4	0	0	0	1	1	6	12	0	17	29	0	4
Charles	0	178	13	10	1	0	0	2	2	17	36	1	40	189	0	7
St.Mary's	1	66	3	1	1	0	0	0	2	0	15	0	20	42	0	8
Prince George's	13	664	141	61	6	0	1	18	1	353	288	5	158	762	12	180
<b>Area 5 Total</b>	<b>14</b>	<b>945</b>	<b>158</b>	<b>76</b>	<b>8</b>	<b>0</b>	<b>1</b>	<b>21</b>	<b>6</b>	<b>376</b>	<b>351</b>	<b>6</b>	<b>235</b>	<b>1022</b>	<b>12</b>	<b>199</b>
<b>State Total</b>	<b>391</b>	<b>5951</b>	<b>548</b>	<b>330</b>	<b>48</b>	<b>0</b>	<b>4</b>	<b>42</b>	<b>110</b>	<b>1766</b>	<b>1182</b>	<b>15</b>	<b>1215</b>	<b>4564</b>	<b>31</b>	<b>764</b>

Table 23

**Intake Cases by Alleged Offenses and County of Jurisdiction for African-American Youth  
FY 1998**

Area	Alcohol Violation	Narcotics Possession	Narcotics Distribution	Glue Sniffing	Runaway	Truant	Ungovernable	Carrying / Concealing a Weapon	Disorderly Conduct	Motor Vehicle/Traffic Violation	Loitering	Harassment	Pager at School	Tobacco Violation	Handgun Violation
1. Baltimore City	54	980	1763	0	5	98	198	219	686	55	307	20	1	0	135
<b>Area 1 Total</b>	<b>54</b>	<b>980</b>	<b>1763</b>	<b>0</b>	<b>5</b>	<b>98</b>	<b>198</b>	<b>219</b>	<b>686</b>	<b>55</b>	<b>307</b>	<b>20</b>	<b>1</b>	<b>0</b>	<b>135</b>
2. Anne Arundel	32	80	46	1	0	13	0	31	48	22	2	6	2	54	4
Baltimore	23	253	89	0	1	1	4	58	112	46	4	11	6	21	22
Carroll	2	7	1	0	10	3	2	1	2	2	0	0	0	0	0
Harford	9	43	29	0	0	0	0	7	9	8	0	0	0	47	2
Howard	10	45	9	0	12	0	0	5	7	11	0	8	1	5	1
<b>Area 2 Total</b>	<b>76</b>	<b>428</b>	<b>174</b>	<b>1</b>	<b>23</b>	<b>17</b>	<b>6</b>	<b>102</b>	<b>178</b>	<b>89</b>	<b>6</b>	<b>25</b>	<b>9</b>	<b>127</b>	<b>29</b>
3. Allegany	3	2	1	1	2	2	3	0	3	2	0	1	0	6	0
Frederick	22	30	37	0	16	4	6	2	15	5	0	0	1	47	0
Garrett	0	0	0	0	6	0	0	0	1	0	0	0	0	0	0
Montgomery	88	155	38	0	2	0	24	82	36	44	1	3	11	19	3
Washington	18	20	41	0	1	1	12	4	4	6	0	1	0	3	0
<b>Area 3 Total</b>	<b>131</b>	<b>207</b>	<b>117</b>	<b>1</b>	<b>27</b>	<b>7</b>	<b>45</b>	<b>88</b>	<b>59</b>	<b>57</b>	<b>1</b>	<b>5</b>	<b>12</b>	<b>75</b>	<b>3</b>
4. Caroline	4	9	4	0	8	2	0	3	8	0	0	1	0	2	0
Cecil	7	5	3	0	2	0	0	2	12	5	0	1	0	1	0
Dorchester	2	14	3	0	16	1	0	4	31	6	0	1	1	0	1
Kent	1	23	1	0	3	1	0	2	20	0	0	0	0	11	0
Queen Anne's	7	5	0	0	7	0	2	0	2	3	0	0	0	3	0
Somerset	0	14	5	0	2	0	0	0	3	2	1	0	0	0	0
Talbot	15	7	7	0	7	1	1	2	9	2	0	0	1	4	0
Wicomico	10	29	21	0	20	0	0	3	15	9	0	0	8	3	5
Worcester	21	16	2	0	7	1	2	5	28	5	0	0	0	4	1
<b>Area 4 Total</b>	<b>67</b>	<b>122</b>	<b>46</b>	<b>0</b>	<b>72</b>	<b>6</b>	<b>5</b>	<b>21</b>	<b>128</b>	<b>32</b>	<b>1</b>	<b>3</b>	<b>10</b>	<b>28</b>	<b>7</b>
5. Calvert	2	15	5	0	38	0	0	7	1	2	0	0	0	4	0
Charles	37	35	5	0	2	0	4	11	12	11	0	0	2	2	4
St.Mary's	24	19	3	0	10	0	8	2	14	6	0	1	0	1	1
Prince George's	65	332	169	0	11	4	136	173	120	63	6	9	7	26	32
<b>Area 5 Total</b>	<b>128</b>	<b>401</b>	<b>182</b>	<b>0</b>	<b>61</b>	<b>4</b>	<b>148</b>	<b>193</b>	<b>147</b>	<b>82</b>	<b>6</b>	<b>10</b>	<b>9</b>	<b>33</b>	<b>37</b>
<b>State Total</b>	<b>456</b>	<b>2138</b>	<b>2282</b>	<b>2</b>	<b>188</b>	<b>132</b>	<b>402</b>	<b>623</b>	<b>1198</b>	<b>315</b>	<b>321</b>	<b>63</b>	<b>41</b>	<b>263</b>	<b>211</b>

Table 23

page 3 of 3

**Intake Cases by Alleged Offenses and County of Jurisdiction for African-American Youth  
FY 1998**

Area	Failure to Obey Law	False Report	Reckless Endangerment	Rogue & Vagabond	Telephone Misuse	Unspecified Felony	Misdemeanors	Juris. Total
1. Baltimore City	127	30	8	36	2	6	188	10003
<b>Area 1 Total</b>	<b>127</b>	<b>30</b>	<b>8</b>	<b>36</b>	<b>2</b>	<b>6</b>	<b>188</b>	<b>10003</b>
2. Anne Arundel	1	10	7	0	2	2	17	1549
Baltimore	2	9	1	0	10	6	37	3865
Carroll	0	0	0	0	1	4	1	77
Harford	1	2	1	0	2	1	24	451
Howard	0	2	1	1	3	1	17	662
<b>Area 2 Total</b>	<b>4</b>	<b>23</b>	<b>10</b>	<b>1</b>	<b>18</b>	<b>14</b>	<b>96</b>	<b>6604</b>
3. Allegany	1	1	0	0	0	3	5	110
Frederick	0	2	1	0	1	3	11	474
Garrett	0	0	0	0	0	0	1	24
Montgomery	0	5	2	1	8	5	36	1931
Washington	3	1	0	0	0	2	13	233
<b>Area 3 Total</b>	<b>4</b>	<b>9</b>	<b>3</b>	<b>1</b>	<b>9</b>	<b>13</b>	<b>66</b>	<b>2772</b>
4. Caroline	0	2	1	0	2	0	1	148
Cecil	0	0	0	0	0	0	2	117
Dorchester	0	0	2	0	4	4	5	281
Kent	0	0	0	0	0	0	2	186
Queen Anne's	0	0	0	0	0	0	1	86
Somerset	0	4	0	0	0	1	6	131
Talbot	0	0	2	0	1	3	4	218
Wicomico	0	1	2	0	3	0	10	672
Worcester	2	0	0	0	2	0	7	249
<b>Area 4 Total</b>	<b>2</b>	<b>7</b>	<b>7</b>	<b>0</b>	<b>12</b>	<b>8</b>	<b>38</b>	<b>2088</b>
5. Calvert	0	0	0	0	1	0	3	190
Charles	2	2	2	2	1	4	2	636
St.Mary's	0	1	0	1	2	1	2	255
Prince George's	16	5	9	7	2	25	64	3944
<b>Area 5 Total</b>	<b>18</b>	<b>8</b>	<b>11</b>	<b>10</b>	<b>6</b>	<b>30</b>	<b>71</b>	<b>5025</b>
<b>State Total</b>	<b>155</b>	<b>77</b>	<b>39</b>	<b>48</b>	<b>47</b>	<b>71</b>	<b>459</b>	<b>26492</b>

**Table 24**  
**Intake Cases by Alleged Offenses and County of Jurisdiction for Caucasian Youth**  
**FY 1998**

Area	Aggravated Assault	Simple Assault	Robbery	Sex Offense	Murder	Manslaughter	Kidnapping	Child Abuse	Arson Felony/ Misdemeanors	Auto Theft/ Unauthorized	Breaking & Entering	Carjacking	Malicious Destruction	Theft / Shoplifting	Tampering	Trespassing
1. Baltimore City	35	319	7	25	1	0	0	0	9	121	106	2	97	114	0	67
<b>Area 1 Total</b>	<b>35</b>	<b>319</b>	<b>7</b>	<b>25</b>	<b>1</b>	<b>0</b>	<b>0</b>	<b>0</b>	<b>9</b>	<b>121</b>	<b>106</b>	<b>2</b>	<b>97</b>	<b>114</b>	<b>0</b>	<b>67</b>
2. Anne Arundel	3	660	20	35	0	0	0	1	18	67	212	0	328	604	10	106
Baltimore	21	903	65	46	0	1	2	20	47	145	210	3	395	703	5	114
Carroll	0	237	2	6	0	0	0	0	10	25	42	0	85	166	5	16
Harford	1	205	2	13	0	0	0	0	12	28	56	1	78	181	8	21
Howard	0	182	10	7	0	0	0	0	15	36	60	0	98	175	0	20
<b>Area 2 Total</b>	<b>25</b>	<b>2187</b>	<b>99</b>	<b>107</b>	<b>0</b>	<b>1</b>	<b>2</b>	<b>21</b>	<b>102</b>	<b>301</b>	<b>580</b>	<b>4</b>	<b>984</b>	<b>1829</b>	<b>28</b>	<b>277</b>
3. Allegany	1	257	0	11	0	0	0	1	0	25	28	0	66	170	6	22
Frederick	1	237	1	13	0	0	1	0	11	40	82	0	128	275	7	8
Garrett	1	35	1	5	0	0	0	0	2	7	16	0	29	23	0	5
Montgomery	1	294	7	26	0	1	0	9	38	42	118	0	137	277	0	35
Washington	2	198	3	21	0	0	1	0	16	31	64	0	65	210	1	9
<b>Area 3 Total</b>	<b>6</b>	<b>1021</b>	<b>12</b>	<b>76</b>	<b>0</b>	<b>1</b>	<b>2</b>	<b>10</b>	<b>67</b>	<b>145</b>	<b>308</b>	<b>0</b>	<b>425</b>	<b>955</b>	<b>14</b>	<b>79</b>
4. Caroline	0	84	0	7	0	0	0	0	0	6	57	0	65	52	0	2
Cecil	0	219	5	7	0	0	0	0	9	18	39	0	117	170	1	16
Dorchester	0	62	0	3	0	0	0	0	1	6	18	0	18	35	0	4
Kent	0	29	0	0	0	0	0	0	0	6	11	0	11	26	0	4
Queen Anne's	1	43	0	2	0	0	0	0	2	6	18	0	26	24	0	3
Somerset	0	25	0	1	0	0	0	0	1	0	6	0	7	12	0	1
Talbot	0	48	0	2	0	0	0	0	1	11	18	0	32	58	0	4
Wicomico	1	137	2	9	0	0	0	0	5	19	40	0	58	123	3	2
Worcester	3	74	2	5	0	0	0	1	4	19	18	0	57	157	1	8
<b>Area 4 Total</b>	<b>5</b>	<b>721</b>	<b>9</b>	<b>36</b>	<b>0</b>	<b>0</b>	<b>0</b>	<b>1</b>	<b>23</b>	<b>91</b>	<b>225</b>	<b>0</b>	<b>391</b>	<b>657</b>	<b>5</b>	<b>44</b>
5. Calvert	0	101	0	7	0	0	0	0	6	16	38	0	63	93	0	14
Charles	0	176	1	12	0	0	0	4	11	39	53	0	94	210	2	19
St.Mary's	0	103	0	4	0	0	0	1	7	14	49	0	49	89	0	4
Prince George's	0	80	12	6	0	0	0	3	4	40	76	1	41	150	2	23
<b>Area 5 Total</b>	<b>0</b>	<b>460</b>	<b>13</b>	<b>29</b>	<b>0</b>	<b>0</b>	<b>0</b>	<b>8</b>	<b>28</b>	<b>109</b>	<b>216</b>	<b>1</b>	<b>247</b>	<b>542</b>	<b>4</b>	<b>60</b>
<b>State Total</b>	<b>71</b>	<b>4708</b>	<b>140</b>	<b>273</b>	<b>1</b>	<b>2</b>	<b>4</b>	<b>40</b>	<b>229</b>	<b>767</b>	<b>1435</b>	<b>7</b>	<b>2144</b>	<b>4097</b>	<b>51</b>	<b>527</b>

**Table 24**  
**Intake Cases by Alleged Offenses and County of Jurisdiction for Caucasian Youth**  
**FY 1998**

Area	Alcohol Violation	Narcotics Possession	Narcotics Distribution	Glue Sniffing	Runaway	Truant	Ungovernable	Carrying / Concealing a Weapon	Disorderly Conduct	Motor Vehicle/Traffic Violation	Loitering	Harassment	Pager at School	Tobacco Violation	Handgun Violation
1. Baltimore City	17	104	80	8	2	19	11	20	87	14	23	9	0	0	14
<b>Area 1 Total</b>	<b>17</b>	<b>104</b>	<b>80</b>	<b>8</b>	<b>2</b>	<b>19</b>	<b>11</b>	<b>20</b>	<b>87</b>	<b>14</b>	<b>23</b>	<b>9</b>	<b>0</b>	<b>0</b>	<b>14</b>
2. Anne Arundel	316	423	49	3	1	48	5	57	53	106	1	16	5	779	6
Baltimore	250	421	55	4	3	5	21	55	66	68	12	51	4	134	10
Carroll	90	109	11	1	51	28	25	21	15	33	0	14	3	29	1
Harford	128	160	10	1	2	2	1	23	10	34	2	2	4	566	0
Howard	258	145	7	0	21	0	2	26	14	47	0	4	4	67	4
<b>Area 2 Total</b>	<b>1042</b>	<b>1258</b>	<b>132</b>	<b>9</b>	<b>78</b>	<b>83</b>	<b>54</b>	<b>182</b>	<b>158</b>	<b>288</b>	<b>15</b>	<b>87</b>	<b>20</b>	<b>1575</b>	<b>21</b>
3. Allegany	219	57	12	8	52	5	45	6	23	33	1	4	1	92	1
Frederick	140	111	22	0	62	40	27	17	34	24	0	5	5	193	1
Garrett	25	15	0	0	5	27	19	0	0	6	0	3	0	2	1
Montgomery	529	272	29	0	5	0	27	122	14	70	0	0	6	69	2
Washington	139	60	24	0	3	7	129	26	11	33	0	20	1	22	3
<b>Area 3 Total</b>	<b>1052</b>	<b>515</b>	<b>87</b>	<b>8</b>	<b>127</b>	<b>79</b>	<b>247</b>	<b>171</b>	<b>82</b>	<b>166</b>	<b>1</b>	<b>32</b>	<b>13</b>	<b>378</b>	<b>8</b>
4. Caroline	49	22	3	0	37	8	3	3	7	9	0	3	0	6	2
Cecil	94	76	17	2	29	0	2	17	21	36	0	6	3	58	1
Dorchester	23	35	1	0	22	1	0	6	9	9	0	1	0	0	0
Kent	13	16	0	0	10	0	0	1	6	0	0	0	0	31	0
Queen Anne's	59	53	2	0	40	7	1	5	5	6	0	0	0	12	0
Somerset	2	14	3	0	6	0	1	0	0	2	0	0	0	0	0
Talbot	80	28	0	0	30	0	0	3	8	8	0	6	3	24	2
Wicomico	79	54	7	1	35	0	0	9	3	16	0	5	4	27	0
Worcester	416	157	6	0	93	6	0	5	67	25	0	0	0	153	0
<b>Area 4 Total</b>	<b>815</b>	<b>455</b>	<b>39</b>	<b>3</b>	<b>302</b>	<b>22</b>	<b>7</b>	<b>49</b>	<b>126</b>	<b>111</b>	<b>0</b>	<b>21</b>	<b>10</b>	<b>311</b>	<b>5</b>
5. Calvert	82	74	8	0	130	0	1	11	18	14	0	1	1	15	3
Charles	170	77	6	0	6	2	20	18	12	16	0	1	0	11	2
St.Mary's	151	59	8	0	34	0	11	11	9	17	0	5	0	4	0
Prince George's	21	99	9	0	4	2	22	25	21	16	0	4	0	16	2
<b>Area 5 Total</b>	<b>424</b>	<b>309</b>	<b>31</b>	<b>0</b>	<b>174</b>	<b>4</b>	<b>54</b>	<b>65</b>	<b>60</b>	<b>63</b>	<b>0</b>	<b>11</b>	<b>1</b>	<b>46</b>	<b>7</b>
<b>State Total</b>	<b>3350</b>	<b>2641</b>	<b>369</b>	<b>28</b>	<b>683</b>	<b>207</b>	<b>373</b>	<b>487</b>	<b>513</b>	<b>642</b>	<b>39</b>	<b>160</b>	<b>44</b>	<b>2310</b>	<b>55</b>

Intake Cases by Alleged Offenses and County of Jurisdiction for Caucasian Youth  
FY 1998

Area	Failure to Obey Law	False Report	Reckless Endangerment	Rogue & Vagabond	Telephone Misuse	Unspecified Felony	Misdemeanors	Juris. Total
1. Baltimore City	18	3	0	14	1	0	32	1379
<b>Area 1 Total</b>	<b>18</b>	<b>3</b>	<b>0</b>	<b>14</b>	<b>1</b>	<b>0</b>	<b>32</b>	<b>1379</b>
2. Anne Arundel	2	64	15	0	10	14	32	4069
Baltimore	1	15	6	0	44	17	56	3978
Carroll	0	9	2	0	4	9	46	1095
Harford	0	3	2	2	5	3	53	1619
Howard	0	7	3	0	7	8	23	1250
<b>Area 2 Total</b>	<b>3</b>	<b>98</b>	<b>28</b>	<b>2</b>	<b>70</b>	<b>51</b>	<b>210</b>	<b>12011</b>
3. Allegany	0	5	0	0	4	6	71	1232
Frederick	0	9	3	1	9	7	27	1541
Garrett	0	3	7	0	0	0	9	246
Montgomery	0	7	3	0	18	11	71	2240
Washington	1	4	9	0	5	10	29	1157
<b>Area 3 Total</b>	<b>1</b>	<b>28</b>	<b>22</b>	<b>1</b>	<b>36</b>	<b>34</b>	<b>207</b>	<b>6416</b>
4. Caroline	0	7	3	0	6	0	17	458
Cecil	0	5	6	0	5	6	25	1010
Dorchester	1	0	0	0	1	1	3	260
Kent	0	0	1	0	0	3	6	174
Queen Anne's	0	2	1	0	2	0	2	322
Somerset	0	3	0	0	0	0	6	90
Talbot	0	1	0	0	6	0	12	385
Wicomico	0	3	3	0	2	3	14	664
Worcester	4	1	0	0	0	0	46	1328
<b>Area 4 Total</b>	<b>5</b>	<b>22</b>	<b>14</b>	<b>0</b>	<b>22</b>	<b>13</b>	<b>131</b>	<b>4691</b>
5. Calvert	0	3	1	0	4	1	10	715
Charles	2	6	0	2	4	1	8	985
St.Mary's	0	5	1	1	2	2	1	641
Prince George's	2	0	2	0	4	2	15	704
<b>Area 5 Total</b>	<b>4</b>	<b>14</b>	<b>4</b>	<b>3</b>	<b>14</b>	<b>6</b>	<b>34</b>	<b>3045</b>
<b>State Total</b>	<b>31</b>	<b>165</b>	<b>68</b>	<b>20</b>	<b>143</b>	<b>104</b>	<b>614</b>	<b>27542</b>



**Table 25**  
**Intake Cases by Alleged Offenses and County of Jurisdiction for Hispanic Youth**  
**FY 1998**

Area	Aggravated Assault	Simple Assault	Robbery	Sex Offense	Murder	Manslaughter	Kidnapping	Child Abuse	Arson Felony/ Misdemeanors	Auto Theft/ Unauthorized Use	Breaking & Entering	Carjacking	Malicious Destruction	Theft / Shoplifting	Tampering	Trespassing
1. Baltimore City	0	5	0	0	0	0	0	0	0	2	1	0	1	1	0	1
<b>Area 1 Total</b>	<b>0</b>	<b>5</b>	<b>0</b>	<b>0</b>	<b>0</b>	<b>0</b>	<b>0</b>	<b>0</b>	<b>0</b>	<b>2</b>	<b>1</b>	<b>0</b>	<b>1</b>	<b>1</b>	<b>0</b>	<b>1</b>
2. Anne Arundel	0	15	0	0	0	0	0	0	1	1	4	0	5	11	0	0
Baltimore	0	1	1	0	0	0	0	0	0	2	4	0	0	9	0	2
Carroll	0	1	0	1	0	0	0	0	0	1	0	0	0	2	0	1
Harford	0	2	0	0	0	0	0	0	0	1	3	0	0	3	0	0
Howard	0	0	0	0	0	0	0	0	0	0	0	0	0	3	0	0
<b>Area 2 Total</b>	<b>0</b>	<b>19</b>	<b>1</b>	<b>1</b>	<b>0</b>	<b>0</b>	<b>0</b>	<b>0</b>	<b>1</b>	<b>5</b>	<b>11</b>	<b>0</b>	<b>5</b>	<b>28</b>	<b>0</b>	<b>3</b>
3. Allegany	0	0	0	0	0	0	0	0	0	0	0	0	0	1	0	0
Frederick	0	4	0	0	0	0	0	0	0	1	2	0	1	6	0	1
Garrett	0	0	0	0	0	0	0	0	0	39	0	0	0	0	0	0
Montgomery	0	68	4	7	0	0	0	2	3	1	23	0	20	107	0	15
Washington	0	7	0	0	0	0	0	0	1	0	1	0	2	2	0	0
<b>Area 3 Total</b>	<b>0</b>	<b>79</b>	<b>4</b>	<b>7</b>	<b>0</b>	<b>0</b>	<b>0</b>	<b>2</b>	<b>4</b>	<b>41</b>	<b>26</b>	<b>0</b>	<b>23</b>	<b>116</b>	<b>0</b>	<b>16</b>
4. Caroline	0	1	0	0	0	0	0	0	0	0	0	0	1	1	0	0
Cecil	0	5	0	0	0	0	0	0	1	0	0	0	1	2	0	0
Dorchester	0	0	0	0	0	0	0	0	0	0	0	0	0	0	0	0
Kent	0	0	0	0	0	0	0	0	0	0	0	0	2	0	0	1
Queen Anne's	0	0	0	1	0	0	0	0	0	0	0	0	0	0	0	0
Somerset	0	0	0	0	0	0	0	0	0	0	0	0	0	0	0	0
Talbot	0	0	0	0	0	0	0	0	0	0	0	0	0	0	0	0
Wicomico	0	3	0	0	0	0	0	0	0	0	0	0	0	6	0	0
Worcester	0	1	0	0	0	0	0	0	0	1	0	0	2	1	0	0
<b>Area 4 Total</b>	<b>0</b>	<b>10</b>	<b>0</b>	<b>1</b>	<b>0</b>	<b>0</b>	<b>0</b>	<b>0</b>	<b>1</b>	<b>1</b>	<b>0</b>	<b>0</b>	<b>6</b>	<b>10</b>	<b>0</b>	<b>1</b>
5. Calvert	0	0	0	0	0	0	0	0	0	0	0	0	0	0	0	0
Charles	0	0	0	0	0	0	0	0	0	0	1	0	0	5	0	0
St.Mary's	0	0	0	0	0	0	0	0	0	0	0	0	0	0	0	0
Prince George's	0	9	2	2	2	0	0	1	0	27	8	0	17	36	0	17
<b>Area 5 Total</b>	<b>0</b>	<b>9</b>	<b>2</b>	<b>2</b>	<b>2</b>	<b>0</b>	<b>0</b>	<b>1</b>	<b>0</b>	<b>27</b>	<b>9</b>	<b>0</b>	<b>17</b>	<b>41</b>	<b>0</b>	<b>17</b>
<b>State Total</b>	<b>0</b>	<b>122</b>	<b>7</b>	<b>11</b>	<b>2</b>	<b>0</b>	<b>0</b>	<b>3</b>	<b>6</b>	<b>76</b>	<b>47</b>	<b>0</b>	<b>52</b>	<b>196</b>	<b>0</b>	<b>38</b>

**Table 25**  
**Intake Cases by Alleged Offenses and County of Jurisdiction for Hispanic Youth**  
**FY 1998**

Area	Alcohol Violation	Narcotics Possession	Narcotics Distribution	Glue Sniffing	Runaway	Truant	Ungovernable	Carrying / Concealing a Weapon	Disorderly Conduct	Motor Vehicle/Traffic Violation	Loitering	Harassment	Pager at School	Tobacco Violation	Handgun Violation
1. Baltimore City	0	1	0	0	2	0	0	1	0	0	0	0	0	0	0
<b>Area 1 Total</b>	<b>0</b>	<b>1</b>	<b>0</b>	<b>0</b>	<b>2</b>	<b>0</b>	<b>0</b>	<b>1</b>	<b>0</b>	<b>0</b>	<b>0</b>	<b>0</b>	<b>0</b>	<b>0</b>	<b>0</b>
2. Anne Arundel	2	7	0	0	0	3	0	1	1	1	0	0	0	0	0
Baltimore	1	1	0	0	0	0	0	0	0	0	0	0	0	0	0
Carroll	2	0	0	0	0	0	0	0	1	0	0	0	0	1	0
Harford	0	1	0	0	0	0	0	0	0	0	0	0	0	2	0
Howard	1	0	0	0	0	0	0	0	0	1	0	0	0	0	0
<b>Area 2 Total</b>	<b>6</b>	<b>9</b>	<b>0</b>	<b>0</b>	<b>0</b>	<b>3</b>	<b>0</b>	<b>1</b>	<b>2</b>	<b>2</b>	<b>0</b>	<b>0</b>	<b>0</b>	<b>3</b>	<b>0</b>
3. Allegany	0	0	0	0	0	0	0	0	0	0	0	0	0	0	0
Frederick	1	0	0	0	0	2	0	0	1	2	0	0	0	2	0
Garrett	0	0	0	0	0	0	0	0	0	0	0	0	0	0	0
Montgomery	60	34	5	0	2	0	4	24	8	14	1	0	4	8	0
Washington	0	0	4	0	0	0	1	0	0	1	0	0	0	0	0
<b>Area 3 Total</b>	<b>61</b>	<b>34</b>	<b>9</b>	<b>0</b>	<b>2</b>	<b>2</b>	<b>5</b>	<b>24</b>	<b>9</b>	<b>17</b>	<b>1</b>	<b>0</b>	<b>4</b>	<b>10</b>	<b>0</b>
4. Caroline	0	0	0	0	0	0	0	0	0	1	0	0	0	0	0
Cecil	1	0	0	0	2	0	0	1	0	0	0	0	0	0	0
Dorchester	0	0	0	0	0	0	0	0	0	1	0	0	0	0	0
Kent	0	0	0	0	0	0	0	0	1	0	0	0	0	0	0
Queen Anne's	2	1	0	0	0	0	0	0	0	0	0	0	0	0	0
Somerset	0	0	0	0	0	0	0	0	0	0	0	0	0	0	0
Talbot	0	0	0	0	0	0	0	0	0	0	0	0	0	0	0
Wicomico	0	1	0	0	0	0	0	0	0	0	0	0	0	0	0
Worcester	5	2	0	0	1	0	0	0	3	1	0	0	0	1	0
<b>Area 4 Total</b>	<b>8</b>	<b>4</b>	<b>0</b>	<b>0</b>	<b>3</b>	<b>0</b>	<b>0</b>	<b>1</b>	<b>4</b>	<b>3</b>	<b>0</b>	<b>0</b>	<b>0</b>	<b>1</b>	<b>0</b>
5. Calvert	0	1	0	0	2	0	0	0	0	0	0	0	0	0	0
Charles	0	0	0	0	0	0	0	0	0	0	0	0	0	0	0
St.Mary's	0	0	0	0	0	0	0	0	0	0	0	0	0	0	0
Prince George's	6	12	6	0	0	0	4	6	3	4	0	0	1	2	0
<b>Area 5 Total</b>	<b>6</b>	<b>13</b>	<b>6</b>	<b>0</b>	<b>2</b>	<b>0</b>	<b>4</b>	<b>6</b>	<b>3</b>	<b>4</b>	<b>0</b>	<b>0</b>	<b>1</b>	<b>2</b>	<b>0</b>
<b>State Total</b>	<b>81</b>	<b>61</b>	<b>15</b>	<b>0</b>	<b>9</b>	<b>5</b>	<b>9</b>	<b>33</b>	<b>18</b>	<b>26</b>	<b>1</b>	<b>0</b>	<b>5</b>	<b>16</b>	<b>0</b>

Table 25

**Intake Cases by Alleged Offenses and County of Jurisdiction for Hispanic Youth  
FY 1998**

Area	Failure to Obey Law	False Report	Reckless Endangerment	Rogue & Vagabond	Telephone Misuse	Unspecified Felony	Misdemeanors	Juris. Total
1. Baltimore City	0	0	0	1	0	0	0	16
<b>Area 1 Total</b>	<b>0</b>	<b>0</b>	<b>0</b>	<b>1</b>	<b>0</b>	<b>0</b>	<b>0</b>	<b>16</b>
2. Anne Arundel	0	1	0	0	0	0	3	56
Baltimore	0	0	0	1	0	0	0	22
Carroll	0	0	0	0	0	0	0	10
Harford	1	0	0	0	0	0	1	14
Howard	0	0	0	0	0	0	0	5
<b>Area 2 Total</b>	<b>1</b>	<b>1</b>	<b>0</b>	<b>1</b>	<b>0</b>	<b>0</b>	<b>4</b>	<b>107</b>
3. Allegany	0	0	0	0	0	0	0	1
Frederick	0	0	0	0	0	0	2	25
Garrett	0	0	0	0	0	0	0	39
Montgomery	0	2	0	2	0	1	9	428
Washington	0	0	0	0	0	1	1	21
<b>Area 3 Total</b>	<b>0</b>	<b>2</b>	<b>0</b>	<b>2</b>	<b>0</b>	<b>2</b>	<b>12</b>	<b>514</b>
4. Caroline	0	0	0	0	0	0	0	4
Cecil	0	0	0	0	0	0	0	13
Dorchester	0	0	0	0	0	0	0	1
Kent	0	0	0	0	0	0	0	4
Queen Anne's	0	0	0	0	0	0	0	4
Somerset	0	0	0	0	0	0	0	0
Talbot	0	0	0	0	0	0	0	0
Wicomico	0	0	0	0	0	0	0	10
Worcester	0	0	0	0	0	0	0	18
<b>Area 4 Total</b>	<b>0</b>	<b>0</b>	<b>0</b>	<b>0</b>	<b>0</b>	<b>0</b>	<b>0</b>	<b>54</b>
5. Calvert	0	0	0	0	0	0	0	3
Charles	0	0	0	0	0	0	0	6
St.Mary's	0	0	0	0	0	0	0	0
Prince George's	3	0	0	2	0	1	1	172
<b>Area 5 Total</b>	<b>3</b>	<b>0</b>	<b>0</b>	<b>2</b>	<b>0</b>	<b>1</b>	<b>1</b>	<b>181</b>
<b>State Total</b>	<b>4</b>	<b>3</b>	<b>0</b>	<b>6</b>	<b>0</b>	<b>3</b>	<b>17</b>	<b>872</b>

**Table 26**  
**Intake Cases by Alleged Offenses and County of Jurisdiction for Males**  
**FY 1998**

Area	Aggravated Assault	Simple Assault	Robbery	Sex Offense	Murder	Manslaughter	Kidnapping	Child Abuse	Arson Felony/ Misdemeanors	Auto Theft/ Unauthorized Use	Breaking & Entering	Carjacking	Malicious Destruction	Theft/ Shoplifting	Tampering	Trespassing
1. Baltimore City	316	1600	120	137	27	0	0	6	43	830	360	4	431	512	4	326
<b>Area 1 Total</b>	<b>316</b>	<b>1600</b>	<b>120</b>	<b>137</b>	<b>27</b>	<b>0</b>	<b>0</b>	<b>6</b>	<b>43</b>	<b>830</b>	<b>360</b>	<b>4</b>	<b>431</b>	<b>512</b>	<b>4</b>	<b>326</b>
2. Anne Arundel	5	757	46	60	1	0	0	3	20	72	239	0	363	700	14	131
Baltimore	46	1124	198	77	1	1	2	25	52	374	393	4	467	1244	8	181
Carroll	0	200	4	8	0	0	0	0	10	16	40	0	71	132	5	18
Harford	1	209	8	13	0	0	0	0	12	36	61	1	72	201	6	29
Howard	0	287	32	15	0	0	0	0	18	77	59	1	121	234	1	39
<b>Area 2 Total</b>	<b>52</b>	<b>2577</b>	<b>288</b>	<b>173</b>	<b>2</b>	<b>1</b>	<b>2</b>	<b>28</b>	<b>112</b>	<b>575</b>	<b>792</b>	<b>6</b>	<b>1094</b>	<b>2511</b>	<b>34</b>	<b>398</b>
3. Allegany	0	185	0	11	0	0	0	1	0	24	29	0	61	126	6	17
Frederick	0	272	7	18	0	0	1	0	11	31	89	0	135	244	7	27
Garrett	1	34	1	5	0	0	0	0	1	8	14	0	23	18	0	2
Montgomery	2	580	59	58	1	1	3	13	61	169	239	1	212	594	0	64
Washington	4	164	3	23	0	0	0	0	17	23	56	0	58	173	1	10
<b>Area 3 Total</b>	<b>7</b>	<b>1235</b>	<b>70</b>	<b>115</b>	<b>1</b>	<b>1</b>	<b>4</b>	<b>14</b>	<b>90</b>	<b>255</b>	<b>427</b>	<b>1</b>	<b>489</b>	<b>1155</b>	<b>14</b>	<b>120</b>
4. Caroline	0	99	1	7	0	0	0	0	2	9	58	0	61	71	1	2
Cecil	0	183	2	9	1	0	0	0	7	18	39	0	115	148	1	16
Dorchester	1	88	0	5	1	0	0	0	3	5	21	0	22	78	2	6
Kent	0	49	0	0	0	0	0	0	0	11	19	0	30	39	3	5
Queen Anne's	0	56	2	4	0	0	0	0	2	8	20	0	27	25	0	6
Somerset	0	47	1	1	0	0	0	0	2	7	14	0	12	32	0	1
Talbot	0	73	0	7	0	0	0	0	2	21	24	0	41	70	0	3
Wicomico	1	262	5	18	2	0	0	1	12	41	47	1	92	194	4	13
Worcester	4	84	2	6	0	0	0	2	4	17	20	0	76	156	0	9
<b>Area 4 Total</b>	<b>6</b>	<b>941</b>	<b>13</b>	<b>57</b>	<b>4</b>	<b>0</b>	<b>0</b>	<b>3</b>	<b>34</b>	<b>137</b>	<b>262</b>	<b>1</b>	<b>476</b>	<b>813</b>	<b>11</b>	<b>61</b>
5. Calvert	0	108	1	11	0	0	0	1	7	17	44	0	72	97	0	13
Charles	0	251	14	22	0	0	0	6	11	44	80	1	115	250	1	23
St.Mary's	1	107	3	5	2	0	0	1	9	10	55	0	62	92	0	12
Prince George's	10	576	148	68	8	0	1	19	5	363	337	5	211	723	14	208
<b>Area 5 Total</b>	<b>11</b>	<b>1042</b>	<b>166</b>	<b>106</b>	<b>10</b>	<b>0</b>	<b>1</b>	<b>27</b>	<b>32</b>	<b>434</b>	<b>516</b>	<b>6</b>	<b>460</b>	<b>1162</b>	<b>15</b>	<b>256</b>
<b>State Total</b>	<b>392</b>	<b>7395</b>	<b>657</b>	<b>588</b>	<b>44</b>	<b>2</b>	<b>7</b>	<b>78</b>	<b>311</b>	<b>2231</b>	<b>2357</b>	<b>18</b>	<b>2950</b>	<b>6153</b>	<b>78</b>	<b>1161</b>

**Table 26**  
**Intake Cases by Alleged Offenses and County of Jurisdiction for Males**  
**FY 1998**

Area	Alcohol Violation	Narcotics Possession	Narcotics Distribution	Glue Sniffing	Runaway	Truant	Ungovernable	Carrying / Concealing a Weapon	Disorderly Conduct	Motor Vehicle/Traffic Violation	Loitering	Harassment	Pager at School	Tobacco Violation	Handgun Violation
1. Baltimore City	65	1035	1751	4	9	60	93	183	550	63	316	17	1	0	133
<b>Area 1 Total</b>	<b>65</b>	<b>1035</b>	<b>1751</b>	<b>4</b>	<b>9</b>	<b>60</b>	<b>93</b>	<b>183</b>	<b>550</b>	<b>63</b>	<b>316</b>	<b>17</b>	<b>1</b>	<b>0</b>	<b>133</b>
2. Anne Arundel	218	406	86	3	1	31	0	81	77	110	3	11	6	526	8
Baltimore	188	578	128	3	3	2	7	106	112	96	11	33	9	114	29
Carroll	72	84	10	1	25	17	11	21	11	31	0	9	3	28	1
Harford	94	181	37	1	1	2	0	27	14	34	1	1	3	421	2
Howard	167	163	12	0	20	0	1	33	18	53	0	6	3	61	5
<b>Area 2 Total</b>	<b>739</b>	<b>1412</b>	<b>273</b>	<b>8</b>	<b>50</b>	<b>52</b>	<b>19</b>	<b>268</b>	<b>232</b>	<b>324</b>	<b>15</b>	<b>60</b>	<b>24</b>	<b>1150</b>	<b>45</b>
3. Allegany	124	47	11	5	21	5	26	6	21	29	1	3	1	60	1
Frederick	121	116	54	0	31	27	15	19	38	21	0	5	5	191	1
Garrett	16	11	0	0	4	18	9	0	0	5	0	1	0	2	1
Montgomery	452	413	66	0	4	0	30	206	42	106	2	1	20	78	4
Washington	124	61	61	0	1	3	67	29	12	30	0	12	1	23	3
<b>Area 3 Total</b>	<b>837</b>	<b>648</b>	<b>192</b>	<b>5</b>	<b>61</b>	<b>53</b>	<b>147</b>	<b>260</b>	<b>113</b>	<b>191</b>	<b>3</b>	<b>22</b>	<b>27</b>	<b>354</b>	<b>10</b>
4. Caroline	35	26	7	0	17	7	0	5	8	9	0	1	0	7	2
Cecil	71	69	19	2	9	0	1	15	28	30	0	2	3	38	1
Dorchester	20	32	4	0	6	2	0	9	26	14	0	0	0	0	1
Kent	10	35	1	0	3	1	0	3	13	0	0	0	0	28	0
Queen Anne's	57	50	1	0	19	7	2	5	4	8	0	0	0	14	0
Somerset	1	24	8	0	2	0	1	0	2	3	1	0	0	0	0
Talbot	60	29	7	0	23	1	1	5	12	7	0	6	3	24	0
Wicomico	61	74	28	1	30	0	0	12	9	22	0	2	6	19	5
Worcester	293	147	7	0	20	3	2	10	84	23	0	0	0	117	0
<b>Area 4 Total</b>	<b>608</b>	<b>486</b>	<b>82</b>	<b>3</b>	<b>129</b>	<b>21</b>	<b>7</b>	<b>64</b>	<b>186</b>	<b>116</b>	<b>1</b>	<b>11</b>	<b>12</b>	<b>247</b>	<b>9</b>
5. Calvert	61	76	11	0	68	0	0	14	9	14	0	0	1	16	3
Charles	142	100	8	0	4	2	15	28	22	22	0	1	1	11	6
St.Mary's	125	66	11	0	15	0	8	12	9	16	0	2	0	5	1
Prince George's	78	409	182	0	8	5	86	176	115	72	6	5	6	40	32
<b>Area 5 Total</b>	<b>406</b>	<b>651</b>	<b>212</b>	<b>0</b>	<b>95</b>	<b>7</b>	<b>109</b>	<b>230</b>	<b>155</b>	<b>124</b>	<b>6</b>	<b>8</b>	<b>8</b>	<b>72</b>	<b>42</b>
<b>State Total</b>	<b>2655</b>	<b>4232</b>	<b>2510</b>	<b>20</b>	<b>344</b>	<b>193</b>	<b>375</b>	<b>1005</b>	<b>1236</b>	<b>818</b>	<b>341</b>	<b>118</b>	<b>72</b>	<b>1823</b>	<b>239</b>

**Table 26**  
**Intake Cases by Alleged Offenses and County of Jurisdiction for Males**  
**FY 1998**

Area	Failure to Obey Law	False Report	Reckless Endangerment	Rogue & Vagabond	Telephone Misuse	Unspecified Felony	Misdemeanors	Juris. Total
1. Baltimore City	106	26	6	45	1	5	201	9386
<b>Area 1 Total</b>	<b>106</b>	<b>26</b>	<b>6</b>	<b>45</b>	<b>1</b>	<b>5</b>	<b>201</b>	<b>9386</b>
2. Anne Arundel	3	41	20	0	6	12	49	4109
Baltimore	2	18	7	1	33	18	80	5775
Carroll	0	6	2	0	1	8	37	882
Harford	2	4	3	2	4	4	62	1549
Howard	0	7	2	1	5	8	25	1474
<b>Area 2 Total</b>	<b>7</b>	<b>76</b>	<b>34</b>	<b>4</b>	<b>49</b>	<b>50</b>	<b>253</b>	<b>13789</b>
3. Allegany	1	1	0	0	2	9	62	896
Frederick	0	6	4	1	4	6	30	1537
Garrett	0	3	7	0	0	0	8	192
Montgomery	0	5	5	3	17	12	85	3608
Washington	4	2	7	0	4	9	41	1028
<b>Area 3 Total</b>	<b>5</b>	<b>17</b>	<b>23</b>	<b>4</b>	<b>27</b>	<b>36</b>	<b>226</b>	<b>7259</b>
4. Caroline	0	2	4	0	3	0	13	457
Cecil	0	2	6	0	4	6	21	866
Dorchester	1	0	2	0	5	4	7	365
Kent	0	0	0	0	0	4	8	262
Queen Anne's	0	2	1	0	1	0	2	323
Somerset	0	5	0	0	0	0	11	175
Talbot	0	1	1	0	6	3	12	442
Wicomico	0	2	3	0	4	3	22	996
Worcester	4	0	0	0	2	0	45	1137
<b>Area 4 Total</b>	<b>5</b>	<b>14</b>	<b>17</b>	<b>0</b>	<b>25</b>	<b>20</b>	<b>141</b>	<b>5023</b>
5. Calvert	0	3	1	0	2	1	9	660
Charles	3	5	2	4	3	1	10	1208
St.Mary's	0	1	1	2	3	2	2	640
Prince George's	15	5	8	9	3	21	62	4039
<b>Area 5 Total</b>	<b>18</b>	<b>14</b>	<b>12</b>	<b>15</b>	<b>11</b>	<b>25</b>	<b>83</b>	<b>6547</b>
<b>State Total</b>	<b>141</b>	<b>147</b>	<b>92</b>	<b>68</b>	<b>113</b>	<b>136</b>	<b>904</b>	<b>42004</b>

**Table 27**  
**Intake Cases by Alleged Offenses and County of Jurisdiction for Females**  
**FY 1998**

Area	Aggravated Assault	Simple Assault	Robbery	Sex Offense	Murder	Manslaughter	Kidnapping	Child Abuse	Arson Felony	Auto Theft/ Unauthorized Use	Breaking & Entering	Carjacking	Malicious Destruction	Theft / Shoplifting	Tampering	Trespassing
1. Baltimore City	53	778	4	9	7	0	0	3	6	101	56	2	85	149	0	41
<b>Area 1 Total</b>	<b>53</b>	<b>778</b>	<b>4</b>	<b>9</b>	<b>7</b>	<b>0</b>	<b>0</b>	<b>3</b>	<b>6</b>	<b>101</b>	<b>56</b>	<b>2</b>	<b>85</b>	<b>149</b>	<b>0</b>	<b>41</b>
2. Anne Arundel	0	361	2	2	0	0	0	0	6	30	32	0	85	346	0	25
Baltimore	14	647	15	4	0	0	0	2	5	51	39	1	85	801	0	37
Carroll	0	58	0	0	0	0	0	0	0	12	3	0	18	48	0	0
Harford	1	92	0	0	0	0	0	0	2	15	7	0	23	85	2	10
Howard	0	116	1	0	0	0	0	0	3	12	19	0	15	106	0	10
<b>Area 2 Total</b>	<b>15</b>	<b>1274</b>	<b>18</b>	<b>6</b>	<b>0</b>	<b>0</b>	<b>0</b>	<b>2</b>	<b>16</b>	<b>120</b>	<b>100</b>	<b>1</b>	<b>226</b>	<b>1386</b>	<b>2</b>	<b>82</b>
3. Allegany	1	112	0	0	0	0	0	0	0	5	3	0	14	60	0	7
Frederick	1	82	2	0	0	0	0	0	1	14	20	0	15	122	1	2
Garrett	0	8	0	0	0	0	0	0	1	5	3	0	7	7	0	3
Montgomery	0	243	6	7	1	0	0	1	7	28	44	0	42	317	0	17
Washington	0	86	1	1	0	0	1	0	3	15	12	0	18	83	0	1
<b>Area 3 Total</b>	<b>2</b>	<b>531</b>	<b>9</b>	<b>8</b>	<b>1</b>	<b>0</b>	<b>1</b>	<b>1</b>	<b>12</b>	<b>67</b>	<b>82</b>	<b>0</b>	<b>96</b>	<b>589</b>	<b>1</b>	<b>30</b>
4. Caroline	0	36	0	1	0	0	0	0	0	2	2	0	12	14	0	0
Cecil	0	80	3	0	0	0	0	0	3	4	3	0	12	47	0	2
Dorchester	1	61	2	0	0	0	0	0	0	3	8	0	7	19	0	0
Kent	0	32	0	0	0	0	0	0	0	0	5	0	4	17	0	0
Queen Anne's	1	16	0	0	0	0	0	0	0	1	0	0	1	13	0	0
Somerset	0	19	0	0	0	0	0	0	0	2	0	0	4	4	0	0
Talbot	0	44	0	1	0	0	0	0	0	2	1	0	3	38	0	1
Wicomico	0	169	0	0	0	0	0	0	0	6	12	0	5	69	0	1
Worcester	0	52	0	3	0	0	0	0	0	7	7	0	3	59	1	0
<b>Area 4 Total</b>	<b>2</b>	<b>509</b>	<b>5</b>	<b>5</b>	<b>0</b>	<b>0</b>	<b>0</b>	<b>0</b>	<b>3</b>	<b>27</b>	<b>38</b>	<b>0</b>	<b>51</b>	<b>280</b>	<b>1</b>	<b>4</b>
5. Calvert	0	30	0	0	0	0	0	0	0	5	6	0	9	25	0	5
Charles	0	103	0	0	1	0	0	0	2	13	11	0	19	162	1	3
St.Mary's	0	68	0	0	0	0	0	0	0	4	10	0	7	43	0	0
Prince George's	4	211	9	1	0	0	0	4	0	68	43	1	21	302	0	24
<b>Area 5 Total</b>	<b>4</b>	<b>412</b>	<b>9</b>	<b>1</b>	<b>1</b>	<b>0</b>	<b>0</b>	<b>4</b>	<b>2</b>	<b>90</b>	<b>70</b>	<b>1</b>	<b>56</b>	<b>532</b>	<b>1</b>	<b>32</b>
<b>State Total</b>	<b>76</b>	<b>3504</b>	<b>45</b>	<b>29</b>	<b>9</b>	<b>0</b>	<b>1</b>	<b>10</b>	<b>39</b>	<b>405</b>	<b>346</b>	<b>4</b>	<b>514</b>	<b>2936</b>	<b>5</b>	<b>189</b>

**Table 27**  
**Intake Cases by Alleged Offenses and County of Jurisdiction for Females**  
**FY 1998**

Area	Alcohol Violation	Narcotics Possession	Narcotics Distribution	Glue Sniffing	Runaway	Truant	Ungovernable	Carrying / Concealing a Weapon	Disorderly Conduct	Motor Vehicle/Traffic Violation	Loitering	Harassment	Pager at School	Tobacco Violation	Handgun Violation
1. Baltimore City	6	59	98	4	0	57	116	57	225	6	14	12	0	0	16
<b>Area 1 Total</b>	<b>6</b>	<b>59</b>	<b>98</b>	<b>4</b>	<b>0</b>	<b>57</b>	<b>116</b>	<b>57</b>	<b>225</b>	<b>6</b>	<b>14</b>	<b>12</b>	<b>0</b>	<b>0</b>	<b>16</b>
2. Anne Arundel	133	110	10	1	0	34	5	9	25	24	0	11	1	316	2
Baltimore	88	102	16	1	1	4	18	9	66	21	5	29	1	44	3
Carroll	20	32	2	0	37	14	16	1	7	4	0	5	0	2	0
Harford	44	23	2	0	1	0	1	3	5	8	0	1	2	199	0
Howard	106	28	5	0	15	0	1	3	3	9	1	6	4	18	0
<b>Area 2 Total</b>	<b>391</b>	<b>295</b>	<b>35</b>	<b>2</b>	<b>54</b>	<b>52</b>	<b>41</b>	<b>25</b>	<b>106</b>	<b>66</b>	<b>6</b>	<b>52</b>	<b>8</b>	<b>579</b>	<b>5</b>
3. Allegany	98	12	2	4	33	2	22	0	5	6	0	2	0	38	0
Frederick	44	25	6	0	47	19	19	1	12	10	0	0	1	52	0
Garrett	9	4	0	0	7	9	10	0	1	1	0	2	0	0	0
Montgomery	240	66	7	0	5	0	28	28	16	29	0	2	3	24	1
Washington	36	21	12	0	3	5	78	1	4	16	0	9	0	3	0
<b>Area 3 Total</b>	<b>427</b>	<b>128</b>	<b>27</b>	<b>4</b>	<b>95</b>	<b>35</b>	<b>157</b>	<b>30</b>	<b>38</b>	<b>62</b>	<b>0</b>	<b>15</b>	<b>4</b>	<b>117</b>	<b>1</b>
4. Caroline	19	5	0	0	28	3	3	1	7	1	0	3	0	1	0
Cecil	30	12	1	0	24	0	1	5	5	11	0	5	0	21	0
Dorchester	5	17	0	0	32	0	0	1	14	2	0	2	1	0	0
Kent	4	4	0	0	11	0	0	0	14	0	0	0	0	14	0
Queen Anne's	11	10	1	0	29	0	1	0	3	1	0	0	0	1	0
Somerset	1	4	0	0	6	0	0	0	1	1	0	0	0	0	0
Talbot	35	6	1	0	15	0	0	0	5	3	0	0	1	5	2
Wicomico	32	10	1	0	28	0	0	0	9	3	0	3	6	12	0
Worcester	155	31	1	0	82	4	0	1	15	8	0	0	0	41	1
<b>Area 4 Total</b>	<b>292</b>	<b>99</b>	<b>5</b>	<b>0</b>	<b>255</b>	<b>7</b>	<b>5</b>	<b>8</b>	<b>73</b>	<b>30</b>	<b>0</b>	<b>13</b>	<b>8</b>	<b>95</b>	<b>3</b>
5. Calvert	23	14	2	0	103	0	1	4	10	2	0	1	0	3	0
Charles	65	12	3	0	4	0	9	1	2	5	0	0	1	2	0
St.Mary's	51	12	0	0	30	0	11	1	14	7	0	4	0	0	0
Prince George's	22	51	9	0	8	2	84	38	37	15	0	8	2	7	2
<b>Area 5 Total</b>	<b>161</b>	<b>89</b>	<b>14</b>	<b>0</b>	<b>145</b>	<b>2</b>	<b>105</b>	<b>44</b>	<b>63</b>	<b>29</b>	<b>0</b>	<b>13</b>	<b>3</b>	<b>12</b>	<b>2</b>
<b>State Total</b>	<b>1277</b>	<b>670</b>	<b>179</b>	<b>10</b>	<b>549</b>	<b>153</b>	<b>424</b>	<b>164</b>	<b>505</b>	<b>193</b>	<b>20</b>	<b>105</b>	<b>23</b>	<b>803</b>	<b>27</b>



Table 27

**Intake Cases by Alleged Offenses and County of Jurisdiction for Females  
FY 1998**

Area	Failure to Obey Law	False Report	Reckless Endangerment	Rogue & Vagabond	Telephone Misuse	Unspecified Felony	Misdemeanors	Juris. Total
1. Baltimore City	39	7	2	6	2	1	21	2042
<b>Area 1 Total</b>	<b>39</b>	<b>7</b>	<b>2</b>	<b>6</b>	<b>2</b>	<b>1</b>	<b>21</b>	<b>2042</b>
2. Anne Arundel	0	35	2	0	6	4	4	1621
Baltimore	1	6	0	0	22	5	16	2159
Carroll	0	3	0	0	4	5	10	301
Harford	0	1	0	0	3	0	16	546
Howard	0	2	2	0	6	1	15	507
<b>Area 2 Total</b>	<b>1</b>	<b>47</b>	<b>4</b>	<b>0</b>	<b>41</b>	<b>15</b>	<b>61</b>	<b>5134</b>
3. Allegany	0	5	0	0	2	0	14	447
Frederick	0	5	0	0	6	4	11	522
Garrett	0	0	0	0	0	0	2	79
Montgomery	0	10	1	0	10	6	40	1229
Washington	0	3	2	0	2	4	4	424
<b>Area 3 Total</b>	<b>0</b>	<b>23</b>	<b>3</b>	<b>0</b>	<b>20</b>	<b>14</b>	<b>71</b>	<b>2701</b>
4. Caroline	0	7	0	0	5	0	5	155
Cecil	0	3	0	0	1	0	6	279
Dorchester	0	0	0	0	0	1	1	177
Kent	0	0	1	0	0	0	0	106
Queen Anne's	0	0	0	0	1	0	1	91
Somerset	0	2	0	0	0	1	1	46
Talbot	0	0	1	0	1	0	4	169
Wicomico	0	2	2	0	1	0	2	373
Worcester	2	1	0	0	0	0	13	487
<b>Area 4 Total</b>	<b>2</b>	<b>15</b>	<b>4</b>	<b>0</b>	<b>9</b>	<b>2</b>	<b>33</b>	<b>1883</b>
5. Calvert	0	0	0	0	3	0	4	250
Charles	1	3	0	0	2	4	0	429
St.Mary's	0	5	0	0	1	1	2	271
Prince George's	9	0	3	1	3	9	20	1018
<b>Area 5 Total</b>	<b>10</b>	<b>8</b>	<b>3</b>	<b>1</b>	<b>9</b>	<b>14</b>	<b>26</b>	<b>1968</b>
<b>State Total</b>	<b>52</b>	<b>100</b>	<b>16</b>	<b>7</b>	<b>81</b>	<b>46</b>	<b>212</b>	<b>13728</b>

**Table 28**  
**Alleged Offense Rates Per 1,000 Population by Offense Category & County of Residence**  
**FY 1998**

Area	11 - 17 Yrs. Population	Person - to - Person	Per 1,000 Population	Property	Per 1,000 Population	Alcohol	Per 1,000 Population	Narcotics	Per 1,000 Population	CINS	Per 1,000 Population	Other	Per 1,000 Population	County of Residence Total	County of Residence Per 1,000 Population
1. Baltimore City	59527	3072	51.6	4126	69.3	128	2.2	2905	48.8	331	5.6	2238	37.6	12800	215.0
<b>Area 1 Total</b>	<b>59527</b>	<b>3072</b>	<b>51.6</b>	<b>4126</b>	<b>69.3</b>	<b>128</b>	<b>2.2</b>	<b>2905</b>	<b>48.8</b>	<b>331</b>	<b>5.6</b>	<b>2238</b>	<b>37.6</b>	<b>12800</b>	<b>215.0</b>
2. Anne Arundel	44855	1294	28.8	1905	42.5	399	8.9	632	14.1	91	2.0	1253	27.9	5574	124.3
Baltimore	68088	2055	30.2	2714	39.9	299	4.4	858	12.6	65	1.0	930	13.7	6921	101.6
Carroll	14733	308	20.9	385	26.1	105	7.1	138	9.4	106	7.2	147	10.0	1189	80.7
Harford	21417	402	18.8	589	27.5	154	7.2	263	12.3	6	0.3	721	33.7	2135	99.7
Howard	23300	447	19.2	597	25.6	173	7.4	173	7.4	33	1.4	228	9.8	1651	70.9
<b>Area 2 Total</b>	<b>172393</b>	<b>4506</b>	<b>26.1</b>	<b>6190</b>	<b>35.9</b>	<b>1130</b>	<b>6.6</b>	<b>2064</b>	<b>12.0</b>	<b>301</b>	<b>1.7</b>	<b>3279</b>	<b>19.0</b>	<b>17470</b>	<b>101.3</b>
3. Allegany	6533	379	58.0	317	48.5	186	28.5	82	12.6	101	15.5	178	27.2	1243	190.3
Frederick	19396	404	20.8	671	34.6	188	9.7	177	9.1	153	7.9	381	19.6	1974	101.8
Garrett	2643	45	17.0	79	29.9	16	6.1	12	4.5	53	20.1	20	7.6	225	85.1
Montgomery	77921	1064	13.7	1576	20.2	636	8.2	515	6.6	66	0.8	602	7.7	4459	57.2
Washington	11608	310	26.7	426	36.7	136	11.7	123	10.6	157	13.5	181	15.6	1333	114.8
<b>Area 3 Total</b>	<b>118101</b>	<b>2202</b>	<b>18.6</b>	<b>3069</b>	<b>26.0</b>	<b>1162</b>	<b>9.8</b>	<b>909</b>	<b>7.7</b>	<b>530</b>	<b>4.5</b>	<b>1362</b>	<b>11.5</b>	<b>9234</b>	<b>78.2</b>
4. Caroline	2990	163	54.5	226	75.6	63	21.1	41	13.7	57	19.1	71	23.7	621	207.7
Cecil	8390	300	35.8	397	47.3	84	10.0	105	12.5	34	4.1	176	21.0	1096	130.6
Dorchester	2698	154	57.1	179	66.3	36	13.3	38	14.1	35	13.0	88	32.6	530	196.4
Kent	1591	58	36.5	116	72.9	13	8.2	33	20.7	15	9.4	50	31.4	285	179.1
Queen Anne's	3512	83	23.6	113	32.2	59	16.8	46	13.1	50	14.2	76	21.6	427	121.6
Somerset	1722	91	52.8	83	48.2	4	2.3	34	19.7	9	5.2	18	10.5	239	138.8
Talbot	2890	125	43.3	187	76.0	65	42.0	34	35.0	33	70.0	76	26.3	520	179.9
Wicomico	7589	474	62.5	449	59.2	101	13.3	112	14.8	55	7.2	140	18.4	1331	175.4
Worcester	3876	138	35.6	210	54.2	52	13.4	47	12.1	66	17.0	115	29.7	628	162.0
<b>Area 4 Total</b>	<b>35258</b>	<b>1586</b>	<b>45.0</b>	<b>1960</b>	<b>55.6</b>	<b>477</b>	<b>13.5</b>	<b>490</b>	<b>13.9</b>	<b>354</b>	<b>10.0</b>	<b>810</b>	<b>23.0</b>	<b>5677</b>	<b>161.0</b>
5. Calvert	8233	160	19.4	295	35.8	99	12.0	96	11.7	149	18.1	89	10.8	888	107.9
Charles	12744	420	33.0	706	55.4	211	16.6	132	10.4	50	3.9	140	11.0	1659	130.2
St.Mary's	8816	183	20.8	316	35.8	145	16.4	92	10.4	65	7.4	88	10.0	889	100.8
Prince George's	72012	1078	15.0	2167	30.1	127	1.8	599	8.3	180	2.5	660	9.2	4811	66.8
<b>Area 5 Total</b>	<b>101805</b>	<b>1841</b>	<b>18.1</b>	<b>3484</b>	<b>34.2</b>	<b>582</b>	<b>5.7</b>	<b>919</b>	<b>9.0</b>	<b>444</b>	<b>4.4</b>	<b>977</b>	<b>9.6</b>	<b>8247</b>	<b>81.0</b>
<b>State Total</b>	<b>487084</b>	<b>13207</b>	<b>27.1</b>	<b>18829</b>	<b>38.7</b>	<b>3479</b>	<b>7.1</b>	<b>7287</b>	<b>15.0</b>	<b>1960</b>	<b>4.0</b>	<b>8666</b>	<b>17.8</b>	<b>53428</b>	<b>109.7</b>

Note: 1. FY 1998 11 - 17 Year old Population Projections are taken from "Public School Enrollment Projections 1998 - 2007" report prepared by Maryland Office of State Planning.

2. Total did not add up to 55,732 because 1889 were Out-of- State cases and 415 were County Unknown Cases.

**Table 29**  
**Alleged Offense Rates Per 1,000 Population by Offense Category & County of Offense**  
**FY 1998**

Area	11 - 17 Yrs. Population	Person - to - Person	Per 1,000 Population	Property	Per 1,000 Population	Alcohol	Per 1,000 Population	Narcotics	Per 1,000 Population	CINS	Per 1,000 Population	Other	Per 1,000 Population	County of Offense Total	County of Offense Per 1,000 Population
1. Baltimore City	59527	2900	48.7	2941	49.4	71	1.2	2947	49.5	335	5.6	2205	37.0	11399	191.5
<b>Area 1 Total</b>	<b>59527</b>	<b>2900</b>	<b>48.7</b>	<b>2941</b>	<b>49.4</b>	<b>71</b>	<b>1.2</b>	<b>2947</b>	<b>49.5</b>	<b>335</b>	<b>5.6</b>	<b>2205</b>	<b>37.0</b>	<b>11399</b>	<b>191.5</b>
2. Anne Arundel	44855	1285	28.6	2056	45.8	299	6.7	615	13.7	71	1.6	1339	29.9	5665	126.3
Baltimore	68088	2185	32.1	3737	54.9	232	3.4	830	12.2	35	0.5	856	12.6	7875	115.7
Carroll	14733	317	21.5	371	25.2	92	6.2	128	8.7	121	8.2	152	10.3	1181	80.2
Harford	21417	400	18.7	566	26.4	139	6.5	241	11.3	4	0.2	749	35.0	2099	98.0
Howard	23300	485	20.8	709	30.4	268	11.5	207	8.9	37	1.6	252	10.8	1958	84.0
<b>Area 2 Total</b>	<b>172393</b>	<b>4672</b>	<b>27.1</b>	<b>7439</b>	<b>43.2</b>	<b>1030</b>	<b>6.0</b>	<b>2021</b>	<b>11.7</b>	<b>268</b>	<b>1.6</b>	<b>3348</b>	<b>19.4</b>	<b>18778</b>	<b>108.9</b>
3. Allegany	6533	390	59.7	346	53.0	219	33.5	80	12.2	109	16.7	194	29.7	1338	204.8
Frederick	19396	420	21.7	714	36.8	160	8.2	200	10.3	158	8.1	391	20.2	2043	105.3
Garrett	2643	58	21.9	95	35.9	25	9.5	15	5.7	57	21.6	24	9.1	274	103.7
Montgomery	77921	1089	14.0	1780	22.8	689	8.8	543	7.0	65	0.8	627	8.0	4793	61.5
Washington	11608	321	27.7	466	40.1	160	13.8	154	13.3	157	13.5	182	15.7	1440	124.1
<b>Area 3 Total</b>	<b>118101</b>	<b>2278</b>	<b>19.3</b>	<b>3401</b>	<b>28.8</b>	<b>1253</b>	<b>10.6</b>	<b>992</b>	<b>8.4</b>	<b>546</b>	<b>4.6</b>	<b>1418</b>	<b>12.0</b>	<b>9888</b>	<b>83.7</b>
4. Caroline	2990	162	54.2	232	77.6	54	18.1	38	12.7	58	19.4	65	21.7	609	203.7
Cecil	8390	301	35.9	403	48.0	98	11.7	101	12.0	35	4.2	180	21.5	1118	133.3
Dorchester	2698	163	60.4	174	64.5	25	9.3	54	20.0	40	14.8	85	31.5	541	200.5
Kent	1591	89	55.9	133	83.6	14	8.8	41	25.8	15	9.4	77	48.4	369	231.9
Queen Anne's	3512	80	22.8	102	29.0	68	19.4	62	17.7	58	16.5	42	12.0	412	117.3
Somerset	1722	76	44.1	78	45.3	2	1.2	36	20.9	9	5.2	16	9.3	217	126.0
Talbot	2890	141	48.8	206	76.0	95	42.0	43	35.0	40	70.0	85	29.4	610	211.1
Wicomico	7589	479	63.1	493	65.0	94	12.4	113	14.9	58	7.6	124	16.3	1361	179.3
Worcester	3876	204	52.6	355	91.6	566	146.0	185	47.7	111	28.6	323	83.3	1744	449.9
<b>Area 4 Total</b>	<b>35258</b>	<b>1695</b>	<b>48.1</b>	<b>2176</b>	<b>61.7</b>	<b>1016</b>	<b>28.8</b>	<b>673</b>	<b>19.1</b>	<b>424</b>	<b>12.0</b>	<b>997</b>	<b>28.3</b>	<b>6981</b>	<b>198.0</b>
5. Calvert	8233	162	19.7	300	36.4	81	9.8	103	12.5	172	20.9	87	10.6	905	109.9
Charles	12744	406	31.9	731	57.4	207	16.2	122	9.6	34	2.7	129	10.1	1629	127.8
St.Mary's	8816	187	21.2	304	34.5	174	19.7	88	10.0	64	7.3	87	9.9	904	102.5
Prince George's	72012	1088	15.1	2280	31.7	98	1.4	640	8.9	190	2.6	634	8.8	4930	68.5
<b>Area 5 Total</b>	<b>101805</b>	<b>1843</b>	<b>18.1</b>	<b>3615</b>	<b>35.5</b>	<b>560</b>	<b>5.5</b>	<b>953</b>	<b>9.4</b>	<b>460</b>	<b>4.5</b>	<b>937</b>	<b>9.2</b>	<b>8368</b>	<b>82.2</b>
<b>State Total</b>	<b>487084</b>	<b>13388</b>	<b>27.5</b>	<b>19572</b>	<b>40.2</b>	<b>3930</b>	<b>8.1</b>	<b>7586</b>	<b>15.6</b>	<b>2033</b>	<b>4.2</b>	<b>8905</b>	<b>18.3</b>	<b>55414</b>	<b>113.8</b>

**Note:** 1. FY 1998 11 - 17 Year old Population Projections are taken from "Public Enrollment Projections 1998 - 2007" report prepared by Maryland Office of State Planning.

2. Total did not add up to 55,732 because 318 were Out-of-State Cases.

**Table 30**  
**Rates of Total and Delinquent Referrals per 1,000 Youth Population**  
**Ages 11 - 17 Years by County of Residence**  
**FY 1998**

County of Residence	1998 11 - 17 Yrs. Population	Total Referrals	Per 1,000 pop.	Delinquent Referrals	Per 1,000 pop.
1. Baltimore City	59527	12800	215.0	12295	206.5
<b>Area 1 Total</b>	<b>59527</b>	<b>12800</b>	<b>215.0</b>	<b>12295</b>	<b>206.5</b>
2. Anne Arundel	44855	5574	124.3	4350	97.0
Baltimore	68088	6921	101.6	6343	93.2
Carroll	14733	1189	80.7	950	64.5
Harford	21417	2135	99.7	1381	64.5
Howard	23300	1651	70.9	1370	58.8
<b>Area 2 Total</b>	<b>172393</b>	<b>17470</b>	<b>101.3</b>	<b>14394</b>	<b>83.5</b>
3. Allegany	6533	1243	190.3	862	131.9
Frederick	19396	1974	101.8	1400	72.2
Garrett	2643	225	85.1	154	58.3
Montgomery	77921	4459	57.2	3655	46.9
Washington	11608	1333	114.8	1008	86.8
<b>Area 3 Total</b>	<b>118101</b>	<b>9234</b>	<b>78.2</b>	<b>7079</b>	<b>59.9</b>
4. Caroline	2990	621	207.7	487	162.9
Cecil	8390	1096	130.6	922	109.9
Dorchester	2698	530	196.4	459	170.1
Kent	1591	285	179.1	240	150.8
Queen Anne's	3512	427	121.6	270	76.9
Somerset	1722	239	138.8	223	129.5
Talbot	2890	520	179.9	395	136.7
Wicomico	7589	1331	175.4	1141	150.3
Worcester	3876	628	162.0	440	113.5
<b>Area 4 Total</b>	<b>35258</b>	<b>5677</b>	<b>161.0</b>	<b>4577</b>	<b>129.8</b>
5. Calvert	8233	888	107.9	619	75.2
Charles	12744	1659	130.2	1381	108.4
St. Mary's	8816	889	100.8	673	76.3
Prince George's	72012	4811	66.8	4438	61.6
<b>Area 5 Total</b>	<b>101805</b>	<b>8247</b>	<b>81.0</b>	<b>7111</b>	<b>69.8</b>
<b>State Total</b>	<b>487084</b>	<b>53428</b>	<b>109.7</b>	<b>45456</b>	<b>93.3</b>

**Note: FY 1998 11-17 Year old Population Projections are taken from "Public School Enrollment Projections 1998 - 2007" report prepared by Maryland Office of State Planning.**

**Table 31**  
**Court Dispositions of Formalized Cases by Gender**  
**FY 1998**

<b>Court Dispositions by Gender</b>	<b>Males</b>	<b>Percent Total</b>	<b>Females</b>	<b>Percent Total</b>	<b>Juris. Total</b>	<b>Percent Total</b>
Probation/prob. to parent/ protective supervision	4924	28.5	998	30.1	5922	28.7
Dismissed/Closed	3120	18.0	547	16.5	3667	17.8
Committed to DJJ for placement	2057	11.9	159	4.8	2216	10.7
Continued case/STET	2595	15.0	716	21.6	3311	16.1
Petition denied by State Attorney	2584	14.9	524	15.8	3108	15.1
Petition Withdrawn	37	0.2	4	0.1	41	0.2
Jurisdiction Waived	393	2.3	21	0.6	414	2.0
Inter-Region/State	112	0.6	17	0.5	129	0.6
Nol Pros	319	1.8	66	2.0	385	1.9
Transfer from one jurisdiction to another	136	0.8	28	0.8	164	0.8
Writ Pending	350	2.0	88	2.6	438	2.1
Others	193	1.1	22	0.7	215	1.0
Disposition Pending	486	2.8	131	3.9	617	3.0
<b>State Total</b>	<b>17306</b>	<b>100.0</b>	<b>3321</b>	<b>100.0</b>	<b>20627</b>	<b>100.0</b>

**Table 32**  
**Court Disposition of Formalized Cases by Race**  
**FY 1998**

<b>Court Dispositions by Race</b>	<b>African - American</b>	<b>Percent Total</b>	<b>Caucasian</b>	<b>Percent Total</b>	<b>Hispanic</b>	<b>Percent Total</b>	<b>Other</b>	<b>Percent Total</b>	<b>Juris. Total</b>
Probation/prob. to parent/ protective supervision	3167	25.1	2565	34.3	111	35.6	79	32.5	5922
Dismissed/Closed	2380	18.9	1187	15.9	58	18.6	42	17.3	3667
Committed to DJJ for placement	1466	11.6	696	9.3	26	8.3	28	11.5	2216
Continued case/STET	1954	15.5	1290	17.3	35	11.2	32	13.2	3311
Petition denied by State Attorney	2167	17.2	921	12.3	26	8.3	35	14.4	3149
Jurisdiction Waived	283	2.2	117	1.6	8	2.6	6	2.5	414
Inter-Region/State	65	0.5	53	0.7	5	1.6	6	2.5	129
Nol Pros	195	1.5	183	2.4	4	1.3	3	1.2	385
Transfer from one jurisdiction to another	82	0.7	73	1.0	8	2.6	1	0.4	164
Writ Pending	342	2.7	77	1.0	16	5.1	3	1.2	438
Others	144	1.1	65	0.9	4	1.3	2	0.8	215
Disposition Pending	356	2.8	244	3.3	11	3.5	6	2.5	617
<b>State Total</b>	<b>12601</b>	<b>100.0</b>	<b>7471</b>	<b>100.0</b>	<b>312</b>	<b>100.0</b>	<b>243</b>	<b>100.0</b>	<b>20627</b>