



Maryland

JUVENILE SERVICES
EDUCATION PROGRAM

Reset, Refocus and Build

2024-2025 School Year





Maryland

JUVENILE SERVICES
EDUCATION PROGRAM

September 2024

Sunday	Monday	Tuesday	Wednesday	Thursday	Friday	Saturday
1	2	3	4	5	6	7
	LABOR DAY State Holiday	School-Based PD School closed to students	Quarter 1 Begins			
8	9	10	11	12	13	14
	Monthly Reports & Indicator 13				Summer Compliance Monitoring Due Transcripts & Report Cards Mailed	
15	16	17	18	19	20	21
22	23	24	25	26	27	28
29	30					





Maryland

JUVENILE SERVICES
EDUCATION PROGRAM

October 2024

Sunday	Monday	Tuesday	Wednesday	Thursday	Friday	Saturday
		1	2	3	4	5
6	7	8	9	10	11	12
	Monthly Reports & Indicator 13 Due		Quarter 1 Progress Reports Grades Due		Quarter 1 Progress Reports Mailed	
13	14	15	16	17	18	19
	COLUMBUS DAY State Holiday					
20	21	22	23	24	25	26
			No New Academic Enrollment			
27	28	29	30	31		





Maryland

JUVENILE SERVICES
EDUCATION PROGRAM

November 2024

Sunday	Monday	Tuesday	Wednesday	Thursday	Friday	Saturday
					1	2
					No New Academic withdrawals	
3	4	5	6	7	8	9
	School- Based PD School Psychologist Week School closed to students	ELECTION DAY State Holiday		Monthly Report & Indicator 13 Due	Last day of Quarter 1 (45 Days)	
10	11	12	13	14	15	16
	VETERANS DAY State Holiday	School-Based PD Quarter 1 Report Card Grades Stored @ Noon School closed to students	Systemwide PD School closed to students	2nd Quarter Begins Quarter 1 report card mailed		
17	18	19	20	21	22	23
24	25	26	27	28	29	30
	Quarter 1 Compliance Monitoring Due		½ day for Students	THANKSGIVING DAY State Holiday	AMERICAN INDIAN HERITAGE DAY State Holiday	

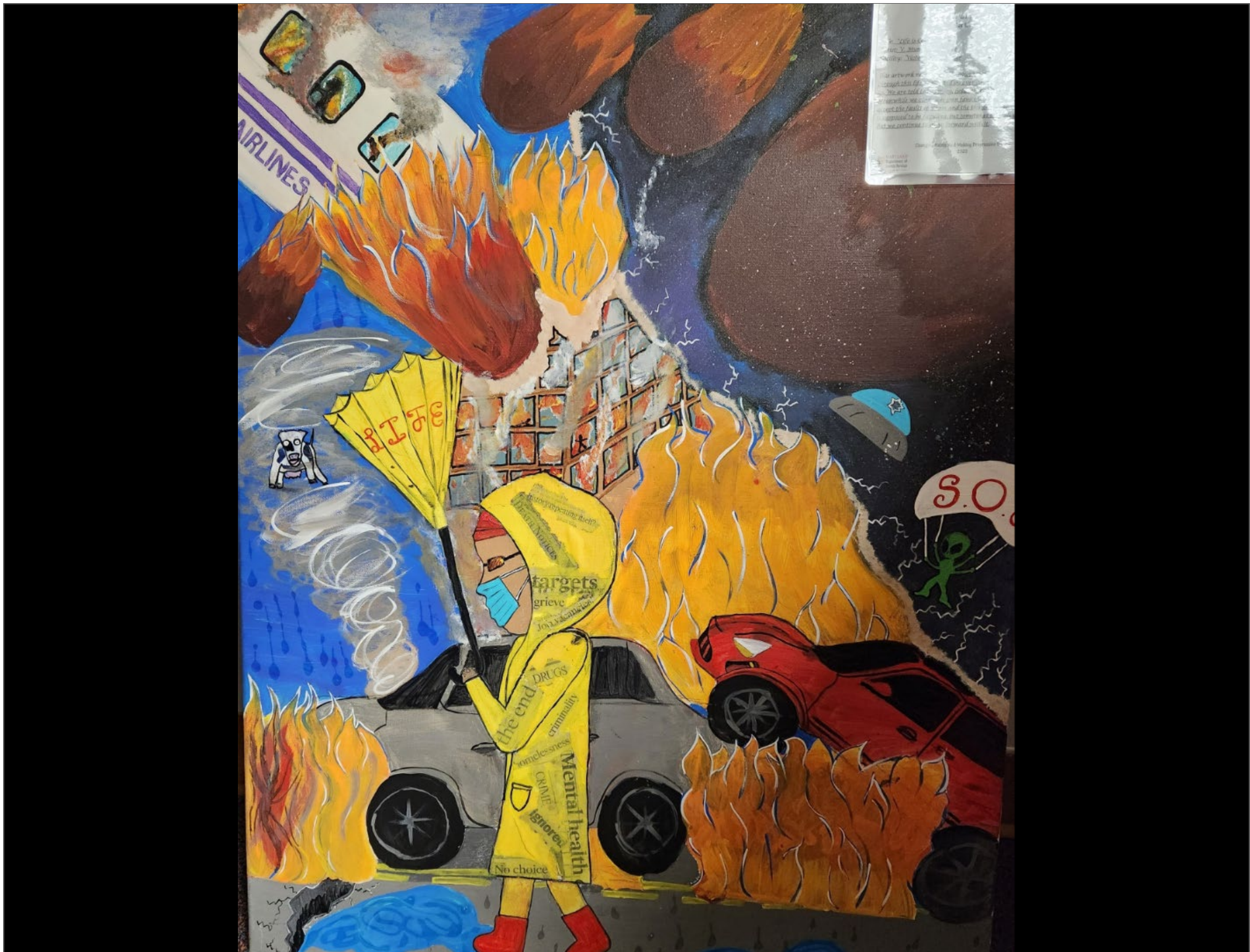


Maryland

JUVENILE SERVICES
EDUCATION PROGRAM

December 2024

Sunday	Monday	Tuesday	Wednesday	Thursday	Friday	Saturday
1	2	3	4	5	6	7
			MCAP Winter Testing Begins		Monthly Report & Indicator 13 Due	
8	9	10	11	12	13	14
15	16	17	18	19	20	21
			Quarter 2 Progress Report Grades Due		Quarter 2 Progress Reports Mailed	
22	23	24	25	26	27	28
		½ day for students	CHRISTMAS DAY State Holiday	School-Based PD School closed to students	School-Based PD School closed to students	
29	30	31				
	School- Based PD School closed to students	School- Based PD School closed to students				



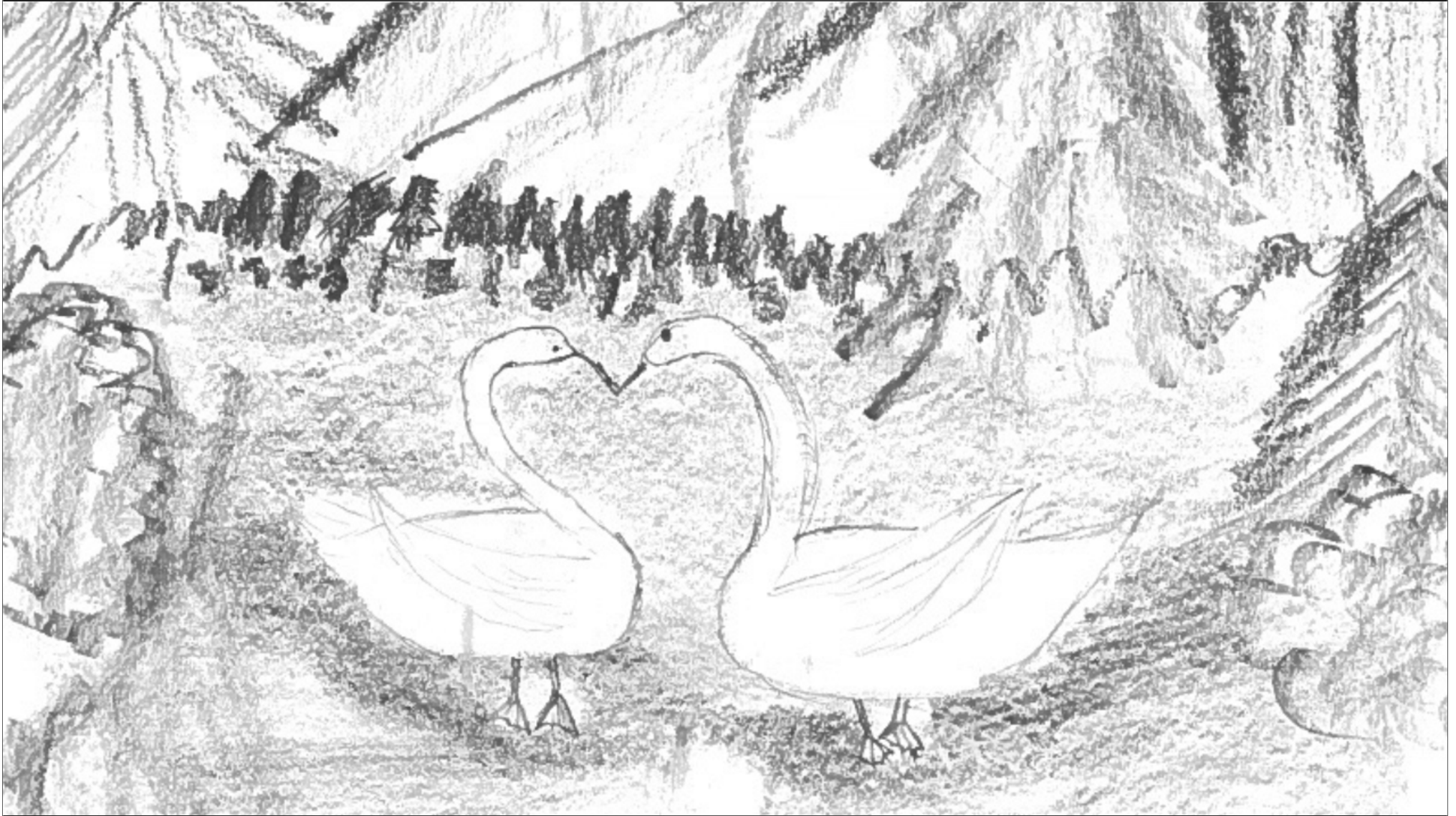


Maryland

JUVENILE SERVICES
EDUCATION PROGRAM

January 2025

Sunday	Monday	Tuesday	Wednesday	Thursday	Friday	Saturday
			1	2	3	4
			NEW YEAR'S DAY State Holiday	No New Academic Enrollments		
5	6	7	8	9	10	11
		Monthly Report & Indicator 13 Due	ACCESS for ELLs Begins			
12	13	14	15	16	17	18
19	20	21	22	23	24	25
	MLK Day State Holiday		MCAP Winter Testing Ends	No New Academic Withdrawal		
26	27	28	29	30	31	
				Last day of Quarter 2 (47 days)	School-Based PD Quarter 2 Report Card Grades Stored @ Noon School Closed to students	



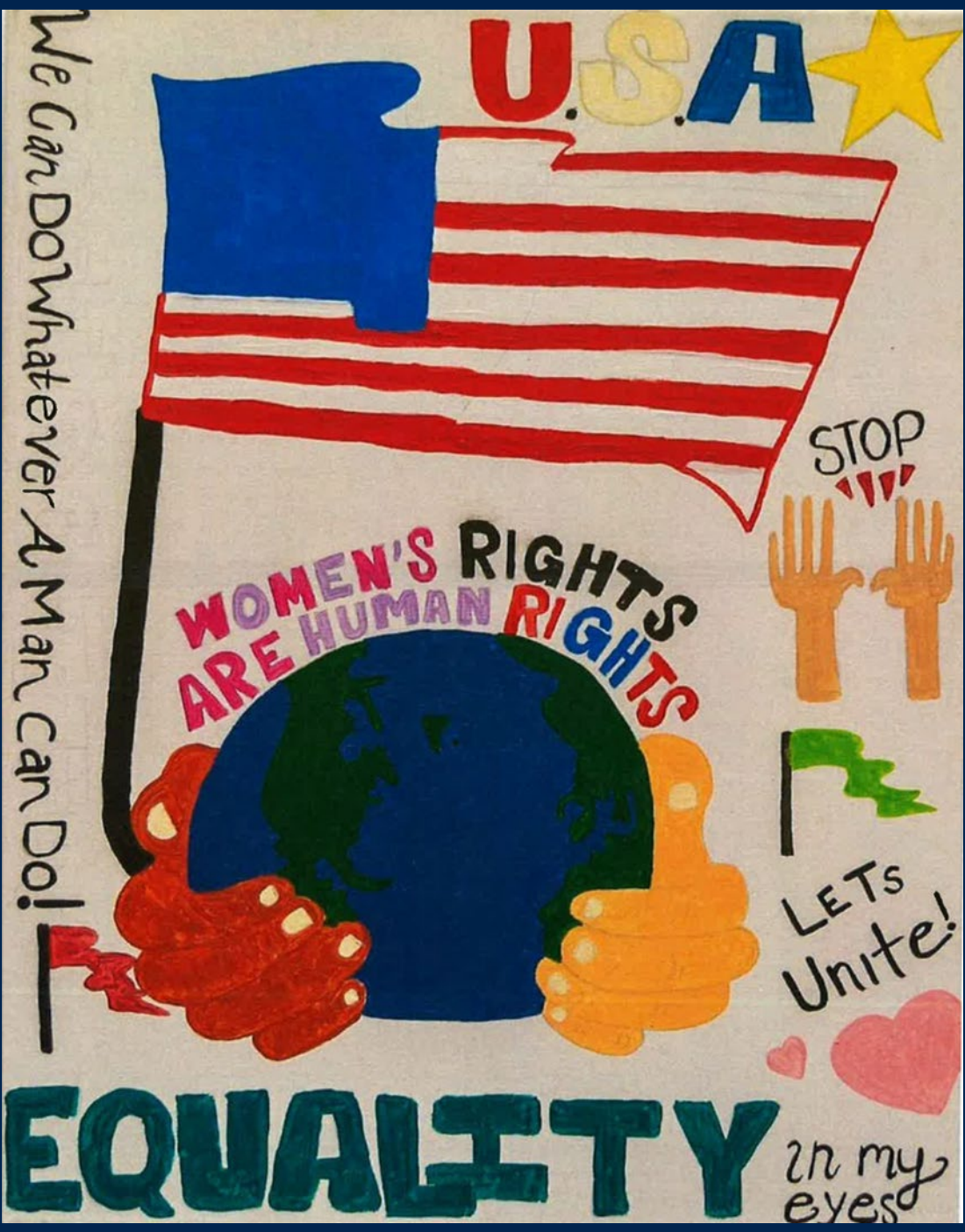


Maryland

JUVENILE SERVICES
EDUCATION PROGRAM

February 2025

Sunday	Monday	Tuesday	Wednesday	Thursday	Friday	Saturday
						1
2	3	4	5	6	7	8
	School- Based PD School Counselor and School Social Worker Week School closed to students	Systemwide PD Semester 1 credit due School closed to students	3rd Quarter Begins		2nd Quarter Report Cards & Transcripts Mailed	
9	10	11	12	13	14	15
	Monthly Report & Indicator 13 Due				Quarter 2 Compliance Monitoring Due	
16	17	18	19	20	21	22
	PRESIDENT'S DAY State Holiday	ACCESS for ELLs Ends	ACCESS for ELLs Makeup Window Begins			
23	24	25	26	27	28	



We Can Do Whatever A Man Can Do!

U.S.A. ★

WOMEN'S RIGHTS
ARE HUMAN RIGHTS

STOP



LET'S
Unite!



EQUALITY

in my
eyes

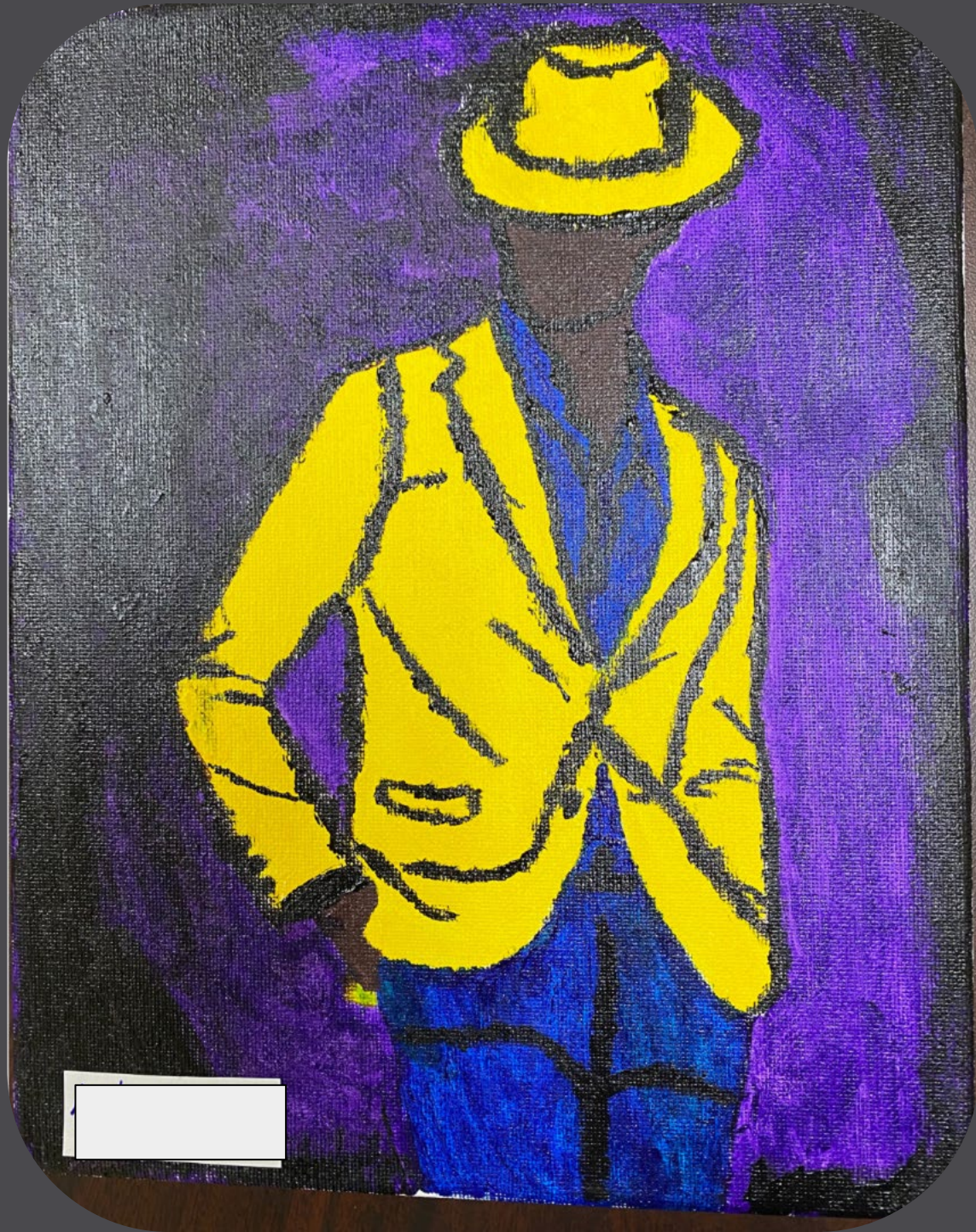


Maryland

JUVENILE SERVICES
EDUCATION PROGRAM

March 2025

Sunday	Monday	Tuesday	Wednesday	Thursday	Friday	Saturday
						1
2	3	4	5	6	7	8
	Science MISA 5 & 8 Begins	ACCESS for ELLs Makeup Window Ends			Monthly Report & Indicators 13 Due	
9	10	11	12	13	14	15
					Quarter 3 Progress Report Grades Due	
16	17	18	19	20	21	22
		3rd Quarter Progress Reports Mailed			Science MISA 5 & 8 Ends	
23	24	25	26	27	28	29
					No New Academic Enrollments	
30	31					





Maryland

JUVENILE SERVICES
EDUCATION PROGRAM

April 2025

Sunday	Monday	Tuesday	Wednesday	Thursday	Friday	Saturday
		1	2	3	4	5
					No New Academic Withdrawals School Librarian Day	
6	7	8	9	10	11	12
	MCAP Math & ELA Spring Testing Begins	Monthly report & indicator 13 Due		Quarter 3 Ends (46 days)	Systemwide PD Quarter 3 Report Card Grades Stored @ Noon School closed to students	
13	14	15	16	17	18	19
	School- Based PD School closed to students	Quarter 4 Begins Quarter 3 Report Cards Mailed			School-Based PD School closed to students	
20	21	22	23	24	25	26
			Administrative Professional Day			
27	28	29	30			
	MCAP Government & LS MISA Spring Testing Begins	3rd Quarter Compliance Monitoring Due				





Maryland

JUVENILE SERVICES
EDUCATION PROGRAM

May 2025

Sunday	Monday	Tuesday	Wednesday	Thursday	Friday	Saturday
				1	2	3
				School Principal Day		
4	5	6	7	8	9	10
	Teacher Appreciation Week MCAP Social Studies 8 & Spring Testing Begins		Monthly report & Indicators 13 due			
11	12	13	14	15	16	17
				4th Quarter Progress Report Grades Due		
18	19	20	21	22	23	24
	4th Quarter Progress Reports Mailed				School-Based PD School closed to students	
25	26	27	28	29	30	31
	MEMORIAL DAY State Holiday			No New Academic Enrollments	MCAP Spring Testing Ends	





Maryland

JUVENILE SERVICES
EDUCATION PROGRAM

June 2025

Sunday	Monday	Tuesday	Wednesday	Thursday	Friday	Saturday
1	2	3	4	5	6	7
					Monthly report & Indicator 13 due	
8	9	10	11	12	13	14
			No New Academic Withdrawals			
15	16	17	18	19	20	21
			Quarter 4 Ends (44 days) ½ day for Students	JUNETEENTH State Holiday	School-Based PD Quarter 4 Report Card Grades Stored @ 4pm School closed to Students	
22	23	24	25	26	27	28
	School-Based PD School closed to Students	School-Based PD School closed to Students	Systemwide PD School closed to Students	School-Based PD School closed to Students	School-Based PD School closed to Students	
29	30					
	Summer School Begins 4th Quarter Compliance Monitoring Due					



It's BEEN
written N the ★

Jelana 7/10/18



Maryland

JUVENILE SERVICES
EDUCATION PROGRAM

July 2025

Sunday	Monday	Tuesday	Wednesday	Thursday	Friday	Saturday
		1	2	3	4	5
				½ day for Students	INDEPENDENCE DAY State Holiday	
6	7	8	9	10	11	12
	Semester 2 Credits Due Monthly report & Indicator 13 Due			Quarter 4 Report Cards & Transcripts Mailed		
13	14	15	16	17	18	19
20	21	22	23	24	25	26
	MCAP Summer Testing Begins			No New Academic Enrollments		
27	28	29	30	31		



Maryland

JUVENILE SERVICES
EDUCATION PROGRAM

August 2025

Sunday	Monday	Tuesday	Wednesday	Thursday	Friday	Saturday
					1	2
					MCAP Summer Testing Ends	
3	4	5	6	7	8	9
10	11	12	13	14	15	16
17	18	19	20	21	22	23
		No New Academic Withdrawals				
24	25	26	27	28	29	30
	Last Day of Summer school (40 days)	School-Based PD Summer School Report Grades Stored @ 4pm School closed to students	School- Based PD School closed to students	Systemwide PD School closed to students	School- Based PD School closed to students	

24/25 School Calendar

	PD Days	Instructional Days	Teacher Days
1 st Quarter	4	45	49
2 nd Quarter	7	47	54
3 rd Quarter	2	46	48
4 th Quarter	8	44	52
Summer	4	40	44
Totals	23	222	247